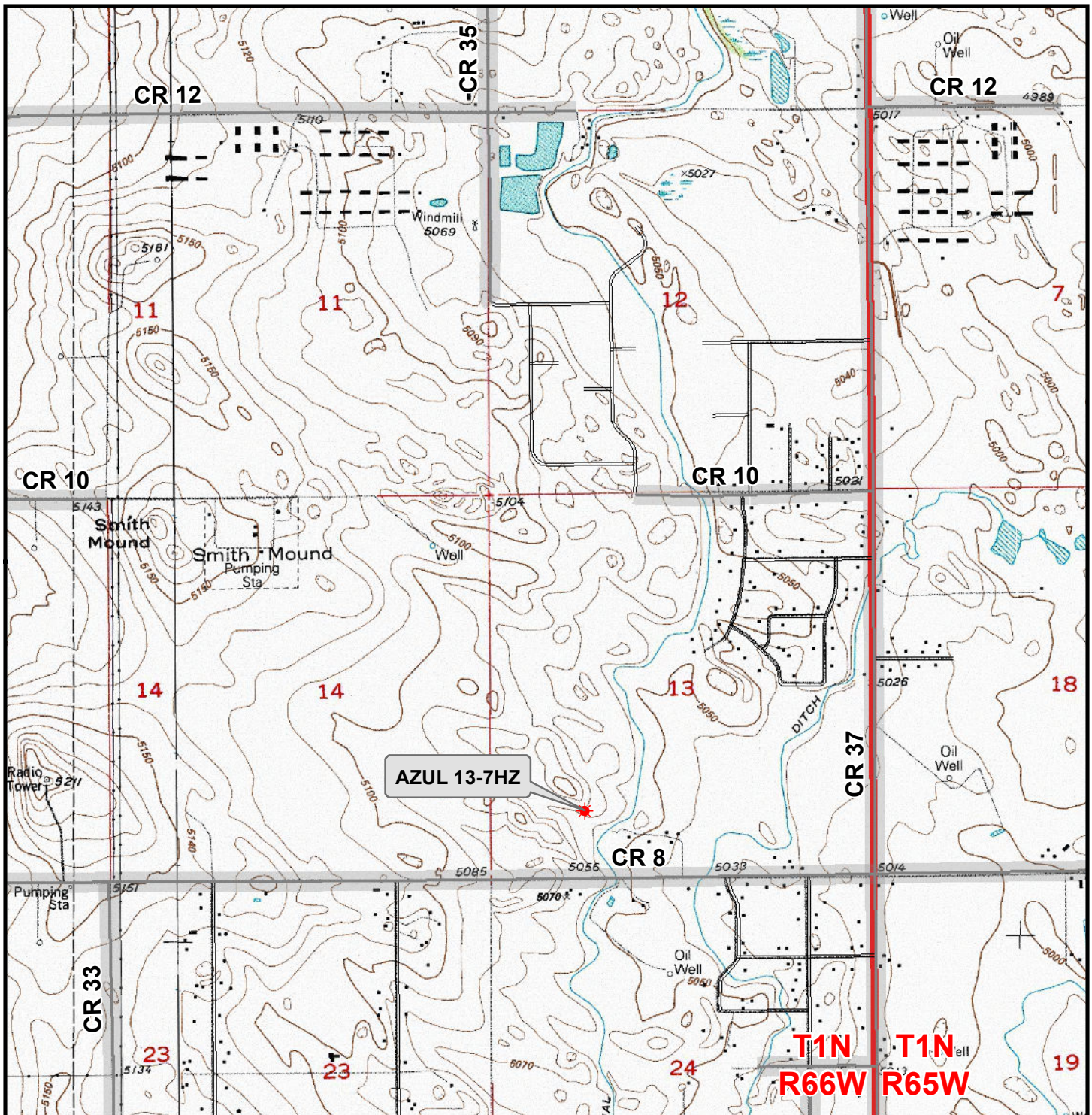


\\ANADARKO\2016_194_AZUL_T1N_R66W_SEC_13\PLATS\13-6HZ\AZUL_13-6HZ_PLATS.dwg, 6/21/2017 1:49:06 PM, Lisa

K:\ANADARKO\2016\2016_194_AZUL_T1N_R66W_SEC_13\GIS\Maps_ABC\Azul 13-6HZ\Azul 13-7HZ.mxd 6/23/2017 10:17:03 AM



Legend

- ★ Well - Fee - Proposed === Road - Primitive - Existing — Road - County - Existing
— Road - Improved - Existing — Road - Highway - Existing

WELL PAD - AZUL 13-6HZ
GENERAL LOCATION MAP
AZUL 13-7HZ
LOCATED IN SECTION 13
T1N, R66W, 6th P.M.
WELD COUNTY, COLORADO

**Kerr-McGee Oil &
Gas Onshore L.P.**

1099 18th Street
Denver, Colorado 80202



CONSULTING, LLC

SHERIDAN OFFICE
1095 Saberton Avenue
Sheridan, Wyoming 82801
Phone 307-674-0609

LOVELAND OFFICE
1635 Foxtail Drive, Suite 204
Loveland, Colorado 80538
Phone 970-776-4331



SCALE: 1" = 2,000ft

NAD83 CO-Nft

DRAWN: SP

DATE: 23 Jun 2017

REVISED:

DATE: