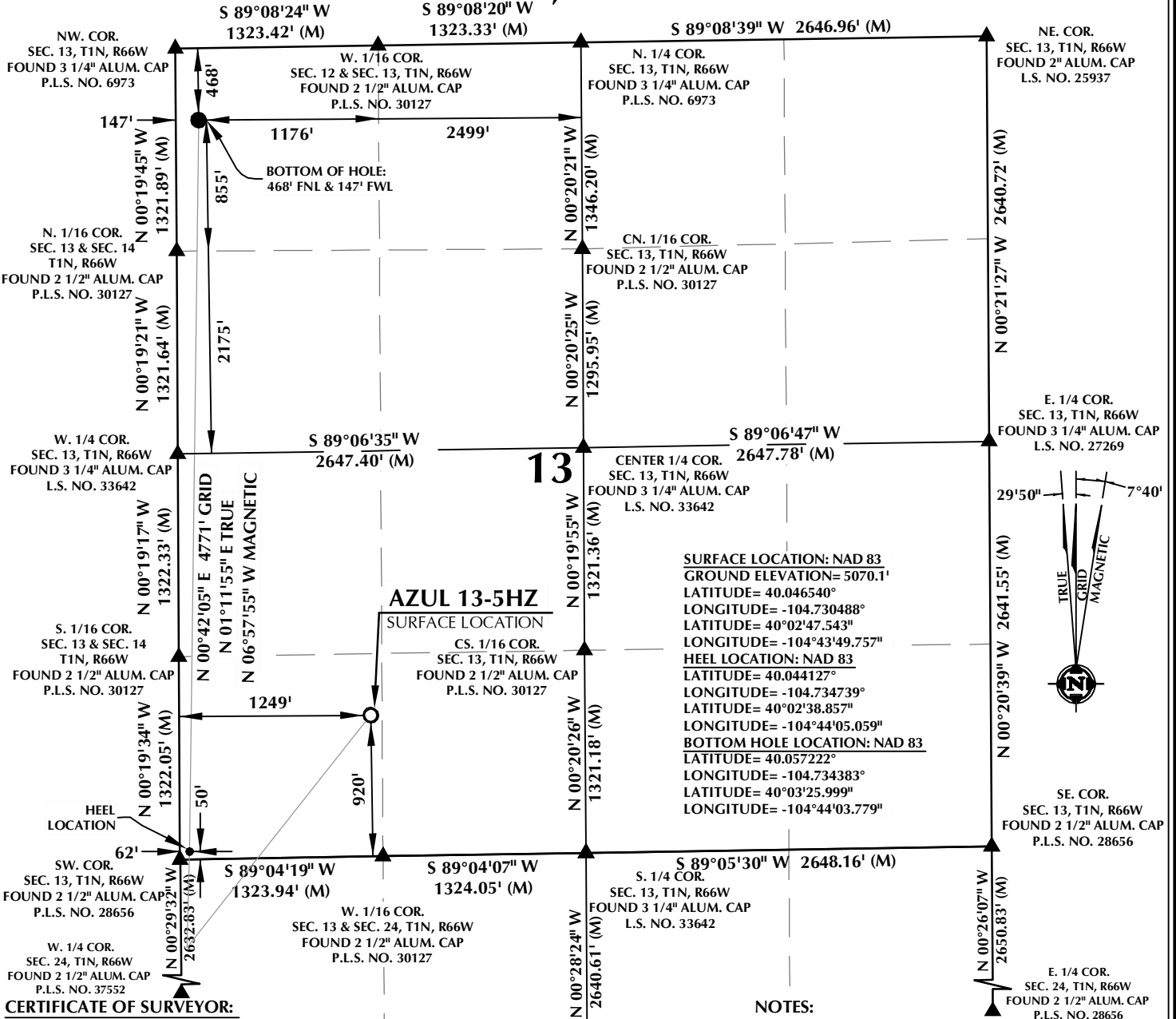


T1N, R66W



CERTIFICATE OF SURVEYOR:

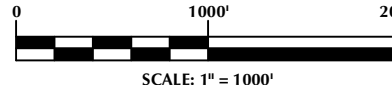
THIS IS TO CERTIFY THAT THE ABOVE PLAT WAS PREPARED FROM FIELD NOTES OF ACTUAL SURVEYS MADE BY ME OR UNDER MY SUPERVISION AND THAT THE SAME ARE TRUE AND CORRECT TO THE BEST OF MY KNOWLEDGE AND BELIEF. THIS CERTIFICATE DOES NOT REPRESENT A LAND SURVEY PLAT OR IMPROVEMENT SURVEY PLAT AS DEFINED BY C.R.S. 38-5-102 AND CANNOT BE RELIED UPON TO DETERMINE OWNERSHIP.

Randall K. French
 RANDALL K. FRENCH
 PROFESSIONAL LAND SURVEYOR
 COLORADO REGISTRATION NUMBER 38512
 6/23/17

NOTICE:
 ACCORDING TO COLORADO STATE LAW YOU MUST READ THIS NOTICE OF LEGAL ACTION BASED UPON ANY DEFECT IN THIS SURVEY WITHIN THREE YEARS AFTER YOU FIRST DISCOVER SUCH DEFECT. IN NO EVENT MAY ANY ACTION BASED UPON ANY DEFECT IN THIS SURVEY BE COMMENCED MORE THAN TEN YEARS FROM THE DATE ON THE CERTIFICATION SHOWN HEREON.

CENTER 1/4 COR.
 SEC. 24, T1N, R66W
 FOUND 2 1/2" ALUM. CAP
 P.L.S. NO. 28656

NOTE:
 MAGNETIC NORTH IS CURRENT AS OF 5/11/2017.
 MAGNETIC NORTH CHANGES WEST 0°06' PER YEAR.



SURFACE LOCATION: NAD 83
 GROUND ELEVATION=5070.1'
 LATITUDE= 40.046540°
 LONGITUDE= -104.730488°
 LATITUDE= 40°02'47.543"
 LONGITUDE= -104°43'49.757"
HEEL LOCATION: NAD 83
 LATITUDE= 40.044127°
 LONGITUDE= -104.734739°
 LATITUDE= 40°02'38.857"
 LONGITUDE= -104°44'05.059"
BOTTOM HOLE LOCATION: NAD 83
 LATITUDE= 40.057222°
 LONGITUDE= -104.734383°
 LATITUDE= 40°03'25.999"
 LONGITUDE= -104°44'03.779"

NOTES:

- ▲ INDICATES SECTION CORNER
- INDICATES CALCULATED CORNER
- ELEVATION BASED ON NAVD88 (GEOID12B)
- BASIS OF BEARING DERIVED FROM COLORADO COORDINATE SYSTEM OF 1983 NORTH ZONE.
- ALL MEASURED DISTANCES ARE GRID.
- COMBINED SCALE FACTOR: .99972250 CALCULATED FROM THE W. 1/4 CORNER OF SECTION 13, T1N, R66W
- OPERATOR: PRESTON KNUSTEN / PDOP = 1.5
- SEE ADDENDUM TO WELL LOCATION CERTIFICATE FOR EXISTING IMPROVEMENTS WITHIN 500' OF THE WELL PAD.
- WELL FOOTAGES ARE MEASURED AT RIGHT ANGLES TO THE SECTION LINES.
- THE BOTTOM OF HOLE BEARS N00°42'05"E, 4771' FROM THE HEEL LOCATION.

Kerr-McGee Oil & Gas Onshore L.P.

1099 18th Street
 Denver, Colorado 80202

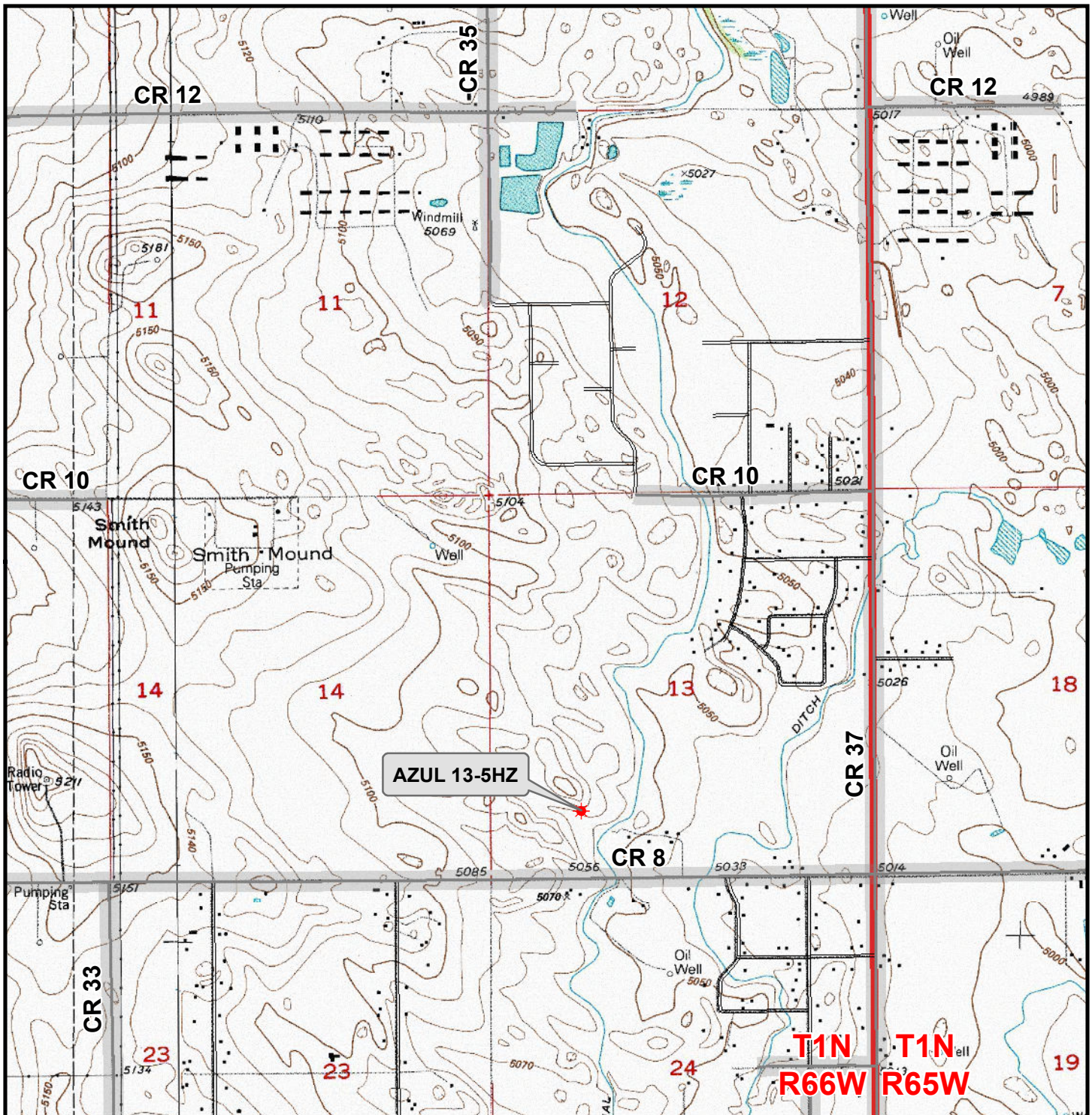


CONSULTING, LLC

SHERIDAN OFFICE
 1095 Saberton Avenue
 Sheridan, Wyoming 82801
 Phone 307-674-0609

LOVELAND OFFICE
 1635 Foxtrail Drive, Suite 204
 Loveland, Colorado 80538
 Phone 970-776-4331

DRAFTED BY:	LMO	CHECKED BY:	RKF
DATE DRAFTED:	6/23/17	DATE SURVEYED:	5/11/17
REVISED:		FILE NAME:	16-194



Legend

- ★ Well - Fee - Proposed
 Road - Primitive - Existing
 Road - County - Existing
 Road - Improved - Existing
 Road - Highway - Existing

WELL PAD - AZUL 13-6HZ
GENERAL LOCATION MAP
AZUL 13-5HZ
LOCATED IN SECTION 13
T1N, R66W, 6th P.M.
WELD COUNTY, COLORADO

**Kerr-McGee Oil &
Gas Onshore L.P.**

1099 18th Street
 Denver, Colorado 80202



CONSULTING, LLC

SHERIDAN OFFICE
 1095 Saberton Avenue
 Sheridan, Wyoming 82801
 Phone 307-674-0609

LOVELAND OFFICE
 1635 Foxtail Drive, Suite 204
 Loveland, Colorado 80538
 Phone 970-776-4331



SCALE: 1" = 2,000ft

NAD83 CO-Nft

DRAWN: SP

DATE: 23 Jun 2017

REVISED:

DATE: