

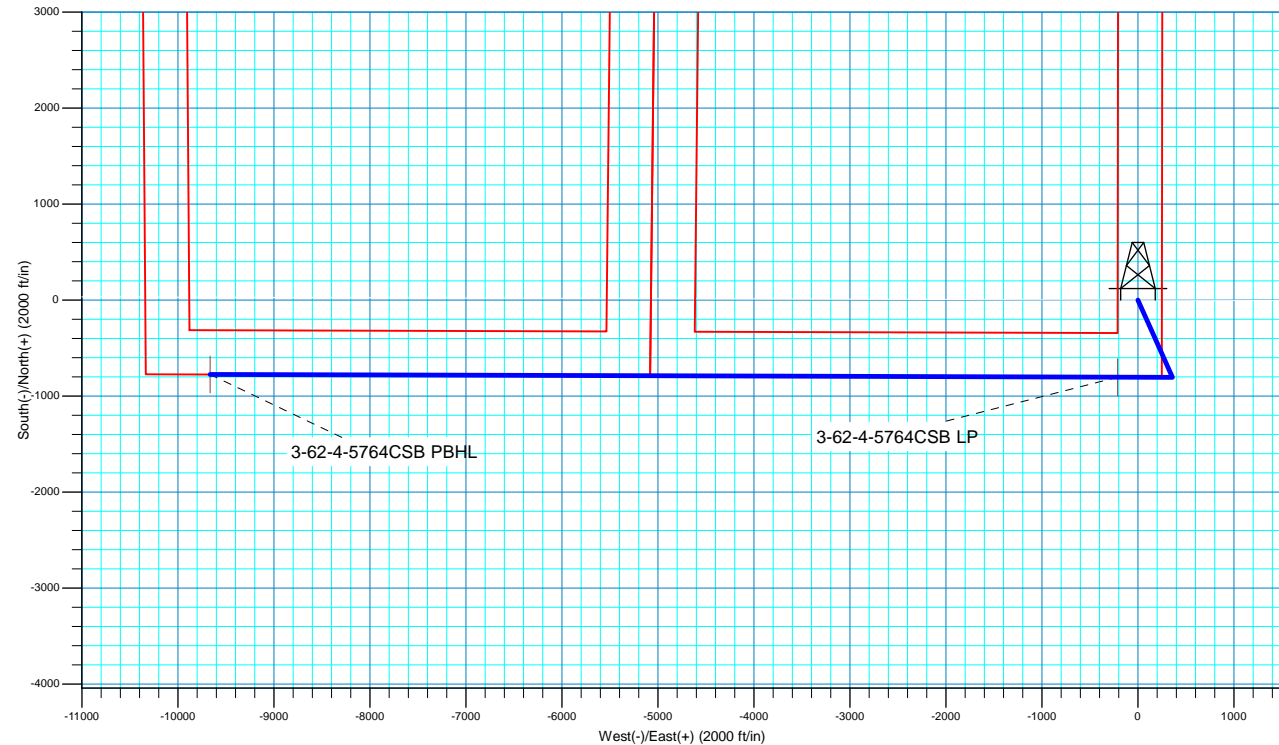
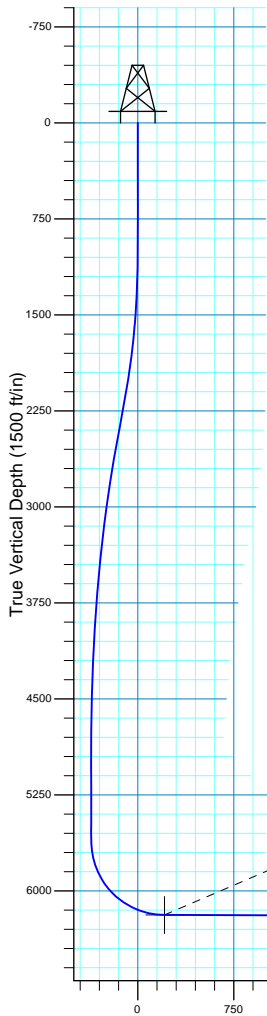


### SECTION DETAILS

MD	Inc	Azi	TVD	+N/-S	+E/-W	Dleg	TFace	VSect
0.00	0.00	0.000	0.00	0.00	0.00	0.00	0.00	0.00
1000.00	0.00	0.000	1000.00	0.00	0.00	0.00	0.00	0.00
2212.06	24.24	155.886	2176.22	-230.56	103.20	2.00	155.89	-103.90
2512.44	24.24	155.886	2450.11	-343.12	153.59	0.00	0.00	-154.62
4936.55	0.00	0.000	4802.55	-804.24	359.99	1.00	180.00	-362.42
5748.05	0.00	0.000	5614.05	-804.24	359.99	0.00	0.00	-362.42
6646.11	89.81	270.173	6187.00	-802.52	-211.03	10.00	270.17	208.60
16099.43	89.81	270.173	6219.00	-774.03	-9664.25	0.00	0.00	9661.87

### WELL DETAILS: Anschutz Equus Farm 3-62-4-5764CSB

+N/-S	+E/-W	GL 4591.4' & KB 20' @ 4611.40ft	4591.40	Longitude
Northing	Easting	Latitude		
0.00	0.00	1336083.93	3329294.09	40° 14' 59.769 N 104° 19' 12.850 W



3-62-4-5764CSB LP

3-62-4-5764CSB PBHL

Vertical Section at 270.173° (1500 ft/in)



**Bill Barrett Corporation**

## **Bill Barrett Corp.**

**Weld County, CO NAD 83**

**Anschutz Equus Farms 3-62-4\_5 SESE Pad**

**Anschutz Equus Farm 3-62-4-5764CSB**

**OH**

**Plan: Plan 1**

## **Standard Planning Report**

**06 September, 2017**



**Scientific Drilling**

[www.scientificdrilling.com](http://www.scientificdrilling.com)



<b>Database:</b>	Casper District	<b>Local Co-ordinate Reference:</b>	Well Anschutz Equus Farm 3-62-4-5764CSB
<b>Company:</b>	Bill Barrett Corp.	<b>TVD Reference:</b>	GL 4591.4' & KB 20' @ 4611.40ft
<b>Project:</b>	Weld County, CO NAD 83	<b>MD Reference:</b>	GL 4591.4' & KB 20' @ 4611.40ft
<b>Site:</b>	Anschutz Equus Farms 3-62-4_5 SESE Pad	<b>North Reference:</b>	True
<b>Well:</b>	Anschutz Equus Farm 3-62-4-5764CSB	<b>Survey Calculation Method:</b>	Minimum Curvature
<b>Wellbore:</b>	OH		
<b>Design:</b>	Plan 1		

<b>Project</b>	Weld County, CO NAD 83		
<b>Map System:</b>	US State Plane 1983	<b>System Datum:</b>	Mean Sea Level
<b>Geo Datum:</b>	North American Datum 1983		
<b>Map Zone:</b>	Colorado Northern Zone		

<b>Site</b>	Anschutz Equus Farms 3-62-4_5 SESE Pad, Site Center : Anschutz Equus Farm 3-62-4-4148C			
<b>Site Position:</b>		<b>Northing:</b>	1,336,129.47 usft	<b>Latitude:</b> 40° 15' 0.220 N
<b>From:</b>	Lat/Long	<b>Easting:</b>	3,329,293.49 usft	<b>Longitude:</b> 104° 19' 12.850 W
<b>Position Uncertainty:</b>	0.00 ft	<b>Slot Radius:</b>	13.200 in	<b>Grid Convergence:</b> 0.76 °

<b>Well</b>	Anschutz Equus Farm 3-62-4-5764CSB, 805' FSL 250' FEL Sec 4 T3N R62W			
<b>Well Position</b>	<b>+N/-S</b>	-45.55 ft	<b>Northing:</b>	1,336,083.93 usft
	<b>+E/-W</b>	0.00 ft	<b>Easting:</b>	3,329,294.09 usft
<b>Position Uncertainty</b>		0.00 ft	<b>Wellhead Elevation:</b>	0.00 ft
			<b>Ground Level:</b>	4,591.40 ft

<b>Wellbore</b>	OH				
<b>Magnetics</b>	<b>Model Name</b>	<b>Sample Date</b>	<b>Declination (°)</b>	<b>Dip Angle (°)</b>	<b>Field Strength (nT)</b>
	HDGM	9/6/2017	8.27	66.92	52,359

<b>Design</b>	Plan 1			
<b>Audit Notes:</b>				
<b>Version:</b>	<b>Phase:</b>	PLAN	<b>Tie On Depth:</b>	0.00
<b>Vertical Section:</b>	<b>Depth From (TVD) (ft)</b>	<b>+N/-S (ft)</b>	<b>+E/-W (ft)</b>	<b>Direction (°)</b>
	0.00	0.00	0.00	270.173

<b>Plan Sections</b>										
Measured Depth (ft)	Inclination (°)	Azimuth (°)	Vertical Depth (ft)	+N/-S (ft)	+E/-W (ft)	Dogleg Rate (°/100ft)	Build Rate (°/100ft)	Turn Rate (°/100ft)	TFO (°)	Target
0.00	0.00	0.000	0.00	0.00	0.00	0.00	0.00	0.00	0.00	
1,000.00	0.00	0.000	1,000.00	0.00	0.00	0.00	0.00	0.00	0.00	
2,212.06	24.24	155.886	2,176.22	-230.56	103.20	2.00	2.00	0.00	155.89	
2,512.44	24.24	155.886	2,450.11	-343.12	153.59	0.00	0.00	0.00	0.00	
4,936.55	0.00	0.000	4,802.55	-804.24	359.99	1.00	-1.00	0.00	180.00	
5,748.05	0.00	0.000	5,614.05	-804.24	359.99	0.00	0.00	0.00	0.00	
6,646.11	89.81	270.173	6,187.00	-802.52	-211.03	10.00	10.00	-10.00	270.17	
16,099.43	89.81	270.173	6,219.00	-774.03	-9,664.25	0.00	0.00	0.00	0.00	3-62-4-5764CSB PBI

<b>Database:</b>	Casper District	<b>Local Co-ordinate Reference:</b>	Well Anschutz Equus Farm 3-62-4-5764CSB
<b>Company:</b>	Bill Barrett Corp.	<b>TVD Reference:</b>	GL 4591.4' & KB 20' @ 4611.40ft
<b>Project:</b>	Weld County, CO NAD 83	<b>MD Reference:</b>	GL 4591.4' & KB 20' @ 4611.40ft
<b>Site:</b>	Anschutz Equus Farms 3-62-4_5 SESE Pad	<b>North Reference:</b>	True
<b>Well:</b>	Anschutz Equus Farm 3-62-4-5764CSB	<b>Survey Calculation Method:</b>	Minimum Curvature
<b>Wellbore:</b>	OH		
<b>Design:</b>	Plan 1		

Planned Survey									
Measured Depth (ft)	Inclination (°)	Azimuth (°)	Vertical Depth (ft)	+N/-S (ft)	+E/-W (ft)	Vertical Section (ft)	Dogleg Rate (°/100ft)	Build Rate (°/100ft)	Turn Rate (°/100ft)
0.00	0.00	0.000	0.00	0.00	0.00	0.00	0.00	0.00	0.00
100.00	0.00	0.000	100.00	0.00	0.00	0.00	0.00	0.00	0.00
200.00	0.00	0.000	200.00	0.00	0.00	0.00	0.00	0.00	0.00
300.00	0.00	0.000	300.00	0.00	0.00	0.00	0.00	0.00	0.00
400.00	0.00	0.000	400.00	0.00	0.00	0.00	0.00	0.00	0.00
500.00	0.00	0.000	500.00	0.00	0.00	0.00	0.00	0.00	0.00
600.00	0.00	0.000	600.00	0.00	0.00	0.00	0.00	0.00	0.00
700.00	0.00	0.000	700.00	0.00	0.00	0.00	0.00	0.00	0.00
800.00	0.00	0.000	800.00	0.00	0.00	0.00	0.00	0.00	0.00
900.00	0.00	0.000	900.00	0.00	0.00	0.00	0.00	0.00	0.00
1,000.00	0.00	0.000	1,000.00	0.00	0.00	0.00	0.00	0.00	0.00
<b>Start Build 2.00</b>									
1,100.00	2.00	155.886	1,099.98	-1.59	0.71	-0.72	2.00	2.00	0.00
1,200.00	4.00	155.886	1,199.84	-6.37	2.85	-2.87	2.00	2.00	0.00
1,300.00	6.00	155.886	1,299.45	-14.32	6.41	-6.45	2.00	2.00	0.00
1,400.00	8.00	155.886	1,398.70	-25.45	11.39	-11.47	2.00	2.00	0.00
1,500.00	10.00	155.886	1,497.47	-39.72	17.78	-17.90	2.00	2.00	0.00
1,600.00	12.00	155.886	1,595.62	-57.14	25.58	-25.75	2.00	2.00	0.00
1,700.00	14.00	155.886	1,693.06	-77.67	34.77	-35.00	2.00	2.00	0.00
1,800.00	16.00	155.886	1,789.64	-101.29	45.34	-45.65	2.00	2.00	0.00
1,900.00	18.00	155.886	1,885.27	-127.98	57.28	-57.67	2.00	2.00	0.00
2,000.00	20.00	155.886	1,979.82	-157.69	70.58	-71.06	2.00	2.00	0.00
2,100.00	22.00	155.886	2,073.17	-190.40	85.23	-85.80	2.00	2.00	0.00
2,200.00	24.00	155.886	2,165.21	-226.06	101.19	-101.87	2.00	2.00	0.00
2,212.06	24.24	155.886	2,176.22	-230.56	103.20	-103.90	2.00	2.00	0.00
<b>Start 300.38 hold at 2212.06 MD</b>									
2,300.00	24.24	155.886	2,256.41	-263.51	117.95	-118.75	0.00	0.00	0.00
2,400.00	24.24	155.886	2,347.59	-300.99	134.73	-135.64	0.00	0.00	0.00
2,500.00	24.24	155.886	2,438.77	-338.46	151.50	-152.52	0.00	0.00	0.00
2,512.44	24.24	155.886	2,450.11	-343.12	153.59	-154.62	0.00	0.00	0.00
<b>Start Drop -1.00</b>									
2,600.00	23.37	155.886	2,530.23	-375.38	168.03	-169.16	1.00	-1.00	0.00
2,700.00	22.37	155.886	2,622.37	-410.85	183.90	-185.14	1.00	-1.00	0.00
2,800.00	21.37	155.886	2,715.17	-444.84	199.12	-200.46	1.00	-1.00	0.00
2,900.00	20.37	155.886	2,808.61	-477.35	213.67	-215.11	1.00	-1.00	0.00
3,000.00	19.37	155.886	2,902.66	-508.36	227.55	-229.09	1.00	-1.00	0.00
3,100.00	18.37	155.886	2,997.29	-537.88	240.76	-242.38	1.00	-1.00	0.00
3,200.00	17.37	155.886	3,092.46	-565.88	253.30	-255.00	1.00	-1.00	0.00
3,300.00	16.37	155.886	3,188.16	-592.36	265.15	-266.94	1.00	-1.00	0.00
3,400.00	15.37	155.886	3,284.35	-617.31	276.32	-278.18	1.00	-1.00	0.00
3,500.00	14.37	155.886	3,381.00	-640.73	286.80	-288.73	1.00	-1.00	0.00
3,600.00	13.37	155.886	3,478.09	-662.60	296.59	-298.59	1.00	-1.00	0.00
3,700.00	12.37	155.886	3,575.58	-682.92	305.69	-307.75	1.00	-1.00	0.00
3,800.00	11.37	155.886	3,673.44	-701.69	314.09	-316.20	1.00	-1.00	0.00
3,900.00	10.37	155.886	3,771.64	-718.89	321.79	-323.96	1.00	-1.00	0.00
4,000.00	9.37	155.886	3,870.16	-734.53	328.79	-331.00	1.00	-1.00	0.00
4,100.00	8.37	155.886	3,968.97	-748.60	335.08	-337.34	1.00	-1.00	0.00
4,200.00	7.37	155.886	4,068.03	-761.09	340.67	-342.97	1.00	-1.00	0.00
4,300.00	6.37	155.886	4,167.31	-772.00	345.56	-347.89	1.00	-1.00	0.00
4,400.00	5.37	155.886	4,266.78	-781.33	349.73	-352.09	1.00	-1.00	0.00
4,500.00	4.37	155.886	4,366.42	-789.07	353.20	-355.58	1.00	-1.00	0.00
4,600.00	3.37	155.886	4,466.19	-795.22	355.95	-358.35	1.00	-1.00	0.00
4,700.00	2.37	155.886	4,566.07	-799.78	358.00	-360.41	1.00	-1.00	0.00

<b>Database:</b>	Casper District	<b>Local Co-ordinate Reference:</b>	Well Anschutz Equus Farm 3-62-4-5764CSB
<b>Company:</b>	Bill Barrett Corp.	<b>TVD Reference:</b>	GL 4591.4' & KB 20' @ 4611.40ft
<b>Project:</b>	Weld County, CO NAD 83	<b>MD Reference:</b>	GL 4591.4' & KB 20' @ 4611.40ft
<b>Site:</b>	Anschutz Equus Farms 3-62-4_5 SESE Pad	<b>North Reference:</b>	True
<b>Well:</b>	Anschutz Equus Farm 3-62-4-5764CSB	<b>Survey Calculation Method:</b>	Minimum Curvature
<b>Wellbore:</b>	OH		
<b>Design:</b>	Plan 1		

Planned Survey									
Measured Depth (ft)	Inclination (°)	Azimuth (°)	Vertical Depth (ft)	+N/-S (ft)	+E/-W (ft)	Vertical Section (ft)	Dogleg Rate (°/100ft)	Build Rate (°/100ft)	Turn Rate (°/100ft)
4,800.00	1.37	155.886	4,666.01	-802.75	359.33	-361.75	1.00	-1.00	0.00
4,900.00	0.37	155.886	4,766.00	-804.13	359.94	-362.37	1.00	-1.00	0.00
4,936.55	0.00	0.000	4,802.55	-804.24	359.99	-362.42	1.00	-1.00	0.00
<b>Start 811.50 hold at 4936.55 MD</b>									
5,000.00	0.00	0.000	4,866.00	-804.24	359.99	-362.42	0.00	0.00	0.00
5,100.00	0.00	0.000	4,966.00	-804.24	359.99	-362.42	0.00	0.00	0.00
5,200.00	0.00	0.000	5,066.00	-804.24	359.99	-362.42	0.00	0.00	0.00
5,300.00	0.00	0.000	5,166.00	-804.24	359.99	-362.42	0.00	0.00	0.00
5,400.00	0.00	0.000	5,266.00	-804.24	359.99	-362.42	0.00	0.00	0.00
5,500.00	0.00	0.000	5,366.00	-804.24	359.99	-362.42	0.00	0.00	0.00
5,600.00	0.00	0.000	5,466.00	-804.24	359.99	-362.42	0.00	0.00	0.00
5,700.00	0.00	0.000	5,566.00	-804.24	359.99	-362.42	0.00	0.00	0.00
5,748.05	0.00	0.000	5,614.05	-804.24	359.99	-362.42	0.00	0.00	0.00
<b>Start DLS 10.00 TFO 270.17</b>									
5,800.00	5.19	270.173	5,665.93	-804.23	357.64	-360.06	10.00	10.00	0.00
5,900.00	15.19	270.173	5,764.23	-804.18	339.96	-342.39	10.00	10.00	0.00
6,000.00	25.19	270.173	5,857.96	-804.08	305.48	-307.91	10.00	10.00	0.00
6,100.00	35.19	270.173	5,944.28	-803.92	255.25	-257.68	10.00	10.00	0.00
6,200.00	45.19	270.173	6,020.57	-803.73	190.79	-193.22	10.00	10.00	0.00
6,300.00	55.19	270.173	6,084.51	-803.50	114.07	-116.49	10.00	10.00	0.00
6,400.00	65.19	270.173	6,134.15	-803.24	27.41	-29.83	10.00	10.00	0.00
6,500.00	75.19	270.173	6,167.99	-802.95	-66.56	64.13	10.00	10.00	0.00
6,600.00	85.19	270.173	6,184.99	-802.66	-164.97	162.55	10.00	10.00	0.00
6,646.11	89.81	270.173	6,187.00	-802.52	-211.03	208.60	10.00	10.00	0.00
<b>Start 9453.32 hold at 6646.11 MD</b>									
6,700.00	89.81	270.173	6,187.19	-802.36	-264.91	262.49	0.00	0.00	0.00
6,800.00	89.81	270.173	6,187.53	-802.06	-364.91	362.49	0.00	0.00	0.00
6,900.00	89.81	270.173	6,187.86	-801.75	-464.91	462.49	0.00	0.00	0.00
7,000.00	89.81	270.173	6,188.20	-801.45	-564.91	562.49	0.00	0.00	0.00
7,100.00	89.81	270.173	6,188.54	-801.15	-664.91	662.49	0.00	0.00	0.00
7,200.00	89.81	270.173	6,188.88	-800.85	-764.91	762.49	0.00	0.00	0.00
7,300.00	89.81	270.173	6,189.22	-800.55	-864.91	862.49	0.00	0.00	0.00
7,400.00	89.81	270.173	6,189.56	-800.25	-964.91	962.49	0.00	0.00	0.00
7,500.00	89.81	270.173	6,189.89	-799.95	-1,064.91	1,062.49	0.00	0.00	0.00
7,600.00	89.81	270.173	6,190.23	-799.64	-1,164.91	1,162.49	0.00	0.00	0.00
7,700.00	89.81	270.173	6,190.57	-799.34	-1,264.90	1,262.48	0.00	0.00	0.00
7,800.00	89.81	270.173	6,190.91	-799.04	-1,364.90	1,362.48	0.00	0.00	0.00
7,900.00	89.81	270.173	6,191.25	-798.74	-1,464.90	1,462.48	0.00	0.00	0.00
8,000.00	89.81	270.173	6,191.59	-798.44	-1,564.90	1,562.48	0.00	0.00	0.00
8,100.00	89.81	270.173	6,191.93	-798.14	-1,664.90	1,662.48	0.00	0.00	0.00
8,200.00	89.81	270.173	6,192.26	-797.84	-1,764.90	1,762.48	0.00	0.00	0.00
8,300.00	89.81	270.173	6,192.60	-797.54	-1,864.90	1,862.48	0.00	0.00	0.00
8,400.00	89.81	270.173	6,192.94	-797.23	-1,964.90	1,962.48	0.00	0.00	0.00
8,500.00	89.81	270.173	6,193.28	-796.93	-2,064.90	2,062.48	0.00	0.00	0.00
8,600.00	89.81	270.173	6,193.62	-796.63	-2,164.90	2,162.48	0.00	0.00	0.00
8,700.00	89.81	270.173	6,193.96	-796.33	-2,264.89	2,262.48	0.00	0.00	0.00
8,800.00	89.81	270.173	6,194.29	-796.03	-2,364.89	2,362.48	0.00	0.00	0.00
8,900.00	89.81	270.173	6,194.63	-795.73	-2,464.89	2,462.48	0.00	0.00	0.00
9,000.00	89.81	270.173	6,194.97	-795.43	-2,564.89	2,562.48	0.00	0.00	0.00
9,100.00	89.81	270.173	6,195.31	-795.12	-2,664.89	2,662.48	0.00	0.00	0.00
9,200.00	89.81	270.173	6,195.65	-794.82	-2,764.89	2,762.48	0.00	0.00	0.00
9,300.00	89.81	270.173	6,195.99	-794.52	-2,864.89	2,862.48	0.00	0.00	0.00
9,400.00	89.81	270.173	6,196.33	-794.22	-2,964.89	2,962.48	0.00	0.00	0.00

<b>Database:</b>	Casper District	<b>Local Co-ordinate Reference:</b>	Well Anschutz Equus Farm 3-62-4-5764CSB
<b>Company:</b>	Bill Barrett Corp.	<b>TVD Reference:</b>	GL 4591.4' & KB 20' @ 4611.40ft
<b>Project:</b>	Weld County, CO NAD 83	<b>MD Reference:</b>	GL 4591.4' & KB 20' @ 4611.40ft
<b>Site:</b>	Anschutz Equus Farms 3-62-4_5 SESE Pad	<b>North Reference:</b>	True
<b>Well:</b>	Anschutz Equus Farm 3-62-4-5764CSB	<b>Survey Calculation Method:</b>	Minimum Curvature
<b>Wellbore:</b>	OH		
<b>Design:</b>	Plan 1		

Planned Survey									
Measured Depth (ft)	Inclination (°)	Azimuth (°)	Vertical Depth (ft)	+N/-S (ft)	+E/-W (ft)	Vertical Section (ft)	Dogleg Rate (°/100ft)	Build Rate (°/100ft)	Turn Rate (°/100ft)
9,500.00	89.81	270.173	6,196.66	-793.92	-3,064.89	3,062.47	0.00	0.00	0.00
9,600.00	89.81	270.173	6,197.00	-793.62	-3,164.88	3,162.47	0.00	0.00	0.00
9,700.00	89.81	270.173	6,197.34	-793.32	-3,264.88	3,262.47	0.00	0.00	0.00
9,800.00	89.81	270.173	6,197.68	-793.02	-3,364.88	3,362.47	0.00	0.00	0.00
9,900.00	89.81	270.173	6,198.02	-792.71	-3,464.88	3,462.47	0.00	0.00	0.00
10,000.00	89.81	270.173	6,198.36	-792.41	-3,564.88	3,562.47	0.00	0.00	0.00
10,100.00	89.81	270.173	6,198.69	-792.11	-3,664.88	3,662.47	0.00	0.00	0.00
10,200.00	89.81	270.173	6,199.03	-791.81	-3,764.88	3,762.47	0.00	0.00	0.00
10,300.00	89.81	270.173	6,199.37	-791.51	-3,864.88	3,862.47	0.00	0.00	0.00
10,400.00	89.81	270.173	6,199.71	-791.21	-3,964.88	3,962.47	0.00	0.00	0.00
10,500.00	89.81	270.173	6,200.05	-790.91	-4,064.88	4,062.47	0.00	0.00	0.00
10,600.00	89.81	270.173	6,200.39	-790.60	-4,164.87	4,162.47	0.00	0.00	0.00
10,700.00	89.81	270.173	6,200.73	-790.30	-4,264.87	4,262.47	0.00	0.00	0.00
10,800.00	89.81	270.173	6,201.06	-790.00	-4,364.87	4,362.47	0.00	0.00	0.00
10,900.00	89.81	270.173	6,201.40	-789.70	-4,464.87	4,462.47	0.00	0.00	0.00
11,000.00	89.81	270.173	6,201.74	-789.40	-4,564.87	4,562.47	0.00	0.00	0.00
11,100.00	89.81	270.173	6,202.08	-789.10	-4,664.87	4,662.47	0.00	0.00	0.00
11,200.00	89.81	270.173	6,202.42	-788.80	-4,764.87	4,762.46	0.00	0.00	0.00
11,300.00	89.81	270.173	6,202.76	-788.49	-4,864.87	4,862.46	0.00	0.00	0.00
11,400.00	89.81	270.173	6,203.09	-788.19	-4,964.87	4,962.46	0.00	0.00	0.00
11,500.00	89.81	270.173	6,203.43	-787.89	-5,064.87	5,062.46	0.00	0.00	0.00
11,600.00	89.81	270.173	6,203.77	-787.59	-5,164.86	5,162.46	0.00	0.00	0.00
11,700.00	89.81	270.173	6,204.11	-787.29	-5,264.86	5,262.46	0.00	0.00	0.00
11,800.00	89.81	270.173	6,204.45	-786.99	-5,364.86	5,362.46	0.00	0.00	0.00
11,900.00	89.81	270.173	6,204.79	-786.69	-5,464.86	5,462.46	0.00	0.00	0.00
12,000.00	89.81	270.173	6,205.13	-786.39	-5,564.86	5,562.46	0.00	0.00	0.00
12,100.00	89.81	270.173	6,205.46	-786.08	-5,664.86	5,662.46	0.00	0.00	0.00
12,200.00	89.81	270.173	6,205.80	-785.78	-5,764.86	5,762.46	0.00	0.00	0.00
12,300.00	89.81	270.173	6,206.14	-785.48	-5,864.86	5,862.46	0.00	0.00	0.00
12,400.00	89.81	270.173	6,206.48	-785.18	-5,964.86	5,962.46	0.00	0.00	0.00
12,500.00	89.81	270.173	6,206.82	-784.88	-6,064.86	6,062.46	0.00	0.00	0.00
12,600.00	89.81	270.173	6,207.16	-784.58	-6,164.85	6,162.46	0.00	0.00	0.00
12,700.00	89.81	270.173	6,207.49	-784.28	-6,264.85	6,262.46	0.00	0.00	0.00
12,800.00	89.81	270.173	6,207.83	-783.97	-6,364.85	6,362.46	0.00	0.00	0.00
12,900.00	89.81	270.173	6,208.17	-783.67	-6,464.85	6,462.46	0.00	0.00	0.00
13,000.00	89.81	270.173	6,208.51	-783.37	-6,564.85	6,562.45	0.00	0.00	0.00
13,100.00	89.81	270.173	6,208.85	-783.07	-6,664.85	6,662.45	0.00	0.00	0.00
13,200.00	89.81	270.173	6,209.19	-782.77	-6,764.85	6,762.45	0.00	0.00	0.00
13,300.00	89.81	270.173	6,209.53	-782.47	-6,864.85	6,862.45	0.00	0.00	0.00
13,400.00	89.81	270.173	6,209.86	-782.17	-6,964.85	6,962.45	0.00	0.00	0.00
13,500.00	89.81	270.173	6,210.20	-781.87	-7,064.84	7,062.45	0.00	0.00	0.00
13,600.00	89.81	270.173	6,210.54	-781.56	-7,164.84	7,162.45	0.00	0.00	0.00
13,700.00	89.81	270.173	6,210.88	-781.26	-7,264.84	7,262.45	0.00	0.00	0.00
13,800.00	89.81	270.173	6,211.22	-780.96	-7,364.84	7,362.45	0.00	0.00	0.00
13,900.00	89.81	270.173	6,211.56	-780.66	-7,464.84	7,462.45	0.00	0.00	0.00
14,000.00	89.81	270.173	6,211.89	-780.36	-7,564.84	7,562.45	0.00	0.00	0.00
14,100.00	89.81	270.173	6,212.23	-780.06	-7,664.84	7,662.45	0.00	0.00	0.00
14,200.00	89.81	270.173	6,212.57	-779.76	-7,764.84	7,762.45	0.00	0.00	0.00
14,300.00	89.81	270.173	6,212.91	-779.45	-7,864.84	7,862.45	0.00	0.00	0.00
14,400.00	89.81	270.173	6,213.25	-779.15	-7,964.84	7,962.45	0.00	0.00	0.00
14,500.00	89.81	270.173	6,213.59	-778.85	-8,064.83	8,062.45	0.00	0.00	0.00
14,600.00	89.81	270.173	6,213.93	-778.55	-8,164.83	8,162.45	0.00	0.00	0.00
14,700.00	89.81	270.173	6,214.26	-778.25	-8,264.83	8,262.45	0.00	0.00	0.00
14,800.00	89.81	270.173	6,214.60	-777.95	-8,364.83	8,362.44	0.00	0.00	0.00

<b>Database:</b>	Casper District	<b>Local Co-ordinate Reference:</b>	Well Anschutz Equus Farm 3-62-4-5764CSB
<b>Company:</b>	Bill Barrett Corp.	<b>TVD Reference:</b>	GL 4591.4' & KB 20' @ 4611.40ft
<b>Project:</b>	Weld County, CO NAD 83	<b>MD Reference:</b>	GL 4591.4' & KB 20' @ 4611.40ft
<b>Site:</b>	Anschutz Equus Farms 3-62-4_5 SESE Pad	<b>North Reference:</b>	True
<b>Well:</b>	Anschutz Equus Farm 3-62-4-5764CSB	<b>Survey Calculation Method:</b>	Minimum Curvature
<b>Wellbore:</b>	OH		
<b>Design:</b>	Plan 1		

Planned Survey									
Measured Depth (ft)	Inclination (°)	Azimuth (°)	Vertical Depth (ft)	+N/-S (ft)	+E/-W (ft)	Vertical Section (ft)	Dogleg Rate (°/100ft)	Build Rate (°/100ft)	Turn Rate (°/100ft)
14,900.00	89.81	270.173	6,214.94	-777.65	-8,464.83	8,462.44	0.00	0.00	0.00
15,000.00	89.81	270.173	6,215.28	-777.35	-8,564.83	8,562.44	0.00	0.00	0.00
15,100.00	89.81	270.173	6,215.62	-777.04	-8,664.83	8,662.44	0.00	0.00	0.00
15,200.00	89.81	270.173	6,215.96	-776.74	-8,764.83	8,762.44	0.00	0.00	0.00
15,300.00	89.81	270.173	6,216.29	-776.44	-8,864.83	8,862.44	0.00	0.00	0.00
15,400.00	89.81	270.173	6,216.63	-776.14	-8,964.83	8,962.44	0.00	0.00	0.00
15,500.00	89.81	270.173	6,216.97	-775.84	-9,064.82	9,062.44	0.00	0.00	0.00
15,600.00	89.81	270.173	6,217.31	-775.54	-9,164.82	9,162.44	0.00	0.00	0.00
15,700.00	89.81	270.173	6,217.65	-775.24	-9,264.82	9,262.44	0.00	0.00	0.00
15,800.00	89.81	270.173	6,217.99	-774.93	-9,364.82	9,362.44	0.00	0.00	0.00
15,900.00	89.81	270.173	6,218.33	-774.63	-9,464.82	9,462.44	0.00	0.00	0.00
16,000.00	89.81	270.173	6,218.66	-774.33	-9,564.82	9,562.44	0.00	0.00	0.00
16,099.43	89.81	270.173	6,219.00	-774.03	-9,664.25	9,661.87	0.00	0.00	0.00
TD at 16099.43									

Design Targets									
Target Name	Dip Angle (°)	Dip Dir. (°)	TVD (ft)	+N/-S (ft)	+E/-W (ft)	Northing (usft)	Easting (usft)	Latitude	Longitude
- hit/miss target									
- Shape									
3-62-4-5764CSB LP	0.00	0.000	6,187.00	-802.51	-211.03	1,335,278.68	3,329,093.76	40° 14' 51.839 N	104° 19' 15.571 W
- plan misses target center by 0.01ft at 6646.11ft MD (6187.00 TVD, -802.52 N, -211.03 E)									
- Point									
3-62-4-5764CSB PBHL	0.00	0.000	6,219.00	-774.03	-9,664.25	1,335,181.39	3,319,641.01	40° 14' 52.102 N	104° 21' 17.489 W
- plan hits target center									
- Point									

Plan Annotations				
Measured Depth (ft)	Vertical Depth (ft)	Local Coordinates		Comment
		+N/-S (ft)	+E/-W (ft)	
1,000.00	1,000.00	0.00	0.00	Start Build 2.00
2,212.06	2,176.22	-230.56	103.20	Start 300.38 hold at 2212.06 MD
2,512.44	2,450.11	-343.12	153.59	Start Drop -1.00
4,936.55	4,802.55	-804.24	359.99	Start 811.50 hold at 4936.55 MD
5,748.05	5,614.05	-804.24	359.99	Start DLS 10.00 TFO 270.17
6,646.11	6,187.00	-802.52	-211.03	Start 9453.32 hold at 6646.11 MD
16,099.43	6,219.00	-774.03	-9,664.25	TD at 16099.43