

T3N, R62W, 6th P.M.

BILL BARRETT CORPORATION  
ANSCHUTZ EQUUS FARMS 3-62-4\_5 SESE PAD  
#3-62-4-5649C  
SE 1/4 SE 1/4, SECTION 4, T3N, R62W, 6th P.M.  
WELD COUNTY, COLORADO

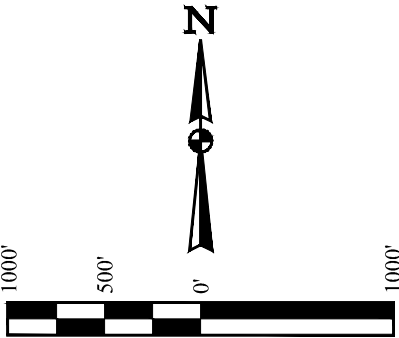
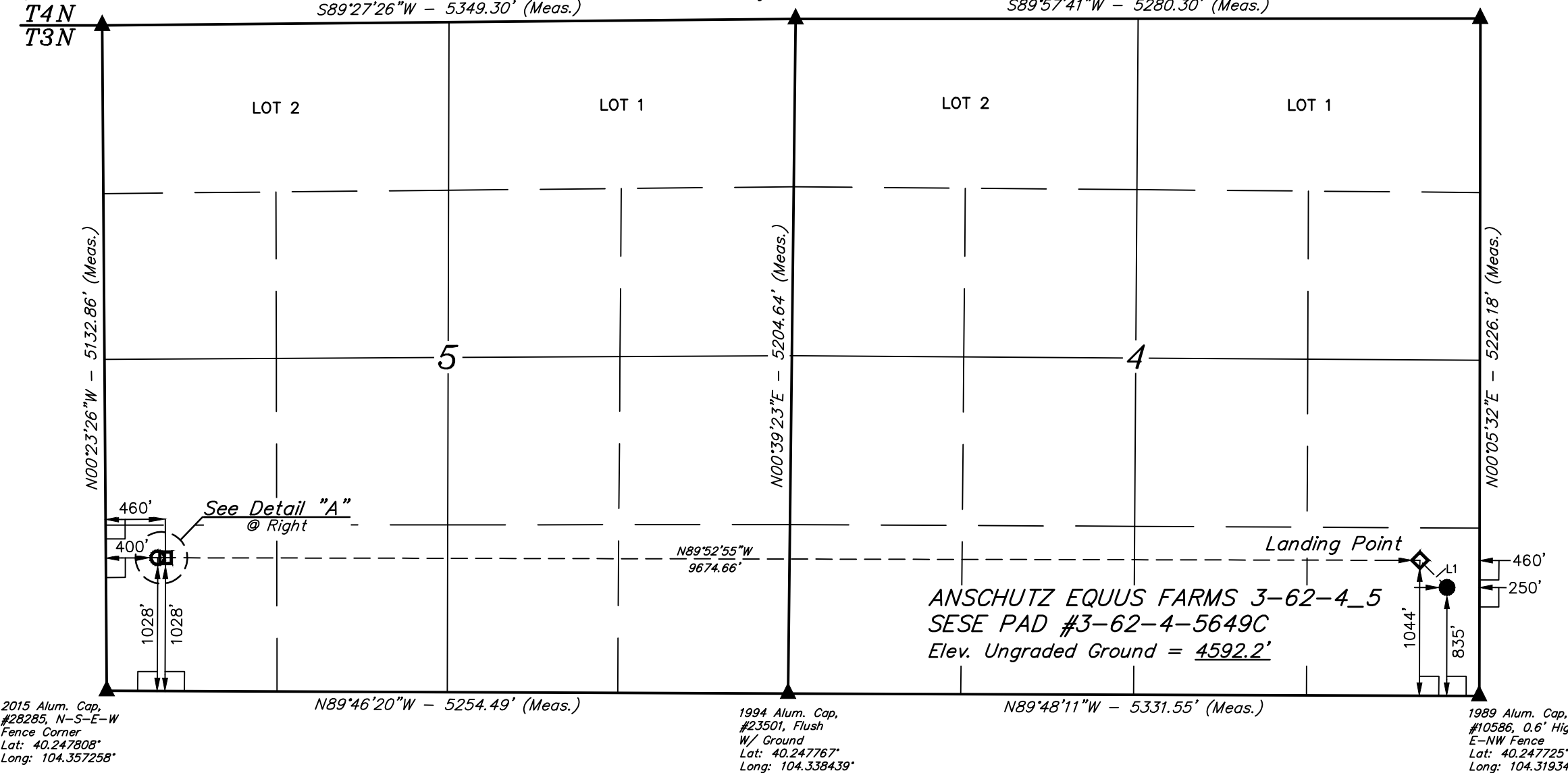
BASIS OF BEARINGS  
BASIS OF BEARINGS IS A G.P.S. OBSERVATION  
BASIS OF ELEVATION

SPOT ELEVATION LOCATED AT THE NORTHEAST CORNER OF SECTION 24, T5N, R62W, 6th. P.M. TAKEN FROM THE POINT OF ROCKS, QUADRANGLE, COLORADO, WELD COUNTY, 7.5 MINUTE QUAD (TOPOGRAPHIC MAP) PUBLISHED BY THE UNITED STATES DEPARTMENT OF THE INTERIOR, GEOLOGICAL SURVEY. SAID ELEVATION IS MARKED AS BEING 4530 FEET.

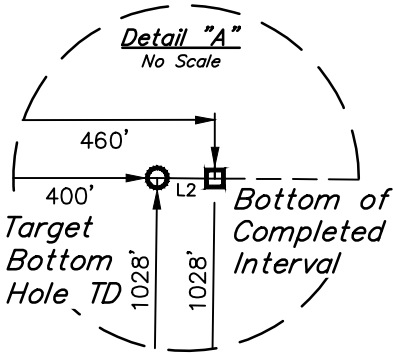
2015 Alum. Cap,  
#28285, Flush  
w/ Ground  
Lat: 40.261894°  
Long: 104.357403°

1994 Alum. Cap,  
#23501, E-W Fence  
Lat: 40.262047°  
Long: 104.338242°

2014 Alum. Cap,  
#28285, Flush w/  
Ground  
Lat: 40.262069°  
Long: 104.319325°



LINE TABLE		
LINE	DIRECTION	LENGTH
L1	N44°59'11"W	296.57'
L2	N89°52'55"W	60.00'



CERTIFICATE OF REGISTRATION  
THIS IS TO CERTIFY THAT THE ABOVE PLAT WAS PREPARED FOR MY FILED NOTES OF ACTUAL SURVEYS MADE BY ME OR UNDER MY SUPERVISION, AND THAT THE SAME ARE TRUE AND CORRECT TO THE BEST OF MY KNOWLEDGE AND BELIEF.

REGISTERED LAND SURVEYOR  
REGISTRATION NO. 28285  
STATE OF COLORADO  
2018-2025

PDOP = 1.3

REV: 4 08-23-17 J.J. (LP & BHL CHANGE, ADD BCI)

LEGEND:

- 90° SYMBOL
- PROPOSED WELLHEAD.
- LANDING POINT.
- BOTTOM OF COMPLETED INTERVAL.
- TARGET BOTTOM HOLE TD.
- SECTION CORNERS LOCATED. (NAD 83)

NAD 83 (SURFACE LOCATION)	NAD 83 (LANDING POINT)	NAD 83 (BTM. OF COMPLETED INT.)	NAD 83 (TARGET BOTTOM HOLE)
LATITUDE = 40°15'00.07" (40.250019)	LATITUDE = 40°15'02.14" (40.250594)	LATITUDE = 40°15'02.26" (40.250628)	LATITUDE = 40°15'02.26" (40.250628)
LONGITUDE = 104°19'12.85" (104.320236)	LONGITUDE = 104°19'15.55" (104.320986)	LONGITUDE = 104°21'20.30" (104.355639)	LONGITUDE = 104°21'21.07" (104.355853)
NAD 27 (SURFACE LOCATION)	NAD 27 (LANDING POINT)	NAD 27 (BTM. OF COMPLETED INT.)	NAD 27 (TARGET BOTTOM HOLE)
LATITUDE = 40°15'00.14" (40.250039)	LATITUDE = 40°15'02.21" (40.250614)	LATITUDE = 40°15'02.33" (40.250647)	LATITUDE = 40°15'02.33" (40.250647)
LONGITUDE = 104°19'11.02" (104.319728)	LONGITUDE = 104°19'13.72" (104.320478)	LONGITUDE = 104°21'18.47" (104.355131)	LONGITUDE = 104°21'19.24" (104.355344)
STATE PLANE NAD 83 (CO. NORTH)	STATE PLANE NAD 83 (CO. NORTH)	STATE PLANE NAD 83 (CO. NORTH)	STATE PLANE NAD 83 (CO. NORTH)
N: 1336114.33 E: 3329293.79	N: 1336321.09 E: 3329081.28	N: 1336205.98 E: 3319409.85	N: 1336205.26 E: 3319349.87
STATE PLANE NAD 27 (CO. NORTH)	STATE PLANE NAD 27 (CO. NORTH)	STATE PLANE NAD 27 (CO. NORTH)	STATE PLANE NAD 27 (CO. NORTH)
N: 336117.31 E: 2329444.22	N: 336324.06 E: 2329231.71	N: 336208.86 E: 2319560.28	N: 336208.14 E: 2319500.30



UELS, LLC  
Corporate Office \* 85 South 200 East  
Vernal, UT 84078 \* (435) 789-1017

SURVEYED BY	CHAD MEIERS, C.M.	11-12-15	SCALE
DRAWN BY	C.C.	01-05-16	1" = 1000'

WELL LOCATION PLAT