

PROJECT DETAILS: Weld County, CO NAD 83

Geodetic System: US State Plane 1983
Datum: North American Datum 1983
Ellipsoid: GRS 1980
Zone: Colorado Northern Zone
System Datum: Mean Sea Level
Local North: True

Project: Weld County, CO NAD 83
Site: Anschutz Equus Farms 3-62-4_5 CE2 Pad
Well: Anschutz Equus Farm 3-62-4-2532CN
Wellbore: OH
Design: Plan 1



Azimuths to True North
Magnetic North: 8.27°



Magnetic Field
Strength: 52357.4nT
Dip Angle: 66.92°
Date: 9/5/2017
Model: HDGM

Plan: Plan 1 (Anschutz Equus Farm 3-62-4-2532CN/OH)

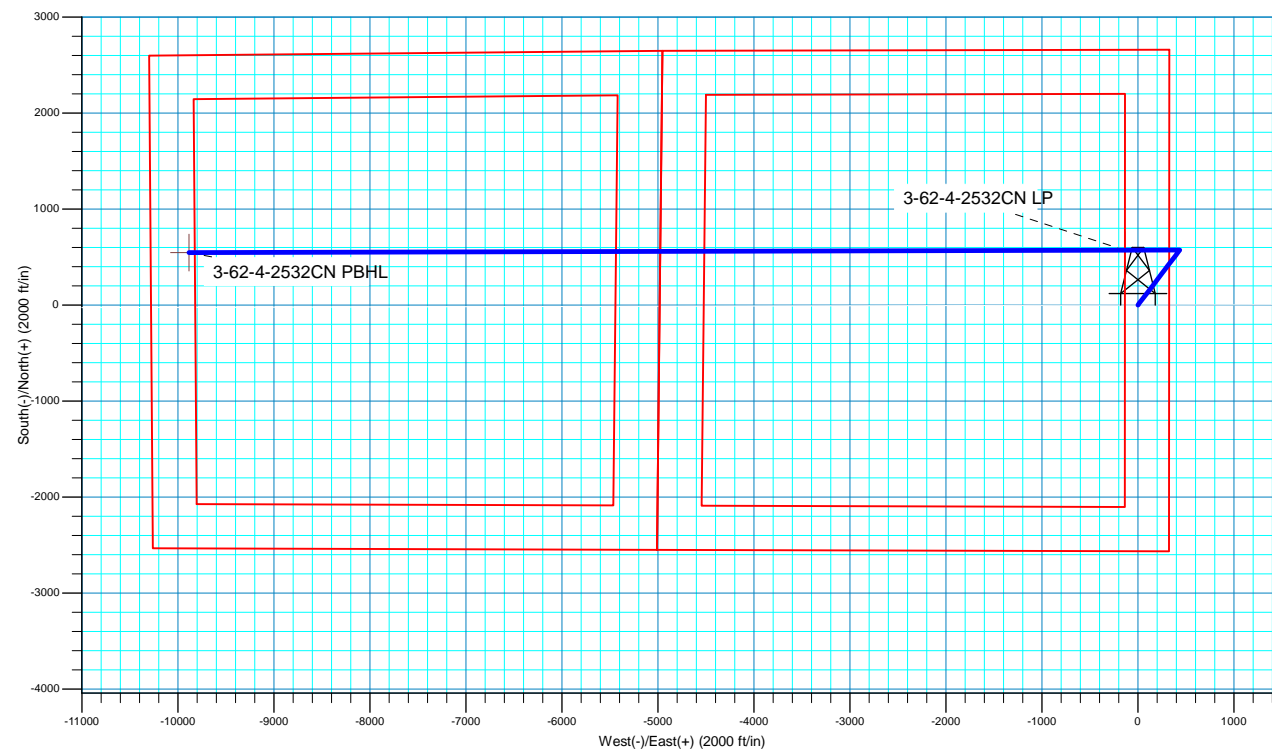
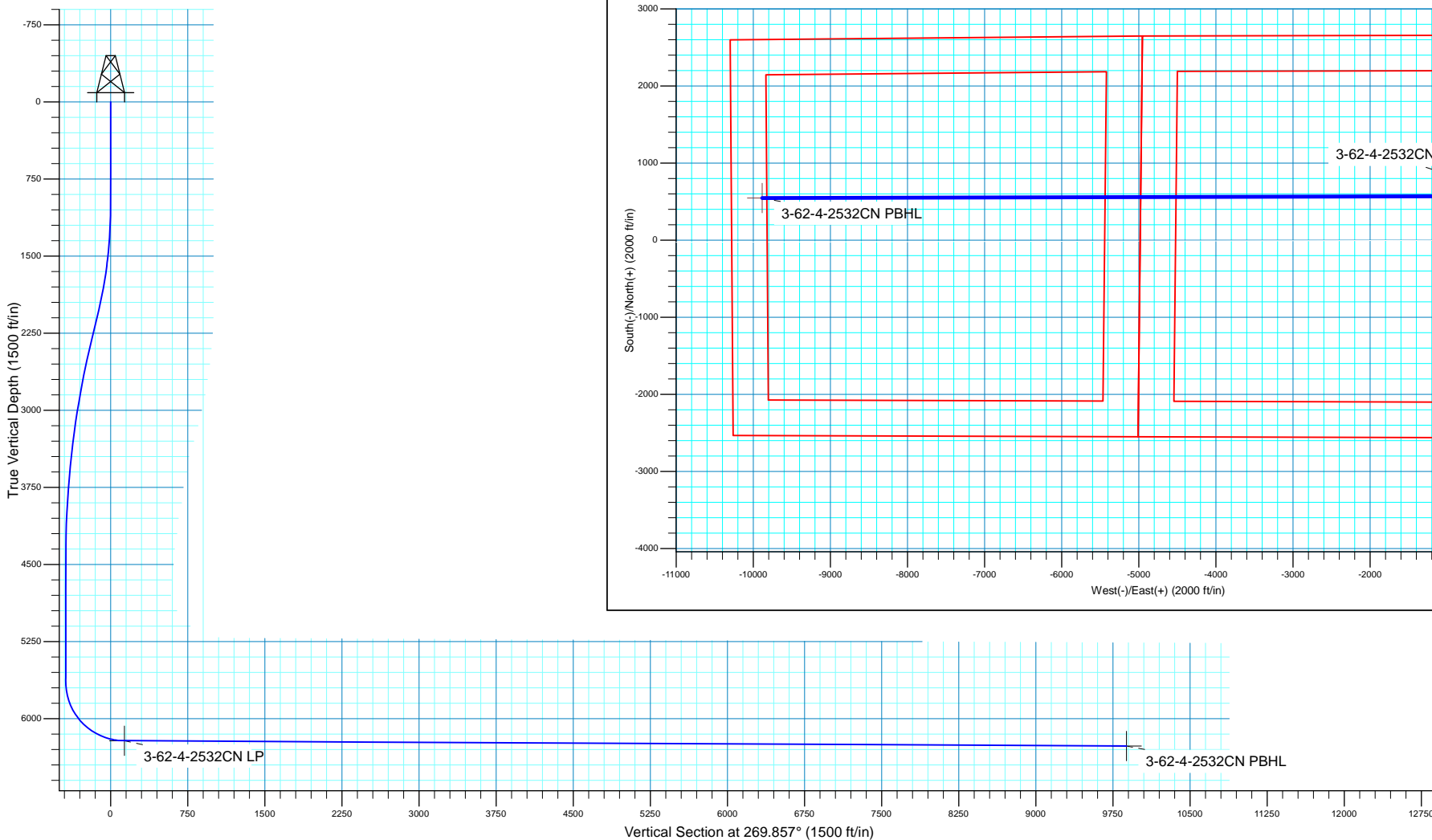
Created By: Seth Burstad Date: 9-06-2017

SECTION DETAILS

MD	Inc	Azi	TVD	+N/-S	+E/-W	Dleg	TFace	VSect
0.00	0.00	0.000	0.00	0.00	0.00	0.00	0.00	0.00
1000.00	0.00	0.000	1000.00	0.00	0.00	0.00	0.00	0.00
2084.40	21.69	37.201	2058.69	161.53	122.61	2.00	37.20	-123.02
2384.70	21.69	37.201	2337.73	249.93	189.71	0.00	0.00	-190.34
4553.49	0.00	0.000	4455.10	572.99	434.94	1.00	180.00	-436.37
5740.44	0.00	0.000	5642.05	572.99	434.94	0.00	0.00	-436.37
6637.50	89.71	269.858	6215.00	571.57	-135.08	10.00	269.86	133.65
16386.68	89.71	269.858	6265.00	547.33	-9884.10	0.00	0.00	9882.70

WELL DETAILS: Anschutz Equus Farm 3-62-4-2532CN

		GL 4612.6' & KB 20' @ 4632.60ft			Longitude
+N/-S	+E/-W	Northing	Easting	Latitude	
0.00	0.00	1337842.66	3329197.83	40° 15' 17.161 N	104° 19' 13.789 W





Bill Barrett Corporation

Bill Barrett Corp.

Weld County, CO NAD 83

Anschutz Equus Farms 3-62-4_5 CE2 Pad

Anschutz Equus Farm 3-62-4-2532CN

OH

Plan: Plan 1

Standard Planning Report

06 September, 2017



Scientific Drilling

www.scientificdrilling.com



Database:	Casper District	Local Co-ordinate Reference:	Well Anschutz Equus Farm 3-62-4-2532CN
Company:	Bill Barrett Corp.	TVD Reference:	GL 4612.6' & KB 20' @ 4632.60ft
Project:	Weld County, CO NAD 83	MD Reference:	GL 4612.6' & KB 20' @ 4632.60ft
Site:	Anschutz Equus Farms 3-62-4_5 CE2 Pad	North Reference:	True
Well:	Anschutz Equus Farm 3-62-4-2532CN	Survey Calculation Method:	Minimum Curvature
Wellbore:	OH		
Design:	Plan 1		

Project	Weld County, CO NAD 83		
Map System:	US State Plane 1983	System Datum:	Mean Sea Level
Geo Datum:	North American Datum 1983		
Map Zone:	Colorado Northern Zone		

Site	Anschutz Equus Farms 3-62-4_5 CE2 Pad, Site Center : Anschutz Equus Farm 3-62-4-2532CN			
Site Position:		Northing:	1,337,842.68 usft	Latitude: 40° 15' 17.161 N
From:	Lat/Long	Easting:	3,329,197.84 usft	Longitude: 104° 19' 13.789 W
Position Uncertainty:	0.00 ft	Slot Radius:	13.200 in	Grid Convergence: 0.76 °

Well	Anschutz Equus Farm 3-62-4-2532CN, 2565' FSL 325' FEL Sec 4 T3N R62W			
Well Position	+N/-S	-0.01 ft	Northing:	1,337,842.67 usft
	+E/-W	0.00 ft	Easting:	3,329,197.84 usft
Position Uncertainty		0.00 ft	Wellhead Elevation:	0.00 ft
			Ground Level:	4,612.60 ft

Wellbore	OH				
Magnetics	Model Name	Sample Date	Declination (°)	Dip Angle (°)	Field Strength (nT)
	HDGM	9/5/2017	8.27	66.92	52,357

Design	Plan 1			
Audit Notes:				
Version:	Phase:	PLAN	Tie On Depth:	0.00
Vertical Section:	Depth From (TVD)	+N/-S (ft)	+E/-W (ft)	Direction (°)
	0.00	0.00	0.00	269.857

Plan Sections										
Measured Depth (ft)	Inclination (°)	Azimuth (°)	Vertical Depth (ft)	+N/-S (ft)	+E/-W (ft)	Dogleg Rate (°/100ft)	Build Rate (°/100ft)	Turn Rate (°/100ft)	TFO (°)	Target
0.00	0.00	0.000	0.00	0.00	0.00	0.00	0.00	0.00	0.00	
1,000.00	0.00	0.000	1,000.00	0.00	0.00	0.00	0.00	0.00	0.00	
2,084.40	21.69	37.201	2,058.69	161.53	122.61	2.00	2.00	0.00	37.20	
2,384.70	21.69	37.201	2,337.73	249.93	189.71	0.00	0.00	0.00	0.00	
4,553.49	0.00	0.000	4,455.10	572.99	434.94	1.00	-1.00	0.00	180.00	
5,740.44	0.00	0.000	5,642.05	572.99	434.94	0.00	0.00	0.00	0.00	
6,637.50	89.71	269.857	6,215.00	571.57	-135.08	10.00	10.00	-10.05	269.86	
16,386.68	89.71	269.857	6,265.00	547.32	-9,884.10	0.00	0.00	0.00	0.00	3-62-4-2532CN PBH

Database:	Casper District	Local Co-ordinate Reference:	Well Anschutz Equus Farm 3-62-4-2532CN
Company:	Bill Barrett Corp.	TVD Reference:	GL 4612.6' & KB 20' @ 4632.60ft
Project:	Weld County, CO NAD 83	MD Reference:	GL 4612.6' & KB 20' @ 4632.60ft
Site:	Anschutz Equus Farms 3-62-4_5 CE2 Pad	North Reference:	True
Well:	Anschutz Equus Farm 3-62-4-2532CN	Survey Calculation Method:	Minimum Curvature
Wellbore:	OH		
Design:	Plan 1		

Planned Survey									
Measured Depth (ft)	Inclination (°)	Azimuth (°)	Vertical Depth (ft)	+N/-S (ft)	+E/-W (ft)	Vertical Section (ft)	Dogleg Rate (°/100ft)	Build Rate (°/100ft)	Turn Rate (°/100ft)
0.00	0.00	0.000	0.00	0.00	0.00	0.00	0.00	0.00	0.00
100.00	0.00	0.000	100.00	0.00	0.00	0.00	0.00	0.00	0.00
200.00	0.00	0.000	200.00	0.00	0.00	0.00	0.00	0.00	0.00
300.00	0.00	0.000	300.00	0.00	0.00	0.00	0.00	0.00	0.00
400.00	0.00	0.000	400.00	0.00	0.00	0.00	0.00	0.00	0.00
500.00	0.00	0.000	500.00	0.00	0.00	0.00	0.00	0.00	0.00
600.00	0.00	0.000	600.00	0.00	0.00	0.00	0.00	0.00	0.00
700.00	0.00	0.000	700.00	0.00	0.00	0.00	0.00	0.00	0.00
800.00	0.00	0.000	800.00	0.00	0.00	0.00	0.00	0.00	0.00
900.00	0.00	0.000	900.00	0.00	0.00	0.00	0.00	0.00	0.00
1,000.00	0.00	0.000	1,000.00	0.00	0.00	0.00	0.00	0.00	0.00
Start Build 2.00									
1,100.00	2.00	37.201	1,099.98	1.39	1.06	-1.06	2.00	2.00	0.00
1,200.00	4.00	37.201	1,199.84	5.56	4.22	-4.23	2.00	2.00	0.00
1,300.00	6.00	37.201	1,299.45	12.50	9.49	-9.52	2.00	2.00	0.00
1,400.00	8.00	37.201	1,398.70	22.21	16.86	-16.91	2.00	2.00	0.00
1,500.00	10.00	37.201	1,497.47	34.67	26.31	-26.40	2.00	2.00	0.00
1,600.00	12.00	37.201	1,595.62	49.86	37.85	-37.97	2.00	2.00	0.00
1,700.00	14.00	37.201	1,693.06	67.78	51.45	-51.62	2.00	2.00	0.00
1,800.00	16.00	37.201	1,789.64	88.40	67.10	-67.32	2.00	2.00	0.00
1,900.00	18.00	37.201	1,885.27	111.68	84.77	-85.05	2.00	2.00	0.00
2,000.00	20.00	37.201	1,979.82	137.61	104.46	-104.80	2.00	2.00	0.00
2,084.40	21.69	37.201	2,058.69	161.53	122.61	-123.02	2.00	2.00	0.00
Start 300.30 hold at 2084.40 MD									
2,100.00	21.69	37.201	2,073.18	166.12	126.10	-126.51	0.00	0.00	0.00
2,200.00	21.69	37.201	2,166.11	195.56	148.44	-148.93	0.00	0.00	0.00
2,300.00	21.69	37.201	2,259.03	225.00	170.79	-171.35	0.00	0.00	0.00
2,384.70	21.69	37.201	2,337.73	249.93	189.71	-190.34	0.00	0.00	0.00
Start Drop -1.00									
2,400.00	21.53	37.201	2,351.96	254.42	193.12	-193.75	1.00	-1.00	0.00
2,500.00	20.53	37.201	2,445.29	283.01	214.82	-215.53	1.00	-1.00	0.00
2,600.00	19.53	37.201	2,539.24	310.29	235.53	-236.31	1.00	-1.00	0.00
2,700.00	18.53	37.201	2,633.77	336.27	255.25	-256.09	1.00	-1.00	0.00
2,800.00	17.53	37.201	2,728.85	360.93	273.97	-274.87	1.00	-1.00	0.00
2,900.00	16.53	37.201	2,824.47	384.26	291.68	-292.64	1.00	-1.00	0.00
3,000.00	15.53	37.201	2,920.57	406.27	308.38	-309.40	1.00	-1.00	0.00
3,100.00	14.53	37.201	3,017.15	426.93	324.07	-325.13	1.00	-1.00	0.00
3,200.00	13.53	37.201	3,114.16	446.24	338.73	-339.84	1.00	-1.00	0.00
3,300.00	12.53	37.201	3,211.58	464.21	352.37	-353.53	1.00	-1.00	0.00
3,400.00	11.53	37.201	3,309.39	480.82	364.97	-366.17	1.00	-1.00	0.00
3,500.00	10.53	37.201	3,407.54	496.06	376.55	-377.78	1.00	-1.00	0.00
3,600.00	9.53	37.201	3,506.00	509.94	387.08	-388.35	1.00	-1.00	0.00
3,700.00	8.53	37.201	3,604.76	522.45	396.58	-397.88	1.00	-1.00	0.00
3,800.00	7.53	37.201	3,703.78	533.58	405.03	-406.36	1.00	-1.00	0.00
3,900.00	6.53	37.201	3,803.03	543.34	412.43	-413.79	1.00	-1.00	0.00
4,000.00	5.53	37.201	3,902.47	551.71	418.79	-420.16	1.00	-1.00	0.00
4,100.00	4.53	37.201	4,002.08	558.70	424.09	-425.49	1.00	-1.00	0.00
4,200.00	3.53	37.201	4,101.83	564.31	428.35	-429.76	1.00	-1.00	0.00
4,300.00	2.53	37.201	4,201.69	568.52	431.55	-432.97	1.00	-1.00	0.00
4,400.00	1.53	37.201	4,301.63	571.35	433.70	-435.12	1.00	-1.00	0.00
4,500.00	0.53	37.201	4,401.61	572.79	434.79	-436.22	1.00	-1.00	0.00
4,553.49	0.00	0.000	4,455.10	572.99	434.94	-436.37	1.00	-1.00	0.00
Start 1186.95 hold at 4553.49 MD									
4,600.00	0.00	0.000	4,501.61	572.99	434.94	-436.37	0.00	0.00	0.00

Database:	Casper District	Local Co-ordinate Reference:	Well Anschutz Equus Farm 3-62-4-2532CN
Company:	Bill Barrett Corp.	TVD Reference:	GL 4612.6' & KB 20' @ 4632.60ft
Project:	Weld County, CO NAD 83	MD Reference:	GL 4612.6' & KB 20' @ 4632.60ft
Site:	Anschutz Equus Farms 3-62-4_5 CE2 Pad	North Reference:	True
Well:	Anschutz Equus Farm 3-62-4-2532CN	Survey Calculation Method:	Minimum Curvature
Wellbore:	OH		
Design:	Plan 1		

Planned Survey									
Measured Depth (ft)	Inclination (°)	Azimuth (°)	Vertical Depth (ft)	+N/-S (ft)	+E/-W (ft)	Vertical Section (ft)	Dogleg Rate (°/100ft)	Build Rate (°/100ft)	Turn Rate (°/100ft)
4,700.00	0.00	0.000	4,601.61	572.99	434.94	-436.37	0.00	0.00	0.00
4,800.00	0.00	0.000	4,701.61	572.99	434.94	-436.37	0.00	0.00	0.00
4,900.00	0.00	0.000	4,801.61	572.99	434.94	-436.37	0.00	0.00	0.00
5,000.00	0.00	0.000	4,901.61	572.99	434.94	-436.37	0.00	0.00	0.00
5,100.00	0.00	0.000	5,001.61	572.99	434.94	-436.37	0.00	0.00	0.00
5,200.00	0.00	0.000	5,101.61	572.99	434.94	-436.37	0.00	0.00	0.00
5,300.00	0.00	0.000	5,201.61	572.99	434.94	-436.37	0.00	0.00	0.00
5,400.00	0.00	0.000	5,301.61	572.99	434.94	-436.37	0.00	0.00	0.00
5,500.00	0.00	0.000	5,401.61	572.99	434.94	-436.37	0.00	0.00	0.00
5,600.00	0.00	0.000	5,501.61	572.99	434.94	-436.37	0.00	0.00	0.00
5,700.00	0.00	0.000	5,601.61	572.99	434.94	-436.37	0.00	0.00	0.00
5,740.44	0.00	0.000	5,642.05	572.99	434.94	-436.37	0.00	0.00	0.00
Start DLS 10.00 TFO 269.86									
5,800.00	5.96	269.857	5,701.50	572.98	431.85	-433.28	10.00	10.00	0.00
5,900.00	15.96	269.857	5,799.55	572.94	412.87	-414.29	10.00	10.00	0.00
6,000.00	25.96	269.857	5,892.82	572.85	377.15	-378.58	10.00	10.00	0.00
6,100.00	35.96	269.857	5,978.47	572.72	325.77	-327.20	10.00	10.00	0.00
6,200.00	45.96	269.857	6,053.90	572.56	260.31	-261.74	10.00	10.00	0.00
6,300.00	55.96	269.857	6,116.81	572.36	182.74	-184.17	10.00	10.00	0.00
6,400.00	65.96	269.857	6,165.29	572.15	95.43	-96.86	10.00	10.00	0.00
6,500.00	75.96	269.857	6,197.88	571.91	1.02	-2.45	10.00	10.00	0.00
6,600.00	85.96	269.857	6,213.58	571.67	-97.61	96.18	10.00	10.00	0.00
6,637.50	89.71	269.857	6,215.00	571.57	-135.08	133.65	10.00	10.00	0.00
Start 9749.18 hold at 6637.50 MD									
6,700.00	89.71	269.857	6,215.32	571.42	-197.57	196.15	0.00	0.00	0.00
6,800.00	89.71	269.857	6,215.83	571.17	-297.57	296.15	0.00	0.00	0.00
6,900.00	89.71	269.857	6,216.35	570.92	-397.57	396.14	0.00	0.00	0.00
7,000.00	89.71	269.857	6,216.86	570.67	-497.57	496.14	0.00	0.00	0.00
7,100.00	89.71	269.857	6,217.37	570.42	-597.57	596.14	0.00	0.00	0.00
7,200.00	89.71	269.857	6,217.89	570.17	-697.57	696.14	0.00	0.00	0.00
7,300.00	89.71	269.857	6,218.40	569.92	-797.56	796.14	0.00	0.00	0.00
7,400.00	89.71	269.857	6,218.91	569.68	-897.56	896.14	0.00	0.00	0.00
7,500.00	89.71	269.857	6,219.42	569.43	-997.56	996.14	0.00	0.00	0.00
7,600.00	89.71	269.857	6,219.94	569.18	-1,097.56	1,096.14	0.00	0.00	0.00
7,700.00	89.71	269.857	6,220.45	568.93	-1,197.56	1,196.13	0.00	0.00	0.00
7,800.00	89.71	269.857	6,220.96	568.68	-1,297.56	1,296.13	0.00	0.00	0.00
7,900.00	89.71	269.857	6,221.48	568.43	-1,397.55	1,396.13	0.00	0.00	0.00
8,000.00	89.71	269.857	6,221.99	568.18	-1,497.55	1,496.13	0.00	0.00	0.00
8,100.00	89.71	269.857	6,222.50	567.93	-1,597.55	1,596.13	0.00	0.00	0.00
8,200.00	89.71	269.857	6,223.01	567.69	-1,697.55	1,696.13	0.00	0.00	0.00
8,300.00	89.71	269.857	6,223.53	567.44	-1,797.55	1,796.13	0.00	0.00	0.00
8,400.00	89.71	269.857	6,224.04	567.19	-1,897.55	1,896.13	0.00	0.00	0.00
8,500.00	89.71	269.857	6,224.55	566.94	-1,997.55	1,996.12	0.00	0.00	0.00
8,600.00	89.71	269.857	6,225.07	566.69	-2,097.54	2,096.12	0.00	0.00	0.00
8,700.00	89.71	269.857	6,225.58	566.44	-2,197.54	2,196.12	0.00	0.00	0.00
8,800.00	89.71	269.857	6,226.09	566.19	-2,297.54	2,296.12	0.00	0.00	0.00
8,900.00	89.71	269.857	6,226.60	565.94	-2,397.54	2,396.12	0.00	0.00	0.00
9,000.00	89.71	269.857	6,227.12	565.70	-2,497.54	2,496.12	0.00	0.00	0.00
9,100.00	89.71	269.857	6,227.63	565.45	-2,597.54	2,596.12	0.00	0.00	0.00
9,200.00	89.71	269.857	6,228.14	565.20	-2,697.53	2,696.11	0.00	0.00	0.00
9,300.00	89.71	269.857	6,228.66	564.95	-2,797.53	2,796.11	0.00	0.00	0.00
9,400.00	89.71	269.857	6,229.17	564.70	-2,897.53	2,896.11	0.00	0.00	0.00
9,500.00	89.71	269.857	6,229.68	564.45	-2,997.53	2,996.11	0.00	0.00	0.00

Database:	Casper District	Local Co-ordinate Reference:	Well Anschutz Equus Farm 3-62-4-2532CN
Company:	Bill Barrett Corp.	TVD Reference:	GL 4612.6' & KB 20' @ 4632.60ft
Project:	Weld County, CO NAD 83	MD Reference:	GL 4612.6' & KB 20' @ 4632.60ft
Site:	Anschutz Equus Farms 3-62-4_5 CE2 Pad	North Reference:	True
Well:	Anschutz Equus Farm 3-62-4-2532CN	Survey Calculation Method:	Minimum Curvature
Wellbore:	OH		
Design:	Plan 1		

Planned Survey									
Measured Depth (ft)	Inclination (°)	Azimuth (°)	Vertical Depth (ft)	+N/-S (ft)	+E/-W (ft)	Vertical Section (ft)	Dogleg Rate (°/100ft)	Build Rate (°/100ft)	Turn Rate (°/100ft)
9,600.00	89.71	269.857	6,230.19	564.20	-3,097.53	3,096.11	0.00	0.00	0.00
9,700.00	89.71	269.857	6,230.71	563.96	-3,197.53	3,196.11	0.00	0.00	0.00
9,800.00	89.71	269.857	6,231.22	563.71	-3,297.52	3,296.11	0.00	0.00	0.00
9,900.00	89.71	269.857	6,231.73	563.46	-3,397.52	3,396.11	0.00	0.00	0.00
10,000.00	89.71	269.857	6,232.25	563.21	-3,497.52	3,496.10	0.00	0.00	0.00
10,100.00	89.71	269.857	6,232.76	562.96	-3,597.52	3,596.10	0.00	0.00	0.00
10,200.00	89.71	269.857	6,233.27	562.71	-3,697.52	3,696.10	0.00	0.00	0.00
10,300.00	89.71	269.857	6,233.78	562.46	-3,797.52	3,796.10	0.00	0.00	0.00
10,400.00	89.71	269.857	6,234.30	562.21	-3,897.51	3,896.10	0.00	0.00	0.00
10,500.00	89.71	269.857	6,234.81	561.97	-3,997.51	3,996.10	0.00	0.00	0.00
10,600.00	89.71	269.857	6,235.32	561.72	-4,097.51	4,096.10	0.00	0.00	0.00
10,700.00	89.71	269.857	6,235.84	561.47	-4,197.51	4,196.10	0.00	0.00	0.00
10,800.00	89.71	269.857	6,236.35	561.22	-4,297.51	4,296.09	0.00	0.00	0.00
10,900.00	89.71	269.857	6,236.86	560.97	-4,397.51	4,396.09	0.00	0.00	0.00
11,000.00	89.71	269.857	6,237.37	560.72	-4,497.50	4,496.09	0.00	0.00	0.00
11,100.00	89.71	269.857	6,237.89	560.47	-4,597.50	4,596.09	0.00	0.00	0.00
11,200.00	89.71	269.857	6,238.40	560.22	-4,697.50	4,696.09	0.00	0.00	0.00
11,300.00	89.71	269.857	6,238.91	559.98	-4,797.50	4,796.09	0.00	0.00	0.00
11,400.00	89.71	269.857	6,239.43	559.73	-4,897.50	4,896.09	0.00	0.00	0.00
11,500.00	89.71	269.857	6,239.94	559.48	-4,997.50	4,996.08	0.00	0.00	0.00
11,600.00	89.71	269.857	6,240.45	559.23	-5,097.49	5,096.08	0.00	0.00	0.00
11,700.00	89.71	269.857	6,240.96	558.98	-5,197.49	5,196.08	0.00	0.00	0.00
11,800.00	89.71	269.857	6,241.48	558.73	-5,297.49	5,296.08	0.00	0.00	0.00
11,900.00	89.71	269.857	6,241.99	558.48	-5,397.49	5,396.08	0.00	0.00	0.00
12,000.00	89.71	269.857	6,242.50	558.23	-5,497.49	5,496.08	0.00	0.00	0.00
12,100.00	89.71	269.857	6,243.02	557.99	-5,597.49	5,596.08	0.00	0.00	0.00
12,200.00	89.71	269.857	6,243.53	557.74	-5,697.49	5,696.08	0.00	0.00	0.00
12,300.00	89.71	269.857	6,244.04	557.49	-5,797.48	5,796.07	0.00	0.00	0.00
12,400.00	89.71	269.857	6,244.55	557.24	-5,897.48	5,896.07	0.00	0.00	0.00
12,500.00	89.71	269.857	6,245.07	556.99	-5,997.48	5,996.07	0.00	0.00	0.00
12,600.00	89.71	269.857	6,245.58	556.74	-6,097.48	6,096.07	0.00	0.00	0.00
12,700.00	89.71	269.857	6,246.09	556.49	-6,197.48	6,196.07	0.00	0.00	0.00
12,800.00	89.71	269.857	6,246.61	556.24	-6,297.48	6,296.07	0.00	0.00	0.00
12,900.00	89.71	269.857	6,247.12	556.00	-6,397.47	6,396.07	0.00	0.00	0.00
13,000.00	89.71	269.857	6,247.63	555.75	-6,497.47	6,496.06	0.00	0.00	0.00
13,100.00	89.71	269.857	6,248.14	555.50	-6,597.47	6,596.06	0.00	0.00	0.00
13,200.00	89.71	269.857	6,248.66	555.25	-6,697.47	6,696.06	0.00	0.00	0.00
13,300.00	89.71	269.857	6,249.17	555.00	-6,797.47	6,796.06	0.00	0.00	0.00
13,400.00	89.71	269.857	6,249.68	554.75	-6,897.47	6,896.06	0.00	0.00	0.00
13,500.00	89.71	269.857	6,250.20	554.50	-6,997.46	6,996.06	0.00	0.00	0.00
13,600.00	89.71	269.857	6,250.71	554.26	-7,097.46	7,096.06	0.00	0.00	0.00
13,700.00	89.71	269.857	6,251.22	554.01	-7,197.46	7,196.06	0.00	0.00	0.00
13,800.00	89.71	269.857	6,251.73	553.76	-7,297.46	7,296.05	0.00	0.00	0.00
13,900.00	89.71	269.857	6,252.25	553.51	-7,397.46	7,396.05	0.00	0.00	0.00
14,000.00	89.71	269.857	6,252.76	553.26	-7,497.46	7,496.05	0.00	0.00	0.00
14,100.00	89.71	269.857	6,253.27	553.01	-7,597.45	7,596.05	0.00	0.00	0.00
14,200.00	89.71	269.857	6,253.79	552.76	-7,697.45	7,696.05	0.00	0.00	0.00
14,300.00	89.71	269.857	6,254.30	552.51	-7,797.45	7,796.05	0.00	0.00	0.00
14,400.00	89.71	269.857	6,254.81	552.27	-7,897.45	7,896.05	0.00	0.00	0.00
14,500.00	89.71	269.857	6,255.32	552.02	-7,997.45	7,996.05	0.00	0.00	0.00
14,600.00	89.71	269.857	6,255.84	551.77	-8,097.45	8,096.04	0.00	0.00	0.00
14,700.00	89.71	269.857	6,256.35	551.52	-8,197.44	8,196.04	0.00	0.00	0.00
14,800.00	89.71	269.857	6,256.86	551.27	-8,297.44	8,296.04	0.00	0.00	0.00
14,900.00	89.71	269.857	6,257.38	551.02	-8,397.44	8,396.04	0.00	0.00	0.00

Database:	Casper District	Local Co-ordinate Reference:	Well Anschutz Equus Farm 3-62-4-2532CN
Company:	Bill Barrett Corp.	TVD Reference:	GL 4612.6' & KB 20' @ 4632.60ft
Project:	Weld County, CO NAD 83	MD Reference:	GL 4612.6' & KB 20' @ 4632.60ft
Site:	Anschutz Equus Farms 3-62-4_5 CE2 Pad	North Reference:	True
Well:	Anschutz Equus Farm 3-62-4-2532CN	Survey Calculation Method:	Minimum Curvature
Wellbore:	OH		
Design:	Plan 1		

Planned Survey										
Measured Depth (ft)	Inclination (°)	Azimuth (°)	Vertical Depth (ft)	+N/-S (ft)	+E/-W (ft)	Vertical Section (ft)	Dogleg Rate (°/100ft)	Build Rate (°/100ft)	Turn Rate (°/100ft)	
15,000.00	89.71	269.857	6,257.89	550.77	-8,497.44	8,496.04	0.00	0.00	0.00	
15,100.00	89.71	269.857	6,258.40	550.52	-8,597.44	8,596.04	0.00	0.00	0.00	
15,200.00	89.71	269.857	6,258.91	550.28	-8,697.44	8,696.04	0.00	0.00	0.00	
15,300.00	89.71	269.857	6,259.43	550.03	-8,797.43	8,796.03	0.00	0.00	0.00	
15,400.00	89.71	269.857	6,259.94	549.78	-8,897.43	8,896.03	0.00	0.00	0.00	
15,500.00	89.71	269.857	6,260.45	549.53	-8,997.43	8,996.03	0.00	0.00	0.00	
15,600.00	89.71	269.857	6,260.97	549.28	-9,097.43	9,096.03	0.00	0.00	0.00	
15,700.00	89.71	269.857	6,261.48	549.03	-9,197.43	9,196.03	0.00	0.00	0.00	
15,800.00	89.71	269.857	6,261.99	548.78	-9,297.43	9,296.03	0.00	0.00	0.00	
15,900.00	89.71	269.857	6,262.50	548.53	-9,397.43	9,396.03	0.00	0.00	0.00	
16,000.00	89.71	269.857	6,263.02	548.29	-9,497.42	9,496.03	0.00	0.00	0.00	
16,100.00	89.71	269.857	6,263.53	548.04	-9,597.42	9,596.02	0.00	0.00	0.00	
16,200.00	89.71	269.857	6,264.04	547.79	-9,697.42	9,696.02	0.00	0.00	0.00	
16,300.00	89.71	269.857	6,264.56	547.54	-9,797.42	9,796.02	0.00	0.00	0.00	
16,386.68	89.71	269.857	6,265.00	547.32	-9,884.10	9,882.70	0.00	0.00	0.00	
TD at 16386.68										

Design Targets										
Target Name	Dip Angle (°)	Dip Dir. (°)	TVD (ft)	+N/-S (ft)	+E/-W (ft)	Northing (usft)	Easting (usft)	Latitude	Longitude	
3-62-4-2532CN LP	0.00	0.000	6,215.00	571.58	-135.08	1,338,412.40	3,329,055.16	40° 15' 22.810 N	104° 19' 15.532 W	
- hit/miss target										
- Shape										
- plan misses target center by 0.01ft at 6637.51ft MD (6215.00 TVD, 571.57 N, -135.08 E)										
- Point										
3-62-4-2532CN PBHL	0.00	0.000	6,265.00	547.32	-9,884.10	1,338,258.47	3,319,307.36	40° 15' 22.550 N	104° 21' 21.280 W	
- plan hits target center										
- Point										

Plan Annotations					
Measured Depth (ft)	Vertical Depth (ft)	Local Coordinates			
		+N/-S (ft)	+E/-W (ft)	Comment	
1,000.00	1,000.00	0.00	0.00	Start Build 2.00	
2,084.40	2,058.69	161.53	122.61	Start 300.30 hold at 2084.40 MD	
2,384.70	2,337.73	249.93	189.71	Start Drop -1.00	
4,553.49	4,455.10	572.99	434.94	Start 1186.95 hold at 4553.49 MD	
5,740.44	5,642.05	572.99	434.94	Start DLS 10.00 TFO 269.86	
6,637.50	6,215.00	571.57	-135.08	Start 9749.18 hold at 6637.50 MD	
16,386.68	6,265.00	547.32	-9,884.10	TD at 16386.68	