

**PROJECT DETAILS: Weld County, CO NAD 83**

Geodetic System: US State Plane 1983  
 Datum: North American Datum 1983  
 Ellipsoid: GRS 1980  
 Zone: Colorado Northern Zone  
 System Datum: Mean Sea Level  
 Local North: True

Project: Weld County, CO NAD 83  
 Site: Anschutz Equus Farms 3-62-4 .5 CE2 Pad  
 Well: Anschutz Equus Farm 3-62-4-2532CS  
 Wellbore: OH  
 Design: Plan 1



Azimuths to True North  
 Magnetic North: 8.27°



Magnetic Field  
 Strength: 52357.4nT  
 Dip Angle: 66.92°  
 Date: 9/5/2017  
 Model: HDGM

Plan: Plan 1 (Anschutz Equus Farm 3-62-4-2532CS/OH)

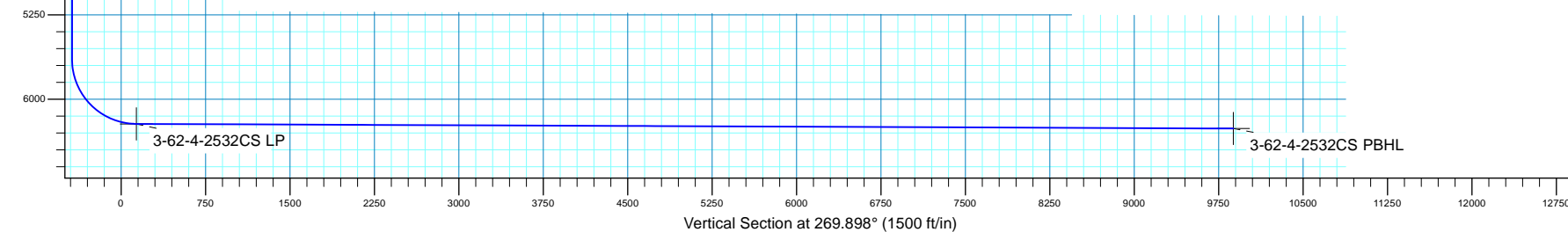
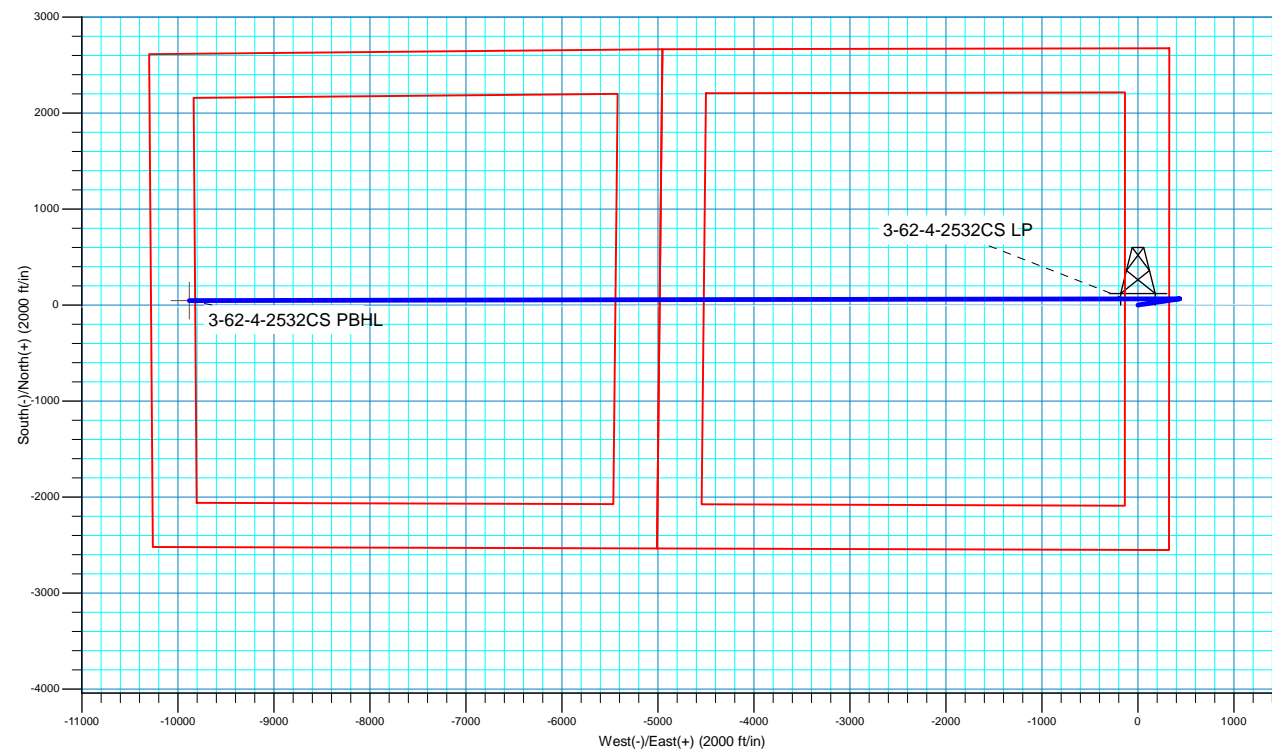
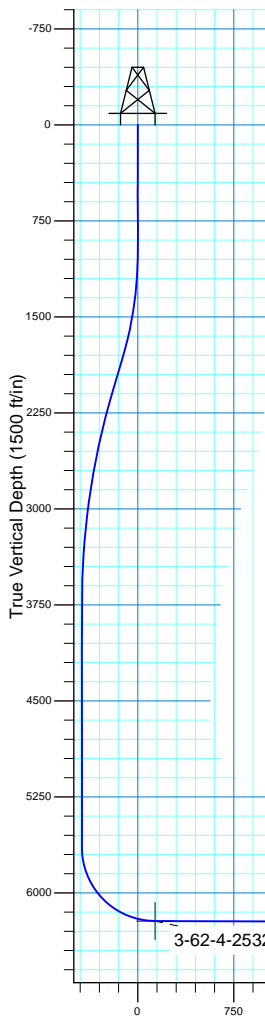
Created By: Seth Burstad Date: 9-06-2017

**SECTION DETAILS**

MD	Inc	Azi	TVD	+N/-S	+E/-W	Dleg	TFace	VSect
0.00	0.00	0.000	0.00	0.00	0.00	0.00	0.00	0.00
1000.00	0.00	0.000	1000.00	0.00	0.00	0.00	0.00	0.00
1826.17	16.52	81.398	1814.77	17.69	116.98	2.00	81.40	-117.01
2126.78	16.52	81.398	2102.96	30.48	201.51	0.00	0.00	-201.56
3779.13	0.00	0.000	3732.50	65.87	435.46	1.00	180.00	-435.58
5692.68	0.00	0.000	5646.05	65.87	435.46	0.00	0.00	-435.58
6590.27	89.76	269.898	6219.00	64.86	-135.09	10.00	269.90	134.97
16335.68	89.76	269.898	6260.00	47.52	-9880.39	0.00	0.00	9880.29

**WELL DETAILS: Anschutz Equus Farm 3-62-4-2532CS**

+N/-S	+E/-W	GL 4612.6' & KB 20' @ 4632.60ft	4612.60	Longitude
Northing	Easting	Latitude		
0.00	0.00	1337828.46	3329198.02	40° 15' 17.021 N 104° 19' 13.789 W





**Bill Barrett Corporation**

## **Bill Barrett Corp.**

**Weld County, CO NAD 83**

**Anschutz Equus Farms 3-62-4\_5 CE2 Pad**

**Anschutz Equus Farm 3-62-4-2532CS**

**OH**

**Plan: Plan 1**

## **Standard Planning Report**

**06 September, 2017**



**Scientific Drilling**

[www.scientificdrilling.com](http://www.scientificdrilling.com)



<b>Database:</b>	Casper District	<b>Local Co-ordinate Reference:</b>	Well Anschutz Equus Farm 3-62-4-2532CS
<b>Company:</b>	Bill Barrett Corp.	<b>TVD Reference:</b>	GL 4612.6' & KB 20' @ 4632.60ft
<b>Project:</b>	Weld County, CO NAD 83	<b>MD Reference:</b>	GL 4612.6' & KB 20' @ 4632.60ft
<b>Site:</b>	Anschutz Equus Farms 3-62-4_5 CE2 Pad	<b>North Reference:</b>	True
<b>Well:</b>	Anschutz Equus Farm 3-62-4-2532CS	<b>Survey Calculation Method:</b>	Minimum Curvature
<b>Wellbore:</b>	OH		
<b>Design:</b>	Plan 1		

<b>Project</b>	Weld County, CO NAD 83		
<b>Map System:</b>	US State Plane 1983	<b>System Datum:</b>	Mean Sea Level
<b>Geo Datum:</b>	North American Datum 1983		
<b>Map Zone:</b>	Colorado Northern Zone		

Site						Anschutz Equus Farms 3-62-4_5 CE2 Pad, Site Center : Anschutz Equus Farm 3-62-4-2532CN											
Site Position:			Northing:			1,337,842.68 usft			Latitude:			40° 15' 17.161 N					
From:			Lat/Long			Easting:			3,329,197.84 usft			Longitude:			104° 19' 13.789 W		
Position Uncertainty:			0.00 ft			Slot Radius:			13.200 in			Grid Convergence:			0.76 °		

Well	Anschutz Equus Farm 3-62-4-2532CS, 2550' FSL 325' FEL Sec 4 T3N R62W					
Well Position	+N/-S	-14.22 ft	Northing:	1,337,828.46 usft	Latitude:	40° 15' 17.021 N
	+E/-W	0.00 ft	Easting:	3,329,198.03 usft	Longitude:	104° 19' 13.789 W
Position Uncertainty		0.00 ft	Wellhead Elevation:	0.00 ft	Ground Level:	4,612.60 ft

<b>Wellbore</b>	OH				
<b>Magnetics</b>	<b>Model Name</b>	<b>Sample Date</b>	<b>Declination (°)</b>	<b>Dip Angle (°)</b>	<b>Field Strength (nT)</b>
	HDGM	9/5/2017	8.27	66.92	52,357

<b>Design</b>	Plan 1			
<b>Audit Notes:</b>				
<b>Version:</b>	<b>Phase:</b>	PLAN	<b>Tie On Depth:</b>	0.00
<b>Vertical Section:</b>	<b>Depth From (TVD) (ft)</b>	<b>+N/-S (ft)</b>	<b>+E/-W (ft)</b>	<b>Direction (°)</b>
	0.00	0.00	0.00	269.898

<b>Plan Sections</b>										
Measured Depth (ft)	Inclination (°)	Azimuth (°)	Vertical Depth (ft)	+N/-S (ft)	+E/-W (ft)	Dogleg Rate (°/100ft)	Build Rate (°/100ft)	Turn Rate (°/100ft)	TFO (°)	Target
0.00	0.00	0.000	0.00	0.00	0.00	0.00	0.00	0.00	0.00	
1,000.00	0.00	0.000	1,000.00	0.00	0.00	0.00	0.00	0.00	0.00	
1,826.17	16.52	81.398	1,814.77	17.69	116.98	2.00	2.00	0.00	81.40	
2,126.78	16.52	81.398	2,102.96	30.48	201.51	0.00	0.00	0.00	0.00	
3,779.13	0.00	0.000	3,732.50	65.87	435.46	1.00	-1.00	0.00	180.00	
5,692.68	0.00	0.000	5,646.05	65.87	435.46	0.00	0.00	0.00	0.00	
6,590.27	89.76	269.898	6,219.00	64.86	-135.09	10.00	10.00	-10.04	269.90	
16,335.68	89.76	269.898	6,260.00	47.52	-9,880.39	0.00	0.00	0.00	0.00	3-62-4-2532CS PBHL

<b>Database:</b>	Casper District	<b>Local Co-ordinate Reference:</b>	Well Anschutz Equus Farm 3-62-4-2532CS
<b>Company:</b>	Bill Barrett Corp.	<b>TVD Reference:</b>	GL 4612.6' & KB 20' @ 4632.60ft
<b>Project:</b>	Weld County, CO NAD 83	<b>MD Reference:</b>	GL 4612.6' & KB 20' @ 4632.60ft
<b>Site:</b>	Anschutz Equus Farms 3-62-4_5 CE2 Pad	<b>North Reference:</b>	True
<b>Well:</b>	Anschutz Equus Farm 3-62-4-2532CS	<b>Survey Calculation Method:</b>	Minimum Curvature
<b>Wellbore:</b>	OH		
<b>Design:</b>	Plan 1		

Planned Survey									
Measured Depth (ft)	Inclination (°)	Azimuth (°)	Vertical Depth (ft)	+N/-S (ft)	+E/-W (ft)	Vertical Section (ft)	Dogleg Rate (°/100ft)	Build Rate (°/100ft)	Turn Rate (°/100ft)
0.00	0.00	0.000	0.00	0.00	0.00	0.00	0.00	0.00	0.00
100.00	0.00	0.000	100.00	0.00	0.00	0.00	0.00	0.00	0.00
200.00	0.00	0.000	200.00	0.00	0.00	0.00	0.00	0.00	0.00
300.00	0.00	0.000	300.00	0.00	0.00	0.00	0.00	0.00	0.00
400.00	0.00	0.000	400.00	0.00	0.00	0.00	0.00	0.00	0.00
500.00	0.00	0.000	500.00	0.00	0.00	0.00	0.00	0.00	0.00
600.00	0.00	0.000	600.00	0.00	0.00	0.00	0.00	0.00	0.00
700.00	0.00	0.000	700.00	0.00	0.00	0.00	0.00	0.00	0.00
800.00	0.00	0.000	800.00	0.00	0.00	0.00	0.00	0.00	0.00
900.00	0.00	0.000	900.00	0.00	0.00	0.00	0.00	0.00	0.00
1,000.00	0.00	0.000	1,000.00	0.00	0.00	0.00	0.00	0.00	0.00
<b>Start Build 2.00</b>									
1,100.00	2.00	81.398	1,099.98	0.26	1.73	-1.73	2.00	2.00	0.00
1,200.00	4.00	81.398	1,199.84	1.04	6.90	-6.90	2.00	2.00	0.00
1,300.00	6.00	81.398	1,299.45	2.35	15.52	-15.52	2.00	2.00	0.00
1,400.00	8.00	81.398	1,398.70	4.17	27.57	-27.57	2.00	2.00	0.00
1,500.00	10.00	81.398	1,497.47	6.51	43.03	-43.04	2.00	2.00	0.00
1,600.00	12.00	81.398	1,595.62	9.36	61.90	-61.91	2.00	2.00	0.00
1,700.00	14.00	81.398	1,693.06	12.73	84.14	-84.16	2.00	2.00	0.00
1,800.00	16.00	81.398	1,789.64	16.60	109.73	-109.76	2.00	2.00	0.00
1,826.17	16.52	81.398	1,814.77	17.69	116.98	-117.01	2.00	2.00	0.00
<b>Start 300.61 hold at 1826.17 MD</b>									
1,900.00	16.52	81.398	1,885.55	20.83	137.74	-137.77	0.00	0.00	0.00
2,000.00	16.52	81.398	1,981.42	25.09	165.86	-165.90	0.00	0.00	0.00
2,100.00	16.52	81.398	2,077.29	29.34	193.98	-194.03	0.00	0.00	0.00
2,126.78	16.52	81.398	2,102.96	30.48	201.51	-201.56	0.00	0.00	0.00
<b>Start Drop -1.00</b>									
2,200.00	15.79	81.398	2,173.29	33.53	221.65	-221.71	1.00	-1.00	0.00
2,300.00	14.79	81.398	2,269.75	37.47	247.73	-247.80	1.00	-1.00	0.00
2,400.00	13.79	81.398	2,366.65	41.16	272.14	-272.21	1.00	-1.00	0.00
2,500.00	12.79	81.398	2,463.97	44.60	294.87	-294.95	1.00	-1.00	0.00
2,600.00	11.79	81.398	2,561.68	47.79	315.92	-316.00	1.00	-1.00	0.00
2,700.00	10.79	81.398	2,659.74	50.72	335.28	-335.37	1.00	-1.00	0.00
2,800.00	9.79	81.398	2,758.13	53.39	352.94	-353.04	1.00	-1.00	0.00
2,900.00	8.79	81.398	2,856.82	55.80	368.90	-369.00	1.00	-1.00	0.00
3,000.00	7.79	81.398	2,955.77	57.96	383.16	-383.26	1.00	-1.00	0.00
3,100.00	6.79	81.398	3,054.96	59.86	395.71	-395.82	1.00	-1.00	0.00
3,200.00	5.79	81.398	3,154.36	61.50	406.55	-406.65	1.00	-1.00	0.00
3,300.00	4.79	81.398	3,253.93	62.88	415.66	-415.78	1.00	-1.00	0.00
3,400.00	3.79	81.398	3,353.65	63.99	423.06	-423.18	1.00	-1.00	0.00
3,500.00	2.79	81.398	3,453.48	64.85	428.74	-428.85	1.00	-1.00	0.00
3,600.00	1.79	81.398	3,553.40	65.45	432.69	-432.81	1.00	-1.00	0.00
3,700.00	0.79	81.398	3,653.38	65.79	434.92	-435.04	1.00	-1.00	0.00
3,779.13	0.00	0.000	3,732.50	65.87	435.46	-435.58	1.00	-1.00	0.00
<b>Start 1913.55 hold at 3779.13 MD</b>									
3,800.00	0.00	0.000	3,753.37	65.87	435.46	-435.58	0.00	0.00	0.00
3,900.00	0.00	0.000	3,853.37	65.87	435.46	-435.58	0.00	0.00	0.00
4,000.00	0.00	0.000	3,953.37	65.87	435.46	-435.58	0.00	0.00	0.00
4,100.00	0.00	0.000	4,053.37	65.87	435.46	-435.58	0.00	0.00	0.00
4,200.00	0.00	0.000	4,153.37	65.87	435.46	-435.58	0.00	0.00	0.00
4,300.00	0.00	0.000	4,253.37	65.87	435.46	-435.58	0.00	0.00	0.00
4,400.00	0.00	0.000	4,353.37	65.87	435.46	-435.58	0.00	0.00	0.00
4,500.00	0.00	0.000	4,453.37	65.87	435.46	-435.58	0.00	0.00	0.00
4,600.00	0.00	0.000	4,553.37	65.87	435.46	-435.58	0.00	0.00	0.00

<b>Database:</b>	Casper District	<b>Local Co-ordinate Reference:</b>	Well Anschutz Equus Farm 3-62-4-2532CS
<b>Company:</b>	Bill Barrett Corp.	<b>TVD Reference:</b>	GL 4612.6' & KB 20' @ 4632.60ft
<b>Project:</b>	Weld County, CO NAD 83	<b>MD Reference:</b>	GL 4612.6' & KB 20' @ 4632.60ft
<b>Site:</b>	Anschutz Equus Farms 3-62-4_5 CE2 Pad	<b>North Reference:</b>	True
<b>Well:</b>	Anschutz Equus Farm 3-62-4-2532CS	<b>Survey Calculation Method:</b>	Minimum Curvature
<b>Wellbore:</b>	OH		
<b>Design:</b>	Plan 1		

Planned Survey									
Measured Depth (ft)	Inclination (°)	Azimuth (°)	Vertical Depth (ft)	+N/-S (ft)	+E/-W (ft)	Vertical Section (ft)	Dogleg Rate (°/100ft)	Build Rate (°/100ft)	Turn Rate (°/100ft)
4,700.00	0.00	0.000	4,653.37	65.87	435.46	-435.58	0.00	0.00	0.00
4,800.00	0.00	0.000	4,753.37	65.87	435.46	-435.58	0.00	0.00	0.00
4,900.00	0.00	0.000	4,853.37	65.87	435.46	-435.58	0.00	0.00	0.00
5,000.00	0.00	0.000	4,953.37	65.87	435.46	-435.58	0.00	0.00	0.00
5,100.00	0.00	0.000	5,053.37	65.87	435.46	-435.58	0.00	0.00	0.00
5,200.00	0.00	0.000	5,153.37	65.87	435.46	-435.58	0.00	0.00	0.00
5,300.00	0.00	0.000	5,253.37	65.87	435.46	-435.58	0.00	0.00	0.00
5,400.00	0.00	0.000	5,353.37	65.87	435.46	-435.58	0.00	0.00	0.00
5,500.00	0.00	0.000	5,453.37	65.87	435.46	-435.58	0.00	0.00	0.00
5,600.00	0.00	0.000	5,553.37	65.87	435.46	-435.58	0.00	0.00	0.00
5,692.68	0.00	0.000	5,646.05	65.87	435.46	-435.58	0.00	0.00	0.00
<b>Start DLS 10.00 TFO 269.90</b>									
5,700.00	0.73	269.898	5,653.37	65.87	435.41	-435.53	10.00	10.00	0.00
5,800.00	10.73	269.898	5,752.75	65.85	425.44	-425.55	10.00	10.00	0.00
5,900.00	20.73	269.898	5,848.88	65.80	398.36	-398.47	10.00	10.00	0.00
6,000.00	30.73	269.898	5,938.85	65.73	355.00	-355.11	10.00	10.00	0.00
6,100.00	40.73	269.898	6,019.92	65.62	296.67	-296.79	10.00	10.00	0.00
6,200.00	50.73	269.898	6,089.63	65.50	225.15	-225.27	10.00	10.00	0.00
6,300.00	60.73	269.898	6,145.87	65.35	142.62	-142.73	10.00	10.00	0.00
6,400.00	70.73	269.898	6,186.91	65.19	51.57	-51.68	10.00	10.00	0.00
6,500.00	80.73	269.898	6,211.53	65.01	-45.22	45.11	10.00	10.00	0.00
6,590.27	89.76	269.898	6,219.00	64.86	-135.09	134.97	10.00	10.00	0.00
<b>Start 9745.41 hold at 6590.27 MD</b>									
6,600.00	89.76	269.898	6,219.04	64.84	-144.82	144.70	0.00	0.00	0.00
6,700.00	89.76	269.898	6,219.46	64.66	-244.82	244.70	0.00	0.00	0.00
6,800.00	89.76	269.898	6,219.89	64.48	-344.82	344.70	0.00	0.00	0.00
6,900.00	89.76	269.898	6,220.31	64.30	-444.82	444.70	0.00	0.00	0.00
7,000.00	89.76	269.898	6,220.73	64.13	-544.82	544.70	0.00	0.00	0.00
7,100.00	89.76	269.898	6,221.15	63.95	-644.81	644.70	0.00	0.00	0.00
7,200.00	89.76	269.898	6,221.57	63.77	-744.81	744.70	0.00	0.00	0.00
7,300.00	89.76	269.898	6,221.99	63.59	-844.81	844.70	0.00	0.00	0.00
7,400.00	89.76	269.898	6,222.41	63.41	-944.81	944.70	0.00	0.00	0.00
7,500.00	89.76	269.898	6,222.83	63.24	-1,044.81	1,044.70	0.00	0.00	0.00
7,600.00	89.76	269.898	6,223.25	63.06	-1,144.81	1,144.70	0.00	0.00	0.00
7,700.00	89.76	269.898	6,223.67	62.88	-1,244.81	1,244.69	0.00	0.00	0.00
7,800.00	89.76	269.898	6,224.09	62.70	-1,344.81	1,344.69	0.00	0.00	0.00
7,900.00	89.76	269.898	6,224.51	62.53	-1,444.81	1,444.69	0.00	0.00	0.00
8,000.00	89.76	269.898	6,224.93	62.35	-1,544.81	1,544.69	0.00	0.00	0.00
8,100.00	89.76	269.898	6,225.35	62.17	-1,644.80	1,644.69	0.00	0.00	0.00
8,200.00	89.76	269.898	6,225.77	61.99	-1,744.80	1,744.69	0.00	0.00	0.00
8,300.00	89.76	269.898	6,226.20	61.81	-1,844.80	1,844.69	0.00	0.00	0.00
8,400.00	89.76	269.898	6,226.62	61.64	-1,944.80	1,944.69	0.00	0.00	0.00
8,500.00	89.76	269.898	6,227.04	61.46	-2,044.80	2,044.69	0.00	0.00	0.00
8,600.00	89.76	269.898	6,227.46	61.28	-2,144.80	2,144.69	0.00	0.00	0.00
8,700.00	89.76	269.898	6,227.88	61.10	-2,244.80	2,244.69	0.00	0.00	0.00
8,800.00	89.76	269.898	6,228.30	60.92	-2,344.80	2,344.68	0.00	0.00	0.00
8,900.00	89.76	269.898	6,228.72	60.75	-2,444.80	2,444.68	0.00	0.00	0.00
9,000.00	89.76	269.898	6,229.14	60.57	-2,544.79	2,544.68	0.00	0.00	0.00
9,100.00	89.76	269.898	6,229.56	60.39	-2,644.79	2,644.68	0.00	0.00	0.00
9,200.00	89.76	269.898	6,229.98	60.21	-2,744.79	2,744.68	0.00	0.00	0.00
9,300.00	89.76	269.898	6,230.40	60.04	-2,844.79	2,844.68	0.00	0.00	0.00
9,400.00	89.76	269.898	6,230.82	59.86	-2,944.79	2,944.68	0.00	0.00	0.00
9,500.00	89.76	269.898	6,231.24	59.68	-3,044.79	3,044.68	0.00	0.00	0.00

<b>Database:</b>	Casper District	<b>Local Co-ordinate Reference:</b>	Well Anschutz Equus Farm 3-62-4-2532CS
<b>Company:</b>	Bill Barrett Corp.	<b>TVD Reference:</b>	GL 4612.6' & KB 20' @ 4632.60ft
<b>Project:</b>	Weld County, CO NAD 83	<b>MD Reference:</b>	GL 4612.6' & KB 20' @ 4632.60ft
<b>Site:</b>	Anschutz Equus Farms 3-62-4_5 CE2 Pad	<b>North Reference:</b>	True
<b>Well:</b>	Anschutz Equus Farm 3-62-4-2532CS	<b>Survey Calculation Method:</b>	Minimum Curvature
<b>Wellbore:</b>	OH		
<b>Design:</b>	Plan 1		

Planned Survey									
Measured Depth (ft)	Inclination (°)	Azimuth (°)	Vertical Depth (ft)	+N/-S (ft)	+E/-W (ft)	Vertical Section (ft)	Dogleg Rate (°/100ft)	Build Rate (°/100ft)	Turn Rate (°/100ft)
9,600.00	89.76	269.898	6,231.66	59.50	-3,144.79	3,144.68	0.00	0.00	0.00
9,700.00	89.76	269.898	6,232.08	59.32	-3,244.79	3,244.68	0.00	0.00	0.00
9,800.00	89.76	269.898	6,232.51	59.15	-3,344.79	3,344.68	0.00	0.00	0.00
9,900.00	89.76	269.898	6,232.93	58.97	-3,444.79	3,444.67	0.00	0.00	0.00
10,000.00	89.76	269.898	6,233.35	58.79	-3,544.78	3,544.67	0.00	0.00	0.00
10,100.00	89.76	269.898	6,233.77	58.61	-3,644.78	3,644.67	0.00	0.00	0.00
10,200.00	89.76	269.898	6,234.19	58.43	-3,744.78	3,744.67	0.00	0.00	0.00
10,300.00	89.76	269.898	6,234.61	58.26	-3,844.78	3,844.67	0.00	0.00	0.00
10,400.00	89.76	269.898	6,235.03	58.08	-3,944.78	3,944.67	0.00	0.00	0.00
10,500.00	89.76	269.898	6,235.45	57.90	-4,044.78	4,044.67	0.00	0.00	0.00
10,600.00	89.76	269.898	6,235.87	57.72	-4,144.78	4,144.67	0.00	0.00	0.00
10,700.00	89.76	269.898	6,236.29	57.54	-4,244.78	4,244.67	0.00	0.00	0.00
10,800.00	89.76	269.898	6,236.71	57.37	-4,344.78	4,344.67	0.00	0.00	0.00
10,900.00	89.76	269.898	6,237.13	57.19	-4,444.77	4,444.67	0.00	0.00	0.00
11,000.00	89.76	269.898	6,237.55	57.01	-4,544.77	4,544.67	0.00	0.00	0.00
11,100.00	89.76	269.898	6,237.97	56.83	-4,644.77	4,644.66	0.00	0.00	0.00
11,200.00	89.76	269.898	6,238.40	56.66	-4,744.77	4,744.66	0.00	0.00	0.00
11,300.00	89.76	269.898	6,238.82	56.48	-4,844.77	4,844.66	0.00	0.00	0.00
11,400.00	89.76	269.898	6,239.24	56.30	-4,944.77	4,944.66	0.00	0.00	0.00
11,500.00	89.76	269.898	6,239.66	56.12	-5,044.77	5,044.66	0.00	0.00	0.00
11,600.00	89.76	269.898	6,240.08	55.94	-5,144.77	5,144.66	0.00	0.00	0.00
11,700.00	89.76	269.898	6,240.50	55.77	-5,244.77	5,244.66	0.00	0.00	0.00
11,800.00	89.76	269.898	6,240.92	55.59	-5,344.77	5,344.66	0.00	0.00	0.00
11,900.00	89.76	269.898	6,241.34	55.41	-5,444.76	5,444.66	0.00	0.00	0.00
12,000.00	89.76	269.898	6,241.76	55.23	-5,544.76	5,544.66	0.00	0.00	0.00
12,100.00	89.76	269.898	6,242.18	55.05	-5,644.76	5,644.66	0.00	0.00	0.00
12,200.00	89.76	269.898	6,242.60	54.88	-5,744.76	5,744.65	0.00	0.00	0.00
12,300.00	89.76	269.898	6,243.02	54.70	-5,844.76	5,844.65	0.00	0.00	0.00
12,400.00	89.76	269.898	6,243.44	54.52	-5,944.76	5,944.65	0.00	0.00	0.00
12,500.00	89.76	269.898	6,243.86	54.34	-6,044.76	6,044.65	0.00	0.00	0.00
12,600.00	89.76	269.898	6,244.28	54.17	-6,144.76	6,144.65	0.00	0.00	0.00
12,700.00	89.76	269.898	6,244.71	53.99	-6,244.76	6,244.65	0.00	0.00	0.00
12,800.00	89.76	269.898	6,245.13	53.81	-6,344.76	6,344.65	0.00	0.00	0.00
12,900.00	89.76	269.898	6,245.55	53.63	-6,444.75	6,444.65	0.00	0.00	0.00
13,000.00	89.76	269.898	6,245.97	53.45	-6,544.75	6,544.65	0.00	0.00	0.00
13,100.00	89.76	269.898	6,246.39	53.28	-6,644.75	6,644.65	0.00	0.00	0.00
13,200.00	89.76	269.898	6,246.81	53.10	-6,744.75	6,744.65	0.00	0.00	0.00
13,300.00	89.76	269.898	6,247.23	52.92	-6,844.75	6,844.64	0.00	0.00	0.00
13,400.00	89.76	269.898	6,247.65	52.74	-6,944.75	6,944.64	0.00	0.00	0.00
13,500.00	89.76	269.898	6,248.07	52.56	-7,044.75	7,044.64	0.00	0.00	0.00
13,600.00	89.76	269.898	6,248.49	52.39	-7,144.75	7,144.64	0.00	0.00	0.00
13,700.00	89.76	269.898	6,248.91	52.21	-7,244.75	7,244.64	0.00	0.00	0.00
13,800.00	89.76	269.898	6,249.33	52.03	-7,344.74	7,344.64	0.00	0.00	0.00
13,900.00	89.76	269.898	6,249.75	51.85	-7,444.74	7,444.64	0.00	0.00	0.00
14,000.00	89.76	269.898	6,250.17	51.68	-7,544.74	7,544.64	0.00	0.00	0.00
14,100.00	89.76	269.898	6,250.60	51.50	-7,644.74	7,644.64	0.00	0.00	0.00
14,200.00	89.76	269.898	6,251.02	51.32	-7,744.74	7,744.64	0.00	0.00	0.00
14,300.00	89.76	269.898	6,251.44	51.14	-7,844.74	7,844.64	0.00	0.00	0.00
14,400.00	89.76	269.898	6,251.86	50.96	-7,944.74	7,944.64	0.00	0.00	0.00
14,500.00	89.76	269.898	6,252.28	50.79	-8,044.74	8,044.63	0.00	0.00	0.00
14,600.00	89.76	269.898	6,252.70	50.61	-8,144.74	8,144.63	0.00	0.00	0.00
14,700.00	89.76	269.898	6,253.12	50.43	-8,244.74	8,244.63	0.00	0.00	0.00
14,800.00	89.76	269.898	6,253.54	50.25	-8,344.73	8,344.63	0.00	0.00	0.00
14,900.00	89.76	269.898	6,253.96	50.07	-8,444.73	8,444.63	0.00	0.00	0.00

<b>Database:</b>	Casper District	<b>Local Co-ordinate Reference:</b>	Well Anschutz Equus Farm 3-62-4-2532CS
<b>Company:</b>	Bill Barrett Corp.	<b>TVD Reference:</b>	GL 4612.6' & KB 20' @ 4632.60ft
<b>Project:</b>	Weld County, CO NAD 83	<b>MD Reference:</b>	GL 4612.6' & KB 20' @ 4632.60ft
<b>Site:</b>	Anschutz Equus Farms 3-62-4_5 CE2 Pad	<b>North Reference:</b>	True
<b>Well:</b>	Anschutz Equus Farm 3-62-4-2532CS	<b>Survey Calculation Method:</b>	Minimum Curvature
<b>Wellbore:</b>	OH		
<b>Design:</b>	Plan 1		

Planned Survey										
Measured Depth (ft)	Inclination (°)	Azimuth (°)	Vertical Depth (ft)	+N/-S (ft)	+E/-W (ft)	Vertical Section (ft)	Dogleg Rate (°/100ft)	Build Rate (°/100ft)	Turn Rate (°/100ft)	
15,000.00	89.76	269.898	6,254.38	49.90	-8,544.73	8,544.63	0.00	0.00	0.00	
15,100.00	89.76	269.898	6,254.80	49.72	-8,644.73	8,644.63	0.00	0.00	0.00	
15,200.00	89.76	269.898	6,255.22	49.54	-8,744.73	8,744.63	0.00	0.00	0.00	
15,300.00	89.76	269.898	6,255.64	49.36	-8,844.73	8,844.63	0.00	0.00	0.00	
15,400.00	89.76	269.898	6,256.06	49.18	-8,944.73	8,944.63	0.00	0.00	0.00	
15,500.00	89.76	269.898	6,256.48	49.01	-9,044.73	9,044.63	0.00	0.00	0.00	
15,600.00	89.76	269.898	6,256.91	48.83	-9,144.73	9,144.62	0.00	0.00	0.00	
15,700.00	89.76	269.898	6,257.33	48.65	-9,244.72	9,244.62	0.00	0.00	0.00	
15,800.00	89.76	269.898	6,257.75	48.47	-9,344.72	9,344.62	0.00	0.00	0.00	
15,900.00	89.76	269.898	6,258.17	48.30	-9,444.72	9,444.62	0.00	0.00	0.00	
16,000.00	89.76	269.898	6,258.59	48.12	-9,544.72	9,544.62	0.00	0.00	0.00	
16,100.00	89.76	269.898	6,259.01	47.94	-9,644.72	9,644.62	0.00	0.00	0.00	
16,200.00	89.76	269.898	6,259.43	47.76	-9,744.72	9,744.62	0.00	0.00	0.00	
16,300.00	89.76	269.898	6,259.85	47.58	-9,844.72	9,844.62	0.00	0.00	0.00	
16,335.68	89.76	269.898	6,260.00	47.52	-9,880.39	9,880.29	0.00	0.00	0.00	
TD at 16335.68										

Design Targets										
Target Name	Dip Angle (°)	Dip Dir. (°)	TVD (ft)	+N/-S (ft)	+E/-W (ft)	Northing (usft)	Easting (usft)	Latitude	Longitude	
3-62-4-2532CS LP	0.00	0.000	6,219.00	64.86	-135.09	1,337,891.52	3,329,062.09	40° 15' 17.662 N	104° 19' 15.532 W	
- hit/miss target										
- Shape										
- plan hits target center										
- Point										
3-62-4-2532CS PBHL	0.00	0.000	6,260.00	47.52	-9,880.39	1,337,744.56	3,319,317.89	40° 15' 17.471 N	104° 21' 21.229 W	
- plan hits target center										
- Point										

Plan Annotations					
Measured Depth (ft)	Vertical Depth (ft)	Local Coordinates			
		+N/-S (ft)	+E/-W (ft)	Comment	
1,000.00	1,000.00	0.00	0.00	Start Build 2.00	
1,826.17	1,814.77	17.69	116.98	Start 300.61 hold at 1826.17 MD	
2,126.78	2,102.96	30.48	201.51	Start Drop -1.00	
3,779.13	3,732.50	65.87	435.46	Start 1913.55 hold at 3779.13 MD	
5,692.68	5,646.05	65.87	435.46	Start DLS 10.00 TFO 269.90	
6,590.27	6,219.00	64.86	-135.09	Start 9745.41 hold at 6590.27 MD	
16,335.68	6,260.00	47.52	-9,880.39	TD at 16335.68	