

PROJECT DETAILS: Weld County, CO NAD 83

Geodetic System: US State Plane 1983
Datum: North American Datum 1983
Ellipsoid: GRS 1980
Zone: Colorado Northern Zone
System Datum: Mean Sea Level
Local North: True

Project: Weld County, CO NAD 83
Site: Anschutz Equus Farms 3-62-4_5 CE2 Pad
Well: Anschutz Equus Farm 3-62-4-4033C
Wellbore: OH
Design: Plan 1



Azimuths to True North
Magnetic North: 8.27°



Magnetic Field
Strength: 52357.0snT
Dip Angle: 66.92°
Date: 9/6/2017
Model: HDGM

Plan: Plan 1 (Anschutz Equus Farm 3-62-4-4033C/OH)

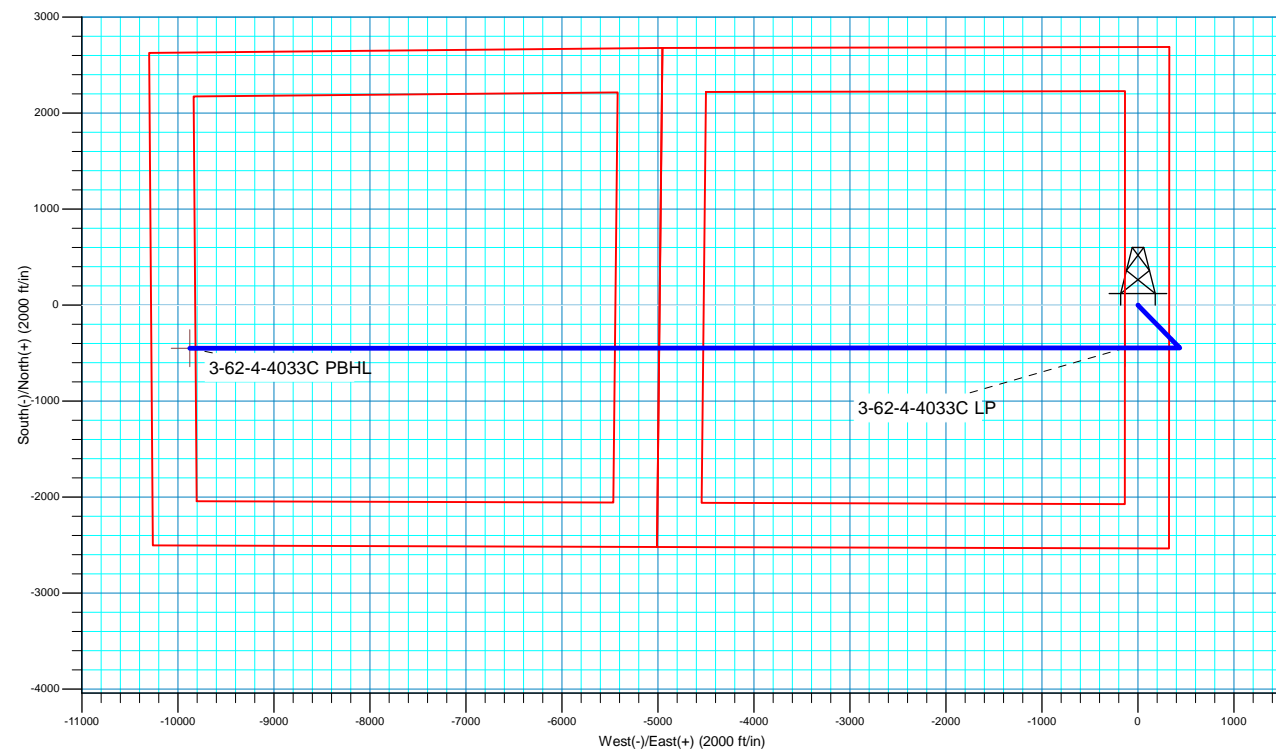
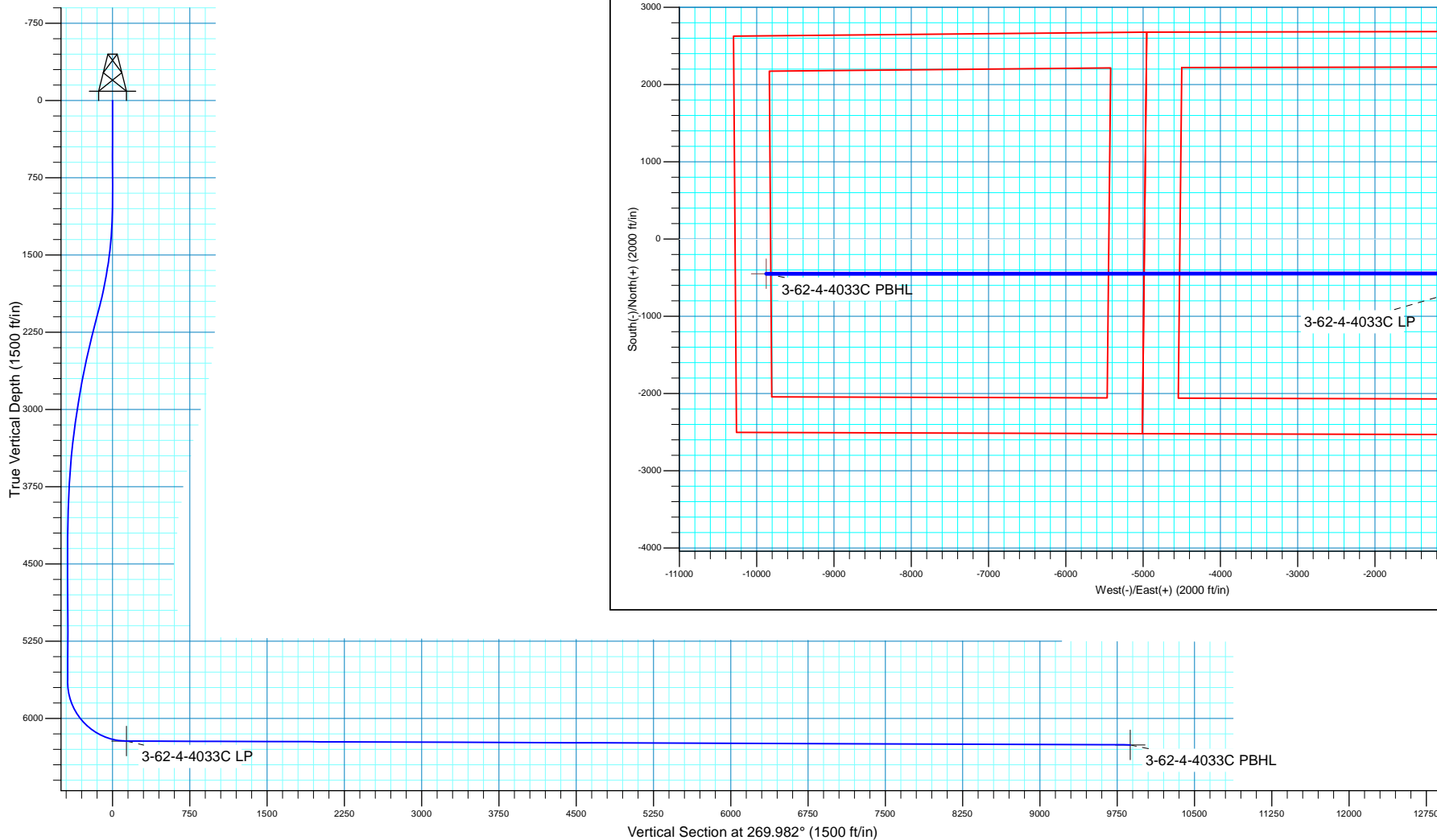
Created By: Seth Burstad Date: 9-06-2017

SECTION DETAILS

MD	Inc	Azi	TVD	+N/-S	+E/-W	Dleg	TFace	VSect
0.00	0.00	0.000	0.00	0.00	0.00	0.00	0.00	0.00
1000.00	0.00	0.000	1000.00	0.00	0.00	0.00	0.00	0.00
2001.97	20.04	135.711	1981.67	-124.16	121.11	2.00	135.71	-121.07
2302.03	20.04	135.711	2263.56	-197.76	192.91	0.00	0.00	-192.85
4305.98	0.00	0.000	4226.90	-446.07	435.13	1.00	180.00	-434.99
5725.13	0.00	0.000	5646.05	-446.07	435.13	0.00	0.00	-434.99
6622.95	89.78	269.982	6219.00	-446.25	-135.65	10.00	269.98	135.79
16364.06	89.78	269.982	6256.00	-449.36	-9876.69	0.00	0.00	9876.83

WELL DETAILS: Anschutz Equus Farm 3-62-4-4033C

+N/-S	+E/-W	GL 4612.6' & KB 20' @ 4632.60ft	4612.60	Longitude
Northing	Easting	Latitude		
0.00	0.00	1337813.16	3329198.23	40° 15' 16.869 N 104° 19' 13.789 W





Bill Barrett Corporation

Bill Barrett Corp.

Weld County, CO NAD 83

Anschutz Equus Farms 3-62-4_5 CE2 Pad

Anschutz Equus Farm 3-62-4-4033C

OH

Plan: Plan 1

Standard Planning Report

06 September, 2017



Scientific Drilling

www.scientificdrilling.com



Database:	Casper District	Local Co-ordinate Reference:	Well Anschutz Equus Farm 3-62-4-4033C
Company:	Bill Barrett Corp.	TVD Reference:	GL 4612.6' & KB 20' @ 4632.60ft
Project:	Weld County, CO NAD 83	MD Reference:	GL 4612.6' & KB 20' @ 4632.60ft
Site:	Anschutz Equus Farms 3-62-4_5 CE2 Pad	North Reference:	True
Well:	Anschutz Equus Farm 3-62-4-4033C	Survey Calculation Method:	Minimum Curvature
Wellbore:	OH		
Design:	Plan 1		

Project	Weld County, CO NAD 83		
Map System:	US State Plane 1983	System Datum:	Mean Sea Level
Geo Datum:	North American Datum 1983		
Map Zone:	Colorado Northern Zone		

Site	Anschutz Equus Farms 3-62-4_5 CE2 Pad, Site Center : Anschutz Equus Farm 3-62-4-2532CN			
Site Position:		Northing:	1,337,842.68 usft	Latitude: 40° 15' 17.161 N
From:	Lat/Long	Easting:	3,329,197.84 usft	Longitude: 104° 19' 13.789 W
Position Uncertainty:	0.00 ft	Slot Radius:	13.200 in	Grid Convergence: 0.76 °

Well	Anschutz Equus Farm 3-62-4-4033C, 2535' FSL 325' FEL Sec 4 T3N R62W			
Well Position	+N/-S	-29.52 ft	Northing:	1,337,813.16 usft
	+E/-W	0.00 ft	Easting:	3,329,198.23 usft
Position Uncertainty		0.00 ft	Wellhead Elevation:	0.00 ft
			Ground Level:	4,612.60 ft

Wellbore	OH				
Magnetics	Model Name	Sample Date	Declination (°)	Dip Angle (°)	Field Strength (nT)
	HDGM	9/6/2017	8.27	66.92	52,357

Design	Plan 1			
Audit Notes:				
Version:	Phase:	PLAN	Tie On Depth:	0.00
Vertical Section:	Depth From (TVD) (ft)	+N/-S (ft)	+E/-W (ft)	Direction (°)
	0.00	0.00	0.00	269.982

Plan Sections										
Measured Depth (ft)	Inclination (°)	Azimuth (°)	Vertical Depth (ft)	+N/-S (ft)	+E/-W (ft)	Dogleg Rate (°/100ft)	Build Rate (°/100ft)	Turn Rate (°/100ft)	TFO (°)	Target
0.00	0.00	0.000	0.00	0.00	0.00	0.00	0.00	0.00	0.00	
1,000.00	0.00	0.000	1,000.00	0.00	0.00	0.00	0.00	0.00	0.00	
2,001.97	20.04	135.711	1,981.67	-124.16	121.11	2.00	2.00	0.00	135.71	
2,302.03	20.04	135.711	2,263.56	-197.76	192.91	0.00	0.00	0.00	0.00	
4,305.98	0.00	0.000	4,226.90	-446.07	435.13	1.00	-1.00	0.00	180.00	
5,725.13	0.00	0.000	5,646.05	-446.07	435.13	0.00	0.00	0.00	0.00	
6,622.95	89.78	269.982	6,219.00	-446.25	-135.65	10.00	10.00	-10.03	269.98	
16,364.06	89.78	269.982	6,256.00	-449.37	-9,876.69	0.00	0.00	0.00	0.00	3-62-4-4033C PBHL

Database:	Casper District	Local Co-ordinate Reference:	Well Anschutz Equus Farm 3-62-4-4033C
Company:	Bill Barrett Corp.	TVD Reference:	GL 4612.6' & KB 20' @ 4632.60ft
Project:	Weld County, CO NAD 83	MD Reference:	GL 4612.6' & KB 20' @ 4632.60ft
Site:	Anschutz Equus Farms 3-62-4_5 CE2 Pad	North Reference:	True
Well:	Anschutz Equus Farm 3-62-4-4033C	Survey Calculation Method:	Minimum Curvature
Wellbore:	OH		
Design:	Plan 1		

Planned Survey									
Measured Depth (ft)	Inclination (°)	Azimuth (°)	Vertical Depth (ft)	+N/-S (ft)	+E/-W (ft)	Vertical Section (ft)	Dogleg Rate (°/100ft)	Build Rate (°/100ft)	Turn Rate (°/100ft)
0.00	0.00	0.000	0.00	0.00	0.00	0.00	0.00	0.00	0.00
100.00	0.00	0.000	100.00	0.00	0.00	0.00	0.00	0.00	0.00
200.00	0.00	0.000	200.00	0.00	0.00	0.00	0.00	0.00	0.00
300.00	0.00	0.000	300.00	0.00	0.00	0.00	0.00	0.00	0.00
400.00	0.00	0.000	400.00	0.00	0.00	0.00	0.00	0.00	0.00
500.00	0.00	0.000	500.00	0.00	0.00	0.00	0.00	0.00	0.00
600.00	0.00	0.000	600.00	0.00	0.00	0.00	0.00	0.00	0.00
700.00	0.00	0.000	700.00	0.00	0.00	0.00	0.00	0.00	0.00
800.00	0.00	0.000	800.00	0.00	0.00	0.00	0.00	0.00	0.00
900.00	0.00	0.000	900.00	0.00	0.00	0.00	0.00	0.00	0.00
1,000.00	0.00	0.000	1,000.00	0.00	0.00	0.00	0.00	0.00	0.00
Start Build 2.00									
1,100.00	2.00	135.711	1,099.98	-1.25	1.22	-1.22	2.00	2.00	0.00
1,200.00	4.00	135.711	1,199.84	-5.00	4.87	-4.87	2.00	2.00	0.00
1,300.00	6.00	135.711	1,299.45	-11.23	10.96	-10.95	2.00	2.00	0.00
1,400.00	8.00	135.711	1,398.70	-19.96	19.47	-19.46	2.00	2.00	0.00
1,500.00	10.00	135.711	1,497.47	-31.15	30.39	-30.38	2.00	2.00	0.00
1,600.00	12.00	135.711	1,595.62	-44.81	43.71	-43.70	2.00	2.00	0.00
1,700.00	14.00	135.711	1,693.06	-60.91	59.42	-59.40	2.00	2.00	0.00
1,800.00	16.00	135.711	1,789.64	-79.44	77.49	-77.47	2.00	2.00	0.00
1,900.00	18.00	135.711	1,885.27	-100.37	97.91	-97.88	2.00	2.00	0.00
2,000.00	20.00	135.711	1,979.82	-123.67	120.64	-120.60	2.00	2.00	0.00
2,001.97	20.04	135.711	1,981.67	-124.16	121.11	-121.07	2.00	2.00	0.00
Start 300.05 hold at 2001.97 MD									
2,100.00	20.04	135.711	2,073.76	-148.20	144.57	-144.52	0.00	0.00	0.00
2,200.00	20.04	135.711	2,167.71	-172.73	168.49	-168.44	0.00	0.00	0.00
2,300.00	20.04	135.711	2,261.65	-197.26	192.42	-192.36	0.00	0.00	0.00
2,302.03	20.04	135.711	2,263.56	-197.76	192.91	-192.85	0.00	0.00	0.00
Start Drop -1.00									
2,400.00	19.06	135.711	2,355.88	-221.22	215.80	-215.73	1.00	-1.00	0.00
2,500.00	18.06	135.711	2,450.68	-244.01	238.02	-237.95	1.00	-1.00	0.00
2,600.00	17.06	135.711	2,546.02	-265.60	259.09	-259.01	1.00	-1.00	0.00
2,700.00	16.06	135.711	2,641.87	-286.01	278.99	-278.90	1.00	-1.00	0.00
2,800.00	15.06	135.711	2,738.20	-305.21	297.72	-297.63	1.00	-1.00	0.00
2,900.00	14.06	135.711	2,834.99	-323.20	315.28	-315.18	1.00	-1.00	0.00
3,000.00	13.06	135.711	2,932.20	-339.99	331.65	-331.54	1.00	-1.00	0.00
3,100.00	12.06	135.711	3,029.81	-355.55	346.83	-346.72	1.00	-1.00	0.00
3,200.00	11.06	135.711	3,127.78	-369.90	360.83	-360.71	1.00	-1.00	0.00
3,300.00	10.06	135.711	3,226.08	-383.02	373.62	-373.50	1.00	-1.00	0.00
3,400.00	9.06	135.711	3,324.69	-394.90	385.22	-385.09	1.00	-1.00	0.00
3,500.00	8.06	135.711	3,423.58	-405.56	395.61	-395.48	1.00	-1.00	0.00
3,600.00	7.06	135.711	3,522.71	-414.98	404.80	-404.67	1.00	-1.00	0.00
3,700.00	6.06	135.711	3,622.05	-423.15	412.77	-412.64	1.00	-1.00	0.00
3,800.00	5.06	135.711	3,721.58	-430.09	419.54	-419.40	1.00	-1.00	0.00
3,900.00	4.06	135.711	3,821.26	-435.78	425.09	-424.95	1.00	-1.00	0.00
4,000.00	3.06	135.711	3,921.07	-440.22	429.43	-429.29	1.00	-1.00	0.00
4,100.00	2.06	135.711	4,020.97	-443.42	432.54	-432.41	1.00	-1.00	0.00
4,200.00	1.06	135.711	4,120.93	-445.37	434.45	-434.31	1.00	-1.00	0.00
4,300.00	0.06	135.711	4,220.92	-446.07	435.13	-434.99	1.00	-1.00	0.00
4,305.98	0.00	0.000	4,226.90	-446.07	435.13	-434.99	1.00	-1.00	0.00
Start 1419.15 hold at 4305.98 MD									
4,400.00	0.00	0.000	4,320.92	-446.07	435.13	-434.99	0.00	0.00	0.00
4,500.00	0.00	0.000	4,420.92	-446.07	435.13	-434.99	0.00	0.00	0.00
4,600.00	0.00	0.000	4,520.92	-446.07	435.13	-434.99	0.00	0.00	0.00

Database:	Casper District	Local Co-ordinate Reference:	Well Anschutz Equus Farm 3-62-4-4033C
Company:	Bill Barrett Corp.	TVD Reference:	GL 4612.6' & KB 20' @ 4632.60ft
Project:	Weld County, CO NAD 83	MD Reference:	GL 4612.6' & KB 20' @ 4632.60ft
Site:	Anschutz Equus Farms 3-62-4_5 CE2 Pad	North Reference:	True
Well:	Anschutz Equus Farm 3-62-4-4033C	Survey Calculation Method:	Minimum Curvature
Wellbore:	OH		
Design:	Plan 1		

Planned Survey									
Measured Depth (ft)	Inclination (°)	Azimuth (°)	Vertical Depth (ft)	+N/-S (ft)	+E/-W (ft)	Vertical Section (ft)	Dogleg Rate (°/100ft)	Build Rate (°/100ft)	Turn Rate (°/100ft)
4,700.00	0.00	0.000	4,620.92	-446.07	435.13	-434.99	0.00	0.00	0.00
4,800.00	0.00	0.000	4,720.92	-446.07	435.13	-434.99	0.00	0.00	0.00
4,900.00	0.00	0.000	4,820.92	-446.07	435.13	-434.99	0.00	0.00	0.00
5,000.00	0.00	0.000	4,920.92	-446.07	435.13	-434.99	0.00	0.00	0.00
5,100.00	0.00	0.000	5,020.92	-446.07	435.13	-434.99	0.00	0.00	0.00
5,200.00	0.00	0.000	5,120.92	-446.07	435.13	-434.99	0.00	0.00	0.00
5,300.00	0.00	0.000	5,220.92	-446.07	435.13	-434.99	0.00	0.00	0.00
5,400.00	0.00	0.000	5,320.92	-446.07	435.13	-434.99	0.00	0.00	0.00
5,500.00	0.00	0.000	5,420.92	-446.07	435.13	-434.99	0.00	0.00	0.00
5,600.00	0.00	0.000	5,520.92	-446.07	435.13	-434.99	0.00	0.00	0.00
5,700.00	0.00	0.000	5,620.92	-446.07	435.13	-434.99	0.00	0.00	0.00
5,725.13	0.00	0.000	5,646.05	-446.07	435.13	-434.99	0.00	0.00	0.00
Start DLS 10.00 TFO 269.98									
5,800.00	7.49	269.982	5,720.71	-446.07	430.24	-430.10	10.00	10.00	0.00
5,900.00	17.49	269.982	5,818.22	-446.08	408.65	-408.51	10.00	10.00	0.00
6,000.00	27.49	269.982	5,910.50	-446.09	370.45	-370.31	10.00	10.00	0.00
6,100.00	37.49	269.982	5,994.74	-446.11	316.81	-316.67	10.00	10.00	0.00
6,200.00	47.49	269.982	6,068.39	-446.13	249.35	-249.21	10.00	10.00	0.00
6,300.00	57.49	269.982	6,129.21	-446.15	170.13	-169.99	10.00	10.00	0.00
6,400.00	67.49	269.982	6,175.35	-446.18	81.55	-81.41	10.00	10.00	0.00
6,500.00	77.49	269.982	6,205.40	-446.21	-13.69	13.83	10.00	10.00	0.00
6,600.00	87.49	269.982	6,218.46	-446.25	-112.71	112.85	10.00	10.00	0.00
6,622.95	89.78	269.982	6,219.00	-446.25	-135.65	135.79	10.00	10.00	0.00
Start 9741.11 hold at 6622.95 MD									
6,700.00	89.78	269.982	6,219.30	-446.28	-212.70	212.84	0.00	0.00	0.00
6,800.00	89.78	269.982	6,219.68	-446.31	-312.70	312.84	0.00	0.00	0.00
6,900.00	89.78	269.982	6,220.06	-446.34	-412.70	412.84	0.00	0.00	0.00
7,000.00	89.78	269.982	6,220.44	-446.37	-512.70	512.84	0.00	0.00	0.00
7,100.00	89.78	269.982	6,220.82	-446.41	-612.70	612.84	0.00	0.00	0.00
7,200.00	89.78	269.982	6,221.20	-446.44	-712.70	712.84	0.00	0.00	0.00
7,300.00	89.78	269.982	6,221.58	-446.47	-812.70	812.84	0.00	0.00	0.00
7,400.00	89.78	269.982	6,221.95	-446.50	-912.69	912.83	0.00	0.00	0.00
7,500.00	89.78	269.982	6,222.33	-446.53	-1,012.69	1,012.83	0.00	0.00	0.00
7,600.00	89.78	269.982	6,222.71	-446.57	-1,112.69	1,112.83	0.00	0.00	0.00
7,700.00	89.78	269.982	6,223.09	-446.60	-1,212.69	1,212.83	0.00	0.00	0.00
7,800.00	89.78	269.982	6,223.47	-446.63	-1,312.69	1,312.83	0.00	0.00	0.00
7,900.00	89.78	269.982	6,223.85	-446.66	-1,412.69	1,412.83	0.00	0.00	0.00
8,000.00	89.78	269.982	6,224.23	-446.69	-1,512.69	1,512.83	0.00	0.00	0.00
8,100.00	89.78	269.982	6,224.61	-446.73	-1,612.69	1,612.83	0.00	0.00	0.00
8,200.00	89.78	269.982	6,224.99	-446.76	-1,712.69	1,712.83	0.00	0.00	0.00
8,300.00	89.78	269.982	6,225.37	-446.79	-1,812.69	1,812.83	0.00	0.00	0.00
8,400.00	89.78	269.982	6,225.75	-446.82	-1,912.69	1,912.83	0.00	0.00	0.00
8,500.00	89.78	269.982	6,226.13	-446.85	-2,012.69	2,012.83	0.00	0.00	0.00
8,600.00	89.78	269.982	6,226.51	-446.89	-2,112.69	2,112.83	0.00	0.00	0.00
8,700.00	89.78	269.982	6,226.89	-446.92	-2,212.69	2,212.83	0.00	0.00	0.00
8,800.00	89.78	269.982	6,227.27	-446.95	-2,312.68	2,312.82	0.00	0.00	0.00
8,900.00	89.78	269.982	6,227.65	-446.98	-2,412.68	2,412.82	0.00	0.00	0.00
9,000.00	89.78	269.982	6,228.03	-447.01	-2,512.68	2,512.82	0.00	0.00	0.00
9,100.00	89.78	269.982	6,228.41	-447.04	-2,612.68	2,612.82	0.00	0.00	0.00
9,200.00	89.78	269.982	6,228.79	-447.08	-2,712.68	2,712.82	0.00	0.00	0.00
9,300.00	89.78	269.982	6,229.17	-447.11	-2,812.68	2,812.82	0.00	0.00	0.00
9,400.00	89.78	269.982	6,229.55	-447.14	-2,912.68	2,912.82	0.00	0.00	0.00
9,500.00	89.78	269.982	6,229.93	-447.17	-3,012.68	3,012.82	0.00	0.00	0.00

Database:	Casper District	Local Co-ordinate Reference:	Well Anschutz Equus Farm 3-62-4-4033C
Company:	Bill Barrett Corp.	TVD Reference:	GL 4612.6' & KB 20' @ 4632.60ft
Project:	Weld County, CO NAD 83	MD Reference:	GL 4612.6' & KB 20' @ 4632.60ft
Site:	Anschutz Equus Farms 3-62-4_5 CE2 Pad	North Reference:	True
Well:	Anschutz Equus Farm 3-62-4-4033C	Survey Calculation Method:	Minimum Curvature
Wellbore:	OH		
Design:	Plan 1		

Planned Survey									
Measured Depth (ft)	Inclination (°)	Azimuth (°)	Vertical Depth (ft)	+N/-S (ft)	+E/-W (ft)	Vertical Section (ft)	Dogleg Rate (°/100ft)	Build Rate (°/100ft)	Turn Rate (°/100ft)
9,600.00	89.78	269.982	6,230.31	-447.20	-3,112.68	3,112.82	0.00	0.00	0.00
9,700.00	89.78	269.982	6,230.69	-447.24	-3,212.68	3,212.82	0.00	0.00	0.00
9,800.00	89.78	269.982	6,231.07	-447.27	-3,312.68	3,312.82	0.00	0.00	0.00
9,900.00	89.78	269.982	6,231.45	-447.30	-3,412.68	3,412.82	0.00	0.00	0.00
10,000.00	89.78	269.982	6,231.83	-447.33	-3,512.68	3,512.82	0.00	0.00	0.00
10,100.00	89.78	269.982	6,232.21	-447.36	-3,612.67	3,612.82	0.00	0.00	0.00
10,200.00	89.78	269.982	6,232.59	-447.40	-3,712.67	3,712.81	0.00	0.00	0.00
10,300.00	89.78	269.982	6,232.97	-447.43	-3,812.67	3,812.81	0.00	0.00	0.00
10,400.00	89.78	269.982	6,233.35	-447.46	-3,912.67	3,912.81	0.00	0.00	0.00
10,500.00	89.78	269.982	6,233.73	-447.49	-4,012.67	4,012.81	0.00	0.00	0.00
10,600.00	89.78	269.982	6,234.11	-447.52	-4,112.67	4,112.81	0.00	0.00	0.00
10,700.00	89.78	269.982	6,234.49	-447.56	-4,212.67	4,212.81	0.00	0.00	0.00
10,800.00	89.78	269.982	6,234.87	-447.59	-4,312.67	4,312.81	0.00	0.00	0.00
10,900.00	89.78	269.982	6,235.25	-447.62	-4,412.67	4,412.81	0.00	0.00	0.00
11,000.00	89.78	269.982	6,235.63	-447.65	-4,512.67	4,512.81	0.00	0.00	0.00
11,100.00	89.78	269.982	6,236.01	-447.68	-4,612.67	4,612.81	0.00	0.00	0.00
11,200.00	89.78	269.982	6,236.39	-447.72	-4,712.67	4,712.81	0.00	0.00	0.00
11,300.00	89.78	269.982	6,236.77	-447.75	-4,812.67	4,812.81	0.00	0.00	0.00
11,400.00	89.78	269.982	6,237.15	-447.78	-4,912.67	4,912.81	0.00	0.00	0.00
11,500.00	89.78	269.982	6,237.53	-447.81	-5,012.66	5,012.81	0.00	0.00	0.00
11,600.00	89.78	269.982	6,237.91	-447.84	-5,112.66	5,112.80	0.00	0.00	0.00
11,700.00	89.78	269.982	6,238.29	-447.88	-5,212.66	5,212.80	0.00	0.00	0.00
11,800.00	89.78	269.982	6,238.67	-447.91	-5,312.66	5,312.80	0.00	0.00	0.00
11,900.00	89.78	269.982	6,239.05	-447.94	-5,412.66	5,412.80	0.00	0.00	0.00
12,000.00	89.78	269.982	6,239.43	-447.97	-5,512.66	5,512.80	0.00	0.00	0.00
12,100.00	89.78	269.982	6,239.81	-448.00	-5,612.66	5,612.80	0.00	0.00	0.00
12,200.00	89.78	269.982	6,240.19	-448.04	-5,712.66	5,712.80	0.00	0.00	0.00
12,300.00	89.78	269.982	6,240.56	-448.07	-5,812.66	5,812.80	0.00	0.00	0.00
12,400.00	89.78	269.982	6,240.94	-448.10	-5,912.66	5,912.80	0.00	0.00	0.00
12,500.00	89.78	269.982	6,241.32	-448.13	-6,012.66	6,012.80	0.00	0.00	0.00
12,600.00	89.78	269.982	6,241.70	-448.16	-6,112.66	6,112.80	0.00	0.00	0.00
12,700.00	89.78	269.982	6,242.08	-448.20	-6,212.66	6,212.80	0.00	0.00	0.00
12,800.00	89.78	269.982	6,242.46	-448.23	-6,312.66	6,312.80	0.00	0.00	0.00
12,900.00	89.78	269.982	6,242.84	-448.26	-6,412.65	6,412.80	0.00	0.00	0.00
13,000.00	89.78	269.982	6,243.22	-448.29	-6,512.65	6,512.79	0.00	0.00	0.00
13,100.00	89.78	269.982	6,243.60	-448.32	-6,612.65	6,612.79	0.00	0.00	0.00
13,200.00	89.78	269.982	6,243.98	-448.36	-6,712.65	6,712.79	0.00	0.00	0.00
13,300.00	89.78	269.982	6,244.36	-448.39	-6,812.65	6,812.79	0.00	0.00	0.00
13,400.00	89.78	269.982	6,244.74	-448.42	-6,912.65	6,912.79	0.00	0.00	0.00
13,500.00	89.78	269.982	6,245.12	-448.45	-7,012.65	7,012.79	0.00	0.00	0.00
13,600.00	89.78	269.982	6,245.50	-448.48	-7,112.65	7,112.79	0.00	0.00	0.00
13,700.00	89.78	269.982	6,245.88	-448.52	-7,212.65	7,212.79	0.00	0.00	0.00
13,800.00	89.78	269.982	6,246.26	-448.55	-7,312.65	7,312.79	0.00	0.00	0.00
13,900.00	89.78	269.982	6,246.64	-448.58	-7,412.65	7,412.79	0.00	0.00	0.00
14,000.00	89.78	269.982	6,247.02	-448.61	-7,512.65	7,512.79	0.00	0.00	0.00
14,100.00	89.78	269.982	6,247.40	-448.64	-7,612.65	7,612.79	0.00	0.00	0.00
14,200.00	89.78	269.982	6,247.78	-448.68	-7,712.65	7,712.79	0.00	0.00	0.00
14,300.00	89.78	269.982	6,248.16	-448.71	-7,812.64	7,812.79	0.00	0.00	0.00
14,400.00	89.78	269.982	6,248.54	-448.74	-7,912.64	7,912.78	0.00	0.00	0.00
14,500.00	89.78	269.982	6,248.92	-448.77	-8,012.64	8,012.78	0.00	0.00	0.00
14,600.00	89.78	269.982	6,249.30	-448.80	-8,112.64	8,112.78	0.00	0.00	0.00
14,700.00	89.78	269.982	6,249.68	-448.84	-8,212.64	8,212.78	0.00	0.00	0.00
14,800.00	89.78	269.982	6,250.06	-448.87	-8,312.64	8,312.78	0.00	0.00	0.00
14,900.00	89.78	269.982	6,250.44	-448.90	-8,412.64	8,412.78	0.00	0.00	0.00

Database:	Casper District	Local Co-ordinate Reference:	Well Anschutz Equus Farm 3-62-4-4033C
Company:	Bill Barrett Corp.	TVD Reference:	GL 4612.6' & KB 20' @ 4632.60ft
Project:	Weld County, CO NAD 83	MD Reference:	GL 4612.6' & KB 20' @ 4632.60ft
Site:	Anschutz Equus Farms 3-62-4_5 CE2 Pad	North Reference:	True
Well:	Anschutz Equus Farm 3-62-4-4033C	Survey Calculation Method:	Minimum Curvature
Wellbore:	OH		
Design:	Plan 1		

Planned Survey										
Measured Depth (ft)	Inclination (°)	Azimuth (°)	Vertical Depth (ft)	+N/-S (ft)	+E/-W (ft)	Vertical Section (ft)	Dogleg Rate (°/100ft)	Build Rate (°/100ft)	Turn Rate (°/100ft)	
15,000.00	89.78	269.982	6,250.82	-448.93	-8,512.64	8,512.78	0.00	0.00	0.00	
15,100.00	89.78	269.982	6,251.20	-448.96	-8,612.64	8,612.78	0.00	0.00	0.00	
15,200.00	89.78	269.982	6,251.58	-449.00	-8,712.64	8,712.78	0.00	0.00	0.00	
15,300.00	89.78	269.982	6,251.96	-449.03	-8,812.64	8,812.78	0.00	0.00	0.00	
15,400.00	89.78	269.982	6,252.34	-449.06	-8,912.64	8,912.78	0.00	0.00	0.00	
15,500.00	89.78	269.982	6,252.72	-449.09	-9,012.64	9,012.78	0.00	0.00	0.00	
15,600.00	89.78	269.982	6,253.10	-449.12	-9,112.64	9,112.78	0.00	0.00	0.00	
15,700.00	89.78	269.982	6,253.48	-449.16	-9,212.63	9,212.77	0.00	0.00	0.00	
15,800.00	89.78	269.982	6,253.86	-449.19	-9,312.63	9,312.77	0.00	0.00	0.00	
15,900.00	89.78	269.982	6,254.24	-449.22	-9,412.63	9,412.77	0.00	0.00	0.00	
16,000.00	89.78	269.982	6,254.62	-449.25	-9,512.63	9,512.77	0.00	0.00	0.00	
16,100.00	89.78	269.982	6,255.00	-449.28	-9,612.63	9,612.77	0.00	0.00	0.00	
16,200.00	89.78	269.982	6,255.38	-449.32	-9,712.63	9,712.77	0.00	0.00	0.00	
16,300.00	89.78	269.982	6,255.76	-449.35	-9,812.63	9,812.77	0.00	0.00	0.00	
16,364.06	89.78	269.982	6,256.00	-449.37	-9,876.69	9,876.83	0.00	0.00	0.00	
TD at 16364.06										

Design Targets										
Target Name	Dip Angle (°)	Dip Dir. (°)	TVD (ft)	+N/-S (ft)	+E/-W (ft)	Northing (usft)	Easting (usft)	Latitude	Longitude	
3-62-4-4033C LP	0.00	0.000	6,219.00	-446.24	-135.65	1,337,365.16	3,329,068.53	40° 15' 12.460 N	104° 19' 15.539 W	
- hit/miss target										
- Shape										
- plan misses target center by 0.01ft at 6622.95ft MD (6219.00 TVD, -446.25 N, -135.65 E)										
- Point										
3-62-4-4033C PBHL	0.00	0.000	6,256.00	-449.37	-9,876.69	1,337,232.47	3,319,328.41	40° 15' 12.409 N	104° 21' 21.179 W	
- plan hits target center										
- Point										

Plan Annotations					
Measured Depth (ft)	Vertical Depth (ft)	Local Coordinates			
		+N/-S (ft)	+E/-W (ft)	Comment	
1,000.00	1,000.00	0.00	0.00	Start Build 2.00	
2,001.97	1,981.67	-124.16	121.11	Start 300.05 hold at 2001.97 MD	
2,302.03	2,263.56	-197.76	192.91	Start Drop -1.00	
4,305.98	4,226.90	-446.07	435.13	Start 1419.15 hold at 4305.98 MD	
5,725.13	5,646.05	-446.07	435.13	Start DLS 10.00 TFO 269.98	
6,622.95	6,219.00	-446.25	-135.65	Start 9741.11 hold at 6622.95 MD	
16,364.06	6,256.00	-449.37	-9,876.69	TD at 16364.06	