

T3N, R62W, 6th P.M.

BILL BARRETT CORPORATION

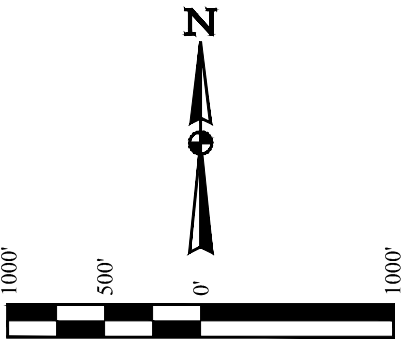
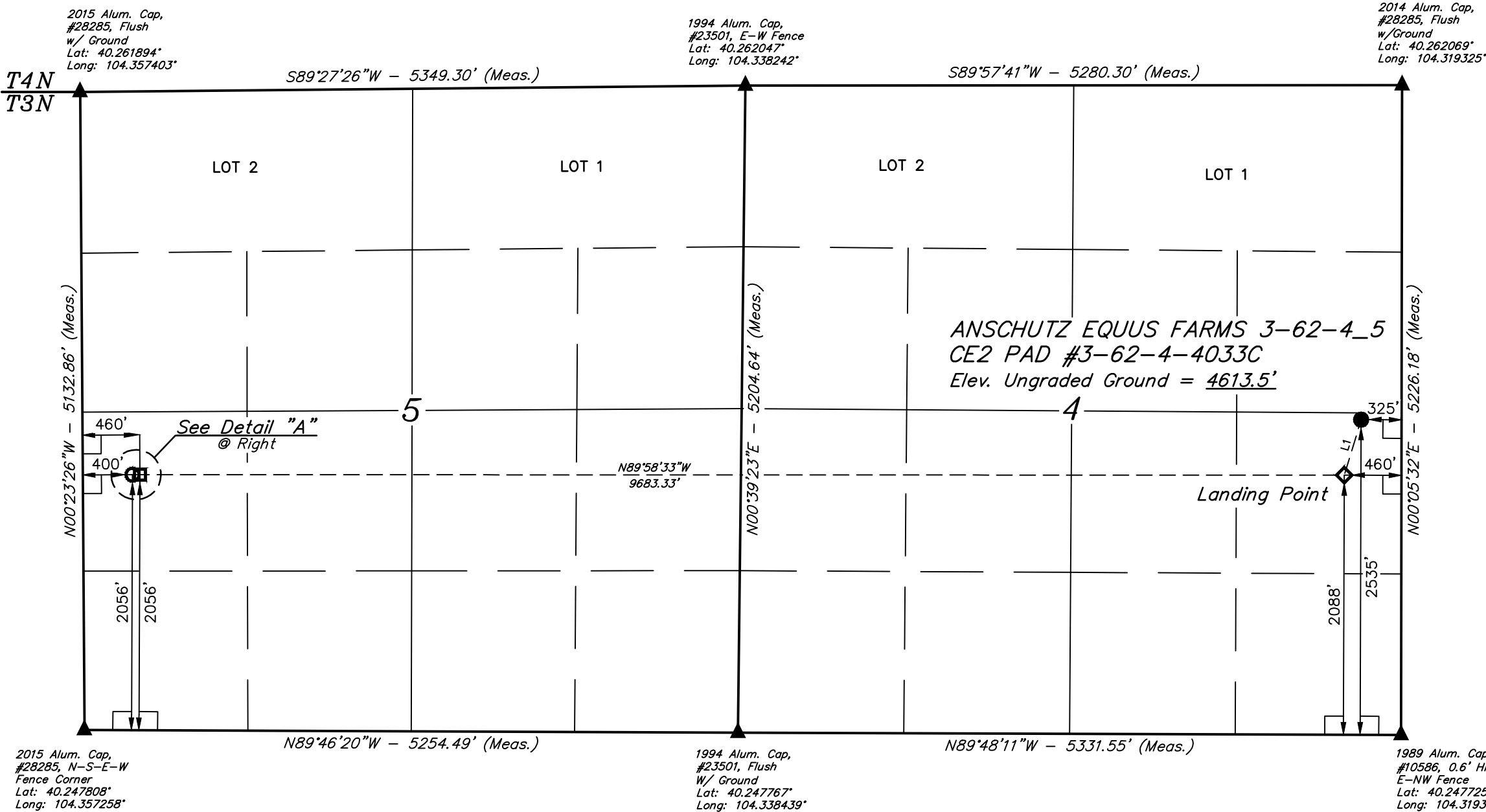
ANSCHUTZ EQUUS FARMS 3-62-4_5 CE2 PAD
#3-62-4-4033C
NE 1/4 SE 1/4, SECTION 4, T3N, R62W, 6th P.M.
WELD COUNTY, COLORADO

BASIS OF BEARINGS

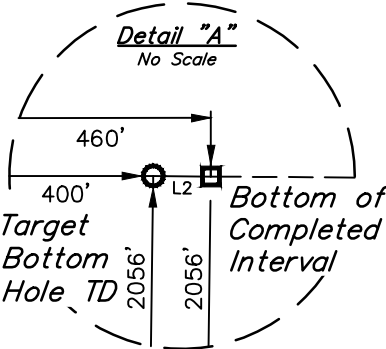
BASIS OF BEARINGS IS A G.P.S. OBSERVATION

BASIS OF ELEVATION

SPOT ELEVATION LOCATED AT THE NORTHEAST CORNER OF SECTION 24, T5N, R62W, 6th P.M. TAKEN FROM THE POINT OF ROCKS, QUADRANGLE, COLORADO, WELD COUNTY, 7.5 MINUTE QUAD (TOPOGRAPHIC MAP) PUBLISHED BY THE UNITED STATES DEPARTMENT OF THE INTERIOR, GEOLOGICAL SURVEY. SAID ELEVATION IS MARKED AS BEING 4530 FEET.



LINE TABLE		
LINE	DIRECTION	LENGTH
L1	S16°54'28"W	466.68'
L2	N89°58'33"W	60.00'



CERTIFICATE

THIS IS TO CERTIFY THAT THE ABOVE PAD WAS PREPARED FROM FIELD NOTES OF ACTUAL SURVEYS MADE BY ME OR UNDER MY SUPERVISION AND THAT THE SAME ARE TRUE AND CORRECT TO THE BEST OF MY KNOWLEDGE AND BELIEF.

REGISTERED LAND SURVEYOR
REGISTRATION NO. 28285
STATE OF COLORADO
JULY 1983 - JULY 2017

PDOP = 1.3

REV: 3 08-23-17 J.J. (LP & BHL CHANGE)

LEGEND:

- └─┘ = 90° SYMBOL
- = PROPOSED WELLHEAD.
- ◆ = LANDING POINT.
- = BOTTOM OF COMPLETED INTERVAL.
- = TARGET BOTTOM HOLE TD.
- ▲ = SECTION CORNERS LOCATED. (NAD 83)

NAD 83 (SURFACE LOCATION)	NAD 83 (LANDING POINT)	NAD 83 (BTM. OF COMPLETED INT.)	NAD 83 (TARGET BOTTOM HOLE)
LATITUDE = 40°15'16.87" (40.254686)	LATITUDE = 40°15'12.46" (40.253461)	LATITUDE = 40°15'12.41" (40.253447)	LATITUDE = 40°15'12.41" (40.253447)
LONGITUDE = 104°19'13.79" (104.320497)	LONGITUDE = 104°19'15.54" (104.320983)	LONGITUDE = 104°21'20.40" (104.355667)	LONGITUDE = 104°21'21.18" (104.355883)
NAD 27 (SURFACE LOCATION)	NAD 27 (LANDING POINT)	NAD 27 (BTM. OF COMPLETED INT.)	NAD 27 (TARGET BOTTOM HOLE)
LATITUDE = 40°15'16.94" (40.254706)	LATITUDE = 40°15'12.53" (40.253481)	LATITUDE = 40°15'12.48" (40.253467)	LATITUDE = 40°15'12.48" (40.253467)
LONGITUDE = 104°19'11.97" (104.319992)	LONGITUDE = 104°19'13.71" (104.320475)	LONGITUDE = 104°21'18.57" (104.355158)	LONGITUDE = 104°21'19.34" (104.355372)
STATE PLANE NAD 83 (CO. NORTH)	STATE PLANE NAD 83 (CO. NORTH)	STATE PLANE NAD 83 (CO. NORTH)	STATE PLANE NAD 83 (CO. NORTH)
N: 1337812.97 E: 3329197.83	N: 1337364.73 E: 3329068.39	N: 1337233.64 E: 3319388.50	N: 1337232.83 E: 3319328.52
STATE PLANE NAD 27 (CO. NORTH)	STATE PLANE NAD 27 (CO. NORTH)	STATE PLANE NAD 27 (CO. NORTH)	STATE PLANE NAD 27 (CO. NORTH)
N: 337815.91 E: 2329348.25	N: 337367.68 E: 2329218.81	N: 337236.50 E: 2319538.92	N: 337235.69 E: 2319478.94



UELS, LLC
Corporate Office * 85 South 200 East
Vernal, UT 84078 * (435) 789-1017

SURVEYED BY	DALLAS NIELSEN, J.C.	11-12-15	SCALE
DRAWN BY	K.B.	01-05-16	1" = 1000'

WELL LOCATION PLAT