

PROJECT DETAILS: Weld County, CO NAD 83

Geodetic System: US State Plane 1983  
Datum: North American Datum 1983  
Ellipsoid: GRS 1980  
Zone: Colorado Northern Zone  
System Datum: Mean Sea Level  
Local North: True

Project: Weld County, CO NAD 83  
Site: Anschutz Equus Farms 3-62-4\_5 NENE Pad  
Well: Anschutz Equus Farm 3-62-4-0801C  
Wellbore: OH  
Design: Plan 1



Azimuths to True North  
Magnetic North: 8.27°



Magnetic Field  
Strength: 52355.5nT  
Dip Angle: 66.93°  
Date: 9/6/2017  
Model: HDGM

Plan: Plan 1 (Anschutz Equus Farm 3-62-4-0801C/OH)

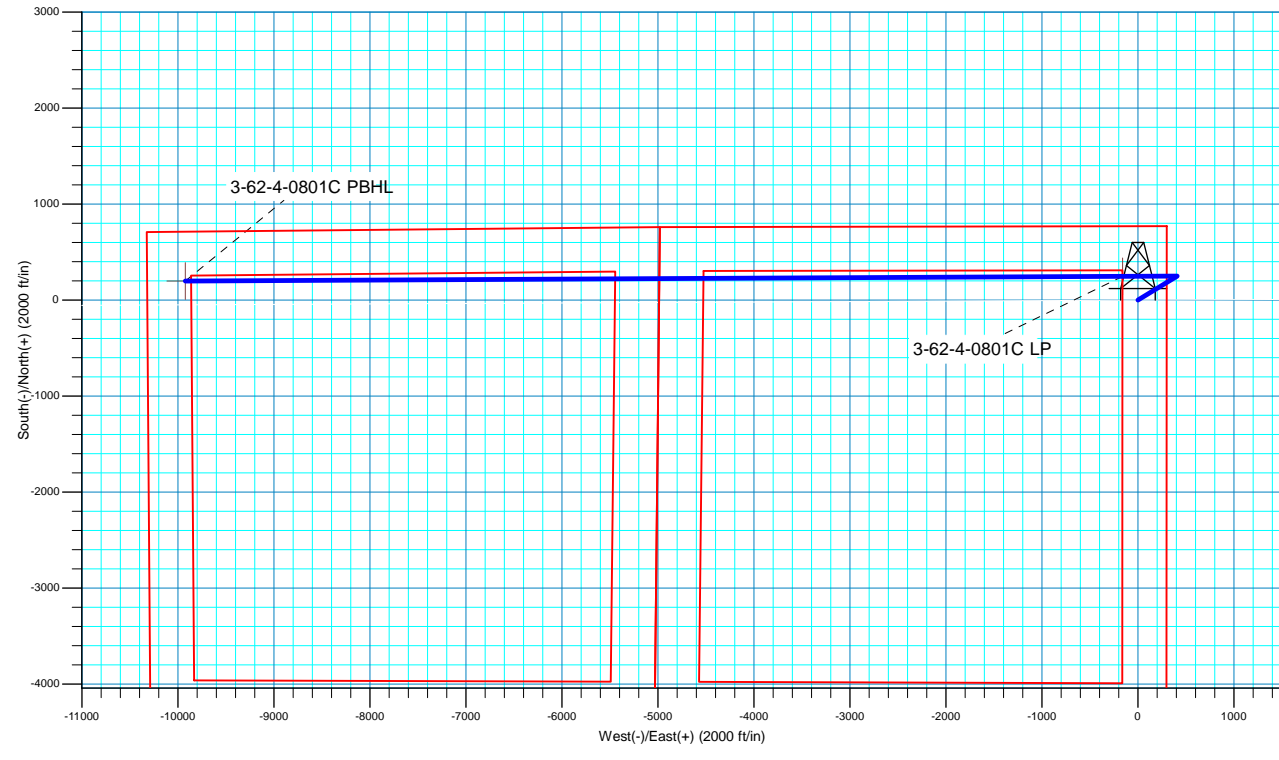
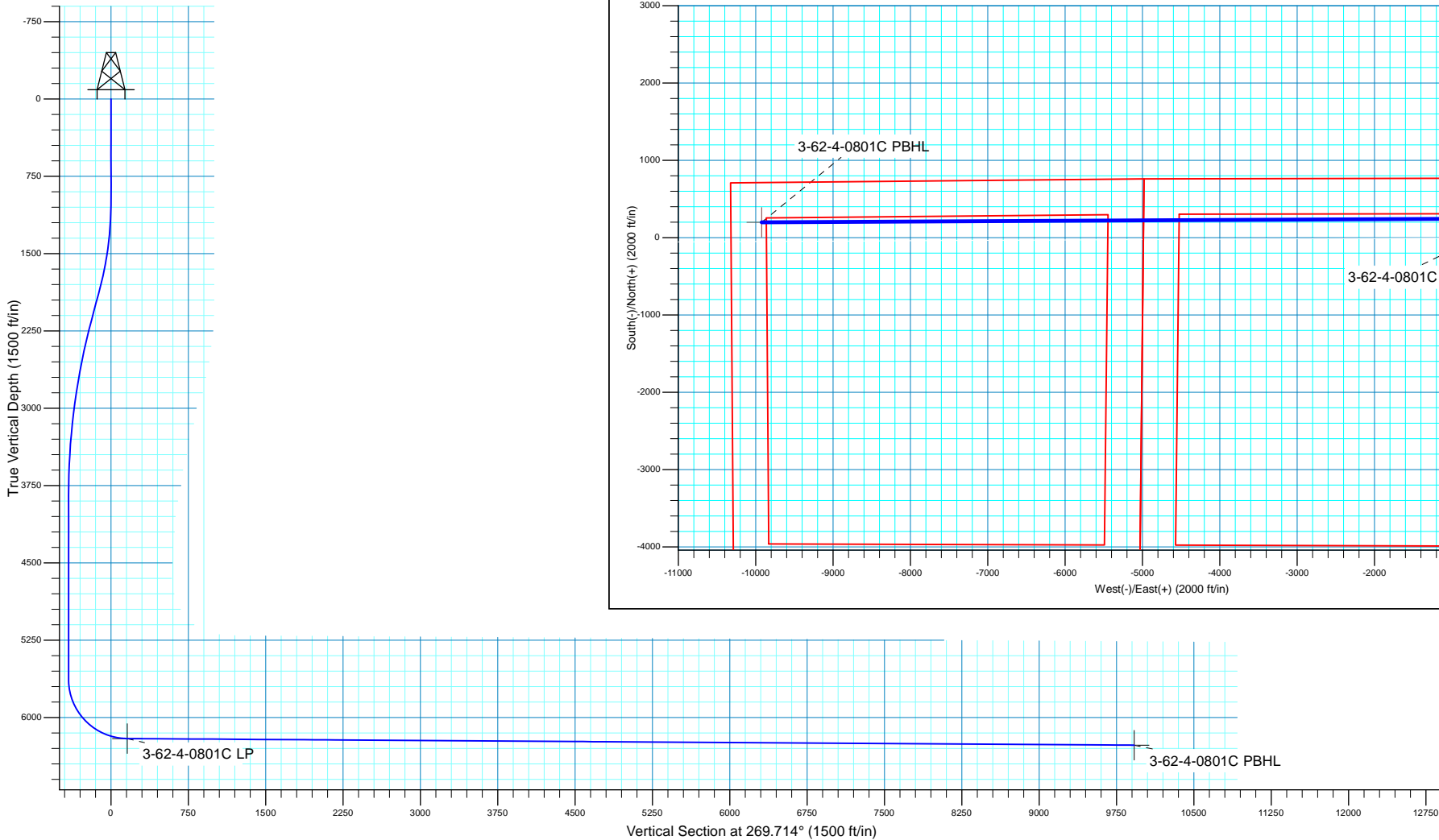
Created By: Seth Burstad Date: 9-06-2017

SECTION DETAILS

MD	Inc	Azi	TVD	+N/-S	+E/-W	Dleg	TFace	VSect
0.00	0.00	0.000	0.00	0.00	0.00	0.00	0.00	0.00
1000.00	0.00	0.000	1000.00	0.00	0.00	0.00	0.00	0.00
1867.06	17.34	58.542	1853.88	67.96	111.08	2.00	58.54	-111.41
2167.24	17.34	58.542	2140.42	114.65	187.40	0.00	0.00	-187.97
3901.37	0.00	0.000	3848.19	250.56	409.55	1.00	180.00	-410.80
5684.23	0.00	0.000	5631.05	250.56	409.55	0.00	0.00	-410.80
6580.47	89.62	269.715	6204.00	247.72	-159.64	10.00	269.71	158.41
16343.43	89.62	269.715	6268.00	199.09	-9922.27	0.00	0.00	9921.16

WELL DETAILS: Anschutz Equus Farm 3-62-4-0801C

		GL 4612.6' & KB 20' @ 4632.60ft			Longitude
+N/-S	+E/-W	Northing	Easting	Latitude	
0.00	0.00	1339732.04	3329198.94	40° 15' 35.831 N	104° 19' 13.451 W





**Bill Barrett Corporation**

## **Bill Barrett Corp.**

**Weld County, CO NAD 83**

**Anschutz Equus Farms 3-62-4\_5 NENE Pad**

**Anschutz Equus Farm 3-62-4-0801C**

**OH**

**Plan: Plan 1**

## **Standard Planning Report**

**06 September, 2017**



**Scientific Drilling**

[www.scientificdrilling.com](http://www.scientificdrilling.com)



<b>Database:</b>	Casper District	<b>Local Co-ordinate Reference:</b>	Well Anschutz Equus Farm 3-62-4-0801C
<b>Company:</b>	Bill Barrett Corp.	<b>TVD Reference:</b>	GL 4612.6' & KB 20' @ 4632.60ft
<b>Project:</b>	Weld County, CO NAD 83	<b>MD Reference:</b>	GL 4612.6' & KB 20' @ 4632.60ft
<b>Site:</b>	Anschutz Equus Farms 3-62-4_5 NENE Pad	<b>North Reference:</b>	True
<b>Well:</b>	Anschutz Equus Farm 3-62-4-0801C	<b>Survey Calculation Method:</b>	Minimum Curvature
<b>Wellbore:</b>	OH		
<b>Design:</b>	Plan 1		

<b>Project</b>	Weld County, CO NAD 83		
<b>Map System:</b>	US State Plane 1983	<b>System Datum:</b>	Mean Sea Level
<b>Geo Datum:</b>	North American Datum 1983		
<b>Map Zone:</b>	Colorado Northern Zone		

<b>Site</b>	Anschutz Equus Farms 3-62-4_5 NENE Pad, Side Center : Anschutz Equus Farm 3-62-4-0801C			
<b>Site Position:</b>		<b>Northing:</b>	1,339,732.05 usft	<b>Latitude:</b> 40° 15' 35.831 N
<b>From:</b>	Lat/Long	<b>Easting:</b>	3,329,198.94 usft	<b>Longitude:</b> 104° 19' 13.451 W
<b>Position Uncertainty:</b>	0.00 ft	<b>Slot Radius:</b>	13.200 in	<b>Grid Convergence:</b> 0.76 °

<b>Well</b>	Anschutz Equus Farm 3-62-4-0801C, 771' FNL 300' FEL Sec 4 T3N R62W			
<b>Well Position</b>	<b>+N/-S</b>	-0.01 ft	<b>Northing:</b>	1,339,732.04 usft
	<b>+E/-W</b>	0.00 ft	<b>Easting:</b>	3,329,198.94 usft
<b>Position Uncertainty</b>		0.00 ft	<b>Wellhead Elevation:</b>	0.00 ft
			<b>Ground Level:</b>	4,612.60 ft

<b>Wellbore</b>	OH				
<b>Magnetics</b>	<b>Model Name</b>	<b>Sample Date</b>	<b>Declination (°)</b>	<b>Dip Angle (°)</b>	<b>Field Strength (nT)</b>
	HDGM	9/6/2017	8.27	66.93	52,356

<b>Design</b>	Plan 1			
<b>Audit Notes:</b>				
<b>Version:</b>	<b>Phase:</b>	PLAN	<b>Tie On Depth:</b>	0.00
<b>Vertical Section:</b>	<b>Depth From (TVD) (ft)</b>	<b>+N/-S (ft)</b>	<b>+E/-W (ft)</b>	<b>Direction (°)</b>
	0.00	0.00	0.00	269.714

<b>Plan Sections</b>										
Measured Depth (ft)	Inclination (°)	Azimuth (°)	Vertical Depth (ft)	+N/-S (ft)	+E/-W (ft)	Dogleg Rate (°/100ft)	Build Rate (°/100ft)	Turn Rate (°/100ft)	TFO (°)	Target
0.00	0.00	0.000	0.00	0.00	0.00	0.00	0.00	0.00	0.00	
1,000.00	0.00	0.000	1,000.00	0.00	0.00	0.00	0.00	0.00	0.00	
1,867.06	17.34	58.542	1,853.88	67.96	111.08	2.00	2.00	0.00	58.54	
2,167.24	17.34	58.542	2,140.42	114.65	187.40	0.00	0.00	0.00	0.00	
3,901.37	0.00	0.000	3,848.19	250.56	409.55	1.00	-1.00	0.00	180.00	
5,684.23	0.00	0.000	5,631.05	250.56	409.55	0.00	0.00	0.00	0.00	
6,580.47	89.62	269.715	6,204.00	247.72	-159.64	10.00	10.00	-10.07	269.71	
16,343.43	89.62	269.715	6,268.00	199.08	-9,922.27	0.00	0.00	0.00	0.00	3-62-4-0801C PBHL

<b>Database:</b>	Casper District	<b>Local Co-ordinate Reference:</b>	Well Anschutz Equus Farm 3-62-4-0801C
<b>Company:</b>	Bill Barrett Corp.	<b>TVD Reference:</b>	GL 4612.6' & KB 20' @ 4632.60ft
<b>Project:</b>	Weld County, CO NAD 83	<b>MD Reference:</b>	GL 4612.6' & KB 20' @ 4632.60ft
<b>Site:</b>	Anschutz Equus Farms 3-62-4_5 NENE Pad	<b>North Reference:</b>	True
<b>Well:</b>	Anschutz Equus Farm 3-62-4-0801C	<b>Survey Calculation Method:</b>	Minimum Curvature
<b>Wellbore:</b>	OH		
<b>Design:</b>	Plan 1		

Planned Survey									
Measured Depth (ft)	Inclination (°)	Azimuth (°)	Vertical Depth (ft)	+N/-S (ft)	+E/-W (ft)	Vertical Section (ft)	Dogleg Rate (°/100ft)	Build Rate (°/100ft)	Turn Rate (°/100ft)
0.00	0.00	0.000	0.00	0.00	0.00	0.00	0.00	0.00	0.00
100.00	0.00	0.000	100.00	0.00	0.00	0.00	0.00	0.00	0.00
200.00	0.00	0.000	200.00	0.00	0.00	0.00	0.00	0.00	0.00
300.00	0.00	0.000	300.00	0.00	0.00	0.00	0.00	0.00	0.00
400.00	0.00	0.000	400.00	0.00	0.00	0.00	0.00	0.00	0.00
500.00	0.00	0.000	500.00	0.00	0.00	0.00	0.00	0.00	0.00
600.00	0.00	0.000	600.00	0.00	0.00	0.00	0.00	0.00	0.00
700.00	0.00	0.000	700.00	0.00	0.00	0.00	0.00	0.00	0.00
800.00	0.00	0.000	800.00	0.00	0.00	0.00	0.00	0.00	0.00
900.00	0.00	0.000	900.00	0.00	0.00	0.00	0.00	0.00	0.00
1,000.00	0.00	0.000	1,000.00	0.00	0.00	0.00	0.00	0.00	0.00
<b>Start Build 2.00</b>									
1,100.00	2.00	58.542	1,099.98	0.91	1.49	-1.49	2.00	2.00	0.00
1,200.00	4.00	58.542	1,199.84	3.64	5.95	-5.97	2.00	2.00	0.00
1,300.00	6.00	58.542	1,299.45	8.19	13.39	-13.43	2.00	2.00	0.00
1,400.00	8.00	58.542	1,398.70	14.55	23.78	-23.85	2.00	2.00	0.00
1,500.00	10.00	58.542	1,497.47	22.71	37.13	-37.24	2.00	2.00	0.00
1,600.00	12.00	58.542	1,595.62	32.67	53.40	-53.56	2.00	2.00	0.00
1,700.00	14.00	58.542	1,693.06	44.41	72.59	-72.81	2.00	2.00	0.00
1,800.00	16.00	58.542	1,789.64	57.92	94.67	-94.95	2.00	2.00	0.00
1,867.06	17.34	58.542	1,853.88	67.96	111.08	-111.41	2.00	2.00	0.00
<b>Start 300.18 hold at 1867.06 MD</b>									
1,900.00	17.34	58.542	1,885.33	73.08	119.45	-119.81	0.00	0.00	0.00
2,000.00	17.34	58.542	1,980.78	88.63	144.88	-145.32	0.00	0.00	0.00
2,100.00	17.34	58.542	2,076.23	104.19	170.30	-170.82	0.00	0.00	0.00
2,167.24	17.34	58.542	2,140.42	114.65	187.40	-187.97	0.00	0.00	0.00
<b>Start Drop -1.00</b>									
2,200.00	17.01	58.542	2,171.72	119.70	195.65	-196.25	1.00	-1.00	0.00
2,300.00	16.01	58.542	2,267.59	134.53	219.90	-220.57	1.00	-1.00	0.00
2,400.00	15.01	58.542	2,363.95	148.49	242.71	-243.45	1.00	-1.00	0.00
2,500.00	14.01	58.542	2,460.75	161.57	264.09	-264.89	1.00	-1.00	0.00
2,600.00	13.01	58.542	2,557.98	173.76	284.02	-284.89	1.00	-1.00	0.00
2,700.00	12.01	58.542	2,655.61	185.07	302.50	-303.42	1.00	-1.00	0.00
2,800.00	11.01	58.542	2,753.59	195.49	319.53	-320.50	1.00	-1.00	0.00
2,900.00	10.01	58.542	2,851.91	205.01	335.10	-336.12	1.00	-1.00	0.00
3,000.00	9.01	58.542	2,950.54	213.64	349.19	-350.26	1.00	-1.00	0.00
3,100.00	8.01	58.542	3,049.43	221.36	361.82	-362.92	1.00	-1.00	0.00
3,200.00	7.01	58.542	3,148.57	228.19	372.98	-374.11	1.00	-1.00	0.00
3,300.00	6.01	58.542	3,247.93	234.11	382.65	-383.82	1.00	-1.00	0.00
3,400.00	5.01	58.542	3,347.46	239.12	390.85	-392.04	1.00	-1.00	0.00
3,500.00	4.01	58.542	3,447.15	243.23	397.56	-398.77	1.00	-1.00	0.00
3,600.00	3.01	58.542	3,546.96	246.42	402.79	-404.02	1.00	-1.00	0.00
3,700.00	2.01	58.542	3,646.87	248.71	406.53	-407.77	1.00	-1.00	0.00
3,800.00	1.01	58.542	3,746.83	250.09	408.79	-410.03	1.00	-1.00	0.00
3,900.00	0.01	58.542	3,846.82	250.56	409.55	-410.80	1.00	-1.00	0.00
3,901.37	0.00	0.000	3,848.19	250.56	409.55	-410.80	1.00	-1.00	0.00
<b>Start 1782.86 hold at 3901.37 MD</b>									
4,000.00	0.00	0.000	3,946.82	250.56	409.55	-410.80	0.00	0.00	0.00
4,100.00	0.00	0.000	4,046.82	250.56	409.55	-410.80	0.00	0.00	0.00
4,200.00	0.00	0.000	4,146.82	250.56	409.55	-410.80	0.00	0.00	0.00
4,300.00	0.00	0.000	4,246.82	250.56	409.55	-410.80	0.00	0.00	0.00
4,400.00	0.00	0.000	4,346.82	250.56	409.55	-410.80	0.00	0.00	0.00
4,500.00	0.00	0.000	4,446.82	250.56	409.55	-410.80	0.00	0.00	0.00
4,600.00	0.00	0.000	4,546.82	250.56	409.55	-410.80	0.00	0.00	0.00

<b>Database:</b>	Casper District	<b>Local Co-ordinate Reference:</b>	Well Anschutz Equus Farm 3-62-4-0801C
<b>Company:</b>	Bill Barrett Corp.	<b>TVD Reference:</b>	GL 4612.6' & KB 20' @ 4632.60ft
<b>Project:</b>	Weld County, CO NAD 83	<b>MD Reference:</b>	GL 4612.6' & KB 20' @ 4632.60ft
<b>Site:</b>	Anschutz Equus Farms 3-62-4_5 NENE Pad	<b>North Reference:</b>	True
<b>Well:</b>	Anschutz Equus Farm 3-62-4-0801C	<b>Survey Calculation Method:</b>	Minimum Curvature
<b>Wellbore:</b>	OH		
<b>Design:</b>	Plan 1		

Planned Survey									
Measured Depth (ft)	Inclination (°)	Azimuth (°)	Vertical Depth (ft)	+N/-S (ft)	+E/-W (ft)	Vertical Section (ft)	Dogleg Rate (°/100ft)	Build Rate (°/100ft)	Turn Rate (°/100ft)
4,700.00	0.00	0.000	4,646.82	250.56	409.55	-410.80	0.00	0.00	0.00
4,800.00	0.00	0.000	4,746.82	250.56	409.55	-410.80	0.00	0.00	0.00
4,900.00	0.00	0.000	4,846.82	250.56	409.55	-410.80	0.00	0.00	0.00
5,000.00	0.00	0.000	4,946.82	250.56	409.55	-410.80	0.00	0.00	0.00
5,100.00	0.00	0.000	5,046.82	250.56	409.55	-410.80	0.00	0.00	0.00
5,200.00	0.00	0.000	5,146.82	250.56	409.55	-410.80	0.00	0.00	0.00
5,300.00	0.00	0.000	5,246.82	250.56	409.55	-410.80	0.00	0.00	0.00
5,400.00	0.00	0.000	5,346.82	250.56	409.55	-410.80	0.00	0.00	0.00
5,500.00	0.00	0.000	5,446.82	250.56	409.55	-410.80	0.00	0.00	0.00
5,600.00	0.00	0.000	5,546.82	250.56	409.55	-410.80	0.00	0.00	0.00
5,684.23	0.00	0.000	5,631.05	250.56	409.55	-410.80	0.00	0.00	0.00
<b>Start DLS 10.00 TFO 269.71</b>									
5,700.00	1.58	269.715	5,646.82	250.56	409.33	-410.58	10.00	10.00	0.00
5,800.00	11.58	269.715	5,746.04	250.50	397.89	-399.14	10.00	10.00	0.00
5,900.00	21.58	269.715	5,841.76	250.36	369.40	-370.64	10.00	10.00	0.00
6,000.00	31.58	269.715	5,931.08	250.14	324.72	-325.96	10.00	10.00	0.00
6,100.00	41.58	269.715	6,011.28	249.84	265.20	-266.44	10.00	10.00	0.00
6,200.00	51.58	269.715	6,079.93	249.48	192.66	-193.91	10.00	10.00	0.00
6,300.00	61.58	269.715	6,134.94	249.06	109.31	-110.55	10.00	10.00	0.00
6,400.00	71.58	269.715	6,174.64	248.61	17.67	-18.91	10.00	10.00	0.00
6,500.00	81.58	269.715	6,197.83	248.12	-79.48	78.24	10.00	10.00	0.00
6,580.47	89.62	269.715	6,204.00	247.72	-159.64	158.41	10.00	10.00	0.00
<b>Start 9762.96 hold at 6580.47 MD</b>									
6,600.00	89.62	269.715	6,204.12	247.63	-179.17	177.94	0.00	0.00	0.00
6,700.00	89.62	269.715	6,204.78	247.13	-279.17	277.93	0.00	0.00	0.00
6,800.00	89.62	269.715	6,205.43	246.63	-379.17	377.93	0.00	0.00	0.00
6,900.00	89.62	269.715	6,206.09	246.13	-479.16	477.93	0.00	0.00	0.00
7,000.00	89.62	269.715	6,206.75	245.63	-579.16	577.93	0.00	0.00	0.00
7,100.00	89.62	269.715	6,207.40	245.14	-679.16	677.93	0.00	0.00	0.00
7,200.00	89.62	269.715	6,208.06	244.64	-779.15	777.92	0.00	0.00	0.00
7,300.00	89.62	269.715	6,208.71	244.14	-879.15	877.92	0.00	0.00	0.00
7,400.00	89.62	269.715	6,209.37	243.64	-979.15	977.92	0.00	0.00	0.00
7,500.00	89.62	269.715	6,210.02	243.14	-1,079.14	1,077.92	0.00	0.00	0.00
7,600.00	89.62	269.715	6,210.68	242.64	-1,179.14	1,177.91	0.00	0.00	0.00
7,700.00	89.62	269.715	6,211.34	242.15	-1,279.14	1,277.91	0.00	0.00	0.00
7,800.00	89.62	269.715	6,211.99	241.65	-1,379.13	1,377.91	0.00	0.00	0.00
7,900.00	89.62	269.715	6,212.65	241.15	-1,479.13	1,477.91	0.00	0.00	0.00
8,000.00	89.62	269.715	6,213.30	240.65	-1,579.13	1,577.91	0.00	0.00	0.00
8,100.00	89.62	269.715	6,213.96	240.15	-1,679.12	1,677.90	0.00	0.00	0.00
8,200.00	89.62	269.715	6,214.61	239.65	-1,779.12	1,777.90	0.00	0.00	0.00
8,300.00	89.62	269.715	6,215.27	239.16	-1,879.12	1,877.90	0.00	0.00	0.00
8,400.00	89.62	269.715	6,215.92	238.66	-1,979.11	1,977.90	0.00	0.00	0.00
8,500.00	89.62	269.715	6,216.58	238.16	-2,079.11	2,077.90	0.00	0.00	0.00
8,600.00	89.62	269.715	6,217.24	237.66	-2,179.11	2,177.89	0.00	0.00	0.00
8,700.00	89.62	269.715	6,217.89	237.16	-2,279.10	2,277.89	0.00	0.00	0.00
8,800.00	89.62	269.715	6,218.55	236.67	-2,379.10	2,377.89	0.00	0.00	0.00
8,900.00	89.62	269.715	6,219.20	236.17	-2,479.10	2,477.89	0.00	0.00	0.00
9,000.00	89.62	269.715	6,219.86	235.67	-2,579.09	2,577.88	0.00	0.00	0.00
9,100.00	89.62	269.715	6,220.51	235.17	-2,679.09	2,677.88	0.00	0.00	0.00
9,200.00	89.62	269.715	6,221.17	234.67	-2,779.09	2,777.88	0.00	0.00	0.00
9,300.00	89.62	269.715	6,221.82	234.17	-2,879.08	2,877.88	0.00	0.00	0.00
9,400.00	89.62	269.715	6,222.48	233.68	-2,979.08	2,977.88	0.00	0.00	0.00
9,500.00	89.62	269.715	6,223.14	233.18	-3,079.08	3,077.87	0.00	0.00	0.00

<b>Database:</b>	Casper District	<b>Local Co-ordinate Reference:</b>	Well Anschutz Equus Farm 3-62-4-0801C
<b>Company:</b>	Bill Barrett Corp.	<b>TVD Reference:</b>	GL 4612.6' & KB 20' @ 4632.60ft
<b>Project:</b>	Weld County, CO NAD 83	<b>MD Reference:</b>	GL 4612.6' & KB 20' @ 4632.60ft
<b>Site:</b>	Anschutz Equus Farms 3-62-4_5 NENE Pad	<b>North Reference:</b>	True
<b>Well:</b>	Anschutz Equus Farm 3-62-4-0801C	<b>Survey Calculation Method:</b>	Minimum Curvature
<b>Wellbore:</b>	OH		
<b>Design:</b>	Plan 1		

Planned Survey									
Measured Depth (ft)	Inclination (°)	Azimuth (°)	Vertical Depth (ft)	+N/-S (ft)	+E/-W (ft)	Vertical Section (ft)	Dogleg Rate (°/100ft)	Build Rate (°/100ft)	Turn Rate (°/100ft)
9,600.00	89.62	269.715	6,223.79	232.68	-3,179.07	3,177.87	0.00	0.00	0.00
9,700.00	89.62	269.715	6,224.45	232.18	-3,279.07	3,277.87	0.00	0.00	0.00
9,800.00	89.62	269.715	6,225.10	231.68	-3,379.07	3,377.87	0.00	0.00	0.00
9,900.00	89.62	269.715	6,225.76	231.18	-3,479.06	3,477.86	0.00	0.00	0.00
10,000.00	89.62	269.715	6,226.41	230.69	-3,579.06	3,577.86	0.00	0.00	0.00
10,100.00	89.62	269.715	6,227.07	230.19	-3,679.06	3,677.86	0.00	0.00	0.00
10,200.00	89.62	269.715	6,227.72	229.69	-3,779.05	3,777.86	0.00	0.00	0.00
10,300.00	89.62	269.715	6,228.38	229.19	-3,879.05	3,877.86	0.00	0.00	0.00
10,400.00	89.62	269.715	6,229.04	228.69	-3,979.05	3,977.85	0.00	0.00	0.00
10,500.00	89.62	269.715	6,229.69	228.20	-4,079.04	4,077.85	0.00	0.00	0.00
10,600.00	89.62	269.715	6,230.35	227.70	-4,179.04	4,177.85	0.00	0.00	0.00
10,700.00	89.62	269.715	6,231.00	227.20	-4,279.04	4,277.85	0.00	0.00	0.00
10,800.00	89.62	269.715	6,231.66	226.70	-4,379.03	4,377.85	0.00	0.00	0.00
10,900.00	89.62	269.715	6,232.31	226.20	-4,479.03	4,477.84	0.00	0.00	0.00
11,000.00	89.62	269.715	6,232.97	225.70	-4,579.03	4,577.84	0.00	0.00	0.00
11,100.00	89.62	269.715	6,233.62	225.21	-4,679.02	4,677.84	0.00	0.00	0.00
11,200.00	89.62	269.715	6,234.28	224.71	-4,779.02	4,777.84	0.00	0.00	0.00
11,300.00	89.62	269.715	6,234.94	224.21	-4,879.01	4,877.83	0.00	0.00	0.00
11,400.00	89.62	269.715	6,235.59	223.71	-4,979.01	4,977.83	0.00	0.00	0.00
11,500.00	89.62	269.715	6,236.25	223.21	-5,079.01	5,077.83	0.00	0.00	0.00
11,600.00	89.62	269.715	6,236.90	222.71	-5,179.00	5,177.83	0.00	0.00	0.00
11,700.00	89.62	269.715	6,237.56	222.22	-5,279.00	5,277.83	0.00	0.00	0.00
11,800.00	89.62	269.715	6,238.21	221.72	-5,379.00	5,377.82	0.00	0.00	0.00
11,900.00	89.62	269.715	6,238.87	221.22	-5,478.99	5,477.82	0.00	0.00	0.00
12,000.00	89.62	269.715	6,239.53	220.72	-5,578.99	5,577.82	0.00	0.00	0.00
12,100.00	89.62	269.715	6,240.18	220.22	-5,678.99	5,677.82	0.00	0.00	0.00
12,200.00	89.62	269.715	6,240.84	219.73	-5,778.98	5,777.82	0.00	0.00	0.00
12,300.00	89.62	269.715	6,241.49	219.23	-5,878.98	5,877.81	0.00	0.00	0.00
12,400.00	89.62	269.715	6,242.15	218.73	-5,978.98	5,977.81	0.00	0.00	0.00
12,500.00	89.62	269.715	6,242.80	218.23	-6,078.97	6,077.81	0.00	0.00	0.00
12,600.00	89.62	269.715	6,243.46	217.73	-6,178.97	6,177.81	0.00	0.00	0.00
12,700.00	89.62	269.715	6,244.11	217.23	-6,278.97	6,277.80	0.00	0.00	0.00
12,800.00	89.62	269.715	6,244.77	216.74	-6,378.96	6,377.80	0.00	0.00	0.00
12,900.00	89.62	269.715	6,245.43	216.24	-6,478.96	6,477.80	0.00	0.00	0.00
13,000.00	89.62	269.715	6,246.08	215.74	-6,578.96	6,577.80	0.00	0.00	0.00
13,100.00	89.62	269.715	6,246.74	215.24	-6,678.95	6,677.80	0.00	0.00	0.00
13,200.00	89.62	269.715	6,247.39	214.74	-6,778.95	6,777.79	0.00	0.00	0.00
13,300.00	89.62	269.715	6,248.05	214.24	-6,878.95	6,877.79	0.00	0.00	0.00
13,400.00	89.62	269.715	6,248.70	213.75	-6,978.94	6,977.79	0.00	0.00	0.00
13,500.00	89.62	269.715	6,249.36	213.25	-7,078.94	7,077.79	0.00	0.00	0.00
13,600.00	89.62	269.715	6,250.01	212.75	-7,178.94	7,177.79	0.00	0.00	0.00
13,700.00	89.62	269.715	6,250.67	212.25	-7,278.93	7,277.78	0.00	0.00	0.00
13,800.00	89.62	269.715	6,251.33	211.75	-7,378.93	7,377.78	0.00	0.00	0.00
13,900.00	89.62	269.715	6,251.98	211.26	-7,478.93	7,477.78	0.00	0.00	0.00
14,000.00	89.62	269.715	6,252.64	210.76	-7,578.92	7,577.78	0.00	0.00	0.00
14,100.00	89.62	269.715	6,253.29	210.26	-7,678.92	7,677.77	0.00	0.00	0.00
14,200.00	89.62	269.715	6,253.95	209.76	-7,778.92	7,777.77	0.00	0.00	0.00
14,300.00	89.62	269.715	6,254.60	209.26	-7,878.91	7,877.77	0.00	0.00	0.00
14,400.00	89.62	269.715	6,255.26	208.76	-7,978.91	7,977.77	0.00	0.00	0.00
14,500.00	89.62	269.715	6,255.91	208.27	-8,078.91	8,077.77	0.00	0.00	0.00
14,600.00	89.62	269.715	6,256.57	207.77	-8,178.90	8,177.76	0.00	0.00	0.00
14,700.00	89.62	269.715	6,257.23	207.27	-8,278.90	8,277.76	0.00	0.00	0.00
14,800.00	89.62	269.715	6,257.88	206.77	-8,378.90	8,377.76	0.00	0.00	0.00
14,900.00	89.62	269.715	6,258.54	206.27	-8,478.89	8,477.76	0.00	0.00	0.00

<b>Database:</b>	Casper District	<b>Local Co-ordinate Reference:</b>	Well Anschutz Equus Farm 3-62-4-0801C
<b>Company:</b>	Bill Barrett Corp.	<b>TVD Reference:</b>	GL 4612.6' & KB 20' @ 4632.60ft
<b>Project:</b>	Weld County, CO NAD 83	<b>MD Reference:</b>	GL 4612.6' & KB 20' @ 4632.60ft
<b>Site:</b>	Anschutz Equus Farms 3-62-4_5 NENE Pad	<b>North Reference:</b>	True
<b>Well:</b>	Anschutz Equus Farm 3-62-4-0801C	<b>Survey Calculation Method:</b>	Minimum Curvature
<b>Wellbore:</b>	OH		
<b>Design:</b>	Plan 1		

Planned Survey										
Measured Depth (ft)	Inclination (°)	Azimuth (°)	Vertical Depth (ft)	+N/-S (ft)	+E/-W (ft)	Vertical Section (ft)	Dogleg Rate (°/100ft)	Build Rate (°/100ft)	Turn Rate (°/100ft)	
15,000.00	89.62	269.715	6,259.19	205.77	-8,578.89	8,577.76	0.00	0.00	0.00	
15,100.00	89.62	269.715	6,259.85	205.28	-8,678.89	8,677.75	0.00	0.00	0.00	
15,200.00	89.62	269.715	6,260.50	204.78	-8,778.88	8,777.75	0.00	0.00	0.00	
15,300.00	89.62	269.715	6,261.16	204.28	-8,878.88	8,877.75	0.00	0.00	0.00	
15,400.00	89.62	269.715	6,261.82	203.78	-8,978.88	8,977.75	0.00	0.00	0.00	
15,500.00	89.62	269.715	6,262.47	203.28	-9,078.87	9,077.74	0.00	0.00	0.00	
15,600.00	89.62	269.715	6,263.13	202.79	-9,178.87	9,177.74	0.00	0.00	0.00	
15,700.00	89.62	269.715	6,263.78	202.29	-9,278.87	9,277.74	0.00	0.00	0.00	
15,800.00	89.62	269.715	6,264.44	201.79	-9,378.86	9,377.74	0.00	0.00	0.00	
15,900.00	89.62	269.715	6,265.09	201.29	-9,478.86	9,477.74	0.00	0.00	0.00	
16,000.00	89.62	269.715	6,265.75	200.79	-9,578.86	9,577.73	0.00	0.00	0.00	
16,100.00	89.62	269.715	6,266.40	200.29	-9,678.85	9,677.73	0.00	0.00	0.00	
16,200.00	89.62	269.715	6,267.06	199.80	-9,778.85	9,777.73	0.00	0.00	0.00	
16,300.00	89.62	269.715	6,267.72	199.30	-9,878.85	9,877.73	0.00	0.00	0.00	
16,343.43	89.62	269.715	6,268.00	199.08	-9,922.27	9,921.16	0.00	0.00	0.00	
TD at 16343.43										

Design Targets									
Target Name	Dip Angle (°)	Dip Dir. (°)	TVD (ft)	+N/-S (ft)	+E/-W (ft)	Northing (usft)	Easting (usft)	Latitude	Longitude
3-62-4-0801C LP	0.00	0.000	6,204.00	247.73	-159.64	1,339,977.62	3,329,036.03	40° 15' 38.279 N	104° 19' 15.510 W
- hit/miss target									
- Shape									
- plan misses target center by 0.01ft at 6580.46ft MD (6204.00 TVD, 247.72 N, -159.64 E)									
- Point									
3-62-4-0801C PBHL	0.00	0.000	6,268.00	199.08	-9,922.27	1,339,799.12	3,319,274.92	40° 15' 37.778 N	104° 21' 21.442 W
- plan hits target center									
- Point									

Plan Annotations					
Measured Depth (ft)	Vertical Depth (ft)	Local Coordinates			
		+N/-S (ft)	+E/-W (ft)	Comment	
1,000.00	1,000.00	0.00	0.00	Start Build 2.00	
1,867.06	1,853.88	67.96	111.08	Start 300.18 hold at 1867.06 MD	
2,167.24	2,140.42	114.65	187.40	Start Drop -1.00	
3,901.37	3,848.19	250.56	409.55	Start 1782.86 hold at 3901.37 MD	
5,684.23	5,631.05	250.56	409.55	Start DLS 10.00 TFO 269.71	
6,580.47	6,204.00	247.72	-159.64	Start 9762.96 hold at 6580.47 MD	
16,343.43	6,268.00	199.08	-9,922.27	TD at 16343.43	