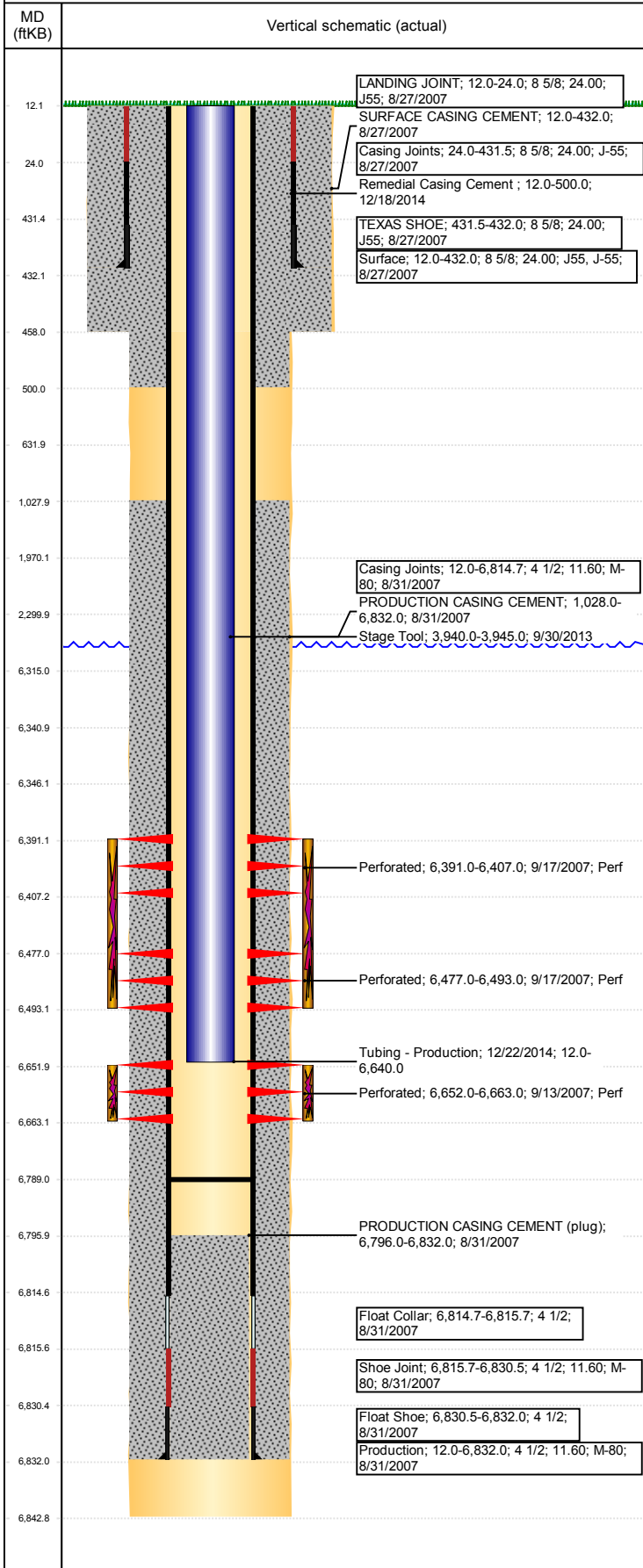


Well Name: WELLS RANCH USX BB15-13

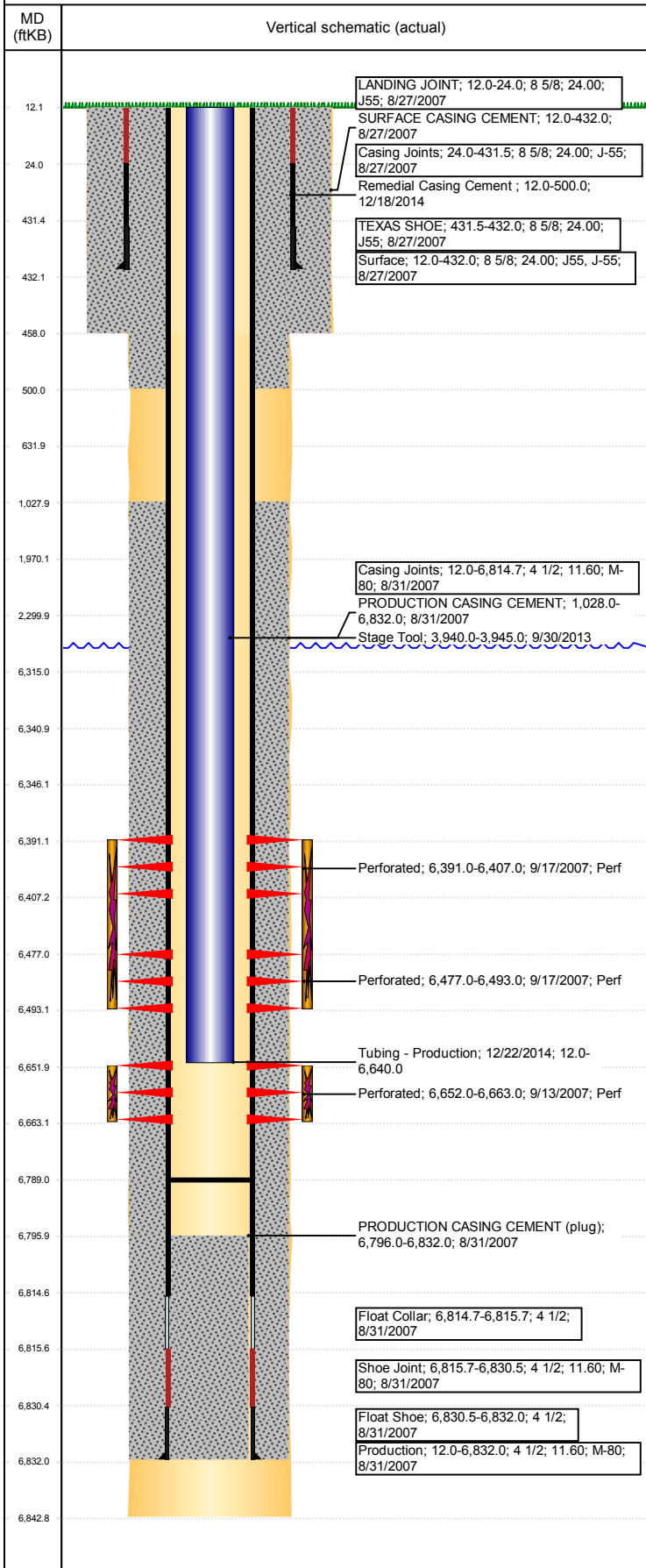
VERTICAL - ORIGINAL HOLE, 9/19/2017 3:28:02 PM



Well Header			
API 05-123-26176	Business Unit DJ BASIN	District 15	Well Config VERTICAL
Original KB Elevation (ft) 4,667	KB - GL / MSL (ftKB) 12.00	Spud Date 8/27/2007	P & A Date
Comment TD DISCREPANCY: DRILLERS AND ST RPT 6837', LOGGERS TD 6843'			
Directions To Well WCR 67 & WCR 68, E 0.2, S TO COW CAMP, SW 0.6, S 1.0, SE 0.2, SW & S 1.5, SW 0.1 INTO LOCATION			
Current PBDT (mKB) ORIGINAL HOLE - 6,789.0			
Surface Location (Congressional)			
Quarter 3 SW	Quarter 4 SW	Section 15	Township 5
Township N/S Dir N		Range 63	Range E/W Dir W
Bottom Hole Location			
North-South Distance (ft)		From N or S Line	East-West Distance (ft)
			From E or W Line
Plug Back Total Depths			
Date	Depth (ftKB)	Method	Com
8/30/2007	6,815.0	CASING TALLY	FLOAT SHOE
9/12/2007	6,796.0	CASED HOLE LOG	DEPTH LOGGER ON CBL
1/15/2008	6,789.0	TAG	DRILL UP CIFTF AND CHASE DOWN TO 6789
Wellbore Sections			
Section Des	Size (in)	Act Top, MD (ftKB)	Act Btm, MD (ftKB)
SURFACE	12 1/4	12	458
PRODUCTION	7 7/8	458	6,843
Zone Statuses			
Zone Name	Status Date	Status	Fluid Type
CODELL	9/19/2007	PR	Water
CODELL	2/1/2010	PR	Water
NIOBRARA	9/19/2007	PR	Water
NIOBRARA	2/1/2010	PR	Water
NIOBRARA	10/20/2015	PR	Water
Casing Strings			
Csg Des	Run Date	OD (in)	Wt/Len (lb/ft)
Surface	8/27/2007	8 5/8	24.00
Production	8/31/2007	4 1/2	11.60
Cement			
Des	Top (ftKB)	Btm (ftKB)	
SURFACE CASING CEMENT	12.0	432.0	
PRODUCTION CASING CEMENT	1,028.0	6,832.0	
Remedial Casing Cement	12.0	500.0	
Tubing Components			
Item Des	OD (in)	Wt (lb/ft)	Grade
Perforation Data			
Linked Zone	Bnch/Stg	Sum of Entered Shot Total	Date
NIOBRARA, ORIGINAL HOLE	A	64	9/17/2007
NIOBRARA, ORIGINAL HOLE	B	64	9/17/2007
CODELL, ORIGINAL HOLE		44	9/13/2007
Total (Sum)		172	
Other In Hole			
Run Date	Des	OD (in)	Top (ftKB)
6/5/2017	Cast Iron Bridge Plug	3.99	6,341.0
			Btm (ftKB)
			6,346.0
Logs			
Date	Type	Top, MD (ftKB)	Btm, MD (ftKB)
8/30/2007	Compensated Density	2,500.0	6,823.0
8/30/2007	Induction	432.0	6,843.0
9/12/2007	CBL/CCL/GR	900.0	6,794.0

Well Name: WELLS RANCH USX BB15-13

VERTICAL - ORIGINAL HOLE, 9/19/2017 3:28:03 PM



Stimulation Intervals			
Bnch/Stg	Start Date	Primary Job Type	
	9/17/2007	DRILLING/COMPLETION - ORIGINAL	
Comment			
Volume Slurry Total (gal)			
171,234.00			
Treat Pressure Avg (psi)	Treat Pressure Max (psi)	Slurry Rate Avg (bbl/min)	Slurry Rate Max (bbl/min)
4,031.0	4,881.0	51.2	52.1
Bnch/Stg	Start Date	Primary Job Type	
	9/17/2007	DRILLING/COMPLETION - ORIGINAL	
Comment			
Volume Slurry Total (gal)			
77,364.00			
Treat Pressure Avg (psi)	Treat Pressure Max (psi)	Slurry Rate Avg (bbl/min)	Slurry Rate Max (bbl/min)
3,203.0	3,681.0	18.6	18.9