

**ConocoPhillips Company**

---

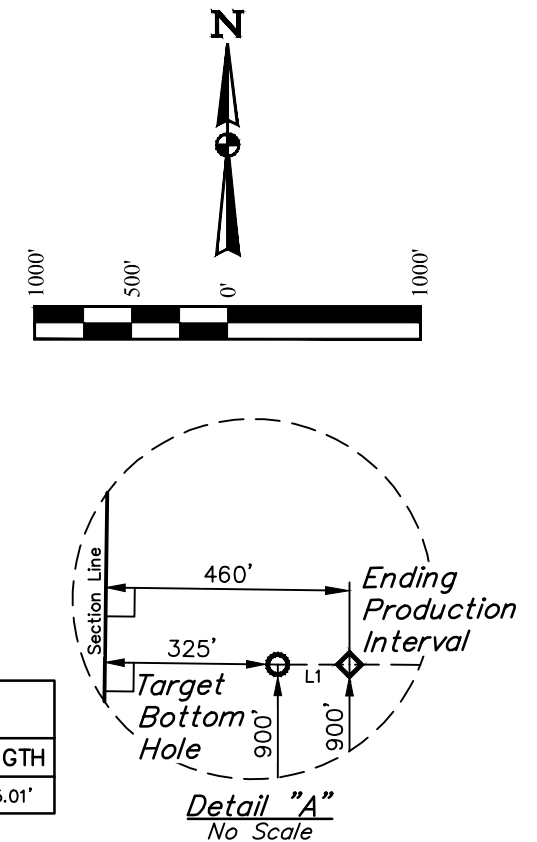
**COTTONWOOD CREEK #4-65 27-28 4BH**  
**SW 1/4 SE 1/4, SECTION 27, T4S, R65W, 6th P.M.**  
**ARAPAHOE COUNTY, COLORADO**

**BASIS OF BEARINGS**  
BASIS OF BEARINGS IS A G.P.S. OBSERVATION

**BASIS OF ELEVATION**

---

BENCHMARK 374 LOCATED ON THE SECTION LINE BETWEEN  
SECTIONS 12 & 13, T5S, R64W, 6th. P.M., TAKEN FROM 1988  
PUBLISHED DATUM BY THE UNITED STATES DEPARTMENT OF  
THE INTERIOR, GEOLOGICAL SURVEY AS BEING 6054.61 FEET.



LINE TABLE		
LINE	DIRECTION	LENGTH
L1	N89°55'38"W	135.01'

CERTIFICATE OF SURVEY

THE ABOVE MAP WAS PREPARED FROM FIELD  
MEASUREMENTS AND UNDER MY SUPERVISION  
IT IS TRUE AND CORRECT TO THE BEST OF MY  
KNOWLEDGE.

*[Signature]*

28285

REGISTERED LAND SURVEYOR  
REGISTRATION NO. 28285  
STATE OF OHIO






OFFICIAL LAND SURVEYOR

685-15-17

**PDOP = 1.3**

REV: 2 08-15-17 K.B. (NAME &amp; SL CHANGE)

**LEGEND:**

-  = 90° SYMBOL
-  = PROPOSED WELLHEAD.
-  = PRODUCTION INTERVAL.
-  = TARGET BOTTOM HOLE.
-  = SECTION CORNERS LOCATED.

<b>NAD 83 (SURFACE LOCATION)</b>	<b>NAD 83 (BEG. PROD. INTERVAL)</b>	<b>NAD 83 (ENDING PROD. INTERVAL)</b>	<b>NAD 83 (TARGET BOTTOM HOLE)</b>
LATITUDE = 39°40'06.47" (39.668464)	LATITUDE = 39°40'11.48" (39.669856)	LATITUDE = 39°40'11.58" (39.669883)	LATITUDE = 39°40'11.58" (39.669883)
LONGITUDE = 104°38'45.42" (104.645950)	LONGITUDE = 104°38'33.26" (104.642572)	LONGITUDE = 104°40'37.20" (104.677000)	LONGITUDE = 104°40'38.93" (104.677481)
<b>NAD 27 (SURFACE LOCATION)</b>	<b>NAD 27 (BEG. PROD. INTERVAL)</b>	<b>NAD 27 (ENDING PROD. INTERVAL)</b>	<b>NAD 27 (TARGET BOTTOM HOLE)</b>
LATITUDE = 39°40'06.51" (39.668475)	LATITUDE = 39°40'11.53" (39.669869)	LATITUDE = 39°40'11.62" (39.669894)	LATITUDE = 39°40'11.62" (39.669894)
LONGITUDE = 104°38'43.54" (104.645428)	LONGITUDE = 104°38'31.37" (104.642047)	LONGITUDE = 104°40'35.31" (104.676475)	LONGITUDE = 104°40'37.04" (104.676956)
<b>STATE PLANE NAD 83 (CO. CEN.)</b>	<b>STATE PLANE NAD 83 (CO. CEN.)</b>	<b>STATE PLANE NAD 83 (CO. CEN.)</b>	<b>STATE PLANE NAD 83 (CO. CEN.)</b>
N: 1669496.60 E: 3240418.81	N: 1670012.99 E: 3241365.51	N: 1669933.02 E: 3231673.93	N: 1669933.02 E: 3231673.93
<b>STATE PLANE NAD 27 (CO. CEN.)</b>	<b>STATE PLANE NAD 27 (CO. CEN.)</b>	<b>STATE PLANE NAD 27 (CO. CEN.)</b>	<b>STATE PLANE NAD 27 (CO. CEN.)</b>
N: 669489.21 E: 2240572.68	N: 670005.60 E: 2241519.37	N: 669925.47 E: 2231827.86	N: 669924.16 E: 2231692.90



**UELS, LLC**  
Corporate Office \* 85 South 200 East  
Vernal, UT 84078 \* (435) 789-1017

<b>SURVEYED BY</b>	GREG WEIMER, C.T.	06-07-17	<b>SCALE</b>
<b>DRAWN BY</b>	K.B.	05-21-15	1" = 1000'

## WELL LOCATION PLAT