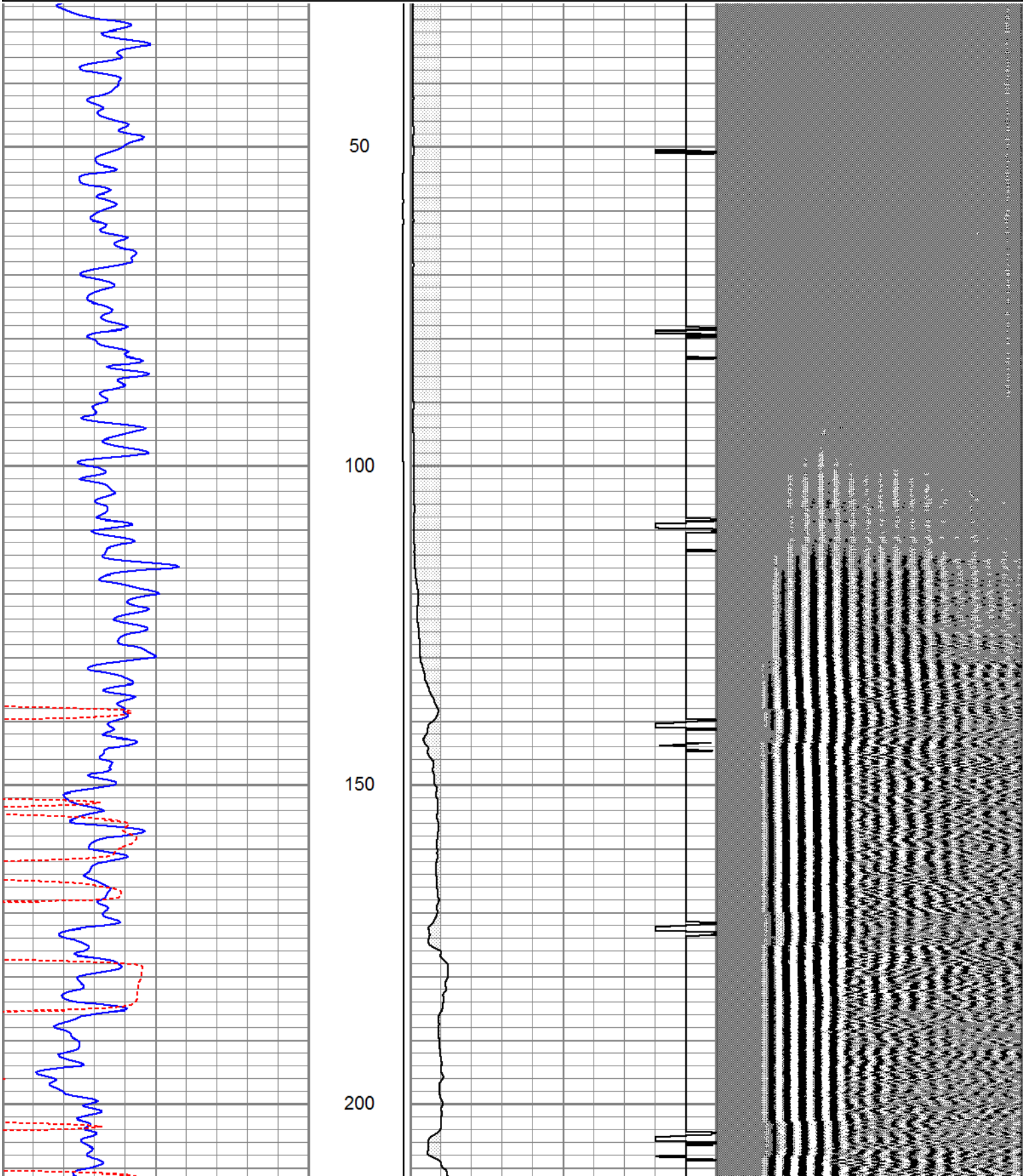
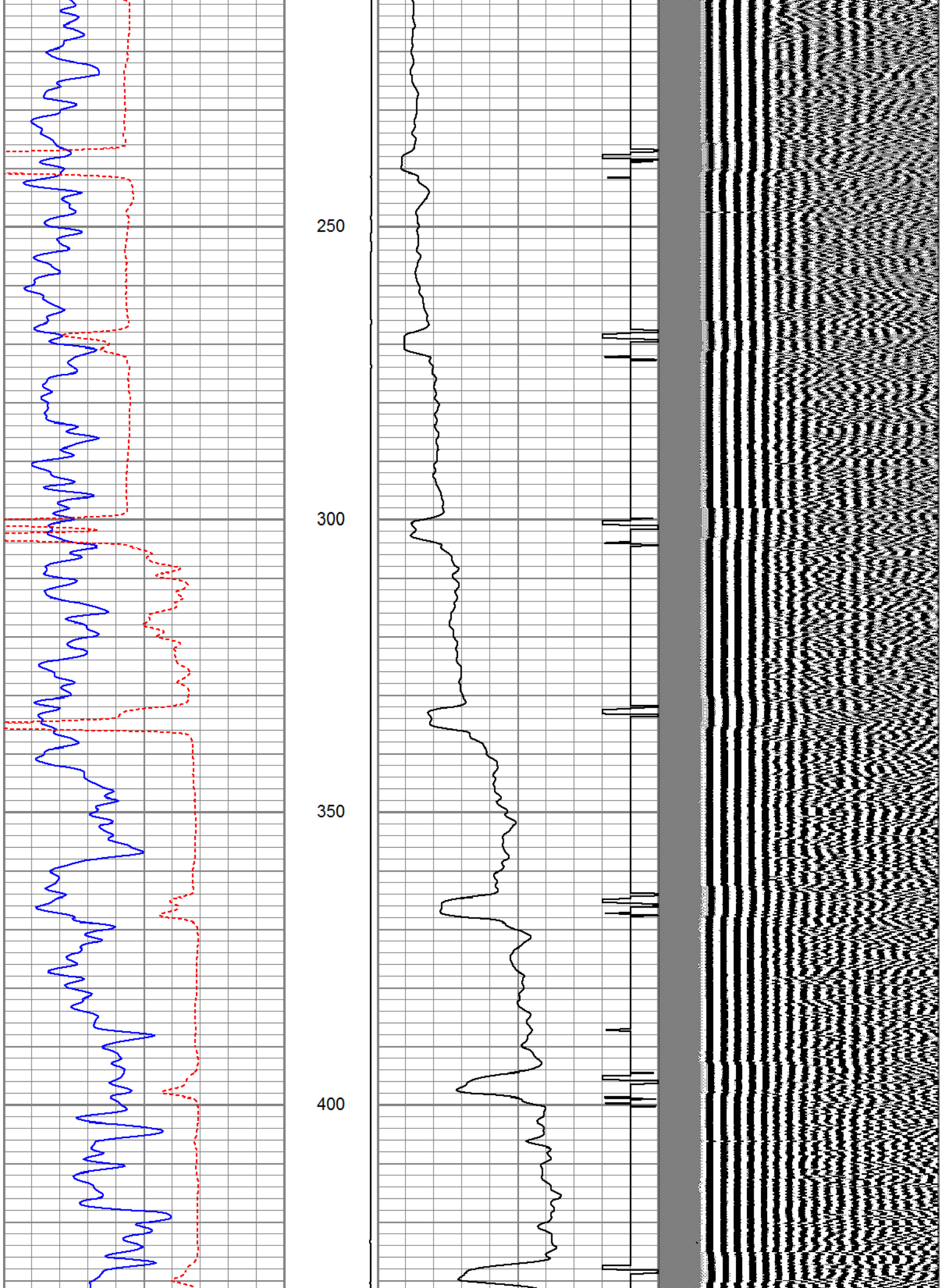


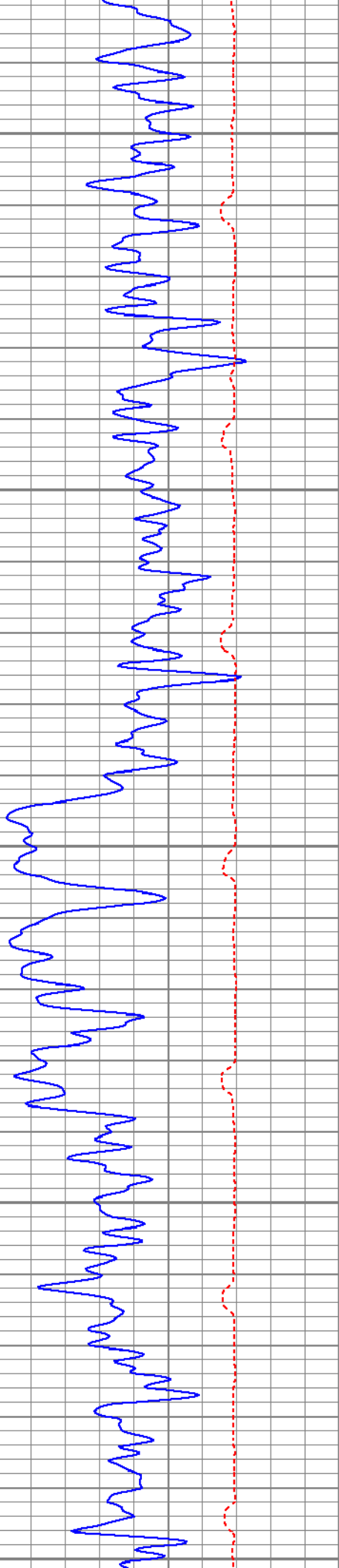


Database File: aug-2017.db  
 Dataset Pathname: GRCBL/pass6  
 Presentation Format: cbl  
 Dataset Creation: Tue Aug 29 16:41:49 2017  
 Charted by: Depth in Feet scaled 1:240

0	GR (GAPI)	150	LTEN	18	CCL	-2	200	VDL	1200
150	GR (GAPI)	300	(lb)	0	AMP3 (mV)	100			
400	TT3FT (usec)	200	4000	100					







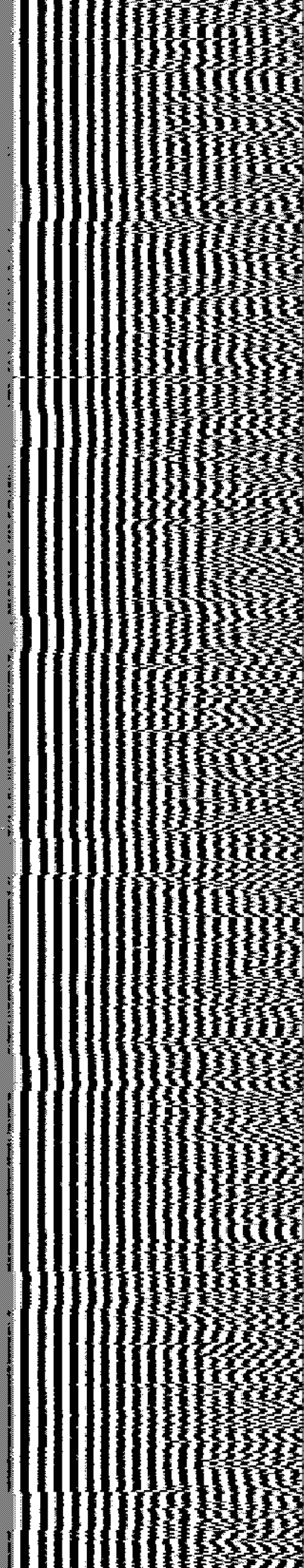
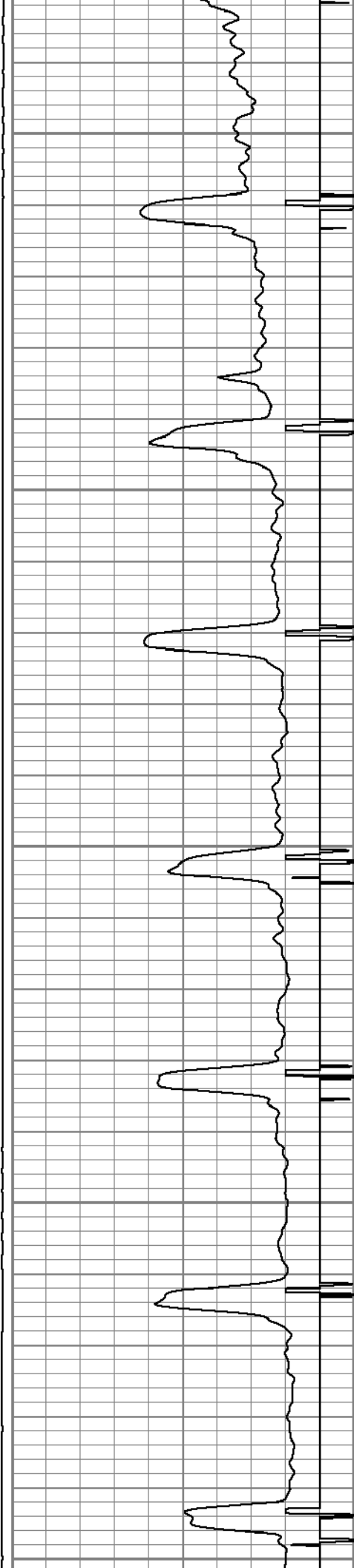
450

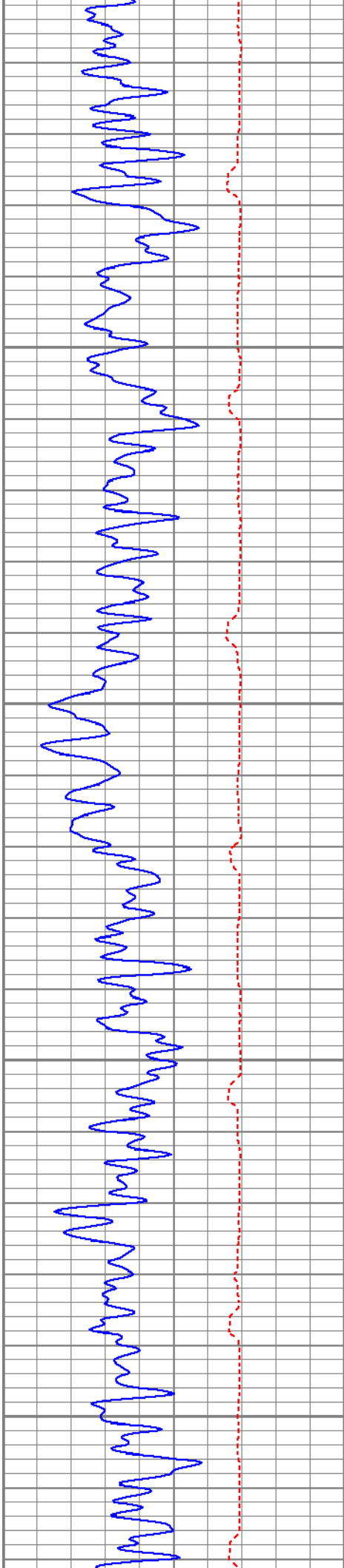
500

550

600

650



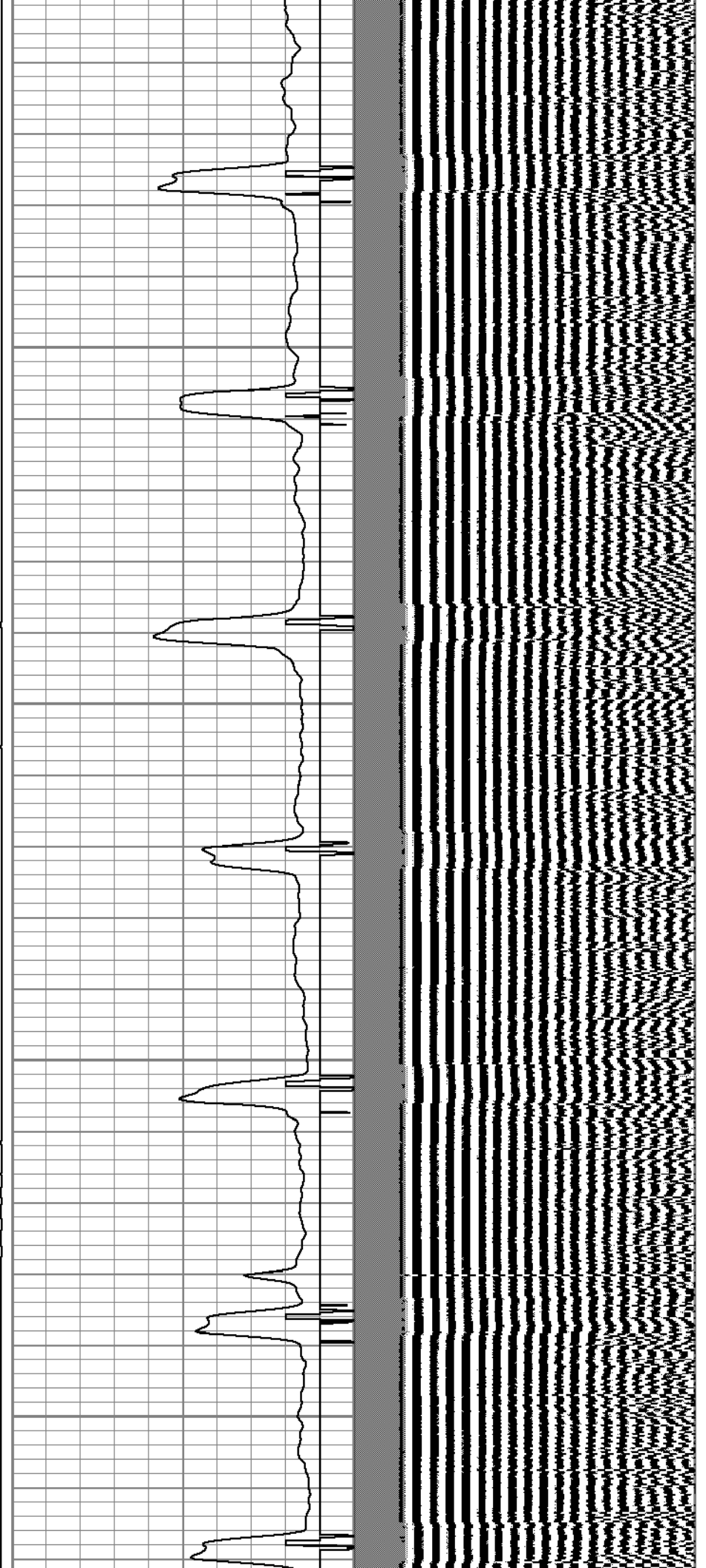


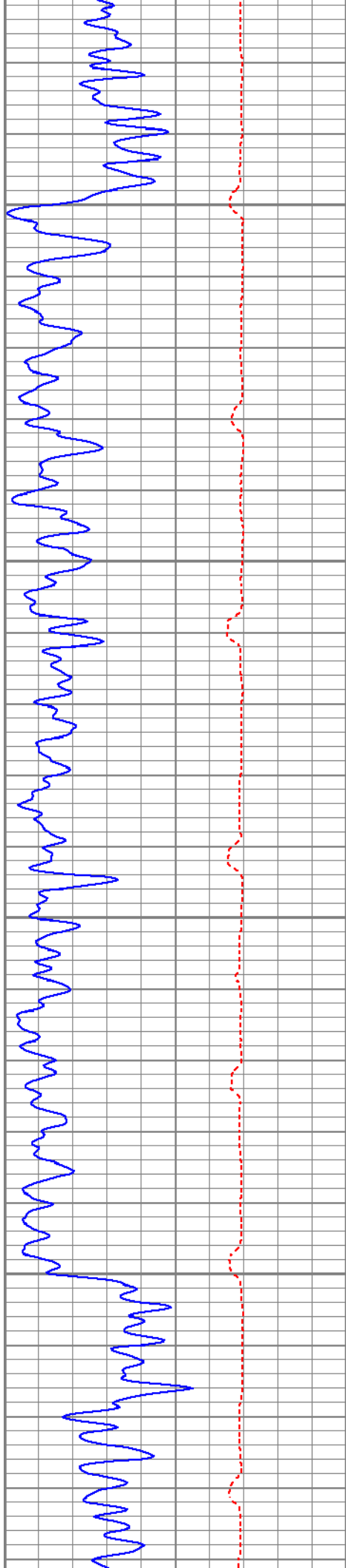
700

750

800

850



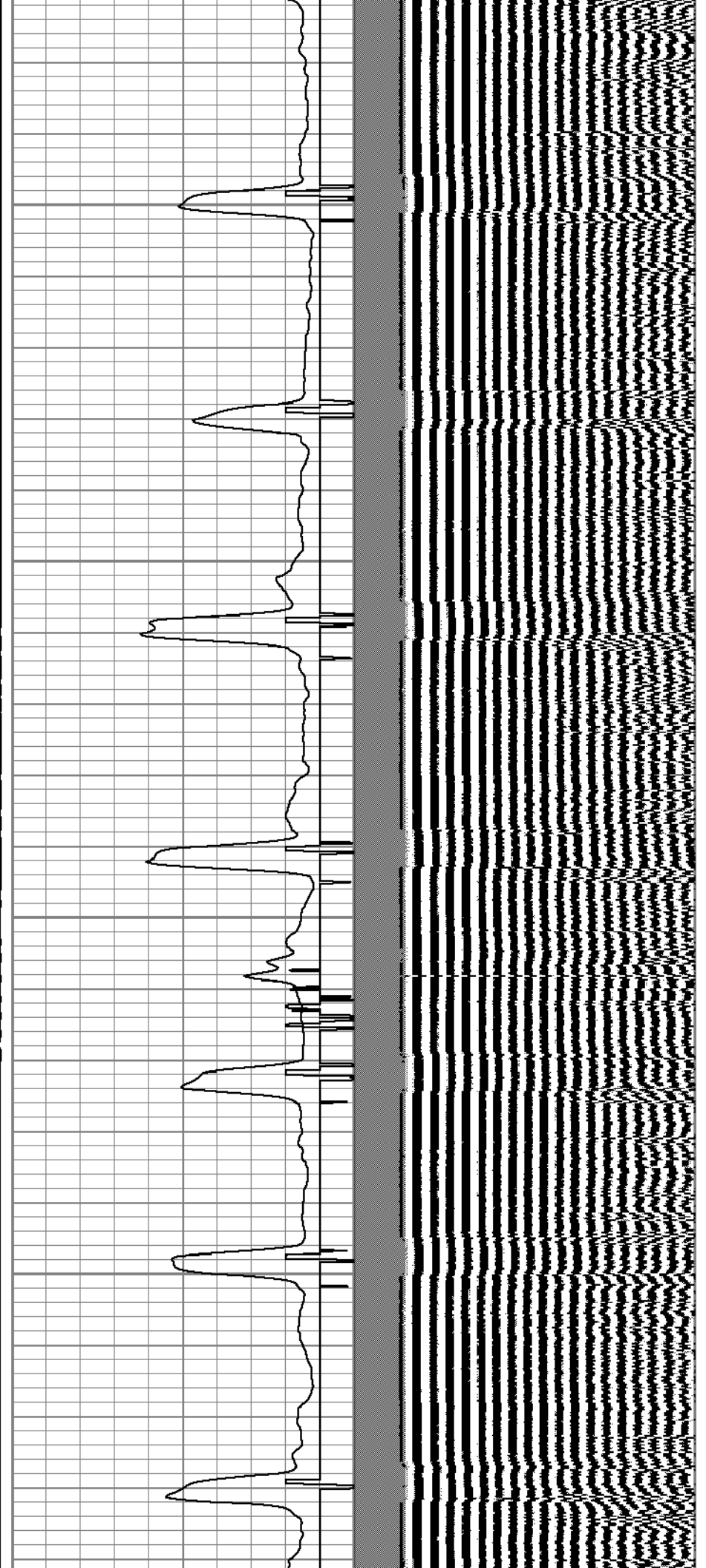


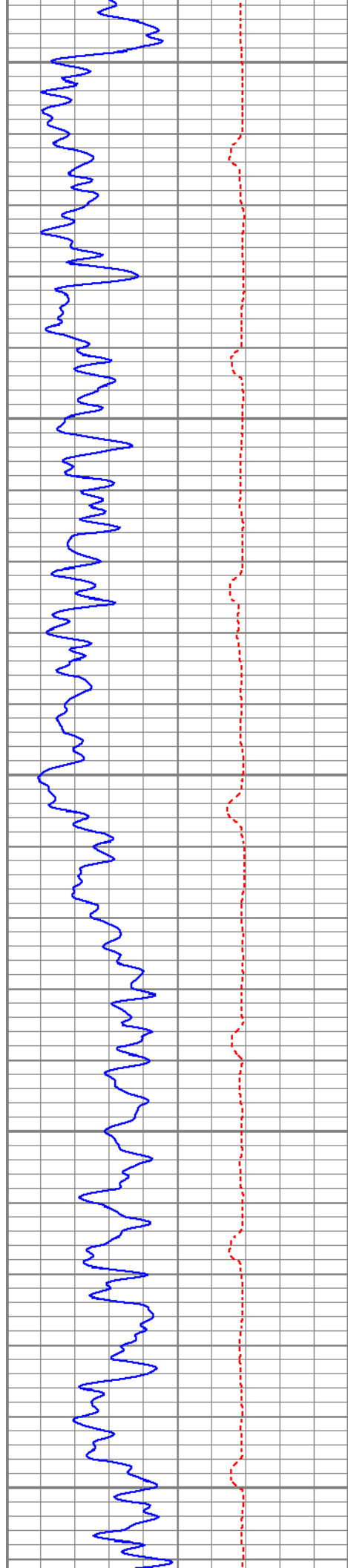
900

950

1000

1050





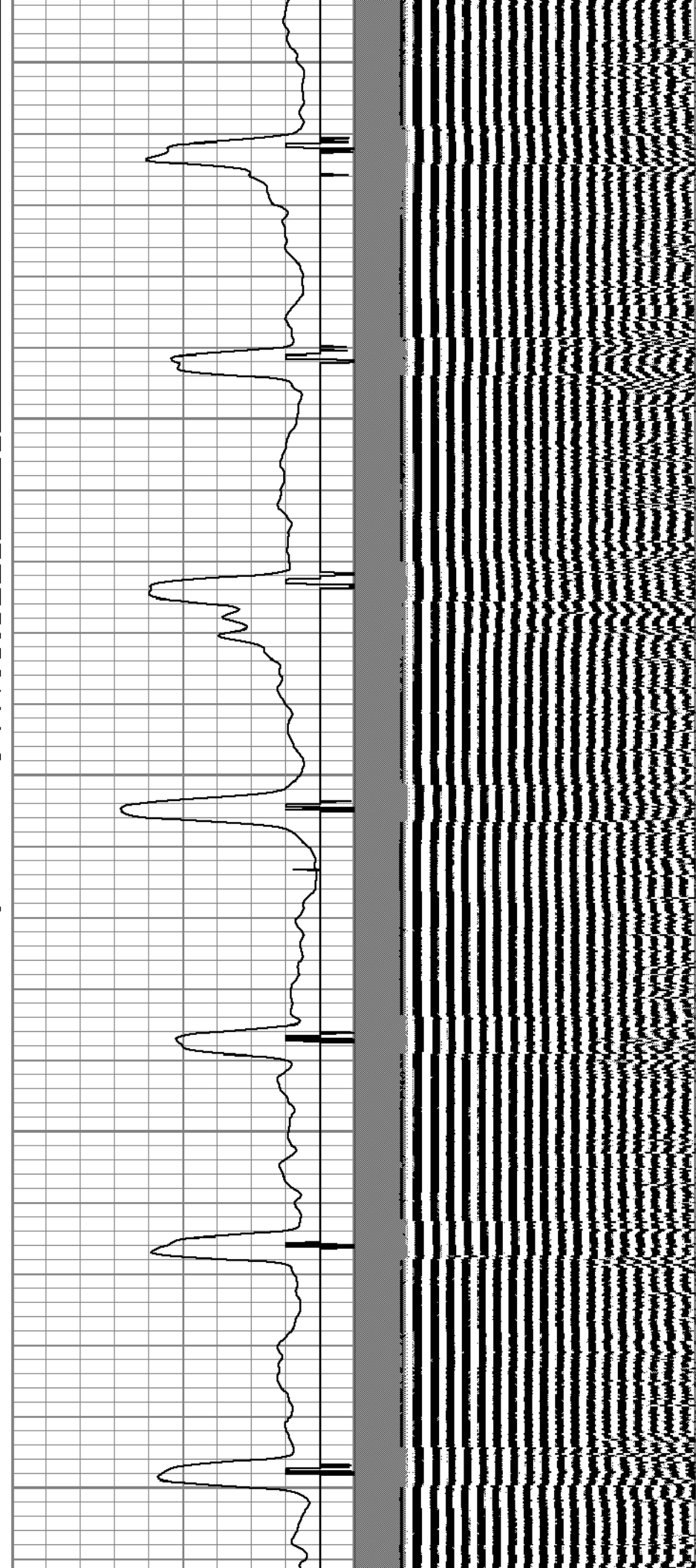
1100

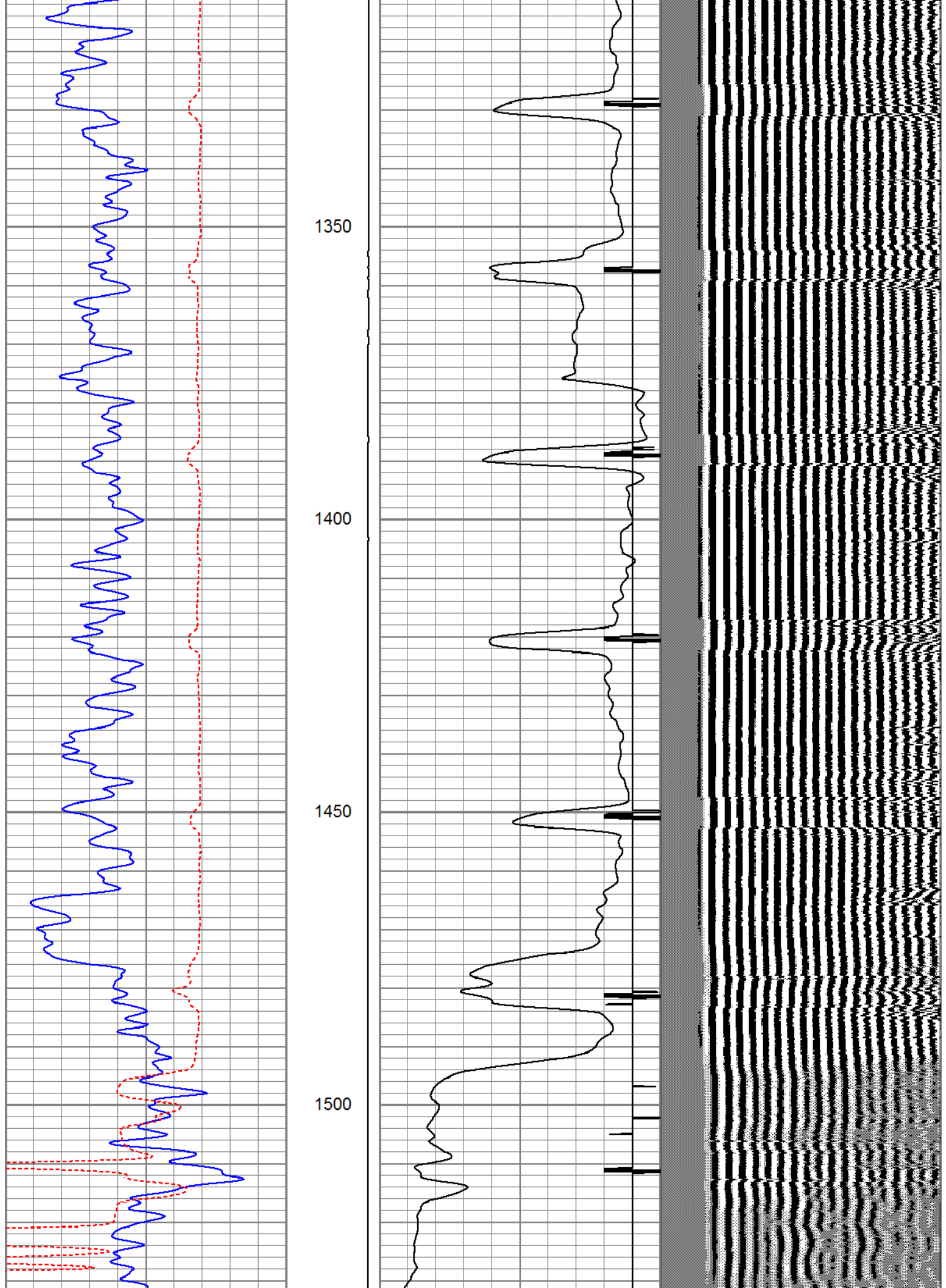
1150

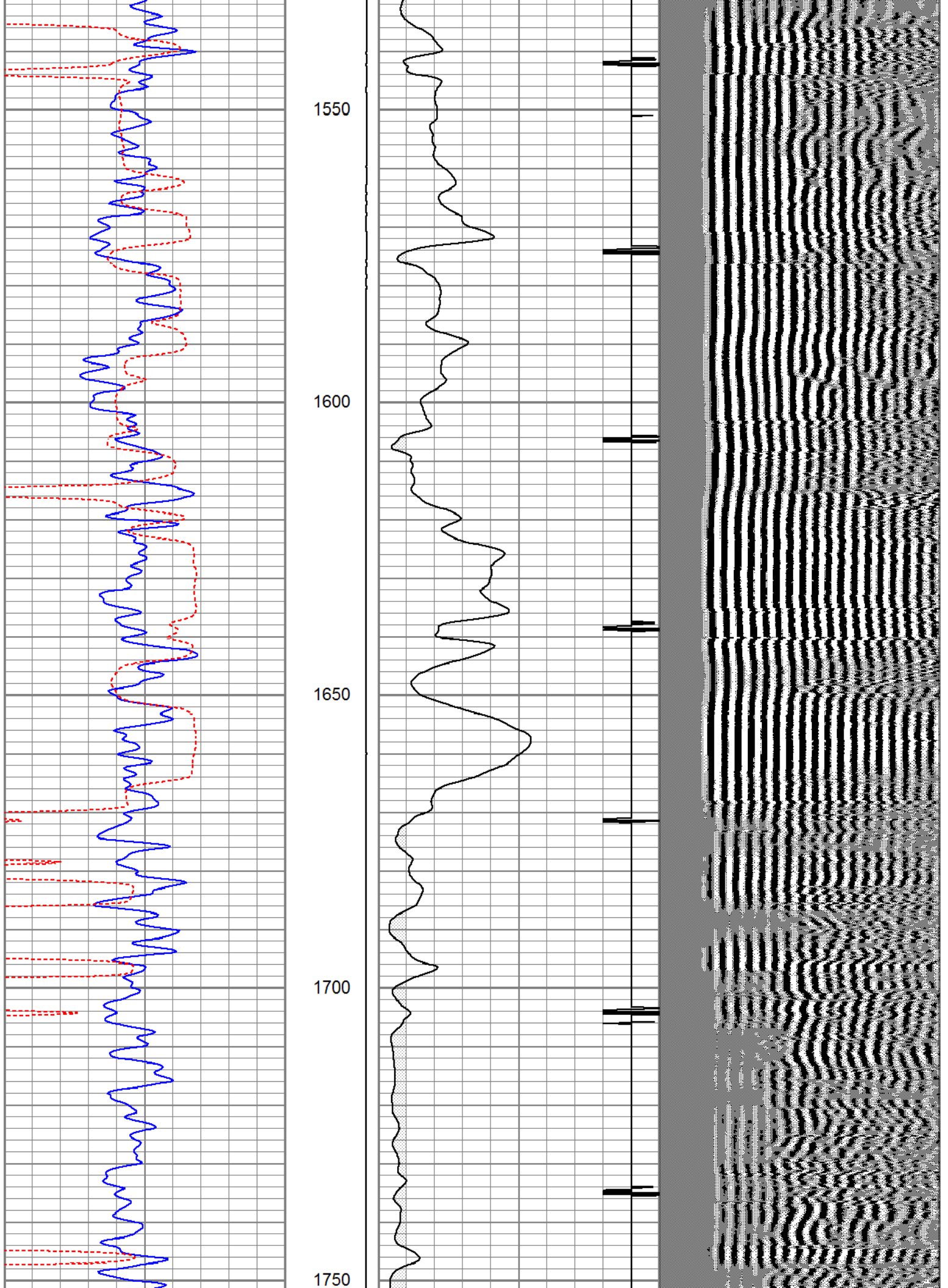
1200

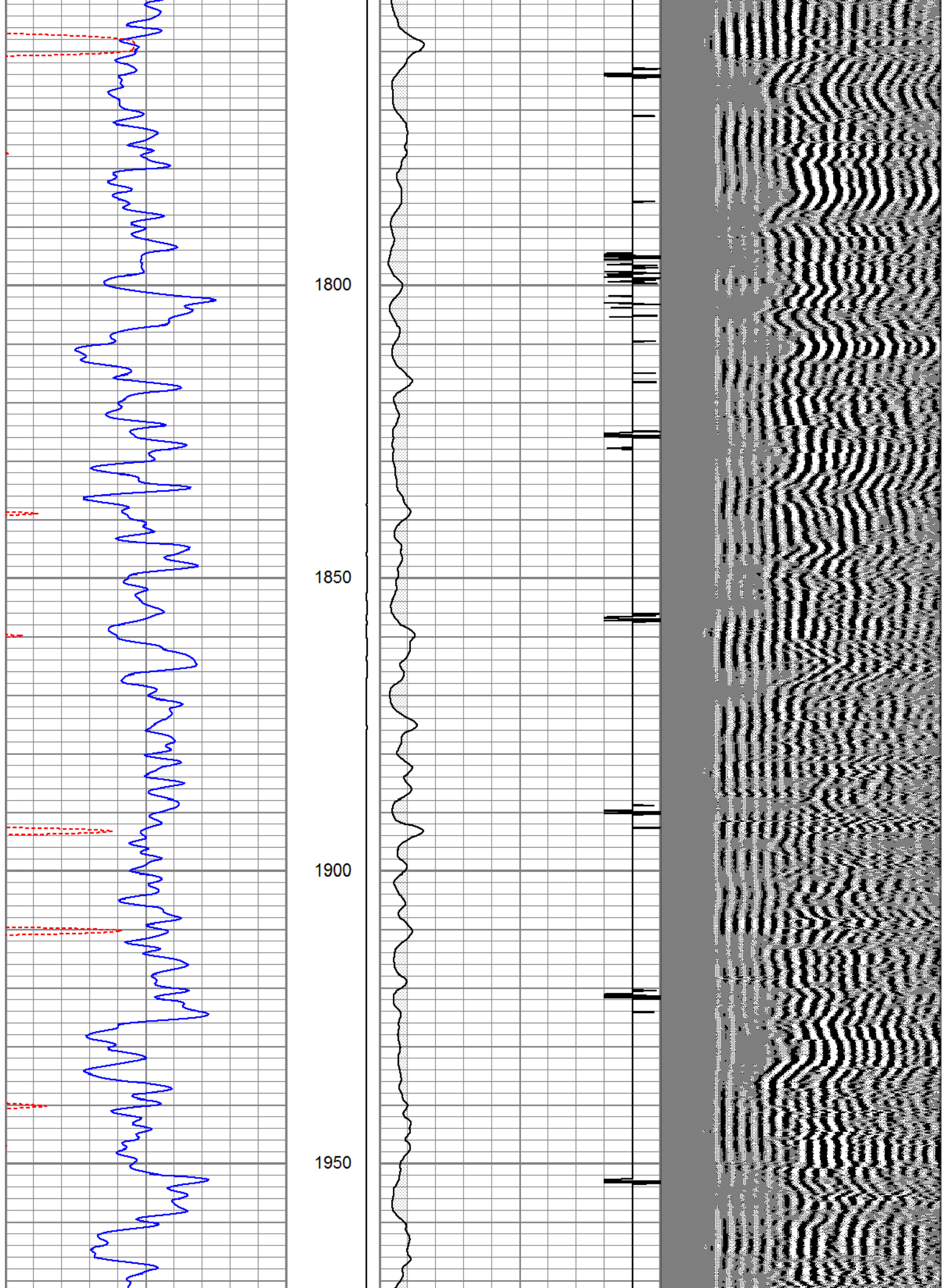
1250

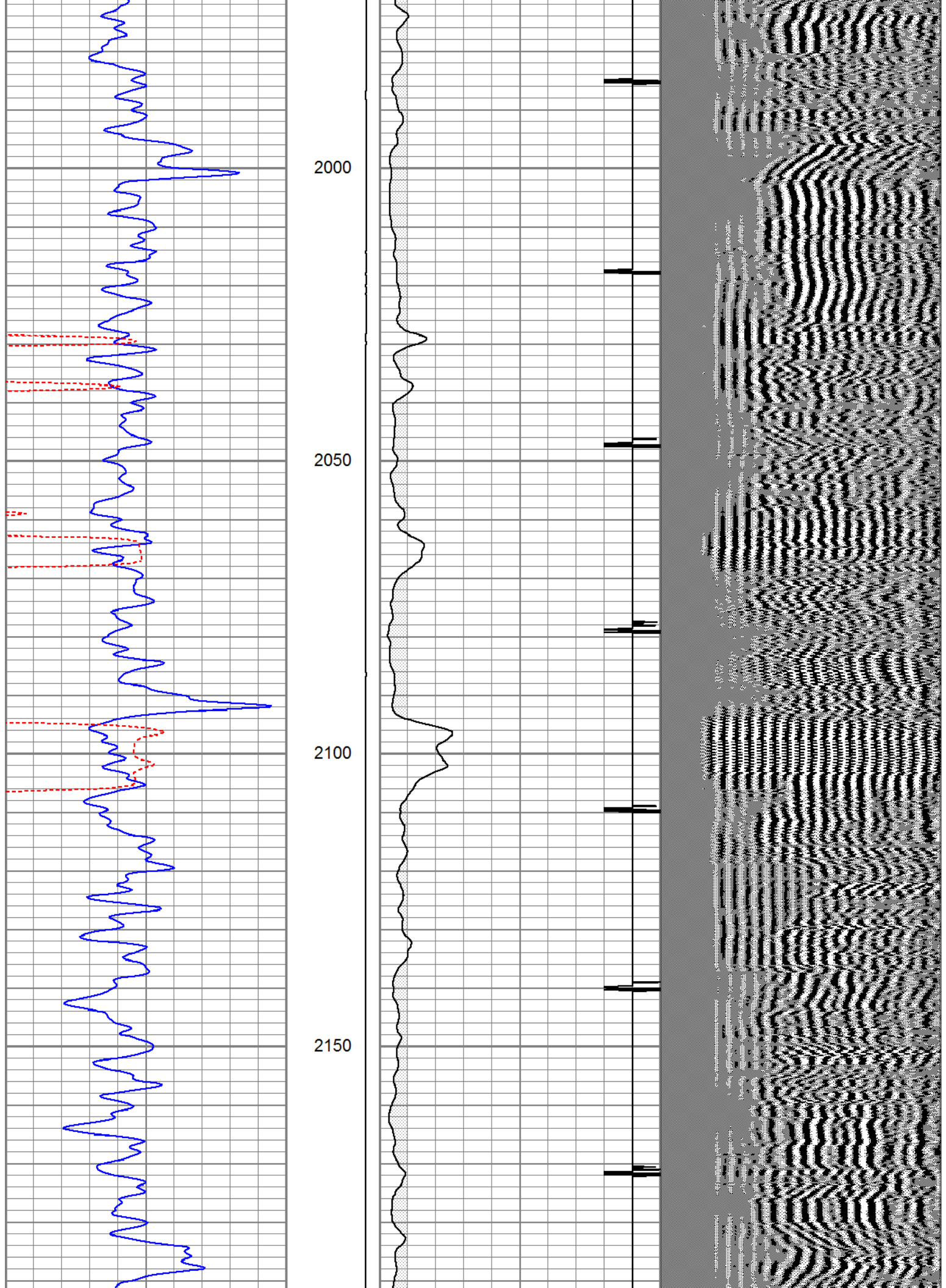
1300

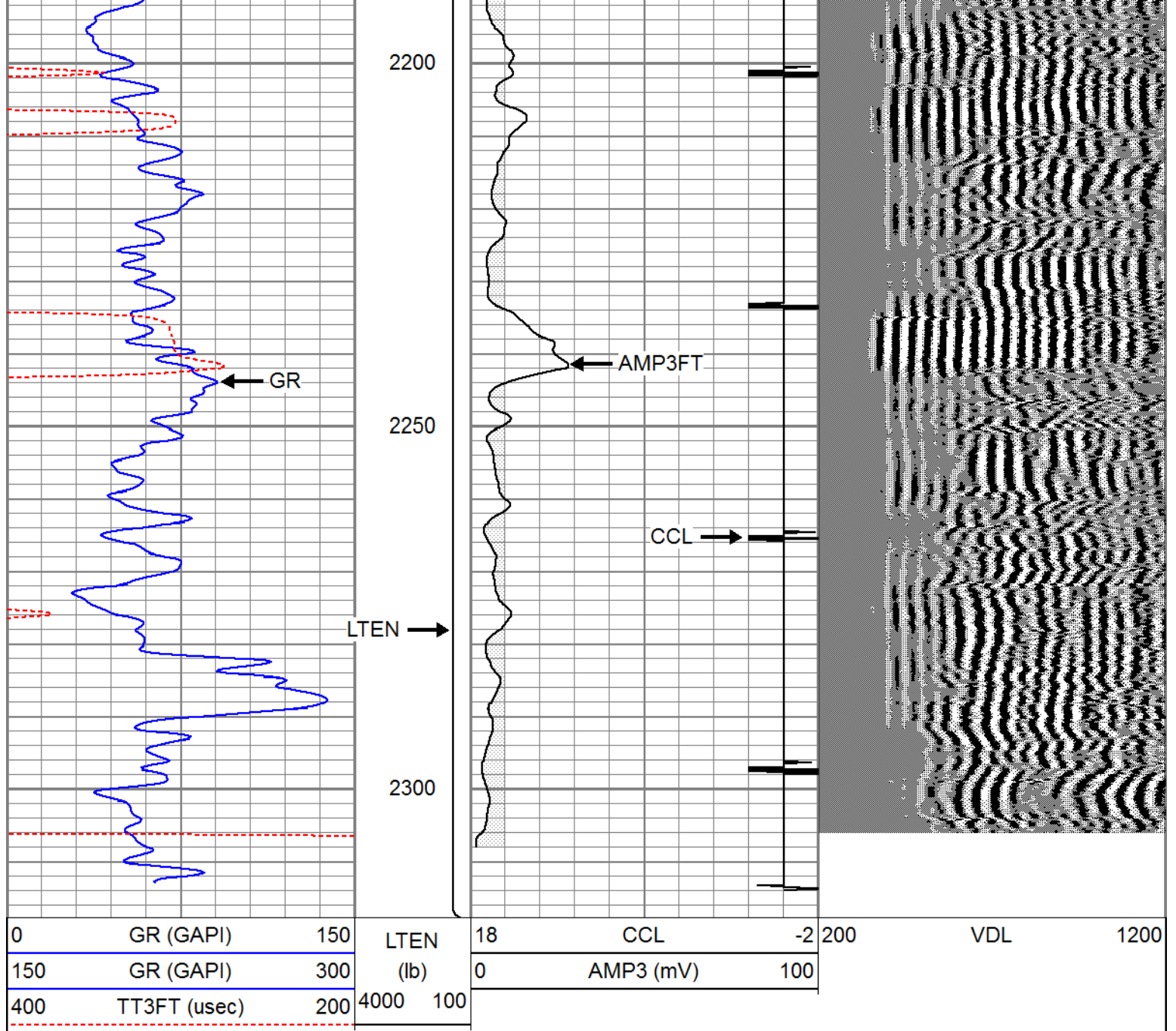




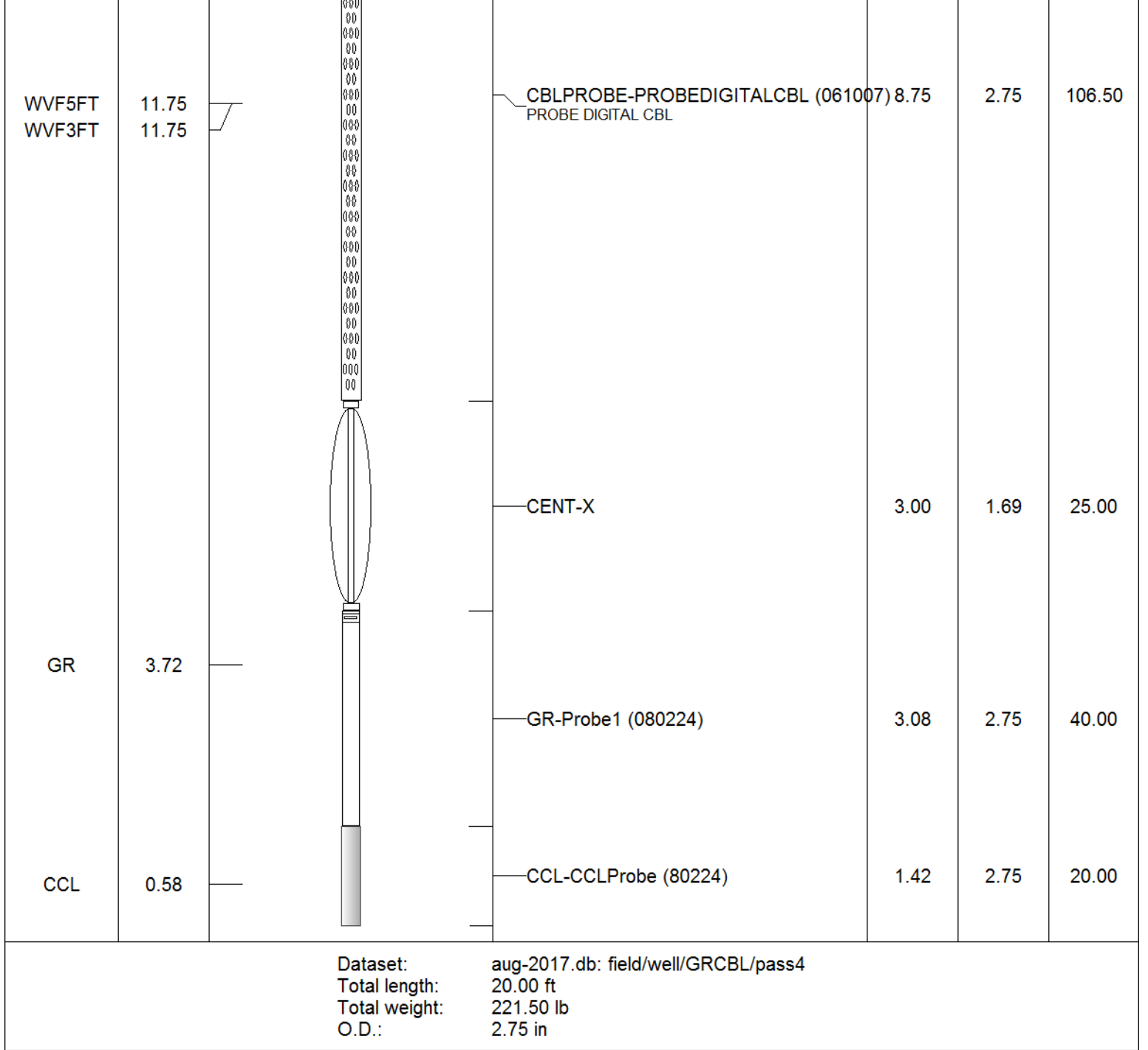








Sensor	Offset (ft)	Schematic	Description	Length (ft)	O.D. (in)	Weight (lb)
			CHD-None	0.75	1.50	5.00
			CENT-X	3.00	1.69	25.00



## Log Variables

DatabaseC:\ProgramData\Warrior\Data\aug-2017.db  
 Dataset field/well/GRCBL/pass4/\_vars\_

### Top - Bottom

BOREID in 6.25	BOTTEMP degF 100	CASEOD in 4.5	CASETHCK in 0	CASEWGHT lb/ft 11.5	MAXAMPL mV 0	MINAMPL mV 1
MINATTN db/ft 0.8	PERFS 0	PPT usec 0	SRFTEMP degF 0	TDEPTH ft 0		

### Variable Description

BOREID : Borehole I.D.  
 BOTTEMP : Bottom Hole Temperature  
 CASEOD : Casing O.D.  
 CASETHCK : Casing Thickness

MINAMPL : Minimum Amplitude  
 MINATTN : Minimum Attenuation  
 PERFS : Perforation Flag  
 PPT : Predicted Pipe Time

CASEWGHT : Casing Weight  
MAXAMPL : Maximum Amplitude

SRFTEMP : Surface Temperature  
TDEPTH : Total Depth



Company	CHACO ENERGY	
Well	COGBURN NO. 1-22	
Field	MIDWAY	
County	BASO	
State	COLORADO	Country