



Great Western Operating  
Company, LLC  
1801 Broadway, Suite 500  
Denver, CO 80202

303.398.0302  
866.742.1784 Fax  
info@gwogco.com  
www.gwogco.com

---

September 8, 2017

Colorado Oil and Gas Conservation Commission  
1120 Lincoln Street, Suite 801  
Denver, CO 80203

**RE: Proposed Wellbore Spacing Unit**  
B-Farm LD 18-393HN  
Niobrara New Drill  
NENW Sec. 7, Township 1S, Range 67W  
Adams County, Colorado

Dear Director Lepore,

Great Western Operating Company, LLC (Great Western) is planning to drill the above captioned well in accordance with the provisions of Colorado Oil and Gas Conservation Commission (COGCC) Rule 318A.e.

Great Western's proposed wellbore spacing unit consists of:

Township 1 South, Range 67 West (Adams County):  
Section 7: W2,W2E2  
Section 18: W2,W2E2  
Section 19: N2NW/4, NWNE

Total Acres: 1080

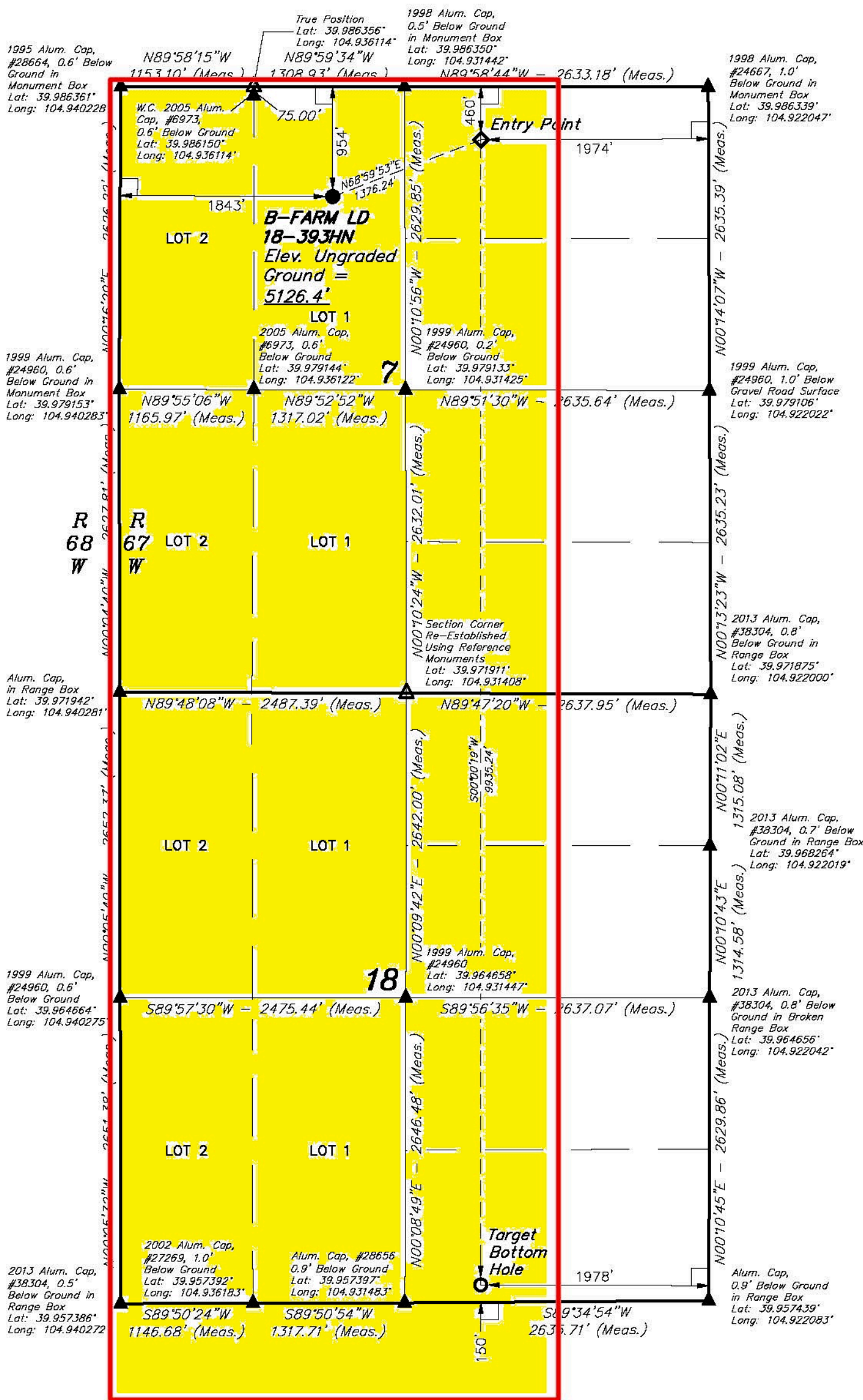
The 30 day notification time period has passed and we have not yet received any objections to such well locations or proposed spacing unit, therefore Great Western hereby requests the Director to approve the above mentioned well. Great Western respectfully requests the COGCC review the enclosed map illustrating the proposed wellbore spacing unit.

Respectfully,

*Christi Ng*

**Christi Ng**  
Senior Regulatory Analyst  
Great Western Operating Company, LLC

*T1S, R67W, 6th P.M.*



**PDOP = 1.5**



<b>NAD 83 (SURFACE LOCATION)</b>	<b>NAD 83 (ENTRY POINT)</b>	<b>NAD 83 (TARGET BOTTOM HOLE)</b>
<b>LATITUDE = 39°59'01.45" (39.983736)</b>	<b>LATITUDE = 39°59'06.31" (39.985086)</b>	<b>LATITUDE = 39°57'28.15" (39.957819)</b>
<b>LONGITUDE = 104°56'01.22" (104.933672)</b>	<b>LONGITUDE = 104°55'44.71" (104.929086)</b>	<b>LONGITUDE = 104°55'44.89" (104.929136)</b>
<b>NAD 27 (SURFACE LOCATION)</b>	<b>NAD 27 (ENTRY POINT)</b>	<b>NAD 27 (TARGET BOTTOM HOLE)</b>
<b>LATITUDE = 39°59'01.51" (39.983753)</b>	<b>LATITUDE = 39°59'06.36" (39.985100)</b>	<b>LATITUDE = 39°57'28.20" (39.957833)</b>
<b>LONGITUDE = 104°55'59.30" (104.933139)</b>	<b>LONGITUDE = 104°55'42.79" (104.928553)</b>	<b>LONGITUDE = 104°55'42.97" (104.928603)</b>

## BASIS OF BEARINGS

### BASIS OF BEARINGS

#### BASIS OF BEARINGS IS A G.P.S. OBSERVATION

### BASIS OF ELEVATION

USGS COOPERATIVE BASE NETWORK CONTROL STATION, DESIGNATION "JR 53 5026".  
NGS DATA SHEET LISTS THE NAVD 88 ELEVATION AS BEING 5028 FEET.



**UELS, LLC**  
Corporate Office \* 85 South 200 East  
Vernal, UT 84078 \* (435) 789-1017



**CERTIFICATE**

THIS IS TO CERTIFY THAT THE ABOVE PLAN WAS PREPARED FROM FIELD NOTES OF ACTUAL SURVEYS MADE BY ME OR UNDER MY SUPERVISION, AND THAT THE SAME ARE TRUE AND CORRECT TO THE BEST OF MY KNOWLEDGE AND BELIEF.

REGISTERED LAND SURVEYOR  
REGISTRATION NO. 28285  
STATE OF COLORADO

STATE OF COLORADO 10-26-16

REV: 3 10-17-16 M.F.D. (SL, EP, TBH &amp; NAME CHANGE)

**GREAT WESTERN OPERATING COMPANY**

**B-FARM LD 18-393HN  
NE 1/4 NW 1/4, SECTION 7, T1S, R67W, 6th P.M.  
ADAMS COUNTY, COLORADO**

<b>SURVEYED BY</b>	DALLAS NIELSEN, G.W.	03-24-16	<b>SCALE</b>
<b>DRAWN BY</b>	M.F.D.	03-31-16	1" = 1000'

### WELL LOCATION PLAT