



**Company** Anadarko  
**Well** Dechant 19-1  
**Field** Wattenburg  
**County** Weld  
**State** Colorado

**Comp.** Anadarko  
**Well** Dechant 19-1  
**Field** Wattenburg  
**Co.** Weld  
**State** Colorado

**Location:** API #: 0512332802  
 Lat: 40.16600  
 Long: -104.61250  
**SEC** TWP RGE  
 Permanent Datum G.L. Elevation  
 Log Measured From K.B. Above Perm. Datum  
 Drilling Measured From K.B. G.L. Elevation

Date of Service	31-JUL-2017	31-JUL-2017	
Run Number	One	Two	
Depth Driller or PBTD	7494'	7494'	
Depth Logger	7512'	7512'	
Bottom Log Interval	300'	300'	
Top Log Interval	Surface	Surface	
Open Hole Size	7.825	7.825"	
Type Fluid	Water	Water	
Fluid Level	Surface	Surface	
Fluid Density	8.2 lb/gal	8.2 lb/gal	
Max. Recorded Temperature	N/A	N/A	
Max. Wellhead Pressure	0 psi	300 psi	
Wellhead Connection	N/A	N/A	
Estimated Cement Top	64'	64'	
Unit Number	P-75	P-75	
Wireline Size	9/32"	9/32"	
Location	Ft. Morgan, CO	Ft. Morgan, CO	
Recorded By	Clint McCollough	Clint McCollough	
Witnessed By	Brandon Tracey	Brandon Tracey	
Tubing Record	Size 4.5"	WFt 11.60#	Top Surface
Surface Casing			Bottom 7494'
Production Casing			
Liner Record			

<<< Fold Here >>>

All interpretations are opinions based on inferences from electrical or other measurements and Pioneer Wireline Services, LLC cannot and does not guarantee the accuracy or correctness of any interpretation, and Pioneer Wireline Services, LLC will not be liable or responsible for any loss, costs, damages, or expenses incurred or sustained by anyone resulting from any interpretation made by any of our officers, agents or employees.

**Comments**

N/A DENOTES NOT AVAILABLE OR NON-APPLICABLE.  
 First pass 0 psi  
 Second pass 300 psi

**THANK YOU FOR USING PIONEER ENERGY SERVICES!**

Your Pioneer Energy Services Crew	Tool Data - Services	Serial Number
Engineer: C. McCollough Operator: G. Soto Operator: G. Davis Operator:	FW-130433 FW-130433	

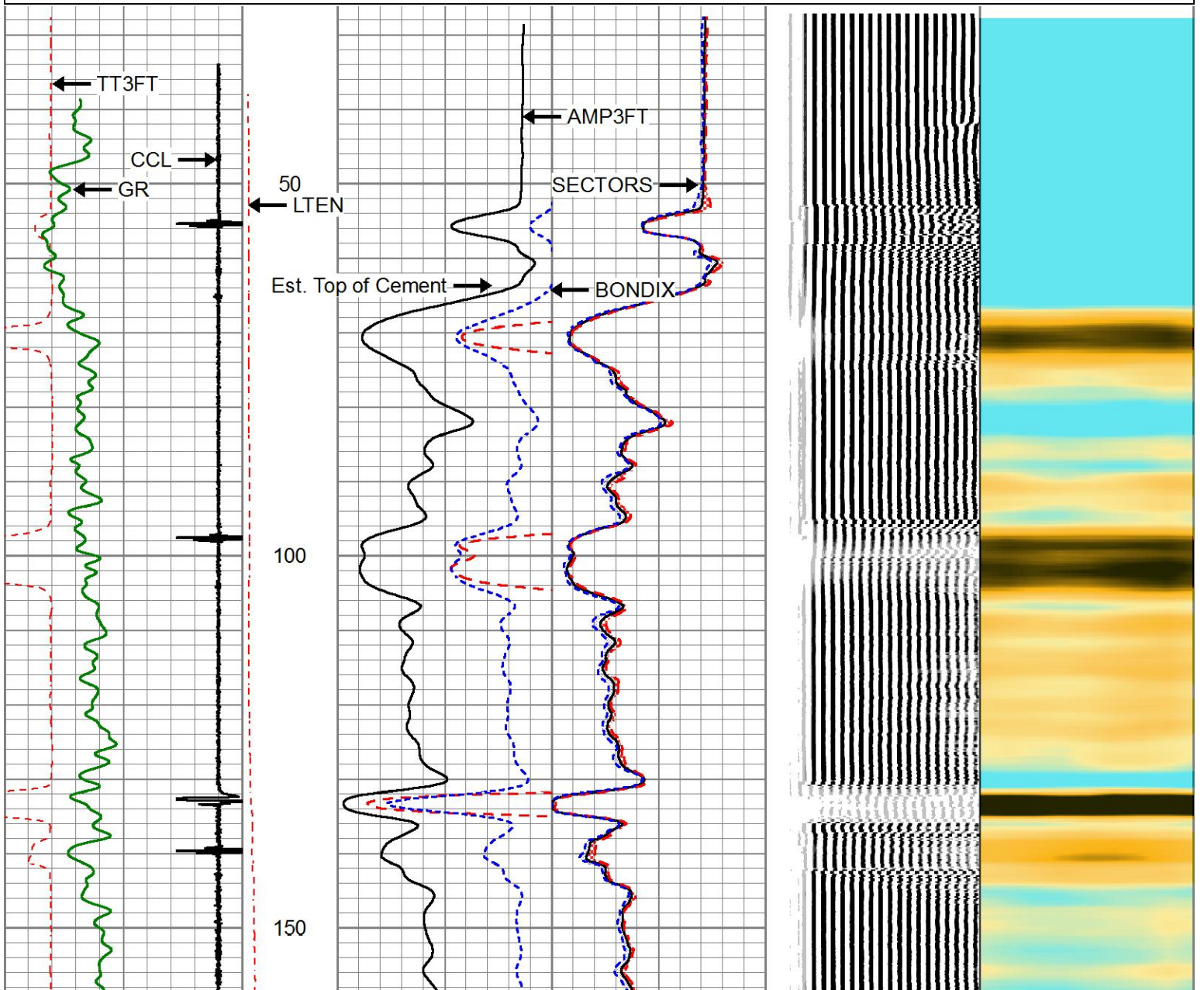
Operator	Offset (ft)	Substrate	Description	Length (ft)	O.D. (in)	Weight (lb)
----------	-------------	-----------	-------------	-------------	-----------	-------------

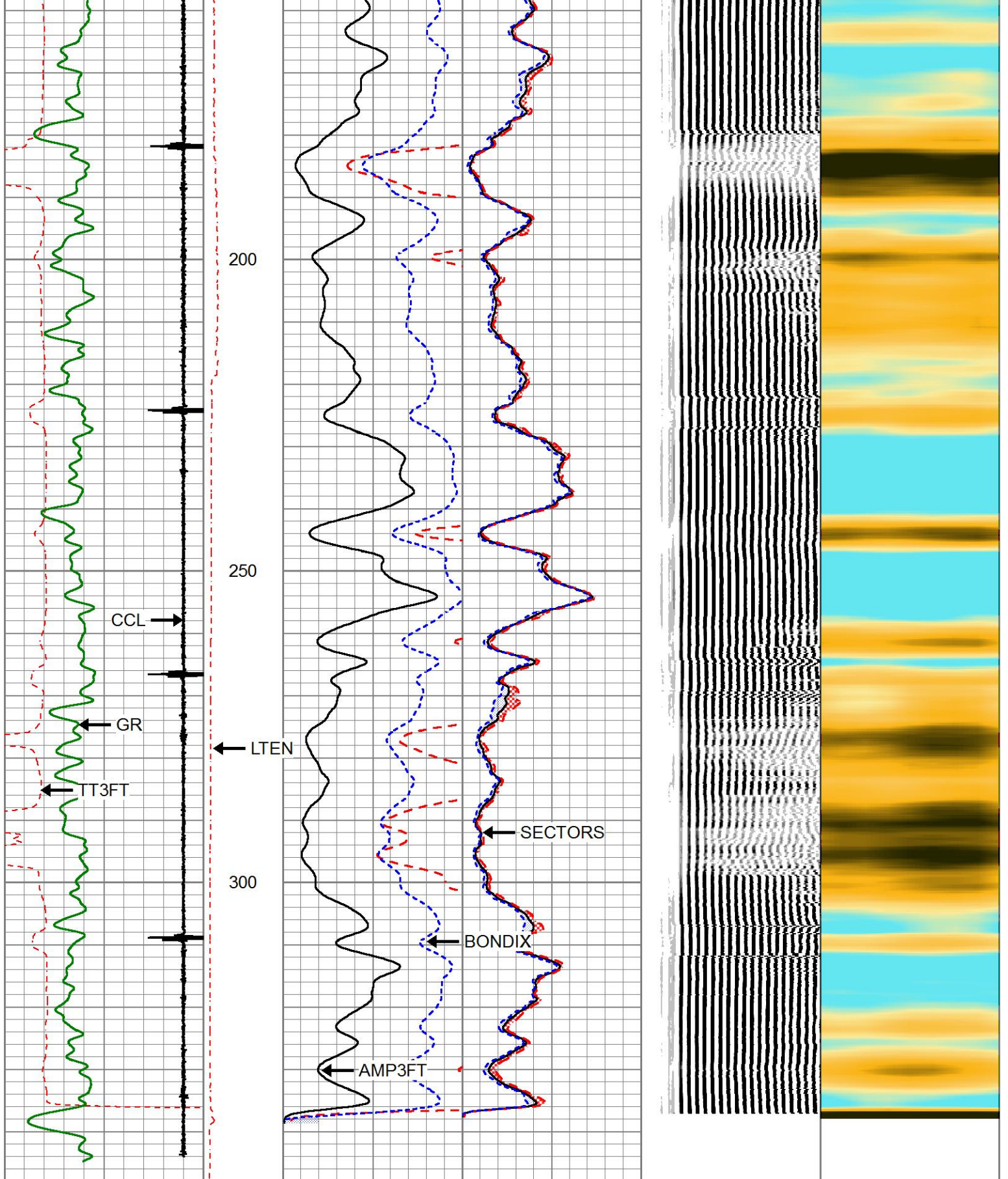
Sensor	Offset (ft)	Schematic	Description	Length (ft)	O.D. (in)	Weight (lb)	
			Cable Head-Titan 143 1 7/16" Titan Cable Head	1.03	1.43	2.00	
			Centralizer-275 Probe 2 3/4" Probe Adjustable Spring Centralizer	2.88	2.75	15.00	
			SCBL-275 Probe (Probe-275) Probe Radii Bond Tool	8.75	2.75	90.00	
WVFS8	11.88						
WVFS7	11.88						
WVFS6	11.88						
WVFS5	11.88						
WVFS4	11.88						
WVFS3	11.88						
WVFS2	11.88						
WVFS1	11.88						
WVFCAL	11.88						
WVF3FT	11.88						
WVF5FT	10.88						
HEADVOLT	7.69						
			Centralizer-275 Probe 2 3/4" Probe Adjustable Spring Centralizer	2.88	2.75	15.00	
CCL	3.91						
			GR_CCL-275 Probe GR-CCL Corrosion Probe 2 3/4" Gamma Ray / CCL Corrosion Digital	4.54	2.75	60.00	
GR	1.17						
			Bullnose-Titan GO Pin Pressure Cap	0.27	1.38	1.00	

Dataset: 2207511.db: field/well/run1/pass11  
 Total length: 20.34 ft  
 Total weight: 183.00 lb  
 O.D.: 2.75 in

Database File 2207511.db  
 Dataset Pathname pass11  
 Presentation Format pinr\_scb1  
 Dataset Creation Mon Jul 31 19:19:29 2017  
 Charted by Depth in Feet scaled 1:240

3' Travel Time	Line Tension	3' Amplitude (mV)	Sector Amplitude Average	200	VDL	1200	1	Sector Map	8
280 (usec)	0 (12000)	0 100	0 150				10		60
-9 Collar Locator		3' Amplified Amplitude X 5	Sector Amplitude Maximum						
Gamma Ray		0 (mV)	0 20						
0 (GAPI)		1 Bond Index	0 0						
			Sector Amplitude Minimum						
			0 150						





3' Travel Time			Line Tension	3' Amplitude (mV)		Sector Amplitude Average		200	VDL	1200	1	Sector Map	8
280	(usec)	180		0	100	0	150					10	60
-9	Collar Locator	1	0 (12000)	3' Amplified Amplitude X 5 (mV)		Sector Amplitude Maximum							
0	Gamma Ray (GAPI)	150		0	20	0	150						
			1	Bond Index	0	0	150						

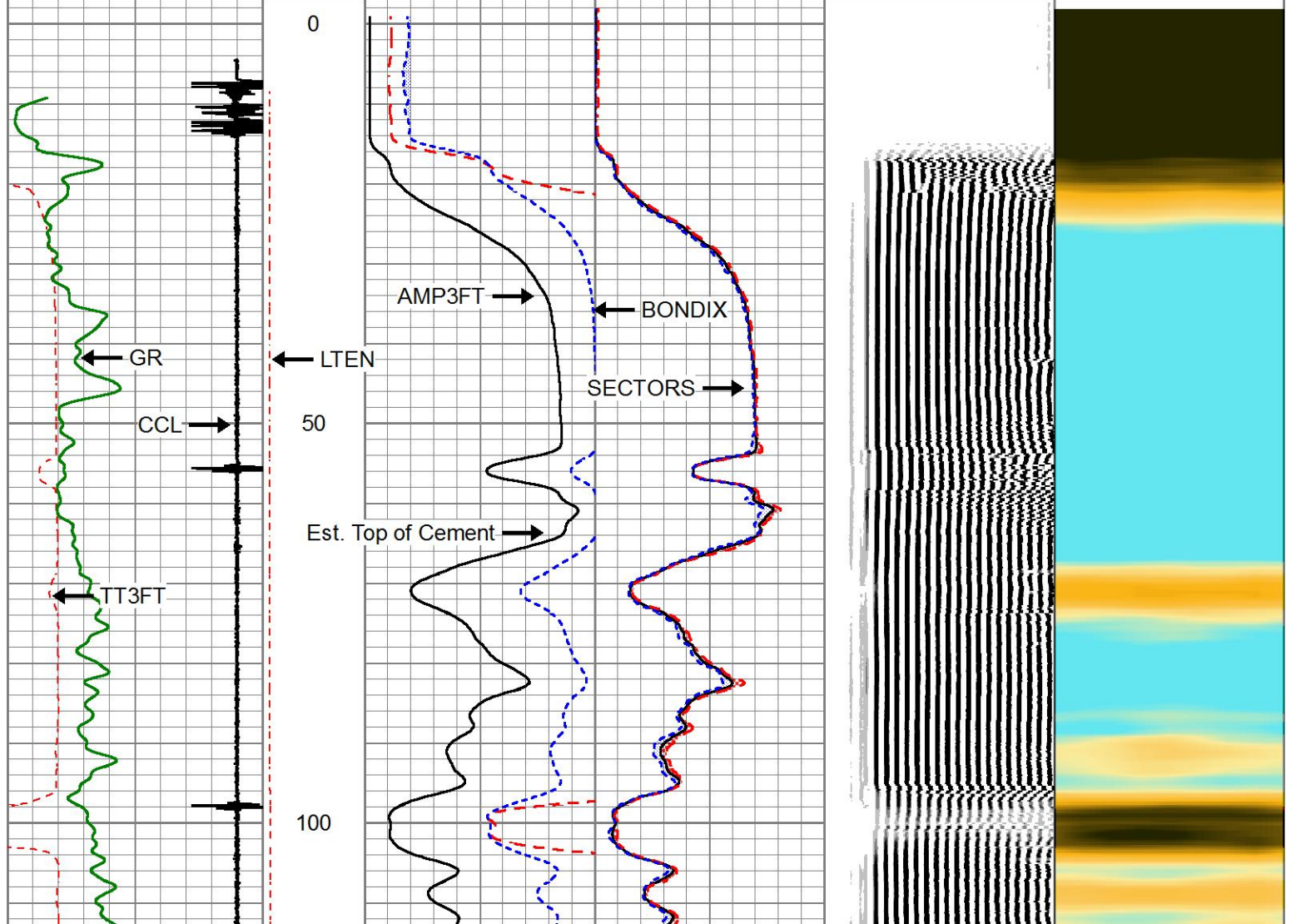
Sector  
Amplitude Minimum  
0 150

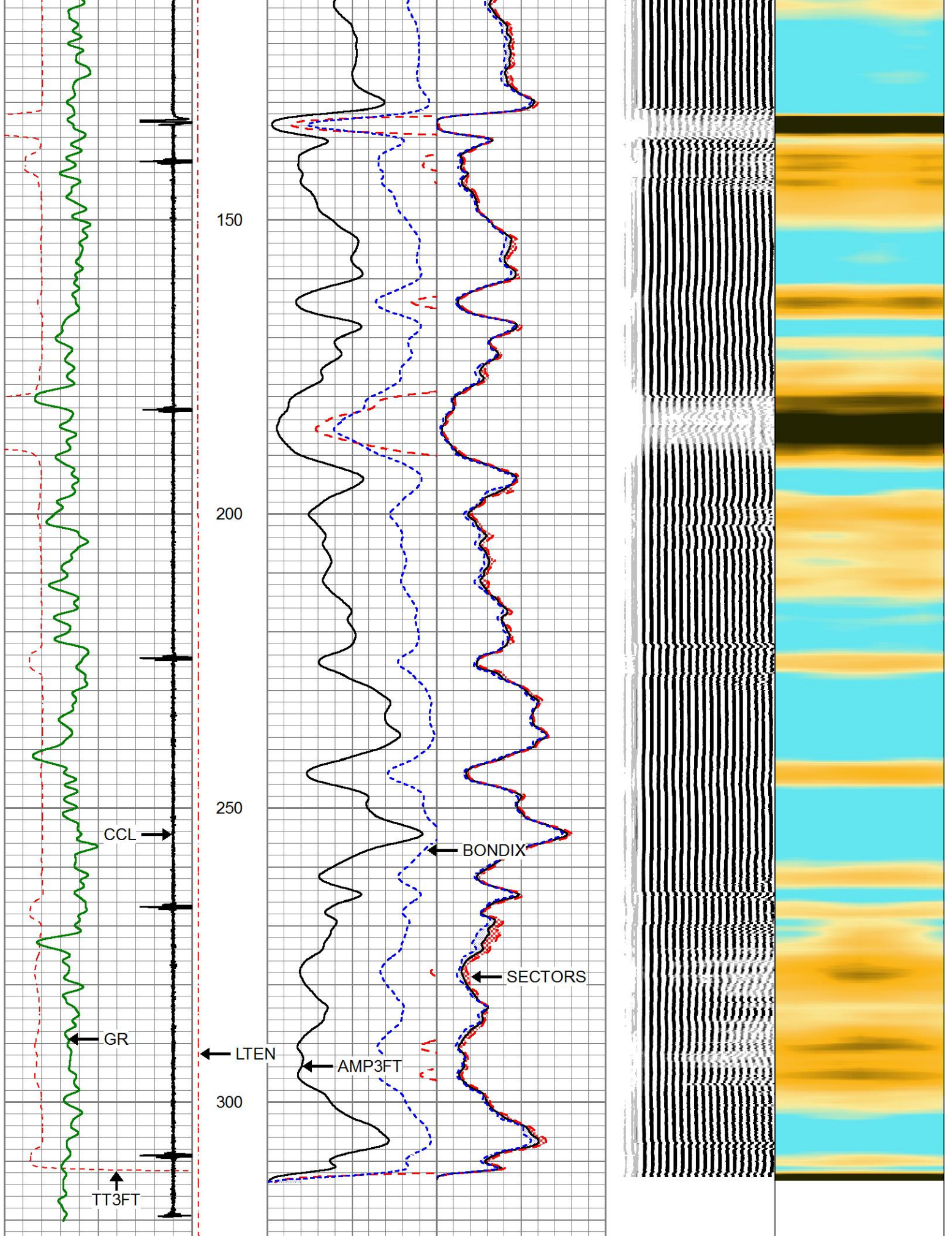


Main Pass 0 psi

Database File 2207511.db  
 Dataset Pathname pass10  
 Presentation Format pinr\_scb1  
 Dataset Creation Mon Jul 31 19:09:27 2017  
 Charted by Depth in Feet scaled 1:240

3' Travel Time 280 (usec) 180	Line Tension 0 (12000)	3' Amplitude (mV) 100	Sector Amplitude Average	200	VDL	1200	1	Sector Map	8
-9 Collar Locator 1		3' Amplified Amplitude X 5	0 150				10		60
Gamma Ray (GAPI) 150		0 (mV) 20	Sector Amplitude Maximum						
		1 Bond Index 0	Sector Amplitude Minimum	0 150					





3' Travel Time

Line Tension

3' Amplitude (mV)

Sector Amplitude Average

200 VDL 1200

1 Sector Map 8  
10 60

