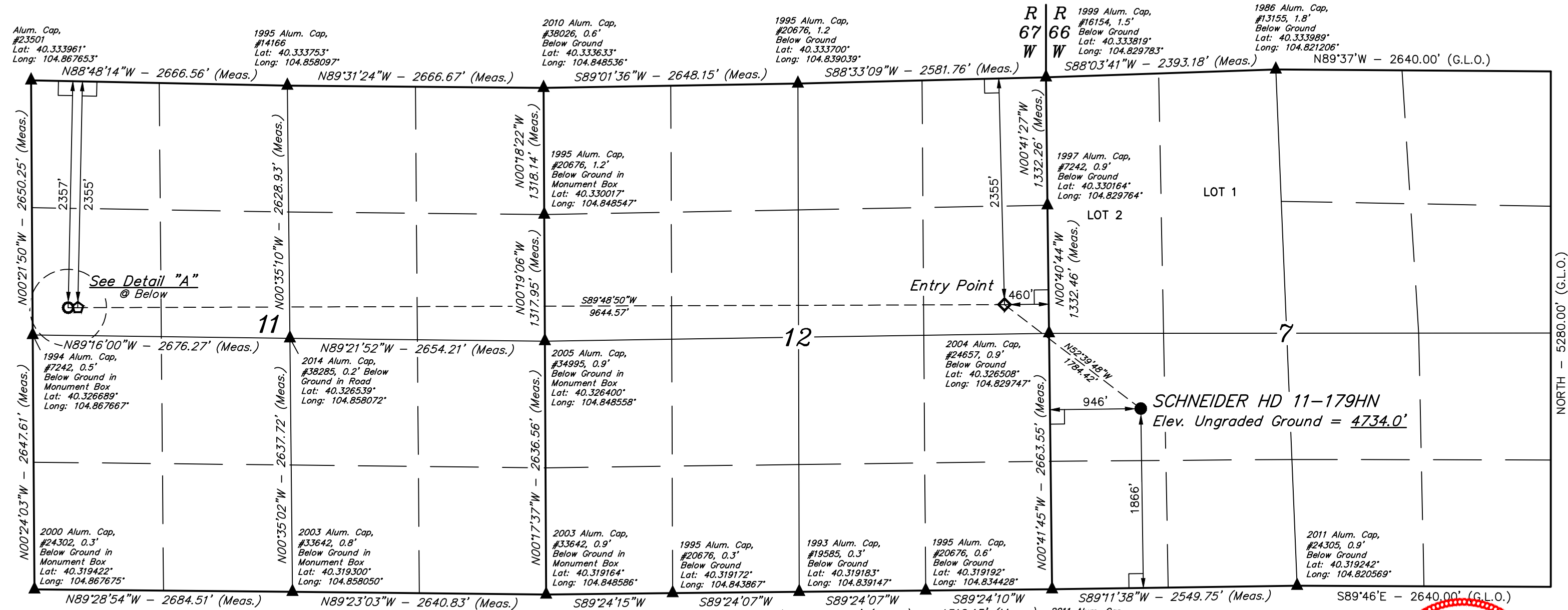


T4N, R66W, 6th P.M.



- LEGEND:**
- 90° SYMBOL
  - PROPOSED WELLHEAD.
  - ENTRY POINT.
  - TARGET BOTTOM HOLE.
  - BTM PERF.
  - SECTION CORNERS LOCATED. (NAD 83)

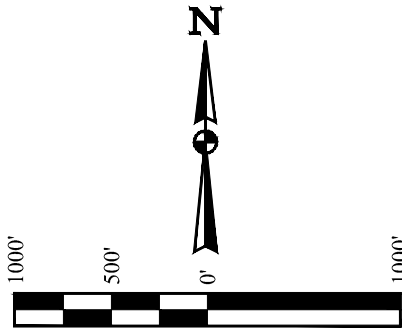
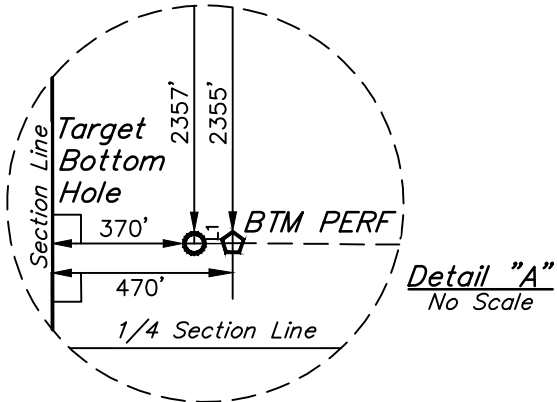
LINE TABLE		
LINE	DIRECTION	LENGTH
L1	S89°48'50"W	100.00'

**BASIS OF BEARINGS**  
BASIS OF BEARINGS IS A G.P.S. OBSERVATION

**BASIS OF ELEVATION**  
USGS COOPERATIVE BASE NETWORK CONTROL STATION, DESIGNATION "VERMILYEA". NGS DATA SHEET LISTS THE NAVD 88 ELEVATION AS BEING 5026 FEET.



**UELS, LLC**  
Corporate Office \* 85 South 200 East  
Vernal, UT 84078 \* (435) 789-1017



PDOP = 1.4

NAD 83 (SURFACE LOCATION)	NAD 83 (ENTRY POINT)	NAD 83 (BTM PERF)	NAD 83 (TARGET BOTTOM HOLE)
LATITUDE = 40°19'27.60" (40.324333)	LATITUDE = 40°19'38.41" (40.327336)	LATITUDE = 40°19'38.85" (40.327458)	LATITUDE = 40°19'38.86" (40.327461)
LONGITUDE = 104°49'34.84" (104.826344)	LONGITUDE = 104°49'53.04" (104.831400)	LONGITUDE = 104°51'57.53" (104.865981)	LONGITUDE = 104°51'58.82" (104.866339)
NAD 27 (SURFACE LOCATION)	NAD 27 (ENTRY POINT)	NAD 27 (BTM PERF)	NAD 27 (TARGET BOTTOM HOLE)
LATITUDE = 40°19'27.67" (40.324353)	LATITUDE = 40°19'38.47" (40.327353)	LATITUDE = 40°19'38.92" (40.327478)	LATITUDE = 40°19'38.92" (40.327478)
LONGITUDE = 104°49'32.95" (104.825819)	LONGITUDE = 104°49'51.15" (104.830875)	LONGITUDE = 104°51'55.63" (104.865453)	LONGITUDE = 104°51'56.92" (104.865811)

**CERTIFICATE**  
THIS IS TO CERTIFY THAT THE ABOVE PLAT WAS PREPARED FROM FIELD NOTES OF ACTUAL SURVEYS MADE BY ME OR UNDER MY SUPERVISION, AND THAT THE SAME ARE TRUE AND CORRECT TO THE BEST OF MY KNOWLEDGE AND BELIEF.

**REGISTERED LAND SURVEYOR**  
REGISTRATION NO. 28285  
STATE OF COLORADO  
Jared Christopher, C.T.

REV: 3 05-04-17 K.B. (SL, TBH MOVE & BTM PERF ADD)

**GREAT WESTERN OPERATING COMPANY**

**SCHNEIDER HD 11-179HN**  
NW 1/4 SW 1/4, SECTION 7, T4N, R66W, 6th P.M.  
WELD COUNTY, COLORADO

SURVEYED BY: JARED CHRISTOPHER, C.T. DATE: 05-01-17

DRAWN BY: J.W. DATE DRAWN: 08-18-14

SCALE: 1" = 1000'

**WELL LOCATION PLAT**