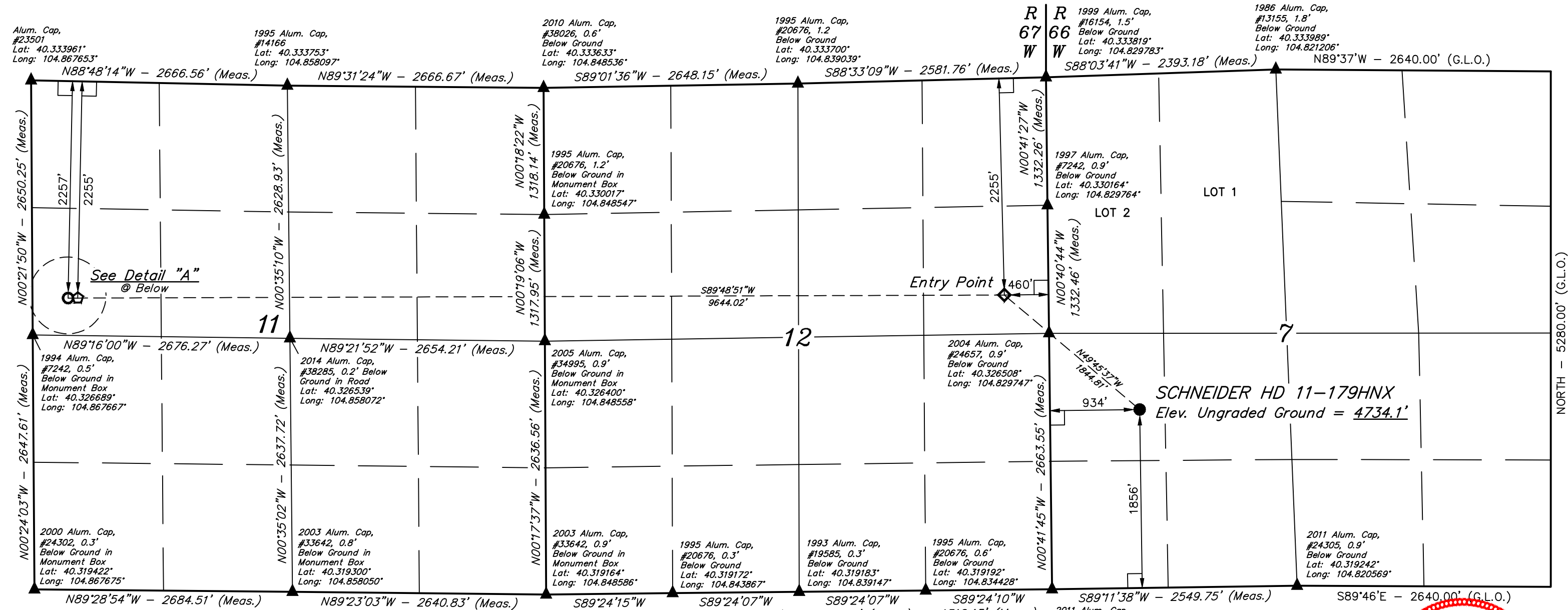


T4N, R66W, 6th P.M.



LEGEND:

- 90° SYMBOL
- PROPOSED WELLHEAD.
- ENTRY POINT.
- TARGET BOTTOM HOLE.
- BTM PERF.
- SECTION CORNERS LOCATED. (NAD 83)

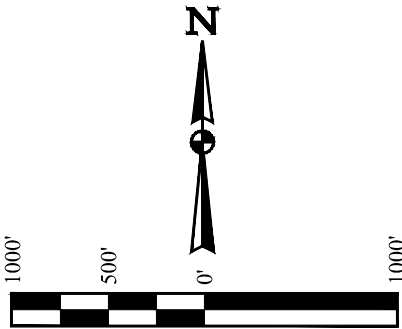
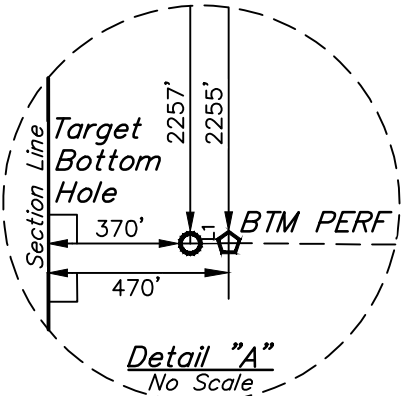
LINE TABLE		
LINE	DIRECTION	LENGTH
L1	S89°48'51"W	100.00'

BASIS OF BEARINGS
BASIS OF BEARINGS IS A G.P.S. OBSERVATION

BASIS OF ELEVATION
USGS COOPERATIVE BASE NETWORK CONTROL STATION, DESIGNATION "VERMILYEA". NGS DATA SHEET LISTS THE NAVD 88 ELEVATION AS BEING 5026 FEET.



UELS, LLC
Corporate Office * 85 South 200 East
Vernal, UT 84078 * (435) 789-1017



PDOP = 1.4

NAD 83 (SURFACE LOCATION)	NAD 83 (ENTRY POINT)	NAD 83 (BTM PERF)	NAD 83 (TARGET BOTTOM HOLE)
LATITUDE = 40°19'27.51" (40.324308)	LATITUDE = 40°19'39.40" (40.327611)	LATITUDE = 40°19'39.84" (40.327733)	LATITUDE = 40°19'39.85" (40.327736)
LONGITUDE = 104°49'35.00" (104.826389)	LONGITUDE = 104°49'53.05" (104.831403)	LONGITUDE = 104°51'57.53" (104.865981)	LONGITUDE = 104°51'58.82" (104.866339)
NAD 27 (SURFACE LOCATION)	NAD 27 (ENTRY POINT)	NAD 27 (BTM PERF)	NAD 27 (TARGET BOTTOM HOLE)
LATITUDE = 40°19'27.58" (40.324328)	LATITUDE = 40°19'39.46" (40.327628)	LATITUDE = 40°19'39.91" (40.327753)	LATITUDE = 40°19'39.91" (40.327753)
LONGITUDE = 104°49'33.10" (104.825861)	LONGITUDE = 104°49'51.15" (104.830875)	LONGITUDE = 104°51'55.63" (104.865453)	LONGITUDE = 104°51'56.92" (104.865811)

CERTIFICATE
THIS IS TO CERTIFY THAT THE ABOVE PLAT WAS PREPARED FROM FIELD NOTES OF ACTUAL SURVEYS MADE BY ME OR UNDER MY SUPERVISION AND THAT THE SAME ARE TRUE AND CORRECT TO THE BEST OF MY KNOWLEDGE AND BELIEF.

REGISTERED LAND SURVEYOR
REGISTRATION NO. 28285
STATE OF COLORADO
JARED CHRISTOPHER

REV: 1 05-04-17 K.B. (SL, TBH MOVE & BTM PERF ADD)

GREAT WESTERN OPERATING COMPANY

SCHNEIDER HD 11-179HNX
NW 1/4 SW 1/4, SECTION 7, T4N, R66W, 6th P.M.
WELD COUNTY, COLORADO

SURVEYED BY: JARED CHRISTOPHER, C.T. DATE: 05-01-17
DRAWN BY: L.C.S. DATE DRAWN: 12-19-16
SCALE: 1" = 1000'

WELL LOCATION PLAT