

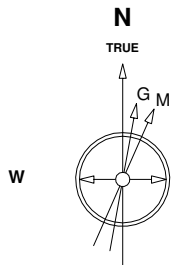
Great Western Operating Company, LLC

Location Colorado
Field Wattenburg
Installation Schneider - North

Slot Slot 12 - Schneider HD 11-142HC
Well Schneider HD 11-142HC
Wellbore Schneider HD 11-142HC (PWB)

Created by admin
Date plotted 28-Jul-2017

Plot reference is Schneider HD 11-142HC (PWB).
Ref wellpath is Schneider HD 11-142HC (PWP#1).
Coordinates are in Feet reference Slot 12 - Schneider HD 11-142HC.
True Vertical Depths are reference Rig Datum.
Measured Depths are reference Rig Datum.
Rig Datum: Planned Datum #1
Rig Datum to Mean Sea Level: 4752.40 ft.
Plot North is aligned to TRUE North.



Scale 1 cm = 400 ft

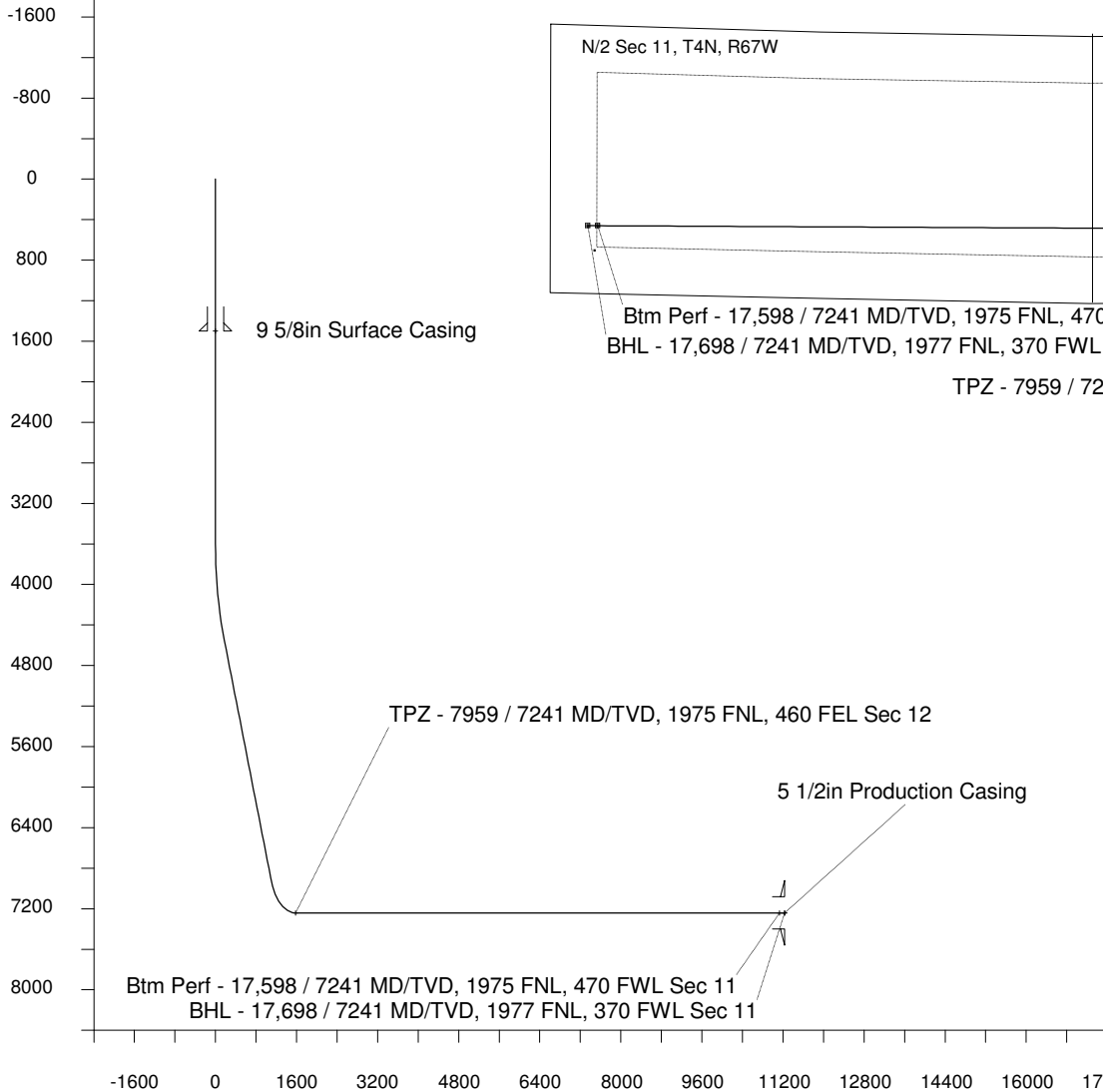
East (Feet) ->

-14400 -13600 -12800 -12000 -11200 -10400 -9600 -8800 -8000 -7200 -6400 -5600 -4800 -4000 -3200 -2400 -1600 -800 0 800

29-Sep-2014
IGRF Model [1900.0-2020.0] Dip: 66.86 deg Field: 52660.1 nT
Lat: N40 19 26.4108 Long: W104 49 36.8184 Elev: 4732.40 ft
Magnetic North is 8.53 deg East of TRUE North
To correct azimuth from Magnetic to TRUE add 8.53 deg

Scale 1 cm = 400 ft

<- True Vertical Depth (Feet)



Scale 1 cm = 800 ft

Vertical Section (Feet) ->

Azimuth 277.88 with reference 0.00 N, 0.00 E from Slot 12 - Schneider HD 11-142HC

<- North(Feet)

Scale 1 cm = 400 ft

WELL PROFILE DATA

Point	MD	Inc	Azi	TVD	North	East	deg/100ft	V. Sect
Tie on	0.00	0.00	0.00	0.00	S 0.00	W 0.00		0.00
KOP	3590.00	0.00	325.31	3590.00	S 0.00	W 0.00	0.00	0.00
End of Build	4589.95	30.00	325.31	4544.88	N 210.36	W 145.63	9.84	173.09
End of Hold	7347.58	30.00	325.31	6933.10	N 1343.96	W 930.41	0.00	1105.88
Target TPZ - ...Sec 12	7958.77	90.00	270.29	7241.00	N 1491.88	W 1387.11	39.37	1578.55
Target Btm Pe...Sec 11	17598.13	90.00	270.29	7241.00	N 1539.84	W 11026.35	0.00	11133.35
End of Turn	17600.15	90.00	270.02	7241.00	N 1539.84	W 11028.37	42.65	11135.34
T.D. & Target BHL... 11	17697.95	90.00	270.02	7241.00	N 1539.88	W 11126.17	0.00	11232.23