

LWD MEMORY LOG



Gamma Ray

Scale:

1:240 TVD

Company: Noble Energy

Well: Wells Ranch AF-07-645

Depth Reference:

Field: Weld County(Noble NAD 83 Grid)

Driller's Depth

County: Weld State: Colorado

Status:

Final Print

Surface Location:

Latitude: 040° 24' 53.856" N

Other Services:

API No: 05-123-44250-00

Longitude: 104° 20' 18.096" W

Job ID: 8645411

UTM: N/A

Directional

Permanent Datum (P.D.):

Ground Level

Elevation: 4704.00 ft

KB: N/A

Log Measured From:

Rig Floor

Above P.D.

30.00 ft

GL:

4734.00 ft

Dates

Interval Logged

Magnetic Field Reference

Date From: 2017-07-07

Azi Reference North: Grid

Dip Angle: (deg) 67.14

Date To: 2017-07-10

Total Magnetic Field Strength: (mT)

52291

Spud Date: 2017-07-06

Mag to Reference North Correction: (deg)

7.13E

Borehole Record

Casing Record

Hole Size (in)

From (ft)

To (ft)

Size (in)

Weight (lb/ft)

From (ft)

To (ft)

13.500

30.00

1952.00

9.625

36.00

30.00

1940.00

8.500

1952.00

16015.00

"These interpretations and analyses ("Interpretations") are opinions provided by Baker Hughes Oilfield Operations, Inc ("Baker Hughes"), based upon industry practice, empirical relationships, assumptions and measurements, (many of which may be provided by the customer). The Interpretations are not infallible and may be subject to different opinions. Thus, Baker Hughes does not warrant their accuracy, correctness, or completeness, or that the customer's and/or any third party's reliance on such Interpretations will accomplish any particular results. The customer assumes full responsibility for the use of the Interpretations and for decisions based thereon and the customer agrees to release, defend and indemnify Baker Hughes, its parent, subsidiaries and affiliated or related entities, and subcontractors, together with its and their officers, directors, employees, agents and invitees against, any and all claims, losses, damages, or expenses sustained by the customer or any third party arising out of reliance upon or use of the Interpretations, without regard to the cause(s) thereof, including without limitation any form of negligence on the part of Baker Hughes. Unless other contract terms have been agreed to by the parties, each party's liabilities and obligations shall be governed by Baker Hughes Incorporated's Worldwide Terms and Conditions."

Log Run Summary

Run No	Bit Run No.	Bit Size (in)	Bit Type	Bit Gauge Length (in)	Assembly Type	Logged Interval		Bit Depth Interval		Date / Time		Circ. Hours (h)
						Top	Bottom	From	To	Start Logging	End Logging	
						(ft)	(ft)	(ft)	(ft)			
1	1	8.500	PDC	3.00	AutoTrak Curve	1939.10	16001.59	1952.00	16014.49	2017-07-08 02:58	2017-07-10 11:53	52.52

Crew

Name		Arrive Wellsite	Depart Wellsite	Name		Arrive Wellsite	Depart Wellsite	Name		Arrive Wellsite	Depart Wellsite
Alberto Cova		2017-07-06	2017-07-10	Emi Iyalla		2017-07-06	2017-07-10				

Mud Properties Record

Date / Time	Run No.	Measured Depth (ft)	Mud Type	Density (ppg)	Viscosity (cP)	pH	Fluid Loss (cm3)	Oil / Water	Source	Total Chlorides (ppm)	K+ (%)
2017-07-08 04:00	1	2133.00	Oil Based Mud	9.2	11	N/A	435.6	82/18	Active Pit	19500	0.00
2017-07-08 15:00	1	5510.00	Oil Based Mud	9.1	9	N/A	120.7	84/16	Active Pit	20500	0.00
2017-07-09 04:00	1	8563.00	Oil Based Mud	9.1	11	N/A	68.1	83/17	Active Pit	21000	0.00
2017-07-09 15:00	1	11111.00	Oil Based Mud	9.1	11	N/A	54.1	83/17	Active Pit	21000	0.00
2017-07-10 04:00	1	13779.00	Oil Based Mud	9.4	15	N/A	167.7	84/16	Active Pit	20500	0.00
2017-07-10 15:00	1	16015.00	Oil Based Mud	9.5	16	N/A	149.5	84/16	Active Pit	19500	0.00

Equipment and Service Data

Run No.	Tool	Serial Number	Measurement	Sensor Offset (ft)	Bit Offset (ft)	Max O.D. (in)	Min I.D. (in)
1	ATC_SU	12536524	Near Bit VSS	5.93	6.73	7.000	4.330
1	ATC_SU	12536524	Near Bit Inclination	5.93	6.73	7.000	4.330
1	ATC_MWD	13067101	Gamma (single)	2.75	12.90	7.000	3.250
1	ATC_MWD	13067101	Directional (mag)	12.27	22.42	7.000	3.250

Service and Tool Mnemonics

Mnemonic	Name	Description
ATC_SU	ATC_SU	Auto Trak Curve Steering Unit
ATC_MWD	ATC_MWD	Auto Trak Curve MWD
ATC_LCPM	ATC_LCPM	Auto Trak Curve LCPM

Comments


- 1
- Depth measurements were obtained from a depth control system not supplied or operated by Baker Hughes. Due to the lack of control by Baker Hughes, depth calibrations and measurements could not be independently verified.
- 2
- Baker Hughes LWD run 1 utilized a 6.75 inch NaviGamma services (Gamma Ray and Directional) services behind a 8.5 inch bit and rotary steerable assembly from 1952 to 16015 feet MD (1952 to 6537 feet TVD).

Remarks

Number	Measured Depth (ft)	Hole Section (in)	Run No.	Remark
1	1952.00	8.500	1	Gamma Ray logging operations began at 1952 feet MD (1952 feet TVD) per customer request.

Curve Mnemonics

Presented Curves	Description	Units
ROPA	Depth Averaged ROP 3 ft Average	ft/h
WOBA	Weight On Bit, Average 1 ft Average	klb
GRAM	OnTrak - Gamma Ray - Apparent - Memory 0.5 ft Average	API
TCDM	Downhole Temperature	degF



Company

Well

Interval

Created

Noble Energy

Wells Ranch AF07-645

Date From: 2017-07-07 20:58:49

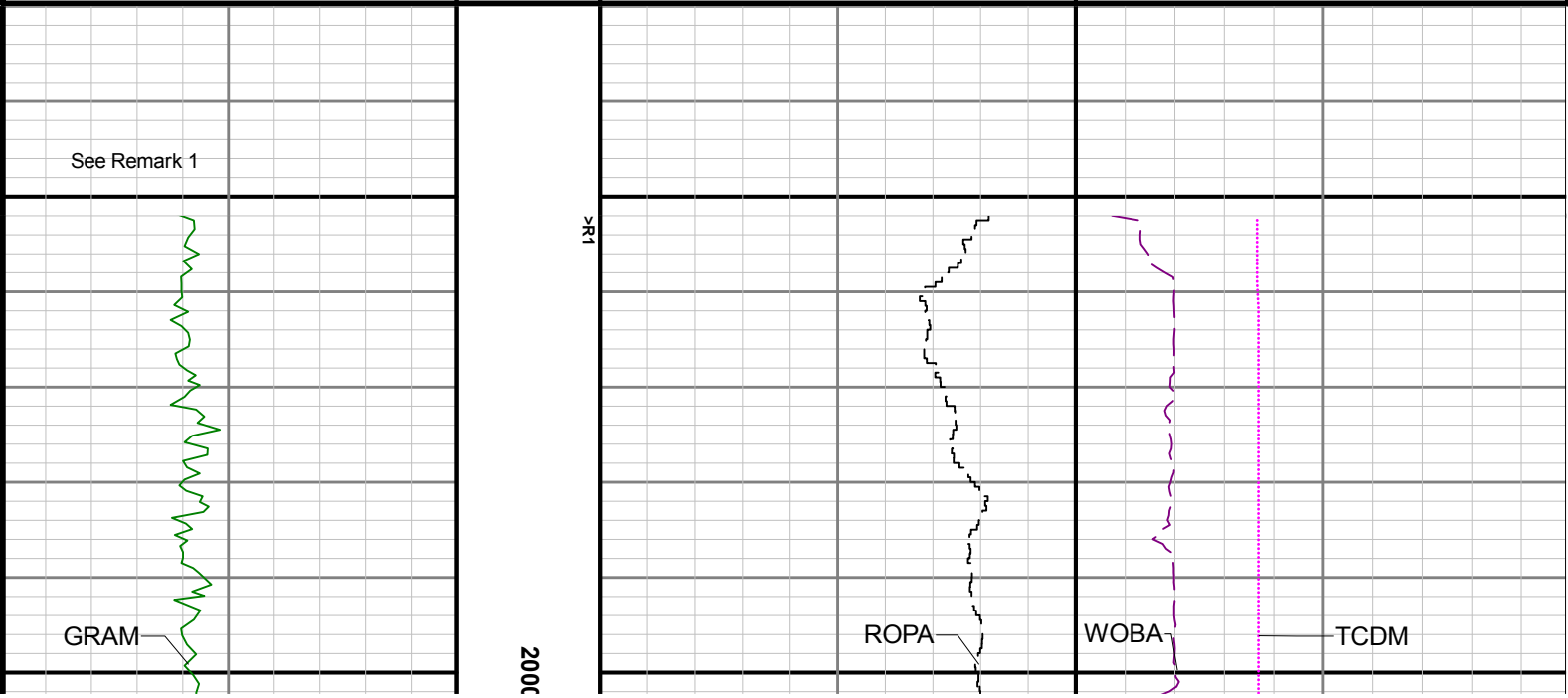
Date To: 2017-07-10 05:53:27

2017-07-11 07:47:17

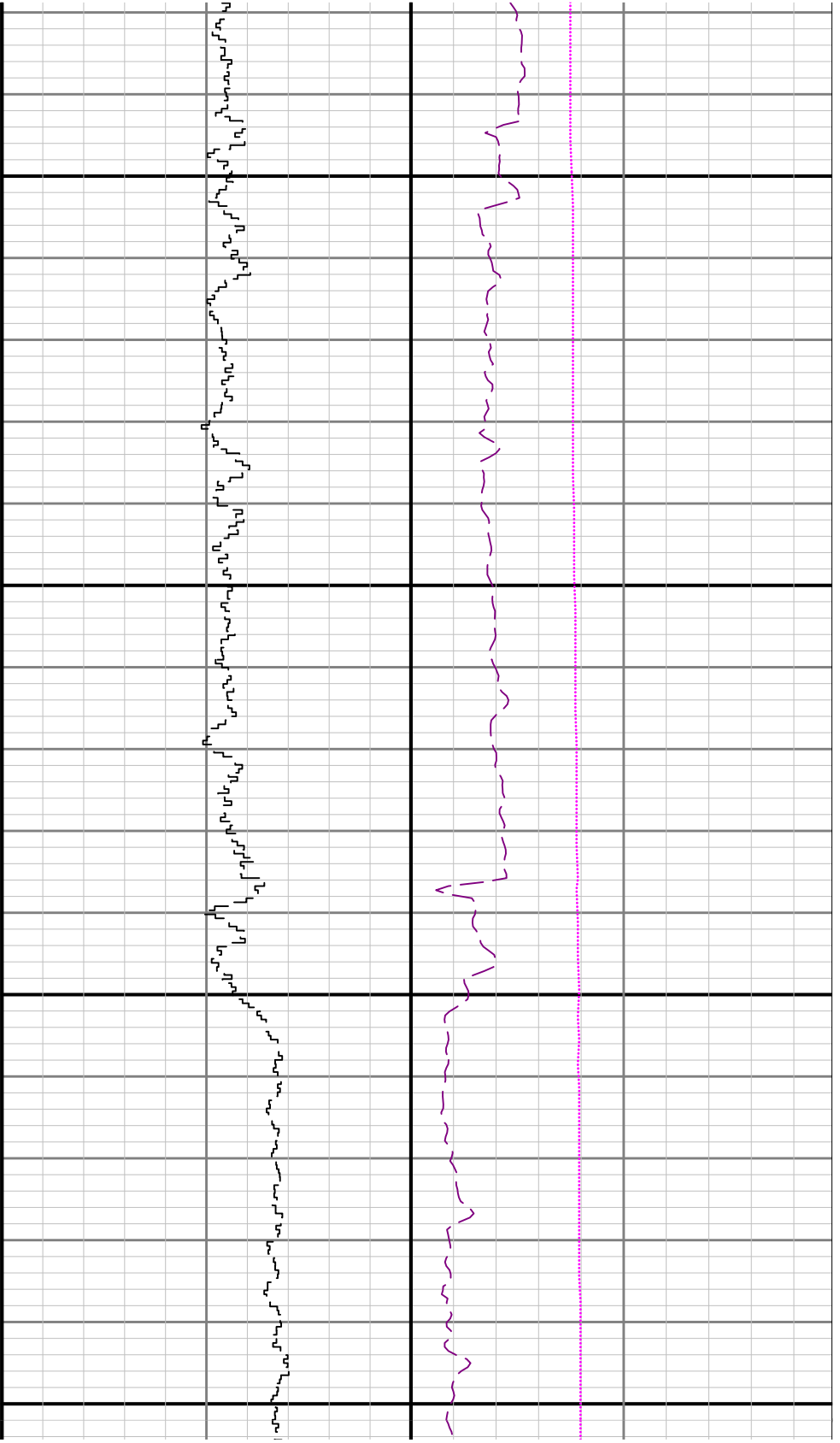
Top: 1952.00

Bottom: 16015.00

Gamma Ray - Apparent 0.5 ft Average GRAM 0 300	TVD 1:240 feet	Depth Averaged ROP 3 ft Average ROPA 1000 0 ft/h	Weight On Bit, Average 1 ft Average WOBA 0 50 klb
API			Downhole Temperature TCDM 0 300 degF

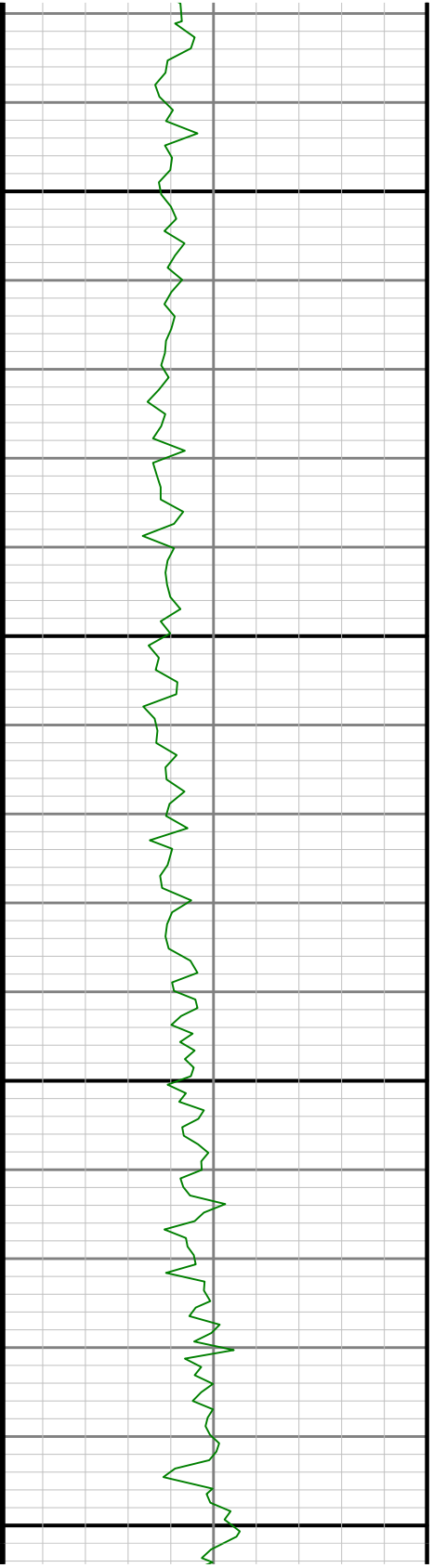


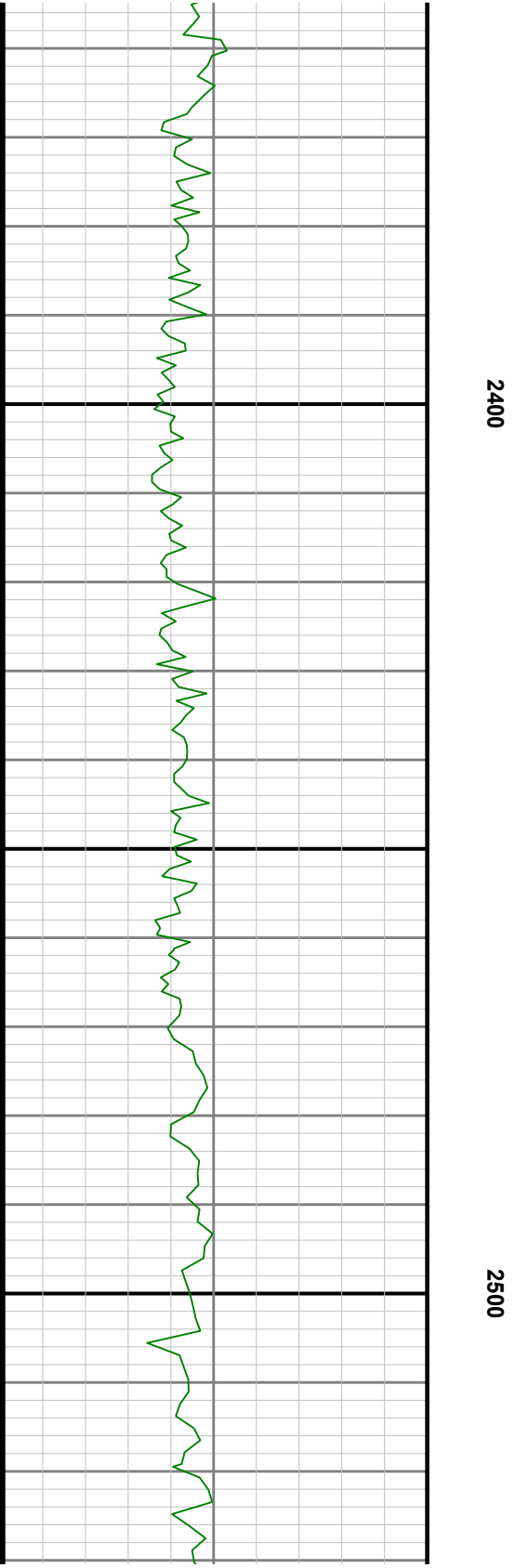
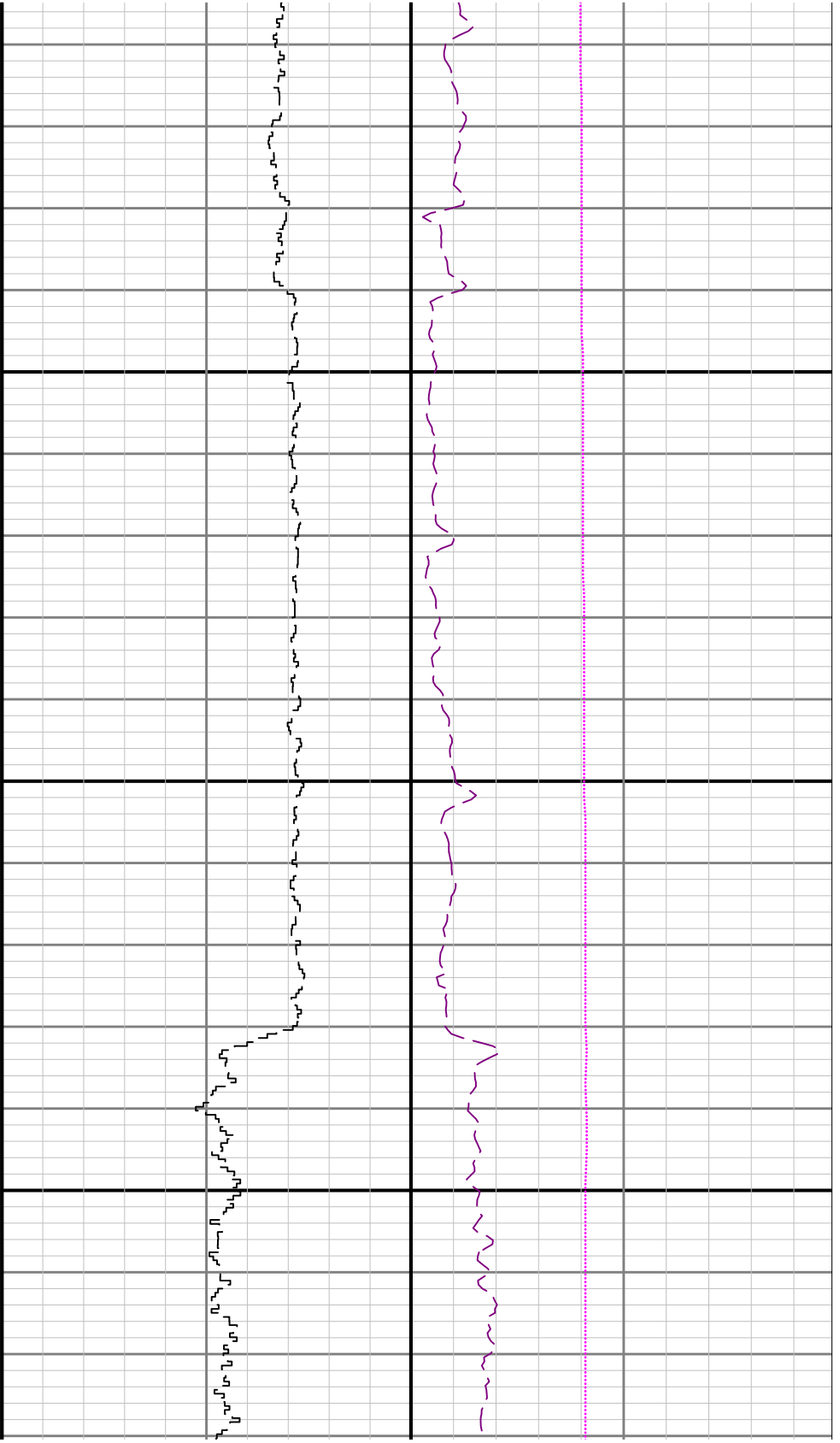


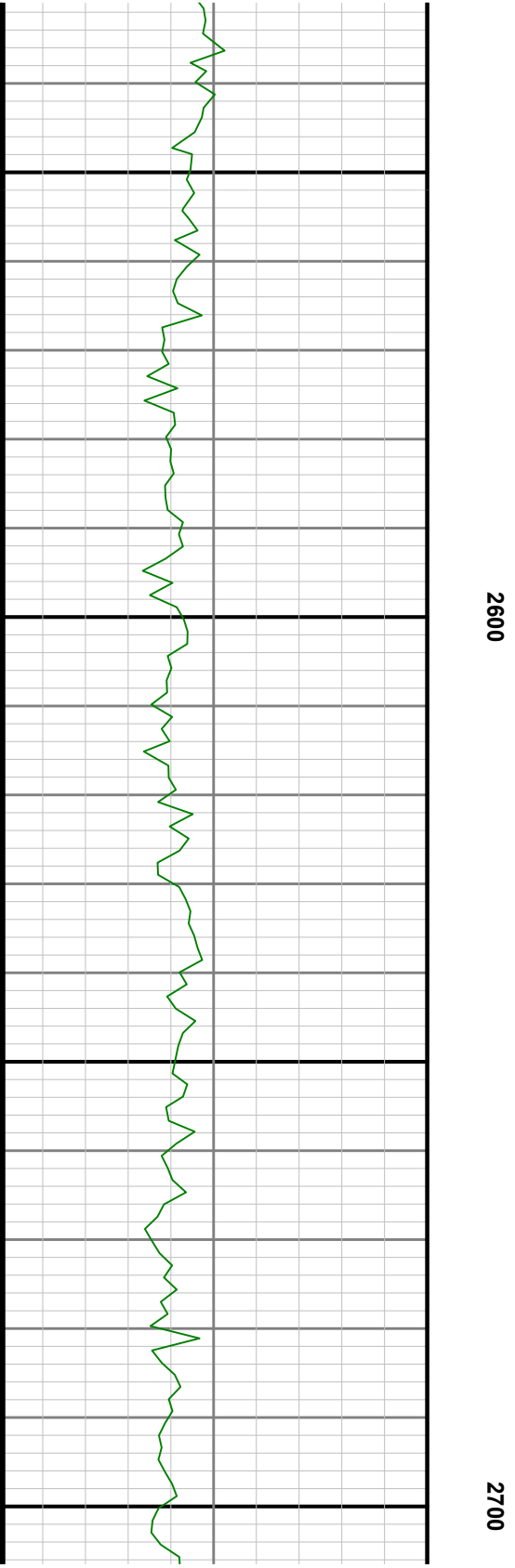
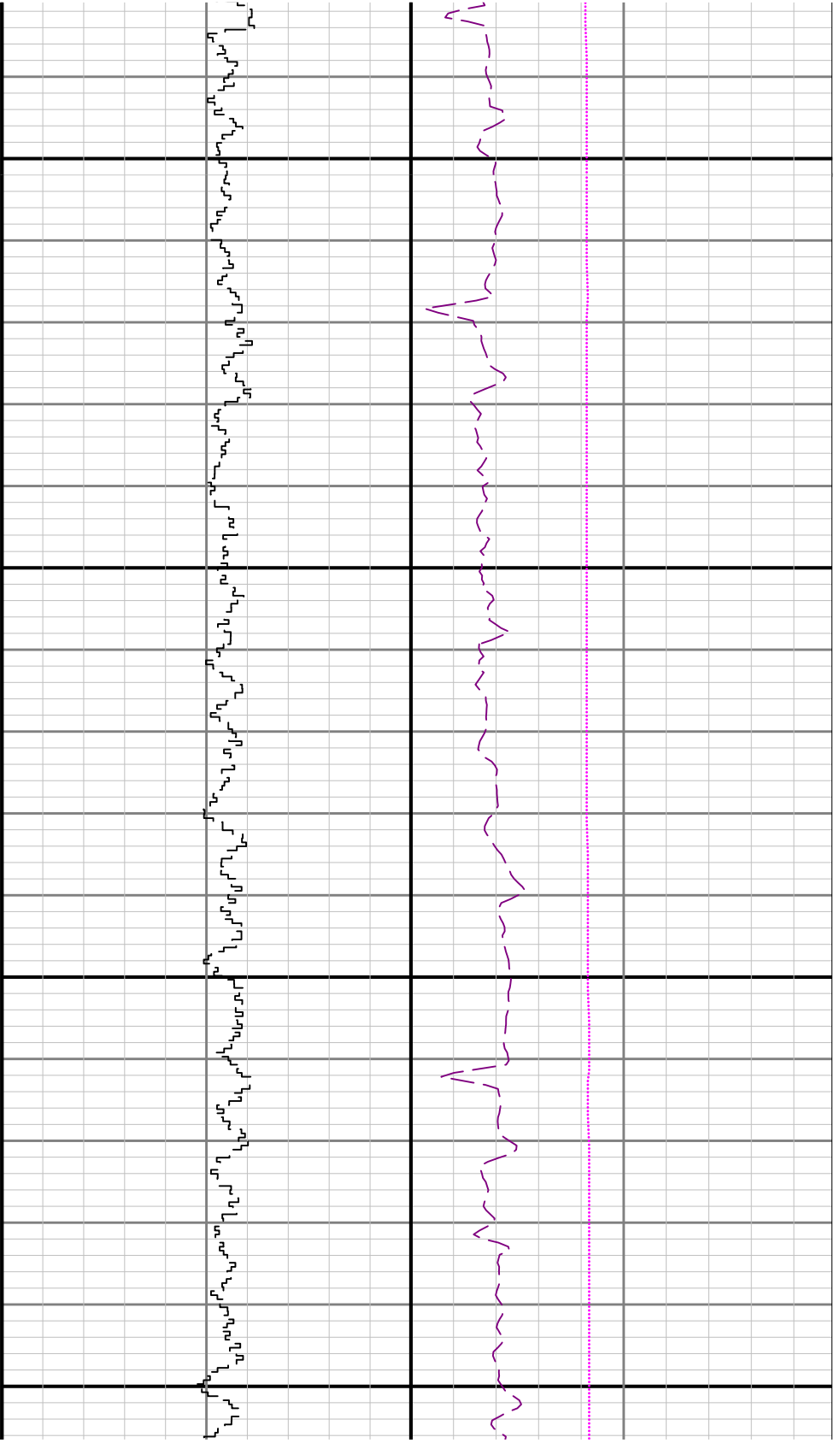


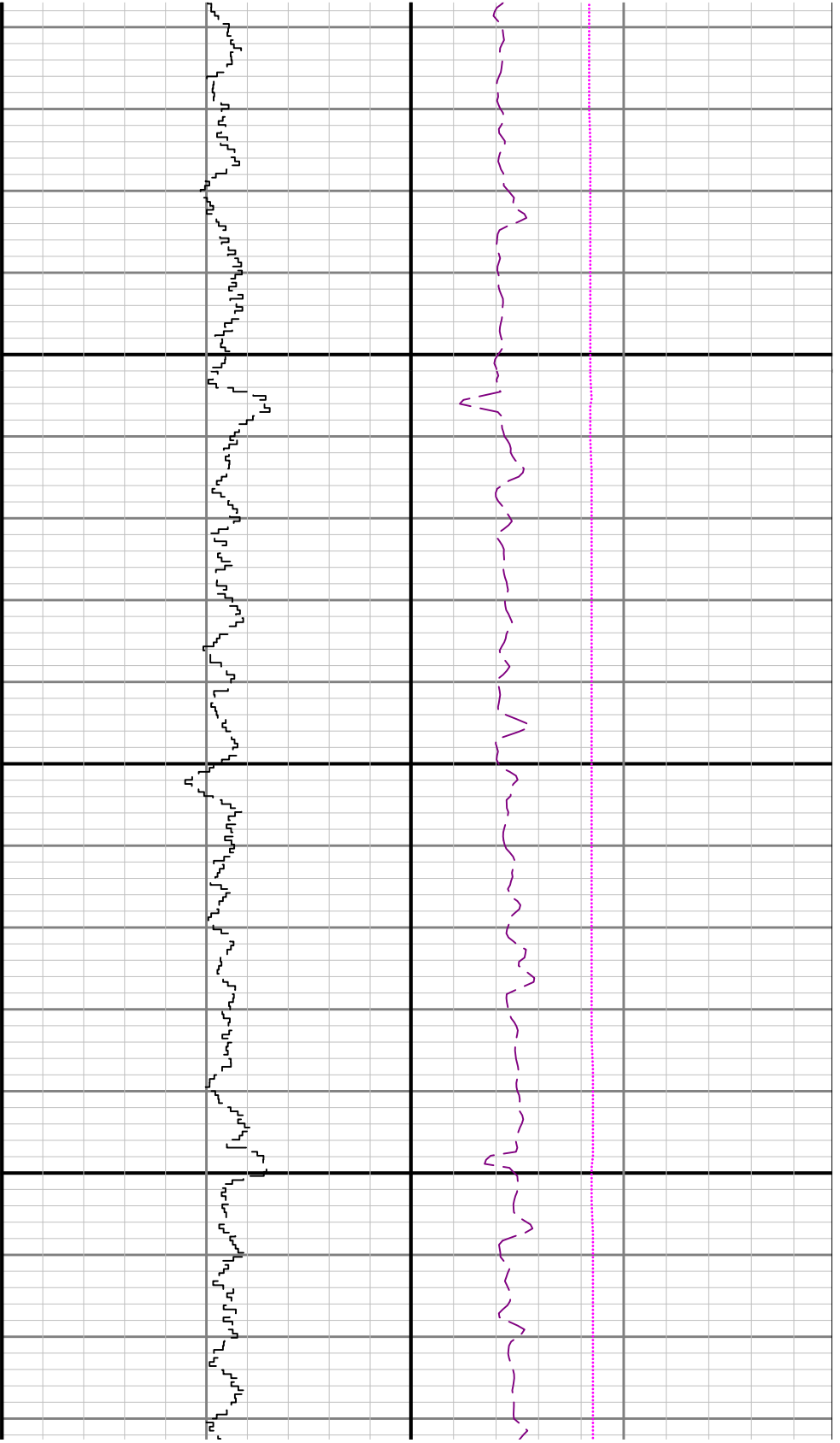
2200

2300

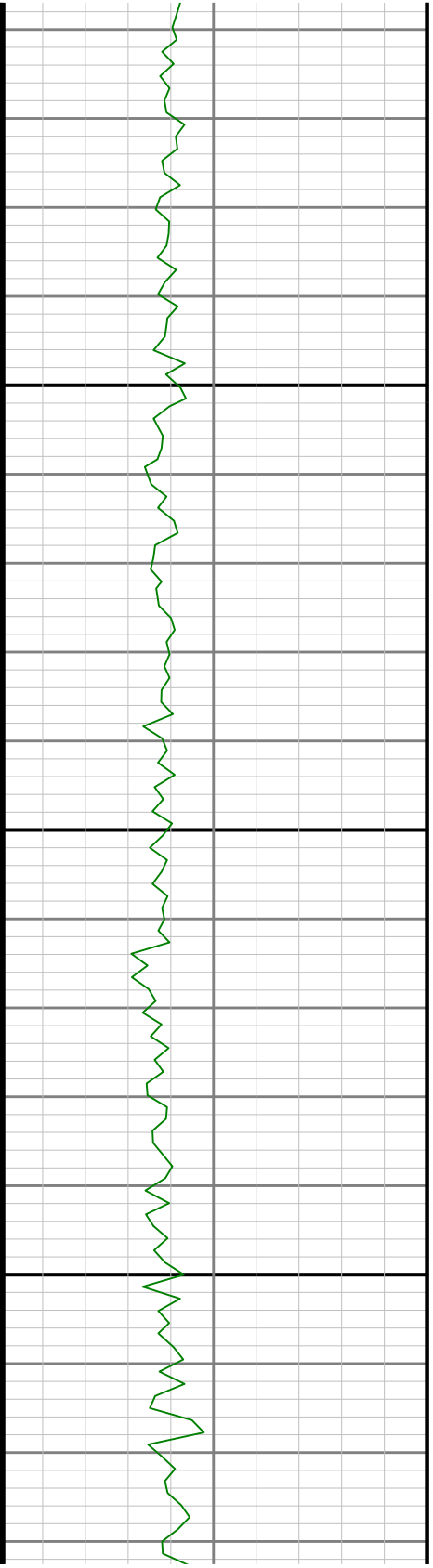




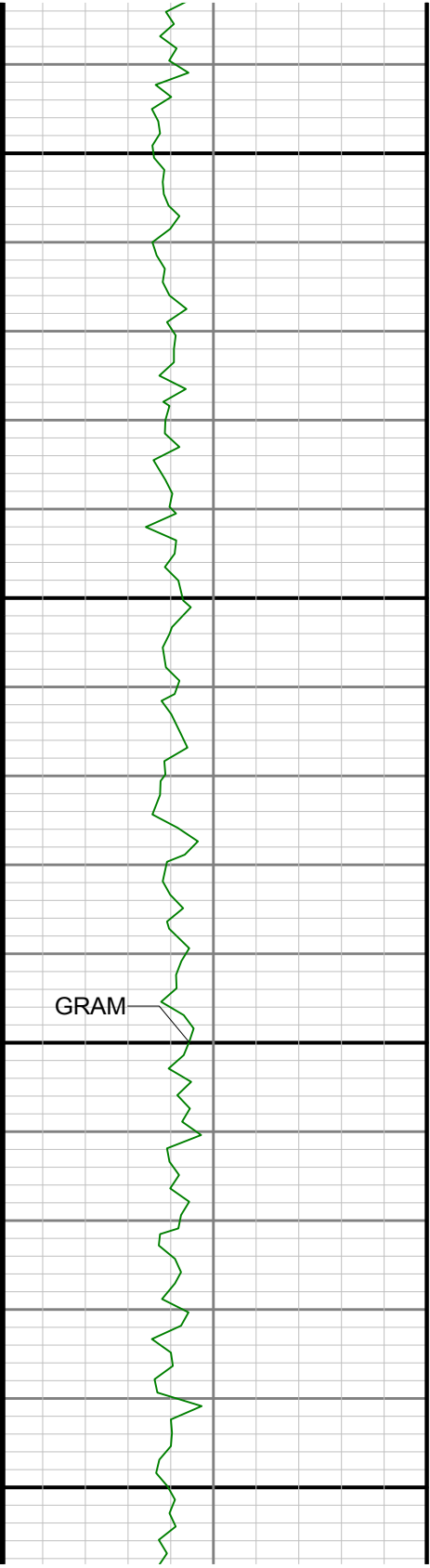




2800

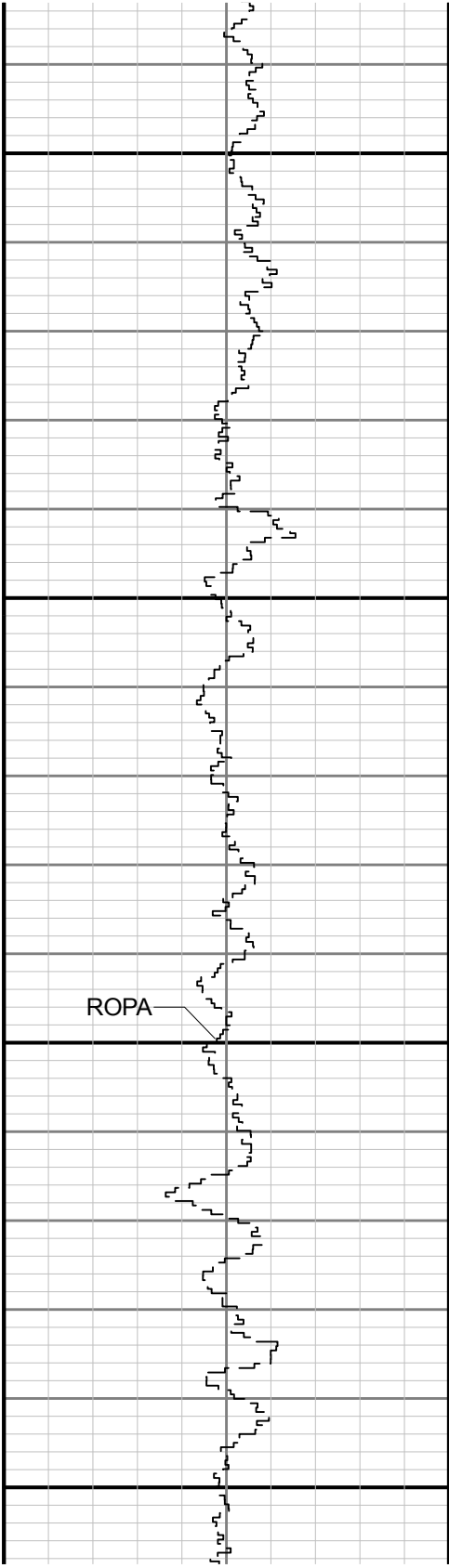




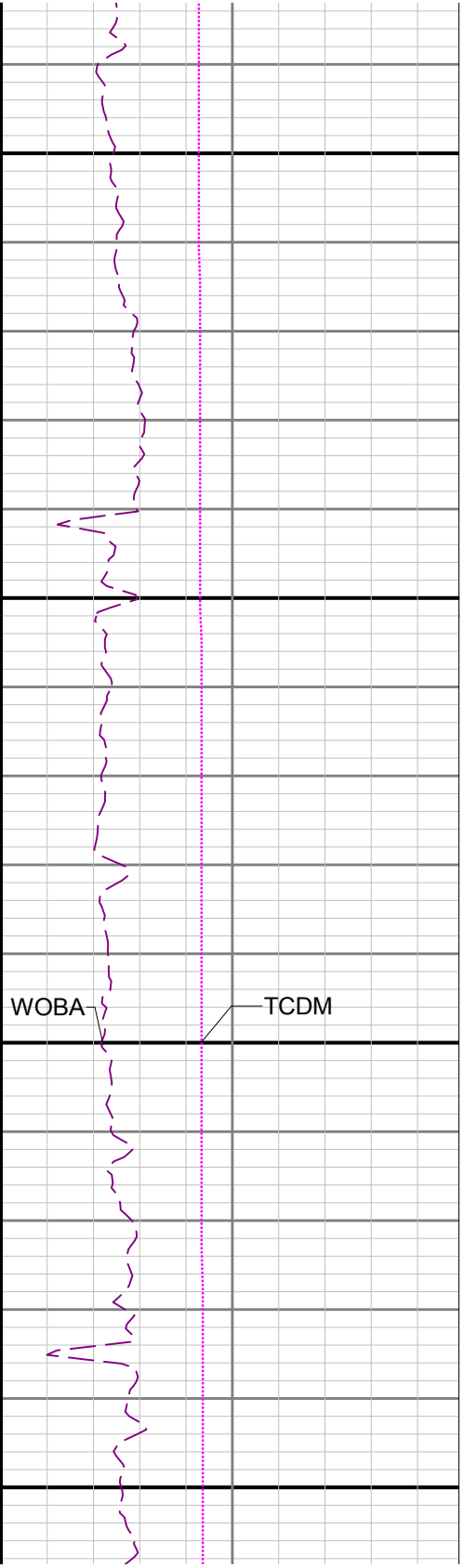


2900

3000

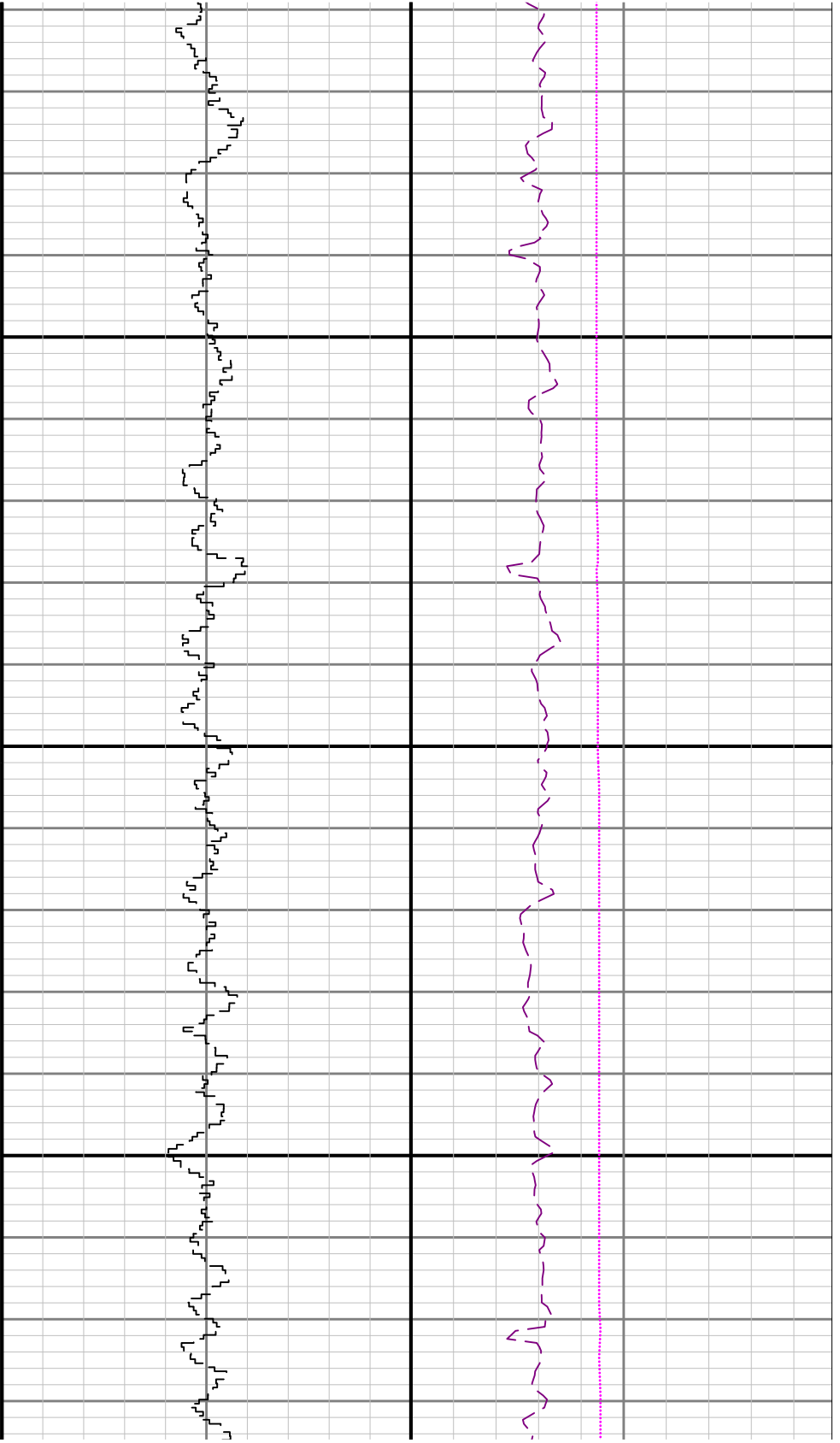


ROPA



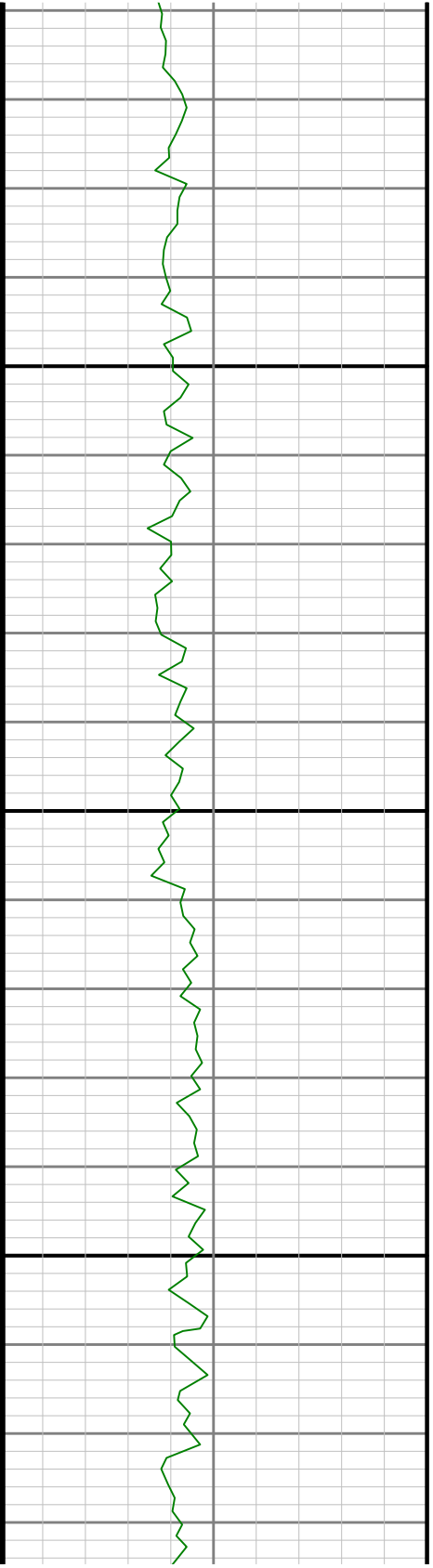
WOBA

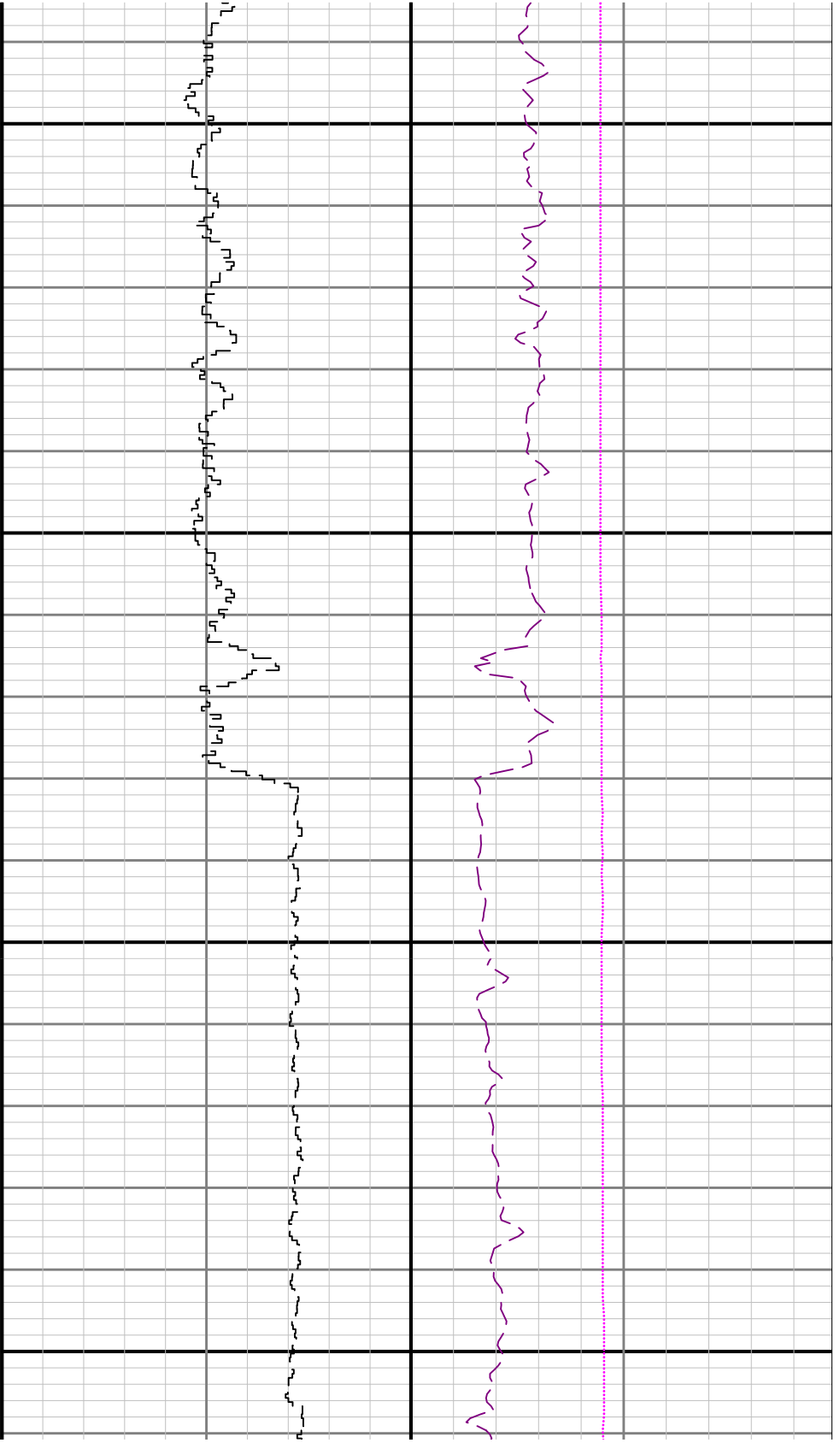
TCDM



3100

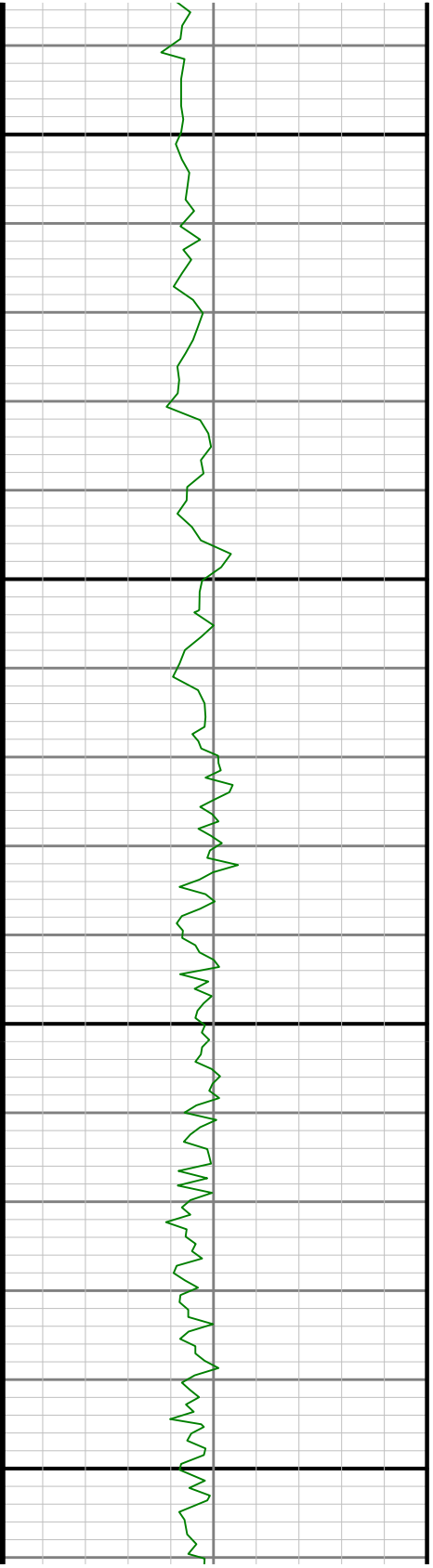
3200

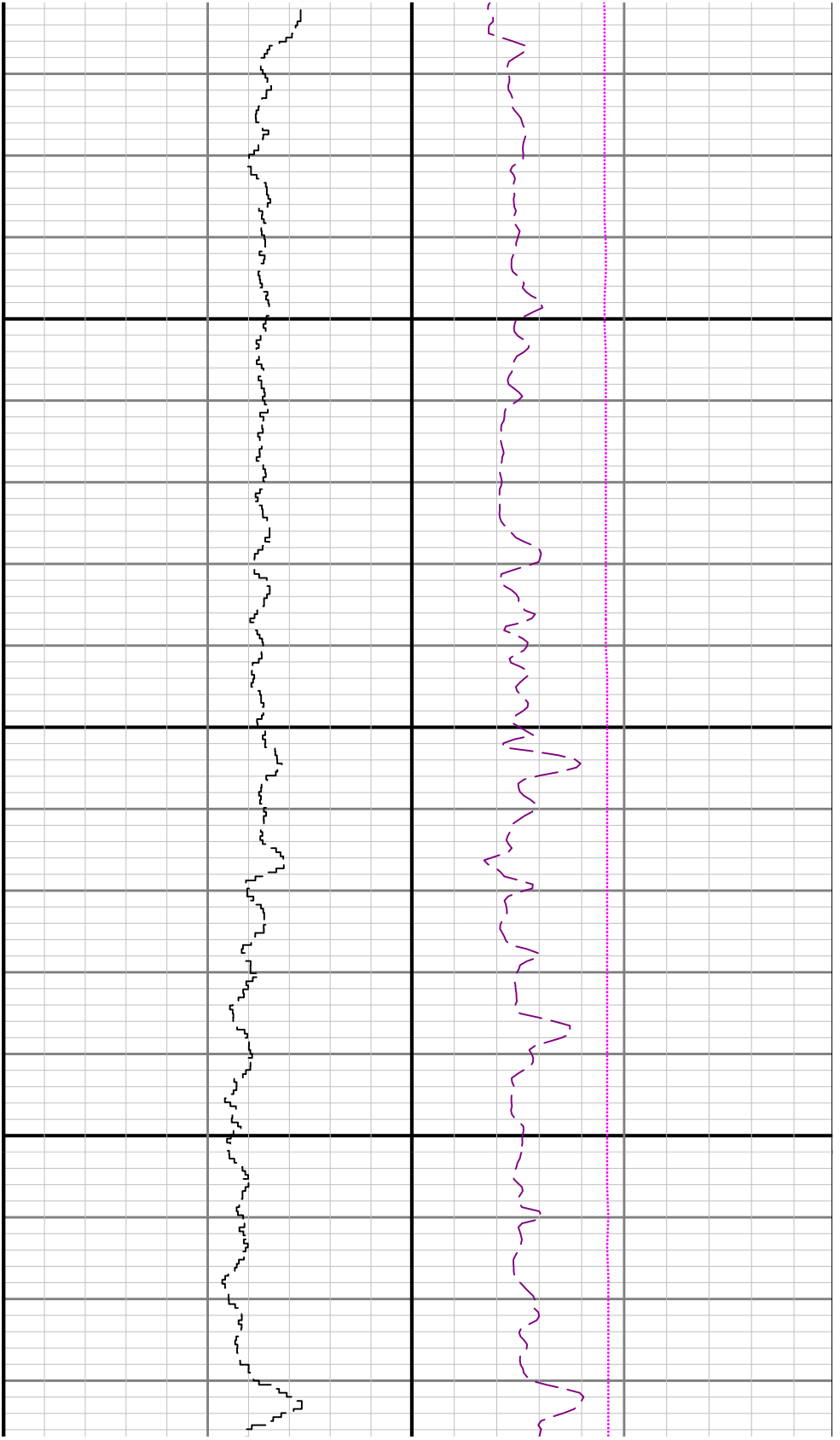




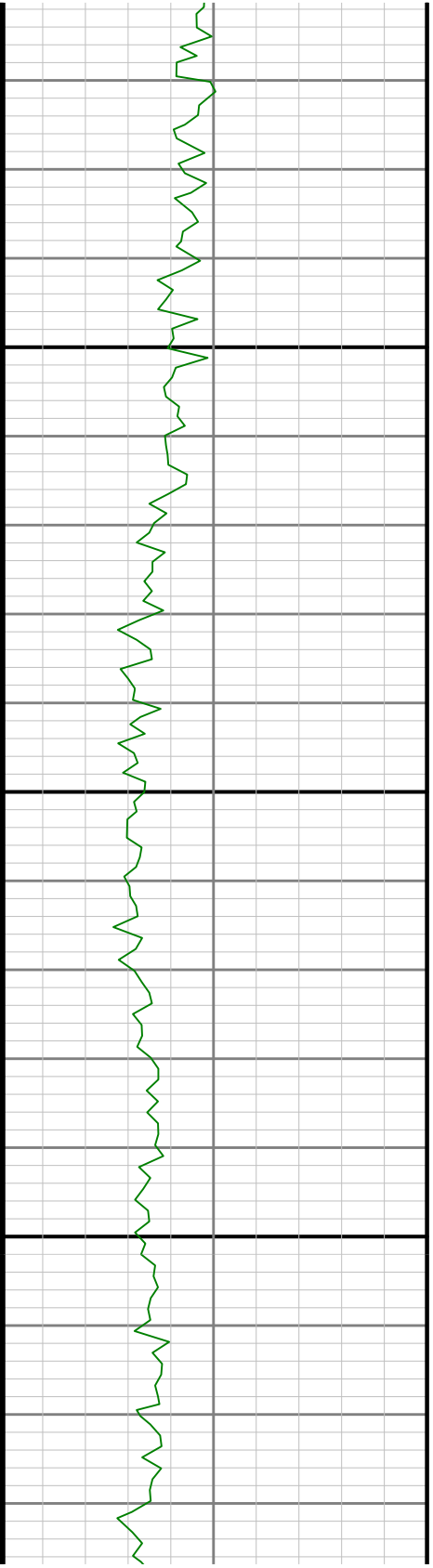
3300

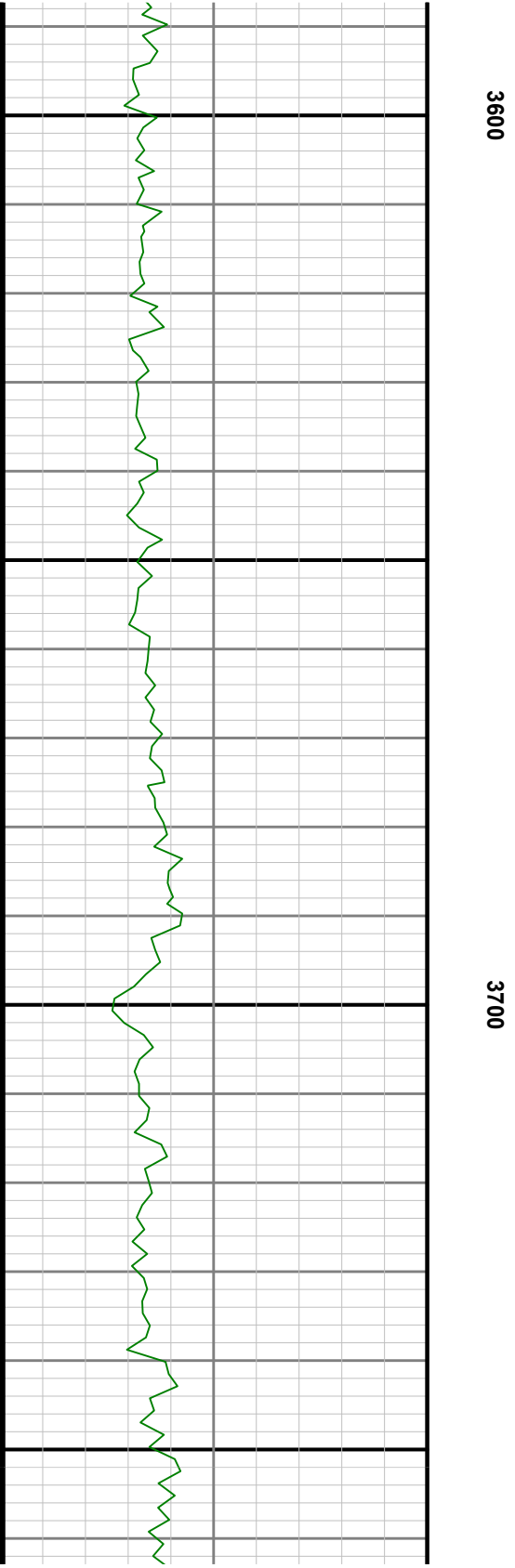
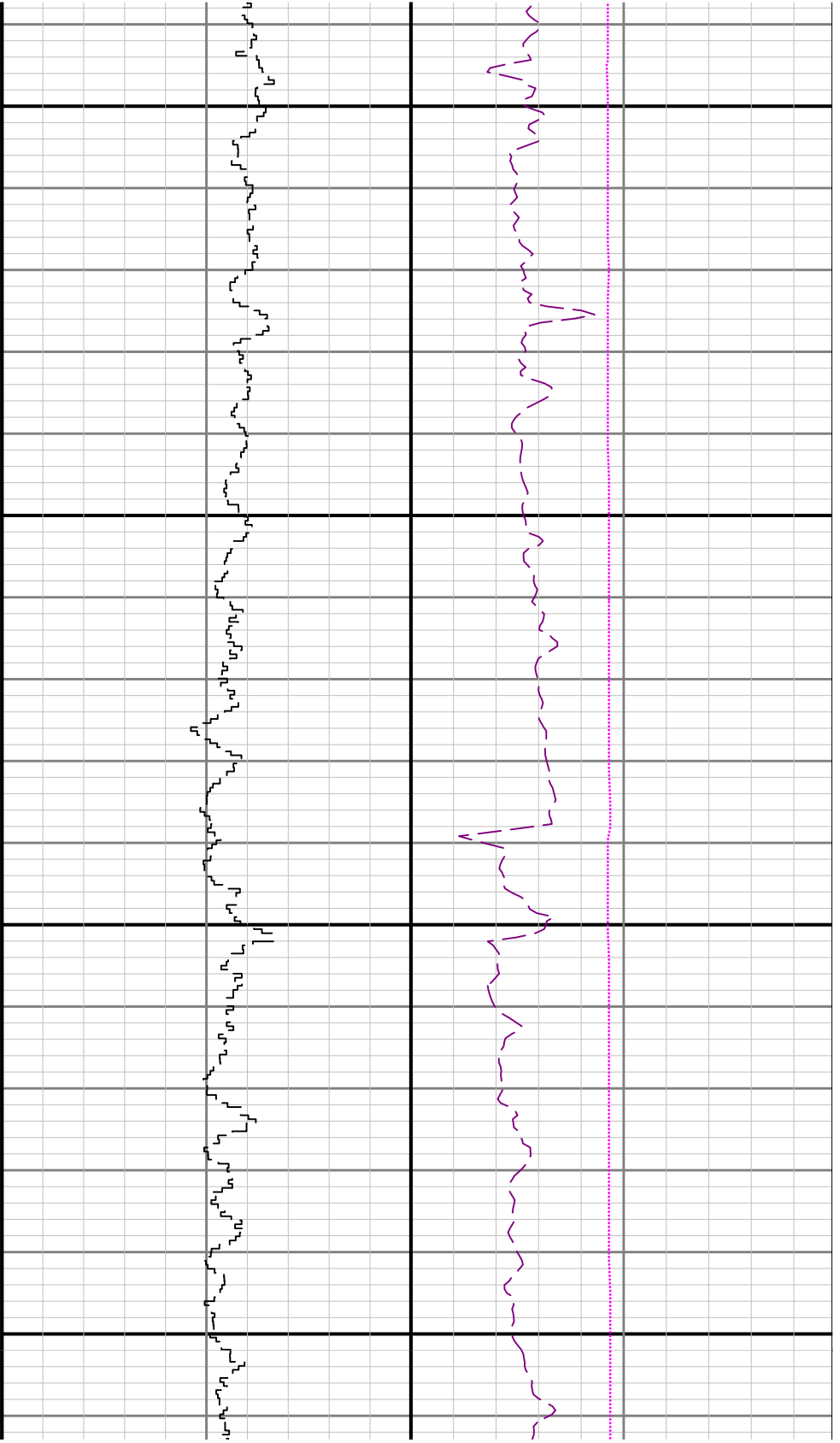
3400

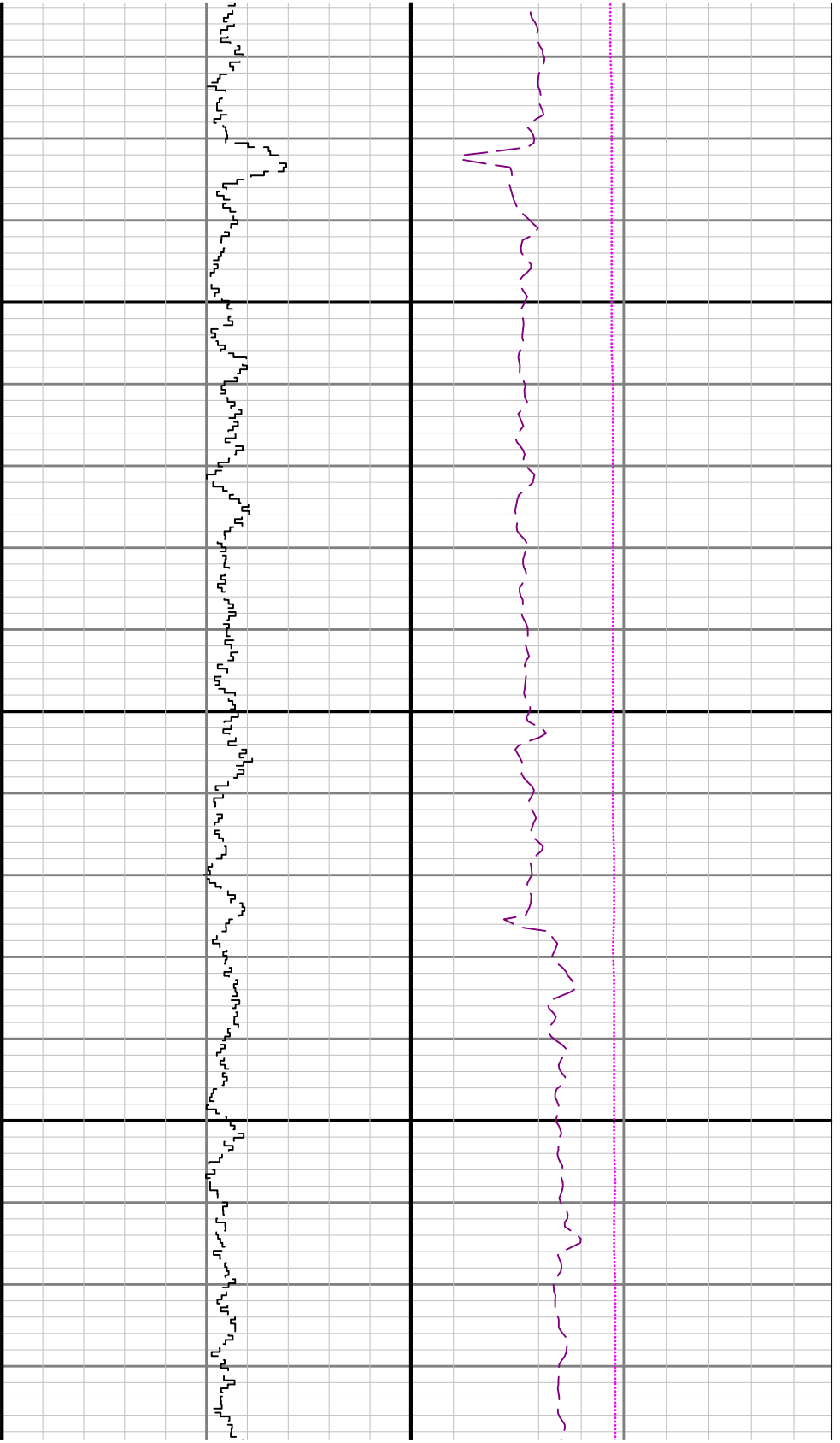




3500

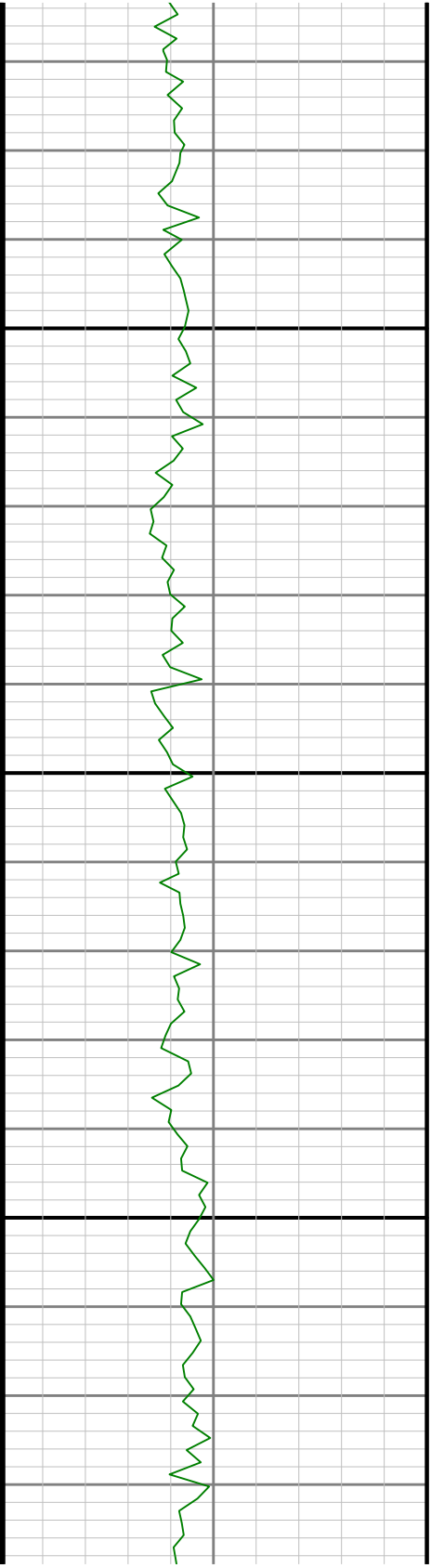


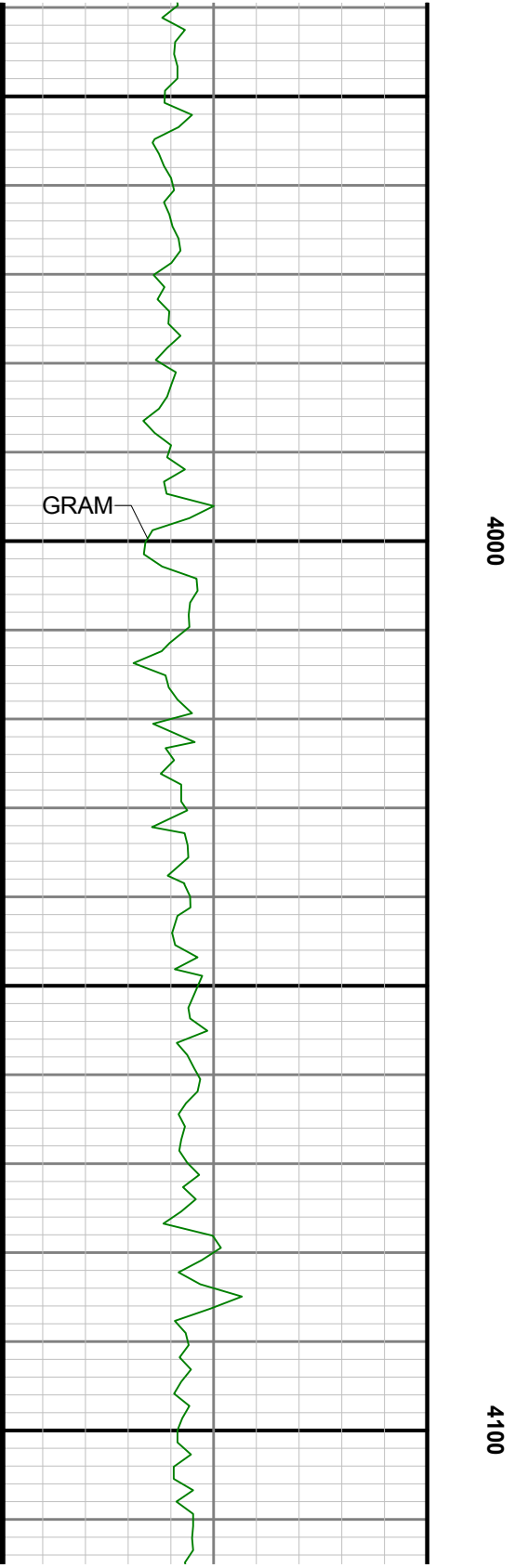
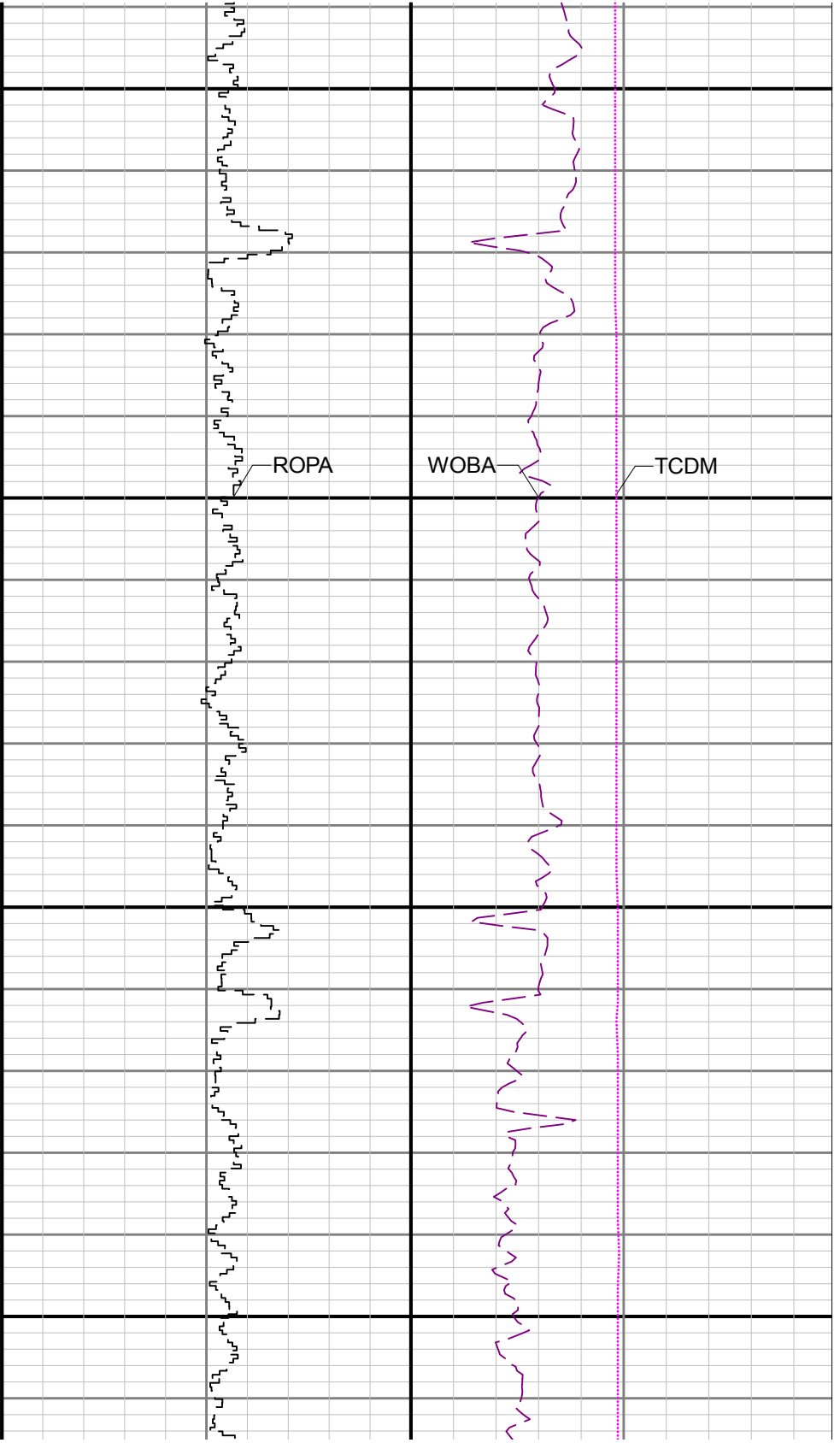


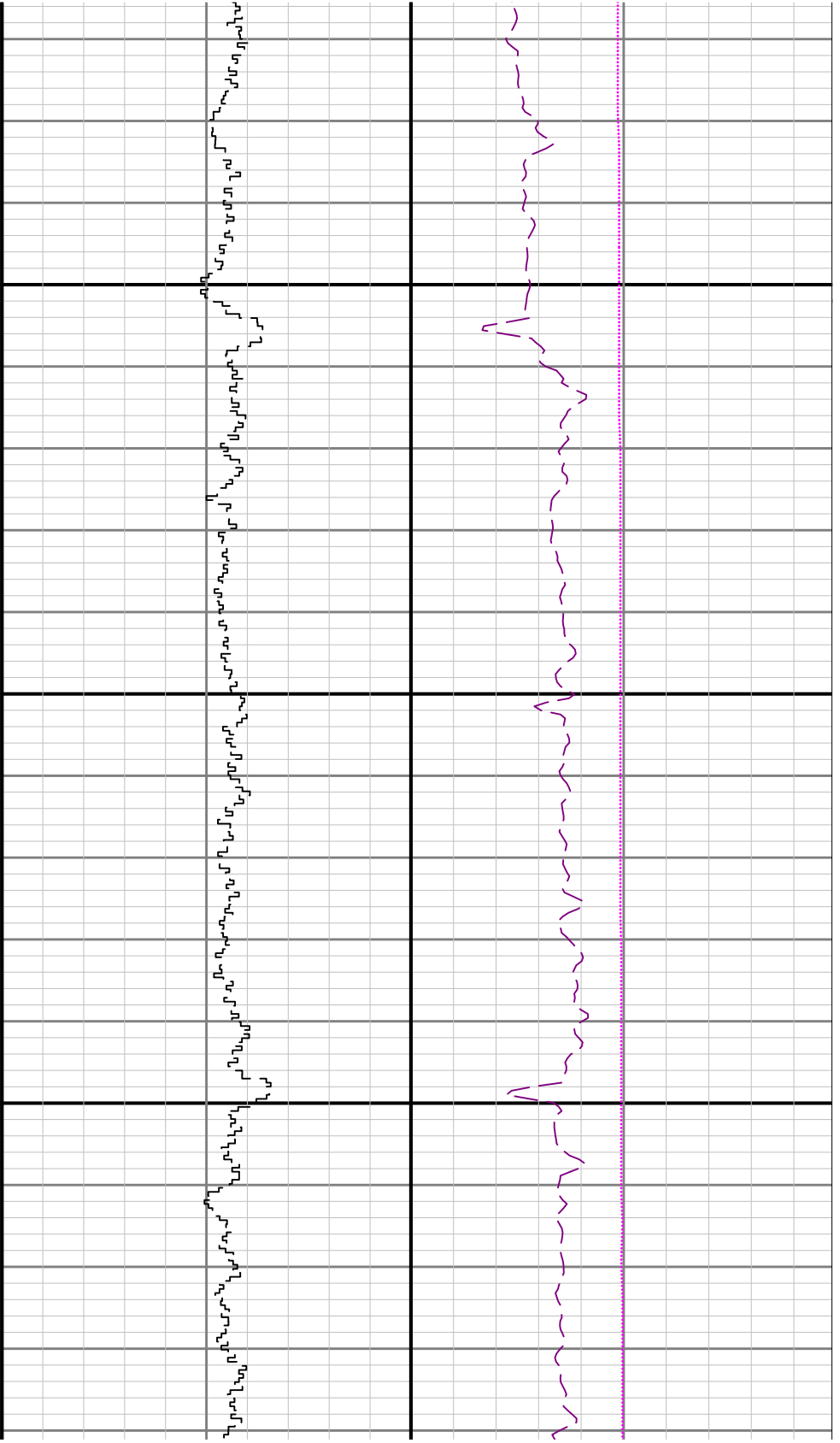


3800

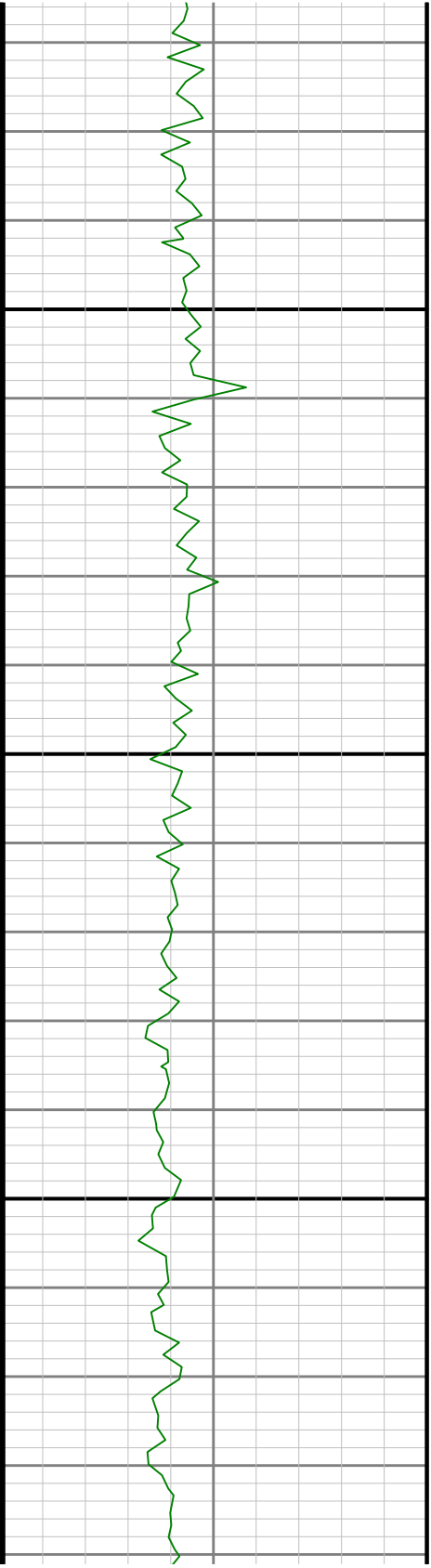
3900



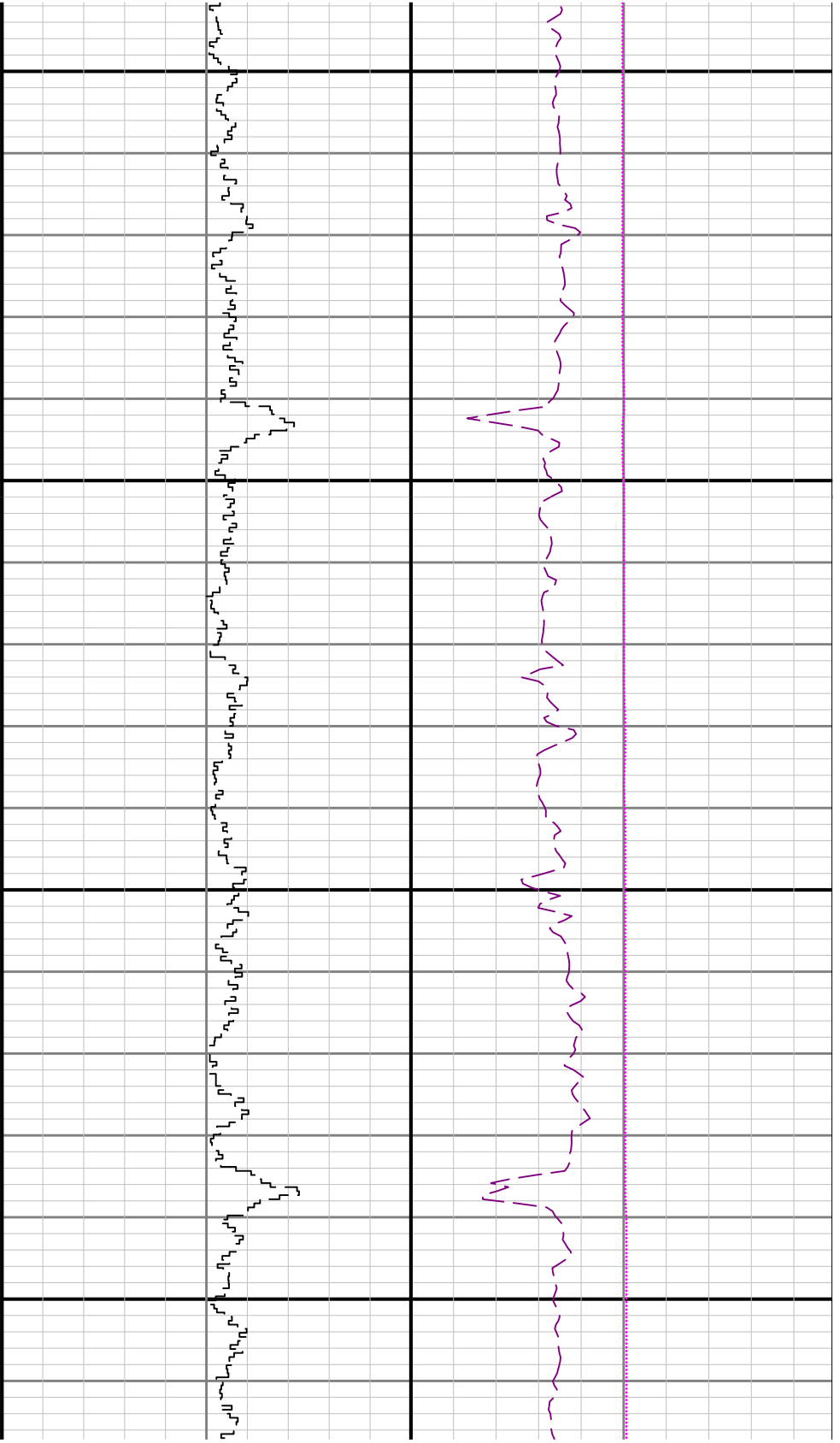




4200



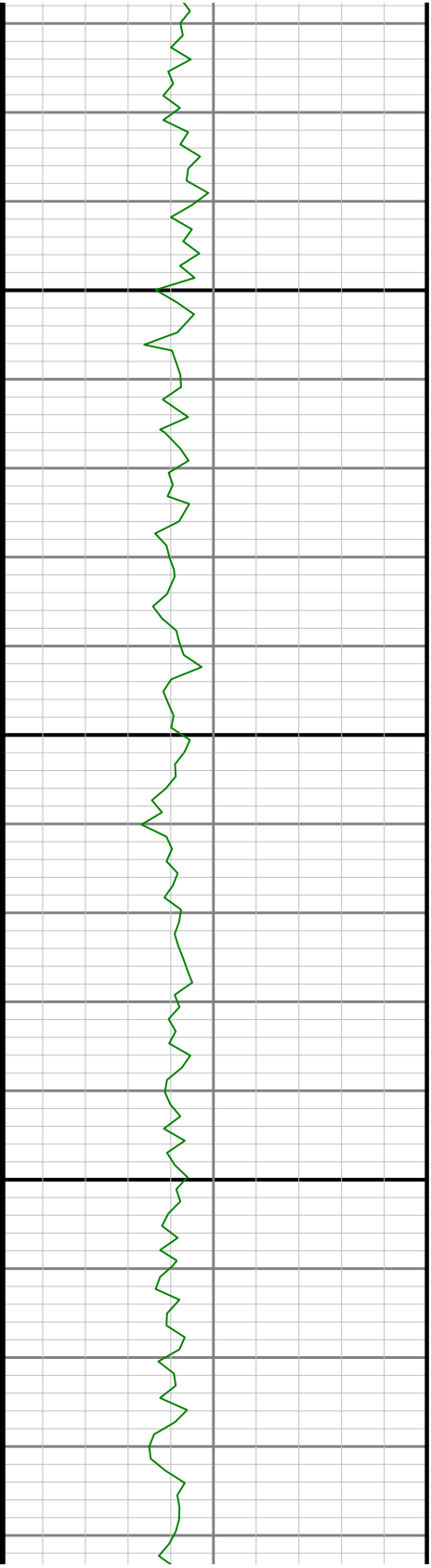


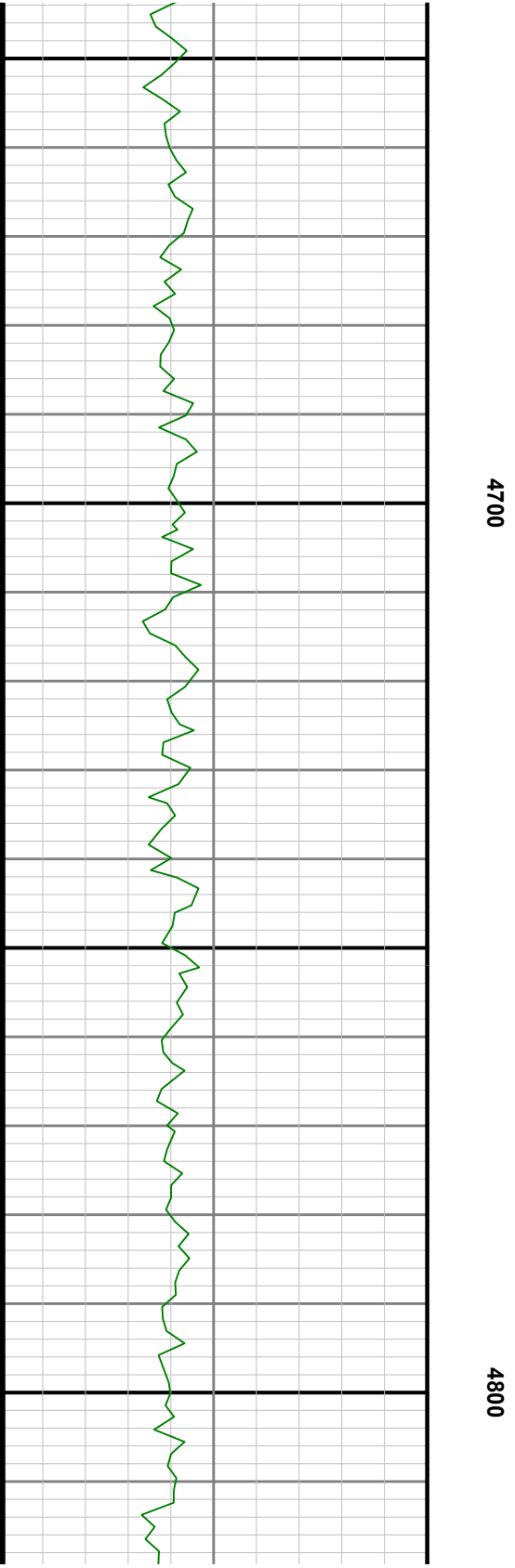




4500

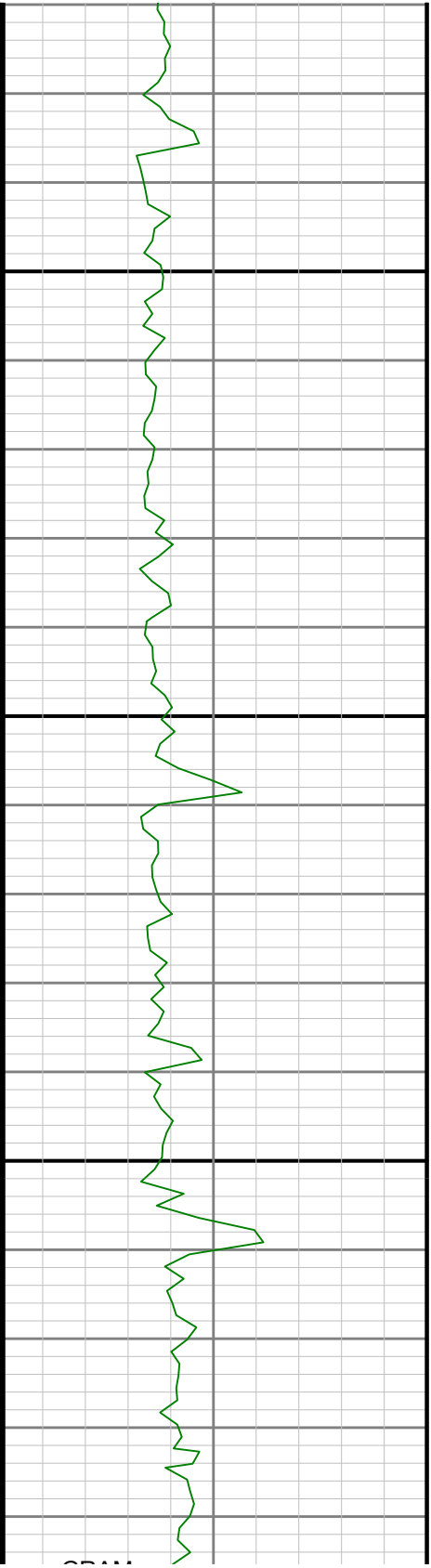
4600

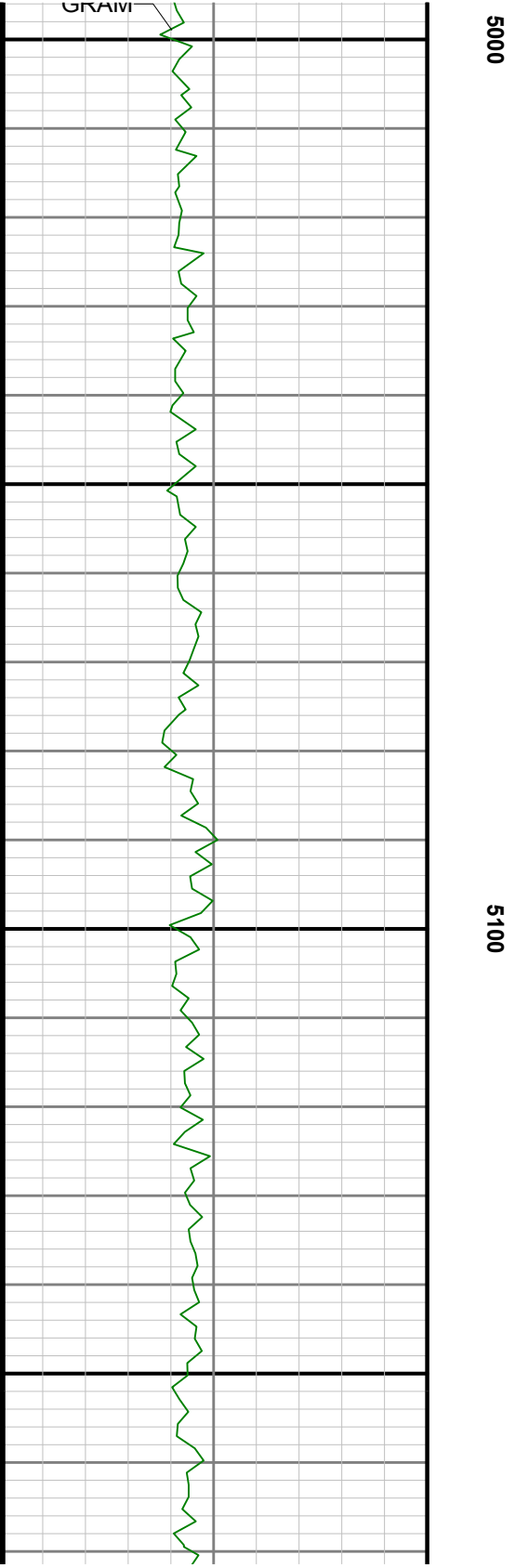
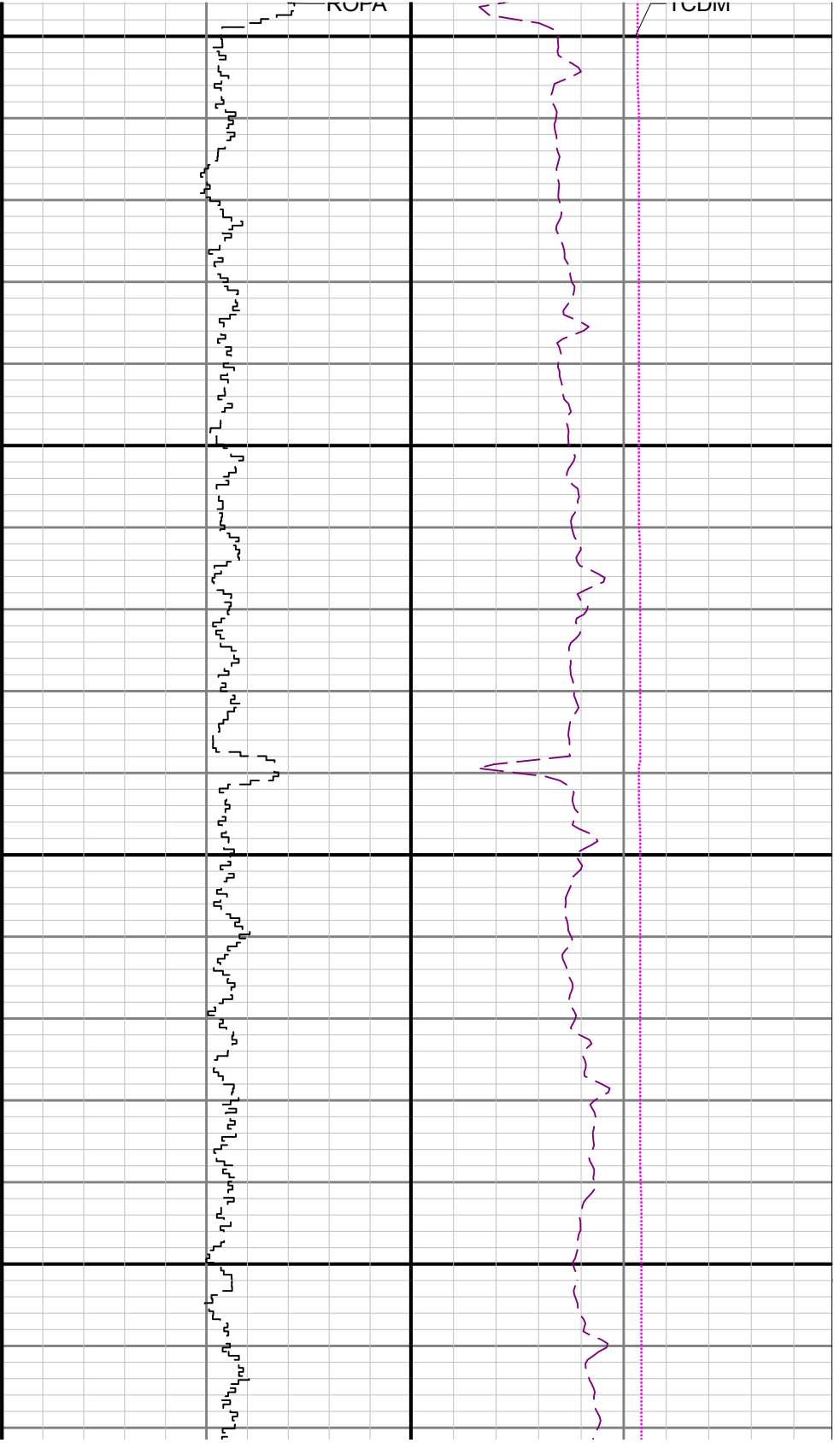


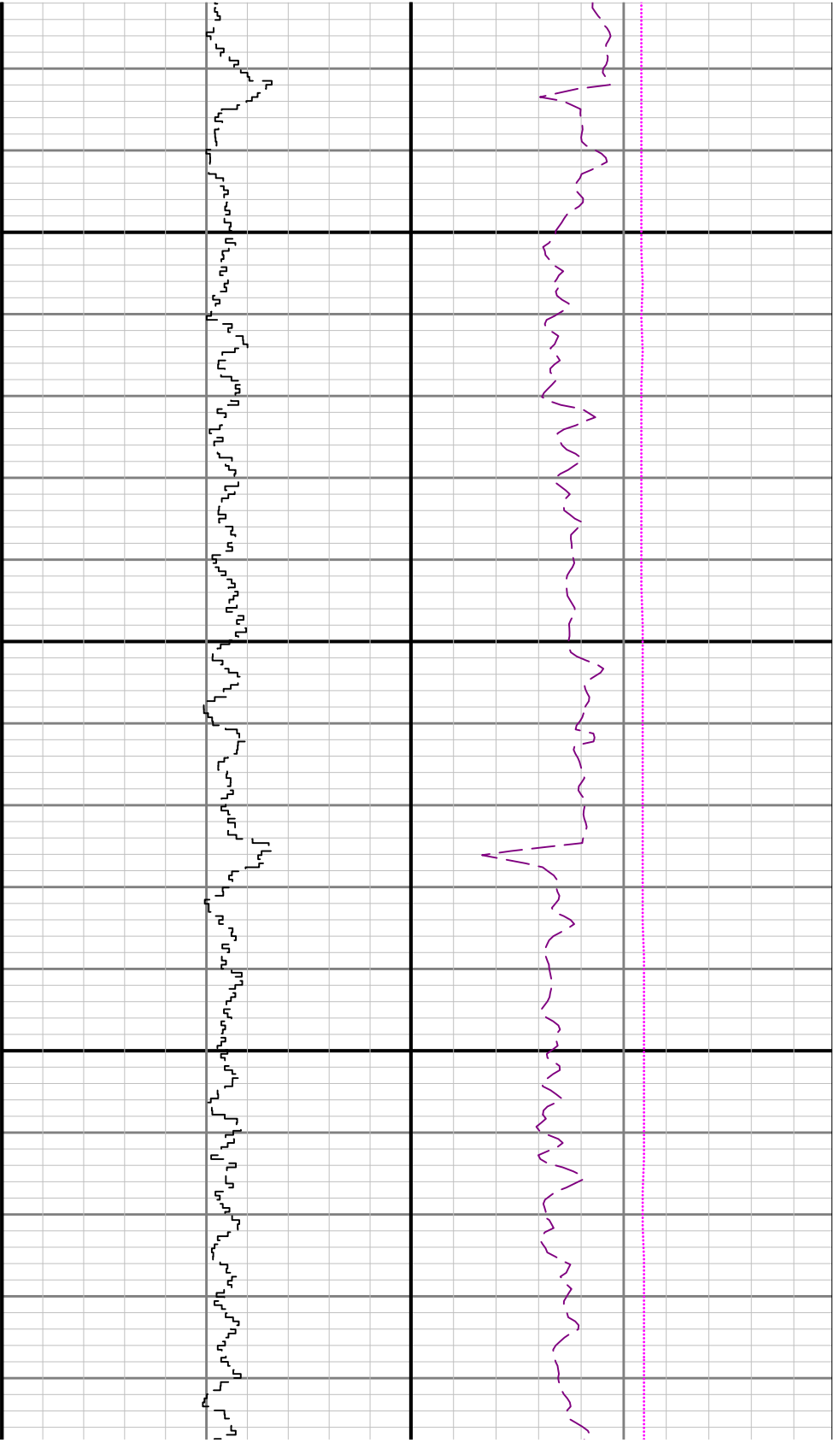




4900

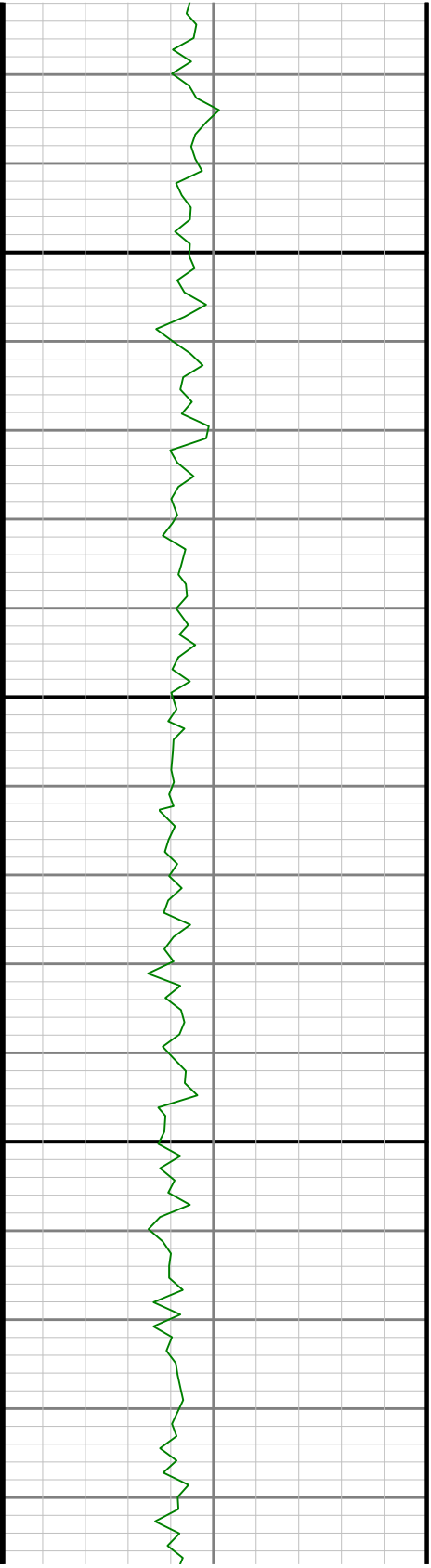


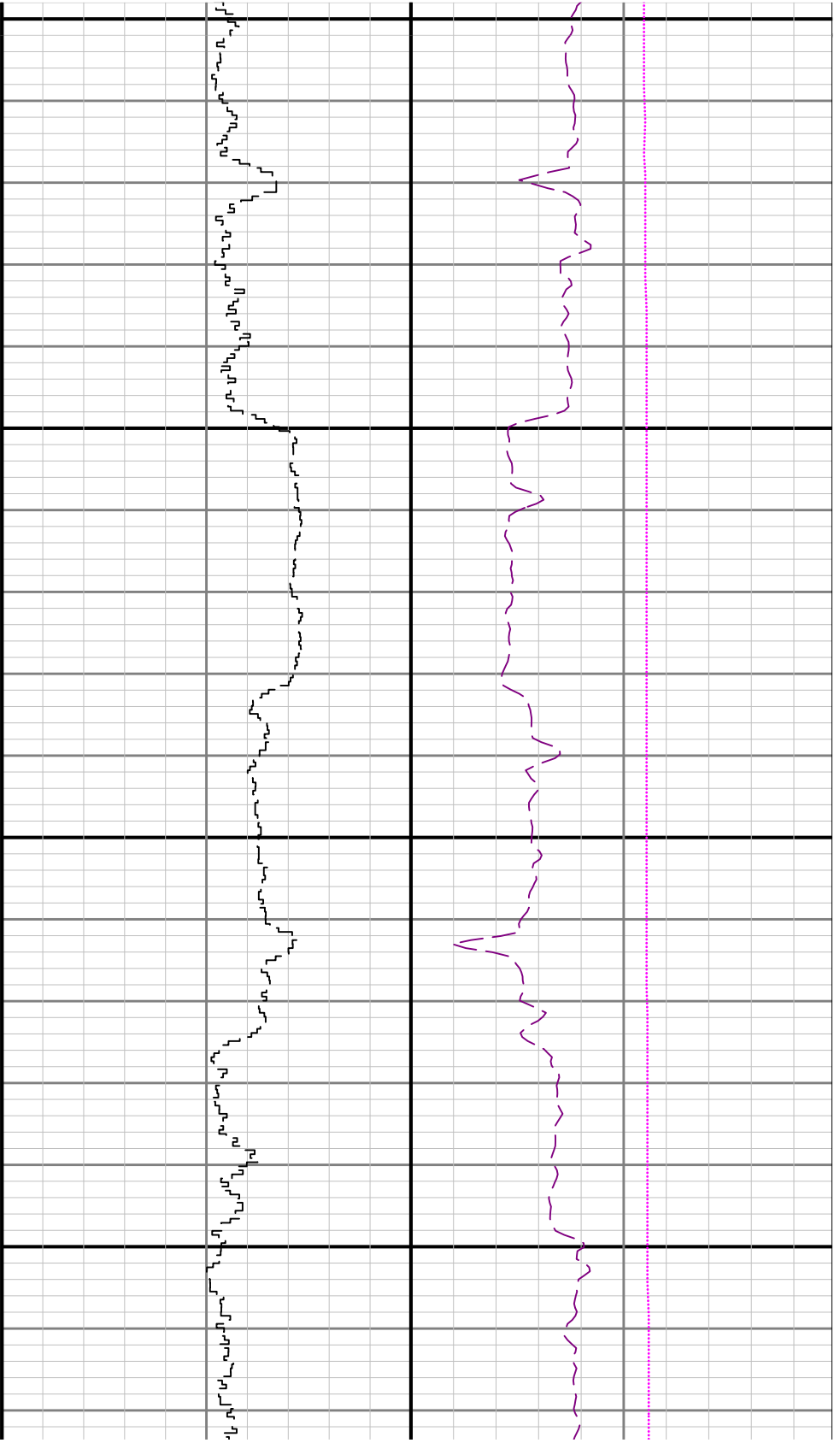




5200

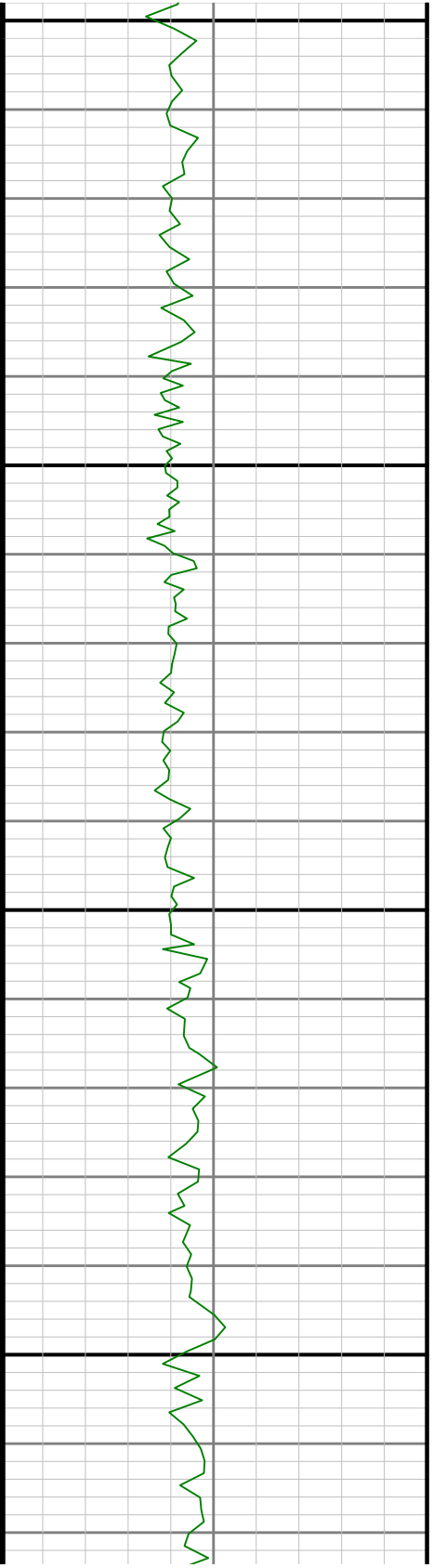
5300





5400

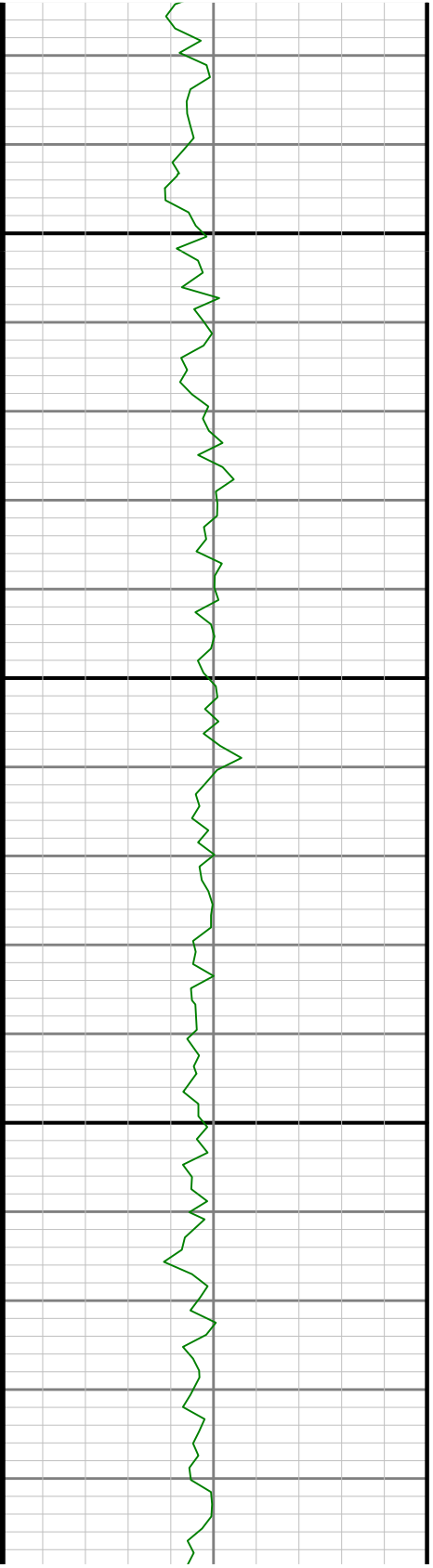
5500



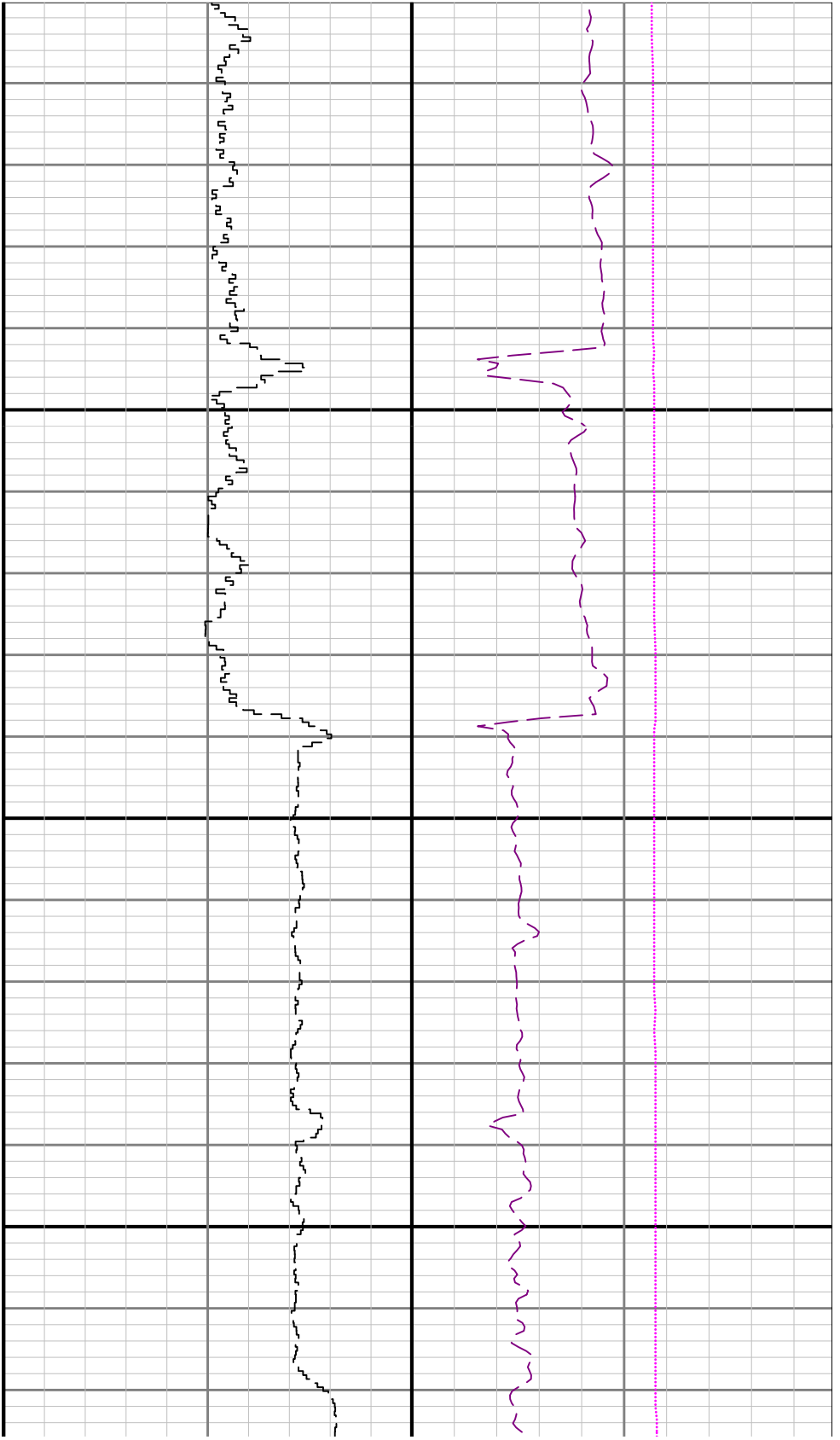


5600

57

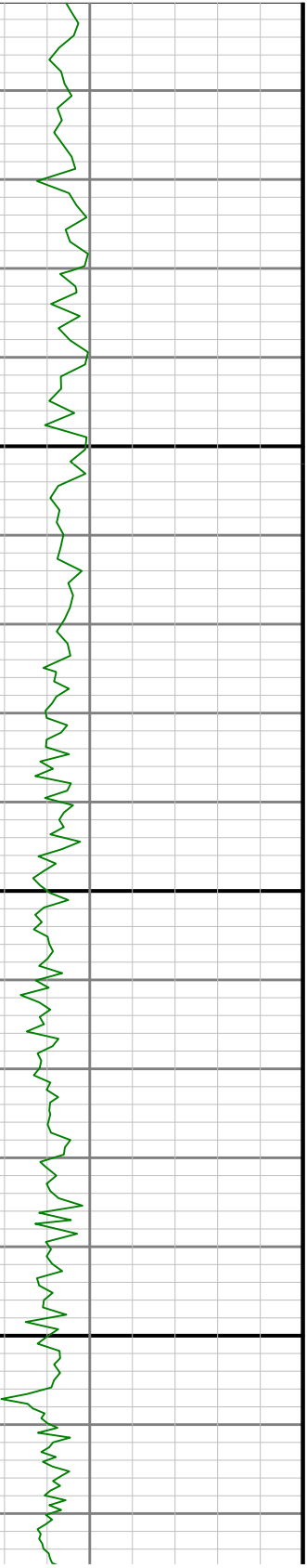


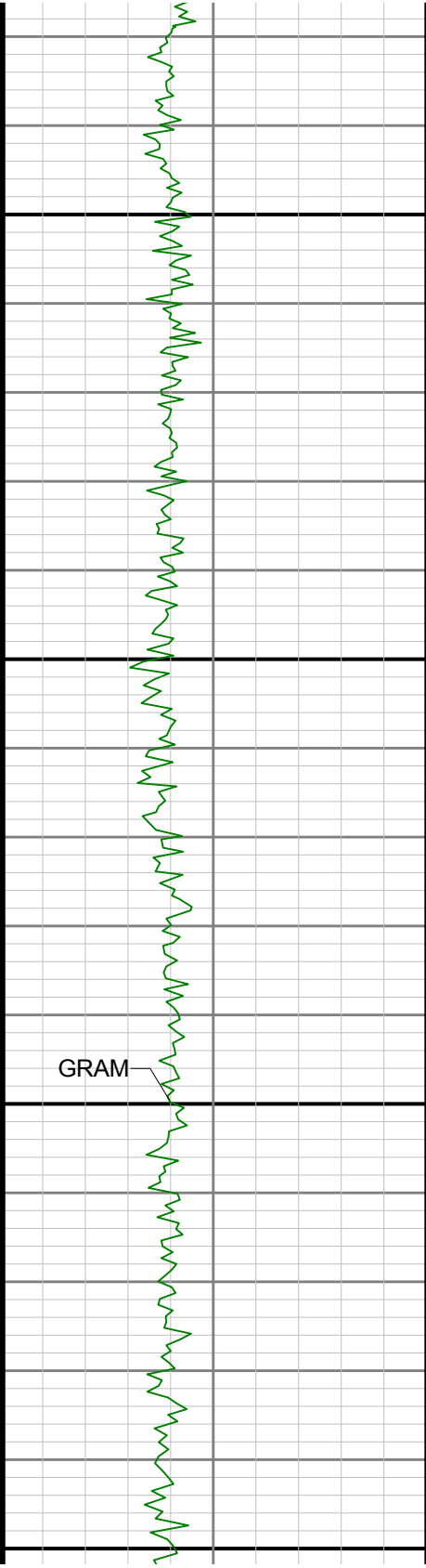




00

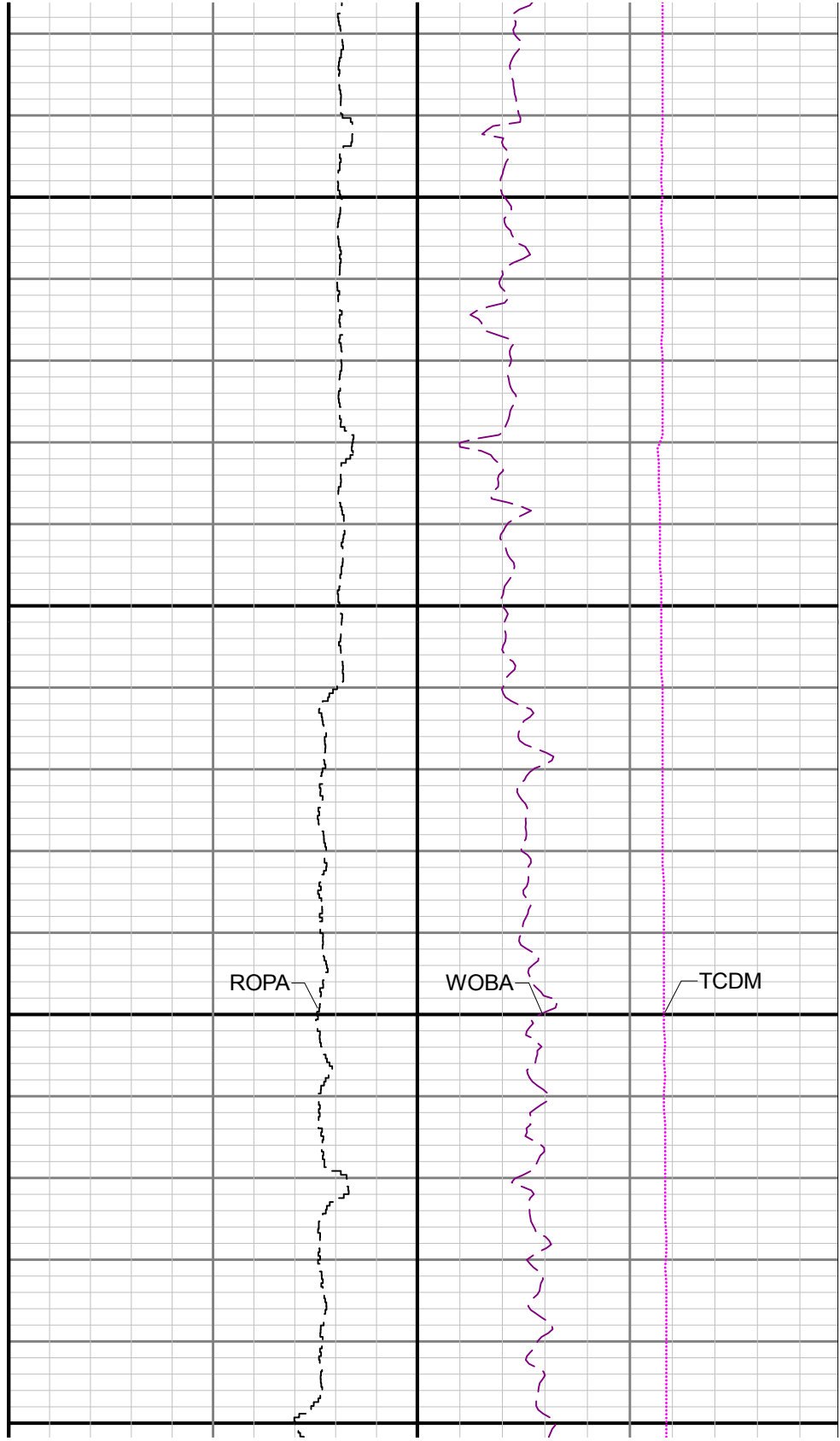
5800

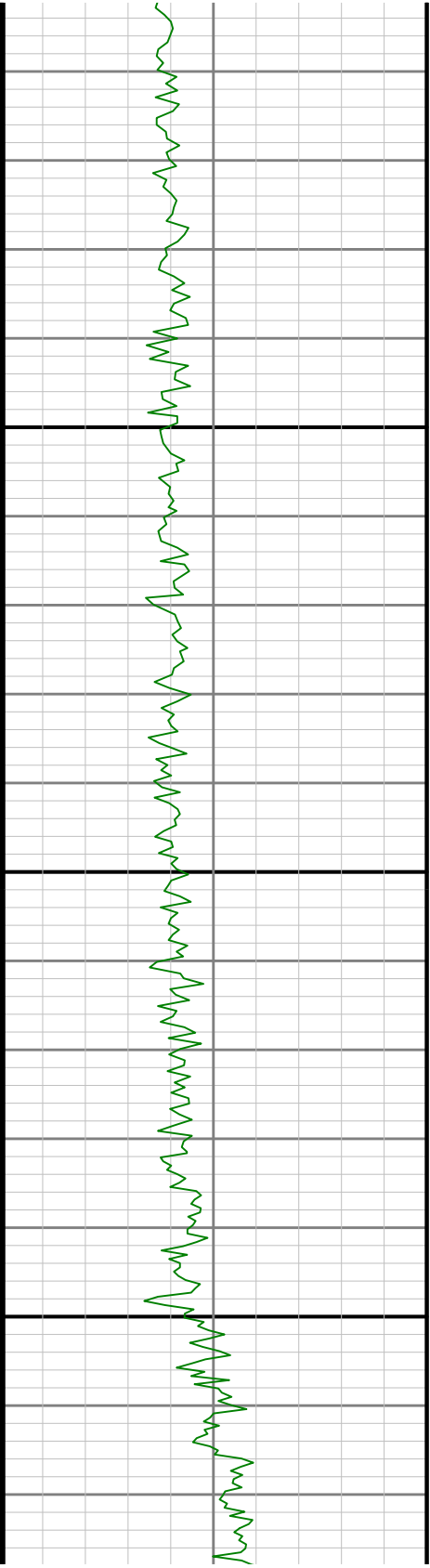




5900

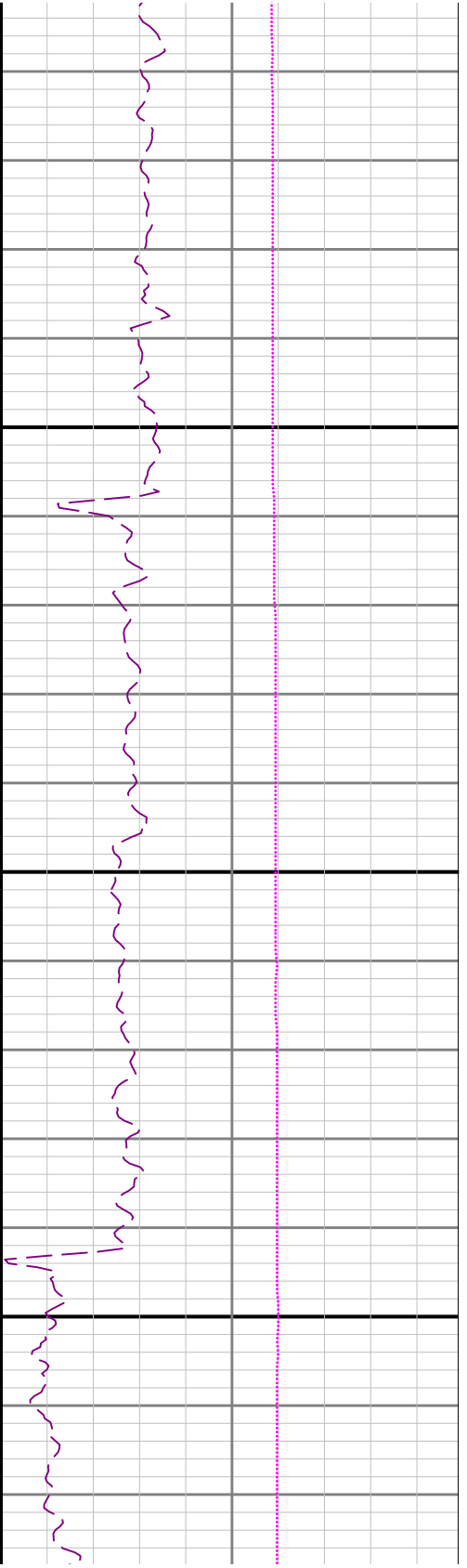
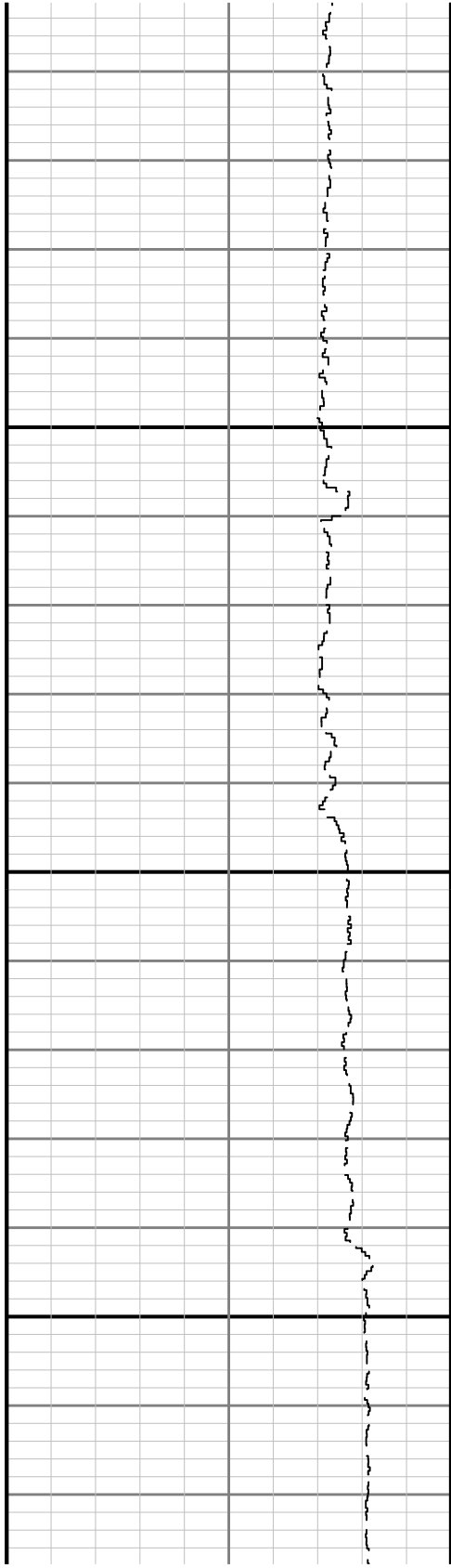
6000

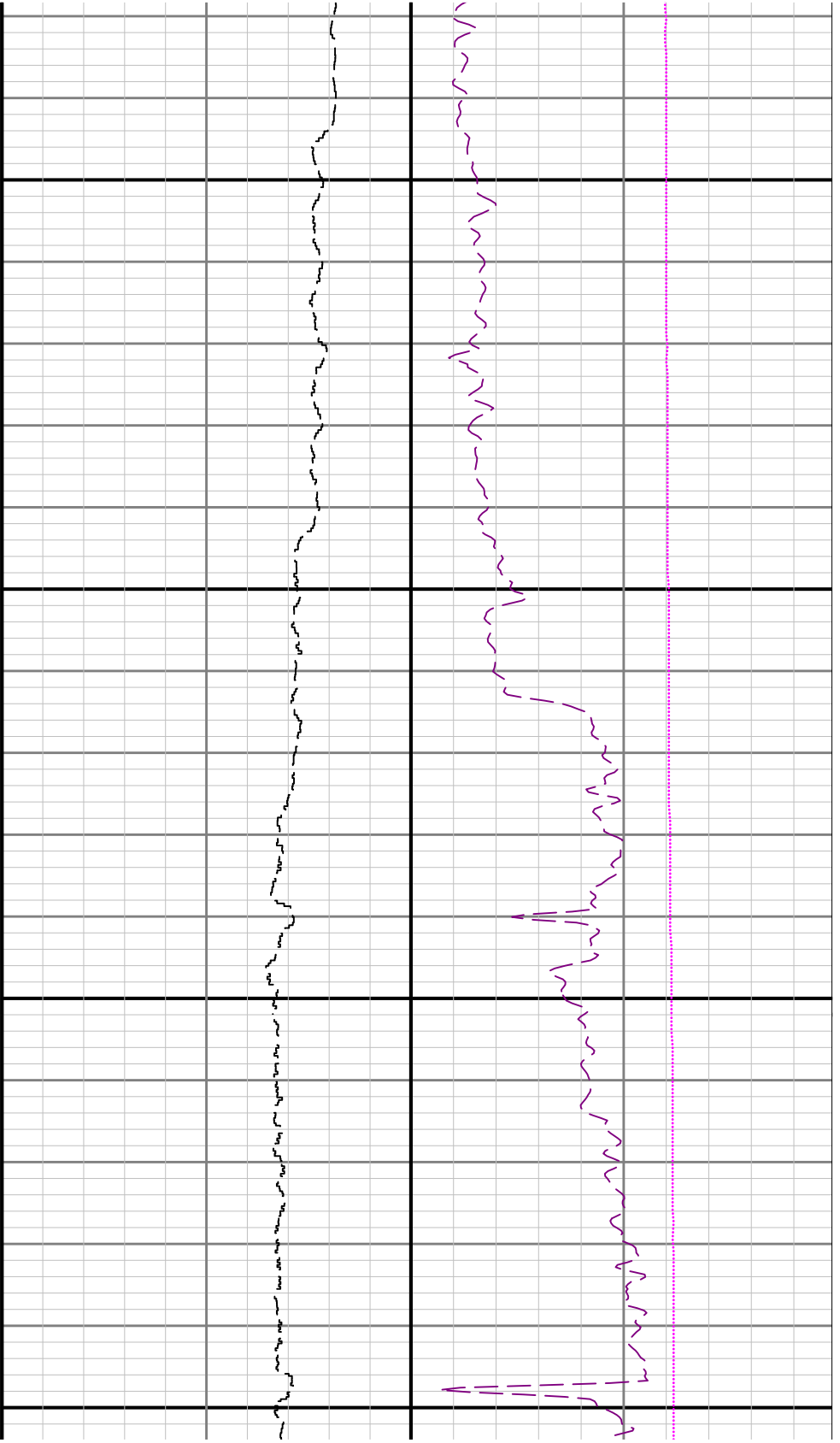




6100

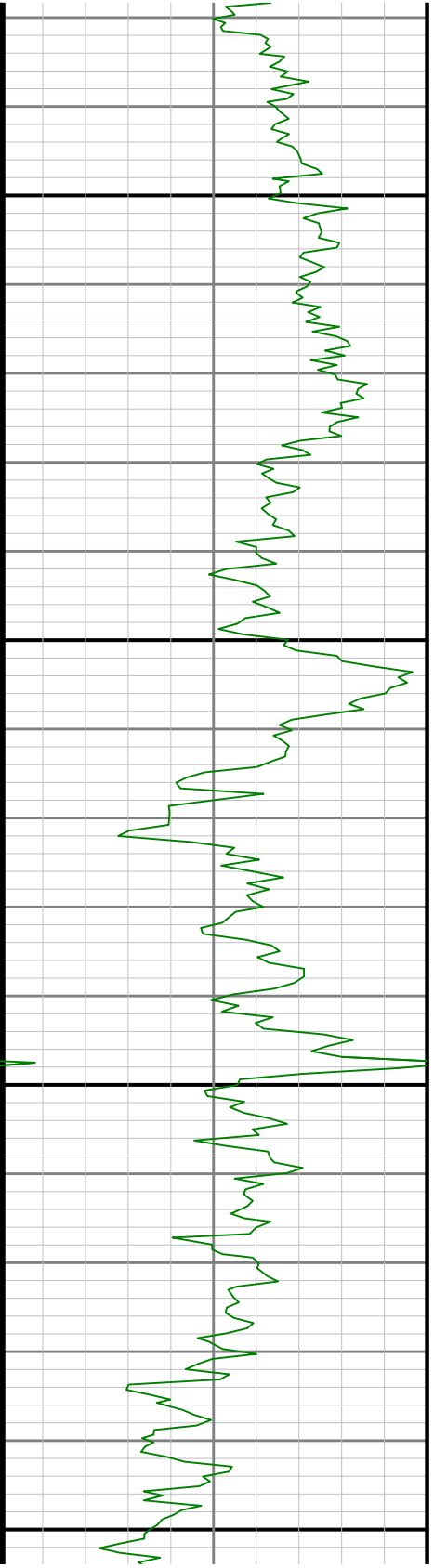
6200

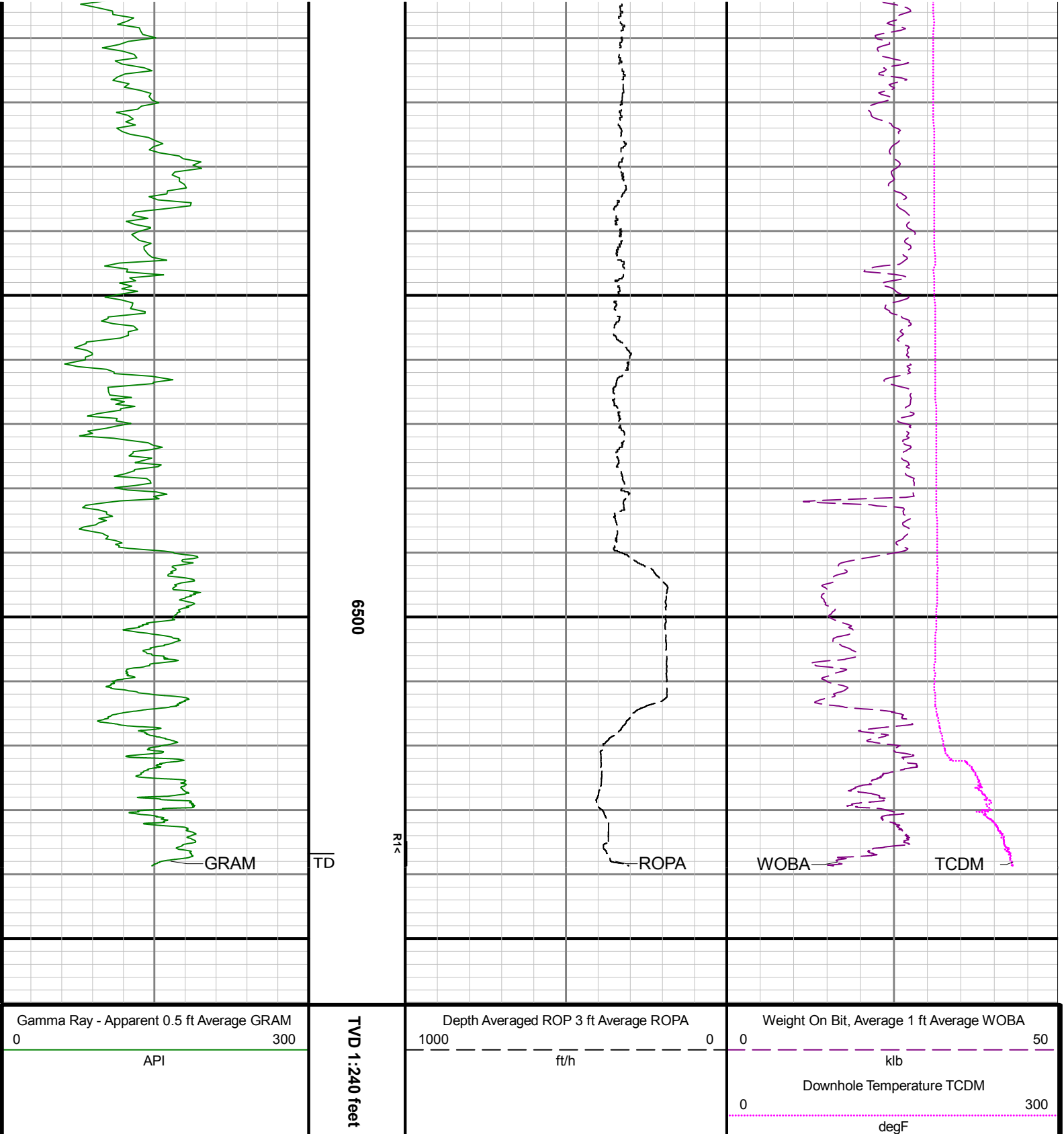




6300

6400





Directional Survey Summary												
Latitude:		040° 24' 53.856" N					Longitude:		104° 20' 18.096" W			
North Reference:		Grid					Drill Depth Zero:		Rig Floor			
Vertical Datum is:		Ground Level					Vertical Datum to DDZ: (ft)		30.00			
Vertical Section North: (m)		0.00					Vertical Section East: (m)		0.00			
Vertical Section Azimuth: (deg)		264.97										
Grid Convergence: (deg)		-0.75					Magnetic Declination: (deg)		7.88			
Total Correction: (deg)		7.13					TVD Calculation Method:		Minimum Curvature			
Magnetic Correction:		Off					Local Magnetic Field: (nT)		52291			
Local Magnetic Dip Angle: (deg)		67.14					Local Gravity Field: (m/s2)		9.800			
Tie-In / Projection	Measured Depth (ft)	Inclination (deg)	Azimuth (deg)	Temperature (degF)	North (ft)	East (ft)	True Vertical Depth (ft)	Vertical Section (ft)	Course Length (ft)	Dog Leg Severity (deg/100ft)	Build Rate (deg/100ft)	Turn Rate (deg/100ft)
Tie-In	0.00	0.00	0.00	N/A	0.00	0.00	0.00	0.00	0.00	0.00	0.00	0.00
	1981.00	0.53	283.48	N/A	2.14	-8.91	1980.97	8.69	1981.00	0.03	0.03	-3.86
	2076.00	4.29	205.01	N/A	-0.98	-10.84	2075.88	10.88	95.00	4.44	3.96	-82.60
	2170.00	6.87	203.45	N/A	-9.33	-14.56	2169.43	15.33	94.00	2.75	2.74	-1.66
	2265.00	8.92	209.76	N/A	-20.94	-20.48	2263.52	22.24	95.00	2.34	2.16	6.64
	2359.00	8.95	198.36	N/A	-34.20	-26.40	2356.39	29.30	94.00	1.88	0.03	-12.13
	2454.00	8.88	182.41	N/A	-48.55	-29.04	2450.26	33.18	95.00	2.59	-0.07	-16.79
	2549.00	8.91	168.18	N/A	-63.07	-27.84	2544.12	33.26	95.00	2.31	0.03	-14.98
	2643.00	8.90	164.91	N/A	-77.22	-24.46	2636.99	31.13	94.00	0.54	-0.01	-3.48
	2738.00	8.97	167.64	N/A	-91.55	-20.96	2730.84	28.90	95.00	0.45	0.07	2.87
	2832.00	8.99	169.60	N/A	-105.93	-18.06	2823.69	27.28	94.00	0.33	0.02	2.09
	2927.00	8.92	173.54	N/A	-120.55	-15.90	2917.53	26.40	95.00	0.65	-0.07	4.15
	3022.00	8.90	180.31	N/A	-135.22	-15.11	3011.39	26.90	95.00	1.10	-0.02	7.13
	3116.00	8.74	184.83	N/A	-149.61	-15.75	3104.28	28.80	94.00	0.76	-0.17	4.81
	3211.00	8.65	188.45	N/A	-163.86	-17.40	3198.19	31.70	95.00	0.58	-0.09	3.81
	3305.00	8.92	198.53	N/A	-177.77	-20.76	3291.09	36.27	94.00	1.66	0.29	10.72
	3400.00	8.92	193.00	N/A	-191.93	-24.76	3384.94	41.49	95.00	0.90	0.00	-5.82
	3494.00	9.17	184.38	N/A	-206.50	-26.97	3477.78	44.97	94.00	1.46	0.27	-9.17
	3589.00	8.89	171.59	N/A	-221.31	-26.47	3571.61	45.77	95.00	2.13	-0.29	-13.46
	3683.00	8.88	160.21	N/A	-235.32	-22.95	3664.49	43.50	94.00	1.87	-0.01	-12.11
	3778.00	8.95	160.81	N/A	-249.20	-18.04	3758.34	39.82	95.00	0.12	0.07	0.63
	3873.00	8.95	165.51	N/A	-263.33	-13.76	3852.18	36.80	95.00	0.77	0.00	4.95
	3967.00	8.81	169.84	N/A	-277.50	-10.66	3945.06	34.95	94.00	0.73	-0.15	4.61
	4062.00	8.82	173.69	N/A	-291.90	-8.58	4038.94	34.14	95.00	0.62	0.01	4.05
	4156.00	8.74	181.21	N/A	-306.20	-7.94	4131.84	34.76	94.00	1.22	-0.09	8.00
	4251.00	8.66	181.12	N/A	-320.57	-8.23	4225.75	36.31	95.00	0.09	-0.08	-0.09
	4345.00	8.68	179.72	N/A	-334.74	-8.34	4318.67	37.65	94.00	0.23	0.02	-1.49
	4440.00	8.63	178.90	N/A	-349.03	-8.16	4412.59	38.73	95.00	0.14	-0.05	-0.86
	4534.00	8.56	190.47	N/A	-362.96	-9.30	4505.54	41.09	94.00	1.84	-0.07	12.31
	4628.00	8.75	190.35	N/A	-376.88	-11.86	4598.47	44.85	94.00	0.20	0.20	-0.13
	4723.00	8.69	182.71	N/A	-391.15	-13.49	4692.38	47.74	95.00	1.22	-0.06	-8.04
	4817.00	8.67	178.64	N/A	-405.33	-13.66	4785.30	49.15	94.00	0.65	-0.02	-4.33
	4912.00	8.56	177.94	N/A	-419.55	-13.24	4879.23	49.97	95.00	0.16	-0.12	-0.74
	5007.00	8.60	179.54	N/A	-433.72	-12.93	4973.17	50.90	95.00	0.25	0.04	1.68
	5101.00	8.14	185.21	N/A	-447.38	-13.47	5066.17	52.65	94.00	1.00	-0.49	6.03
	5196.00	8.16	189.60	N/A	-460.72	-15.21	5160.21	55.54	95.00	0.66	0.02	4.62
	5290.00	7.69	193.13	N/A	-473.42	-17.75	5253.31	59.19	94.00	0.72	-0.50	3.76
	5385.00	8.09	202.18	N/A	-485.81	-21.72	5347.41	64.23	95.00	1.37	0.42	9.53
	5479.00	9.35	209.40	N/A	-498.58	-27.96	5440.33	71.57	94.00	1.77	1.34	7.68
	5574.00	9.00	215.01	N/A	-511.39	-36.01	5534.11	80.71	95.00	1.01	-0.37	5.91
	5668.00	9.37	220.69	N/A	-523.22	-45.22	5626.91	90.92	94.00	1.04	0.39	6.04
	5763.00	9.41	217.72	N/A	-535.22	-55.02	5720.64	101.73	95.00	0.51	0.04	-3.13
	5857.00	8.98	215.21	N/A	-547.30	-63.95	5813.43	111.69	94.00	0.63	-0.46	-2.67
	5952.00	10.64	220.23	N/A	-560.05	-73.89	5907.04	122.71	95.00	1.06	1.75	5.28

	5952.00	10.64	220.23	N/A	-560.05	-73.89	5907.04	122.71	95.00	1.96	1.73	5.28
	6046.00	17.41	238.07	N/A	-574.14	-91.45	5998.23	141.44	94.00	8.47	7.20	18.98
	6141.00	22.74	255.94	N/A	-586.13	-121.38	6087.51	172.30	95.00	8.50	5.61	18.81
	6235.00	28.50	267.79	N/A	-591.42	-161.47	6172.28	212.70	94.00	8.17	6.13	12.61
	6330.00	37.02	269.65	N/A	-592.47	-212.81	6252.10	263.94	95.00	9.03	8.97	1.96
	6424.00	46.08	266.72	N/A	-594.59	-275.05	6322.38	326.12	94.00	9.86	9.64	-3.12
	6519.00	53.86	262.82	N/A	-601.35	-347.39	6383.45	398.78	95.00	8.77	8.19	-4.11
	6613.00	61.57	261.28	N/A	-612.38	-426.03	6433.63	478.08	94.00	8.32	8.20	-1.64
	6708.00	68.37	263.00	N/A	-624.11	-511.25	6473.80	564.00	95.00	7.34	7.16	1.81
	6803.00	76.67	266.29	N/A	-632.49	-601.38	6502.32	654.52	95.00	9.34	8.74	3.46
	6897.00	88.28	268.17	N/A	-636.97	-694.30	6514.61	747.47	94.00	12.51	12.35	2.00
	6992.00	89.08	265.37	N/A	-642.32	-789.11	6516.79	842.39	95.00	3.06	0.84	-2.95
	7086.00	88.92	263.27	N/A	-651.62	-882.63	6518.44	936.36	94.00	2.24	-0.17	-2.23
	7181.00	89.01	264.08	N/A	-662.09	-977.03	6520.15	1031.32	95.00	0.86	0.09	0.85
	7276.00	89.69	266.71	N/A	-669.71	-1071.71	6521.23	1126.30	95.00	2.86	0.72	2.77
	7370.00	89.82	269.45	N/A	-672.86	-1165.65	6521.63	1220.15	94.00	2.92	0.14	2.91
	7465.00	89.82	270.74	N/A	-672.70	-1260.65	6521.93	1314.77	95.00	1.36	0.00	1.36
	7559.00	89.91	267.96	N/A	-673.77	-1354.63	6522.15	1408.49	94.00	2.96	0.10	-2.96
	7654.00	89.97	271.03	N/A	-674.61	-1449.62	6522.25	1503.18	95.00	3.23	0.06	3.23
	7748.00	89.91	275.66	N/A	-669.12	-1543.43	6522.35	1596.15	94.00	4.93	-0.06	4.93
	7843.00	90.43	275.94	N/A	-659.52	-1637.94	6522.07	1689.46	95.00	0.62	0.55	0.29
	7937.00	90.40	274.99	N/A	-650.57	-1731.51	6521.39	1781.88	94.00	1.01	-0.03	-1.01
	8032.00	89.78	271.41	N/A	-645.27	-1826.35	6521.24	1875.89	95.00	3.82	-0.65	-3.77
	8126.00	90.00	265.19	N/A	-648.06	-1920.26	6521.42	1969.69	94.00	6.62	0.23	-6.62
	8221.00	89.82	265.85	N/A	-655.48	-2014.97	6521.57	2064.68	95.00	0.72	-0.19	0.69
	8315.00	89.97	265.83	N/A	-662.30	-2108.72	6521.74	2158.67	94.00	0.16	0.16	-0.02
	8410.00	89.94	265.35	N/A	-669.60	-2203.44	6521.81	2253.66	95.00	0.51	-0.03	-0.51
	8504.00	89.88	264.72	N/A	-677.74	-2297.09	6521.96	2347.66	94.00	0.67	-0.06	-0.67
	8599.00	89.85	264.29	N/A	-686.83	-2391.65	6522.19	2442.66	95.00	0.45	-0.03	-0.45
	8693.00	89.78	265.82	N/A	-694.94	-2485.30	6522.49	2536.66	94.00	1.63	-0.07	1.63
	8787.00	90.00	266.17	N/A	-701.50	-2579.07	6522.67	2630.64	94.00	0.44	0.23	0.37
	8882.00	89.82	265.72	N/A	-708.22	-2673.83	6522.82	2725.63	95.00	0.51	-0.19	-0.47
	8976.00	89.88	266.17	N/A	-714.87	-2767.59	6523.06	2819.61	94.00	0.48	0.06	0.48
	9071.00	89.91	268.23	N/A	-719.51	-2862.47	6523.24	2914.53	95.00	2.17	0.03	2.17
	9165.00	89.72	268.61	N/A	-722.10	-2956.44	6523.54	3008.36	94.00	0.45	-0.20	0.40
	9260.00	89.94	268.96	N/A	-724.11	-3051.42	6523.82	3103.15	95.00	0.44	0.23	0.37
	9354.00	89.88	268.90	N/A	-725.87	-3145.40	6523.97	3196.93	94.00	0.09	-0.06	-0.06
	9449.00	89.82	269.55	N/A	-727.15	-3240.39	6524.22	3291.67	95.00	0.69	-0.06	0.68
	9543.00	89.82	269.25	N/A	-728.14	-3334.38	6524.52	3385.38	94.00	0.32	0.00	-0.32
	9637.00	89.82	267.70	N/A	-730.64	-3428.35	6524.81	3479.20	94.00	1.65	0.00	-1.65
	9732.00	89.78	266.96	N/A	-735.06	-3523.24	6525.14	3574.12	95.00	0.78	-0.04	-0.78
	9826.00	89.88	266.70	N/A	-740.26	-3617.10	6525.42	3668.07	94.00	0.30	0.11	-0.28
	9921.00	89.88	266.38	N/A	-746.00	-3711.92	6525.62	3763.04	95.00	0.34	0.00	-0.34
	10015.00	89.78	266.63	N/A	-751.73	-3805.75	6525.90	3857.00	94.00	0.29	-0.11	0.27
	10110.00	89.91	267.35	N/A	-756.71	-3900.62	6526.16	3951.94	95.00	0.77	0.14	0.76
	10204.00	89.91	268.41	N/A	-760.19	-3994.55	6526.30	4045.82	94.00	1.13	0.00	1.13
	10299.00	89.88	269.79	N/A	-761.68	-4089.54	6526.48	4140.57	95.00	1.45	-0.03	1.45
	10334.00	89.94	270.28	N/A	-761.66	-4124.54	6526.53	4175.43	35.00	1.41	0.17	1.40
	10428.00	89.91	269.80	N/A	-761.60	-4218.54	6526.66	4269.07	94.00	0.51	-0.03	-0.51
	10523.00	89.85	269.90	N/A	-761.85	-4313.54	6526.86	4363.72	95.00	0.12	-0.06	0.11
	10617.00	89.97	270.51	N/A	-761.51	-4407.54	6527.00	4457.33	94.00	0.66	0.13	0.65
	10712.00	89.69	270.33	N/A	-760.81	-4502.53	6527.28	4551.90	95.00	0.35	-0.29	-0.19
	10806.00	89.94	270.12	N/A	-760.44	-4596.53	6527.59	4645.50	94.00	0.35	0.27	-0.22
	10901.00	89.97	269.94	N/A	-760.39	-4691.53	6527.66	4740.13	95.00	0.19	0.03	-0.19
	10996.00	89.78	270.47	N/A	-760.05	-4786.53	6527.87	4834.74	95.00	0.59	-0.20	0.56
	11090.00	89.82	269.66	N/A	-759.95	-4880.53	6528.20	4928.36	94.00	0.86	0.04	-0.86
	11185.00	89.88	267.70	N/A	-762.14	-4975.50	6528.45	5023.16	95.00	2.06	0.06	-2.06
	11279.00	90.43	271.05	N/A	-763.16	-5069.48	6528.19	5116.87	94.00	3.61	0.59	3.56
	11374.00	89.94	267.44	N/A	-764.41	-5164.45	6527.89	5211.59	95.00	3.83	-0.52	-3.80

	11468.00	89.97	265.88	N/A	-769.89	-5258.29	6527.96	5305.54	94.00	1.66	0.03	-1.66
	11563.00	90.00	265.79	N/A	-776.79	-5353.04	6527.98	5400.53	95.00	0.10	0.03	-0.09
	11658.00	89.08	266.34	N/A	-783.31	-5447.81	6528.75	5495.51	95.00	1.13	-0.97	0.58
	11752.00	89.78	266.65	N/A	-789.05	-5541.63	6529.68	5589.47	94.00	0.81	0.74	0.33
	11847.00	89.88	265.15	N/A	-795.85	-5636.38	6529.96	5684.46	95.00	1.58	0.11	-1.58
	11941.00	89.91	265.74	N/A	-803.31	-5730.09	6530.14	5778.45	94.00	0.63	0.03	0.63
	12035.00	89.91	266.80	N/A	-809.43	-5823.89	6530.28	5872.43	94.00	1.13	0.00	1.13
	12130.00	89.75	268.46	N/A	-813.35	-5918.80	6530.57	5967.32	95.00	1.76	-0.17	1.75
	12224.00	89.72	270.92	N/A	-813.86	-6012.79	6531.00	6060.99	94.00	2.62	-0.03	2.62
	12319.00	89.94	271.60	N/A	-811.77	-6107.77	6531.28	6155.42	95.00	0.75	0.23	0.72
	12413.00	89.91	270.62	N/A	-809.95	-6201.75	6531.41	6248.88	94.00	1.04	-0.03	-1.04
	12508.00	89.88	269.91	N/A	-809.51	-6296.75	6531.58	6343.47	95.00	0.75	-0.03	-0.75
	12602.00	89.91	270.55	N/A	-809.14	-6390.75	6531.75	6437.08	94.00	0.68	0.03	0.68
	12697.00	90.06	268.40	N/A	-810.01	-6485.74	6531.78	6531.78	95.00	2.27	0.16	-2.26
	12792.00	89.75	267.18	N/A	-813.67	-6580.66	6531.93	6626.66	95.00	1.33	-0.33	-1.28
	12886.00	89.85	267.80	N/A	-817.79	-6674.57	6532.26	6720.57	94.00	0.67	0.11	0.66
	12981.00	89.88	270.32	N/A	-819.35	-6769.55	6532.49	6815.32	95.00	2.65	0.03	2.65
	13075.00	89.88	271.78	N/A	-817.62	-6863.53	6532.68	6908.79	94.00	1.55	0.00	1.55
	13170.00	89.91	272.26	N/A	-814.27	-6958.47	6532.86	7003.07	95.00	0.51	0.03	0.51
	13264.00	89.82	272.69	N/A	-810.22	-7052.38	6533.08	7096.26	94.00	0.47	-0.10	0.46
	13359.00	89.94	272.02	N/A	-806.31	-7147.30	6533.28	7190.47	95.00	0.72	0.13	-0.71
	13453.00	89.88	269.76	N/A	-804.85	-7241.29	6533.43	7283.97	94.00	2.41	-0.06	-2.40
	13548.00	89.94	268.85	N/A	-806.00	-7336.28	6533.57	7378.69	95.00	0.96	0.06	-0.96
	13642.00	89.91	268.61	N/A	-808.09	-7430.26	6533.70	7472.49	94.00	0.26	-0.03	-0.26
	13737.00	89.85	268.46	N/A	-810.52	-7525.22	6533.90	7567.31	95.00	0.17	-0.06	-0.16
	13831.00	89.78	268.97	N/A	-812.62	-7619.20	6534.20	7661.11	94.00	0.55	-0.07	0.54
	13926.00	89.85	269.27	N/A	-814.08	-7714.19	6534.51	7755.86	95.00	0.32	0.07	0.32
	14021.00	89.85	267.99	N/A	-816.35	-7809.16	6534.76	7850.66	95.00	1.35	0.00	-1.35
	14115.00	89.78	267.01	N/A	-820.45	-7903.07	6535.06	7944.57	94.00	1.05	-0.07	-1.04
	14209.00	89.82	268.88	N/A	-823.82	-7997.00	6535.39	8038.44	94.00	1.99	0.04	1.99
	14304.00	89.82	269.77	N/A	-824.94	-8091.99	6535.69	8133.16	95.00	0.94	0.00	0.94
	14398.00	90.00	271.52	N/A	-823.89	-8185.98	6535.83	8226.70	94.00	1.87	0.19	1.86
	14493.00	90.12	274.89	N/A	-818.58	-8280.82	6535.73	8320.70	95.00	3.55	0.13	3.55
	14588.00	89.91	272.84	N/A	-812.17	-8375.60	6535.71	8414.55	95.00	2.17	-0.22	-2.16
	14682.00	89.85	271.81	N/A	-808.36	-8469.52	6535.91	8507.78	94.00	1.10	-0.06	-1.10
	14777.00	89.91	272.27	N/A	-804.98	-8564.46	6536.11	8602.06	95.00	0.49	0.06	0.48
	14871.00	89.82	270.92	N/A	-802.36	-8658.42	6536.33	8695.43	94.00	1.44	-0.10	-1.44
	14966.00	90.06	268.03	N/A	-803.23	-8753.41	6536.43	8790.12	95.00	3.05	0.25	-3.04
	15060.00	89.85	265.22	N/A	-808.76	-8847.24	6536.50	8884.07	94.00	3.00	-0.22	-2.99
	15155.00	89.91	263.96	N/A	-817.72	-8941.81	6536.70	8979.07	95.00	1.33	0.06	-1.33
	15249.00	89.88	262.30	N/A	-828.96	-9035.13	6536.87	9073.02	94.00	1.77	-0.03	-1.77
	15344.00	89.69	260.68	N/A	-843.02	-9129.08	6537.23	9167.84	95.00	1.72	-0.20	-1.71
	15439.00	89.78	261.43	N/A	-857.79	-9222.92	6537.67	9262.62	95.00	0.80	0.09	0.79
	15533.00	89.82	260.98	N/A	-872.17	-9315.82	6538.00	9356.41	94.00	0.48	0.04	-0.48
	15627.00	89.63	259.17	N/A	-888.37	-9408.41	6538.45	9450.06	94.00	1.94	-0.20	-1.93
	15722.00	90.09	264.82	N/A	-901.59	-9502.44	6538.68	9544.90	95.00	5.97	0.48	5.95
	15816.00	90.22	273.50	N/A	-902.97	-9596.34	6538.42	9638.56	94.00	9.24	0.14	9.23
	15910.00	90.31	273.97	N/A	-896.84	-9690.14	6537.99	9731.46	94.00	0.51	0.10	0.50
	15991.00	90.52	271.75	N/A	-892.80	-9771.03	6537.40	9811.68	81.00	2.75	0.26	-2.74
Projection	16015.00	90.52	271.75	N/A	-892.07	-9795.02	6537.18	9835.51	24.00	0.00	0.00	0.00