



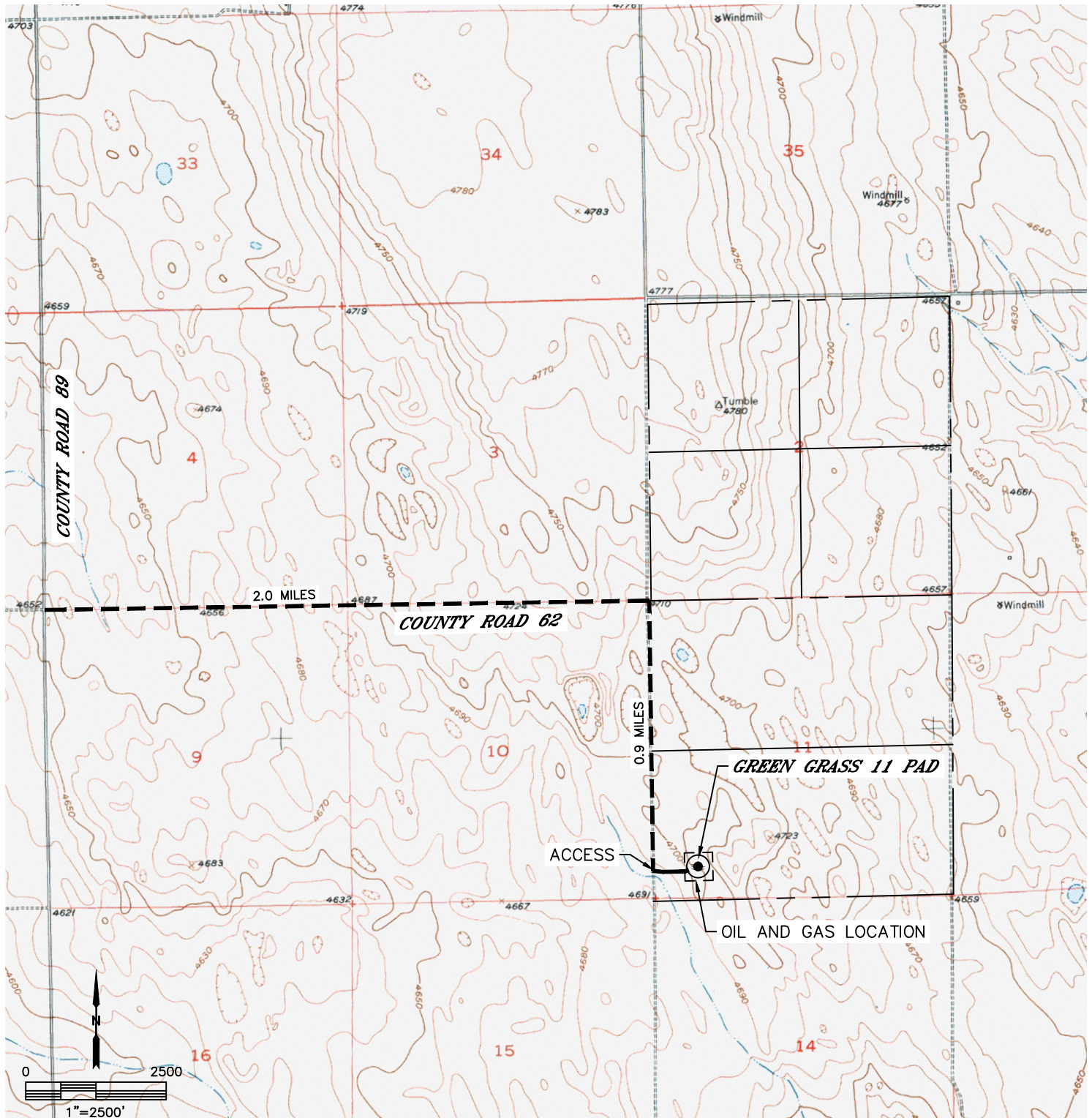
Lat40°, Inc. 6250 W. 10th Street, Unit 2, Greeley, CO 970-515-5294

ACCESS ROAD MAP GREEN GRASS 11 PAD

SECTION: 11
TOWNSHIP: 5N
RANGE: 61W
6TH. P.M.
WELD COUNTY, CO

DRIVING DIRECTIONS TO GREEN GRASS 11 PAD

FROM THE INTERSECTION OF COUNTY ROAD 89 AND COUNTY ROAD 62, DRIVE EAST ALONG COUNTY ROAD 62 FOR 2.0 MILES TO THE EXISTING ACCESS ROAD. TURN SOUTH AND DRIVE ALONG ACCESS ROAD FOR 0.9 MILES TO THE ENTRANCE OF THE GREEN GRASS 11 PAD. TURN EAST ALONG ACCESS TO THE PROPOSED PAD.





Lat40°, Inc. 6250 W. 10th Street, Unit 2, Greeley, CO 970-515-5294

ACCESS ROAD MAP

GREEN GRASS 11 PAD

SECTION: 11
TOWNSHIP: 5N
RANGE: 61W
6TH. P.M.
WELD COUNTY, CO

