

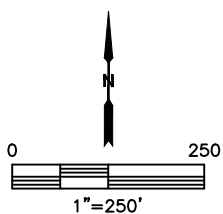
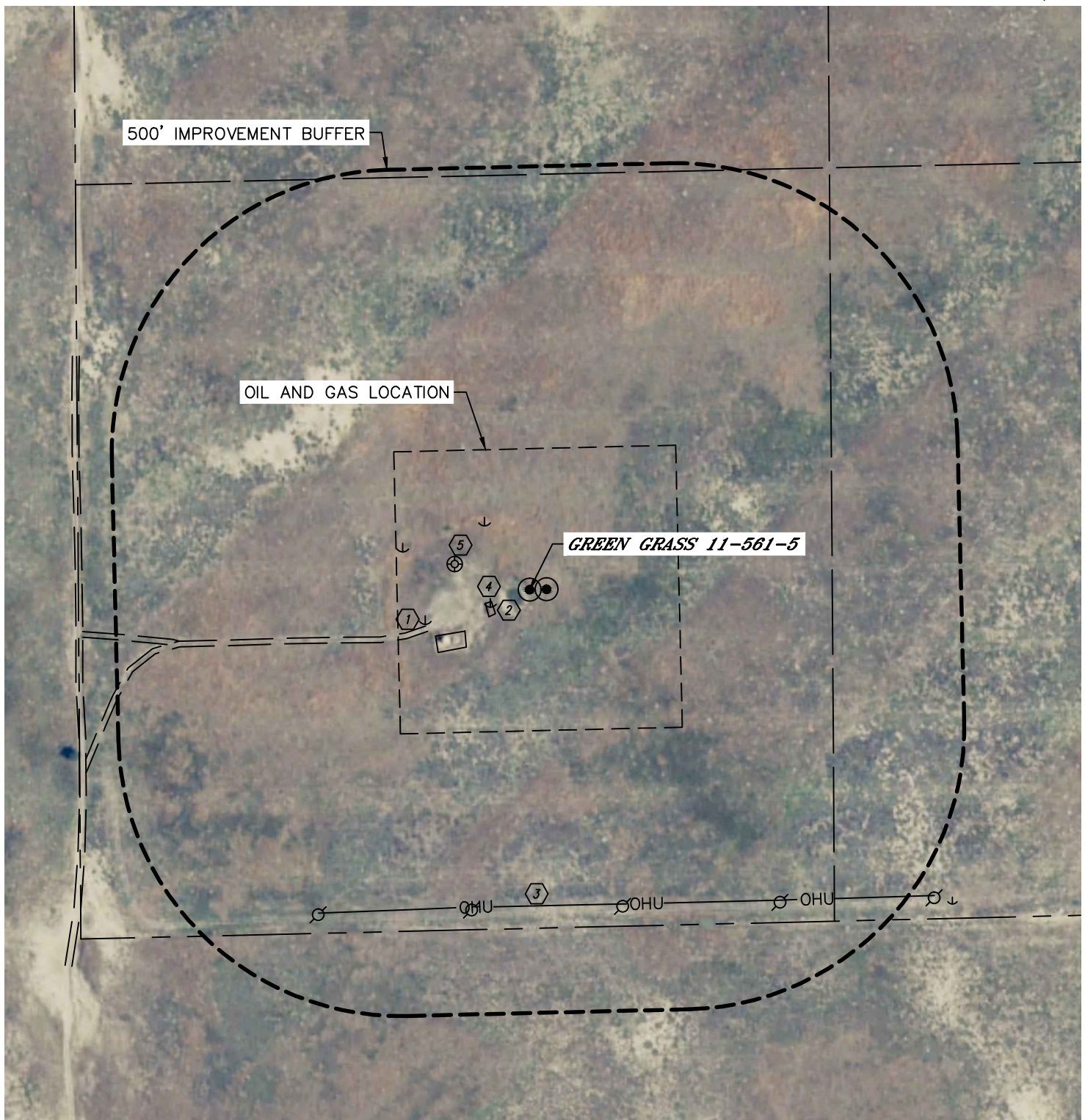


Lat40°, Inc. 6250 W. 10th Street, Unit 2, Greeley, CO 970-515-5294

# LOCATION DRAWING

**GREEN GRASS 11 PAD**

SECTION: 11  
TOWNSHIP: 5N  
RANGE: 61W  
6TH. P.M.  
WELD COUNTY, CO












Lat40°, Inc. 6250 W. 10th Street, Unit 2, Greeley, CO 970-515-5294

# LOCATION DRAWING

## GREEN GRASS 11 PAD

SECTION: 11  
TOWNSHIP: 5N  
RANGE: 61W  
6TH. P.M.  
WELD COUNTY, CO

IMPROVEMENTS:  
(MEASURED FROM THE PROPOSED GREEN GRASS 11-561-5 WELL LOCATION)

-  NO BUILDING UNITS WITHIN 500' IMPROVEMENT BUFFER
-  NO BUILDINGS WITHIN 500' IMPROVEMENT BUFFER
-  DIRT ROAD 195' SW
-  EXISTING PRODUCTION EQUIPMENT 70' & 136' SW
-  OVERHEAD UTILITY 560' S
-  ANCHOR 71' & 191' SW, 151' & 240 NW
-  EXISITING WELL 141' NW