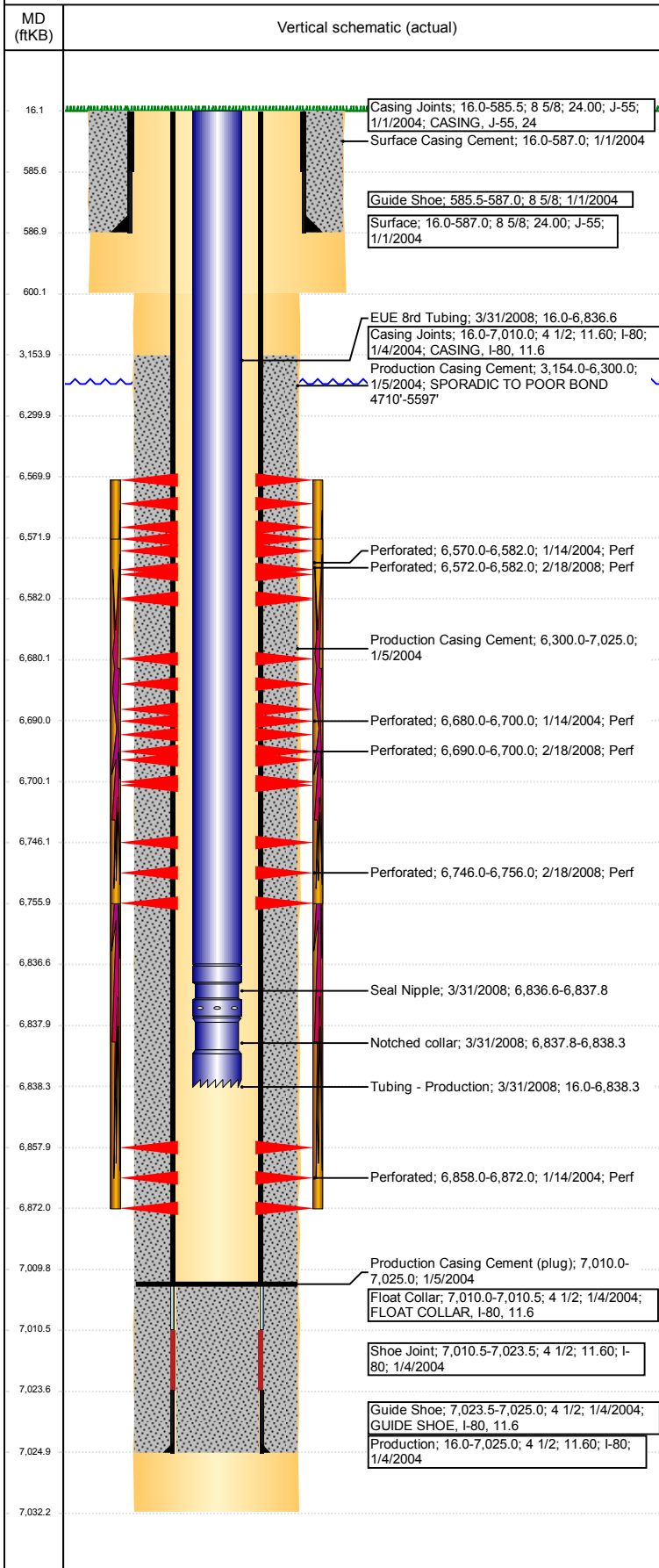


**Well Name: FARMLAND 16-32**

VERTICAL - ORIGINAL HOLE, 9/19/2017 11:30:35 AM



## Well Header

API 05-123-21853	Business Unit DJ BASIN	District 15	Well Config VERTICAL
Original KB Elevation (ft) 4,646	KB - GL / MSL (ftKB) 16.00	Spud Date 12/31/2003	P & A Date

Comment

Directions To Well

CR 53 & CR 62 1/2, S 1/2, W INTO

## Congressional Location

Quarter 3 SE	Quarter 4 SE	Section 32	Township 6	Twnshp N/S Dir N	Range 64	Range E/W Dir W
-----------------	-----------------	---------------	---------------	---------------------	-------------	--------------------

## Bottom Hole Location

North-South Distance (ft)	From N or S Line	East-West Distance (ft)	From E or W Line
---------------------------	------------------	-------------------------	------------------

## Plug Back Total Depths

Date	Depth (ftKB)	Method	Com
1/4/2004	7,010.0	CASING TALLY	TOP OF FLOAT COLLAR
1/14/2004	6,998.0	CASED HOLE LOG	DEPTH LOGGER ON CBL
1/20/2004	6,998.0	TAG	CLEAN OUT
3/28/2008	7,010.0	TAG	DRILL PLUG AND PUSH TO 7010'

## Wellbore Sections

Section Des	Size (in)	Act Top, MD (ftKB)	Act Btm, MD (ftKB)
SURFACE	12 1/4	16	600
PRODUCTION	7 7/8	600	7,032

## Zone Statuses

Zone Name	Status Date	Status	Fluid Type	Job	Prod Method
NIOBRARA	2/18/2004	PR		DRILLING/CO...	
NIOBRARA	2/25/2008	PR		RE-FRAC, 2/7/...	
NIOBRARA	4/7/2008	PR		COMMINGLED...	
CODELL	2/18/2004	PR		DRILLING/CO...	
CODELL	2/8/2008	TA		RE-FRAC, 2/7/...	
CODELL	4/7/2008	PR		COMMINGLED...	

## Casing Strings

### Surface, 587.0ftKB

Casing Description	Run Date	OD (in)	Wt/Len (lb/ft)	Grade	Top, MD (ftKB)	MD (ftKB)
Surface	1/1/2004	8 5/8	24.00	J-55	16.0	587.0

### Production, 7,025.0ftKB

Casing Description	Run Date	OD (in)	Wt/Len (lb/ft)	Grade	Top, MD (ftKB)	MD (ftKB)
Production	1/4/2004	4 1/2	11.60	I-80	16.0	7,025.0

## Cement

Description	Top Depth (ftKB)	Bottom Depth (ftKB)
Surface Casing Cement	16.0	587.0
Production Casing Cement	3,154.0	6,300.0
Production Casing Cement	6,300.0	7,025.0

## Tubing Strings

Tubing Description	Run Date	String...	ID (in)	Wt (lb/ft)	Grade	Len (ft)	Set De...
PRODUCTION TUBING	1/20/2004	2 3/8	2.00	4.70	J-55	6,812.00	
Tubing - Production	3/31/2008	2 3/8	2.00	4.70	J-55	6,822.30	

## Tubing Components

Item Des	OD (in)	Wt (lb/ft)	Grade	Jts	Len (ft)	Btm (ftKB)	Btm (TVD) (ftKB)
EUE 8rd Tubing	2 3/8	4.70	J-55	221	6,820.65	6,836.6	
Seal Nipple	2 3/8			1	1.15	6,837.8	
Notched collar	2 3/8				0.50	6,838.3	

## Other In Hole

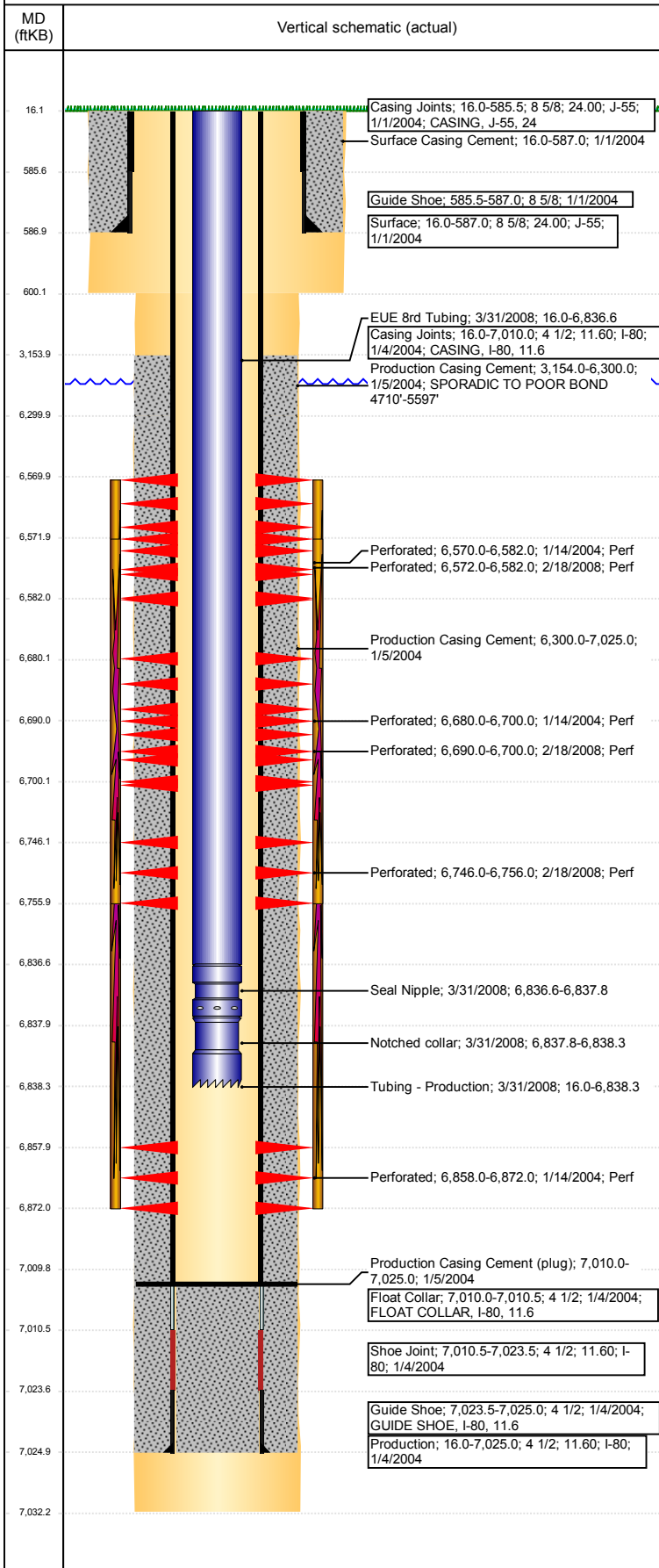
Run Date	Des	OD (in)	Top (ftKB)	Btm (ftKB)

## Logs

Date	Type	Top, MD (ftKB)	Btm, MD (ftKB)
1/4/2004	COMPENSATED DENSITY	587.0	7,012.0
1/4/2004	INDUCTION	587.0	7,032.0
1/14/2004	CBL/CCL/GR	3,000.0	6,998.0
1/14/2004	PERFORATION	3,000.0	6,998.0

**Well Name: FARMLAND 16-32**

VERTICAL - ORIGINAL HOLE, 9/19/2017 11:30:35 AM



## Perforation Data

Linked Zone	Bnch/St g	Sum of Entered Shot Total	Top (ftKB)	Btm (ftKB)	Date
NIOBRARA, ORIGINAL HOLE	A	10	6,570.00	6,582.00	1/14/2004
NIOBRARA, ORIGINAL HOLE	A	20	6,572.00	6,582.00	2/18/2008
NIOBRARA, ORIGINAL HOLE	B	10	6,680.00	6,700.00	1/14/2004
NIOBRARA, ORIGINAL HOLE	B	20	6,690.00	6,700.00	2/18/2008
NIOBRARA, ORIGINAL HOLE	C	20	6,746.00	6,756.00	2/18/2008
CODELL, ORIGINAL HOLE		24	6,858.00	6,872.00	1/14/2004
<b>Total (Sum)</b>		<b>104</b>			

## Stimulation Intervals

Start Date 1/16/2004	Primary Job Type DRILLING/COMPLETION - ORIGINAL	
Technical Result	Tech Result Details	Tech Result Note
Comment LIMITED ENTRY FRAC SCREENED OUT 2/3 INTO FLUSH		
Start Date 2/21/2008	Primary Job Type RE-FRAC	
Technical Result	Tech Result Details	Tech Result Note
Comment		