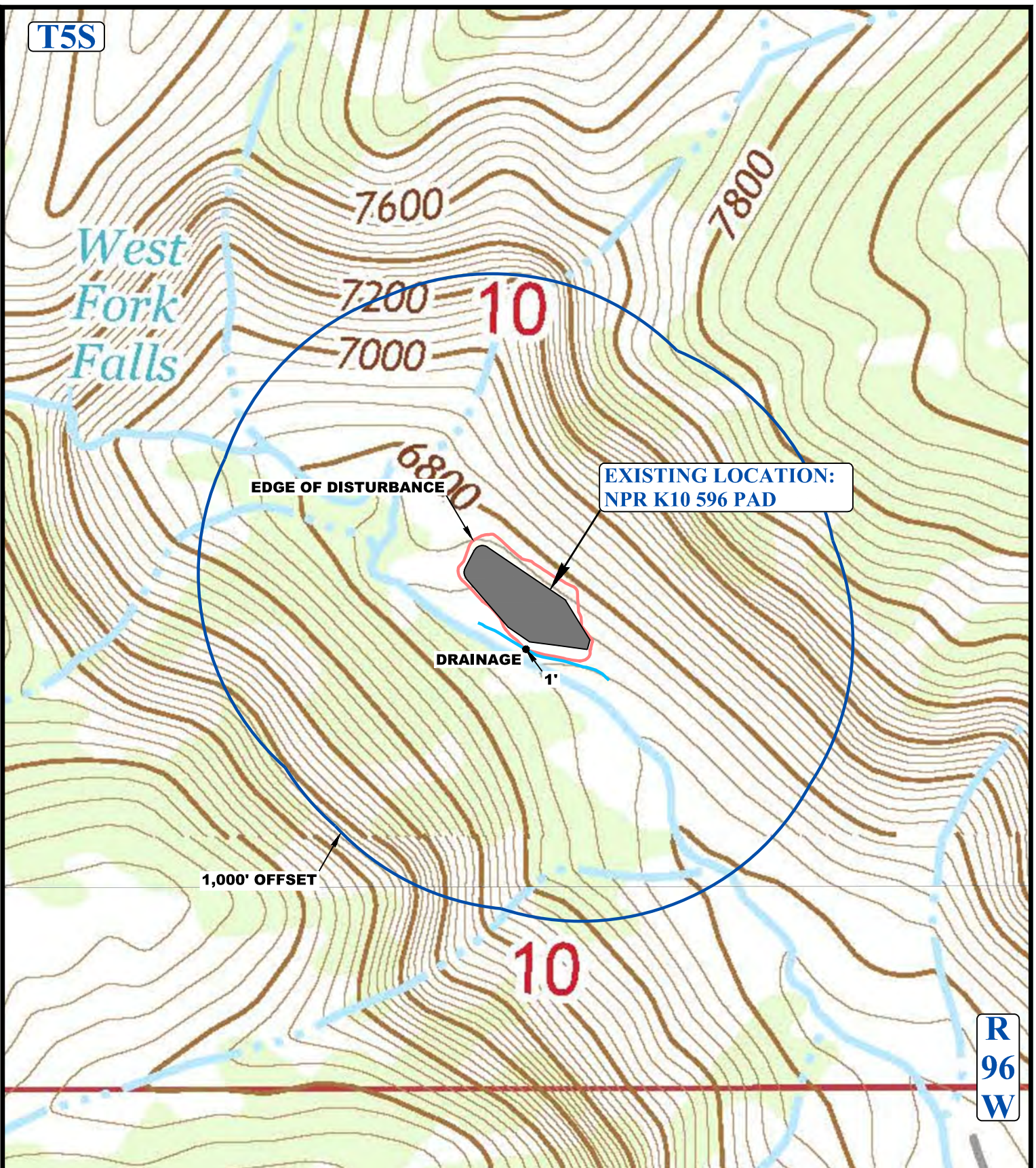


T5S



LEGEND:

- EXISTING DRAINAGE
- 1000' OFFSET BOUNDARY
- EDGE OF DISTURBANCE
- FLOOD PLAINS



UELS, LLC
Corporate Office * 85 South 200 East
Vernal, UT 84078 * (435) 789-1017



Caerus Oil & Gas LLC

NPR K10 596 PAD
NE 1/4 SW 1/4, SECTION 10, T5S, R96W, 6th P.M.
GARFIELD COUNTY, COLORADO

SURVEYED BY	BART HUNTING, G.M.	08-15-17	SCALE
DRAWN BY	Z.T.	08-25-17	1 : 6,000
HYDROLOGY MAP			TOPO W