

**PROPOSED LOCATION:
COTTONWOOD CREEK
#4-65 27-28 3CH, 3DH, 4AH
& 4BH**

SEE TOPO "B"

REV: 3 08-15-17 K.B. (NAME CHANGE)

LEGEND:

 **PROPOSED LOCATION**



ConocoPhillips Company

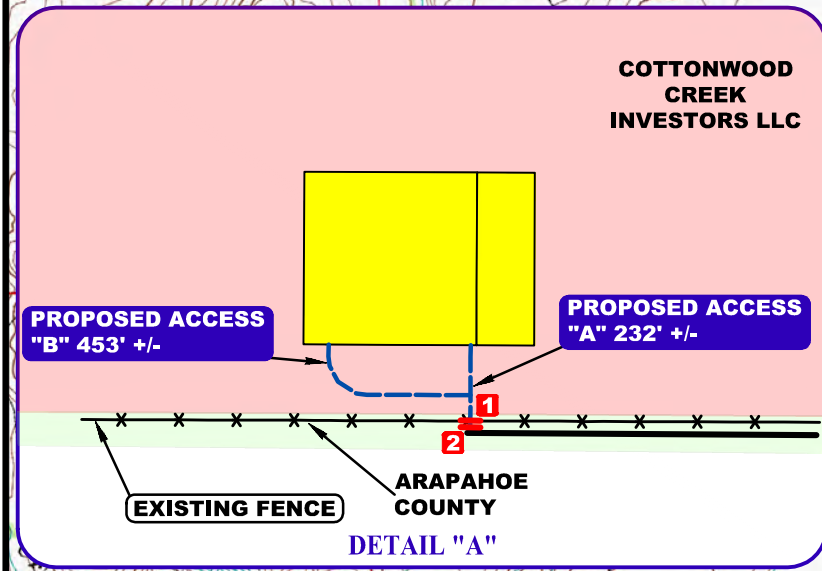
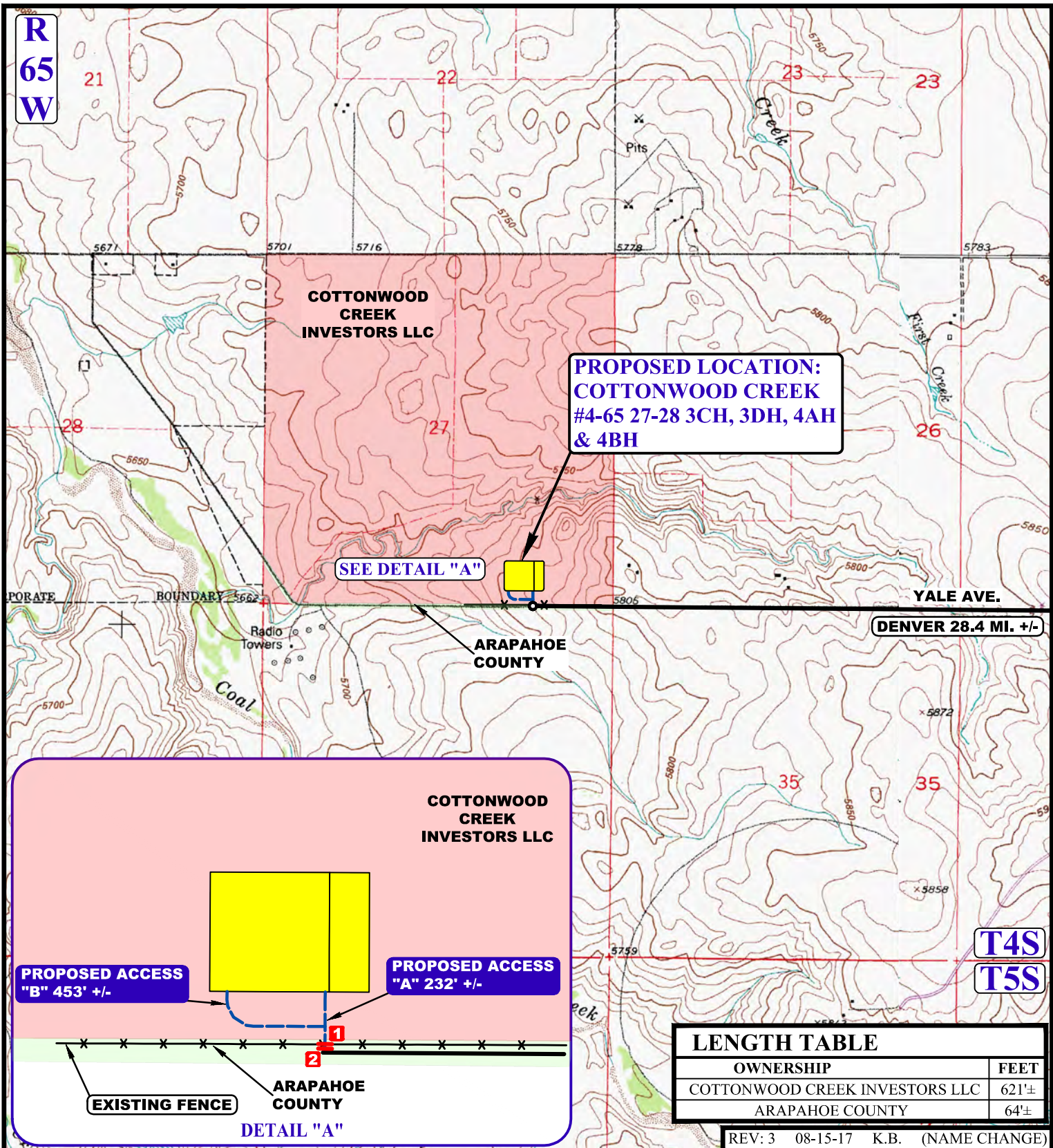
**COTTONWOOD CREEK #4-65 27-28 3CH, 3DH, 4AH & 4BH
SW 1/4 SE 1/4, SECTION 27, T4S, R65W, 6th P.M.
ARAPAHOE COUNTY, COLORADO**



UELS, LLC
Corporate Office * 85 South 200 East
Vernal, UT 84078 * (435) 789-1017

SURVEYED BY	G.W., G.B.	07-07-17	SCALE
DRAWN BY	J.L.G.	06-14-07	1 : 100,000
ACCESS ROAD MAP			TOPO A

**R
65
W**



LENGTH TABLE	
OWNERSHIP	FEET
COTTONWOOD CREEK INVESTORS LLC	621'±
ARAPAHOE COUNTY	64'±

REV: 3 08-15-17 K.B. (NAME CHANGE)

NOTE: PARCEL DATA SHOWN HAS BEEN OBTAINED FROM VARIOUS SOURCES AND SHOULD BE USED FOR MAPPING, GRAPHIC AND PLANNING PURPOSES ONLY. NO WARRANTY IS MADE BY UINTAH ENGINEERING AND LAND SURVEYING (UELS) FOR ACCURACY OF THE PARCEL DATA.

- LEGEND:**
- EXISTING ROAD
 - PROPOSED ROAD
 - EXISTING FENCE
 - INSTALL CATTLE GUARD
 - INSTALL 18" CULVERT



ConocoPhillips Company

COTTONWOOD CREEK #4-65 27-28 3CH, 3DH, 4AH & 4BH
 SW 1/4 SE 1/4, SECTION 27, T4S, R65W, 6th P.M.
 ARAPAHOE COUNTY, COLORADO

SURVEYED BY	G.W., G.B.	07-07-17	SCALE
DRAWN BY	J.L.G.	06-14-07	1 : 24,000
ACCESS ROAD MAP			TOPO B



UELS, LLC
 Corporate Office * 85 South 200 East
 Vernal, UT 84078 * (435) 789-1017