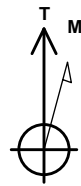


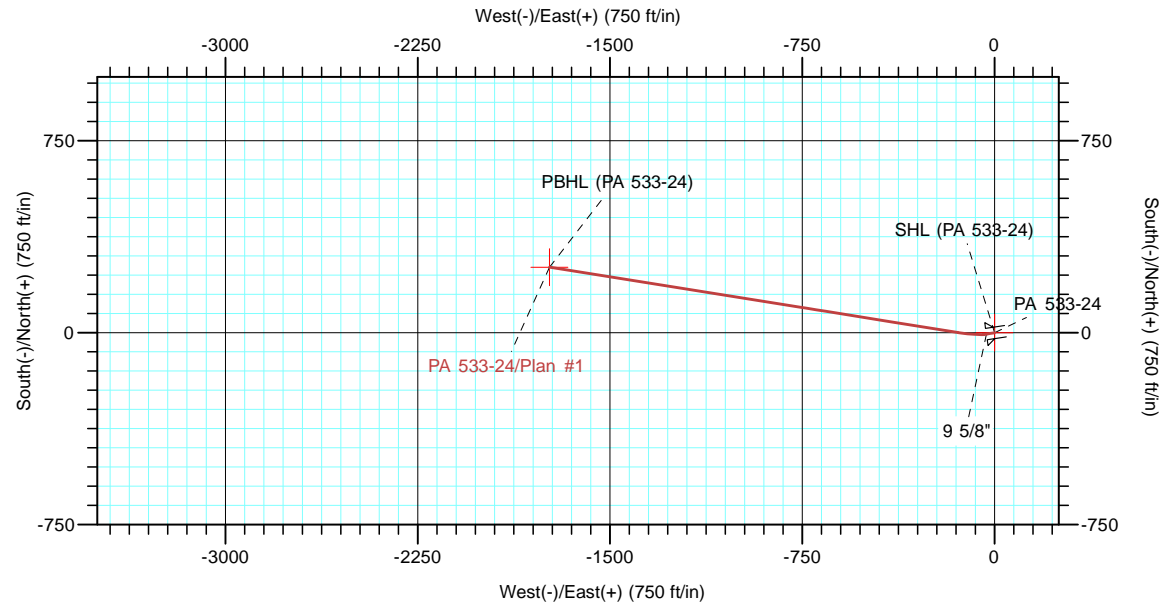
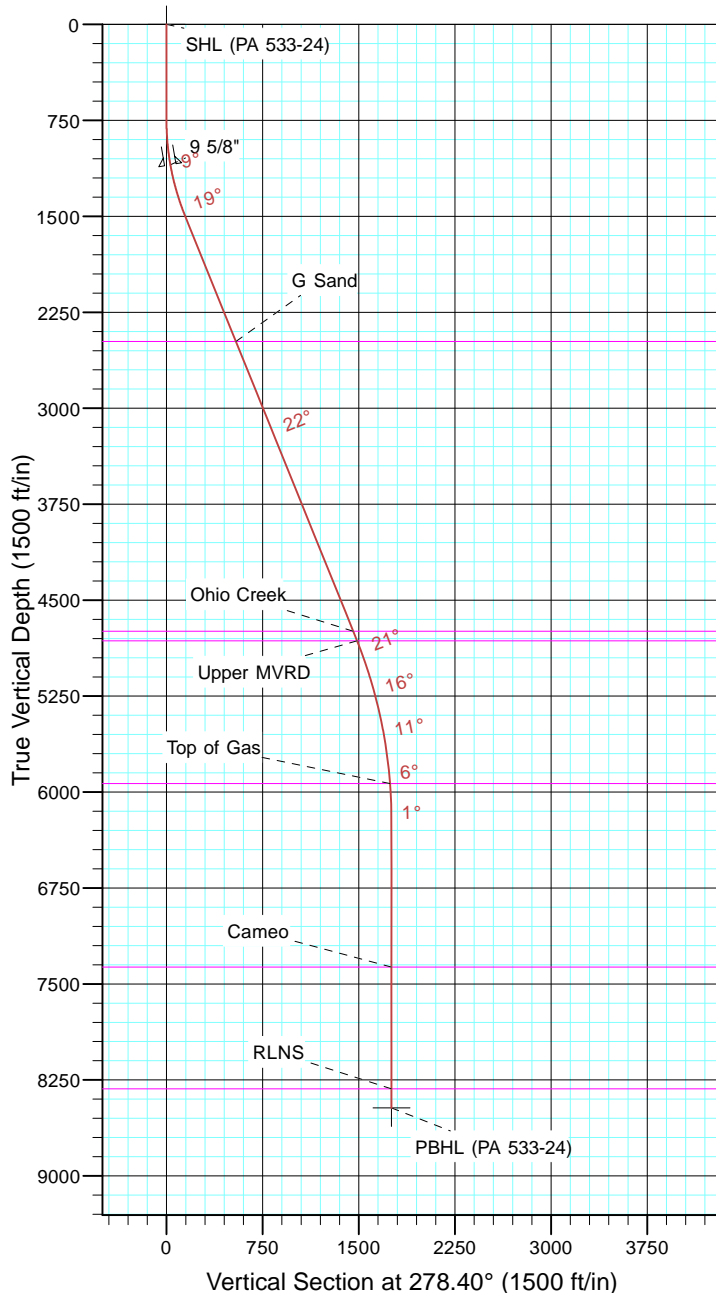
TEP Rocky Mountain LLC

Project: Garfield County, CO NAD83
 Site: RWF 13-19
 Well: PA 533-24
 Wellbore: OH
 Design: Plan #1



Azimuths to True North
 Magnetic North: 9.69°

Magnetic Field
 Strength: 51556.1nT
 Dip Angle: 65.61°
 Date: 5/9/2017
 Model: IGRF2015



CASING DETAILS			
TVD	MD	Name	Size
1098.0	1100.0	9 5/8"	9.625

FORMATION TOP DETAILS		
TVDPath	MDPath	Formation
2479.0	2575.1	G Sand
4744.0	5018.1	Ohio Creek
4819.0	5099.0	Upper MVRD
5934.0	6247.5	Top of Gas
7369.0	7682.7	Cameo
8319.0	8632.7	RLNS

DESIGN TARGET DETAILS							
Name	TVD	+N/-S	+E/-W	Northing	Easting	Latitude	Longitude
SHL (PA 533-24)	0.0	0.0	0.0	1618785.00	2312525.60	39° 30' 25.274 N	107° 56' 12.519 W
PBHL (PA 533-24)	8469.0	256.4	-1736.0	1619087.90	2310797.10	39° 30' 27.807 N	107° 56' 34.668 W

SECTION DETAILS										
Sec	MD	Inc	Azi	TVD	+N/-S	+E/-W	Dleg	TFace	VSect	Target
1	0.0	0.00	0.00	0.0	0.0	0.0	0.00	0.00	0.0	
2	750.0	0.00	0.00	750.0	0.0	0.0	0.00	0.00	0.0	
3	1083.3	10.00	260.00	1081.6	-5.0	-28.6	3.00	260.00	27.5	
4	1515.2	22.00	279.12	1496.3	1.3	-145.9	3.00	33.18	144.5	
5	5070.8	22.00	279.12	4792.8	212.3	-1461.3	0.00	0.00	1476.6	
6	6537.7	0.00	0.00	6224.0	256.4	-1736.0	1.50	180.00	1754.8	
7	8782.7	0.00	0.00	8469.0	256.4	-1736.0	0.00	0.00	1754.8	PBHL (PA 533-24)