

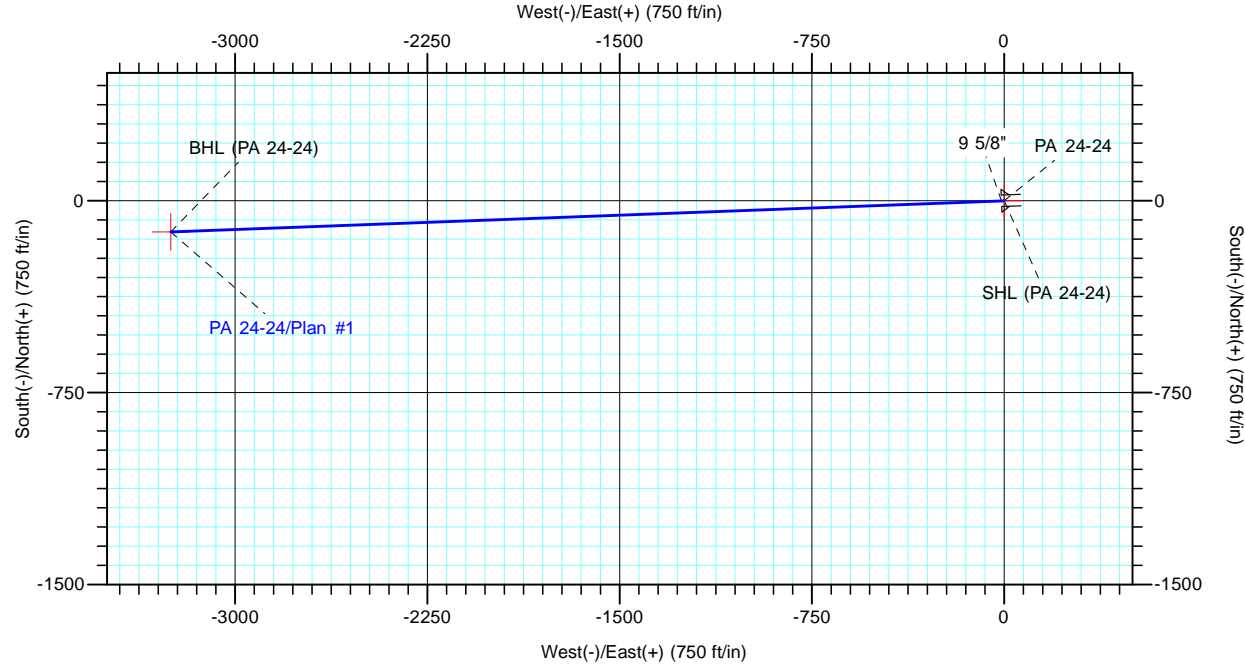
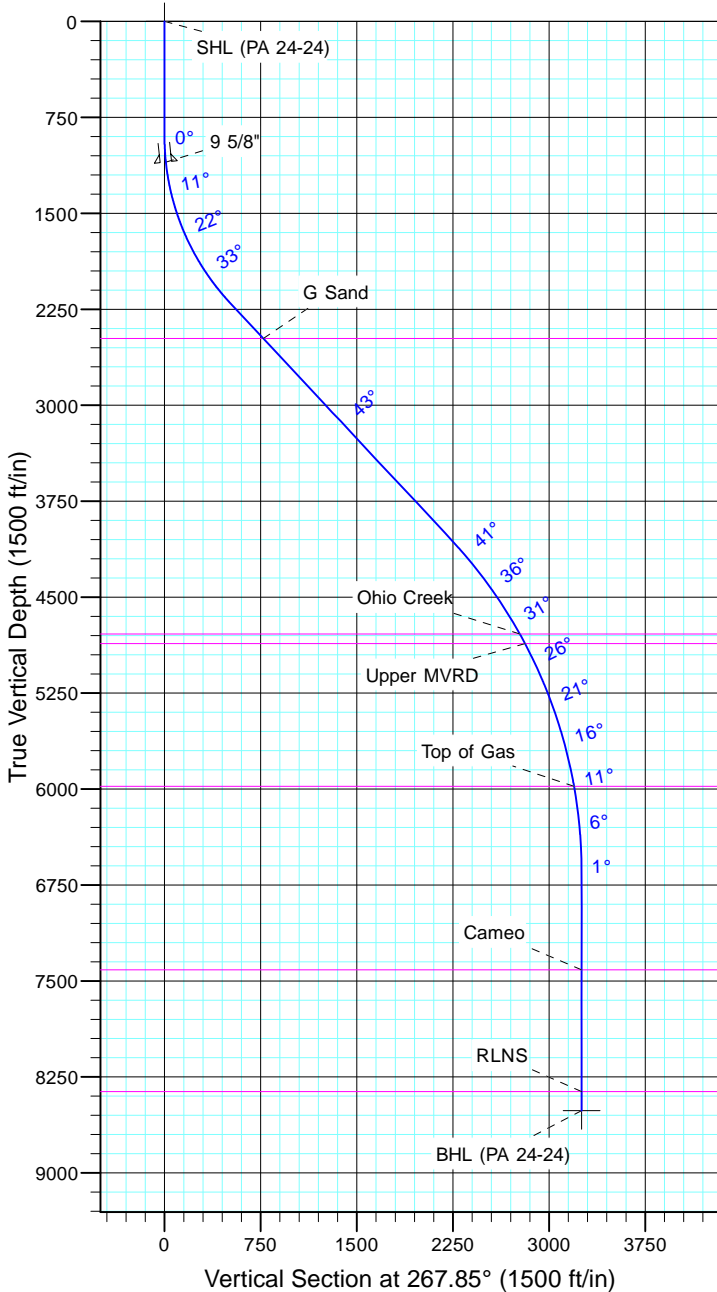
TEP Rocky Mountain LLC

Project: Garfield County, CO NAD83
 Site: RWF 13-19
 Well: PA 24-24
 Wellbore: OH
 Design: Plan #1



Azimuths to True North
 Magnetic North: 9.69°

Magnetic Field
 Strength: 51556.4snT
 Dip Angle: 65.61°
 Date: 5/8/2017
 Model: IGRF2015



TVD	CASING DETAILS	MD	Name	Size
1099.6		1100.0	9 5/8"	9.625

FORMATION TOP DETAILS		
TVDPPath	MDPath	Formation
2479.0	2711.4	G Sand
4789.0	5774.4	Ohio Creek
4864.0	5859.7	Upper MVRD
5979.0	7043.2	Top of Gas
7414.0	8481.7	Cameo
8364.0	9431.7	RLNS

DESIGN TARGET DETAILS							
Name	TVD	+N/-S	+E/-W	Northing	Easting	Latitude	Longitude
SHL (PA 24-24)	0.0	0.0	0.0	1618780.80	2312540.00	39° 30' 25.236 N	107° 56' 12.334 W
BHL (PA 24-24)	8514.0	-122.1	-3251.2	1618745.90	2309286.70	39° 30' 24.027 N	107° 56' 53.815 W

SECTION DETAILS										
Sec	MD	Inc	Azi	TVD	+N/-S	+E/-W	Dleg	TFace	VSect	Target
1	0.0	0.00	0.00	0.0	0.0	0.0	0.00	0.00	0.0	
2	900.0	0.00	0.00	900.0	0.0	0.0	0.00	0.00	0.0	
3	2333.3	43.00	267.85	2202.5	-19.3	-512.7	3.00	267.85	513.0	
4	4847.1	43.00	267.85	4041.0	-83.6	-2225.8	0.00	0.00	2227.4	
5	7713.7	0.00	0.00	6646.0	-122.1	-3251.2	1.50	180.00	3253.5	
6	9581.7	0.00	0.00	8514.0	-122.1	-3251.2	0.00	0.00	3253.5	BHL (PA 24-24)