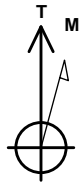


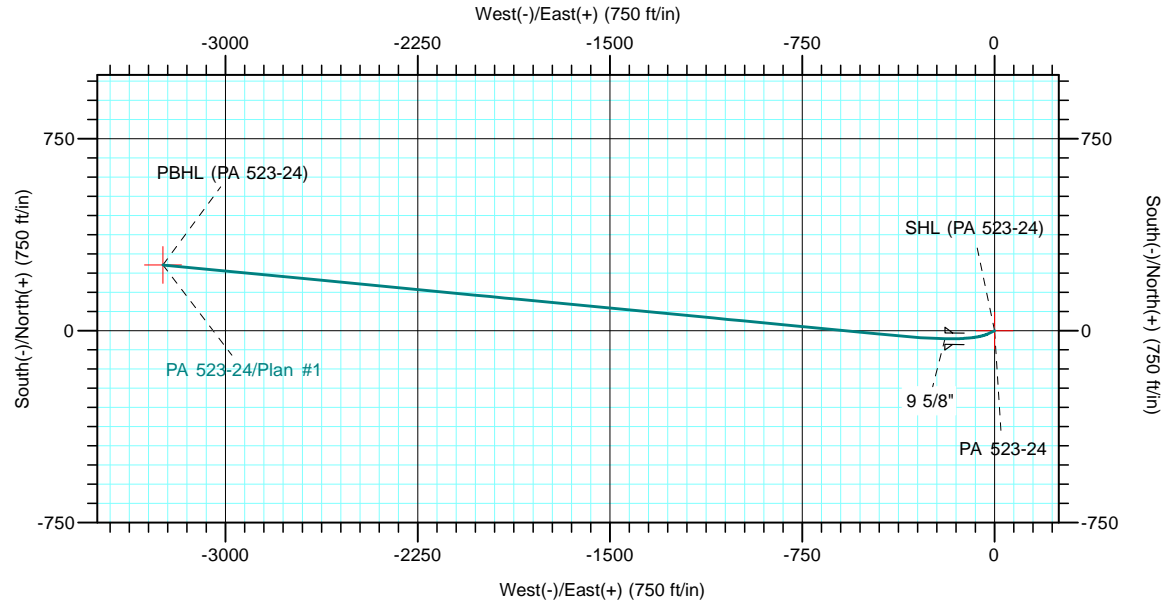
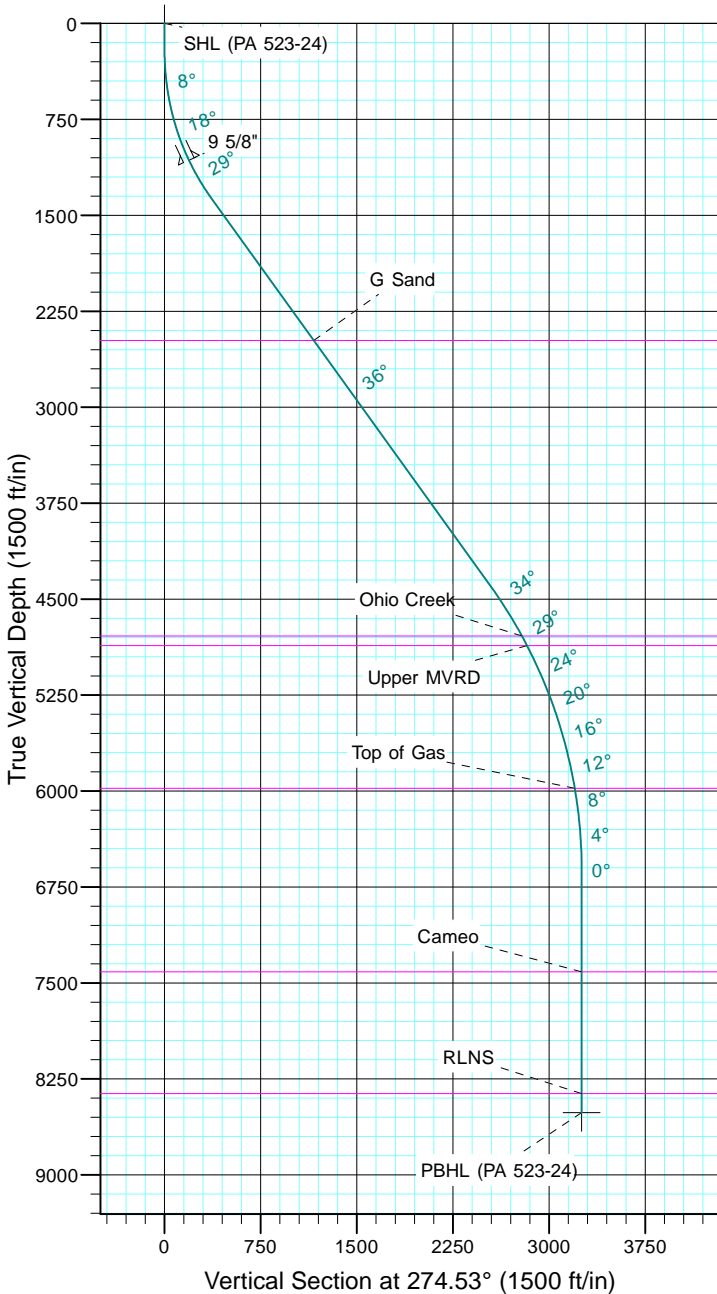
TEP Rocky Mountain LLC

Project: Garfield County, CO NAD83
 Site: RWF 13-19
 Well: PA 523-24
 Wellbore: OH
 Design: Plan #1



Azimuths to True North
 Magnetic North: 9.69°

Magnetic Field
 Strength: 51556.1snT
 Dip Angle: 65.61°
 Date: 5/9/2017
 Model: IGRF2015



CASING DETAILS				FORMATION TOP DETAILS			
TVD	MD	Name	Size	TVDPath	MDPath	Formation	
1070.4	1100.0	9 5/8"	9.625	2479.0	2814.1	G Sand	
				4789.0	5638.9	Ohio Creek	
				4864.0	5723.8	Upper MVRD	
				5979.0	6904.1	Top of Gas	
				7414.0	8342.1	Cameo	
				8364.0	9292.1	RLNS	

Name	TVD	+N/-S	DESIGN TARGET DETAILS				Latitude	Longitude
			+E/-W	Northing	Easting			
SHL (PA 523-24)	0.0	0.0	0.0	1618782.90	2312532.80	39° 30' 25.255 N	107° 56' 12.426 W	
PBHL (PA 523-24)	8514.0	256.9	-3244.1	1619126.70	2309296.80	39° 30' 27.792 N	107° 56' 53.817 W	

Sec	MD	Inc	Azi	TVD	SECTION DETAILS					
					+N/-S	+E/-W	Dleg	TFace	Vsect	Target
1	0.0	0.00	0.00	0.0	0.0	0.0	0.00	0.00	0.0	
2	200.0	0.00	0.00	200.0	0.0	0.0	0.00	0.00	0.0	
3	533.3	10.00	245.00	531.6	-12.3	-26.3	3.00	245.00	25.2	
4	1450.1	35.71	275.51	1371.5	-20.4	-371.4	3.00	39.92	368.6	
5	5164.6	35.71	275.51	4387.6	187.9	-2529.3	0.00	0.00	2536.2	
6	7545.1	0.00	0.00	6617.0	256.9	-3244.1	1.50	180.00	3254.2	
7	9442.1	0.00	0.00	8514.0	256.9	-3244.1	0.00	0.00	3254.2	PBHL (PA 523-24)