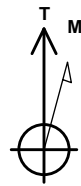


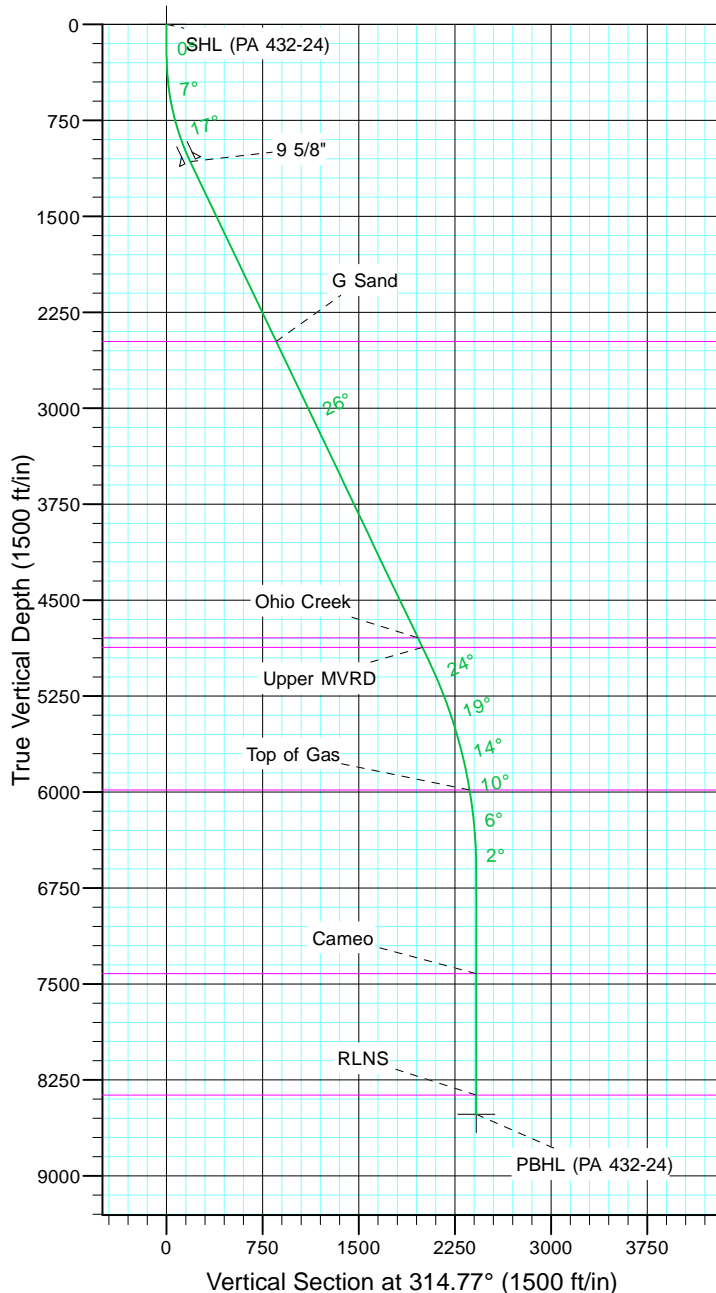
TEP Rocky Mountain LLC

Project: Garfield County, CO NAD83
Site: RWF 13-19
Well: PA 432-24
Wellbore: OH
Design: Plan #1



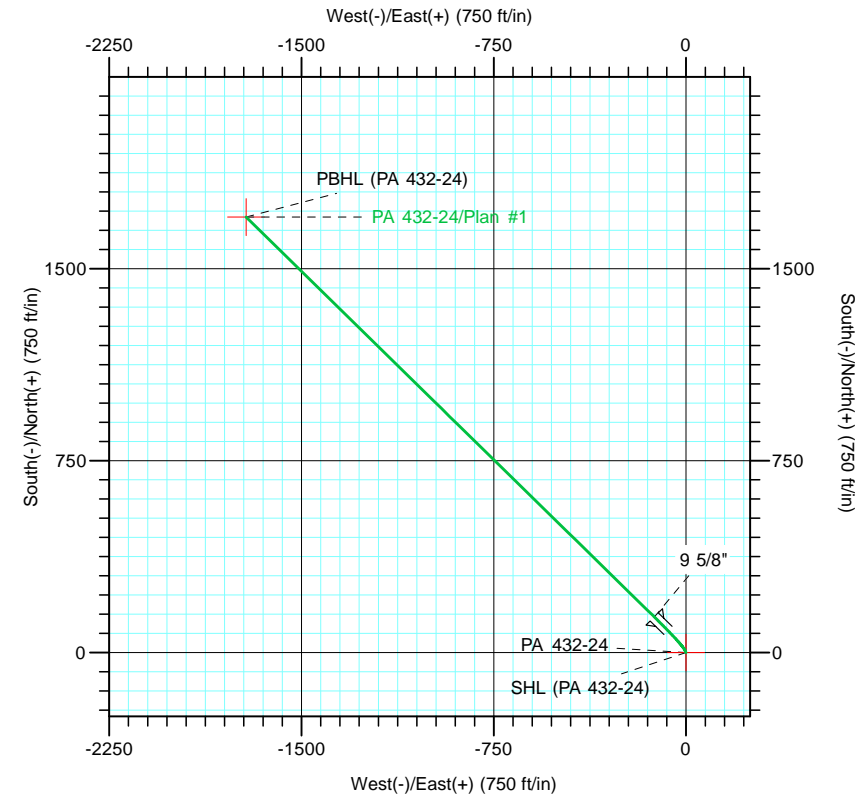
Azimuths to True North
Magnetic North: 9.69°

Magnetic Field
Strength: 51556.1snT
Dip Angle: 65.61°
Date: 5/9/2017
Model: IGRF2015



CASING DETAILS			
TVD	MD	Name	Size
1072.8	1100.0	9 5/8"	9.625

FORMATION TOP DETAILS		
TVDPath	MDPath	Formation
2479.0	2657.9	G Sand
4794.0	5222.9	Ohio Creek
4869.0	5306.0	Upper MVRD
5984.0	6484.6	Top of Gas
7419.0	7922.5	Cameo
8369.0	8872.5	RLNS



DESIGN TARGET DETAILS						
Name	TVD	+N/-S	+E/-W	Northing	Easting	Latitude
SHL (PA 432-24)	0.0	0.0	0.0	1618800.90	2312506.80	39° 30' 25.426 N
PBHL (PA 432-24)	8519.0	1701.9	-1715.7	1620548.20	2310837.40	39° 30' 42.246 N

SECTION DETAILS										
Sec	MD	Inc	Azi	TVD	+N/-S	+E/-W	Dleg	TFace	VFace	Target
1	0.0	0.00	0.00	0.0	0.0	0.0	0.00	0.00	0.0	
2	180.0	0.00	0.00	180.0	0.0	0.0	0.00	0.00	0.0	
3	380.0	4.00	337.50	379.8	6.4	-2.7	2.00	337.50	6.4	
4	1109.2	25.50	314.47	1081.1	141.5	-125.9	3.00	-26.88	189.1	
5	5418.3	25.50	314.47	4970.4	1441.2	-1450.0	0.00	0.00	2044.4	
6	7118.5	0.00	0.00	6615.0	1701.9	-1715.7	1.50	180.00	2416.6	
7	9022.5	0.00	0.00	8519.0	1701.9	-1715.7	0.00	0.00	2416.6	PBHL (PA 432-24)