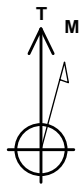


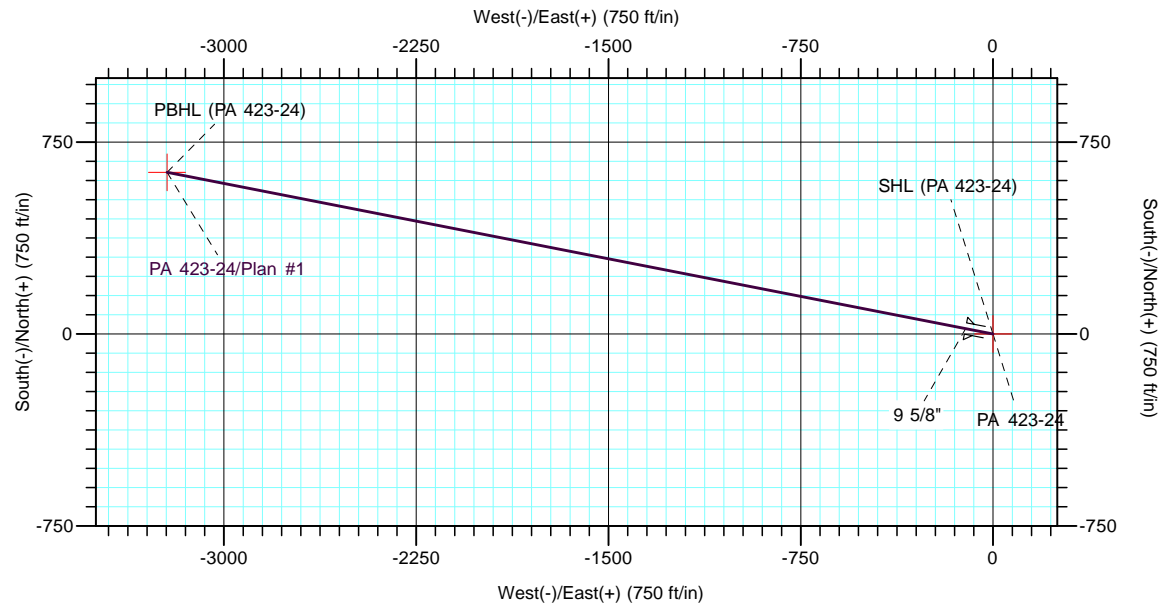
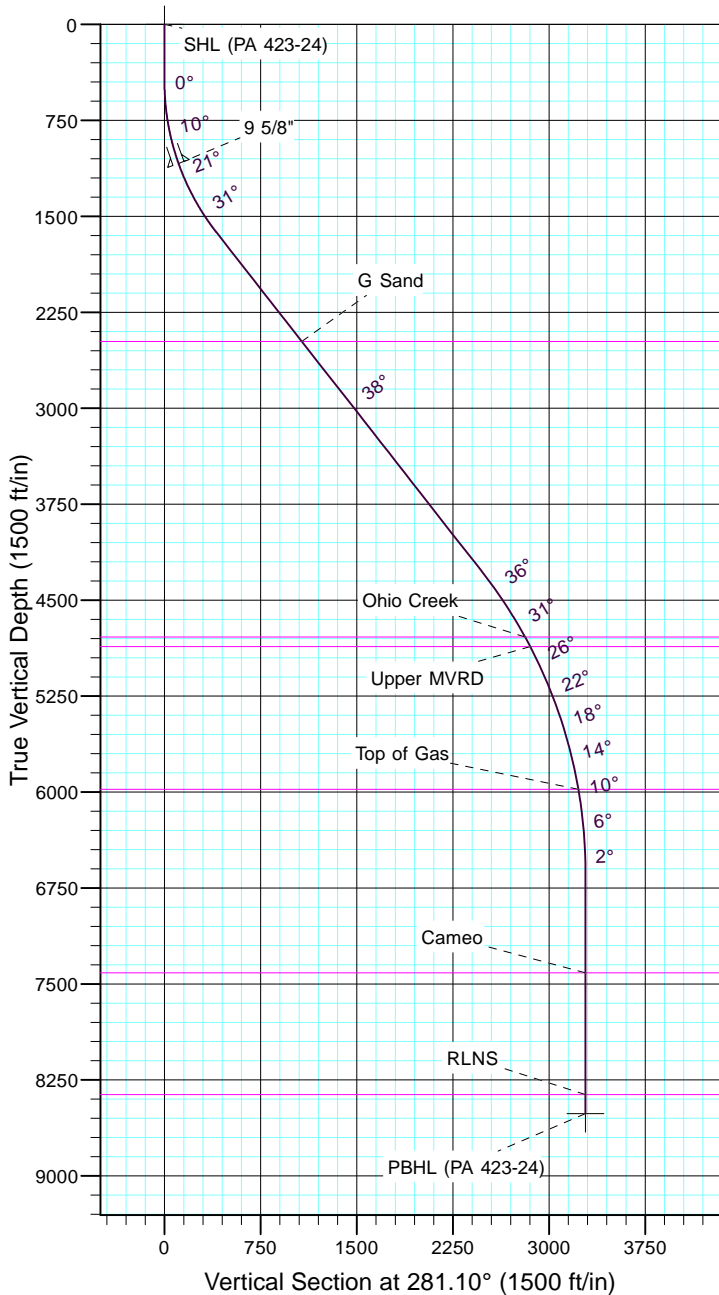
TEP Rocky Mountain LLC

Project: Garfield County, CO NAD83
 Site: RWF 13-19
 Well: PA 423-24
 Wellbore: OH
 Design: Plan #1



Azimuths to True North
 Magnetic North: 9.69°

Magnetic Field
 Strength: 51556.1snT
 Dip Angle: 65.61°
 Date: 5/9/2017
 Model: IGRF2015



CASING DETAILS				FORMATION TOP DETAILS		
TVD	MD	Name	Size	TVDPath	MDPath	Formation
1087.5	1100.0	9 5/8"	9.625	2479.0	2799.3	G Sand
				4789.0	5694.6	Ohio Creek
				4864.0	5779.6	Upper MVRD
				5979.0	6960.8	Top of Gas
				7414.0	8399.0	Cameo
				8364.0	9349.0	RLNS

DESIGN TARGET DETAILS								
Name	TVD	+N/-S	+E/-W	Northing	Easting	Latitude	Longitude	
SHL (PA 423-24)	0.0	0.0	0.0	1618789.20	2312511.20	39° 30' 25.311 N	107° 56' 12.704 W	
PBHL (PA 423-24)	8514.0	632.2	-3222.3	1619507.60	2309307.00	39° 30' 31.558 N	107° 56' 53.818 W	

SECTION DETAILS										
Sec	MD	Inc	Azi	TVD	+N/-S	+E/-W	Dleg	TFace	VSect	Target
1	0.0	0.00	0.00	0.0	0.0	0.0	0.00	0.00	0.0	
2	450.0	0.00	0.00	450.0	0.0	0.0	0.00	0.00	0.0	
3	1716.6	38.00	281.10	1625.8	77.9	-397.3	3.00	281.10	404.8	
4	5077.7	38.00	281.10	4274.4	476.3	-2427.8	0.00	0.00	2474.1	
5	7611.0	0.00	0.00	6626.0	632.2	-3222.3	1.50	180.00	3283.7	
6	9499.0	0.00	0.00	8514.0	632.2	-3222.3	0.00	0.00	3283.7	PBHL (PA 423-24)