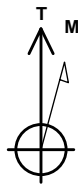


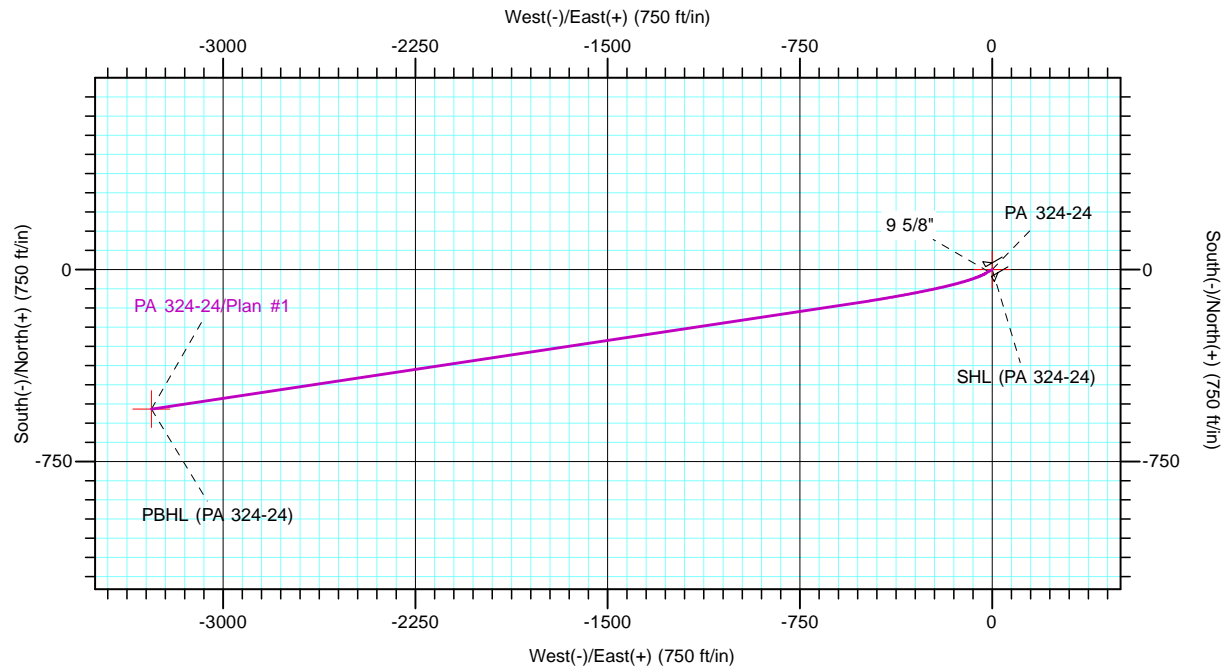
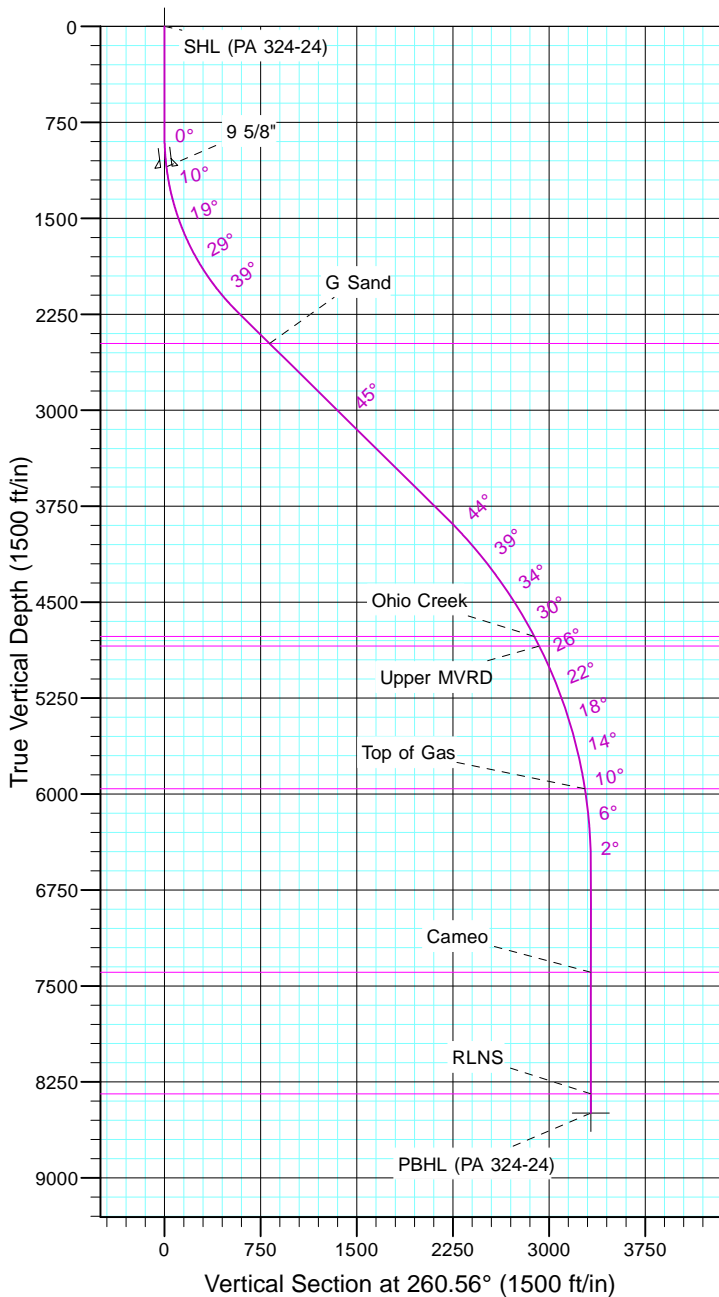
TEP Rocky Mountain LLC

Project: Garfield County, CO NAD83
 Site: RWF 13-19
 Well: PA 324-24
 Wellbore: OH
 Design: Plan #1



Azimuths to True North
 Magnetic North: 9.69°

Magnetic Field
 Strength: 51556.1snT
 Dip Angle: 65.61°
 Date: 5/9/2017
 Model: IGRF2015



CASING DETAILS			
TVD	MD	Name	Size
1099.3	1100.0	9 5/8"	9.625

FORMATION TOP DETAILS		
TVDPath	MDPath	Formation
2479.0	2737.3	G Sand
4769.0	5834.4	Ohio Creek
4844.0	5918.7	Upper MVRD
5959.0	7093.7	Top of Gas
7394.0	8531.1	Cameo
8344.0	9481.1	RLNS

DESIGN TARGET DETAILS							
Name	TVD	+N/-S	+E/-W	Northing	Easting	Latitude	Longitude
SHL (PA 324-24)	0.0	0.0	0.0	1618772.40	2312568.80	39° 30' 25.161 N	107° 56' 11.963 W
PBHL (PA 324-24)	8494.0	-545.6	-3280.2	1618315.00	2309275.10	39° 30' 19.766 N	107° 56' 53.815 W

SECTION DETAILS										
Sec	MD	Inc	Azi	TVD	+N/-S	+E/-W	Dleg	TFace	VSect	Target
1	0.0	0.00	0.00	0.0	0.0	0.0	0.00	0.00	0.0	
2	850.0	0.00	0.00	850.0	0.0	0.0	0.00	0.00	0.0	
3	1183.3	10.00	240.00	1181.6	-14.5	-25.1	3.00	240.00	27.2	
4	2390.3	45.37	261.42	2235.2	-135.0	-558.4	3.00	26.11	573.0	
5	4661.3	45.37	261.42	3830.5	-376.1	-2156.6	0.00	0.00	2189.1	
6	7686.1	0.00	0.00	6549.0	-545.6	-3280.2	1.50	180.00	3325.3	
7	9631.1	0.00	0.00	8494.0	-545.6	-3280.2	0.00	0.00	3325.3	PBHL (PA 324-24)