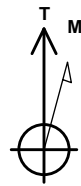


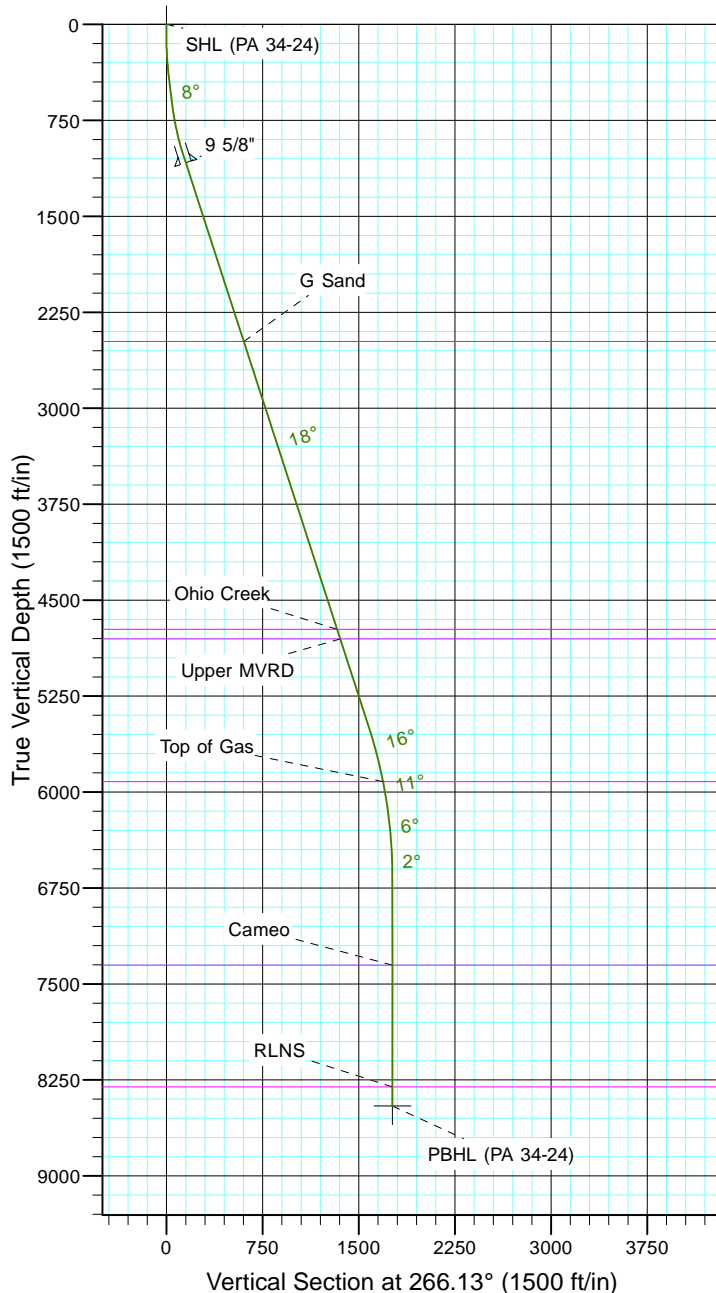
TEP Rocky Mountain LLC

Project: Garfield County, CO NAD83
Site: RWF 13-19
Well: PA 34-24
Wellbore: OH
Design: Plan #1



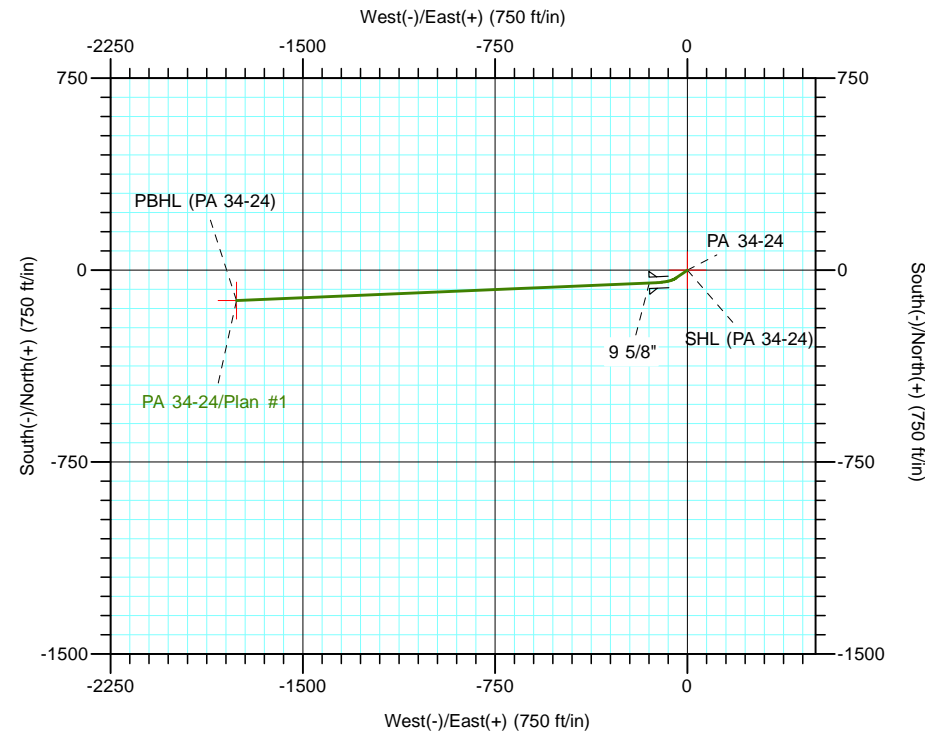
Azimuths to True North
Magnetic North: 9.69°

Magnetic Field
Strength: 51556.1snT
Dip Angle: 65.61°
Date: 5/9/2017
Model: IGRF2015



CASING DETAILS			
TVD	MD	Name	Size
1083.3	1100.0	9 5/8"	9.625

FORMATION TOP DETAILS		
TVDPPath	MDPath	Formation
2479.0	2567.0	G Sand
4729.0	4932.1	Ohio Creek
4804.0	5010.9	Upper MVRD
5919.0	6175.4	Top of Gas
7354.0	7615.2	Cameo
8304.0	8565.2	RLNS



DESIGN TARGET DETAILS							
Name	TVD	+N/-S	+E/-W	Northing	Easting	Latitude	Longitude
SHL (PA 34-24)	0.0	0.0	0.0	1618778.70	2312547.20	39° 30' 25.217 N	107° 56' 12.241 W
PBHL (PA 34-24)	8454.0	-118.8	-1758.0	1618707.10	2310786.60	39° 30' 24.042 N	107° 56' 34.672 W

SECTION DETAILS										
Sec	MD	Inc	Azi	TVD	+N/-S	+E/-W	Dleg	TFace	VSect	Target
1	0.0	0.00	0.00	0.0	0.0	0.0	0.00	0.00	0.0	
2	120.0	0.00	0.00	120.0	0.0	0.0	0.00	0.00	0.0	
3	386.7	8.00	235.00	385.8	-10.7	-15.2	3.00	235.00	15.9	
4	636.7	8.00	235.00	633.4	-30.6	-43.7	0.00	0.00	45.7	
5	1035.8	17.94	267.56	1022.3	-49.2	-128.2	3.00	53.04	131.3	
6	5727.6	17.94	267.56	5485.8	-110.9	-1572.4	0.00	0.00	1576.3	
7	6923.9	0.00	0.00	6662.7	-118.8	-1758.0	1.50	180.00	1762.1	
8	8715.2	0.00	0.00	8454.0	-118.8	-1758.0	0.00	0.00	1762.1	PBHL (PA 34-24)