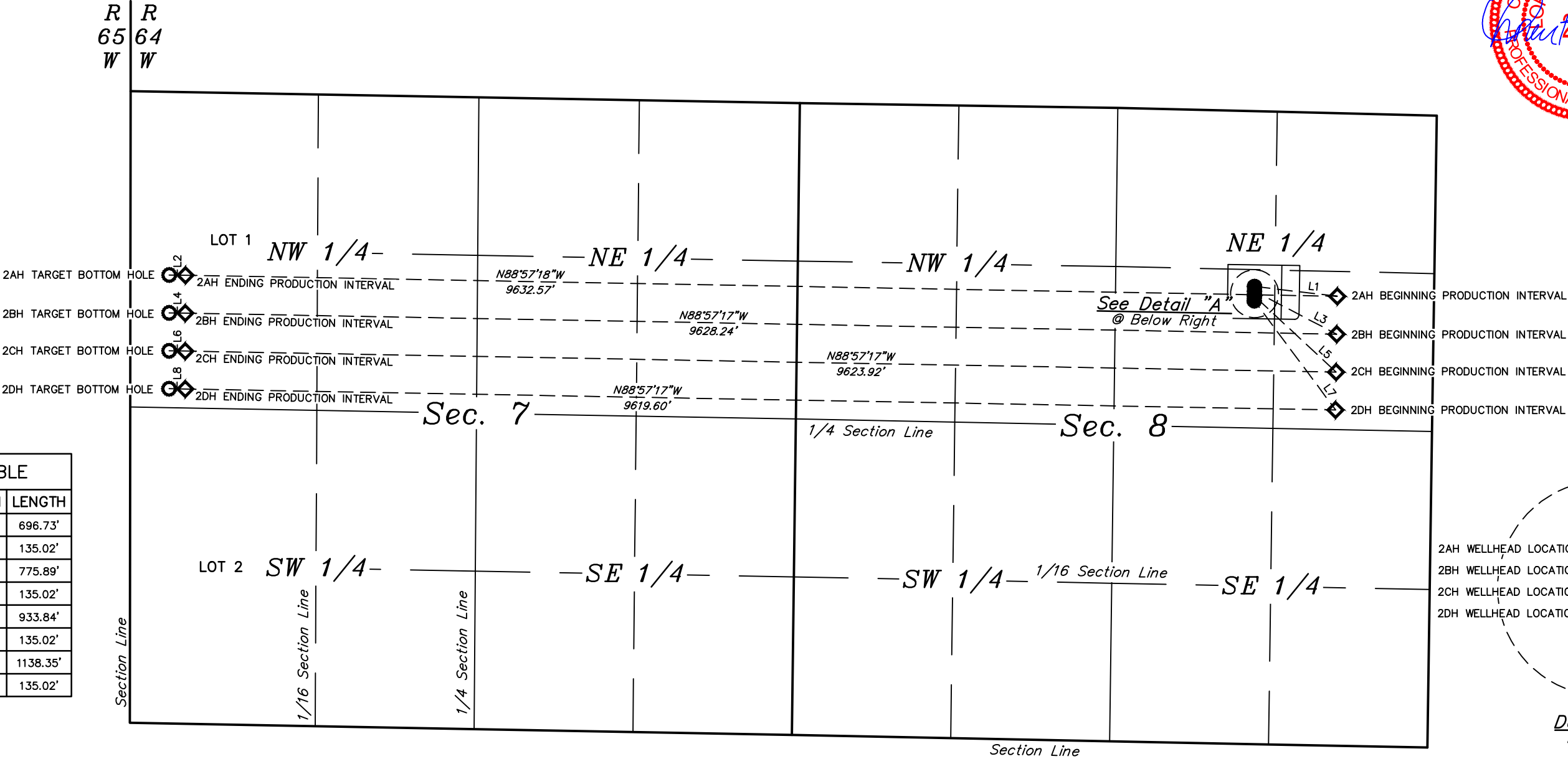




- LEGEND:**
- = WELLHEAD LOCATION.
 - ◇ = PRODUCTION INTERVAL.
 - = TARGET BOTTOM HOLE.



NOTES:

ConocoPhillips Company

**TIBERIUS #4-64 8-7 2AH, 2BH, 2CH & 2DH
SW 1/4 NE 1/4, SECTION 8, T4S, R64W, 6th P.M.
ARAPAHOE COUNTY, COLORADO**



UELS, LLC
Corporate Office * 85 South 200 East
Vernal, UT 84078 * (435) 789-1017

SURVEYED BY	JAMES FRESHWATER, G.W.	07-20-17	SCALE
DRAWN BY	K.B.	07-24-17	1" = 1000'
MULTI-WELL PLAN			FIGURE #4