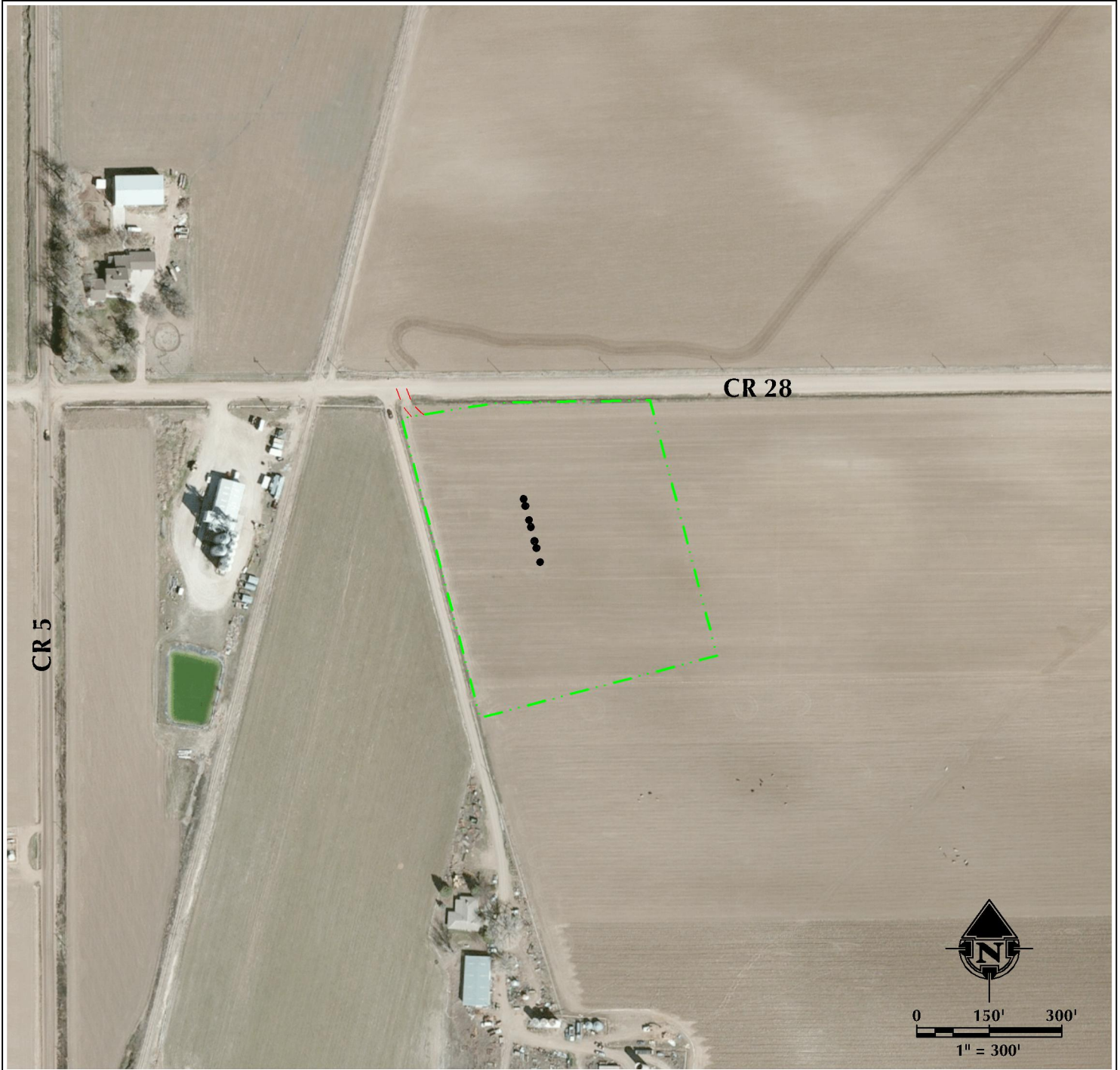


# HERGENREDER 22N2-4HZ ACCESS MAP

N1/2 NW1/4 SECTION 33, TOWNSHIP 3 NORTH, RANGE 68 WEST, 6TH P.M.



## LEGEND

- PROPOSED WELL
- - - ACCESS
- - - - - DISTURBANCE AREA



**609 CONSULTING, LLC**  
 LOVELAND OFFICE  
 1635 Foxtrail Drive, Suite 204  
 Loveland, Colorado 80538  
 Phone 970-776-4331

SHERIDAN OFFICE  
 1099 Saberton Avenue  
 Sheridan, Wyoming 82801  
 Phone 307-674-0609

DATE SURVEYED: 2/21/17  
 DATE: 6/27/17  
 DRAFTER: GLK  
 REVISED:

DATA SOURCES:  
 - AERIAL COURTESY OF ESRI, INC.

PREPARED FOR:  
**Kerr-McGee Oil & Gas Onshore L.P.**