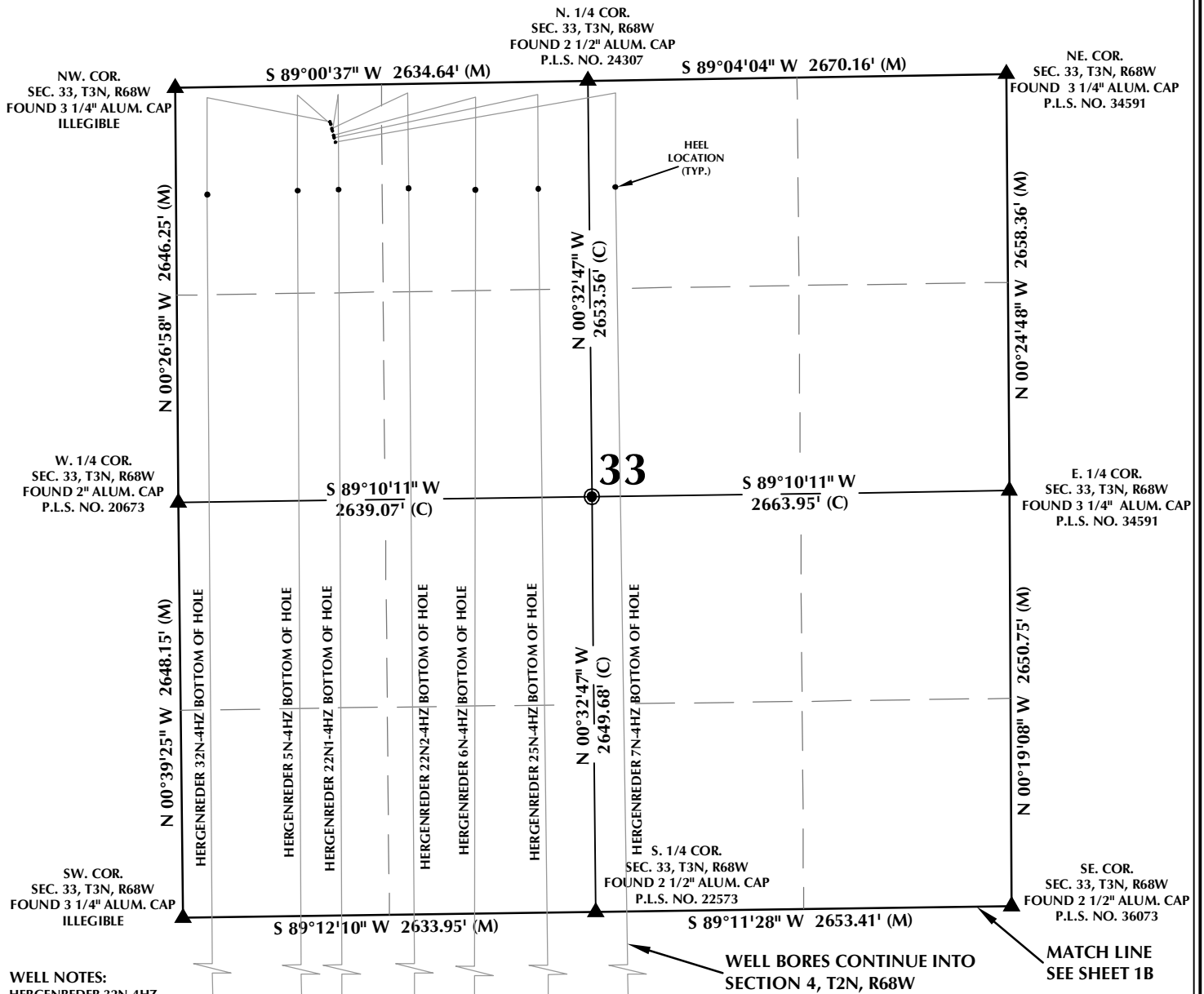


MULTI-WELL PLAN SECTION 33, T3N, R68W



WELL NOTES:

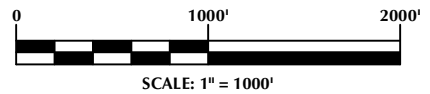
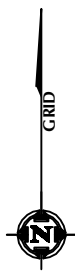
- HERGENREDER 32N-4HZ**
SURFACE: 232' FNL, 987' FWL (SEC. 33, T3N, R68W)
BOTTOM HOLE: 2014' FNL, 226' FWL (SEC. 4, T2N, R68W)
- HERGENREDER 5N-4HZ**
SURFACE: 247' FNL, 991' FWL (SEC. 33, T3N, R68W)
BOTTOM HOLE: 2017' FNL, 789' FWL (SEC. 4, T2N, R68W)
- HERGENREDER 22N2-4HZ**
SURFACE: 276' FNL, 998' FWL (SEC. 33, T3N, R68W)
BOTTOM HOLE: 2024' FNL, 1515' FWL (SEC. 4, T2N, R68W)
- HERGENREDER 22N1-4HZ**
SURFACE: 291' FNL, 1002' FWL (SEC. 33, T3N, R68W)
BOTTOM HOLE: 2021' FNL, 1046' FWL (SEC. 4, T2N, R68W)
- HERGENREDER 6N-4HZ**
SURFACE: 320' FNL, 1009' FWL (SEC. 33, T3N, R68W)
BOTTOM HOLE: 2028' FNL, 1887' FWL (SEC. 4, T2N, R68W)
- HERGENREDER 25N-4HZ**
SURFACE: 334' FNL, 1013' FWL (SEC. 33, T3N, R68W)
BOTTOM HOLE: 2027' FNL, 2376' FWL (SEC. 4, T2N, R68W)
- HERGENREDER 7N-4HZ**
SURFACE: 364' FNL, 1020' FWL (SEC. 33, T3N, R68W)
BOTTOM HOLE: 2027' FNL, 2421' FEL (SEC. 4, T2N, R68W)

WELL BORES CONTINUE INTO SECTION 4, T2N, R68W

MATCH LINE SEE SHEET 1B

NOTES:

1. ▲ INDICATES SECTION CORNER
2. ● INDICATES CALCULATED CORNER
3. BASIS OF BEARING DERIVED FROM COLORADO COORDINATE SYSTEM OF 1983 NORTH ZONE.
4. ALL MEASURED DISTANCES ARE GRID. COMBINED SCALE FACTOR: .99972556 CALCULATED FROM THE W. 1/4 CORNER OF SECTION 4, T2N, R68W
5. WELL FOOTAGES ARE MEASURED AT RIGHT ANGLES TO THE SECTION LINES.



WELL PAD - HERGENREDER 22N2-4HZ

MULTI-WELL PLAN
HERGENREDER 32N-4HZ,
HERGENREDER 5N-4HZ, HERGENREDER 22N2-4HZ, HERGENREDER
22N1-4HZ, HERGENREDER 6N-4HZ, HERGENREDER 25N-4HZ &
HERGENREDER 7N-4HZ
LOCATED IN SECTION 33
T3N, R68W, 6TH P.M. &
LOCATED IN SECTION 4
T2N, R68W, 6TH P.M.
WELD COUNTY, COLORADO

**Kerr-McGee Oil &
Gas Onshore L.P.**
1099 18th Street
Denver, Colorado 80202



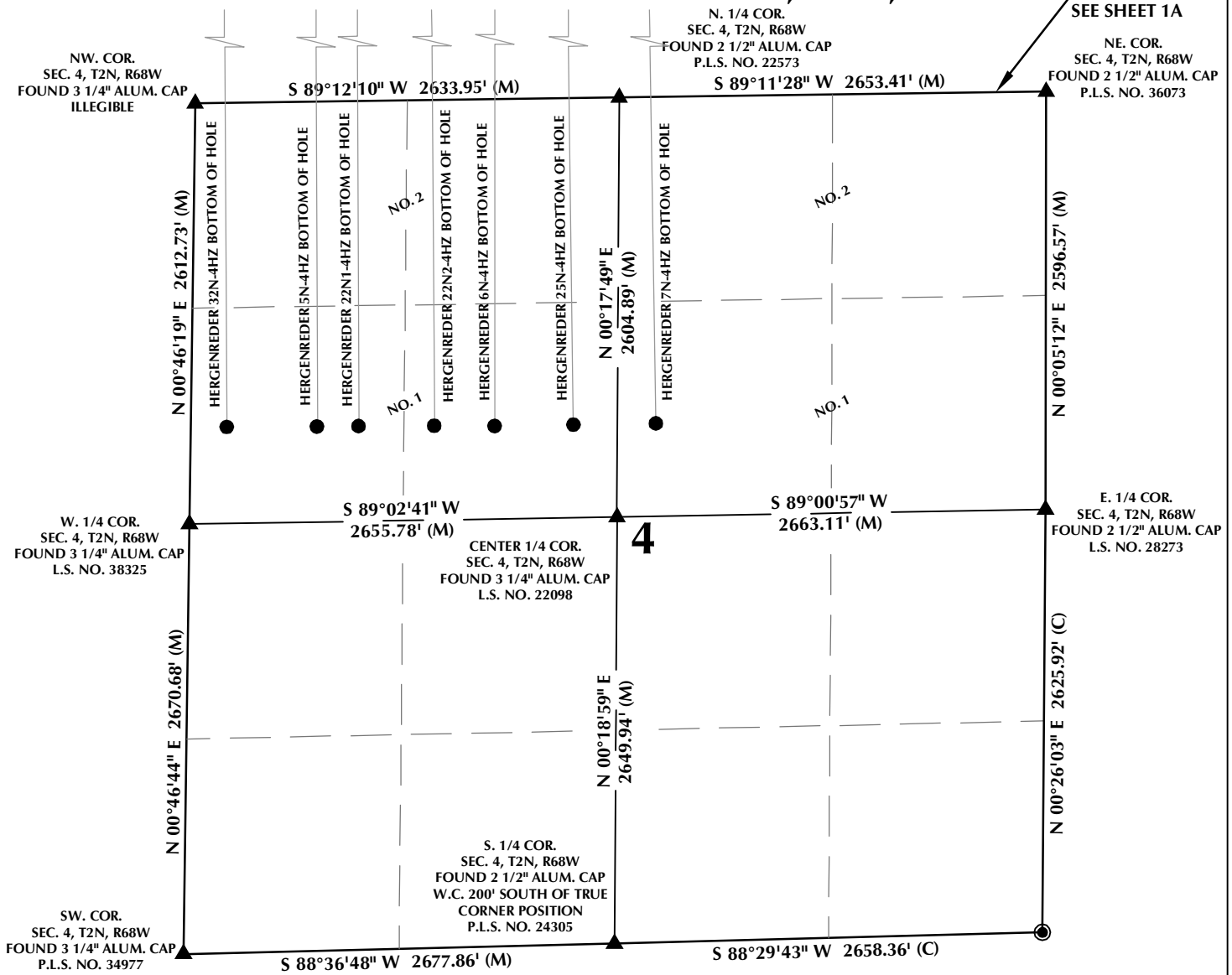
CONSULTING, LLC

SHERIDAN OFFICE
1095 Saberton Avenue
Sheridan, Wyoming 82801
Phone 307-674-0609

LOVELAND OFFICE
1635 Foxtrail Drive, Suite 204
Loveland, Colorado 80538
Phone 970-776-4331

DRAFTED BY: LMO	CHECKED BY: RKF	SHEET NO: 1A 1A OF 1
DATE DRAFTED: 9/25/15	DATE SURVEYED: 2/21/17	
REVISED: 6/27/17	FILE NAME: 15-68	

MULTI-WELL PLAN SECTION 4, T2N, R68W



WELL NOTES:

- HERGENREDER 32N-4HZ**
SURFACE: 232' FNL, 987' FWL (SEC. 33, T3N, R68W)
BOTTOM HOLE: 2014' FNL, 226' FWL (SEC. 4, T2N, R68W)
- HERGENREDER 5N-4HZ**
SURFACE: 247' FNL, 991' FWL (SEC. 33, T3N, R68W)
BOTTOM HOLE: 2017' FNL, 789' FWL (SEC. 4, T2N, R68W)
- HERGENREDER 22N2-4HZ**
SURFACE: 276' FNL, 998' FWL (SEC. 33, T3N, R68W)
BOTTOM HOLE: 2024' FNL, 1515' FWL (SEC. 4, T2N, R68W)
- HERGENREDER 22N1-4HZ**
SURFACE: 291' FNL, 1002' FWL (SEC. 33, T3N, R68W)
BOTTOM HOLE: 2021' FNL, 1046' FWL (SEC. 4, T2N, R68W)
- HERGENREDER 6N-4HZ**
SURFACE: 320' FNL, 1009' FWL (SEC. 33, T3N, R68W)
BOTTOM HOLE: 2028' FNL, 1887' FWL (SEC. 4, T2N, R68W)
- HERGENREDER 25N-4HZ**
SURFACE: 334' FNL, 1013' FWL (SEC. 33, T3N, R68W)
BOTTOM HOLE: 2027' FNL, 2376' FWL (SEC. 4, T2N, R68W)
- HERGENREDER 7N-4HZ**
SURFACE: 364' FNL, 1020' FWL (SEC. 33, T3N, R68W)
BOTTOM HOLE: 2027' FNL, 2421' FEL (SEC. 4, T2N, R68W)

NOTES:

- ▲ INDICATES SECTION CORNER
- INDICATES CALCULATED CORNER
- BASIS OF BEARING DERIVED FROM COLORADO COORDINATE SYSTEM OF 1983 NORTH ZONE.
- ALL MEASURED DISTANCES ARE GRID.
- COMBINED SCALE FACTOR: .99972556 CALCULATED FROM THE W. 1/4 CORNER OF SECTION 4, T2N, R68W
- WELL FOOTAGES ARE MEASURED AT RIGHT ANGLES TO THE SECTION LINES.
- NO. 1 & NO. 2 AS SHOWN HEREON ARE GOVERNMENT LOTS 1 & 2 PER THE ORIGINAL GLO SURVEY

WELL PAD - HERGENREDER 22N2-4HZ

MULTI-WELL PLAN
HERGENREDER 32N-4HZ,
HERGENREDER 5N-4HZ, HERGENREDER 22N2-4HZ, HERGENREDER
22N1-4HZ, HERGENREDER 6N-4HZ, HERGENREDER 25N-4HZ &
HERGENREDER 7N-4HZ
LOCATED IN SECTION 33
T3N, R68W, 6TH P.M. &
LOCATED IN SECTION 4
T2N, R68W, 6TH P.M.
WELD COUNTY, COLORADO

**Kerr-McGee Oil &
Gas Onshore L.P.**
1099 18th Street
Denver, Colorado 80202



CONSULTING, LLC

SHERIDAN OFFICE
1095 Saberton Avenue
Sheridan, Wyoming 82801
Phone 307-674-0609

LOVELAND OFFICE
1635 Foxtrail Drive, Suite 204
Loveland, Colorado 80538
Phone 970-776-4331

DRAFTED BY:	LMO	CHECKED BY:	RKF	SHEET NO: 1B 1B OF 1
DATE DRAFTED:	9/25/15	DATE SURVEYED:	2/21/17	
REVISED:	6/27/17	FILE NAME:	15-68	

K:\MADARKO\2015\2015_66_HERGENREDER_T3N_68W_33\PLATS\HERGENREDER M-W PLAN.dwg, 6/28/2017 10:29:17 AM, lba