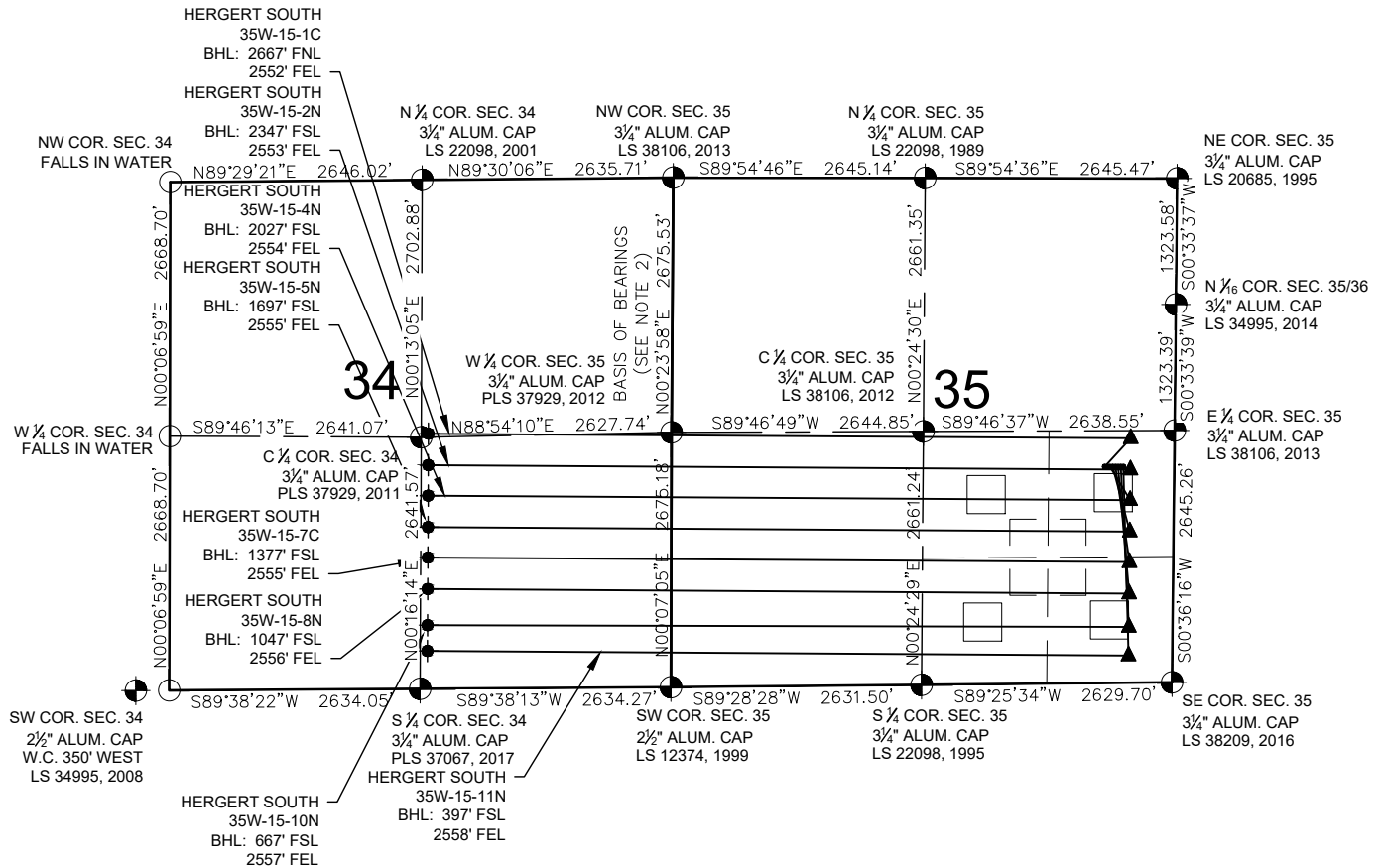


# HERGERT 35-L PAD MULTI-WELL PLAN



## NOTES:

- HERGERT SOUTH 35W-15-1C TO BE AT 2272' FSL & 731' FEL.
- BOTTOM HOLE AT 2667' FNL & 2552' FEL, SEC. 34.
- HERGERT SOUTH 35W-15-2N TO BE AT 2272' FSL & 703' FEL.
- BOTTOM HOLE AT 2347' FSL & 2553' FEL, SEC. 34.
- HERGERT SOUTH 35W-15-4N TO BE AT 2272' FSL & 675' FEL.
- BOTTOM HOLE AT 2027' FSL & 2554' FEL, SEC. 34.
- HERGERT SOUTH 35W-15-5N TO BE AT 2272' FSL & 647' FEL.
- BOTTOM HOLE AT 1697' FSL & 2555' FEL, SEC. 34.
- HERGERT SOUTH 35W-15-7C TO BE AT 2271' FSL & 619' FEL.
- BOTTOM HOLE AT 1377' FSL & 2555' FEL, SEC. 34.
- HERGERT SOUTH 35W-15-8N TO BE AT 2271' FSL & 591' FEL.
- BOTTOM HOLE AT 1047' FSL & 2556' FEL, SEC. 34.
- HERGERT SOUTH 35W-15-10N TO BE AT 2271' FSL & 563' FEL.
- BOTTOM HOLE AT 667' FSL & 2557' FEL, SEC. 34.
- HERGERT SOUTH 35W-15-11N TO BE AT 2271' FSL & 535' FEL.
- BOTTOM HOLE AT 397' FSL & 2558' FEL, SEC. 34.

## LEGEND

- = EXISTING MONUMENT
- = CALCULATED POSITION
- = PROPOSED WELL
- ◆ = EXISTING WELL
- ▲ = LANDING POINT
- BHL = BOTTOM HOLE LOCATION

## NOTES:

- THIS FIELD SURVEY CONFORMS TO THE MINIMUM STANDARDS SET BY THE C.O.G.C.C., RULE NO. 215
- BEARINGS ARE BASED ON THE ASSUMPTION THAT THE WEST LINE OF THE NORTHWEST QUARTER OF SECTION 35, BEARS N00°23'58"E BETWEEN THE MONUMENTS SHOWN HEREON.
- ALL DISTANCES AND BEARINGS SHOWN HEREON ARE GROUND VALUES AS GPS MEASURED IN THE FIELD, WITH TIES TO WELLS MEASURED PERPENDICULAR TO SECTION LINES. THIS LOW DISTORTION PROJECTION (LDP) IS BASED ON THE NORTH AMERICAN DATUM OF 1983, U.S. SURVEY FOOT WITH A LATITUDE ORIGIN OF 40.574349°N, A CENTRAL MERIDIAN LONGITUDE OF 104.926734°W, AND A SCALE FACTOR ON THE CENTRAL MERIDIAN OF 1.000237 (EXACT). THE LDP BASIS OF BEARINGS IS GEODETIC NORTH.
- FIELD VERIFICATION OF MONUMENTS COMPLETED WITHIN 1 YEAR OF SIGNATURE DATE.