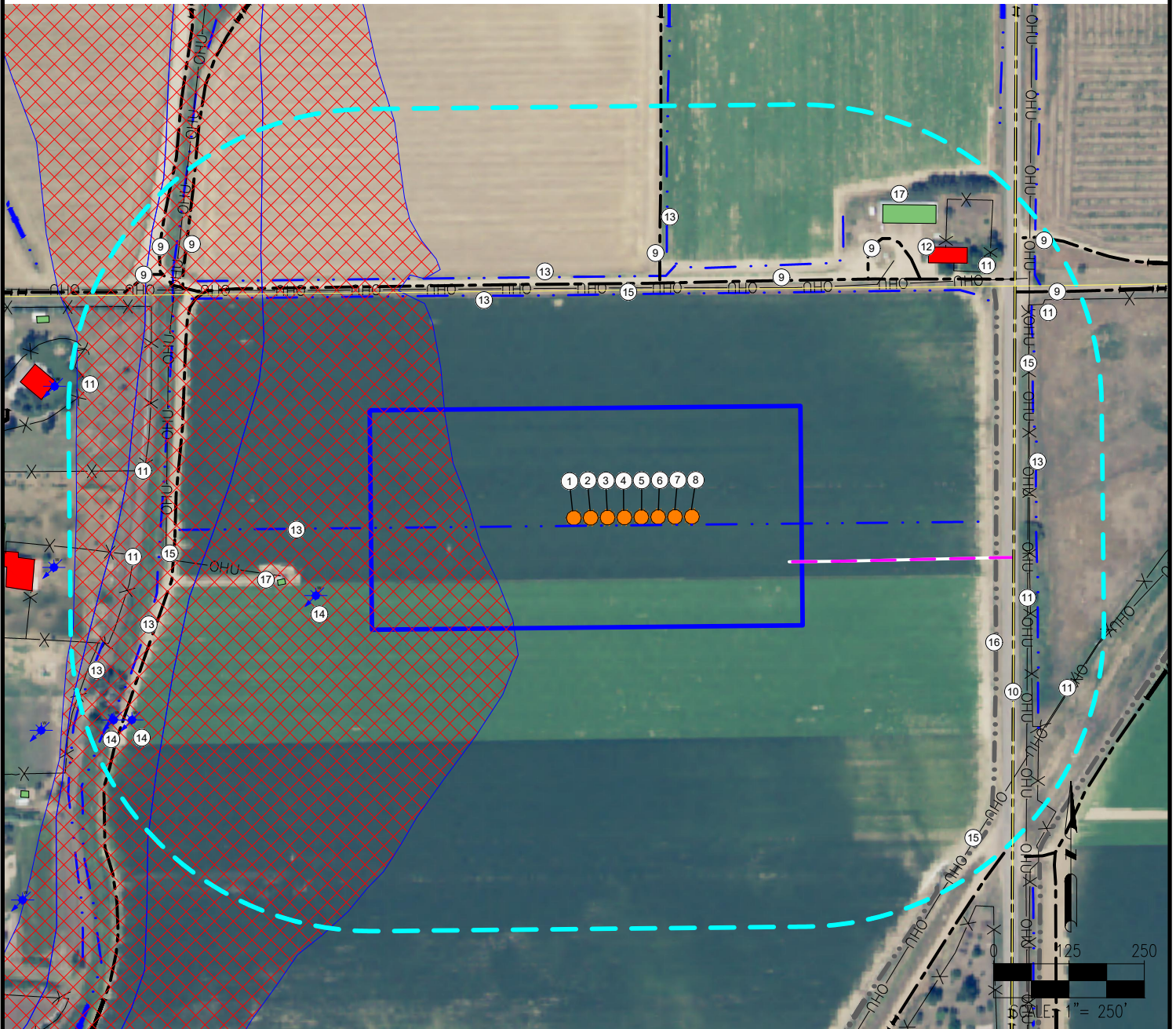


HERGERT 35-L PAD LOCATION DRAWING



1. HERGERT SOUTH 35W-15-1C
2. HERGERT SOUTH 35W-15-2N
3. HERGERT SOUTH 35W-15-4N
4. HERGERT SOUTH 35W-15-5N
5. HERGERT SOUTH 35W-15-7C
6. HERGERT SOUTH 35W-15-8N
7. HERGERT SOUTH 35W-15-10N
8. HERGERT SOUTH 35W-15-11N
9. PRIVATE ROADS ARE $\pm 388'$ N, $\pm 411'$ NE, $\pm 607'$ NE, $\pm 855'$ NE, $\pm 798'$ NE, $\pm 689'$ W, $\pm 777'$ NW, $\pm 817'$ NW
10. COUNTY ROAD 23 IS $\pm 690'$ E
11. FENCES ARE $\pm 761'$ SW, $\pm 745'$ NW, $\pm 728'$ E, $\pm 729'$ NE, $\pm 808'$ NE, $\pm 829'$ SE
12. BUILDING UNIT IS $\pm 702'$ NE
13. DITCHES ARE $\pm 13'$ S, $\pm 370'$ N, $\pm 400'$ N, $\pm 444'$ NE, $\pm 711'$ W, $\pm 739'$ E, $\pm 836'$ SW
14. WATER WELLS ARE $\pm 447'$ SW, $\pm 832'$ SW, $\pm 860'$ SW
15. OVERHEAD UTILITIES ARE $\pm 381'$ N, $\pm 524'$ SW, $\pm 726'$ E, $\pm 824'$ SE
16. CONCRETE DITCH IS $\pm 673'$ E
17. BUILDINGS ARE $\pm 518'$ SW, $\pm 689'$ NE

LEGEND:

- = PROPOSED WELL
- ✕ = WATER WELL
- = PROPOSED ACCESS ROAD
- = EXISTING ROAD
- = DITCH
- = CONCRETE DITCH
- ✕✕✕ = FENCE
- OHU = OVERHEAD UTILITY
- = DISTURBANCE AREA
- = 500' RADIUS
- = BUILDING UNIT
- = BUILDING
- = FLOODPLAIN

MEASURED FROM NEAREST WELL:

- BUILDING $\pm 491'$ SW
- BUILDING UNIT $\pm 576'$ NE
- PUBLIC ROAD (COUNTY ROAD 23) $\pm 523'$ E
- PROP. LINE (Hergert Limited Partnership No. 3) $\pm 377'$ N
- UTILITY (POWERLINE) $\pm 380'$ N
- RAILROAD $\pm 5280'$ SW

MEASURED FROM NEAREST EDGE OF DISTURBANCE:

- SURFACE WATER (DITCH) $\pm 0'$

REFERENCE LOCATION

****HERGERT SOUTH 35W-15-2N****

LAT: 40.529588° N
LONG: 104.853601° W
ELEVATION: 4883'
2272' FSL & 703' FEL
PDOP: 1.4
GPS OPERATOR: ROSS TODD

MEASURED FROM NEAREST WELL:

- WATER WELL $\pm 447'$ SW
- PERMIT: 12843-F
- SWL = 6'
- RECEIPT: 9061330

DISTURBANCE ACREAGE:

5.97 ACRES DRILLING OPERATIONS
1.08 ACRES INTERIM RECLAIM

CURRENT SURFACE USE: IRRIGATED CROP
FUTURE SURFACE USE: IRRIGATED CROP

PREPARED FOR:



DISCLAIMER:
THIS PLOT DOES NOT REPRESENT A MONUMENTED LAND SURVEY AND SHOULD NOT BE RELIED UPON TO DETERMINE BOUNDARY LINES, PROPERTY OWNERSHIP OR OTHER PROPERTY INTERESTS. PARCEL LINES, IF DEPICTED HAVE NOT BEEN FIELD VERIFIED AND MAY BE BASED UPON PUBLICLY AVAILABLE DATA THAT ALSO HAS NOT BEEN INDEPENDENTLY VERIFIED.

DATA SOURCE:
AERIAL IMAGERY: NAIP 2015
WATER WELLS: COLORADO DWR
NHD: USGS

PUBLICLY AVAILABLE DATA SOURCES HAVE NOT BEEN INDEPENDENTLY VERIFIED BY ASCENT.



7535 Hilltop Circle
Denver, CO 80221
(303) 928-7128
www.ascentgeomatics.com

FIELD DATE:

06-29-17

DRAWING DATE:

08-15-17

BY:

CSG

CHECKED:

DJP

SITE NAME:

HERGERT 35-L PAD

SURFACE LOCATION:

NE 1/4 SE 1/4 SEC. 35, T7N, R67W, 6TH P.M.

WELD COUNTY, COLORADO