



Corporate Office
1775 Sherman Street, #3000
Denver, Colorado 80203
303.860.5800
www.pdce.com

September 18, 2017

Department of Natural Resources
Oil and Gas Conservation Commission
The Chancery Building
Attn: Matt Lepore
1120 Lincoln St., Suite 801
Denver, CO 80203

Re: **30 Day Certification Letter – Rule 318Ae**
High Plains 25N-241
NWNW Section 25, T5N-R65W, 6th PM
Weld County, Colorado

Dear Director,

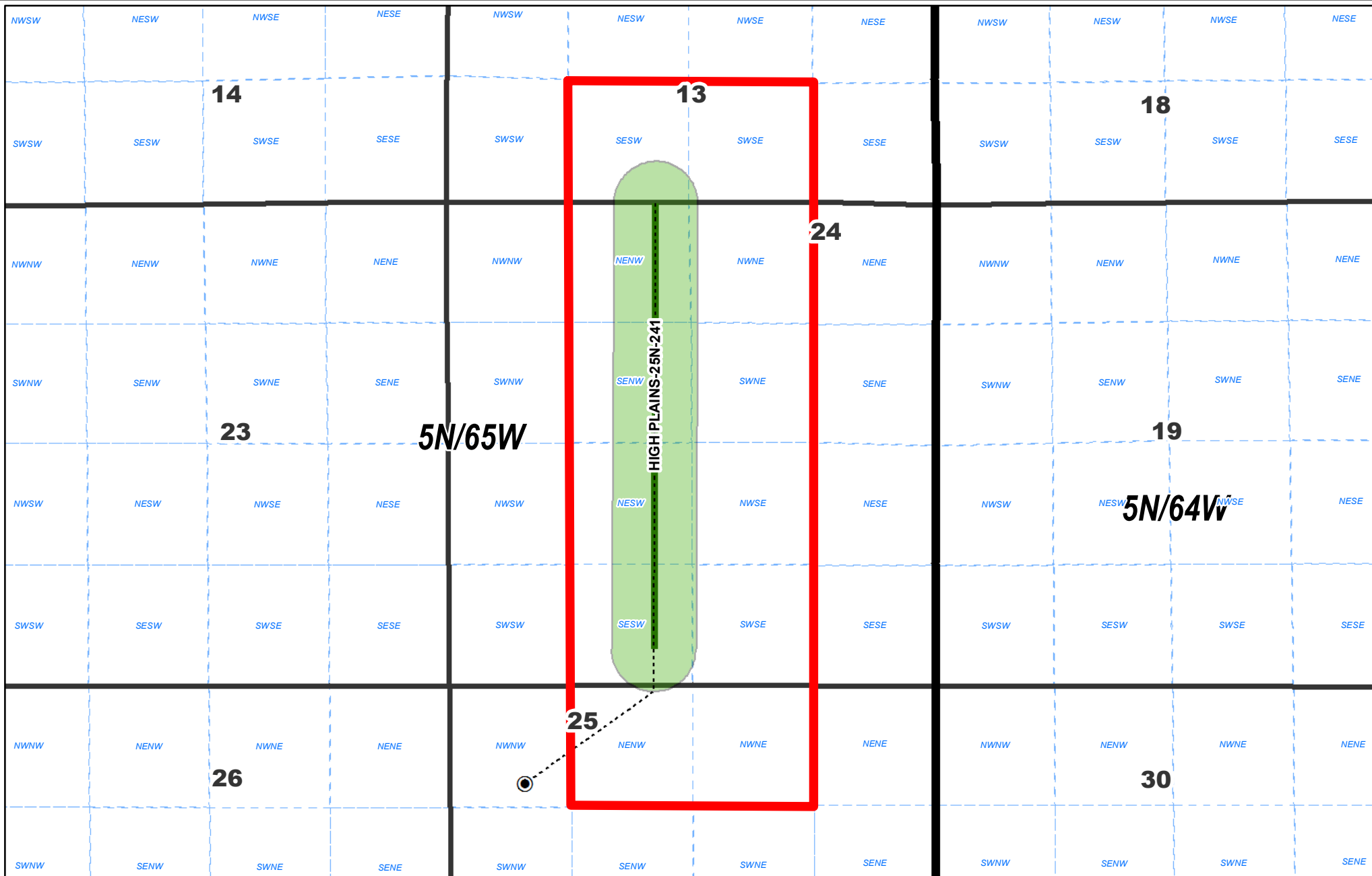
PDC Energy, Inc. ("PDC") hereby certifies to the Director that a thirty (30-day) notice has been given by certified mail to all owners in the proposed wellbore spacing unit consisting of T5N-R65W Section 13: SESW, SWSE, Section 24: E2W2, W2E2, Section 25: NENW, NWNE, 480 acres. We have not received any objections to such well location or proposed spacing unit, therefore, PDC hereby requests the Director to approve the well.

If you should have any questions or concerns regarding this permit, please contact the undersigned at (303) 831-3931 or alexandria.gale@pdce.com.

Sincerely,

A handwritten signature in blue ink that reads "Ally Gale".

Ally Gale
Regulatory Technician
PDC Energy, Inc.



**DJ Preliminary Proposed Spacing Unit
HIGH PLAINS 25N-241**

Date: 2/21/2017

Legend



Townships

Sections

Qtr Qtr (Weld Cty)



Preliminary Proposed Spacing Unit

460' Foot Wellbore Buffer

Spaced Wellbore

Disclaimer:
PDC Energy, Inc. makes no representation or warranty regarding the accuracy or completeness of this map, which is being provided as a courtesy only. PDC Energy, Inc. expressly disclaims all liability and responsibility for any representation, warranty, statement or depiction in this map, whether express, statutory or implied, as to the content, character or nature of any information contained in this map, including, but not limited to, the leasehold acreage positions, well locations and statuses or any other information depicted. Any conclusions derived from this map are at the sole cost, risk and expense of the user.
© 2014 PDC Energy, Inc. All Rights Reserved.

