

HALLIBURTON

iCem[®] Service

FIFTH CREEK ENERGY

Date: Friday, July 21, 2017

Critter Creek 278-1527H Production

Job Date: Sunday, July 16, 2017

Sincerely,

Julia Nichols

Legal Notice

Disclaimer:

All information in this report is provided subject to the terms and conditions which govern the services provided by Halliburton. Halliburton personnel use their best efforts in gathering information and their best judgment in interpreting it, but any interpretation, research, analysis or recommendation furnished by Halliburton are opinions based upon inferences from measurements and empirical relationships and assumptions, which inferences and empirical relationships and assumptions are not infallible, and with respect to which professionals in the industry may differ. Accordingly, HALLIBURTON IS UNABLE TO GUARANTEE THE ACCURACY OF ANY CHART INTERPRETATION, RESEARCH ANALYSIS, OR JOB RECOMMENDATION and any interpretation or recommendation is not for use of or reliance upon by any third party. The customer has full responsibility for any of its decisions which are based on the information provided in this report.

Table of Contents

1.0 Cementing Job Summary 4

 1.1 Executive Summary4

2.0 Real-Time Job Summary 7

 2.1 Job Event Log7

3.0 Attachments..... 8

 3.1 Custom Results – Job Chart with Events8

 3.2 Custom Results – Job Chart without Events.....9

1.0 Cementing Job Summary

1.1 Executive Summary

Halliburton appreciates the opportunity to perform the cementing services on the **Critter Creek 278-1527H** cement **Production** casing job. A pre-job safety meeting was held before the job where details of the job were discussed, potential safety hazards were reviewed, and environmental compliance procedures were outlined.

Approximately 50 barrels of cement were returned to surface.

Halliburton maintains a continuous quality improvement process and appreciates any comments or suggestions that you may have. Halliburton again thanks you for the opportunity to perform service work on this well. We hope to be your solutions provider for future projects.

Respectfully,

Halliburton [Ft. Lupton]

HALLIBURTON

Cementing Job Summary

The Road to Excellence Starts with Safety

Sold To #: 375970	Ship To #: 3798153	Quote #:	Sales Order #: 0904147708							
Customer: FIFTH CREEK ENERGY OPERATING		Customer Rep: Craig Jones								
Well Name: CRITTER CREEK	Well #: 278-1527H	API/UWI #: 05-123-44711-00								
Field: HEREFORD	City (SAP): HEREFORD	County/Parish: WELD	State: COLORADO							
Legal Description: SW SE-15-11N-83W-279FSL-1890FEL										
Contractor: CADE DRLG		Rig/Platform Name/Num: CADE 23								
Job BOM: 7523 7523										
Well Type: HORIZONTAL OIL										
Sales Person: HALAMERICA\HX38199		Srvc Supervisor: Vaughn Oteri								
Job										
Formation Name										
Formation Depth (MD)	Top	Bottom								
Form Type		BHST								
Job depth MD	17844ft	Job Depth TVD								
Water Depth		Wk Ht Above Floor								
Perforation Depth (MD)	From	To								
Well Data										
Description	New / Used	Size in	ID in	Weight lbm/ft	Thread	Grade	Top MD ft	Bottom MD ft	Top TVD ft	Bottom TVD ft
Casing		9.625	8.921	36		J-55	0	1525	0	1525
Casing		5.5	4.892	17		HCP110	0	17837	0	7366
Open Hole Section			8.5				1525	17844	1525	7366
Tools and Accessories										
Type	Size in	Qty	Make	Depth ft		Type	Size in	Qty	Make	
Guide Shoe	5.5					Top Plug	5.5	1	Weatherford	
Float Shoe	5.5			17837		Bottom Plug	5.5			
Float Collar	5.5			17787		SSR plug set	5.5			
Insert Float	5.5					Plug Container	5.5	1	HES	
Stage Tool	5.5					Centralizers	5.5			
Fluid Data										
Stage/Plug #: 1										
Fluid #	Stage Type	Fluid Name	Qty	Qty UoM	Mixing Density lbm/gal	Yield ft3/sack	Mix Fluid Gal	Rate bbl/min	Total Mix Fluid Gal	
1	11.5 lb/gal Tuned Spacer III	Tuned Spacer III	40	bbl	11.5	3.78		5		
Fluid #	Stage Type	Fluid Name	Qty	Qty UoM	Mixing Density lbm/gal	Yield ft3/sack	Mix Fluid Gal	Rate bbl/min	Total Mix Fluid Gal	
2	13.2# ElastiCem	ELASTICEM (TM) SYSTEM	1145	sack	13.2	1.57		8	7.54	

last updated on 7/21/2017 1:25:32 PM

Page 1 of 2

iCem® Service

(v. 4.4.18)

Created: Friday, July 21, 2017

HALLIBURTON

Cementing Job Summary

Fluid #	Stage Type	Fluid Name	Qty	Qty UoM	Mixing Density lbm/gal	Yield ft3/sack	Mix Fluid Gal	Rate bbl/mi n	Total Mix Fluid Gal
3	NeoCem	NeoCem TM	1450	sack	13.2	2.04		8	9.75
Fluid #	Stage Type	Fluid Name	Qty	Qty UoM	Mixing Density lbm/gal	Yield ft3/sack	Mix Fluid Gal	Rate bbl/mi n	Total Mix Fluid Gal
4	MMCR Displacement	MMCR Displacement	20	bbl	8.48				
Fluid #	Stage Type	Fluid Name	Qty	Qty UoM	Mixing Density lbm/gal	Yield ft3/sack	Mix Fluid Gal	Rate bbl/mi n	Total Mix Fluid Gal
5	Displacement		392	bbl	8.34				
Cement Left In Pipe		Amount	87 ft		Reason			Shoe Joint	
Comment 50bbl of cement back to surface									

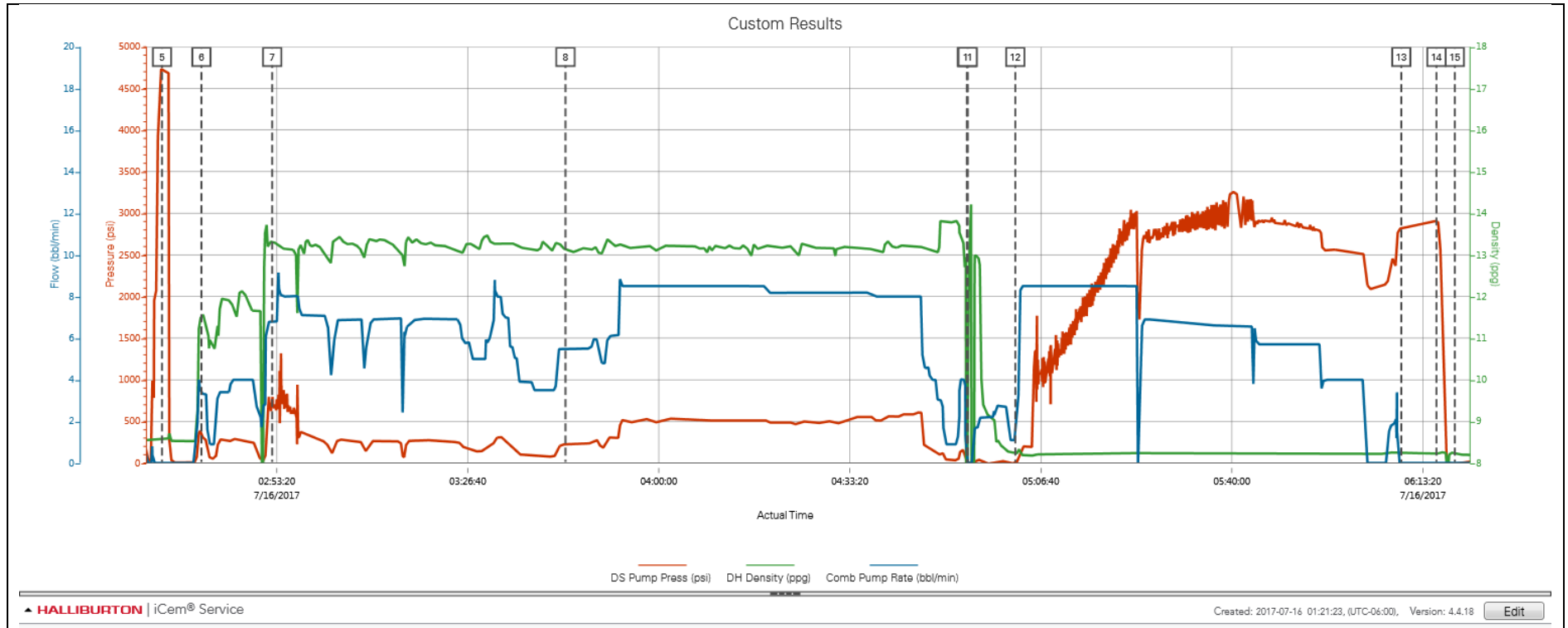
2.0 Real-Time Job Summary

2.1 Job Event Log

Type	Seq. No.	Activity	Graph Label	Date	Time	Source	DS Pump Press (psi)	DH Density (ppg)	Comb Pump Rate (bbl/min)	Comments
Event	1	Call Out	Call Out	7/15/2017	18:00:00	USER				Call out from ARC hub
Event	2	Arrive At Loc	Arrive At Loc	7/15/2017	23:00:00	USER				Requested on location @0000 Arrived on location @2300 met with company rep to discuss job process and concerns
Event	3	Other	Other	7/15/2017	23:10:10	USER				TD-17844 TP-17837 FC-17787 Surf-1525 TVD-7367 KOP-6767 Casing 5.5 17#
Event	4	Start Job	Start Job	7/16/2017	02:24:33	COM4	-4.00	7.12	0.00	Held pre-job safety meeting with all hands on location to discuss job process and hazards
Event	5	Test Lines	Test Lines	7/16/2017	02:33:18	COM4	4728.00	8.60	0.00	Pressure tested pumps and lines with fresh water 4819psi
Event	6	Pump Spacer 1	Pump Spacer 1	7/16/2017	02:40:11	COM4	337.00	11.54	3.40	Mixed 40bbl of 11.5ppg Tuned spacer III at 4.0bpm 259psi
Event	7	Pump Lead Cement	Pump Lead Cement	7/16/2017	02:52:32	COM4	669.00	13.34	6.80	Mixed 1145sks or 320bbl of 13.2ppg Y-1.57 G/sk 7.54 ElastiCem at 8.0bpm 670psi
Event	8	Pump Tail Cement	Pump Tail Cement	7/16/2017	03:43:42	COM4	223.00	13.12	5.50	Mixed 1450sks or 526bbl of 13.2ppg y-2.08 G/sk-975 NeoCem at 8.0bpm 260psi
Event	9	Shutdown	Shutdown	7/16/2017	04:53:44	COM4	26.00	5.36	0.00	
Event	10	Clean Lines	Clean Lines	7/16/2017	04:53:49	COM4	13.00	7.06	0.00	Washed pumps and lines with fresh water
Event	11	Drop Top Plug	Drop Top Plug	7/16/2017	04:53:54	COM4	5.00	9.47	0.00	Weatherford tool hand released plug witnessed by company rep
Event	12	Pump Displacement	Pump Displacement	7/16/2017	05:02:12	COM4	-2.00	8.24	1.10	Pump 412bbl of fresh water to displace cement
Event	13	Bump Plug	Bump Plug	7/16/2017	06:09:33	COM4	2829.00	8.24	0.00	Bump plug 500psi over final pump pressure
Event	14	Other	Other	7/16/2017	06:15:41	COM4	2909.00	8.22	0.00	Released pressure back to pump truck to check floats, floats held good 3.0bbl back
Event	15	End Job	End Job	7/16/2017	06:18:54	COM4	-10.00	8.23	0.00	50bbl of cement back to surface

3.0 Attachments

3.1 Custom Results – Job Chart with Events



3.2 Custom Results – Job Chart without Events

