

1120 Lincoln Street, Suite 801, Denver, Colorado 80203 Phone: (303)894-2100 Fax: (303)894-2109

DRILLING COMPLETION REPORT

This form is to be submitted within 30 days of the setting of production casing, the plugging of a dry hole, the deepening or sidetracking of a well, or any time the wellbore configuration is changed. If the well is deepened or sidetracked a new Form 5 is required. If an attempt has been made to complete/produce a well, then the operator shall submit Form 5A (Completed Interval Report.) If the well has been plugged, a form 6 (Well Abandonment Report) is required.

1. OGCC Operator Number: 100185		4. Contact Name Sheilla Reed-High		Complete the Attachment Checklist
2. Name of Operator: EnCana Oil & Gas (USA) Inc.		Phone: 720-876-3678		
3. Address: 370 17th Street, Suite 1700 City Denver State: Colo. Zip: 80202		Fax: 720-876-4678		
5. API Number 05- 013-06578-00		6. County: BOULDER		OP OGCC
7. Well Name: LABER		Well Number: 44-34		Logs <input checked="" type="checkbox"/>
8. Location (QtrQtr, Sec, Twp, Rng, Meridian): SESE SEC. 24-T2N-R69W		24		Directional Survey** <input type="checkbox"/>
Footage at surface: 510' FSL 510' FEL/FWL FEL		As Drilled Latitude: 40.118063 As Drilled Longitude: -105.05724		DST Analysis <input type="checkbox"/>
Date of Measurement: 02/26/10 PDOP Reading: 2.2 GPS Instrument Operator's Name: Rob Thomas				Core Analysis <input type="checkbox"/>
** If directional, footage at Top of Prod. Zone				Cmt summary* <input type="checkbox"/>
** If directional, footage at Bottom Hole				
9. Field Name: Wattenberg		10. Field Number 90750		15. Well Classification
11. Federal, Indian or State Lease Number:				<input type="checkbox"/> Dry <input type="checkbox"/> Oil <input checked="" type="checkbox"/> Gas
12. Spud Date: (when the 1st bit hit the dirt) 02-09-10		13. Date TD: 02-12-10		<input type="checkbox"/> Coalbed <input type="checkbox"/> Disposal
		14. Date Casing Set or D&A: 02-13-10		<input type="checkbox"/> Stratigraphic
16. Total Depth MD 8155' TVD**		17. Plug Back Total Depth MD 8071' TVD**		<input type="checkbox"/> Enhanced Recovery
18. Elevations GR 5000' KB 5013'		One paper copy of all electric and mud logs must be submitted, along with one digital LAS copy as available.		<input type="checkbox"/> Gas Storage
19. List Electric Logs Run: CBL				<input type="checkbox"/> Observation
				<input type="checkbox"/> Other:

20.

CASING, LINER and CEMENT

*If Cement Bond Log was not run, submit contractor's cement job summary for each string cemented

String	Hole Size	Csg/Liner Size	Csg/Liner Top	Csg/Tool Setting Depth	Number of sacks cmt	Cement Top	Cement Bottom	CBL*	Calculated*
Conductor									
Surface	12.25"	8.625"	surface	684'	265	0	684'		X
Production	7.875"	4.5"	surface	8145'	580	3110'	8145'	X	
Stage, Squeeze, Remedial Cement Job									
Stage, Squeeze, Remedial Cement Job									
Stage, Squeeze, Remedial Cement Job									
Liner									
Liner									

21.

FORMATION LOG INTERVALS AND TEST ZONES

FORMATION NAME	Measured Depth		Check if applies	
	Top	Bottom	DST	Cored
Shannon	4762'			
Niobrara	7246'			
Codell	7536'			
J Sand	7972'			

COMMENTS

I hereby certify that the statements made in this form are, to the best of my knowledge, true, correct and complete.

Print Name: Sheilla Reed-High

E-mail: sheilla.reedhigh@EnCana.com

Signature:

Sheilla Reed-High

Title:

Operations Technologist

Date:

3-10-10

HALLIBURTON



**ENCANA OIL & GAS (USA) INC. - EBUS
DO NOT MAIL-3601 N STAGECOACH RD
LONGMONT, Colorado**

Laber 44-24

Ensign #122

Post Job Summary Cement Surface Casing

Prepared for: Kevin Brakovec
Date Prepared: 2/11/10
Version: 1

Service Supervisor: Jason Gibbs

Submitted by: Wes Aaron

HALLIBURTON

HALLIBURTON

Service Supervisor Reports

Job Log

Date/Time	Chart #	Activity Code	Pump Rate	Cum Vol	Pump		Pressure (psig)		Comments
02/10/2010 05:00		Arrive at Location from Service Center							
02/10/2010 05:15		Assessment Of Location Safety Meeting							
02/10/2010 07:00		Safety Meeting							
02/10/2010 07:21		Start Job							
02/10/2010 07:21		Test Lines							Test Lines 1500 psi
02/10/2010 07:24		Pump Spacer 1	5				85.0		H2O supplied by the rig.
02/10/2010 07:32		Pump Cement	5				97.0		265 sks @ 14.2 #/gal mixed with H2O supplied by rig.
02/10/2010 07:48		Shutdown							
02/10/2010 07:48		Drop Top Plug							
02/10/2010 07:54		Pump Displacement	5				235.0		H2O supplied by the rig.
02/10/2010 08:05		Shut In Well					185.0		
02/10/2010 08:11		End Job							

HALLIBURTON

Cementing Job Summary

The Road to Excellence Starts with Safety

Sold To #: 340078		Ship To #: 2768077		Quote #:		Sales Order #: 7176817	
Customer: ENCANA OIL & GAS (USA) INC. - EBUS				Customer Rep: PILCHER, ED			
Well Name: Laber			Well #: 44-24		API/UWI #: 05-013-06578-00		
Field: WATTENBERG		City (SAP): FREDERICK		County/Parish: Weld		State: Colorado	
Contractor: Ensign			Rig/Platform Name/Num: #122				
Job Purpose: Cement Surface Casing							
Well Type: Development Well				Job Type: Cement Surface Casing			
Sales Person: FLING, MATTHEW				Srvc Supervisor: GIBBS, JASON		MBU ID Emp #: 300487	

Job Personnel

HES Emp Name	Exp Hrs	Emp #	HES Emp Name	Exp Hrs	Emp #	HES Emp Name	Exp Hrs	Emp #
GIBBS, JASON Edwin		300487	HUFF, DAVID Randall		468612	WILEY, JAMES A		440080

Equipment

HES Unit #	Distance-1 way	HES Unit #	Distance-1 way	HES Unit #	Distance-1 way	HES Unit #	Distance-1 way
10829457	15 mile	10977079	15 mile				

Job Hours

Date	On Location Hours	Operating Hours	Date	On Location Hours	Operating Hours	Date	On Location Hours	Operating Hours

TOTAL Total is the sum of each column separately

Job

Formation Name	Formation Depth (MD)	Top	Bottom	Form Type	Job depth MD	Job Depth TVD	Water Depth	Perforation Depth (MD)	From	To
				BHST	684. ft	684. ft				
						4. ft				

Job Times

Date	Time	Time Zone
10 - Feb - 2010	03:00	MST
10 - Feb - 2010	05:00	MST
10 - Feb - 2010	07:21	MST
10 - Feb - 2010	08:11	MST
10 - Feb - 2010	09:15	MST

Well Data

Description	New / Used	Max pressure psig	Size in	ID in	Weight lbm/ft	Thread	Grade	Top MD ft	Bottom MD ft	Top TVD ft	Bottom TVD ft
Open Hole				12.25					696.		
Surface Casing	Unknown		8.625	8.097	24.	8 RD	J-55		684.		

Tools and Accessories

Type	Size	Qty	Make	Depth	Type	Size	Qty	Make	Depth	Type	Size	Qty	Make
Guide Shoe					Packer					Top Plug			
Float Shoe					Bridge Plug					Bottom Plug			
Float Collar					Retainer					SSR plug set			
Insert Float										Plug Container			
Stage Tool										Centralizers			

Miscellaneous Materials

Gelling Agt	Conc	Surfactant	Conc	Acid Type	Qty	Conc	%
Treatment Fld	Conc	Inhibitor	Conc	Sand Type	Size	Qty	

HALLIBURTON

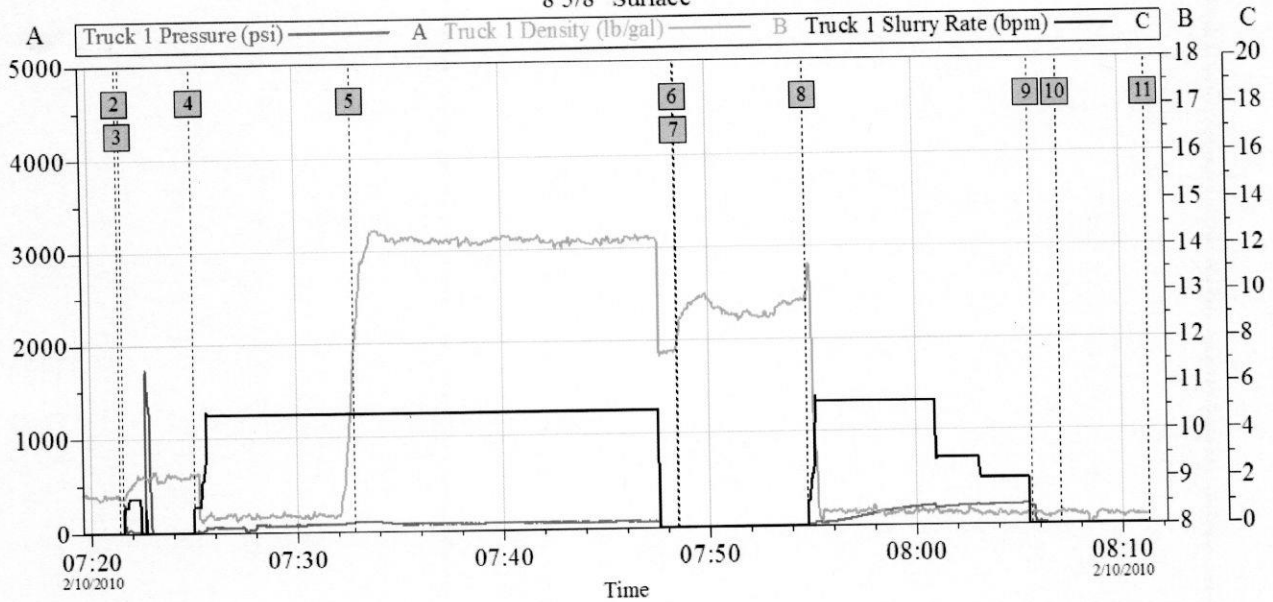
Cementing Job Summary

Fluid Data									
Stage/Plug #: 1									
Fluid #	Stage Type	Fluid Name	Qty	Qty uom	Mixing Density lbm/gal	Yield ft ³ /sk	Mix Fluid Gal/sk	Rate bbl/min	Total Mix Fluid Gal/sk
1	Water Spacer		20.00	bbl	8.33	.0	.0	5.0	
2	Lead Cement	SWIFTCEM (TM) SYSTEM (452990)	265.0	sacks	14.2	1.51	7.53	5.0	7.53
	2 %	CAL-SEAL 60, 50 LB BAG (101217146)							
	2 %	ECONOLITE (100001580)							
	0.2 %	VERSASET, 55 LB SK (101376573)							
	7.53 Gal	FRESH WATER							
3	Water Displacement		41.00	bbl	8.33	.0	.0	5.0	
Calculated Values		Pressures		Volumes					
Displacement		Shut In: Instant		Lost Returns		Cement Slurry		Pad	
Top Of Cement		5 Min		Cement Returns		Actual Displacement		Treatment	
Frac Gradient		15 Min		Spacers		Load and Breakdown		Total Job	
Rates									
Circulating		Mixing		Displacement		Avg. Job			
Cement Left In Pipe	Amount	42 ft	Reason	Shoe Joint					
Frac Ring # 1 @	ID		Frac ring # 2 @	ID		Frac Ring # 3 @	ID	Frac Ring # 4 @	ID
The Information Stated Herein Is Correct				Customer Representative Signature					

HALLIBURTON

Encana Laber 44-24

8 5/8" Surface



Global Event Log					
Intersection	TIP	Intersection	TIP	Intersection	TIP
2 Start Job	07:21:24 1.814	3 Test Lines	07:21:31 1.000	4 Pump Spacer 1	07:24:59 5.096
5 Pump Cement	07:32:47 97.50	6 Shutdown	07:48:27 -6.000	7 Drop Top Plug	07:48:30 -5.592
8 Pump Displacement	07:54:45 5.754	9 Shut In Well	08:05:36 185.0	10 End Job	08:07:01 -3.000
11 Ending Job	08:11:18 -11.00				

Customer: Encana	Job Date: 10-Feb-2010	Sales Order #: n/a	HALLIBURTON
Well Description: 8 5/8"	UWI: 05-013-06578-00		OptiCem v6.4.2 10-Feb-10 08:14

HALLIBURTON

**ENCANA OIL & GAS (USA) INC. - EBUS
DO NOT MAIL-3601 N STAGECOACH RD
LONGMONT, Colorado**

Laber 44-24

ENSIGN 122

Post Job Summary Cement Multiple Stages

Prepared for: Kevin Brakovec
Date Prepared: 2/17/10
Version: 1

Service Supervisor: Rick Congdon

Submitted by: Tim Gilchrist

HALLIBURTON

HALLIBURTON

Service Supervisor Reports

Job Log

Date/Time	Chart #	Activity Code	Pump Rate	Cum Vol	Pump	Pressure (psig)	Comments
02/13/2010 13:46		Start Job					RIG CIRCULATED WELL 1 HOUR PRIOR TO CEMENTING
02/13/2010 13:50		Test Lines				3278.0	
02/13/2010 13:52		Pump Spacer 1	6	24		327.0	RIG WATER WITH 80# MUDDLUSH III ADDED
02/13/2010 13:57		Pump Spacer 2	6	20		396.0	RIG WATER WITH 2% CLAYFIX
02/13/2010 14:01		Pump Lead Cement	8	151		464.0	340 SACKS 12PPG VERSACEM B1 MIXED WITH RIG WATER
02/13/2010 14:19		Pump Tail Cement	8	83		255.0	240 SACKS 13PPG VERSACEM B1 MIXED WITH RIG WATER
02/13/2010 14:31		Shutdown					
02/13/2010 14:32		Clean Lines					
02/13/2010 14:34		Drop Top Plug					4 1/2 " LATCHDOWN PLUG PRELOADED
02/13/2010 14:37		Pump Displacement	8	126		214.0	RIG WATER WITH 2% CLAYFIX
02/13/2010 14:58		Bump Plug	3			1403.0	CALCULATED PRESSURE TO LAND THE PLUG WAS 1268 PSI
02/13/2010 15:04		Check Floats				2613.0	FLOAT HELD
02/13/2010 15:05		End Job					

HALLIBURTON

Cementing Job Summary

The Road to Excellence Starts with Safety

Sold To #: 340078	Ship To #: UNKNOWN	Quote #:	Sales Order #: 7177989
Customer: ENCANA OIL & GAS (USA) INC. - EBUS		Customer Rep: PILCHER, ED	
Well Name: Laber	Well #: 44-24	API/UWI #: 05-013-06578-00	
Field: WATTENBERG	City (SAP): UNKNOWN	County/Parish: Boulder	State: Colorado
Legal Description: Section SESE24 Township 2N Range 69W			
Lat: N 40.118 deg. OR N 40 deg. 7 min. 4.944 secs.		Long: W 105.057 deg. OR W -106 deg. 56 min. 33.936 secs.	
Contractor: ENSIGN		Rig/Platform Name/Num: ENSIGN122	
Job Purpose: Cement Multiple Stages			
Well Type: Development Well		Job Type: Cement Multiple Stages	
Sales Person: FLING, MATTHEW		Srvc Supervisor: CONGDON, RICHARD	MBU ID Emp #: 320306

Job Personnel

HES Emp Name	Exp Hrs	Emp #	HES Emp Name	Exp Hrs	Emp #	HES Emp Name	Exp Hrs	Emp #
CONGDON, RICHARD S.		320306	PAUMEN, CORD Anthony		453759	RAMOS, REFUGIO Castro		435413
SIPNEFSKI, ROBERT Anthony		419391						

Equipment

HES Unit #	Distance-1 way	HES Unit #	Distance-1 way	HES Unit #	Distance-1 way	HES Unit #	Distance-1 way
10724567C	20 mile	10857012C	20 mile	10866497C	20 mile	10948695	20 mile
10977079C	20 mile	11341988C	20 mile				

Job Hours

Date	On Location Hours	Operating Hours	Date	On Location Hours	Operating Hours	Date	On Location Hours	Operating Hours
TOTAL			Total is the sum of each column separately					

Job

Formation Name	Formation Depth (MD)	Top	Bottom	Form Type	Job depth MD	Job Depth TVD	Water Depth	Perforation Depth (MD)	From	To
				BHST	8144.9 ft	8144.9 ft				
							Wk Ht Above Floor			
						5. ft				

Job Times

Date	Time	Time Zone
13 - Feb - 2010	07:00	MST
13 - Feb - 2010	10:30	MST
13 - Feb - 2010	13:46	MST
13 - Feb - 2010	15:05	MST
13 - Feb - 2010	16:00	MST

Well Data

Description	New / Used	Max pressure psig	Size in	ID in	Weight lbm/ft	Thread	Grade	Top MD ft	Bottom MD ft	Top TVD ft	Bottom TVD ft
Open Hole				7.875				684.	8155.	684.	8155.
Production Casing	New		4.5	4.	11.6				8144.9		8144.9
Surface Casing	Used		8.625	8.097	24.		J-55		684.		684.

Tools and Accessories

Type	Size	Qty	Make	Depth	Type	Size	Qty	Make	Depth	Type	Size	Qty	Make
Guide Shoe					Packer					Top Plug			
Float Shoe					Bridge Plug					Bottom Plug			
Float Collar					Retainer					SSR plug set			
Insert Float										Plug Container			
Stage Tool										Centralizers			

HALLIBURTON

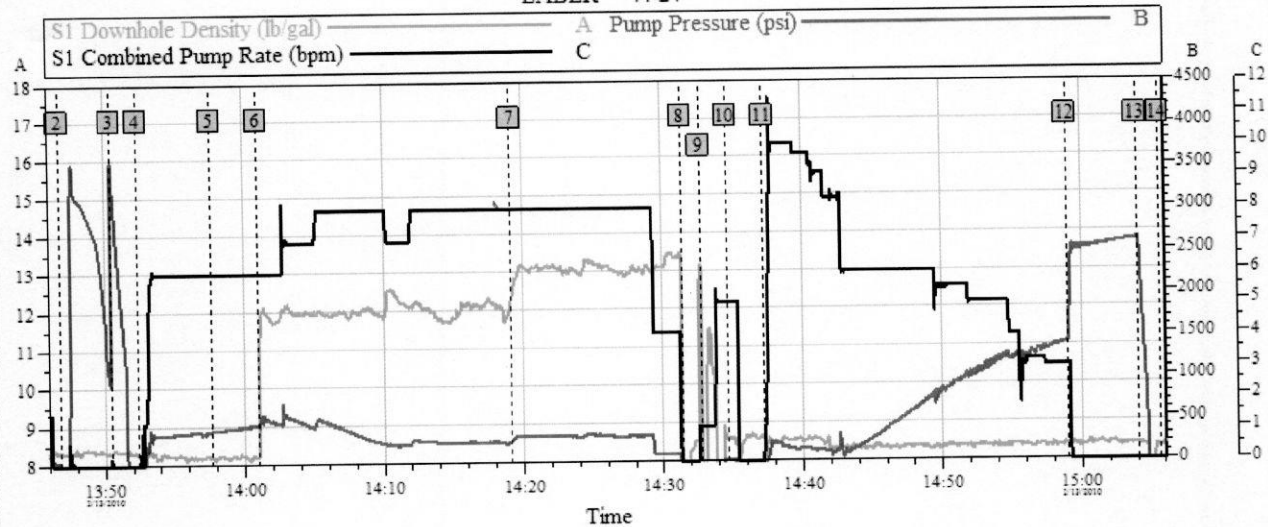
Cementing Job Summary

Miscellaneous Materials											
Gelling Agt		Conc		Surfactant		Conc		Acid Type		Qty	Conc %
Treatment Fld		Conc		Inhibitor		Conc		Sand Type		Size	Qty
Fluid Data											
Stage/Plug #: 1											
Fluid #	Stage Type	Fluid Name	Qty	Qty uom	Mixing Density lbm/gal	Yield ft ³ /sk	Mix Fluid Gal/sk	Rate bbl/min	Total Mix Fluid Gal/sk		
1	MUD FLUSH III	MUD FLUSH III - SBM (528788)	24.00	bbl	8.4	.0	42.0	6.0			
2	Clayfix 3		20.00	Gal	8.4	.0	42.0	6.0			
	2.5 gal/Mgal	CLAYFIX 3, TOTETANK (101583425)									
3	Versacem 12#	VERSACEM (TM) SYSTEM (452010)	340.0	sacks	12.	2.49	13.91	8.0	13.91		
	13.91 Gal	FRESH WATER									
4	Versacem 13#	VERSACEM (TM) SYSTEM (452010)	240.0	sacks	13.	1.95	9.93	8.0	9.93		
	9.93 Gal	FRESH WATER									
5	Clayfix Water Displacement		126.00	bbl	8.33	.0	.0	8.0			
	2.5 gal/Mgal	CLAYFIX 3, TOTETANK (101583425)									
Calculated Values			Pressures			Volumes					
Displacement		Shut In: Instant		Lost Returns		Cement Slurry		Pad			
Top Of Cement		5 Min		Cement Returns		Actual Displacement		Treatment			
Frac Gradient		15 Min		Spacers		Load and Breakdown		Total Job			
Rates											
Circulating		Mixing		Displacement		Avg. Job					
Cement Left In Pipe		Amount	24.37 ft	Reason	Shoe Joint						
Frac Ring # 1 @	ID	Frac ring # 2 @	ID	Frac Ring # 3 @	ID	Frac Ring # 4 @	ID				
The Information Stated Herein Is Correct				Customer Representative Signature							

HALLIBURTON

ENCANA OIL & GAS (USA) INC.

LABER 44-24



Global Event Log

Global Event Log											
Intersection		SDD	SPPP	SCPR	Intersection		SDD	SPPP	SCPR		
2	Start Job	13:46:45	8.340	1.000	0.000	3	Test Lines	13:50:28	8.340	3278	0.007
4	Mudflush III	13:52:24	8.300	-23.00	0.000	5	Clayfix III Water	13:57:37	8.260	396.0	6.000
6	12ppg Versacem B1	14:01:00	8.210	464.0	6.000	7	13ppg Versacem B1	14:19:10	12.34	255.0	8.000
8	Shutdown	14:31:23	6.770	-28.00	0.000	9	Clean Lines	14:32:42	13.17	-23.00	1.100
10	Drop Top Plug	14:34:37	8.580	15.00	5.000	11	Clayfix III Water	14:37:16	3.273	-23.99	1.100
12	Bump Plug	14:58:59	8.400	1403	3.000	13	Check Float	15:04:01	8.390	2613	0.000
14	End Job	15:05:36	8.330	-25.00	0.000						

Customer: ENCANA
Well Description: 4.5" PRODUCTION

Job Date: 13-Feb-2010
UWI: 05-013-06578

Sales Order #: 7177989

HALLIBURTON
OptiCem v6.4.2
13-Feb-10 15:12