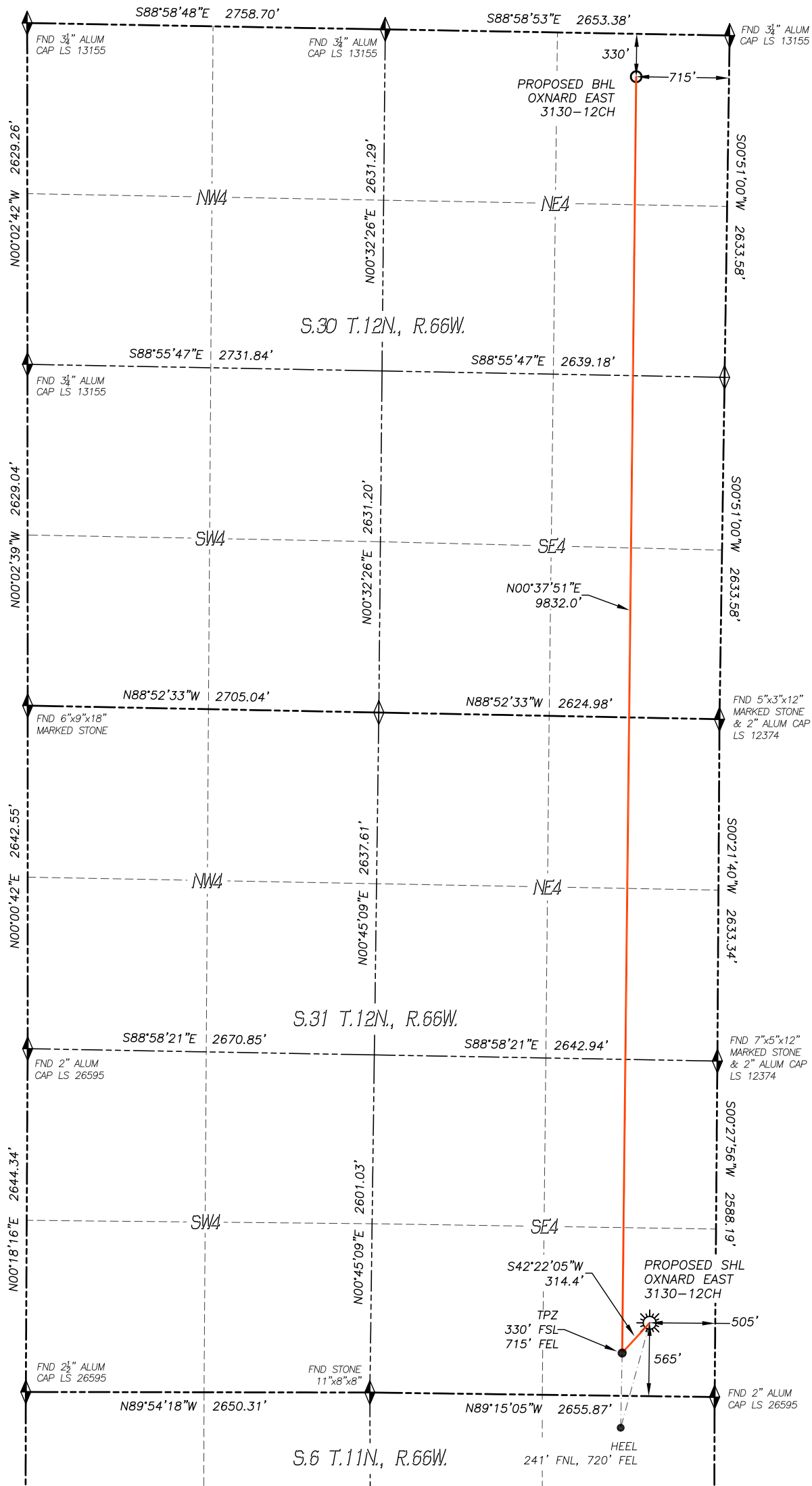


# WELL LOCATION CERTIFICATE

## OXNARD EAST 3130-12CH

SECTION: 31  
TOWNSHIP: 12N  
RANGE: 66W

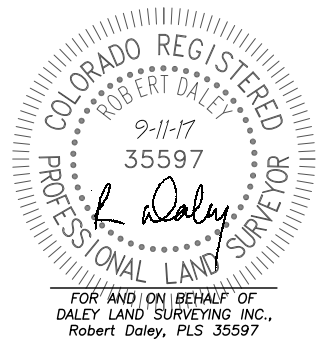


IN ACCORDANCE WITH A REQUEST FROM LONGS PEAK RESOURCES, LLC., DALEY LAND SURVEYING, INC. HAS DETERMINED THE SURFACE LOCATION OF THE OXNARD EAST 3130-12CH WELL TO BE 565' FSL, 505' FEL, AS MEASURED AT NINETY (90) DEGREES FROM THE SECTION LINES OF SECTION 31, TOWNSHIP 12 NORTH, RANGE 66 WEST, AND THE BOTTOM HOLE LOCATION TO BE 330' FNL, 715' FEL, AS MEASURED AT NINETY (90) DEGREES FROM THE SECTION LINES OF SECTION 30, TOWNSHIP 12 NORTH, RANGE 66 WEST, OF THE 6TH PRINCIPAL MERIDIAN, WELD COUNTY, COLORADO.

I HEREBY STATE THAT THIS WELL LOCATION CERTIFICATE WAS PREPARED BY ME OR UNDER MY DIRECT SUPERVISION, THAT THE WORK WAS COMPLETED ON 9/06/2017 FOR AND ON BEHALF OF LONGS PEAK RESOURCES, LLC., AND THAT THIS MAP DOES NOT REPRESENT A BOUNDARY SURVEY, IT IS NOT A LAND SURVEY PLAT OR AN IMPROVEMENT SURVEY PLAT AND IT IS NOT TO BE RELIED UPON FOR THE ESTABLISHMENT OF FENCE, BUILDING OR OTHER FUTURE IMPROVEMENT LINES.

**NOTES:**

- 1) BEARINGS FOR THIS MAP ARE ASSUMED AND BASED UPON GPS OBSERVATIONS MADE BETWEEN MONUMENTS LOCATED AT THE EAST QUARTER CORNER AND THE SOUTHEAST CORNER OF SECTION 31, T.12N., R.66W.
- 2) HORIZONTAL DATUM IS NAD83.
- 3) VERTICAL DATUM IS NAVD88 AND ORIGINATES FROM THE LOCAL C.O.R.S. NETWORK, UTILIZING THE GEOID12A MODEL.
- 4) SEE LOCATION DRAWING FOR VISIBLE IMPROVEMENTS WITHIN 500' OF PROPOSED DISTURBED AREA.
- 5) SURFACE USE: PASTURE.
- 6) INST. OPERATOR: SCOTT ESTABROOKS.



**NEAREST CULTURAL ITEMS:**

BUILDING: 2565'± SE  
 BUILDING UNIT: 2727'± SE  
 HIGH OCC. BLD. UNIT: 5280'+  
 DES. OUTSIDE ACTIVITY AREA: 5280'+  
 PUBLIC ROAD: 4721'± E  
 ABOVE GROUND UTILITY: 456'± E  
 RAILROAD: 5280'+  
 PROPERTY LINE: 505'± E

**NAD 83 LATITUDE AND LONGITUDE**

**SURFACE LOCATION:**

LATITUDE: N40.95912°  
 LONGITUDE: W104.81220°  
 ELEV: 5975'  
 PDOP: 1.6  
 QTR/QTR: SE4/SE4

**LANDING POINT/TPZ:**

LATITUDE: N40.95848°  
 LONGITUDE: W104.81296°

**BOTTOM HOLE:**

LATITUDE: N40.98546°  
 LONGITUDE: W104.81262°

**LEGEND**

- ◆ FOUND MONUMENT
- ◇ CALCULATED POSITION
- ☀ PROPOSED WELL
- BOTTOM HOLE
- ⊙ ABANDONED WELL
- ⊗ EXISTING WELL
- TPZ TOP PRODUCING ZONE

