

T7N, R80W, 6th P.M.

SandRidge Exploration & Production, LLC

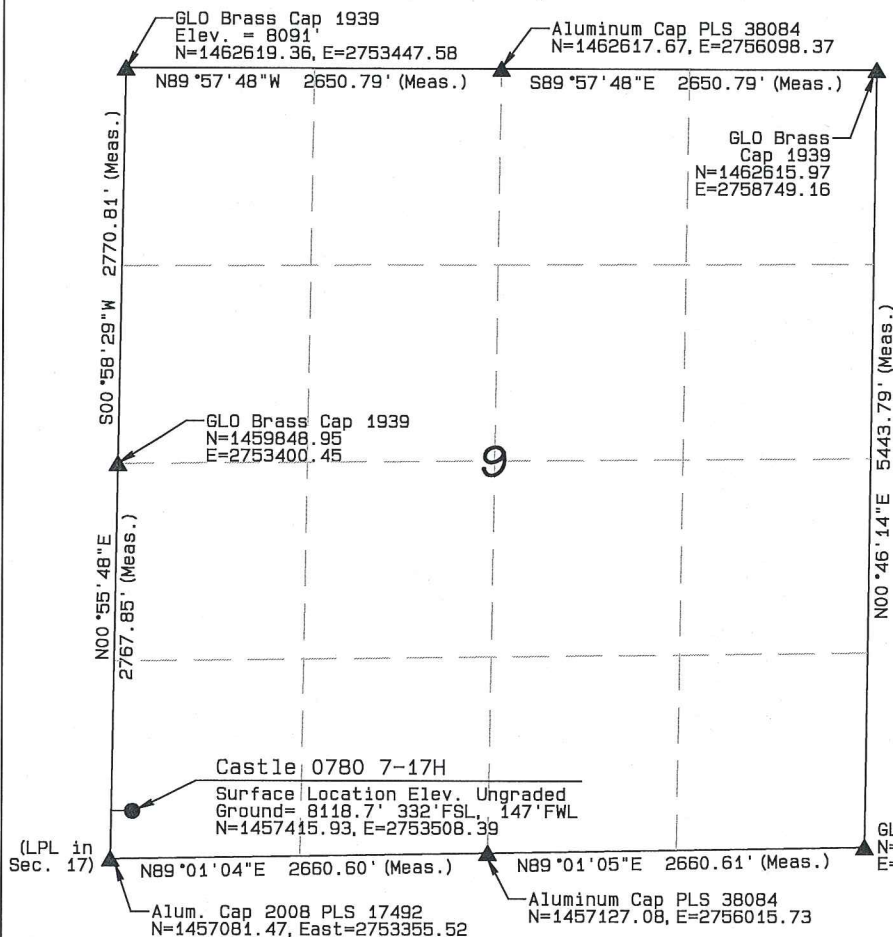
Well location, Castle 0780 7-17H20 located as shown in the SW1/4SW1/4 of Section 9, T7N, R80W, 6th P.M., Jackson County, Colorado.

BASIS OF BEARINGS:

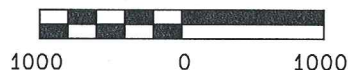
US STATE PLANE 1983
CO NORTH 0501 GRID

BASIS OF ELEVATION

SPOT ELEVATION AT THE NW CORNER OF SECTION 9, T7N, R80W, 6TH PM, TAKEN FROM THE COALMONT QUADRANGLE, USGS 7.5 MIN QUAD (TOPOGRAPHIC MAP) WITH SAID ELEVATION MARKED AS BEING 8091 FEET.



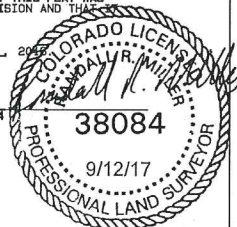
GRAPHIC SCALE 1"=1000'



I RANDALL R. MILLER, BEING A REGISTERED LAND SURVEYOR IN THE STATE OF COLORADO, DO HEREBY CERTIFY THAT THIS PLAT WAS MADE BY ME AND/OR UNDER MY DIRECT SUPERVISION AND THAT IT IS ACCURATE TO THE BEST OF MY KNOWLEDGE.

DATED THIS _____ DAY OF _____, 2017

RANDALL R. MILLER, COLORADO PLS NO. 38084



LEGEND

90° SYMBOL
FOUND CORNER
PROPOSED WELL
PROPOSED BHL/LPL



	NAD 83 (SURFACE LOCATION)
	LATITUDE=40.585619°N LONGITUDE=106.387480°W PDOP = 1.411
NAD 83 (TARGET BOTTOM HOLE)	NAD 83 (LANDING POINT LOCATION)
LATITUDE=40.555951°N LONGITUDE=106.391837°W	LATITUDE=40.584435°N LONGITUDE=106.391586°W

NORTH PARK ENGINEERING & CONSULTING, INC.

P.O. BOX 395
WALDEN, CO 80480
(970) 723-3725

DATE OF FIELD WORK: FEB 19, 2016 DRAWING COMPLETION: SEPT 12, 2017
SURVEYED BY: RRM DRAWN BY: TKH CHECKED BY: RRM
REVISED: 8/22/16

T7N, R80W, 6th P.M.

SandRidge Exploration & Production, LLC

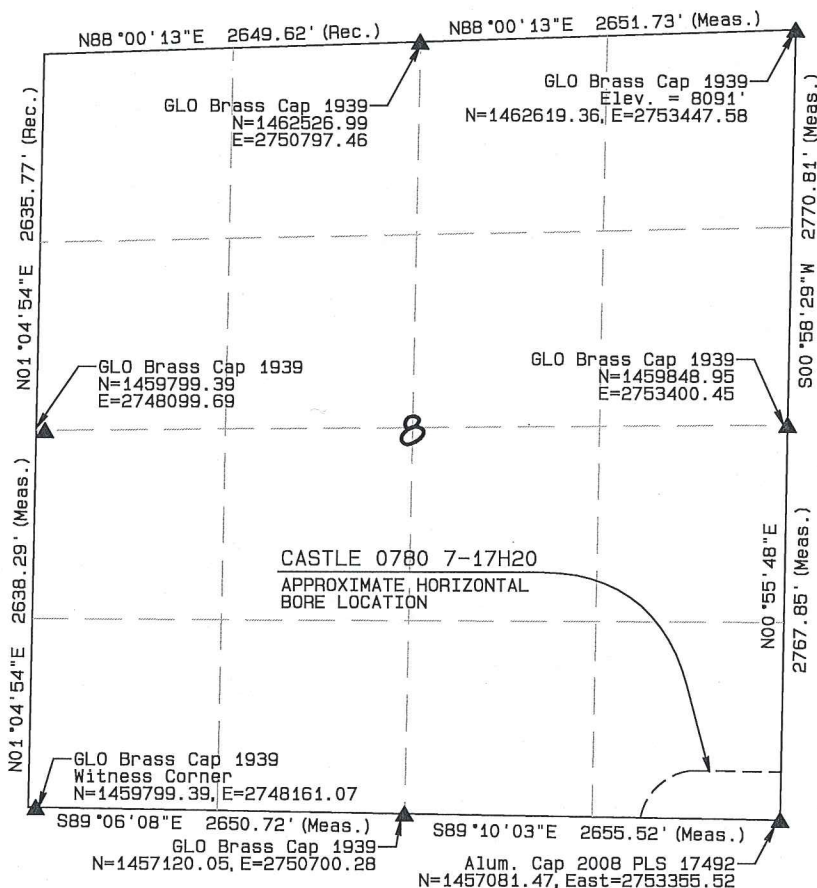
Well location, Castle 0780 7-17H20 located as shown in the SE1/4SE1/4 of Section 8, T7N, R80W, 6th P.M., Jackson County, Colorado.

BASIS OF BEARINGS:

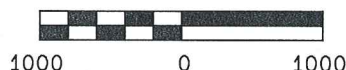
US STATE PLANE 1983
CO NORTH 0501 GRID

BASIS OF ELEVATION

SPOT ELEVATION AT THE NW CORNER OF SECTION 9, T7N, R80W, 6TH PM, TAKEN FROM THE COALMONT QUADRANGLE, USGS 7.5 MIN QUAD (TOPOGRAPHIC MAP) WITH SAID ELEVATION MARKED AS BEING 8091 FEET.



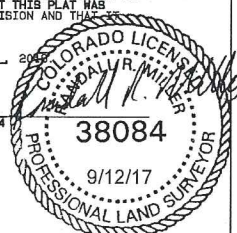
GRAPHIC SCALE 1"=1000'



I RANDALL R. MILLER, BEING A REGISTERED LAND SURVEYOR IN THE STATE OF COLORADO, DO HEREBY CERTIFY THAT THIS PLAT WAS MADE BY ME AND/OR UNDER MY DIRECT SUPERVISION AND THAT IT IS ACCURATE TO THE BEST OF MY KNOWLEDGE.

DATED THIS _____ DAY OF _____, 2017

RANDALL R. MILLER, COLORADO PLS NO. 38084



LEGEND

90° SYMBOL
FOUND CORNER
PROPOSED WELL
PROPOSED BHL/LPL



NAD 83 (SURFACE LOCATION)	LATITUDE=40.585619°N	
	LONGITUDE=106.387480°W PDOP = 1.411	
NAD 83 (TARGET BOTTOM HOLE)	NAD 83 (LANDING POINT LOCATION)	
	LATITUDE=40.555951°N LONGITUDE=106.391837°W	
	LATITUDE=40.584435°N LONGITUDE=106.391586°W	

NORTH PARK ENGINEERING & CONSULTING, INC.

P.O. BOX 395
WALDEN, CO 80480
(970) 723-3725

DATE OF FIELD WORK: FEB 19, 2016 DRAWING COMPLETION: SEPT 12, 2017
SURVEYED BY: RFM DRAWN BY: TKH CHECKED BY: RFM
REVISED: 9/14/16

T7N, R80W, 6th P.M.

SandRidge Exploration & Production, LLC

Landing Point Location, Castle 0780 7-17H20
as shown in the NE1/4NE1/4 of Section 17, T7N,
R80W, 6th P.M., Jackson County, Colorado.

BASIS OF BEARINGS:

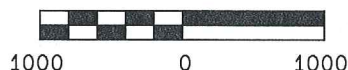
US STATE PLANE 1983
CO NORTH 0501 GRID

BASIS OF ELEVATION

SPOT ELEVATION AT THE NW CORNER OF SECTION 9,
T7N, R80W, 6TH PM, TAKEN FROM THE COALMONT
QUADRANGLE, USGS 7.5 MIN QUAD (TOPOGRAPHIC MAP)
WITH SAID ELEVATION MARKED AS BEING 8091 FEET.

Alum. Cap 2008
PLS 17492
N=1454453.54,
E=2753310.02

GRAPHIC SCALE 1"=1000'



I RANDALL R. MILLER, BEING A REGISTERED LAND SURVEYOR IN THE
STATE OF COLORADO, DO HEREBY CERTIFY THAT THIS PLAT WAS
MADE BY ME AND/OR UNDER MY DIRECT SUPERVISION AND THAT IT
IS ACCURATE TO THE BEST OF MY KNOWLEDGE.

DATED THIS _____ DAY OF _____

RANDALL R. MILLER, COLORADO PLS NO. 38084



GLO Brass Cap 1939
N=1451814.71, E=2753283.04

NORTH PARK ENGINEERING &
CONSULTING, INC.

P.O. BOX 395
WALDEN, CO 80480
(970) 723-3725

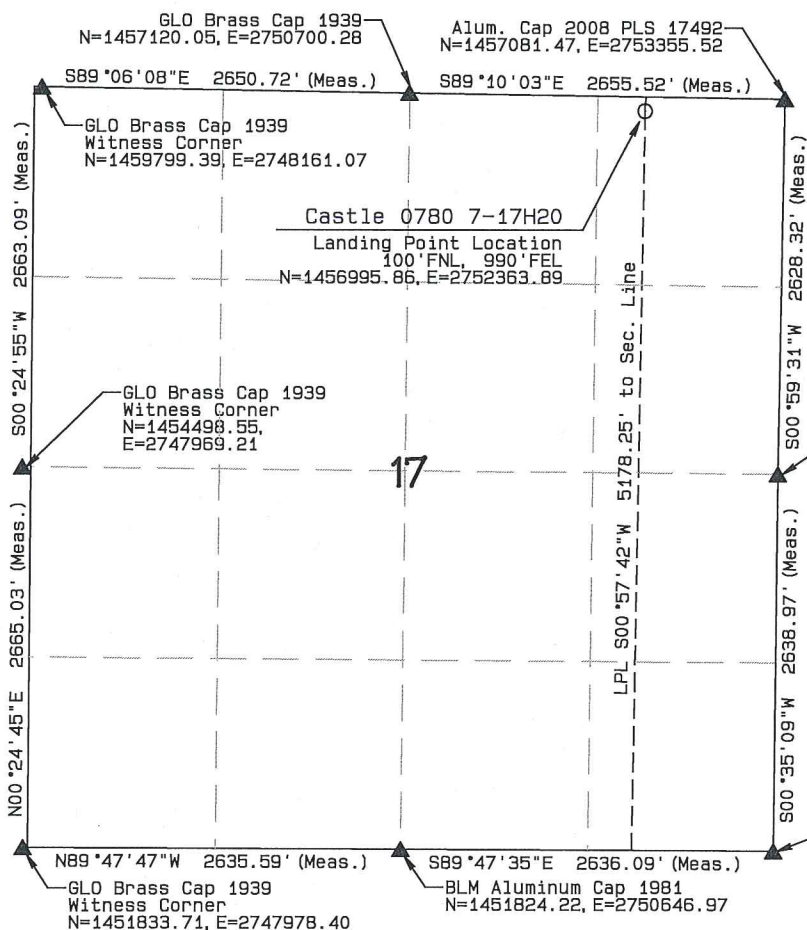
DATE OF FIELD WORK: FEB 19, 2016 DRAWING COMPLETION: SEPT 12, 2017
SURVEYED BY: RRM DRAWN BY: TKH CHECKED BY: RRM
REVISED: 8/22/16

LEGEND

90° SYMBOL
FOUND CORNER
PROPOSED WELL
PROPOSED BHL/LPL



	NAD 83 (SURFACE LOCATION)
	LATITUDE=40.585619°N LONGITUDE=106.387480°W PDOP = 1.411
NAD 83 (TARGET BOTTOM HOLE)	NAD 83 (LANDING POINT LOCATION)
LATITUDE=40.555951°N LONGITUDE=106.391837°W	LATITUDE=40.584435°N LONGITUDE=106.391586°W



T7N, R80W, 6th P.M.

SandRidge Exploration & Production, LLC

Bottom Hole Location, Castle 0780 7-17H20
as shown in the SE1/4SE1/4 of Section 20, T7N,
R80W, 6th P.M., Jackson County, Colorado.

BASIS OF BEARINGS:

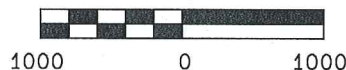
US STATE PLANE 1983
CO NORTH 0501 GRID

BASIS OF ELEVATION

SPOT ELEVATION AT THE NW CORNER OF SECTION 9,
T7N, R80W, 6TH PM, TAKEN FROM THE COALMONT
QUADRANGLE, USGS 7.5 MIN QUAD (TOPOGRAPHIC MAP)
WITH SAID ELEVATION MARKED AS BEING 8091 FEET.

BLM Aluminum
Cap 1982
N=1449179.77,
E=2753238.22

GRAPHIC SCALE 1"=1000'



I RANDALL R. MILLER, BEING A REGISTERED LAND SURVEYOR IN THE
STATE OF COLORADO, DO HEREBY CERTIFY THAT THIS PLAT WAS
MADE BY ME AND/OR UNDER MY DIRECT SUPERVISION AND THAT
IT IS ACCURATE TO THE BEST OF MY KNOWLEDGE.

DATED THIS _____ DAY OF _____, 2016

RANDALL R. MILLER, COLORADO PLS NO. 38084



GLO Brass Cap 1939
N=1446537.26, E=2753178.10

Castle 0780 7-17H
Bottom Hole Location
100' FSL, 990' FEL
N=1446620.15, E=2752189.73

Aluminum Cap 2007
(monument below road surface)
N=1446519.97, E=2747840.26

BLM Aluminum Cap 1981
N=1451824.22, E=2750646.97

GLO Brass
Cap 1939
N=1451814.71
E=2753283.04

GLO Brass Cap 1939
Witness Corner
N=1451833.71, E=2747978.40

N89°47'47"W 2635.59' (Meas.) S89°47'35"E 2636.09' (Meas.)

S01°59'01"W 2660.38' (Meas.) S01°42'20"W 2655.96' (Meas.)

GLO Brass Cap 1939
Witness Corner
N=1449178.75,
E=2747895.39

20

Sec. Line S00°57'42"W 5198.92' to TBH

S00°58'28"W 2635.32' (Meas.) S01°18'12"W 2643.19' (Meas.)

Aluminum Cap 2007
N=1446490.99, E=2750507.79

S89°22'39"E 2667.68' (Meas.)

N89°00'26"E 2670.72' (Meas.)

LEGEND

90° SYMBOL
FOUND CORNER
PROPOSED WELL
PROPOSED BHL/LPL



	NAD 83 (SURFACE LOCATION)
	LATITUDE=40.585619°N LONGITUDE=106.387480°W PDOP = 1.411
NAD 83 (TARGET BOTTOM HOLE)	NAD 83 (LANDING POINT LOCATION)
LATITUDE=40.555951°N LONGITUDE=106.391837°W	LATITUDE=40.584435°N LONGITUDE=106.391586°W

NORTH PARK ENGINEERING &
CONSULTING, INC.

P.O. BOX 395
WALDEN, CO 80480
(970) 723-3725

DATE OF FIELD WORK: FEB 19, 2016 DRAWING COMPLETION: SEPT 12, 2017
SURVEYED BY: RWM DRAWN BY: TKH CHECKED BY: RWM
REVISED: 8/22/16