

T7N, R80W, 6th P.M.

**SandRidge Exploration & Production, LLC**

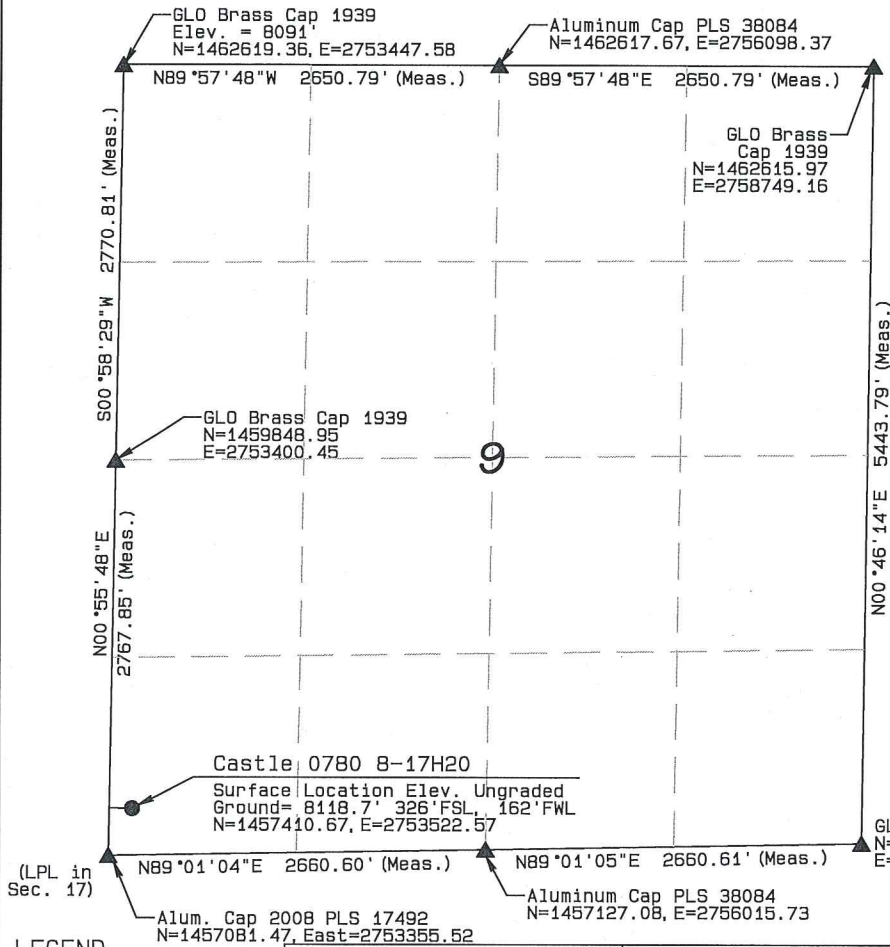
Well location, Castle 0780 8-17H20 located as shown in the SW1/4SW1/4 of Section 9, T7N, R80W, 6th P.M., Jackson County, Colorado.

BASIS OF BEARINGS:

US STATE PLANE 1983  
CO NORTH 0501 GRID

BASIS OF ELEVATION

SPOT ELEVATION AT THE NW CORNER OF SECTION 9, T7N, R80W, 6TH PM, TAKEN FROM THE COALMONT QUADRANGLE, USGS 7.5 MIN QUAD (TOPOGRAPHIC MAP) WITH SAID ELEVATION MARKED AS BEING 8091 FEET.



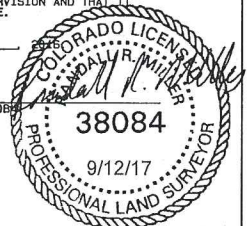
GRAPHIC SCALE 1"=1000'



I RANDALL R. MILLER, BEING A REGISTERED LAND SURVEYOR IN THE STATE OF COLORADO, DO HEREBY CERTIFY THAT THIS PLAT WAS MADE BY ME AND/OR UNDER MY DIRECT SUPERVISION AND THAT IT IS ACCURATE TO THE BEST OF MY KNOWLEDGE.

DATED THIS \_\_\_\_\_ DAY OF \_\_\_\_\_

RANDALL R. MILLER, COLORADO PLS NO. 38084



**LEGEND**

90° SYMBOL  
FOUND CORNER  
PROPOSED WELL  
PROPOSED BHL/LPL



**NAD 83 (SURFACE LOCATION)**

LATITUDE=40.585605°N  
LONGITUDE=106.387429°W PDOP = 1.341

**NAD 83 (TARGET BOTTOM HOLE)**

LATITUDE=40.556001°N  
LONGITUDE=106.389461°W

**NAD 83 (LANDING POINT LOCATION)**

LATITUDE=40.584427°N  
LONGITUDE=106.389210°W

**NORTH PARK ENGINEERING & CONSULTING, INC.**

P.O. BOX 395  
WALDEN, CO 80480  
(970) 723-3725

DATE OF FIELD WORK: FEB 19, 2016 DRAWING COMPLETION: SEPT 12, 2017  
SURVEYED BY: RRM DRAWN BY: TKH CHECKED BY: RRM  
REVISED: 8/22/16

T7N, R80W, 6th P.M.

## SandRidge Exploration & Production, LLC

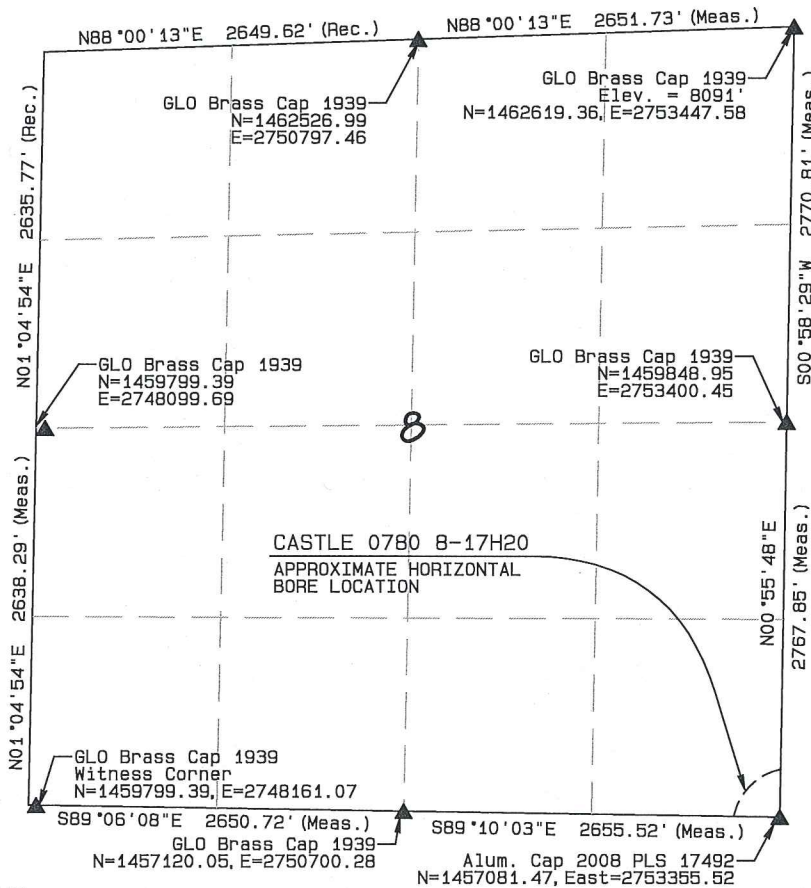
Well location, Castle 0780 8-17H20 located as shown in the SE1/4SE1/4 of Section 8, T7N, R80W, 6th P.M., Jackson County, Colorado.

### BASIS OF BEARINGS:

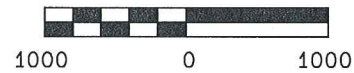
US STATE PLANE 1983  
CO NORTH 0501 GRID

### BASIS OF ELEVATION

SPOT ELEVATION AT THE NW CORNER OF SECTION 9, T7N, R80W, 6TH PM, TAKEN FROM THE COALMONT QUADRANGLE, USGS 7.5 MIN QUAD (TOPOGRAPHIC MAP) WITH SAID ELEVATION MARKED AS BEING 8091 FEET.



GRAPHIC SCALE 1"=1000'



I RANDALL R. MILLER, BEING A REGISTERED LAND SURVEYOR IN THE STATE OF COLORADO, DO HEREBY CERTIFY THAT THIS PLAT WAS MADE BY ME AND/OR UNDER MY DIRECT SUPERVISION AND THAT IT IS ACCURATE TO THE BEST OF MY KNOWLEDGE.

DATED THIS \_\_\_\_\_ DAY OF \_\_\_\_\_, 2017

RANDALL R. MILLER, COLORADO PLS NO. 38084



### LEGEND

90° SYMBOL  
FOUND CORNER  
PROPOSED WELL  
PROPOSED BHL/LPL



	NAD 83 (SURFACE LOCATION)
	LATITUDE=40.585605°N LONGITUDE=106.387429°W PDOP = 1.341
NAD 83 (TARGET BOTTOM HOLE)	NAD 83 (LANDING POINT LOCATION)
LATITUDE=40.556001°N LONGITUDE=106.389461°W	LATITUDE=40.584427°N LONGITUDE=106.389210°W

NORTH PARK ENGINEERING & CONSULTING, INC.

P.O. BOX 395  
WALDEN, CO 80480  
(970) 723-3725

DATE OF FIELD WORK: FEB 19, 2016 DRAWING COMPLETION: SEPT 12, 2017  
SURVEYED BY: RFM DRAWN BY: TKH CHECKED BY: RFM  
REVISED: 9/14/16

T7N, R80W, 6th P.M.

## SandRidge Exploration & Production, LLC

Landing Point Location, Castle 0780 B-17H20  
as shown in the NE1/4NE1/4 of Section 17, T7N,  
R80W, 6th P.M., Jackson County, Colorado.

### BASIS OF BEARINGS:

US STATE PLANE 1983  
CO NORTH 0501 GRID

### BASIS OF ELEVATION

SPOT ELEVATION AT THE NW CORNER OF SECTION 9,  
T7N, R80W, 6TH PM, TAKEN FROM THE COALMONT  
QUADRANGLE, USGS 7.5 MIN QUAD (TOPOGRAPHIC MAP)  
WITH SAID ELEVATION MARKED AS BEING 8091 FEET.

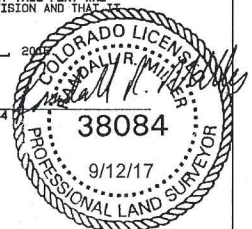
Alum. Cap 2008  
PLS 17492  
N=1454453.54,  
E=2753310.02

GRAPHIC SCALE 1"=1000'

I RANDALL R. MILLER, BEING A REGISTERED LAND SURVEYOR IN THE  
STATE OF COLORADO, DO HEREBY CERTIFY THAT THIS PLAT WAS  
MADE BY ME AND/OR UNDER MY DIRECT SUPERVISION AND THAT IT  
IS ACCURATE TO THE BEST OF MY KNOWLEDGE.

DATED THIS \_\_\_\_\_ DAY OF \_\_\_\_\_, 2017

RANDALL R. MILLER, COLORADO PLS NO. 38084



GLO Brass Cap 1939  
N=1451814.71, E=2753283.04

### LEGEND

90° SYMBOL  
FOUND CORNER  
PROPOSED WELL  
PROPOSED BHL/LPL



	NAD 83 (SURFACE LOCATION)
	LATITUDE=40.585605°N LONGITUDE=106.387429°W PDOP = 1.341
NAD 83 (TARGET BOTTOM HOLE)	NAD 83 (LANDING POINT LOCATION)
LATITUDE=40.556001°N LONGITUDE=106.389461°W	LATITUDE=40.584427°N LONGITUDE=106.389210°W

NORTH PARK ENGINEERING &  
CONSULTING, INC.

P.O. BOX 395  
WALDEN, CO 80480  
(970) 723-3725

DATE OF FIELD WORK: FEB 19, 2016 DRAWING COMPLETION: SEPT 12, 2017  
SURVEYED BY: RWM DRAWN BY: TKH CHECKED BY: RWM  
REVISED: 8/22/16



T7N, R80W, 6th P.M.

## SandRidge Exploration & Production, LLC

Bottom Hole Location, Castle 0780 8-17H20  
as shown in the SE1/4SE1/4 of Section 20, T7N,  
R80W, 6th P.M., Jackson County, Colorado.

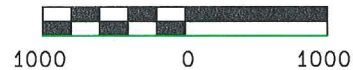
### BASIS OF BEARINGS:

US STATE PLANE 1983  
CO NORTH 0501 GRID

### BASIS OF ELEVATION

SPOT ELEVATION AT THE NW CORNER OF SECTION 9,  
T7N, R80W, 6TH PM, TAKEN FROM THE COALMONT  
QUADRANGLE, USGS 7.5 MIN QUAD (TOPOGRAPHIC MAP)  
WITH SAID ELEVATION MARKED AS BEING 8091 FEET.

GRAPHIC SCALE 1"=1000'



I RANDALL R. MILLER, BEING A REGISTERED LAND SURVEYOR IN THE  
STATE OF COLORADO, DO HEREBY CERTIFY THAT THIS PLAT WAS  
MADE BY ME AND/OR UNDER MY DIRECT SUPERVISION AND THAT  
IT IS ACCURATE TO THE BEST OF MY KNOWLEDGE.

DATED THIS \_\_\_\_\_ DAY OF \_\_\_\_\_, 2016

RANDALL R. MILLER, COLORADO PLS NO. 38084



GLO Brass Cap 1939  
N=1446537.26, E=2753178.10

Castle 0780 8-17H20  
Bottom Hole Location  
100' FSL, 330' FEL  
N=1446631.59, E=2752850.16

BLM Aluminum  
Cap 1982  
N=1449179.77  
E=2753238.22

BLM Aluminum Cap 1981  
N=1451824.22, E=2750646.97

GLO Brass Cap 1939  
Witness Corner  
N=1449178.75,  
E=2747895.39

GLO Brass Cap 1939  
Witness Corner  
N=1451833.71, E=2747978.40

GLO Brass Cap 1939  
N=1451814.71, E=2753283.04

N89°47'47"W 2635.59' (Meas.)

S89°47'35"E 2636.09' (Meas.)

S01°42'20"W 2655.96' (Meas.)

S00°56'28"W 2635.32' (Meas.)

Sec. Line S00°57'39"W 5185.09' to TBH

S01°18'12"W 2643.19' (Meas.)

S89°22'39"E 2667.68' (Meas.)  
Aluminum Cap 2007  
(monument below road surface)  
N=1446519.97, E=2747840.26

N89°00'25"E 2670.72' (Meas.)  
Aluminum Cap 2007  
N=1446490.99, E=2750507.79

### LEGEND

90° SYMBOL  
FOUND CORNER  
PROPOSED WELL  
PROPOSED BHL/LPL



	NAD 83 (SURFACE LOCATION)
	LATITUDE=40.585605°N LONGITUDE=106.387429°W PDOP = 1.341
NAD 83 (TARGET BOTTOM HOLE)	NAD 83 (LANDING POINT LOCATION)
LATITUDE=40.556001°N LONGITUDE=106.389461°W	LATITUDE=40.584427°N LONGITUDE=106.389210°W

NORTH PARK ENGINEERING &  
CONSULTING, INC.

P.O. BOX 395  
WALDEN, CO 80480  
(970) 723-3725

DATE OF FIELD WORK: FEB 19, 2016 DRAWING COMPLETION: SEPT 12, 2017  
SURVEYED BY: RFM DRAWN BY: TKH CHECKED BY: RFM  
REVISED: 8/22/16