

T7N, R80W, 6th P.M.

## SandRidge Exploration & Production, LLC

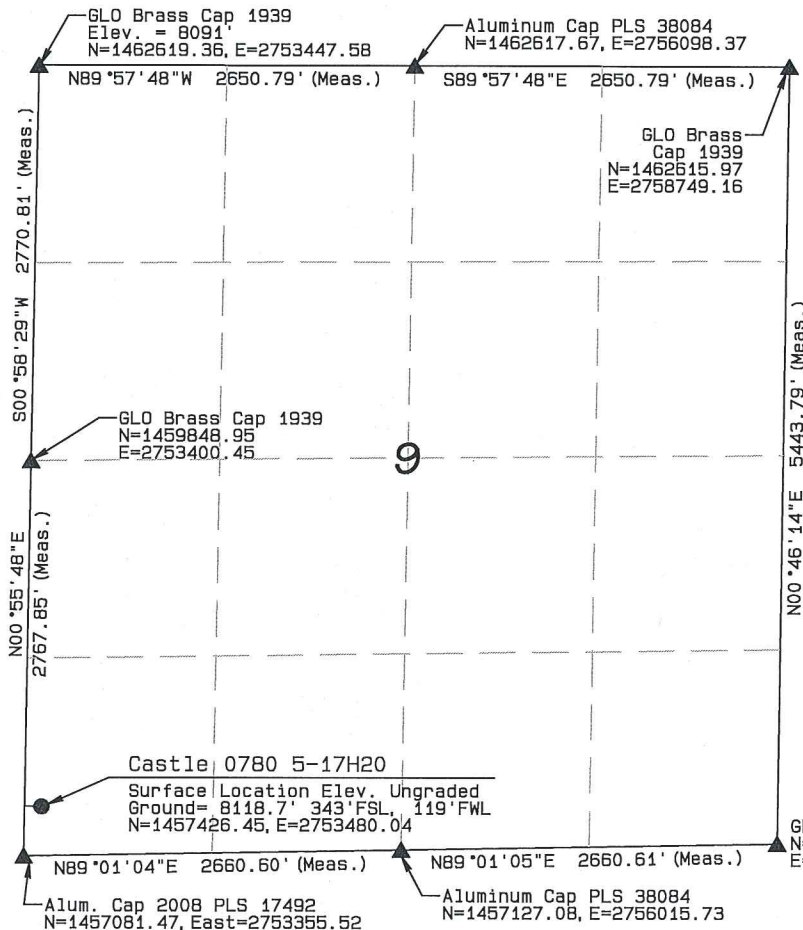
Well location, Castle 0780 5-17H20 located as shown in the SW1/4SW1/4 of Section 9, T7N, R80W, 6th P.M., Jackson County, Colorado.

### BASIS OF BEARINGS:

US STATE PLANE 1983  
CO NORTH 0501 GRID

### BASIS OF ELEVATION

SPOT ELEVATION AT THE NW CORNER OF SECTION 9, T7N, R80W, 6TH PM, TAKEN FROM THE COALMONT QUADRANGLE, USGS 7.5 MIN QUAD (TOPOGRAPHIC MAP) WITH SAID ELEVATION MARKED AS BEING 8091 FEET.



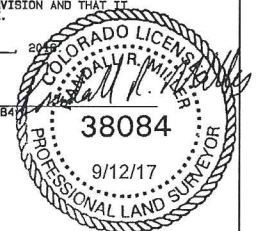
GRAPHIC SCALE 1"=1000'

1000 0 1000

I RANDALL R. MILLER, BEING A REGISTERED LAND SURVEYOR IN THE STATE OF COLORADO, DO HEREBY CERTIFY THAT THIS PLAT WAS MADE BY ME AND/OR UNDER MY DIRECT SUPERVISION AND THAT IT IS ACCURATE TO THE BEST OF MY KNOWLEDGE.

DATED THIS \_\_\_\_\_ DAY OF \_\_\_\_\_, 2017

RANDALL R. MILLER, COLORADO PLS NO. 38084



### LEGEND

90° SYMBOL  
FOUND CORNER  
PROPOSED WELL  
PROPOSED BHL/LPL



	NAD 83 (SURFACE LOCATION)
	LATITUDE=40.585647°N
	LONGITUDE=106.387583°W PDOP = 1.333
NAD 83 (TARGET BOTTOM HOLE)	NAD 83 (LANDING POINT LOCATION)
LATITUDE=40.555852°N	LATITUDE=40.584451°N
LONGITUDE=106.396589°W	LONGITUDE=106.396338°W

NORTH PARK ENGINEERING & CONSULTING, INC.

P.O. BOX 395  
WALDEN, CO 80480  
(970) 723-3725

DATE OF FIELD WORK: FEB 19, 2016 DRAWING COMPLETION: SEPT 12, 2017  
SURVEYED BY: RRM DRAWN BY: TKH CHECKED BY: RRM  
REVISED: 8/22/16

T7N, R80W, 6th P.M.

## SandRidge Exploration & Production, LLC

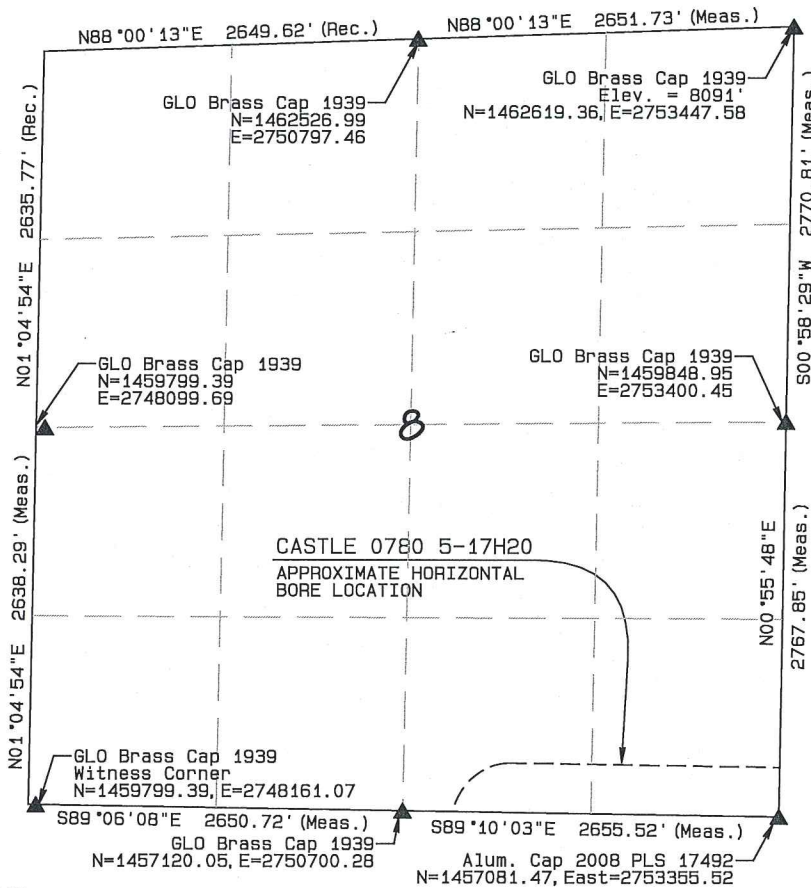
Well location, Castle 0780 5-17H20 located as shown in the S1/2SE1/4 of Section 8, T7N, R80W, 6th P.M., Jackson County, Colorado.

### BASIS OF BEARINGS:

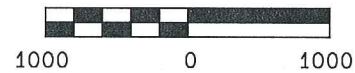
US STATE PLANE 1983  
CO NORTH 0501 GRID

### BASIS OF ELEVATION

SPOT ELEVATION AT THE NW CORNER OF SECTION 9, T7N, R80W, 6TH PM, TAKEN FROM THE COALMONT QUADRANGLE, USGS 7.5 MIN QUAD (TOPOGRAPHIC MAP) WITH SAID ELEVATION MARKED AS BEING 8091 FEET.



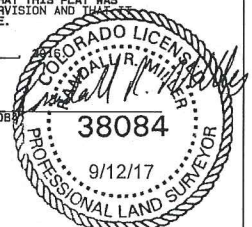
GRAPHIC SCALE 1"=1000'



I RANDALL R. MILLER, BEING A REGISTERED LAND SURVEYOR IN THE STATE OF COLORADO, DO HEREBY CERTIFY THAT THIS PLAT WAS MADE BY ME AND/OR UNDER MY DIRECT SUPERVISION AND THAT IT IS ACCURATE TO THE BEST OF MY KNOWLEDGE.

DATED THIS \_\_\_\_\_ DAY OF \_\_\_\_\_

RANDALL R. MILLER, COLORADO PLS NO. 38084



### LEGEND

90° SYMBOL  
FOUND CORNER  
PROPOSED WELL  
PROPOSED BHL/LPL



	NAD 83 (SURFACE LOCATION)	
	LATITUDE=40.585647°N	PDOP = 1.333
	LONGITUDE=106.387583°W	
	NAD 83 (TARGET BOTTOM HOLE)	
	LATITUDE=40.555852°N	LATITUDE=40.584451°N
	LONGITUDE=106.396589°W	LONGITUDE=106.396338°W

NORTH PARK ENGINEERING & CONSULTING, INC.

P.O. BOX 395  
WALDEN, CO 80480  
(970) 723-3725

DATE OF FIELD WORK: FEB 19, 2016 DRAWING COMPLETION: SEPT 12, 2017  
SURVEYED BY: RRM DRAWN BY: TKH CHECKED BY: RRM  
REVISED: 9/14/16

# T7N, R80W, 6th P.M.

## SandRidge Exploration & Production, LLC

Landing Point Location, Castle 0780 5-17H20  
as shown in the NW1/4NE1/4 of Section 17, T7N,  
R80W, 6th P.M., Jackson County, Colorado.

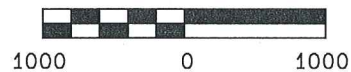
### BASIS OF BEARINGS:

US STATE PLANE 1983  
CO NORTH 0501 GRID

### BASIS OF ELEVATION

SPOT ELEVATION AT THE NW CORNER OF SECTION 9,  
T7N, R80W, 6TH PM, TAKEN FROM THE COALMONT  
QUADRANGLE, USGS 7.5 MIN QUAD (TOPOGRAPHIC MAP)  
WITH SAID ELEVATION MARKED AS BEING 8091 FEET.

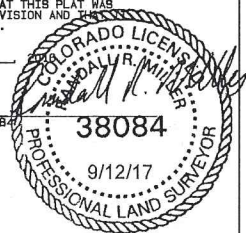
GRAPHIC SCALE 1"=1000'



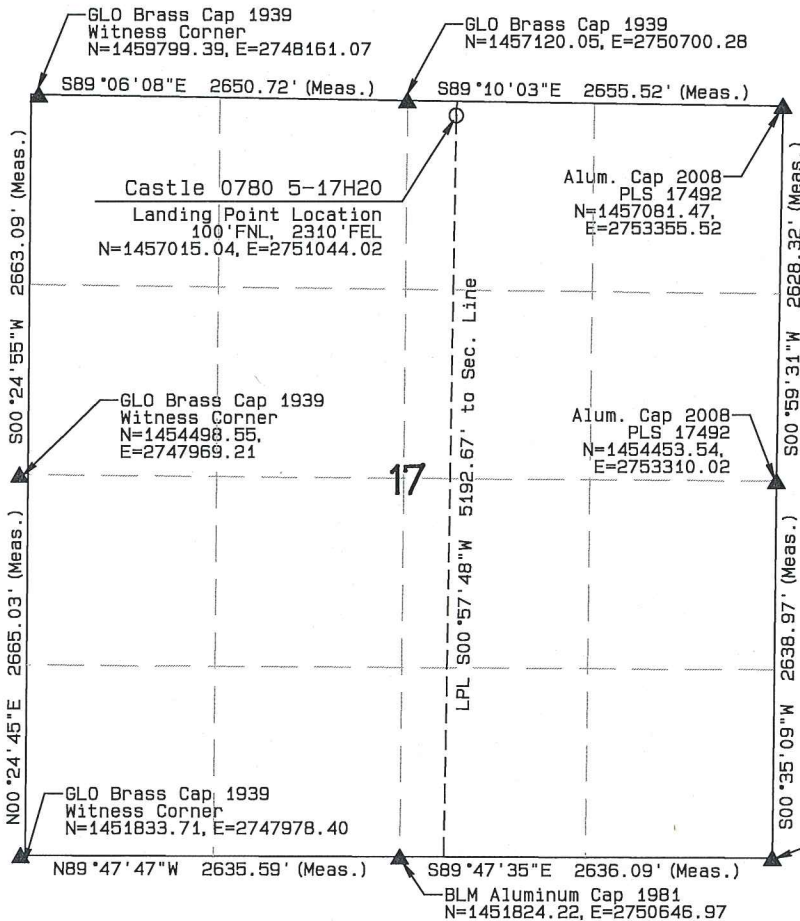
I RANDALL R. MILLER, BEING A REGISTERED LAND SURVEYOR IN THE  
STATE OF COLORADO, DO HEREBY CERTIFY THAT THIS PLAT WAS  
MADE BY ME AND/OR UNDER MY DIRECT SUPERVISION AND THAT  
IT IS ACCURATE TO THE BEST OF MY KNOWLEDGE.

DATED THIS \_\_\_\_\_ DAY OF \_\_\_\_\_

RANDALL R. MILLER, COLORADO PLS NO. 38084



GLO Brass Cap 1939  
Witness Corner  
N=1451814.71, E=2753283.04



### LEGEND

90° SYMBOL  
FOUND CORNER  
PROPOSED WELL  
PROPOSED BHL/LPL



	NAD 83 (SURFACE LOCATION)
	LATITUDE=40.585647°N LONGITUDE=106.387583°W PDOP = 1.333
NAD 83 (TARGET BOTTOM HOLE)	NAD 83 (LANDING POINT LOCATION)
LATITUDE=40.555852°N LONGITUDE=106.396589°W	LATITUDE=40.584451°N LONGITUDE=106.396338°W

## NORTH PARK ENGINEERING & CONSULTING, INC.

P.O. BOX 395  
WALDEN, CO 80480  
(970) 723-3725

DATE OF FIELD WORK: FEB 18, 2018 DRAWING COMPLETION: SEPT 12, 2017  
SURVEYED BY: RWM DRAWN BY: TKH CHECKED BY: RWM  
REVISED: 8/22/18



T7N, R80W, 6th P.M.

**SandRidge Exploration & Production, LLC**

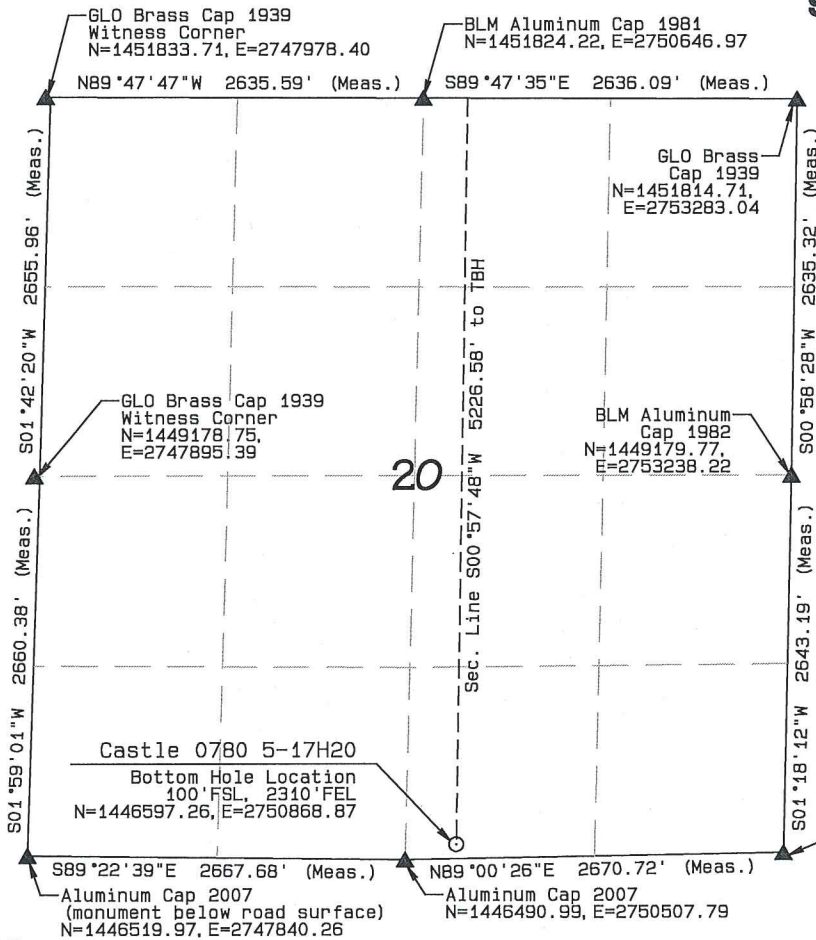
Bottom Hole Location, Castle 0780 5-17H20  
as shown in the SW1/4SE1/4 of Section 20, T7N,  
R80W, 6th P.M., Jackson County, Colorado.

**BASIS OF BEARINGS:**

US STATE PLANE 1983  
CO NORTH 0501 GRID

**BASIS OF ELEVATION**

SPOT ELEVATION AT THE NW CORNER OF SECTION 9,  
T7N, R80W, 6TH PM, TAKEN FROM THE COALMONT  
QUADRANGLE, USGS 7.5 MIN QUAD (TOPOGRAPHIC MAP)  
WITH SAID ELEVATION MARKED AS BEING 8091 FEET.



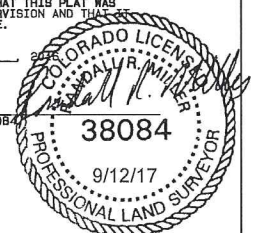
GRAPHIC SCALE 1"=1000'

1000 0 1000

I RANDALL R. MILLER, BEING A REGISTERED LAND SURVEYOR IN THE  
STATE OF COLORADO, DO HEREBY CERTIFY THAT THIS PLAT WAS  
MADE BY ME AND/OR UNDER MY DIRECT SUPERVISION AND THAT IT  
IS ACCURATE TO THE BEST OF MY KNOWLEDGE.

DATED THIS \_\_\_\_\_ DAY OF \_\_\_\_\_, 2017

RANDALL R. MILLER, COLORADO PLS NO. 38084



**LEGEND**

- 90° SYMBOL
- FOUND CORNER
- PROPOSED WELL
- PROPOSED BHL/LPL

	NAD 83 (SURFACE LOCATION)
	LATITUDE=40.585647°N
	LONGITUDE=106.387583°W PDOP = 1.333
NAD 83 (TARGET BOTTOM HOLE)	NAD 83 (LANDING POINT LOCATION)
LATITUDE=40.555852°N	LATITUDE=40.584451°N
LONGITUDE=106.396589°W	LONGITUDE=106.396338°W

**NORTH PARK ENGINEERING & CONSULTING, INC.**

P.O. BOX 395  
WALDEN, CO 80480  
(970) 723-3725

DATE OF FIELD WORK: FEB 19, 2016 DRAWING COMPLETION: SEPT 12, 2017  
SURVEYED BY: RRM DRAWN BY: TKH CHECKED BY: RRM  
REVISED: 8/22/16