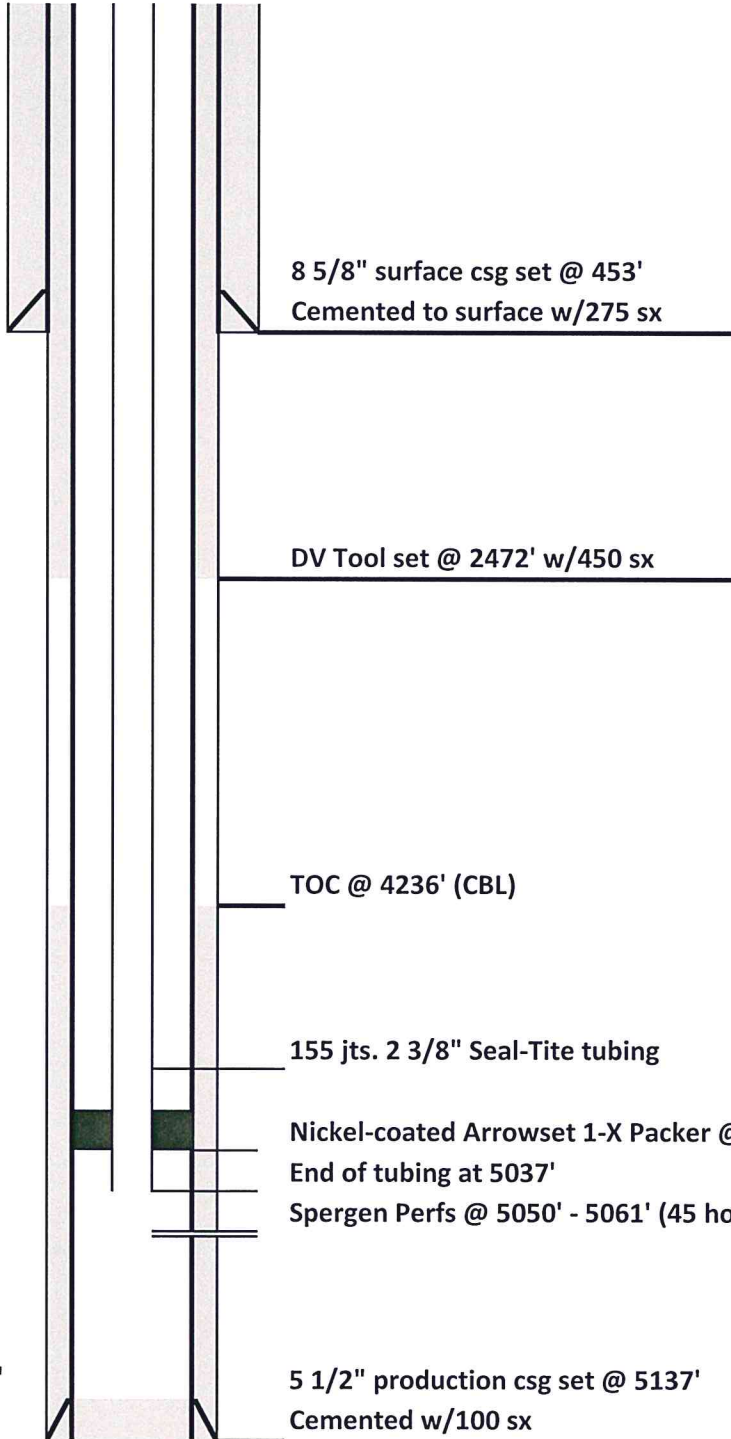




**DRILLING COMPANY, INC.**  
**WICHITA, KANSAS**

**Current Wellbore Diagram**



Date:	9/8/2017
Well Name:	Quiver Unit #2
Location:	2450' FNL & 1860' FEL SW/4 NE/4 1-17S-48W
County:	Kiowa
State:	Colorado
API:	05-061-06763
GL:	4138'
KB:	4149'
Spud Date:	8/4/2000

Drilled as the UPLRC-George A #2

PBTD = 5092'  
RTD = 5136'