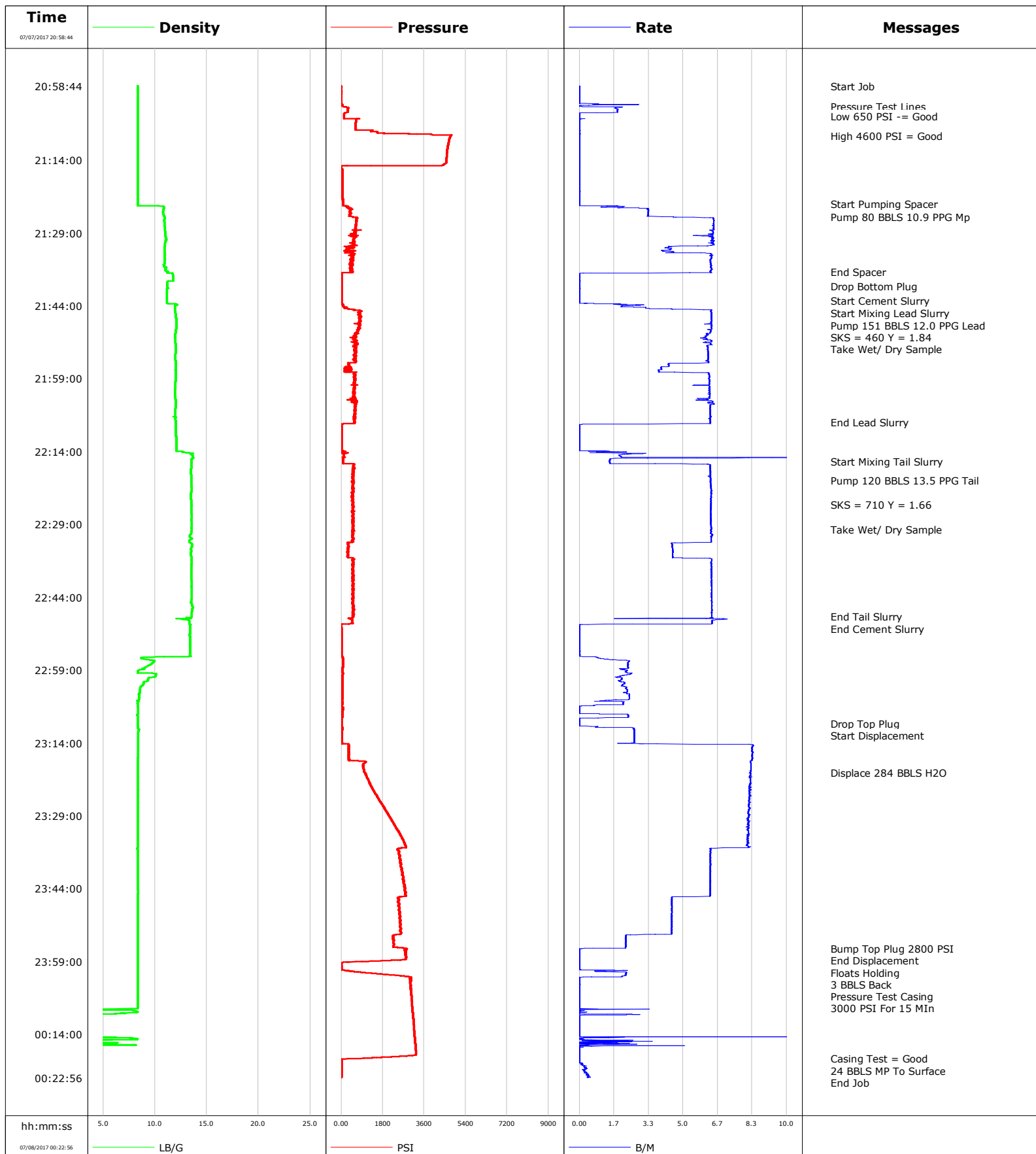


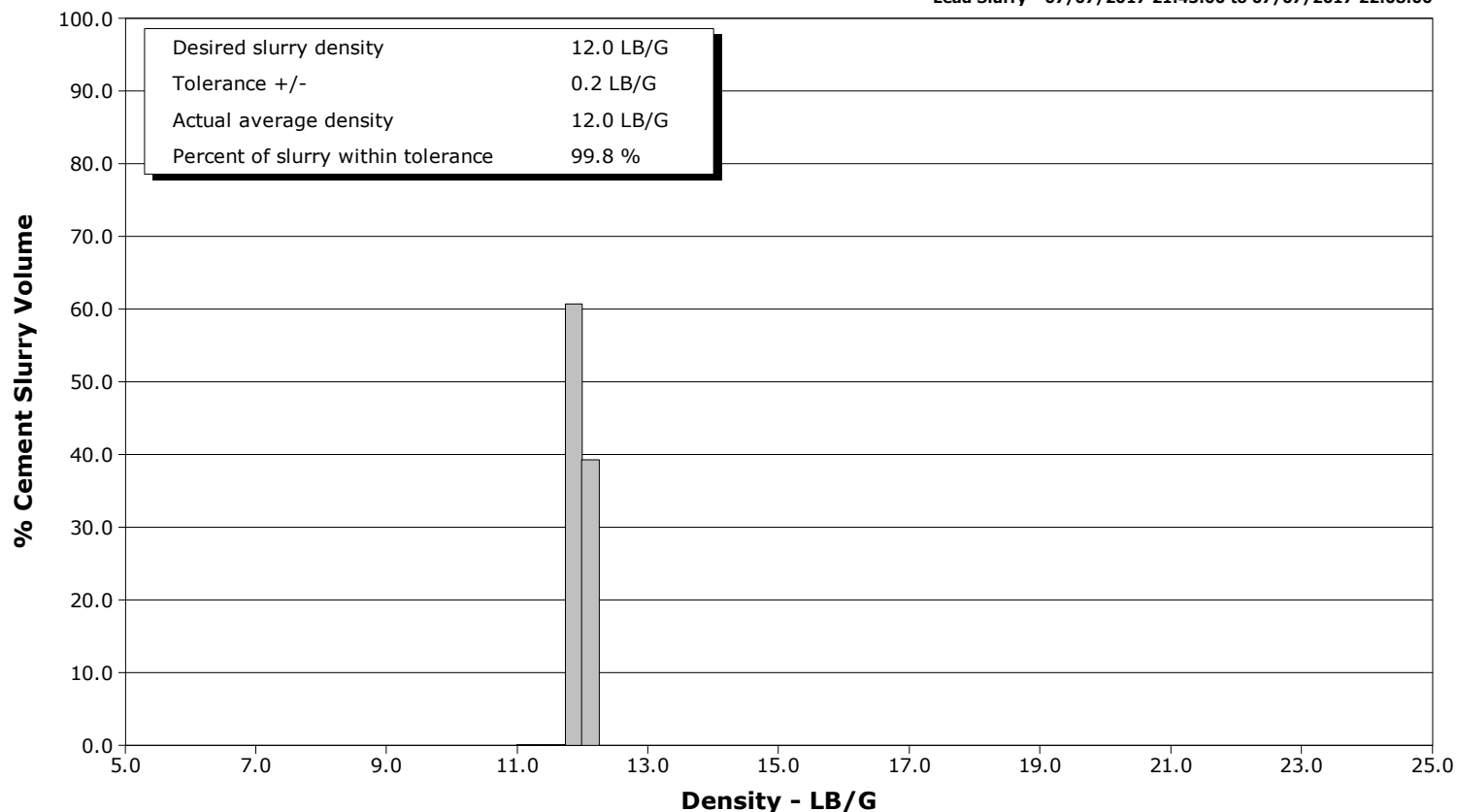
<b>Well</b>	Hilgers	<b>Client</b>	Anadarko
<b>Field</b>	Wattenberg	<b>SIR No.</b>	2540420
<b>Engineer</b>	Conley Jensen/ Joe Sanchez	<b>Job Type</b>	5.5" Monobore
<b>Country</b>	United States	<b>Job Date</b>	07-07-2017



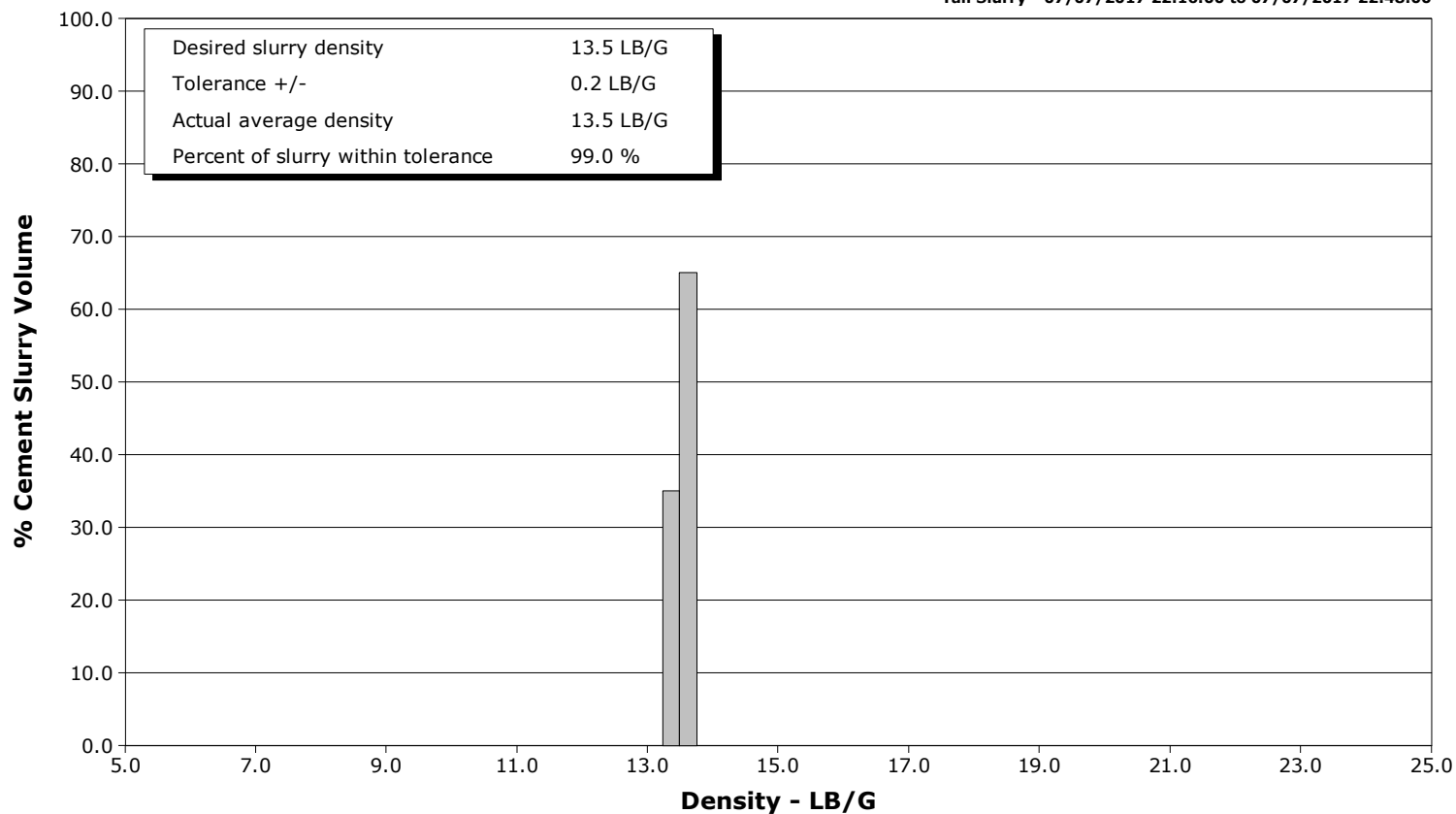
**Well** Hilgers  
**Field** Wattenberg  
**Engineer** Conley Jensen/ Joe Sanchez  
**Country** United States

**Client** Anadarko  
**SIR No.** 2540420  
**Job Type** 5.5" Monobore  
**Job Date** 07-07-2017

**Lead Slurry - 07/07/2017 21:43:00 to 07/07/2017 22:08:00**



**Tail Slurry - 07/07/2017 22:16:00 to 07/07/2017 22:48:00**



# Cementing Service Report

				Customer Anadarko			Job Number 2540420				
Well Hilgers 34N-22HZ			Location (legal)			Schlumberger Location CWY			Job Start Jul/07/2017		
Field Wattenberg		Formation Name/Type Shale		Deviation deg		Bit Size 7.9 in		Well MD 12303.0 ft		Well TVD 7121.0 ft	
County Juneau		State/Province Colorado		BHP psi		BHST 224 degF		BHCT 216 degF		Pore Press. Gradient lb/gal	
Well Master 0631684909		API/UWI 05123433120000									
Rig Name Xtreme 24		Drilled For Oil		Service Via Land		Casing/Liner					
						Depth, ft		Size, in		Weight, lb/ft	
										Grade	
										Thread	
Offshore Zone		Well Class New		Well Type Development		1871.0		9.6		36.0	
						12303.0		5.5		17.0	
										J55	
										8RD	
										P110	
										8RD	
Drilling Fluid Type		Max. Density lb/gal		Plastic Viscosity cP		Tubing/Drill Pipe					
						T/D		Depth, ft		Size, in	
										Weight, lb/ft	
										Grade	
										Thread	
Service Line Cementing		Job Type 5.5" Monobore									
Max. Allowed Tub. Press psi		Max. Allowed Ann. Press psi		WH Connection Double Cement head		Perforations/Open Hole					
						Top, ft		Bottom, ft		shot/ft	
						ft		ft		No. of Shots	
						ft		ft		Total Interval ft	
						ft		ft		Diameter in	
						Treat Down Casing		Displacement 284.0 bbl		Packer Type	
										Packer Depth ft	
						Tubing Vol. bbl		Casing Vol. 286.0 bbl		Annular Vol. 412.0 bbl	
										Openhole Vol. 730.0 bbl	
Casing/Tubing Secured <input checked="" type="checkbox"/>		1 Hole Vol. Circulated prior to Cement <input checked="" type="checkbox"/>				Casing Tools		Squeeze Job			
Lift Pressure psi						Shoe Type Float		Squeeze Type			
Pipe Rotated <input type="checkbox"/>		Pipe Reciprocated <input type="checkbox"/>				Shoe Depth 12303.0 ft		Tool Type			
No. Centralizers		Top Plugs 1		Bottom Plugs 1		Stage Tool Type		Tool Depth ft			
Cement Head Type Double						Stage Tool Depth ft		Tail Pipe Size in			
Job Scheduled For Jul/07/2017 06:00		Arrived on Location Jul/07/2017 06:00		Leave Location Jul/08/2017 02:00		Collar Type Float		Tail Pipe Depth ft			
						Collar Depth 12212.0 ft		Sqz. Total Vol. bbl			
Date	Time 24-hr clock	Treating Pressure PSI	Flow Rate B/M	Density LB/G	Volume BBL	Message					
07/07/2017	20:58:44	2	0.0	8.33	0.0	Started Acquisition					
07/07/2017	20:58:46	2	0.0	8.33	0.0	Start Job					
07/07/2017	20:59:24	2	0.0	8.33	0.0						
07/07/2017	21:00:04	2	0.0	8.33	0.0						
07/07/2017	21:00:44	1	0.0	8.33	0.0						
07/07/2017	21:01:24	2	0.0	8.33	0.0						
07/07/2017	21:02:04	-0	0.0	8.33	0.0						
07/07/2017	21:02:44	66	0.5	8.33	0.5						
07/07/2017	21:03:00	129	0.1	8.33	0.5	Pressure Test Lines					
07/07/2017	21:03:24	296	1.8	8.33	1.1						
07/07/2017	21:04:04	286	1.8	8.33	2.4						
07/07/2017	21:04:44	129	0.0	8.33	2.8						
07/07/2017	21:05:00	130	0.0	8.33	2.8	Low 650 PSI -= Good					
07/07/2017	21:05:24	129	0.0	8.33	2.8						
07/07/2017	21:06:04	632	0.0	8.33	2.8						
07/07/2017	21:06:44	624	0.0	8.33	2.8						
07/07/2017	21:07:24	621	0.0	8.33	2.8						
07/07/2017	21:08:04	1290	0.0	8.33	2.8						
07/07/2017	21:08:44	3917	0.0	8.33	2.8						
07/07/2017	21:09:00	4765	0.0	8.33	2.8	High 4600 PSI = Good					
07/07/2017	21:09:24	4722	0.0	8.33	2.8						

Well			Field		Job Start		Customer		Job Number	
Hilgers 34N-22HZ			Wattenberg		Jul/07/2017		Anadarko		2540420	
Date	Time 24-hr clock	Treating Pressure PSI	Flow Rate B/M	Density LB/G	Volume BBL	Message				
07/07/2017	21:10:44	4650	0.0	8.33	2.8					
07/07/2017	21:11:24	4628	0.0	8.33	2.8					
07/07/2017	21:12:04	4615	0.0	8.33	2.8					
07/07/2017	21:12:44	4598	0.0	8.33	2.8					
07/07/2017	21:13:24	4583	0.0	8.33	2.8					
07/07/2017	21:14:04	4571	0.0	8.33	2.8					
07/07/2017	21:14:44	4536	0.0	8.33	2.8					
07/07/2017	21:15:24	-1	0.0	8.33	2.8					
07/07/2017	21:16:04	56	0.0	8.33	2.8					
07/07/2017	21:16:44	55	0.0	8.33	2.8					
07/07/2017	21:17:24	55	0.0	8.33	2.8					
07/07/2017	21:18:04	56	0.0	8.33	0.0					
07/07/2017	21:18:44	58	0.0	8.33	0.0					
07/07/2017	21:19:24	59	0.0	8.33	0.0					
07/07/2017	21:20:04	61	0.0	8.33	0.0					
07/07/2017	21:20:44	62	0.0	8.33	0.0					
07/07/2017	21:21:24	65	0.0	8.33	0.0					
07/07/2017	21:22:04	66	0.0	8.33	0.0					
07/07/2017	21:22:44	67	0.0	8.33	0.0					
07/07/2017	21:23:00	68	0.0	8.33	0.0	Start Pumping Spacer				
07/07/2017	21:23:24	70	0.0	8.33	0.0					
07/07/2017	21:24:04	382	3.3	10.84	1.3					
07/07/2017	21:24:44	358	3.3	10.78	3.5					
07/07/2017	21:25:24	400	3.3	10.84	5.7					
07/07/2017	21:25:41	492	4.3	10.91	6.7	Pump 80 BBLS 10.9 PPG Mp				
07/07/2017	21:26:04	648	6.5	10.94	8.8					
07/07/2017	21:26:44	650	6.5	10.90	13.1					
07/07/2017	21:27:24	642	6.5	10.93	17.4					
07/07/2017	21:28:04	606	6.5	10.95	21.8					
07/07/2017	21:28:44	620	6.4	10.99	26.0					
07/07/2017	21:29:24	566	6.4	11.00	30.3					
07/07/2017	21:30:04	563	6.5	11.04	34.5					
07/07/2017	21:30:44	535	6.5	11.04	38.8					
07/07/2017	21:31:24	508	6.5	10.96	43.1					
07/07/2017	21:32:04	433	4.1	10.92	46.7					
07/07/2017	21:32:44	193	4.0	10.92	49.5					
07/07/2017	21:33:24	509	6.4	10.93	52.9					
07/07/2017	21:34:04	486	6.4	10.93	57.2					
07/07/2017	21:34:44	379	6.3	10.93	61.4					
07/07/2017	21:35:24	387	6.3	10.92	65.6					
07/07/2017	21:36:04	353	6.3	11.11	69.9					
07/07/2017	21:36:44	388	6.4	11.01	74.1					
07/07/2017	21:37:00	421	6.3	11.25	75.8	End Spacer				
07/07/2017	21:37:24	14	0.0	11.67	77.6					
07/07/2017	21:38:04	7	0.0	11.75	77.6					
07/07/2017	21:38:44	6	0.0	11.75	0.0					
07/07/2017	21:39:24	7	0.0	11.20	0.0					
07/07/2017	21:40:00	7	0.0	11.19	0.0	Drop Bottom Plug				
07/07/2017	21:40:04	7	0.0	11.19	0.0					
07/07/2017	21:40:44	6	0.0	11.14	0.0					
07/07/2017	21:41:24	7	0.0	11.14	0.0					
07/07/2017	21:42:04	6	0.0	11.14	0.0					
07/07/2017	21:42:44	7	0.0	11.14	0.0					
07/07/2017	21:43:00	6	0.0	11.14	0.0	Start Cement Slurry				

Well			Field	Job Start		Customer	Job Number	
Hilgers 34N-22HZ			Wattenberg		Jul/07/2017		Anadarko	2540420
Date	Time 24-hr clock	Treating Pressure PSI	Flow Rate B/M	Density LB/G	Volume BBL	Message		
07/07/2017	21:44:04	82	2.0	11.91	1.1			
07/07/2017	21:44:44	281	4.5	11.91	3.1			
07/07/2017	21:45:24	766	6.4	11.97	7.2			
07/07/2017	21:46:04	802	6.4	12.02	11.5			
07/07/2017	21:46:44	801	6.4	12.04	15.7			
07/07/2017	21:47:24	768	6.4	12.04	19.9			
07/07/2017	21:48:00	752	6.4	12.04	23.7	Pump 151 BBLS 12.0 PPG Lead		
07/07/2017	21:48:04	760	6.4	12.04	24.2			
07/07/2017	21:48:33	777	6.4	12.04	27.2	SKS = 460 Y = 1.84		
07/07/2017	21:48:44	754	6.4	12.04	28.4	Take Wet/ Dry Sample		
07/07/2017	21:49:24	708	6.3	12.01	32.6			
07/07/2017	21:50:04	611	6.2	11.94	36.8			
07/07/2017	21:50:44	571	6.1	11.94	40.8			
07/07/2017	21:51:24	734	6.4	11.98	45.0			
07/07/2017	21:52:04	586	6.4	11.99	49.2			
07/07/2017	21:52:44	587	6.2	12.01	53.3			
07/07/2017	21:53:24	623	6.2	12.02	57.4			
07/07/2017	21:54:04	577	6.2	11.97	61.6			
07/07/2017	21:54:44	571	6.2	11.96	65.7			
07/07/2017	21:55:24	554	6.1	12.00	69.8			
07/07/2017	21:56:04	296	4.3	12.02	73.5			
07/07/2017	21:56:44	146	3.9	12.01	76.3			
07/07/2017	21:57:24	237	3.8	11.99	78.9			
07/07/2017	21:58:04	589	6.2	12.02	82.3			
07/07/2017	21:58:44	619	6.3	12.02	86.4			
07/07/2017	21:59:24	564	6.3	11.99	90.6			
07/07/2017	22:00:04	587	6.3	11.97	94.8			
07/07/2017	22:00:44	628	6.3	11.95	98.9			
07/07/2017	22:01:24	579	6.2	11.91	103.1			
07/07/2017	22:02:04	552	6.3	11.91	107.3			
07/07/2017	22:02:44	582	6.3	11.94	111.4			
07/07/2017	22:03:24	645	5.9	11.99	115.6			
07/07/2017	22:04:04	633	6.2	12.00	119.7			
07/07/2017	22:04:44	620	6.3	11.99	124.0			
07/07/2017	22:05:24	636	6.3	11.98	128.2			
07/07/2017	22:06:04	625	6.3	11.96	132.4			
07/07/2017	22:06:44	593	6.3	11.97	136.6			
07/07/2017	22:07:24	558	6.3	11.96	140.8			
07/07/2017	22:08:00	590	6.3	11.98	144.6	End Lead Slurry		
07/07/2017	22:08:04	567	6.3	11.99	145.0			
07/07/2017	22:08:44	1	0.0	12.01	146.9			
07/07/2017	22:09:24	-1	0.0	12.02	146.9			
07/07/2017	22:10:04	1	0.0	12.03	146.9			
07/07/2017	22:10:44	1	0.0	12.03	0.0			
07/07/2017	22:11:24	2	0.0	12.04	0.0			
07/07/2017	22:12:04	2	0.0	12.04	0.0			
07/07/2017	22:12:44	2	0.0	12.05	0.0			
07/07/2017	22:13:24	1	0.0	12.05	0.0			
07/07/2017	22:14:04	109	1.8	12.73	0.2			
07/07/2017	22:14:44	105	1.9	13.59	1.5			
07/07/2017	22:15:24	78	3.3	13.65	4.1			
07/07/2017	22:16:00	79	1.5	13.55	5.1	Start Mixing Tail Slurry		
07/07/2017	22:16:04	78	1.4	13.56	5.2			
07/07/2017	22:16:44	544	6.3	13.48	7.0			

Well			Field	Job Start		Customer	Job Number	
Hilgers 34N-22HZ			Wattenberg		Jul/07/2017		Anadarko	2540420
Date	Time 24-hr clock	Treating Pressure PSI	Flow Rate B/M	Density LB/G	Volume BBL	Message		
07/07/2017	22:18:04	514	6.3	13.43	15.4			
07/07/2017	22:18:44	506	6.3	13.47	19.6			
07/07/2017	22:19:24	472	6.3	13.48	23.8			
07/07/2017	22:20:00	450	6.3	13.50	27.6	Pump 120 BBLS 13.5 PPG Tail		
07/07/2017	22:20:04	474	6.3	13.50	28.0			
07/07/2017	22:20:44	442	6.3	13.51	32.3			
07/07/2017	22:21:24	484	6.4	13.52	36.5			
07/07/2017	22:22:04	484	6.3	13.54	40.7			
07/07/2017	22:22:44	481	6.4	13.45	45.0			
07/07/2017	22:23:24	465	6.3	13.44	49.2			
07/07/2017	22:24:04	481	6.3	13.48	53.4			
07/07/2017	22:24:44	535	6.3	13.50	57.7			
07/07/2017	22:25:00	485	6.3	13.52	59.3	SKS = 710 Y = 1.66		
07/07/2017	22:25:24	524	6.4	13.51	61.9			
07/07/2017	22:26:04	504	6.4	13.52	66.1			
07/07/2017	22:26:44	498	6.3	13.51	70.3			
07/07/2017	22:27:24	451	6.3	13.54	74.6			
07/07/2017	22:28:04	470	6.3	13.51	78.8			
07/07/2017	22:28:44	453	6.3	13.53	83.0			
07/07/2017	22:29:24	463	6.3	13.54	87.2			
07/07/2017	22:30:00	494	6.4	13.53	91.1	Take Wet/ Dry Sample		
07/07/2017	22:30:04	487	6.3	13.54	91.5			
07/07/2017	22:30:44	501	6.3	13.49	95.7			
07/07/2017	22:31:24	475	6.4	13.37	100.0			
07/07/2017	22:32:04	467	6.3	13.53	104.2			
07/07/2017	22:32:44	455	6.4	13.35	108.4			
07/07/2017	22:33:24	313	4.5	13.58	111.6			
07/07/2017	22:34:04	256	4.5	13.47	114.5			
07/07/2017	22:34:44	255	4.5	13.47	117.5			
07/07/2017	22:35:24	261	4.5	13.44	120.5			
07/07/2017	22:36:04	489	6.4	13.53	123.7			
07/07/2017	22:36:44	505	6.3	13.53	127.9			
07/07/2017	22:37:24	473	6.4	13.52	132.2			
07/07/2017	22:38:04	509	6.4	13.48	136.4			
07/07/2017	22:38:44	513	6.4	13.48	140.7			
07/07/2017	22:39:24	481	6.4	13.49	144.9			
07/07/2017	22:40:04	492	6.4	13.50	149.2			
07/07/2017	22:40:44	483	6.4	13.52	153.4			
07/07/2017	22:41:24	474	6.4	13.53	157.6			
07/07/2017	22:42:04	500	6.4	13.52	161.9			
07/07/2017	22:42:44	488	6.4	13.52	166.1			
07/07/2017	22:43:24	469	6.4	13.52	170.4			
07/07/2017	22:44:04	496	6.4	13.53	174.6			
07/07/2017	22:44:44	498	6.4	13.50	178.9			
07/07/2017	22:45:24	484	6.4	13.55	183.1			
07/07/2017	22:46:04	539	6.4	13.63	187.4			
07/07/2017	22:46:44	505	6.4	13.59	191.6			
07/07/2017	22:47:24	482	6.4	13.56	195.9			
07/07/2017	22:48:00	472	6.4	13.54	199.7	End Tail Slurry		
07/07/2017	22:48:04	509	6.4	13.54	200.1			
07/07/2017	22:48:44	453	6.4	13.26	204.3			
07/07/2017	22:49:24	466	6.4	13.30	208.6			
07/07/2017	22:50:04	-5	0.0	13.41	209.7			
07/07/2017	22:50:44	4	0.0	13.41	209.7			

Well			Field	Job Start		Customer	Job Number	
Hilgers 34N-22HZ			Wattenberg		Jul/07/2017		Anadarko	2540420
Date	Time 24-hr clock	Treating Pressure PSI	Flow Rate B/M	Density LB/G	Volume BBL	Message		
07/07/2017	22:52:04	4	0.0	13.39	209.7			
07/07/2017	22:52:44	4	0.0	13.39	209.7			
07/07/2017	22:53:24	4	0.0	13.38	209.7			
07/07/2017	22:54:04	4	0.0	13.38	209.7			
07/07/2017	22:54:44	4	0.0	13.38	209.8			
07/07/2017	22:55:24	4	0.0	13.38	209.8			
07/07/2017	22:56:04	4	0.0	13.40	209.8			
07/07/2017	22:56:44	65	1.2	8.93	210.2			
07/07/2017	22:57:24	66	2.3	9.84	211.6			
07/07/2017	22:58:04	64	2.3	9.38	213.1			
07/07/2017	22:58:44	41	1.9	8.77	214.7			
07/07/2017	22:59:24	57	2.2	8.34	216.1			
07/07/2017	23:00:04	55	2.2	10.07	217.7			
07/07/2017	23:00:44	55	2.0	9.36	219.0			
07/07/2017	23:01:24	48	2.0	9.03	220.3			
07/07/2017	23:02:04	44	2.1	8.85	221.8			
07/07/2017	23:02:44	54	2.2	8.57	223.2			
07/07/2017	23:03:24	54	2.3	8.51	224.7			
07/07/2017	23:04:04	59	2.4	8.44	226.3			
07/07/2017	23:04:44	60	2.4	8.47	227.9			
07/07/2017	23:05:24	-2	1.0	8.29	229.2			
07/07/2017	23:06:04	47	2.1	8.33	230.5			
07/07/2017	23:06:44	64	0.0	8.39	230.9			
07/07/2017	23:07:24	40	0.0	8.36	231.0			
07/07/2017	23:08:04	53	1.7	8.37	231.0			
07/07/2017	23:08:44	56	2.3	8.33	232.5			
07/07/2017	23:09:24	-1	0.0	8.34	0.0			
07/07/2017	23:10:00	-3	0.0	8.34	0.0	Drop Top Plug		
07/07/2017	23:10:04	-2	0.0	8.34	0.0			
07/07/2017	23:10:44	5	0.8	8.34	0.2			
07/07/2017	23:11:24	35	2.6	8.42	1.7			
07/07/2017	23:12:04	38	2.6	8.39	3.4			
07/07/2017	23:12:44	37	2.6	8.37	5.2			
07/07/2017	23:13:24	35	2.7	8.37	1.1			
07/07/2017	23:14:04	10	2.5	8.37	2.8			
07/07/2017	23:14:44	316	8.3	8.37	7.1			
07/07/2017	23:15:24	309	8.3	8.37	12.7			
07/07/2017	23:16:04	304	8.3	8.35	18.2			
07/07/2017	23:16:44	320	8.3	8.35	23.8			
07/07/2017	23:17:24	310	8.3	8.35	29.4			
07/07/2017	23:18:04	1015	8.3	8.34	34.9			
07/07/2017	23:18:44	933	8.3	8.35	40.4			
07/07/2017	23:19:24	959	8.3	8.35	45.9			
07/07/2017	23:20:04	994	8.2	8.34	51.4			
07/07/2017	23:20:07	1012	8.2	8.34	51.8	Displace 284 BBLS H2O		
07/07/2017	23:20:44	1066	8.2	8.34	56.9			
07/07/2017	23:21:24	1131	8.2	8.35	62.4			
07/07/2017	23:22:04	1188	8.2	8.34	67.9			
07/07/2017	23:22:44	1263	8.2	8.34	73.4			
07/07/2017	23:23:24	1333	8.2	8.34	78.9			
07/07/2017	23:24:04	1417	8.2	8.34	84.3			
07/07/2017	23:24:44	1523	8.2	8.34	89.8			
07/07/2017	23:25:24	1585	8.2	8.34	95.3			
07/07/2017	23:26:04	1673	8.2	8.34	100.7			

Well			Field	Job Start		Customer	Job Number
Hilgers 34N-22HZ			Wattenberg	Jul/07/2017		Anadarko	2540420
Date	Time 24-hr clock	Treating Pressure PSI	Flow Rate B/M	Density LB/G	Volume BBL	Message	
07/07/2017	23:27:24	1865	8.2	8.34	111.6		
07/07/2017	23:28:04	1936	8.2	8.34	117.1		
07/07/2017	23:28:44	2018	8.2	8.34	122.5		
07/07/2017	23:29:24	2098	8.2	8.35	128.0		
07/07/2017	23:30:04	2188	8.1	8.35	133.4		
07/07/2017	23:30:44	2273	8.1	8.34	138.8		
07/07/2017	23:31:24	2362	8.2	8.34	144.2		
07/07/2017	23:32:04	2450	8.2	8.34	149.7		
07/07/2017	23:32:44	2527	8.2	8.35	155.1		
07/07/2017	23:33:24	2587	8.1	8.34	160.5		
07/07/2017	23:34:04	2670	8.1	8.34	165.9		
07/07/2017	23:34:44	2747	8.2	8.35	171.3		
07/07/2017	23:35:24	2795	8.2	8.34	176.7		
07/07/2017	23:36:04	2447	6.3	8.34	181.4		
07/07/2017	23:36:44	2506	6.3	8.34	185.6		
07/07/2017	23:37:24	2537	6.3	8.35	189.8		
07/07/2017	23:38:04	2563	6.3	8.34	194.1		
07/07/2017	23:38:44	2560	6.3	8.34	198.3		
07/07/2017	23:39:24	2579	6.3	8.34	202.5		
07/07/2017	23:40:04	2637	6.3	8.34	206.7		
07/07/2017	23:40:44	2652	6.3	8.34	210.9		
07/07/2017	23:41:24	2641	6.3	8.34	215.1		
07/07/2017	23:42:04	2678	6.3	8.34	219.3		
07/07/2017	23:42:44	2723	6.3	8.34	223.5		
07/07/2017	23:43:24	2751	6.3	8.34	227.7		
07/07/2017	23:44:04	2752	6.3	8.34	231.9		
07/07/2017	23:44:44	2794	6.3	8.35	236.1		
07/07/2017	23:45:24	2770	6.3	8.34	240.3		
07/07/2017	23:46:04	2427	4.5	8.34	243.8		
07/07/2017	23:46:44	2475	4.5	8.34	246.8		
07/07/2017	23:47:24	2509	4.5	8.34	249.7		
07/07/2017	23:48:04	2530	4.4	8.34	252.7		
07/07/2017	23:48:44	2507	4.5	8.34	255.7		
07/07/2017	23:49:24	2496	4.4	8.34	258.6		
07/07/2017	23:50:04	2538	4.5	8.34	261.6		
07/07/2017	23:50:44	2562	4.5	8.34	264.6		
07/07/2017	23:51:24	2537	4.4	8.34	267.5		
07/07/2017	23:52:04	2555	4.5	8.34	270.5		
07/07/2017	23:52:44	2545	4.4	8.34	273.5		
07/07/2017	23:53:24	2590	4.5	8.34	276.4		
07/07/2017	23:54:04	2228	2.2	8.34	278.1		
07/07/2017	23:54:44	2260	2.2	8.34	279.6		
07/07/2017	23:55:24	2237	2.2	8.34	281.1		
07/07/2017	23:56:04	2243	2.2	8.34	282.6		
07/07/2017	23:56:24	2737	0.0	8.34	283.2	Bump Top Plug 2800 PSI	
07/07/2017	23:56:25	2788	0.0	8.34	283.2	End Displacement	
07/07/2017	23:56:44	2749	0.0	8.34	283.2		
07/07/2017	23:57:24	2781	0.0	8.34	283.2		
07/07/2017	23:58:04	2807	0.0	8.34	283.2		
07/07/2017	23:58:44	2393	0.0	8.34	283.2		
07/07/2017	23:59:14	31	0.0	8.34	283.2	Floats Holding	
07/07/2017	23:59:24	-1	0.0	8.34	283.2		
07/08/2017	00:00:04	-4	0.0	8.34	283.2		
07/08/2017	00:00:44	3	0.0	8.34	283.2		



Well Hilgers 34N-22HZ			Field Wattenberg		Job Start Jul/07/2017		Customer Anadarko		Job Number 2540420	
Date	Time 24-hr clock	Treating Pressure PSI		Flow Rate B/M	Density LB/G		Volume BBL	Message		
07/08/2017	00:02:04	2819		2.1	8.34		285.7			
07/08/2017	00:02:13	2986		0.6	8.34		286.0	Pressure Test Casing		
07/08/2017	00:02:17	2980		0.0	8.34		286.0	3000 PSI For 15 Min		
07/08/2017	00:02:44	2995		0.0	8.34		286.0			
07/08/2017	00:03:24	2990		0.0	8.34		286.0			
07/08/2017	00:04:04	2996		0.0	8.34		286.0			
07/08/2017	00:04:44	3008		0.0	8.34		286.0			
07/08/2017	00:05:24	3026		0.0	8.34		286.0			
07/08/2017	00:06:04	3036		0.0	8.34		286.0			
07/08/2017	00:06:44	3049		0.0	8.34		286.0			
07/08/2017	00:07:24	3057		0.0	8.34		286.0			
07/08/2017	00:08:04	3071		0.0	8.34		286.0			
07/08/2017	00:08:44	3083		0.0	8.34		286.0			
07/08/2017	00:09:24	3094		0.0	8.34		286.2			
07/08/2017	00:10:04	3105		0.2	0.08		286.6			
07/08/2017	00:10:44	3118		0.0	0.05		286.6			
07/08/2017	00:11:24	3129		0.0	0.04		286.6			
07/08/2017	00:12:04	3140		0.0	0.04		286.6			
07/08/2017	00:12:44	3151		0.0	0.04		286.6			
07/08/2017	00:13:24	3163		0.0	0.04		286.6			
07/08/2017	00:14:04	3174		0.0	0.04		286.6			
07/08/2017	00:14:44	3185		0.1	6.56		287.5			
07/08/2017	00:15:24	3197		3.1	0.50		287.8			
07/08/2017	00:16:04	3208		1.2	3.81		288.5			
07/08/2017	00:16:44	3218		0.0	0.08		288.9			
07/08/2017	00:17:24	3229		0.0	0.05		288.9			
07/08/2017	00:18:04	3240		0.0	0.05		288.9			
07/08/2017	00:18:44	1788		0.0	0.04		288.9			
07/08/2017	00:18:59	591		0.0	0.04		288.9	Casing Test = Good		
07/08/2017	00:19:24	-3		0.0	0.04		288.9			
07/08/2017	00:20:04	-1		0.1	0.04		288.9			
07/08/2017	00:20:44	-0		0.3	0.04		289.0			
07/08/2017	00:21:24	1		0.3	0.04		289.2			
07/08/2017	00:22:04	1		0.3	0.04		289.4			
07/08/2017	00:22:44	1		0.5	0.04		289.6			

## Post Job Summary

Average Pump Rates, bbl/min					Volume of Fluid Injected, bbl				
Slurry 4.8	N2	Mud	Maximum Rate 15.5	Total Slurry 361.0	Mud 0.0	Spacer 80.0	N2		
Treating Pressure Summary, psi					Breakdown Fluid				
Maximum 4810	Final 1	Average 1102	Bump Plug to 2800	Breakdown	Type	Volume bbl	Density lb/gal		
Avg. N2 Percent %		Designed Slurry Volume 361.0 bbl		Displacement 284.0 bbl	Mix Water Temp 65 degF	Cement Circulated to Surface? <input type="checkbox"/>	Volume bbl		
						Washed Thru Perfs <input type="checkbox"/>	To ft		
Customer or Authorized Representative Levi Rogers				Schlumberger Supervisor Conley Jensen/ Joe Sanchez		Circulation Lost <input type="checkbox"/>	Job Completed <input checked="" type="checkbox"/>		
						-	-		



<b>Service Order #:</b>	
<b>Date:</b>	Jul/07/2017
<b>Operating Time (hh:mm):</b>	00:00
<b>Client Rep:</b>	Levi Rogers
<b>Schlumberger Engineer:</b>	Conley Jensen/ Joe Sanchez
<b>Schlumberger FSM:</b>	

**To be completed by Company Rep. Please answer Y (Yes) or N (No) and add any comments below.**

<b>4</b>	<b>Evaluation</b>					
4a	Main job objective achieved with no consequential non-productive time	10	yes <input type="checkbox"/>	no <input checked="" type="checkbox"/>		0
					Sub-total	0%

**Comments:** (Please include a brief explanation for a "NO" response and summarize any innovations attempted on this well.)

<b>Client:</b>	<b>Schlumberger:</b>
<b>Client Signature:</b>	<b>Schlumberger Signature:</b>