



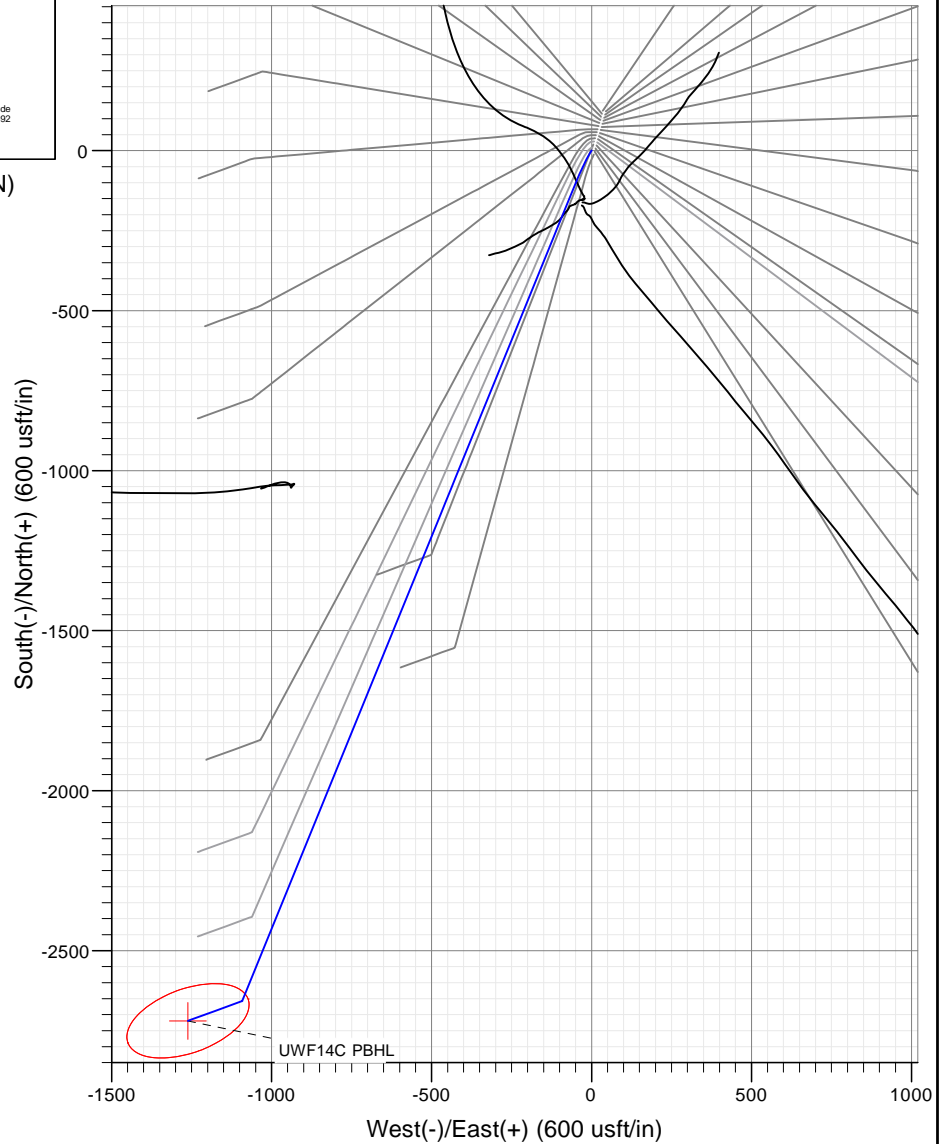
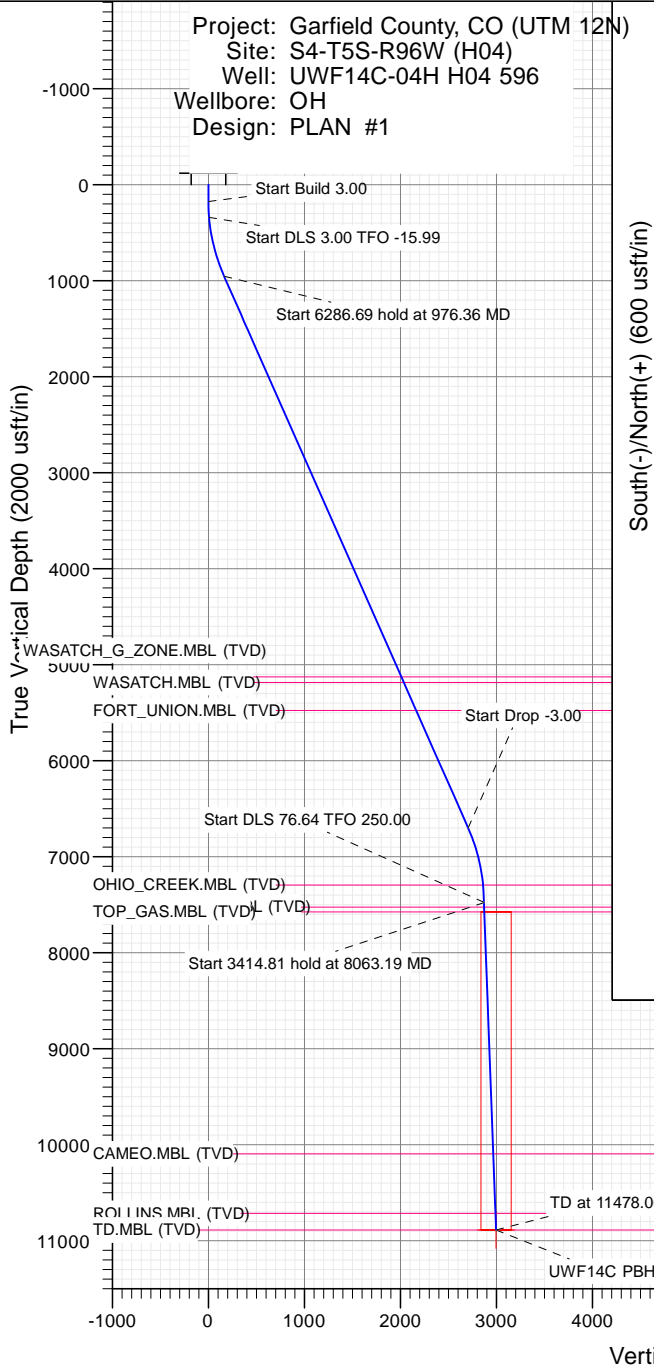
## SECTION DETAILS

Sec	MD	Inc	Azi	TVD	+N/-S	+E/-W	Dleg	TFace	Vsect	Target
1	0.00	0.00	0.00	0.00	0.00	0.00	0.00	0.00	0.00	
2	175.00	0.00	0.00	175.00	0.00	0.00	0.00	0.00	0.00	
3	341.67	5.00	215.00	341.46	-5.95	-4.17	3.00	215.00	7.15	
4	976.36	23.89	202.18	953.40	-148.92	-69.14	3.00	-15.99	164.19	
5	7263.05	23.89	202.18	6701.67	-2506.11	-1030.15	0.00	0.00	2706.92	
6	8059.24	0.00	0.00	7475.00	-2657.58	-1091.90	3.00	180.00	2870.31	
7	8063.19	3.02	250.00	7478.94	-2657.62	-1092.00	76.64	250.00	2870.38	
8	11478.00	3.02	250.00	10889.00	-2719.22	-1261.23	0.00	0.00	2997.47	UWF14C PBHL

PLAN #1  
UWF14C-04H H04 596  
30' K/S @ 8300.00ust  
Ground Level @ 8270.00  
NAD 1987 - Western US  
Well UWF14C-04H H04 596, True North

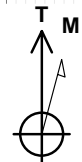
Type	Target	Azimuth	Origin	Type	N/S	E/W	From	TVD
TD	No Target (Freehand)	204.88	Slot	0.00	0.00	0.00	0.00	0.00
Name	UWF14C PBHL	TVD	+N/-S	+E/-W	Latitude	Longitude		
		10889.00	-2719.22	-1261.23	39.638458	-108.168892		

Project: Garfield County, CO (UTM 12N)  
Site: S4-T5S-R96W (H04)  
Well: UWF14C-04H H04 596  
Wellbore: OH  
Design: PLAN #1



## FORMATION TOP DETAILS

TVDPATH	MDPATH	Formation
5127.00	5540.88	WASATCH_G_ZONE.MBL (TVD)
5185.00	5604.32	WASATCH.MBL (TVD)
5477.00	5923.67	FORT_UNION.MBL (TVD)
7294.00	7877.97	OHIO_CREEK.MBL (TVD)
7525.00	8109.31	WILLIAMS_FORK.MBL (TVD)
7575.00	8159.38	TOP_GAS.MBL (TVD)
10094.00	10681.89	CAMEO.MBL (TVD)
10714.00	11302.75	ROLLINS.MBL (TVD)
10889.00	11478.00	TD.MBL (TVD)



Azimuths to True North  
Magnetic North: 9.72°

Magnetic Field  
Strength: 51509.4snT  
Dip Angle: 65.93°  
Date: 8/31/2017  
Model: HDGM

Vertical Section at 204.88° (2000 usft/in)

## WELL DETAILS: UWF14C-04H H04 596

+N/-S	+E/-W	Northing	Easting	Latitude	Longitude
0.00	0.00	14409725.30	2438693.20	39.645921	-108.164415

CATHEDRAL



# Cathedral Energy Services

## Planning Report

<b>Database:</b>	USA EDM 5000 Multi Users DB	<b>Local Co-ordinate Reference:</b>	Well UWF14C-04H H04 596
<b>Company:</b>	Caerus Oil & Gas	<b>TVD Reference:</b>	30' KB @ 8300.00usft
<b>Project:</b>	Garfield County, CO (UTM 12N)	<b>MD Reference:</b>	30' KB @ 8300.00usft
<b>Site:</b>	S4-T5S-R96W (H04)	<b>North Reference:</b>	True
<b>Well:</b>	UWF14C-04H H04 596	<b>Survey Calculation Method:</b>	Minimum Curvature
<b>Wellbore:</b>	OH		
<b>Design:</b>	PLAN #1		

<b>Project</b>	Garfield County, CO (UTM 12N)		
<b>Map System:</b>	Universal Transverse Mercator (US Survey Feet)	<b>System Datum:</b>	Mean Sea Level
<b>Geo Datum:</b>	NAD 1927 - Western US		
<b>Map Zone:</b>	Zone 12N (114 W to 108 W)		

Site		S4-T5S-R96W (H04)			
Site Position:		Northing:	14,409,713.20 usft	Latitude:	39.645887
From:	Map	Easting:	2,438,700.39 usft	Longitude:	-108.164391
Position Uncertainty:	0.00 usft	Slot Radius:	13-3/16 "	Grid Convergence:	1.81 °

Well	UWF14C-04H H04 596					
Well Position	+N/-S	0.00 usft	Northing:	14,409,725.30 usft	Latitude:	39.645921
	+E/-W	0.00 usft	Easting:	2,438,693.20 usft	Longitude:	-108.164415
Position Uncertainty		0.00 usft	Wellhead Elevation:	usft	Ground Level:	8,270.00 usft

<b>Wellbore</b>	OH				
<b>Magnetics</b>	<b>Model Name</b>	<b>Sample Date</b>	<b>Declination (°)</b>	<b>Dip Angle (°)</b>	<b>Field Strength (nT)</b>
	HDGM	8/31/2017	9.72	65.93	51,509.40000000

<b>Design</b>	PLAN #1			
<b>Audit Notes:</b>				
<b>Version:</b>	<b>Phase:</b>	PLAN	<b>Tie On Depth:</b>	0.00
<b>Vertical Section:</b>	<b>Depth From (TVD) (usft)</b>	<b>+N/-S (usft)</b>	<b>+E/-W (usft)</b>	<b>Direction (°)</b>
	0.00	0.00	0.00	204.88

<b>Plan Sections</b>										
Measured Depth (usft)	Inclination (°)	Azimuth (°)	Vertical Depth (usft)	+N/-S (usft)	+E/-W (usft)	Dogleg Rate (°/100usft)	Build Rate (°/100usft)	Turn Rate (°/100usft)	TFO (°)	Target
0.00	0.00	0.00	0.00	0.00	0.00	0.00	0.00	0.00	0.00	
175.00	0.00	0.00	175.00	0.00	0.00	0.00	0.00	0.00	0.00	
341.67	5.00	215.00	341.46	-5.95	-4.17	3.00	3.00	0.00	215.00	
976.36	23.89	202.18	953.40	-148.92	-69.14	3.00	2.98	-2.02	-15.99	
7,263.05	23.89	202.18	6,701.67	-2,506.11	-1,030.15	0.00	0.00	0.00	0.00	
8,059.24	0.00	0.00	7,475.00	-2,657.58	-1,091.90	3.00	-3.00	0.00	180.00	
8,063.19	3.02	250.00	7,478.94	-2,657.62	-1,092.00	76.64	76.64	-2,788.88	250.00	
11,478.00	3.02	250.00	10,889.00	-2,719.22	-1,261.23	0.00	0.00	0.00	0.00	UWF14C PBHL

# Cathedral Energy Services

## Planning Report

<b>Database:</b>	USA EDM 5000 Multi Users DB	<b>Local Co-ordinate Reference:</b>	Well UWF14C-04H H04 596
<b>Company:</b>	Caerus Oil & Gas	<b>TVD Reference:</b>	30' KB @ 8300.00usft
<b>Project:</b>	Garfield County, CO (UTM 12N)	<b>MD Reference:</b>	30' KB @ 8300.00usft
<b>Site:</b>	S4-T5S-R96W (H04)	<b>North Reference:</b>	True
<b>Well:</b>	UWF14C-04H H04 596	<b>Survey Calculation Method:</b>	Minimum Curvature
<b>Wellbore:</b>	OH		
<b>Design:</b>	PLAN #1		

### Planned Survey

Measured Depth (usft)	Inclination (°)	Azimuth (°)	Vertical Depth (usft)	+N/-S (usft)	+E/-W (usft)	Vertical Section (usft)	Dogleg Rate (°/100usft)	Build Rate (°/100u)	Comments / Formations
0.00	0.00	0.00	0.00	0.00	0.00	0.00	0.00	0.00	
100.00	0.00	0.00	100.00	0.00	0.00	0.00	0.00	0.00	
175.00	0.00	0.00	175.00	0.00	0.00	0.00	0.00	0.00	
200.00	0.75	215.00	200.00	-0.13	-0.09	0.16	3.00	3.00	
300.00	3.75	215.00	299.91	-3.35	-2.35	4.03	3.00	3.00	
341.67	5.00	215.00	341.46	-5.95	-4.17	7.15	3.00	3.00	
400.00	6.70	210.87	399.48	-10.96	-7.37	13.04	3.00	2.91	
500.00	9.66	207.19	498.46	-23.43	-14.20	27.23	3.00	2.96	
600.00	12.63	205.22	596.56	-40.78	-22.69	46.54	3.00	2.98	
700.00	15.62	204.00	693.53	-62.97	-32.83	70.94	3.00	2.99	
800.00	18.61	203.16	789.09	-89.94	-44.58	100.35	3.00	2.99	
900.00	21.60	202.55	882.99	-121.62	-57.92	134.70	3.00	2.99	
976.36	23.89	202.18	953.40	-148.92	-69.14	164.19	3.00	2.99	
1,000.00	23.89	202.18	975.02	-157.78	-72.76	173.75	0.00	0.00	
1,100.00	23.89	202.18	1,066.46	-195.28	-88.04	214.19	0.00	0.00	
1,200.00	23.89	202.18	1,157.89	-232.77	-103.33	254.64	0.00	0.00	
1,300.00	23.89	202.18	1,249.33	-270.27	-118.62	295.09	0.00	0.00	
1,400.00	23.89	202.18	1,340.76	-307.76	-133.90	335.53	0.00	0.00	
1,500.00	23.89	202.18	1,432.20	-345.26	-149.19	375.98	0.00	0.00	
1,600.00	23.89	202.18	1,523.63	-382.75	-164.47	416.43	0.00	0.00	
1,700.00	23.89	202.18	1,615.07	-420.25	-179.76	456.87	0.00	0.00	
1,800.00	23.89	202.18	1,706.50	-457.74	-195.05	497.32	0.00	0.00	
1,900.00	23.89	202.18	1,797.94	-495.24	-210.33	537.76	0.00	0.00	
2,000.00	23.89	202.18	1,889.37	-532.73	-225.62	578.21	0.00	0.00	
2,100.00	23.89	202.18	1,980.81	-570.23	-240.91	618.66	0.00	0.00	
2,200.00	23.89	202.18	2,072.25	-607.72	-256.19	659.10	0.00	0.00	
2,300.00	23.89	202.18	2,163.68	-645.22	-271.48	699.55	0.00	0.00	
2,400.00	23.89	202.18	2,255.12	-682.71	-286.77	740.00	0.00	0.00	
2,500.00	23.89	202.18	2,346.55	-720.21	-302.05	780.44	0.00	0.00	
2,600.00	23.89	202.18	2,437.99	-757.70	-317.34	820.89	0.00	0.00	
2,700.00	23.89	202.18	2,529.42	-795.20	-332.62	861.33	0.00	0.00	
2,800.00	23.89	202.18	2,620.86	-832.69	-347.91	901.78	0.00	0.00	
2,900.00	23.89	202.18	2,712.29	-870.19	-363.20	942.23	0.00	0.00	
3,000.00	23.89	202.18	2,803.73	-907.68	-378.48	982.67	0.00	0.00	
3,100.00	23.89	202.18	2,895.16	-945.18	-393.77	1,023.12	0.00	0.00	
3,200.00	23.89	202.18	2,986.60	-982.67	-409.06	1,063.57	0.00	0.00	
3,300.00	23.89	202.18	3,078.04	-1,020.17	-424.34	1,104.01	0.00	0.00	
3,400.00	23.89	202.18	3,169.47	-1,057.66	-439.63	1,144.46	0.00	0.00	
3,500.00	23.89	202.18	3,260.91	-1,095.16	-454.92	1,184.91	0.00	0.00	
3,600.00	23.89	202.18	3,352.34	-1,132.65	-470.20	1,225.35	0.00	0.00	
3,700.00	23.89	202.18	3,443.78	-1,170.15	-485.49	1,265.80	0.00	0.00	
3,800.00	23.89	202.18	3,535.21	-1,207.64	-500.77	1,306.24	0.00	0.00	
3,900.00	23.89	202.18	3,626.65	-1,245.14	-516.06	1,346.69	0.00	0.00	
4,000.00	23.89	202.18	3,718.08	-1,282.63	-531.35	1,387.14	0.00	0.00	
4,100.00	23.89	202.18	3,809.52	-1,320.13	-546.63	1,427.58	0.00	0.00	
4,200.00	23.89	202.18	3,900.96	-1,357.62	-561.92	1,468.03	0.00	0.00	
4,300.00	23.89	202.18	3,992.39	-1,395.12	-577.21	1,508.48	0.00	0.00	
4,400.00	23.89	202.18	4,083.83	-1,432.61	-592.49	1,548.92	0.00	0.00	
4,500.00	23.89	202.18	4,175.26	-1,470.11	-607.78	1,589.37	0.00	0.00	
4,600.00	23.89	202.18	4,266.70	-1,507.60	-623.07	1,629.81	0.00	0.00	
4,700.00	23.89	202.18	4,358.13	-1,545.10	-638.35	1,670.26	0.00	0.00	
4,800.00	23.89	202.18	4,449.57	-1,582.59	-653.64	1,710.71	0.00	0.00	

# Cathedral Energy Services

## Planning Report

<b>Database:</b>	USA EDM 5000 Multi Users DB	<b>Local Co-ordinate Reference:</b>	Well UWF14C-04H H04 596
<b>Company:</b>	Caerus Oil & Gas	<b>TVD Reference:</b>	30' KB @ 8300.00usft
<b>Project:</b>	Garfield County, CO (UTM 12N)	<b>MD Reference:</b>	30' KB @ 8300.00usft
<b>Site:</b>	S4-T5S-R96W (H04)	<b>North Reference:</b>	True
<b>Well:</b>	UWF14C-04H H04 596	<b>Survey Calculation Method:</b>	Minimum Curvature
<b>Wellbore:</b>	OH		
<b>Design:</b>	PLAN #1		

### Planned Survey

Measured Depth (usft)	Inclination (°)	Azimuth (°)	Vertical Depth (usft)	+N/-S (usft)	+E/-W (usft)	Vertical Section (usft)	Dogleg Rate (°/100usft)	Build Rate (°/100u)	Comments / Formations
4,900.00	23.89	202.18	4,541.00	-1,620.09	-668.92	1,751.15	0.00	0.00	
5,000.00	23.89	202.18	4,632.44	-1,657.58	-684.21	1,791.60	0.00	0.00	
5,100.00	23.89	202.18	4,723.87	-1,695.08	-699.50	1,832.05	0.00	0.00	
5,200.00	23.89	202.18	4,815.31	-1,732.57	-714.78	1,872.49	0.00	0.00	
5,300.00	23.89	202.18	4,906.75	-1,770.07	-730.07	1,912.94	0.00	0.00	
5,400.00	23.89	202.18	4,998.18	-1,807.56	-745.36	1,953.39	0.00	0.00	
5,500.00	23.89	202.18	5,089.62	-1,845.06	-760.64	1,993.83	0.00	0.00	
5,540.88	23.89	202.18	5,127.00	-1,860.39	-766.89	2,010.37	0.00	0.00	WASATCH_G_ZONE.MBL (TVD)
5,600.00	23.89	202.18	5,181.05	-1,882.55	-775.93	2,034.28	0.00	0.00	
5,604.32	23.89	202.18	5,185.00	-1,884.17	-776.59	2,036.02	0.00	0.00	WASATCH.MBL (TVD)
5,700.00	23.89	202.18	5,272.49	-1,920.05	-791.22	2,074.72	0.00	0.00	
5,800.00	23.89	202.18	5,363.92	-1,957.54	-806.50	2,115.17	0.00	0.00	
5,900.00	23.89	202.18	5,455.36	-1,995.04	-821.79	2,155.62	0.00	0.00	
5,923.67	23.89	202.18	5,477.00	-2,003.91	-825.41	2,165.19	0.00	0.00	FORT_UNION.MBL (TVD)
6,000.00	23.89	202.18	5,546.79	-2,032.53	-837.07	2,196.06	0.00	0.00	
6,100.00	23.89	202.18	5,638.23	-2,070.03	-852.36	2,236.51	0.00	0.00	
6,200.00	23.89	202.18	5,729.67	-2,107.52	-867.65	2,276.96	0.00	0.00	
6,300.00	23.89	202.18	5,821.10	-2,145.02	-882.93	2,317.40	0.00	0.00	
6,400.00	23.89	202.18	5,912.54	-2,182.51	-898.22	2,357.85	0.00	0.00	
6,500.00	23.89	202.18	6,003.97	-2,220.01	-913.51	2,398.30	0.00	0.00	
6,600.00	23.89	202.18	6,095.41	-2,257.50	-928.79	2,438.74	0.00	0.00	
6,700.00	23.89	202.18	6,186.84	-2,295.00	-944.08	2,479.19	0.00	0.00	
6,800.00	23.89	202.18	6,278.28	-2,332.49	-959.37	2,519.63	0.00	0.00	
6,900.00	23.89	202.18	6,369.71	-2,369.99	-974.65	2,560.08	0.00	0.00	
7,000.00	23.89	202.18	6,461.15	-2,407.48	-989.94	2,600.53	0.00	0.00	
7,100.00	23.89	202.18	6,552.58	-2,444.98	-1,005.22	2,640.97	0.00	0.00	
7,200.00	23.89	202.18	6,644.02	-2,482.47	-1,020.51	2,681.42	0.00	0.00	
7,263.05	23.89	202.18	6,701.67	-2,506.11	-1,030.15	2,706.92	0.00	0.00	
7,300.00	22.78	202.18	6,735.60	-2,519.66	-1,035.67	2,721.54	3.00	-3.00	
7,400.00	19.78	202.18	6,828.77	-2,553.26	-1,049.37	2,757.78	3.00	-3.00	
7,500.00	16.78	202.18	6,923.72	-2,582.30	-1,061.21	2,789.11	3.00	-3.00	
7,600.00	13.78	202.18	7,020.17	-2,606.70	-1,071.16	2,815.42	3.00	-3.00	
7,700.00	10.78	202.18	7,117.87	-2,626.39	-1,079.18	2,836.66	3.00	-3.00	
7,800.00	7.78	202.18	7,216.55	-2,641.31	-1,085.27	2,852.76	3.00	-3.00	
7,877.97	5.44	202.18	7,294.00	-2,649.62	-1,088.65	2,861.72	3.00	-3.00	OHIO_CREEK.MBL (TVD)
7,900.00	4.78	202.18	7,315.94	-2,651.44	-1,089.40	2,863.68	3.00	-3.00	
8,000.00	1.78	202.18	7,415.77	-2,656.73	-1,091.55	2,869.39	3.00	-3.00	
8,059.24	0.00	0.00	7,475.00	-2,657.58	-1,091.90	2,870.31	3.00	-3.00	
8,063.19	3.02	250.00	7,478.94	-2,657.62	-1,092.00	2,870.38	76.64	76.64	
8,100.00	3.02	250.00	7,515.70	-2,658.28	-1,093.82	2,871.75	0.00	0.00	
8,109.31	3.02	250.00	7,525.00	-2,658.45	-1,094.28	2,872.10	0.00	0.00	WILLIAMS_FORK.MBL (TVD)
8,159.38	3.02	250.00	7,575.00	-2,659.35	-1,096.76	2,873.96	0.00	0.00	TOP_GAS.MBL (TVD)
8,200.00	3.02	250.00	7,615.57	-2,660.08	-1,098.78	2,875.47	0.00	0.00	
8,300.00	3.02	250.00	7,715.43	-2,661.89	-1,103.73	2,879.20	0.00	0.00	
8,400.00	3.02	250.00	7,815.29	-2,663.69	-1,108.69	2,882.92	0.00	0.00	
8,500.00	3.02	250.00	7,915.15	-2,665.50	-1,113.65	2,886.64	0.00	0.00	
8,600.00	3.02	250.00	8,015.01	-2,667.30	-1,118.60	2,890.36	0.00	0.00	
8,700.00	3.02	250.00	8,114.87	-2,669.10	-1,123.56	2,894.08	0.00	0.00	
8,800.00	3.02	250.00	8,214.73	-2,670.91	-1,128.51	2,897.80	0.00	0.00	
8,900.00	3.02	250.00	8,314.59	-2,672.71	-1,133.47	2,901.53	0.00	0.00	
9,000.00	3.02	250.00	8,414.45	-2,674.51	-1,138.42	2,905.25	0.00	0.00	
9,100.00	3.02	250.00	8,514.31	-2,676.32	-1,143.38	2,908.97	0.00	0.00	

# Cathedral Energy Services

## Planning Report

<b>Database:</b>	USA EDM 5000 Multi Users DB	<b>Local Co-ordinate Reference:</b>	Well UWF14C-04H H04 596
<b>Company:</b>	Caerus Oil & Gas	<b>TVD Reference:</b>	30' KB @ 8300.00usft
<b>Project:</b>	Garfield County, CO (UTM 12N)	<b>MD Reference:</b>	30' KB @ 8300.00usft
<b>Site:</b>	S4-T5S-R96W (H04)	<b>North Reference:</b>	True
<b>Well:</b>	UWF14C-04H H04 596	<b>Survey Calculation Method:</b>	Minimum Curvature
<b>Wellbore:</b>	OH		
<b>Design:</b>	PLAN #1		

### Planned Survey

Measured Depth (usft)	Inclination (°)	Azimuth (°)	Vertical Depth (usft)	+N/-S (usft)	+E/-W (usft)	Vertical Section (usft)	Dogleg Rate (°/100usft)	Build Rate (°/100u)	Comments / Formations
9,200.00	3.02	250.00	8,614.17	-2,678.12	-1,148.34	2,912.69	0.00	0.00	
9,300.00	3.02	250.00	8,714.03	-2,679.93	-1,153.29	2,916.41	0.00	0.00	
9,400.00	3.02	250.00	8,813.90	-2,681.73	-1,158.25	2,920.13	0.00	0.00	
9,500.00	3.02	250.00	8,913.76	-2,683.53	-1,163.20	2,923.86	0.00	0.00	
9,600.00	3.02	250.00	9,013.62	-2,685.34	-1,168.16	2,927.58	0.00	0.00	
9,700.00	3.02	250.00	9,113.48	-2,687.14	-1,173.11	2,931.30	0.00	0.00	
9,800.00	3.02	250.00	9,213.34	-2,688.95	-1,178.07	2,935.02	0.00	0.00	
9,900.00	3.02	250.00	9,313.20	-2,690.75	-1,183.03	2,938.74	0.00	0.00	
10,000.00	3.02	250.00	9,413.06	-2,692.55	-1,187.98	2,942.46	0.00	0.00	
10,100.00	3.02	250.00	9,512.92	-2,694.36	-1,192.94	2,946.19	0.00	0.00	
10,200.00	3.02	250.00	9,612.78	-2,696.16	-1,197.89	2,949.91	0.00	0.00	
10,300.00	3.02	250.00	9,712.64	-2,697.97	-1,202.85	2,953.63	0.00	0.00	
10,400.00	3.02	250.00	9,812.50	-2,699.77	-1,207.80	2,957.35	0.00	0.00	
10,500.00	3.02	250.00	9,912.36	-2,701.57	-1,212.76	2,961.07	0.00	0.00	
10,600.00	3.02	250.00	10,012.23	-2,703.38	-1,217.72	2,964.79	0.00	0.00	
10,681.89	3.02	250.00	10,094.00	-2,704.85	-1,221.77	2,967.84	0.00	0.00	CAMEO.MBL (TVD)
10,700.00	3.02	250.00	10,112.09	-2,705.18	-1,222.67	2,968.52	0.00	0.00	
10,800.00	3.02	250.00	10,211.95	-2,706.99	-1,227.63	2,972.24	0.00	0.00	
10,900.00	3.02	250.00	10,311.81	-2,708.79	-1,232.58	2,975.96	0.00	0.00	
11,000.00	3.02	250.00	10,411.67	-2,710.59	-1,237.54	2,979.68	0.00	0.00	
11,100.00	3.02	250.00	10,511.53	-2,712.40	-1,242.49	2,983.40	0.00	0.00	
11,200.00	3.02	250.00	10,611.39	-2,714.20	-1,247.45	2,987.12	0.00	0.00	
11,300.00	3.02	250.00	10,711.25	-2,716.01	-1,252.41	2,990.85	0.00	0.00	
11,302.75	3.02	250.00	10,714.00	-2,716.05	-1,252.54	2,990.95	0.00	0.00	ROLLINS.MBL (TVD)
11,400.00	3.02	250.00	10,811.11	-2,717.81	-1,257.36	2,994.57	0.00	0.00	
11,478.00	3.02	250.00	10,889.00	-2,719.22	-1,261.23	2,997.47	0.00	0.00	TD.MBL (TVD)

### Targets

Target Name	Dip Angle (°)	Dip Dir. (°)	TVD (usft)	+N/-S (usft)	+E/-W (usft)	Northing (usft)	Easting (usft)	Latitude	Longitude
UWF14C PBHL	0.00	0.00	10,889.00	-2,719.22	-1,261.23	14,406,967.60	2,437,518.50	39.638458	-108.168892
- hit/miss target									
- Shape									
- plan hits target center									
- Ellipse (radii L200.00 W100.00 on 250.00 azi)									

# Cathedral Energy Services

## Planning Report

<b>Database:</b>	USA EDM 5000 Multi Users DB	<b>Local Co-ordinate Reference:</b>	Well UWF14C-04H H04 596
<b>Company:</b>	Caerus Oil & Gas	<b>TVD Reference:</b>	30' KB @ 8300.00usft
<b>Project:</b>	Garfield County, CO (UTM 12N)	<b>MD Reference:</b>	30' KB @ 8300.00usft
<b>Site:</b>	S4-T5S-R96W (H04)	<b>North Reference:</b>	True
<b>Well:</b>	UWF14C-04H H04 596	<b>Survey Calculation Method:</b>	Minimum Curvature
<b>Wellbore:</b>	OH		
<b>Design:</b>	PLAN #1		

### Formations

Measured Depth (usft)	Vertical Depth (usft)	Name	Lithology	Dip (°)	Dip Direction (°)
5,540.88	5,127.00	WASATCH_G_ZONE.MBL (TVD)			
5,604.32	5,185.00	WASATCH.MBL (TVD)			
5,923.67	5,477.00	FORT_UNION.MBL (TVD)			
7,877.97	7,294.00	OHIO_CREEK.MBL (TVD)			
8,109.31	7,525.00	WILLIAMS_FORK.MBL (TVD)			
8,159.38	7,575.00	TOP_GAS.MBL (TVD)			
10,681.89	10,094.00	CAMEO.MBL (TVD)			
11,302.75	10,714.00	ROLLINS.MBL (TVD)			
11,478.00	10,889.00	TD.MBL (TVD)			