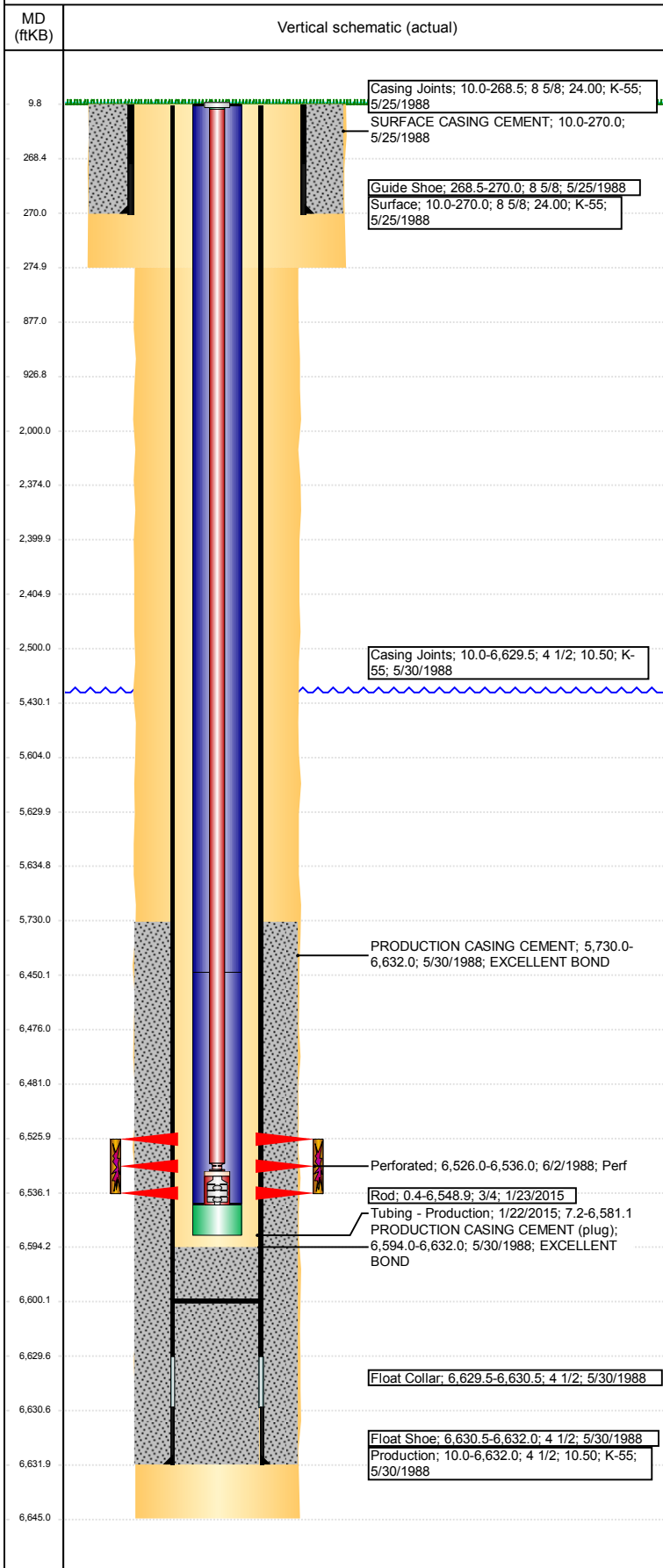


Well Name: LILLI UNIT 14-06

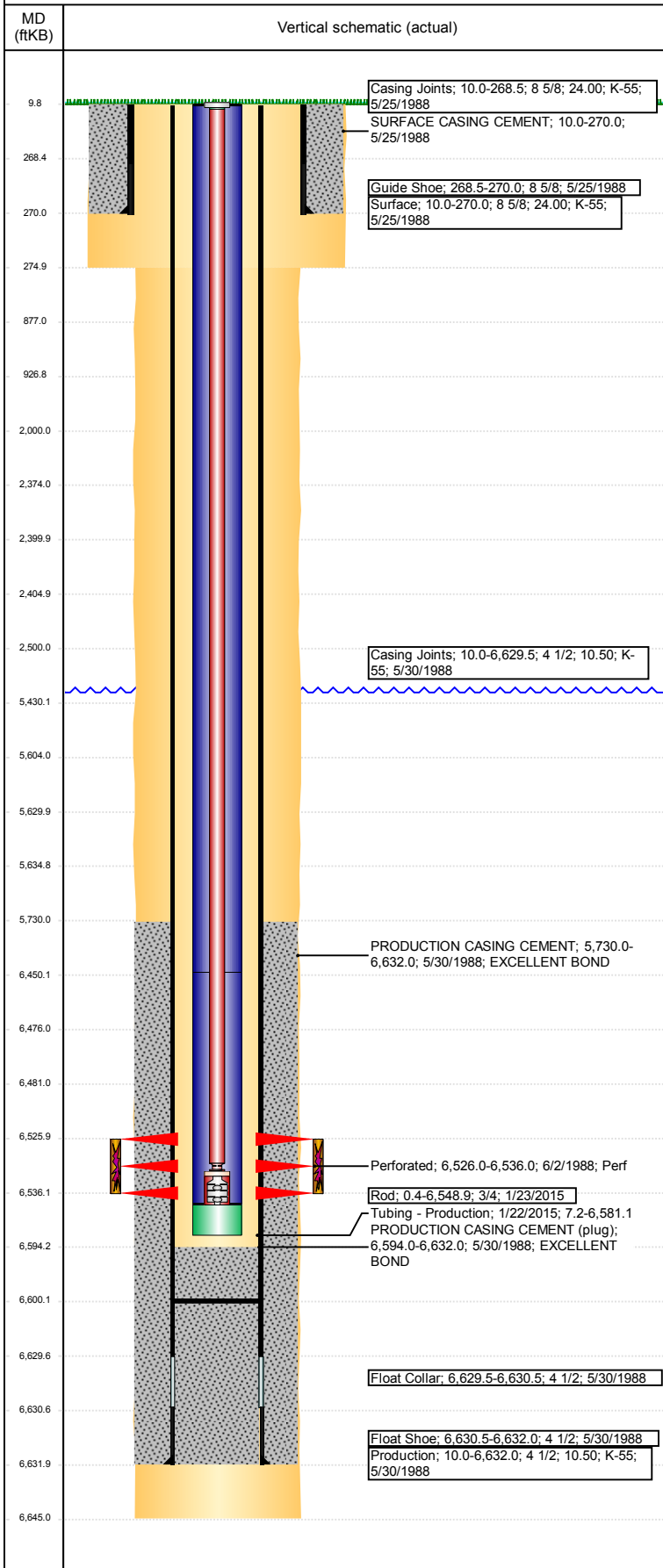
VERTICAL - ORIGINAL HOLE, 9/11/2017 9:38:51 AM



Well Header							
API 05-123-13942	Business Unit DJ BASIN		District 25		Well Config VERTICAL		
Original KB Elevation (ft) 4,842	KB - GL / MSL (ftKB) 10.00		Spud Date 5/25/1988		P & A Date		
Comment							
Directions To Well HIWAY 14 AND WCR 129, NORTH TO WCR 96 (5.2 MILES), WEST - 3.2 MILES AND NORTH INTO.							
Congressional Location							
Quarter 3 SE	Quarter 4 SW	Section 6	Township 8	Twtnshp N/S Dir N	Range 58	Range E/W Dir W	
Bottom Hole Location							
North-South Distance (ft)		From N or S Line		East-West Distance (ft)		From E or W Line	
Plug Back Total Depths							
Date	Depth (ftKB)	Method		Com			
5/30/1988	6,629.5	CASING TALLY		ORIGINAL CBL DEPTH LOGGER TBG TALLY MEASUREMENT.			
6/2/1988	6,594.0	CASED HOLE LOG					
7/18/2012	6,600.8	TAG					
1/20/2015	6,600.1	TAG					
Wellbore Sections							
Section Des		Size (in)		Act Top, MD (ftKB)		Act Btm, MD (ftKB)	
SURFACE		12 1/4		10		275	
PRODUCTION		7 7/8		275		6,645	
Zone Statuses							
Zone Name	Status Date	Status	Fluid Type	Job	Prod Method		
D SAND	7/22/1988	PR	Oil	DRILLING/CO...	Flowing		
D SAND	10/28/2011	PR	Water				
D SAND	6/13/2017	SI					
Casing Strings							
Surface, 270.0ftKB							
Casing Description	Run Date	OD (in)	Wt/Len (l...	Grade	Top, MD (ft...	MD (ftKB)	
Surface	5/25/1988	8 5/8	24.00	K-55	10.0	270.0	
Production, 6,632.0ftKB							
Casing Description	Run Date	OD (in)	Wt/Len (l...	Grade	Top, MD (ft...	MD (ftKB)	
Production	5/30/1988	4 1/2	10.50	K-55	10.0	6,632.0	
Cement							
Description				Top Depth (ftKB)	Bottom Depth (ftKB)		
SURFACE CASING CEMENT				10.0	270.0		
Description				Top Depth (ftKB)	Bottom Depth (ftKB)		
PRODUCTION CASING CEMENT				5,730.0	6,632.0		
Description				Top Depth (ftKB)	Bottom Depth (ftKB)		
PA Plug				6,450.0	6,476.0		
Description				Top Depth (ftKB)	Bottom Depth (ftKB)		
				5,604.0	5,630.0		
Description				Top Depth (ftKB)	Bottom Depth (ftKB)		
PA Plug				5,635.0	5,730.0		
Description				Top Depth (ftKB)	Bottom Depth (ftKB)		
PA Plug				5,430.0	5,730.0		
Description				Top Depth (ftKB)	Bottom Depth (ftKB)		
PA Plug				2,374.0	2,400.0		
Description				Top Depth (ftKB)	Bottom Depth (ftKB)		
PA Plug				2,405.0	2,500.0		
Description				Top Depth (ftKB)	Bottom Depth (ftKB)		
PA Plug				2,000.0	2,500.0		
Description				Top Depth (ftKB)	Bottom Depth (ftKB)		
PA Plug				9.8	877.0		
Description				Top Depth (ftKB)	Bottom Depth (ftKB)		
PA Plug				877.0	927.0		
Tubing Strings							
Tubing Description	Run Date	String...	ID (in)	Wt (lb/ft)	Grade	Len (ft)	Set De...
Tubing - Production	10/31/2006	2 3/8	2.00	4.70	J-55	6,574.00	
Tubing Description	Run Date	String...	ID (in)	Wt (lb/ft)	Grade	Len (ft)	Set De...
Tubing - Production	7/19/2012	2 3/8	2.00	4.70	J-55	6,565.01	
Tubing Description	Run Date	String...	ID (in)	Wt (lb/ft)	Grade	Len (ft)	Set De...
Tubing - Production	1/22/2015	2 3/8	2.00	4.70	J-55	6,573.95	

Well Name: LILLI UNIT 14-06

VERTICAL - ORIGINAL HOLE, 9/11/2017 9:38:51 AM



Other In Hole

Run Date	Des	OD (in)	Top (ftKB)	Btm (ftKB)
7/25/2017	Cement Retainer	4	5,630.0	5,635.0
7/25/2017	Cement Retainer	4	2,400.0	2,405.0
7/25/2017	Cast Iron Bridge Plug	4	6,476.0	6,481.0

Logs

Date	Type	Top, MD (ftKB)	Btm, MD (ftKB)
5/30/1988	COMPENSATED DENSITY	270.0	6,628.0
5/30/1988	INDUCTION	270.0	6,628.0
5/30/1988	MICROLOG	5,650.0	6,586.0

Perforation Data

Linked Zone	Bnch/St g	Sum of Entered Shot Total	Top (ftKB)	Btm (ftKB)	Date
		0	2,500.00	2,500.00	7/25/2017
		0	5,730.00	5,730.00	7/25/2017
D SAND, ORIGINAL HOLE		41	6,526.00	6,536.00	6/2/1988
Total (Sum)		41			

Stimulation Intervals

Start Date	Primary Job Type	
6/3/1988	DRILLING/COMPLETION - ORIGINAL	
Technical Result	Tech Result Details	Tech Result Note
Comment		
BREAK DOWN TREATMENT, 1% HCL TREATMENT FLUID PLUS APPROX 30 BALL SEALERS		
Start Date	Primary Job Type	
6/6/1988	DRILLING/COMPLETION - ORIGINAL	
Technical Result	Tech Result Details	Tech Result Note
Comment		