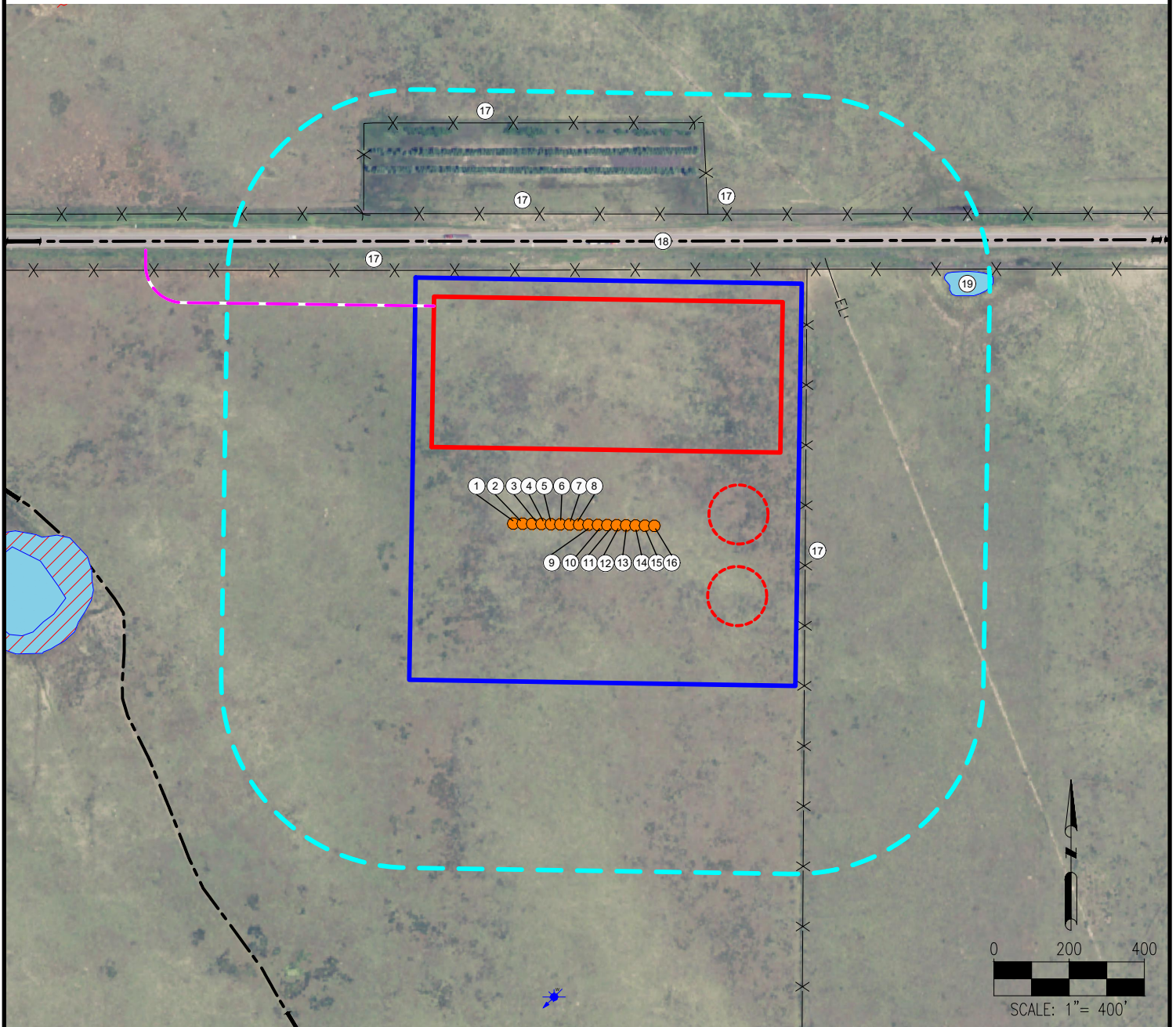


SHOVERLER PAD LOCATION DRAWING



1. SHOVERLER FED 29-32-1HN
2. SHOVERLER FED 29-32-2HC
3. SHOVERLER FED 29-32-3HN
4. SHOVERLER FED 29-32-4HN
5. SHOVERLER FED 29-32-5HN
6. SHOVERLER FED 29-32-6HC
7. SHOVERLER FED 29-32-7HN
8. SHOVERLER FED 29-32-8HN
9. SHOVERLER FED 29-32-9HN
10. SHOVERLER FED 29-32-10HN
11. SHOVERLER FED 29-32-11HC
12. SHOVERLER FED 29-32-12HN
13. SHOVERLER FED 29-32-13HN
14. SHOVERLER FED 29-32-14HN
15. SHOVERLER FED 29-32-15HC
16. SHOVERLER FED 29-32-16HN
17. FENCES ARE $\pm 602'$ E, $\pm 677'$ N, $\pm 826'$ N, $\pm 894'$ NE, $\pm 1069'$ N
18. HIGHWAY 14 IS $\pm 742'$ N
19. POND IS $\pm 1167'$ NE

LEGEND:

- = PROPOSED WELL
- ✕ = WATER WELL
- = PROPOSED ACCESS ROAD
- = EXISTING ROAD
- X X X = FENCE
- = PROPOSED FACILITY BERM
- = DISTURBANCE AREA
- = 500' RADIUS
- = POND
- = WETLAND
- = PROPOSED MLVT

DISCLAIMER:
THIS PLOT DOES NOT REPRESENT A MONUMENTED LAND SURVEY AND SHOULD NOT BE RELIED UPON TO DETERMINE BOUNDARY LINES, PROPERTY OWNERSHIP OR OTHER PROPERTY INTERESTS. IF DEPICTED HAVE NOT BEEN FIELD VERIFIED AND MAY BE BASED UPON PUBLICLY AVAILABLE DATA THAT ALSO HAS NOT BEEN INDEPENDENTLY VERIFIED.

DATA SOURCE:
AERIAL IMAGERY: NAIP 2015
WATER WELLS: COLORADO DWR
NHD: USGS
PUBLICLY AVAILABLE DATA SOURCES HAVE NOT BEEN INDEPENDENTLY VERIFIED BY ASCENT.

MEASURED FROM NEAREST WELL OR FACILITY:

BUILDING $\pm 1679'$ S
BUILDING UNIT $\pm 5280'$ NE
PUBLIC ROAD (HIGHWAY 14) $\pm 135'$ N
PROPERTY LINE (ADAMS STUART A) $\pm 63'$ N
UTILITY (POWERLINE) $\pm 5280'$ SW
RAILROAD $\pm 5280'$ SW

MEASURED FROM NEAREST EDGE OF DISTURBANCE:

SURFACE WATER (POND) $\pm 380'$ E

MEASURED FROM NEAREST WELL:

WATER WELL $\pm 837'$ S SWL = 30'
PERMIT: 9617-F RECEIPT: 9060200

REFERENCE LOCATION

****SHOVERLER FED 29-32-8HN****

LAT: 40.638445° N
LONG: 104.118002° W
ELEVATION: 4948'
754' FNL & 2047' FWL
PDOP: 1.5
GPS OPERATOR: IAN CARABAJAL

DISTURBANCE ACREAGE:

25.2 ACRES DRILLING OPERATIONS
17.0 ACRES INTERIM RECLAIM
CURRENT SURFACE USE: RANGELAND
FUTURE SURFACE USE: RANGELAND

PREPARED FOR:



7535 Hilltop Circle
Denver, CO 80221
(303) 928-7128
www.ascentgeomatics.com

FIELD DATE:

08-10-17

DRAWING DATE:

08-23-17

BY:

RMC

CHECKED:

MJW

SITE NAME:

SHOVERLER PAD

SURFACE LOCATION:

NE 1/4 NW 1/4 SEC. 29, T8N, R60W, 6TH P.M.
WELD COUNTY, COLORADO