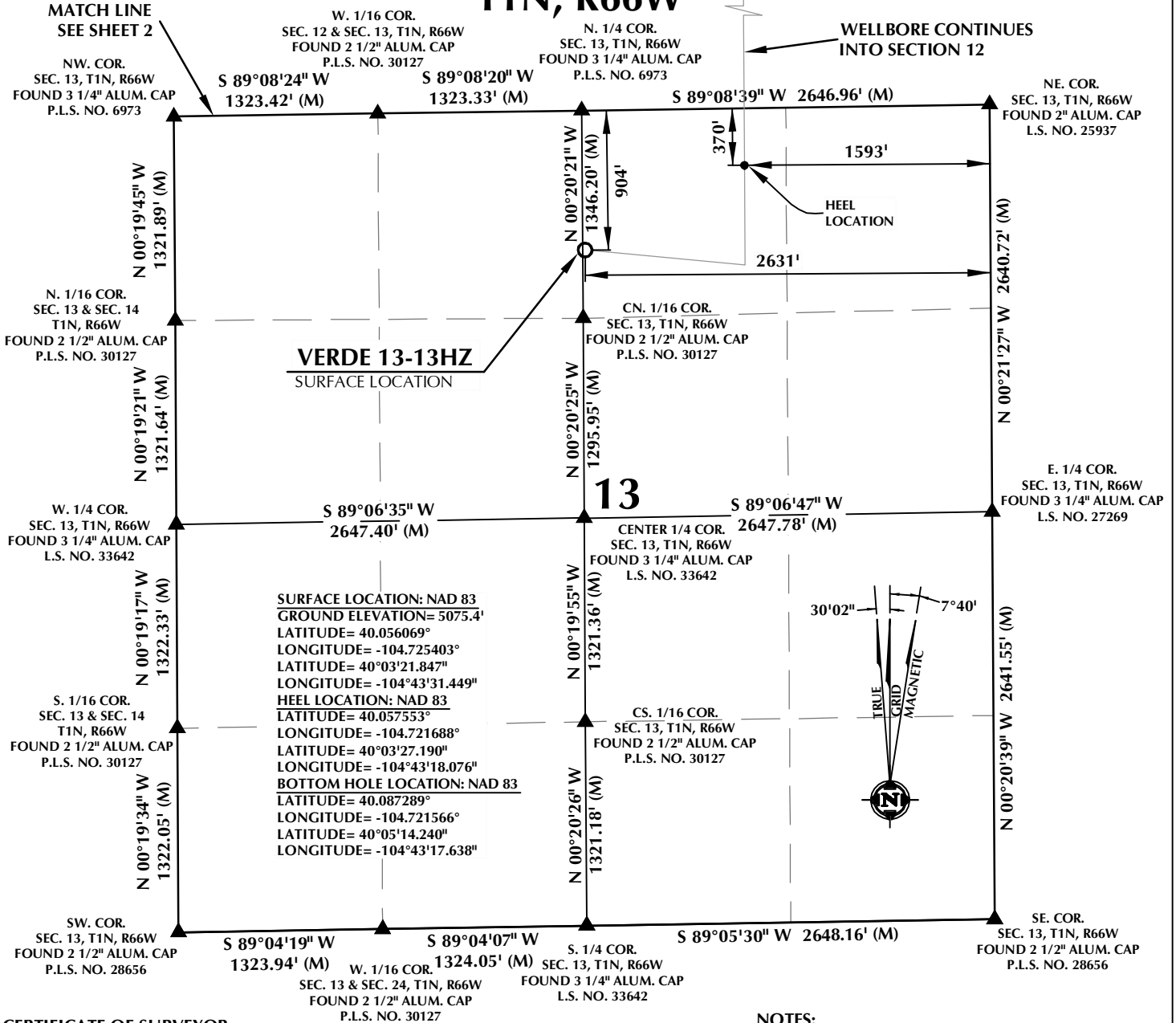


# T1N, R66W



## CERTIFICATE OF SURVEYOR:

THIS IS TO CERTIFY THAT THE ABOVE PLAT WAS PREPARED FROM FIELD NOTES OF ACTUAL SURVEYS MADE BY ME OR UNDER MY SUPERVISION AND THAT THE SAME ARE TRUE AND CORRECT TO THE BEST OF MY KNOWLEDGE AND BELIEF. THIS CERTIFICATE DOES NOT REPRESENT A LAND SURVEY PLAT OR IMPROVEMENT SURVEY PLAT AS DEFINED BY C.R.S. 18-5-102 AND CANNOT BE RELIED UPON TO DETERMINE OWNERSHIP.

**RANDALL K. FRENCH**  
PROFESSIONAL LAND SURVEYOR  
COLORADO REGISTRATION NUMBER 38512

**NOTICE:**  
ACCORDING TO COLORADO STATE LAW YOU MUST TAKE LEGAL ACTION BASED UPON ANY DEFECT IN THIS SURVEY WITHIN THREE YEARS AFTER YOU FIRST DISCOVER SUCH DEFECT. IN NO EVENT MAY ANY ACTION BASED UPON ANY DEFECT IN THIS SURVEY BE COMMENCED MORE THAN TEN YEARS FROM THE DATE ON THE CERTIFICATION SHOWN HEREON.

## WELL PAD - VERDE 13-13HZ

**VERDE 13-13HZ**  
**WELL LOCATION CERTIFICATE**  
904' FNL & 2631' FEL NWNE (SURFACE)  
370' FNL & 1593' FEL NWNE (HEEL)  
LOCATED IN SECTION 13  
52' FNL & 1545' FEL LOT 2 (NWNE) (BOTTOM)  
LOCATED IN SECTION 1  
T1N, R66W, 6TH P.M.  
WELD COUNTY, COLORADO

**Kerr-McGee Oil & Gas Onshore L.P.**  
1099 18th Street  
Denver, Colorado 80202



## CONSULTING, LLC

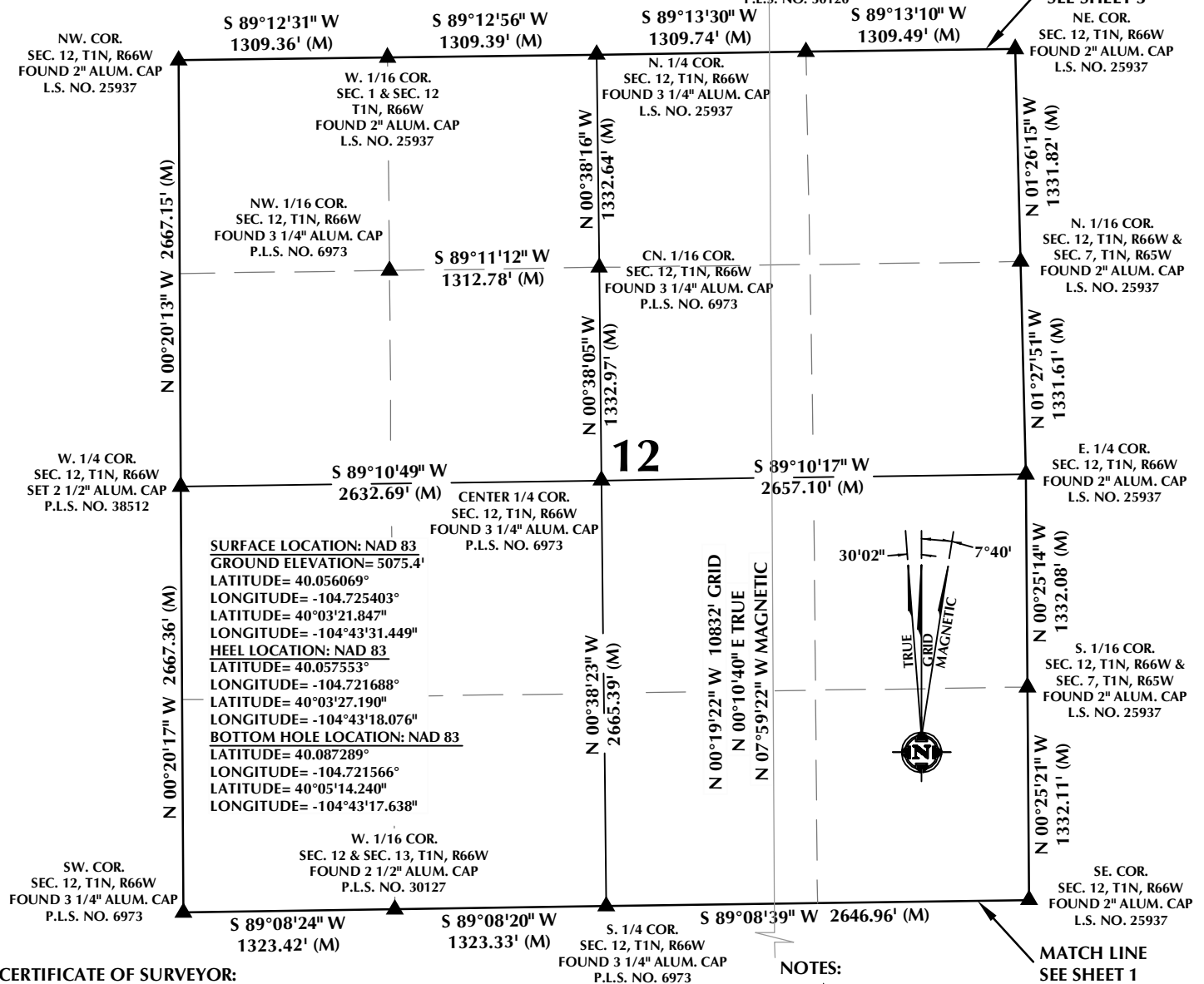
**SHERIDAN OFFICE**  
1095 Saberton Avenue  
Sheridan, Wyoming 82801  
Phone 307-674-0609

**LOVELAND OFFICE**  
1635 Foxtrail Drive, Suite 204  
Loveland, Colorado 80538  
Phone 970-776-4331

DRAFTED BY:	LMO	CHECKED BY:	RKF	SHEET NO:
DATE DRAFTED:	6/14/17	DATE SURVEYED:	5/11/17	1
REVISED:		FILE NAME:	16-161	1 OF 3

# T1N, R66W

WELLBORE CONTINUES  
INTO SECTION 1



## CERTIFICATE OF SURVEYOR:

THIS IS TO CERTIFY THAT THE ABOVE PLAT WAS PREPARED FROM FIELD NOTES OF ACTUAL SURVEYS MADE BY ME OR UNDER MY SUPERVISION AND THAT THE SAME ARE TRUE AND CORRECT TO THE BEST OF MY KNOWLEDGE AND BELIEF. THIS CERTIFICATE DOES NOT REPRESENT A LAND SURVEY PLAT OR IMPROVEMENT SURVEY PLAT AS DEFINED BY C.R.S. 38-5-102 AND CANNOT BE RELIED UPON TO DETERMINE OWNERSHIP.

*Randall K. French*  
38512  
6/14/17  
RANDALL K. FRENCH  
PROFESSIONAL LAND SURVEYOR  
COLORADO REGISTRATION NUMBER 38512

NOTICE:  
ACCORDING TO COLORADO STATE LAW YOU MUST READ THIS CERTIFICATE OF SURVEY AND TAKE LEGAL ACTION BASED UPON ANY DEFECT IN THIS SURVEY WITHIN THREE YEARS AFTER YOU FIRST DISCOVER SUCH DEFECT. IN NO EVENT MAY ANY ACTION BASED UPON ANY DEFECT IN THIS SURVEY BE COMMENCED MORE THAN TEN YEARS FROM THE DATE ON THE CERTIFICATION SHOWN HEREON.

NOTE:  
MAGNETIC NORTH IS CURRENT AS OF 6/6/2017.  
MAGNETIC NORTH CHANGES WEST 0°06' PER YEAR.

0 1000' 2000'

SCALE: 1" = 1000'

## NOTES:

- ▲ INDICATES SECTION CORNER
- INDICATES CALCULATED CORNER
- ELEVATION BASED ON NAVD88 (GEOID09)
- BASIS OF BEARING DERIVED FROM COLORADO COORDINATE SYSTEM OF 1983 NORTH ZONE.
- ALL MEASURED DISTANCES ARE GRID.  
COMBINED SCALE FACTOR: .99972250 CALCULATED FROM THE W. 1/4 CORNER OF SECTION 13, T1N, R66W
- OPERATOR: ROB WILSON / PDOP = 1.4
- SEE ADDENDUM TO WELL LOCATION CERTIFICATE FOR EXISTING IMPROVEMENTS WITHIN 500' OF THE WELL PAD.
- WELL FOOTAGES ARE MEASURED AT RIGHT ANGLES TO THE SECTION LINES.
- THE BOTTOM OF HOLE BEARS N00°19'22"W, 10832' FROM THE HEEL LOCATION.

## WELL PAD - VERDE 13-13HZ

VERDE 13-13HZ  
WELL LOCATION CERTIFICATE  
904' FNL & 2631' FEL NWNE (SURFACE)  
370' FNL & 1593' FEL NWNE (HEEL)  
LOCATED IN SECTION 13  
52' FNL & 1545' FEL LOT 2 (NWNE) (BOTTOM)  
LOCATED IN SECTION 1  
T1N, R66W, 6TH P.M.  
WELD COUNTY, COLORADO

**Kerr-McGee Oil &  
Gas Onshore L.P.**  
1099 18th Street  
Denver, Colorado 80202



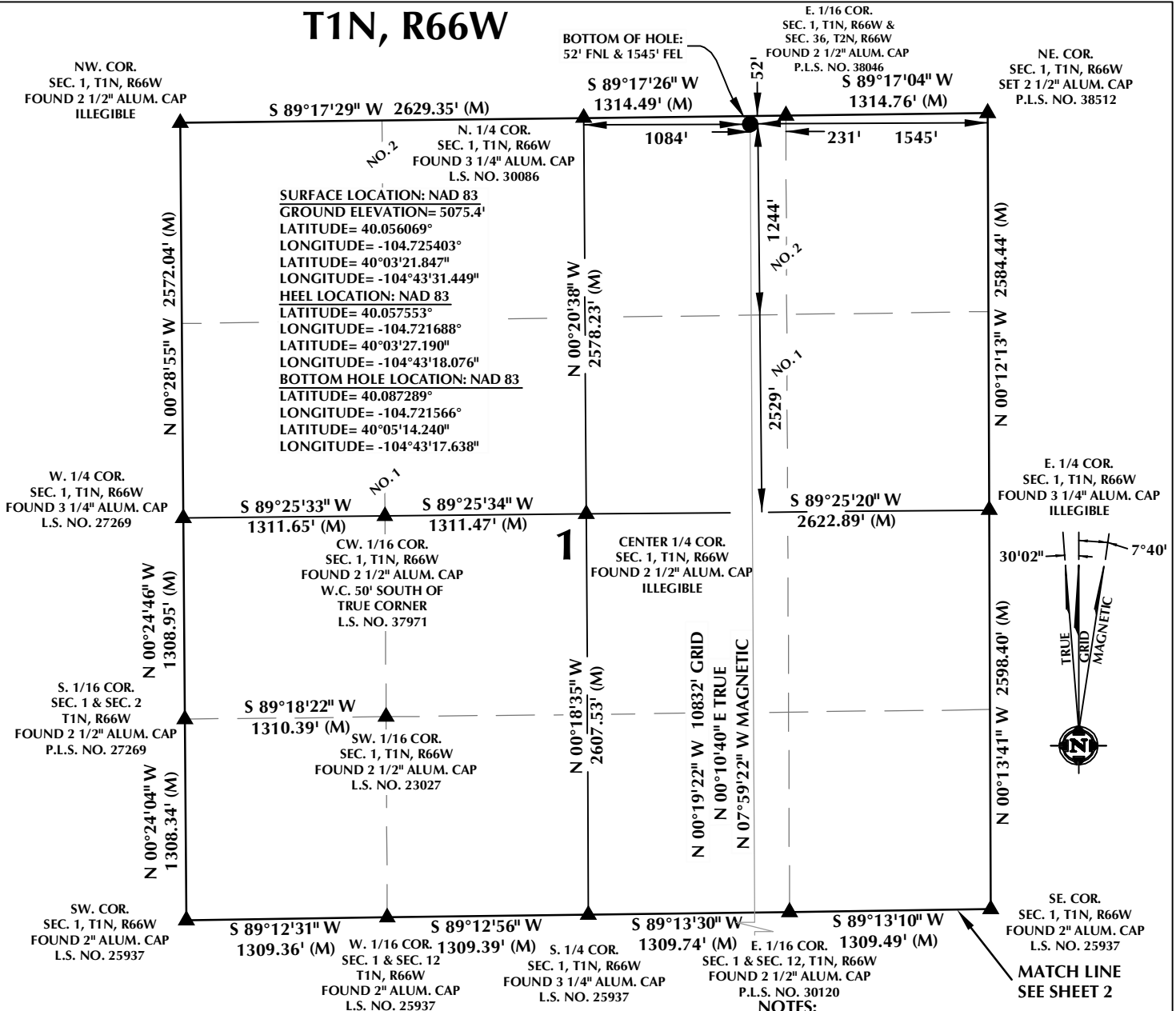
## CONSULTING, LLC

SHERIDAN OFFICE  
1095 Saberton Avenue  
Sheridan, Wyoming 82801  
Phone 307-674-0609

LOVELAND OFFICE  
1635 Foxtrail Drive, Suite 204  
Loveland, Colorado 80538  
Phone 970-776-4331

DRAFTED BY:	LMO	CHECKED BY:	RKF	SHEET NO:
DATE DRAFTED:	6/14/17	DATE SURVEYED:	5/11/17	2
REVISED:		FILE NAME:	16-161	2 OF 3

# T1N, R66W



## CERTIFICATE OF SURVEYOR:

THIS IS TO CERTIFY THAT THE ABOVE PLAT WAS PREPARED FROM FIELD NOTES OF ACTUAL SURVEYS MADE BY ME OR UNDER MY SUPERVISION AND THAT THE SAME ARE TRUE AND CORRECT TO THE BEST OF MY KNOWLEDGE AND BELIEF. THIS CERTIFICATE DOES NOT REPRESENT A LAND SURVEY PLAT OR IMPROVEMENT SURVEY PLAT AS DEFINED BY C.R.S. 38-5-102 AND CANNOT BE RELIED UPON TO DETERMINE OWNERSHIP.

*Randall K. French*  
 RANDALL K. FRENCH  
 PROFESSIONAL LAND SURVEYOR  
 COLORADO REGISTRATION NUMBER 38512  
 6/14/17

NOTICE: ACCORDING TO COLORADO STATE LAW YOU MUST READ THIS CERTIFICATE OF SURVEY WITHIN THREE YEARS AFTER YOU FIRST DISCOVER SUCH DEFECT. IN NO EVENT MAY ANY ACTION BASED UPON ANY DEFECT IN THIS SURVEY BE COMMENCED MORE THAN TEN YEARS FROM THE DATE ON THE CERTIFICATION SHOWN HEREON.

NOTE: MAGNETIC NORTH IS CURRENT AS OF 6/6/2017. MAGNETIC NORTH CHANGES WEST 0°06' PER YEAR.



- NOTES:**
- ▲ INDICATES SECTION CORNER
  - INDICATES CALCULATED CORNER
  - ELEVATION BASED ON NAVD88 (GEOID09)
  - BASIS OF BEARING DERIVED FROM COLORADO COORDINATE SYSTEM OF 1983 NORTH ZONE.
  - ALL MEASURED DISTANCES ARE GRID. COMBINED SCALE FACTOR: .99972250 CALCULATED FROM THE W. 1/4 CORNER OF SECTION 13, T1N, R66W
  - OPERATOR: ROB WILSON / PDOP = 1.4
  - SEE ADDENDUM TO WELL LOCATION CERTIFICATE FOR EXISTING IMPROVEMENTS WITHIN 500' OF THE WELL PAD.
  - WELL FOOTAGES ARE MEASURED AT RIGHT ANGLES TO THE SECTION LINES.
  - THE BOTTOM OF HOLE BEARS N00°19'22"W, 10832' FROM THE HEEL LOCATION.
  - NO. 1 & NO. 2 AS SHOWN HEREON ARE GOVERNMENT LOTS 1 & 2 PER THE ORIGINAL GLO SURVEY

## WELL PAD - VERDE 13-13HZ

VERDE 13-13HZ  
 WELL LOCATION CERTIFICATE  
 904' FNL & 2631' FEL NWNE (SURFACE)  
 370' FNL & 1593' FEL NWNE (HEEL)  
 LOCATED IN SECTION 13  
 52' FNL & 1545' FEL LOT 2 (NWNE) (BOTTOM)  
 LOCATED IN SECTION 1  
 T1N, R66W, 6TH P.M.  
 WELD COUNTY, COLORADO

**Kerr-McGee Oil &  
 Gas Onshore L.P.**  
 1099 18th Street  
 Denver, Colorado 80202



## CONSULTING, LLC

**SHERIDAN OFFICE**  
 1095 Saberton Avenue  
 Sheridan, Wyoming 82801  
 Phone 307-674-0609

**LOVELAND OFFICE**  
 1635 Foxtrail Drive, Suite 204  
 Loveland, Colorado 80538  
 Phone 970-776-4331

DRAFTED BY:	LMO	CHECKED BY:	RKF	SHEET NO:
DATE DRAFTED:	6/14/17	DATE SURVEYED:	5/11/17	3
REVISED:		FILE NAME:	16-161	3 OF 3