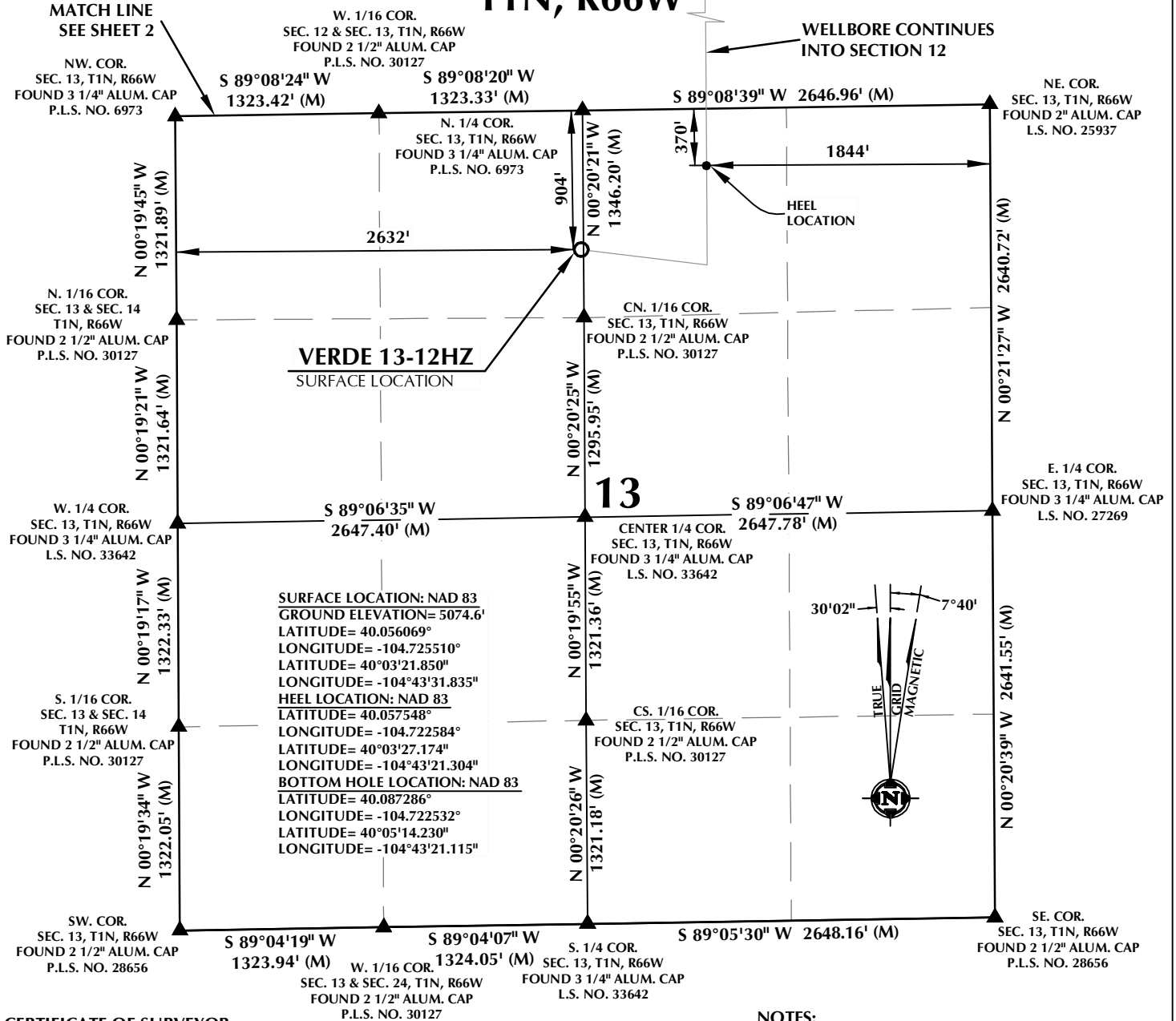
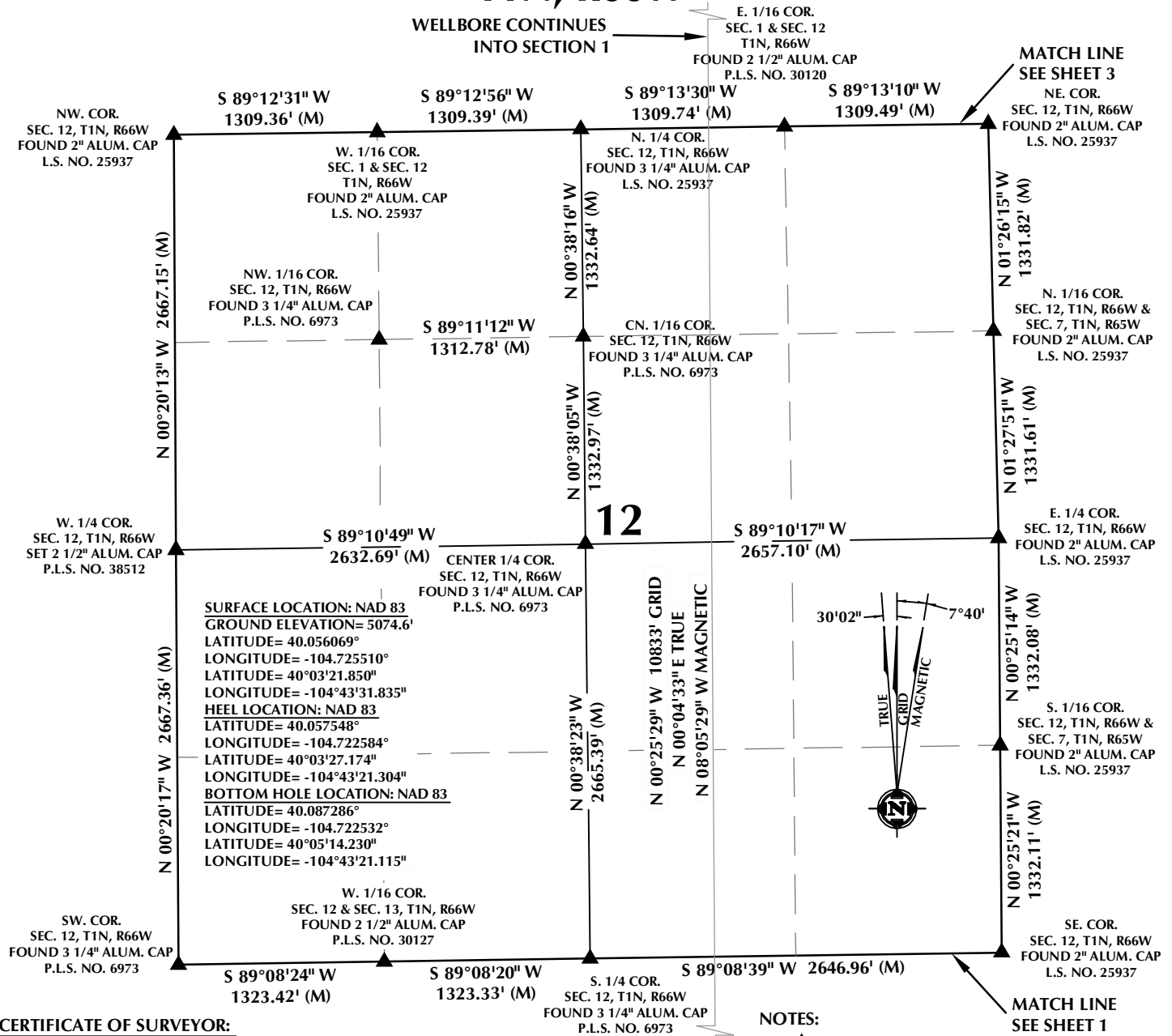


T1N, R66W



T1N, R66W

WELLBORE CONTINUES
INTO SECTION 1



CERTIFICATE OF SURVEYOR:

THIS IS TO CERTIFY THAT THE ABOVE PLAT WAS PREPARED FROM FIELD NOTES OF ACTUAL SURVEYS MADE BY ME OR UNDER MY SUPERVISION AND THAT THE SAME ARE TRUE AND CORRECT TO THE BEST OF MY KNOWLEDGE AND BELIEF. THIS CERTIFICATE DOES NOT REPRESENT A LAND SURVEY PLAT OR IMPROVEMENT SURVEY PLAT AS DEFINED BY C.R.S. 38-5-102 AND CANNOT BE RELIED UPON TO DETERMINE OWNERSHIP.

Randall K. French
 RANDALL K. FRENCH
 PROFESSIONAL LAND SURVEYOR
 COLORADO REGISTRATION NUMBER 38512
 6/14/17

NOTICE:
 ACCORDING TO COLORADO STATE LAW YOU MUST READ THIS CERTIFICATE OF SURVEY AND TAKE LEGAL ACTION BASED UPON ANY DEFECT IN THIS SURVEY WITHIN THREE YEARS AFTER YOU FIRST DISCOVER SUCH DEFECT. IN NO EVENT MAY ANY ACTION BASED UPON ANY DEFECT IN THIS SURVEY BE COMMENCED MORE THAN TEN YEARS FROM THE DATE ON THE CERTIFICATION SHOWN HEREON.

NOTE:
 MAGNETIC NORTH IS CURRENT AS OF 6/6/2017.
 MAGNETIC NORTH CHANGES WEST 0°06' PER YEAR.

0 1000' 2000'

SCALE: 1" = 1000'

NOTES:

- INDICATES SECTION CORNER
- INDICATES CALCULATED CORNER
- ELEVATION BASED ON NAVD88 (GEOID09)
- BASIS OF BEARING DERIVED FROM COLORADO COORDINATE SYSTEM OF 1983 NORTH ZONE.
- ALL MEASURED DISTANCES ARE GRID. COMBINED SCALE FACTOR: .99972250 CALCULATED FROM THE W. 1/4 CORNER OF SECTION 13, T1N, R66W
- OPERATOR: ROB WILSON / PDOP = 1.4
- SEE ADDENDUM TO WELL LOCATION CERTIFICATE FOR EXISTING IMPROVEMENTS WITHIN 500' OF THE WELL PAD.
- WELL FOOTAGES ARE MEASURED AT RIGHT ANGLES TO THE SECTION LINES.
- THE BOTTOM OF HOLE BEARS N00°25'29"W, 10833' FROM THE HEEL LOCATION.

WELL PAD - VERDE 13-13HZ

VERDE 13-12HZ
 WELL LOCATION CERTIFICATE
 904' FNL & 2632' FWL NENW (SURFACE)
 370' FNL & 1844' FEL NWNE (HEEL)
 LOCATED IN SECTION 13
 52' FNL & 1816' FEL LOT 2 (NWNE) (BOTTOM)
 LOCATED IN SECTION 1
 T1N, R66W, 6TH P.M.
 WELD COUNTY, COLORADO

**Kerr-McGee Oil &
Gas Onshore L.P.**

1099 18th Street
 Denver, Colorado 80202



CONSULTING, LLC

SHERIDAN OFFICE
 1095 Saberton Avenue
 Sheridan, Wyoming 82801
 Phone 307-674-0609

LOVELAND OFFICE
 1635 Foxtrail Drive, Suite 204
 Loveland, Colorado 80538
 Phone 970-776-4331

DRAFTED BY:	LMO	CHECKED BY:	RKF	SHEET NO:
DATE DRAFTED:	6/14/17	DATE SURVEYED:	5/11/17	2
REVISED:		FILE NAME:	16-161	2 OF 3

E. 1/16 COR.
SEC. 1, T1N, R66W &
SEC. 36, T2N, R66W
OUND 2 1/2" ALUM. CAP
P.L.S. NO. 38046

S 89°17'29" W 2629.35' (M)

S 89°17'26" W
1314.49' (M)

S 89°17'04" W
1314.76' (M)

SURFACE LOCATION: NAD 83
GROUND ELEVATION= 5074.6'
LATITUDE= 40.056069°
LONGITUDE= -104.725510°
LATITUDE= 40°03'21.850"
LONGITUDE= -104°43'31.835"
HEEL LOCATION: NAD 83
LATITUDE= 40.055748°
LONGITUDE= -104.722584°
LATITUDE= 40°03'22.714"
LONGITUDE= -104°43'21.304"
BOTTOM HOLE LOCATION: NAD 83
LATITUDE= 40.087286°
LONGITUDE= -104.722532°
LATITUDE= 40°05'14.230"
LONGITUDE= -104°43'21.115"

BOTTOM OF HOLE:
52' FNL & 1816' FEL

N 00°20'38" W

1

CENTER 1/4 COR.
SEC. 1, T1N, R66W
UND 2 1/2" ALUM. CAP
ILLEGIBLE

N 00°25'29" W 10833' GRID
N 00°04'33" E TRUE
N 08°05'29" W MAGNETIC

S 89°25'33" W
1311.65' (M)

S 89°25'34" W
1311.47' (M)

S 89°25'20" W
2622.89' (M)

N 00°24'46" W

N 00°24'04" W

S 89°18'22" W
1310.39' (M)

SW. 1/16 COR.
SEC. 1, T1N, R66W
FOUND 2 1/2" ALUM. CAP
L.S. NO. 23027

N 00°18'35" W
2607.53' (M)

S 89°12'31" W
1309.36' (M)

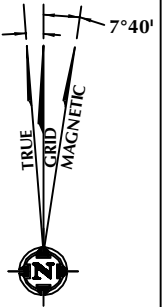
S 89°1
1/16 COR. 1309
1/8 SEC. 12

56" W S 89
9' (M) S. 1/4 COR. 130

4' (M) E. 1/16 COR. 1309.49' (M)

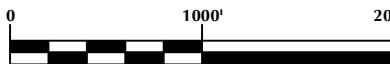
SE. COR.
SEC. 1, T1N, R66W
FOUND 2" ALUM. CAP
L.S. NO. 25937

**MATCH LINE
SEE SHEET 2**



THIS IS TO CERTIFY THAT THE ABOVE PLAT WAS PREPARED FROM FIELD NOTES OF ACTUAL SURVEYS MADE BY ME OR UNDER MY SUPERVISION AND THAT THE SAME ARE TRUE AND CORRECT TO THE BEST OF MY KNOWLEDGE AND BELIEF. THIS CERTIFICATE DOES NOT REPRESENT A LAND SURVEY PLAT OR IMPROVEMENT SURVEY PLAT AS DEFINED BY C.R.S. § 5-1-102 AND CANNOT BE RELIED UPON TO DETERMINE OWNERSHIP.

NOTE:
MAGNETIC NORTH IS CURRENT AS OF 6/6/2017.
MAGNETIC NORTH CHANGES WEST 0°06' PER YEAR.



1. ▲ INDICATES SECTION CORNER
2. ● INDICATES CALCULATED CORNER
3. ELEVATION BASED ON NAVD88 (GEOID09)
4. BASIS OF BEARING DERIVED FROM COLORADO COORDINATE SYSTEM OF 1983 NORTH ZONE.
5. ALL MEASURED DISTANCES ARE GRID.
COMBINED SCALE FACTOR: .99972250 CALCULATED FROM THE W. 1/4 CORNER OF SECTION 13, T1N, R66W
6. OPERATOR: ROB WILSON / PDOP = 1.4
7. SEE ADDENDUM TO WELL LOCATION CERTIFICATE FOR EXISTING IMPROVEMENTS WITHIN 500' OF THE WELL PAD.
8. WELL FOOTAGES ARE MEASURED AT RIGHT ANGLES TO THE SECTION LINES.
9. THE BOTTOM OF HOLE BEARS N00°25'29"W, 10833' FROM THE HEEL LOCATION.
10. NO. 1 & NO. 2 AS SHOWN HEREON ARE GOVERNMENT LOTS 1 & 2 PER THE ORIGINAL GLO SURVEY

SHERIDAN OFFICE
1095 Saberton Avenue
Sheridan, Wyoming 82801
Phone 307-674-0609

LOVELAND OFFICE
1635 Foxtrail Drive, Suite 204
Loveland, Colorado 80538
Phone 970-776-4331

DRAFTED BY: LMO	CHECKED BY: RKF	SHEET NO: <div style="font-size: 2em; font-weight: bold; text-align: center;">3</div> 3 OF 3
DATE DRAFTED: 6/14/17	DATE SURVEYED: 5/11/17	
REVISED:	FILE NAME: 16-161	