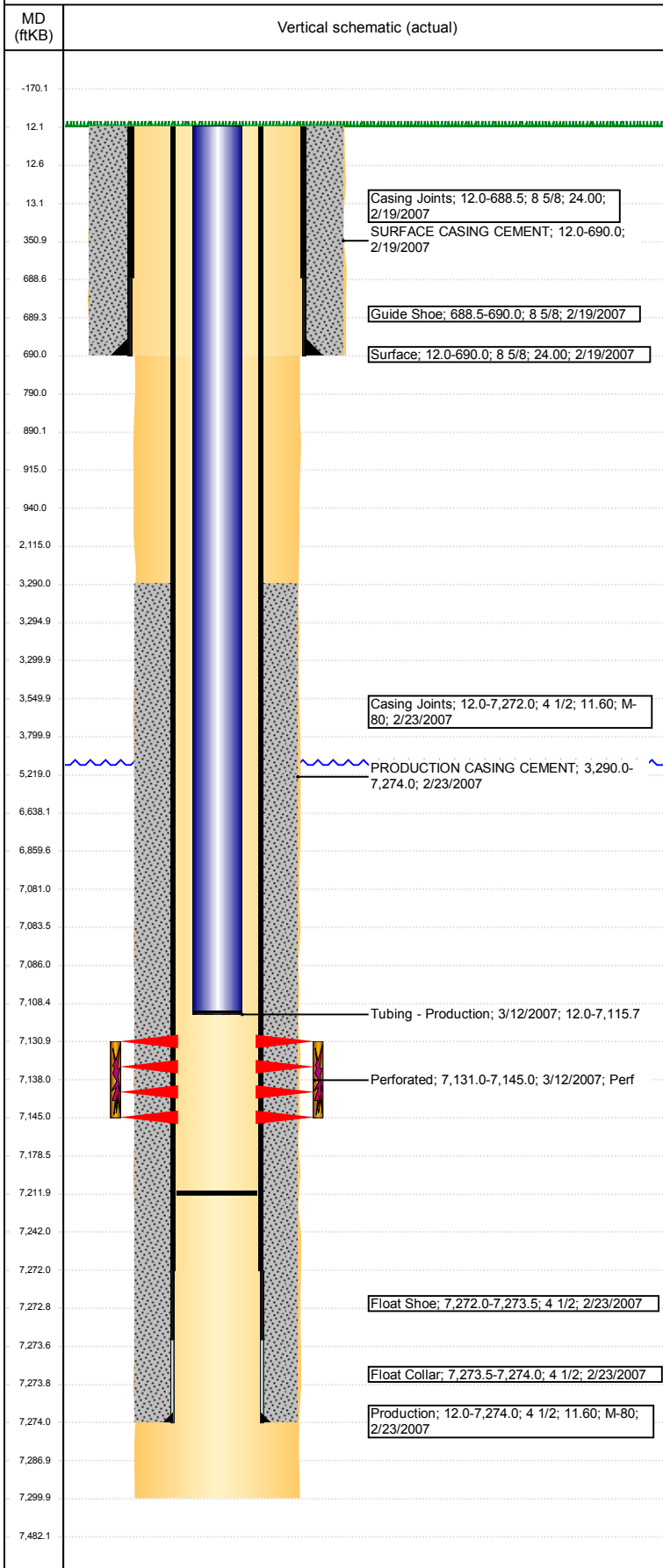


Wellbore Schematic Input Report

Well Name: BOOTH USX EE25-23

VERTICAL - ORIGINAL HOLE, 9/7/2017 3:29:17 PM



Well Header								
API 05-123-24718	Business Unit DJ BASIN		District 15		Well Config VERTICAL			
Original KB Elevation (ft) 4,862	KB - GL / MSL (ftKB) 12.00		Spud Date 2/19/2007		P & A Date			
Comment								
Directions To Well								
Congressional Location								
Quarter 3 SE	Quarter 4 SE	Section 25	Township 7	Twnshp N/S Dir N	Range 65	Range E/W Dir W		
Bottom Hole Location								
North-South Distance (ft)		From N or S Line		East-West Distance (ft)		From E or W Line		
Plug Back Total Depths								
Date	Depth (ftKB)	Method		Com				
2/23/2007	7,258.0	CASING TALLY		TOP OF FLOAT COLLAR				
3/2/2007	7,212.0	CASED HOLE LOG		DEPTH LOGGER ON CBL				
Wellbore Sections								
Section Des		Size (in)		Act Top, MD (ftKB)		Act Btm, MD (ftKB)		
SURFACE		12 1/4		12		690		
PRODUCTION		7 7/8		690		7,300		
Zone Statuses								
Zone Name	Status Date	Status	Fluid Type	Job	Prod Method			
CODELL	4/9/2007	PR		DRILLING/CO...	Flowing			
Casing Strings								
Surface, 690.0ftKB								
Casing Description Surface		Run Date 2/19/2007	OD (in) 8 5/8	Wt/Len (l... 24.00	Grade	Top, MD (ft... 12.0 MD (ftKB) 690.0		
Production, 7,274.0ftKB								
Casing Description Production		Run Date 2/23/2007	OD (in) 4 1/2	Wt/Len (l... 11.60	Grade M-80	Top, MD (ft... 12.0 MD (ftKB) 7,274.0		
Cement								
Description SURFACE CASING CEMENT				Top Depth (ftKB) 12.0		Bottom Depth (ftKB) 690.0		
Description PRODUCTION CASING CEMENT				Top Depth (ftKB) 3,290.0		Bottom Depth (ftKB) 7,274.0		
Description Balance Plug				Top Depth (ftKB) 3,300.0		Bottom Depth (ftKB) 3,800.0		
Description Cement Plug				Top Depth (ftKB) 6,638.0		Bottom Depth (ftKB) 7,081.0		
Description Balance Plug				Top Depth (ftKB) 13.0		Bottom Depth (ftKB) 890.0		
Description Balance Plug				Top Depth (ftKB) 890.0		Bottom Depth (ftKB) 940.0		
Tubing Strings								
Tubing Description Tubing - Production		Run Date 3/12/2007	String... 2 3/8	ID (in) 2.00	Wt (lb/ft) 4.70	Grade J-55	Len (ft) 7,103.70	Set De...
Other In Hole								
Run Date		Des			OD (in)	Top (ftKB)	Btm (ftKB)	
8/17/2017		Cast Iron Bridge Plug			3.99	7,081.0	7,086.0	
Logs								
Date		Type				Top, MD (ftKB)	Btm, MD (ftKB)	
2/23/2007		COMPENSATED DENSITY				2,600.0	7,267.0	
2/23/2007		INDUCTION				690.0	7,287.0	
3/2/2007		CEMENT BOND				3,200.0	7,211.0	
Perforation Data								
Linked Zone		Bnch/St g	Sum of Entered Shot Total	Top (ftKB)		Btm (ftKB)		Date
CODELL, ORIGINAL HOLE			56	7,131.00		7,145.00		3/12/2007
Total (Sum)			56					
Stimulation Intervals								
Start Date 3/23/2007		Primary Job Type DRILLING/COMPLETION - ORIGINAL						
Technical Result			Tech Result Details			Tech Result Note		
Comment CODELL								